

ATLANTIC VERSION TERMINATOR INTERFACE ADAPTER	PART NUMBER	REVISION	DESCRIPTION	FEED TYPE	APPLICATOR STYLE CONVERSION CHART					
					CONVERT TO	PART NUMBERS REQUIRED				
	2836222-2	A	FINE CRIMP HEIGHT ADJUST	PNEUMATIC	-	-	-	-	-	-
	2836222-5	A	FINE CRIMP HEIGHT ADJUST	SERVO LATCH PLATE	2119951-1	-	8-2836222-5	1901094-3	-	2168400-6 (QUANTITY 2)
	2836222-6	A	NON-CRIMP HEIGHT ADJUST	SERVO LATCH PLATE	2161326-1	-	8-2836222-4	-	-	-
	2836222-7	A	FINE CRIMP HEIGHT ADJUST	NONE	-	-	-	-	-	-
	7-2836222-7	A	CRIMP TOOLING KIT	-	-	-	-	-	-	-

APPLICATOR DATA		
CRIMP	SIZE	TYPE
WIRE	2.79 mm (.110)	F
INSUL	-	-

APPLICATOR INSTRUCTIONS
408-10389

TERMINAL DATA: MULTI-CONTACT TERMINAL		TE CRIMP SPECIFICATION	
TERMINAL NAME: TERMINAL			
WIRE STRIP LENGTH		INSULATION DIAMETER RANGE	
4.34-5.11 mm (.171-.201 IN)		Ø	
TERMINAL APPLICATION SPECIFICATION	NONE	-	-
TERMINALS APPLIED			
TE TERMINAL	MULTI-CONTACT TERMINAL	TE TERMINAL	MULTI-CONTACT TERMINAL
2113965-1	32.0012P2000UR	2113966-1	32.0013P2000UR

WIRE SIZE	CRIMP HEIGHT mm [INCH]	CRIMP HEIGHT REFERENCE SETTING
14 AWG	1.90+/-0.05 [0.075+/-0.002]	7.2
16 AWG	1.68+/-0.05 [0.066+/-0.002]	9.2

- RECOMMENDED SPARE PARTS
- GREASE BEARING SURFACES LIGHTLY
- LUBRICATE DAILY PER THE APPLICATOR INSTRUCTION SHEET SUPPLIED WITH THE APPLICATOR.
- APPLICATOR SPECIFIC DATA TO BE ENTERED INTO BLANK MEMORY CHIP AT ASSEMBLY. SEE BELOW FOR PART NUMBER:
 PNEUMATIC FEED WITH "SMART APPLICATOR" CONVERSION: 8-2836222-4
 SERVO FEED WITH "FINE CRIMP HEIGHT ADJUST": 8-2836222-5
 SERVO FEED WITH "NON-CRIMP HEIGHT ADJUST": 8-2836222-6
- ADJUSTMENT OF THE STRIPPER MAY BE REQUIRED WHEN MOVING THE APPLICATOR BETWEEN BENCH AND LEADMAKER APPLICATIONS.
- APPLY PART NUMBER 1-23419-5 LOCTITE TO THREADS OF ITEMS 62. FOR -6 ONLY APPLY PART NUMBER 1-23419-5 LOCTITE TO THREADS OF ITEMS 37.
- GREASE THREADS, GROOVE AND O-RING ON ITEMS 35 & 252.
- MAGNET, ITEM 166 MUST BE ORIENTED CORRECTLY IN ORDER TO PROPERLY ACTUATE THE COUNTER.
- CRIMP HEIGHT REFERENCE SETTING WAS THE SETTING USED WHEN THE APPLICATOR WAS QUALIFIED AT THE FACTORY. ADJUSTMENT MAY BE NECESSARY WHEN RUNNING APPLICATOR IN THE FIELD.
- TERMINAL PITCH NOT COMPATIBLE WITH MECHANICAL FEED.
- TO CONVERT THE APPLICATOR TO A NON-CARRIER CUTTING STYLE, REMOVE ITEM 13 AND ATTACH TO THE LOCATION ON THE BACK SIDE OF THE HOUSING. REFER TO INSTRUCTION SHEET FOR ADDITIONAL INFORMATION.
- WHEN ASSEMBLING A NON CRIMP HEIGHT ADJUST APPLICATOR (-6) USE SHIMS FROM ITEM 260 TO ACHIEVE A NOMINAL SHIM HEIGHT OF 3.9.
- ITEM #34 SETTING 4.8±0.5 FOR TERMINAL 32.0013P2000UR. ITEM #34 SETTING 9.7±0.5 FOR TERMINAL 32.0012P2000UR.
- TERMINAL LUBRICANT IS RECOMMENDED.

***WARNING**
 ON INSTALLATION, SET WIRE DISC, ITEM 40 TO LARGEST WIRE SIZE SETTING. USE OF SETTINGS BELOW MINIMUM REQUIRED CRIMP HEIGHT SETTING WILL CAUSE DAMAGE TO CRIMP TOOLING.

-	2	2	2	2	2168083-1	SCR, SKT HD CAP, RoHS, M3 X 8.0	269
-	1	1	1	1	1633782-2	FENCE	267
-	-	-	-	-	2119957-2	APPLICATOR SHIM PACK	260
-	1	-	1	1	8-21084-0	O-RING, .676 ID, .070 DIA. MAT.	252
-	-	-	-	-	2119640-1	PUSH ROD, AIR FEED	250
-77	-7	-6	-5	-2	PART NO	DESCRIPTION	ITEM NO

ATLANTIC VERSION
 Shown on sheets 1 of 4 & 2 of 4
 (Pacific version shown on sheets 3 of 4 & 4 of 4)

SET UP GAUGE	LOC	DIST	REVISIONS				
2119599-1	A	66	P LTR	DESCRIPTION	DATE	OWN	APVD
			A	RELEASED	22APR2016	KH	CT

-	-	-	-	1	2079988-1	BUSHING, LCH5-12, MISUMI	249
-	-	-	-	1	2119641-1	FEED CAM, AIR FEED	248
-	1	-	1	1	2119798-1	DETENT PIN	247
-	1	-	1	1	1-22279-3	SPRING, COMPRESSION	246
-	-	1	-	-	2119758-1	RAM, AMP STYLE, SIDE FEED, NON-ADJ.	245
-	1	1	1	1	7-18023-7	SCR, SKT HD CAP M3 X 4.0	241
-	-	2	2	-	2168400-6	SHCS, LOW HEAD, RoHS, M5 X 16	240
-	-	-	-	1	2063440-1	AIR FEED MODULE	238
-	-	1	1	-	2119740-2	TAG, IDENTIFICATION	213
-	-	1	1	-	1901094-3	SPACER, FEEDER	198
-	-	-	-	2	21045-3	RING, RETAIN, EXTERN, 3/16 CRESCENT	172
-	1	1	1	1	994969-1	MAGNET, RARE EARTH HIGH ENERGY	166
-	REF	REF	REF	REF	994970-2	COUNTER, MAGNETIC	164
-	-	-	-	1	240638-1	SPRING, FEED FINGER	163
-	-	-	-	1	3-23627-7	PIN, RETAIN, GRVD, 3/16 X .854	137
-	-	-	-	1	2119799-1	HOLDER, FEED FINGER, AF	136
-	-	REF	REF	-	SEE NOTE 4	MEMORY CHIP, PROGRAMMED	135
-	-	1	1	-	1633743-1	SERVO FEED LATCH ASM	133
-	-	REF	REF	-	2119944-1	FEED FINGER ASSEMBLY, SF	117
-	1	1	1	1	2119955-1	ASSY, LUBRICATOR, SIDE FEED	113
-	1	1	1	1	455888-6	SPACER, CRIMPER	82
-	2	2	2	2	2079383-4	SCR, BHSC, RoHS (M4 X 8)	79
-	1	1	1	1	1803096-1	EXTENSION PLATE	78
-	1	1	1	1	22278-8	SPRING, COMPRESSION	77
-	1	1	1	1	854769-4	HOLDER, INS	74
-	1	1	1	1	2119956-1	DOCUMENTATION PACKAGE	71
-	1	1	1	1	2119791-6	DEPRESSOR, WIRE	70
-	1	1	1	1	2119943-1	WASHER, SPACER	69
-	1	-	-	1	2119740-1	TAG, IDENTIFICATION	67
-	2	2	2	2	2168078-1	SCR, DRIVE, RH, RoHS, 2 x .188	66
-	1	-	1	1	2119793-1	LIMITER, ADJUSTMENT BOLT	63
-	3	-	3	3	992763-5	SCR, SET, SOC, CONE POINT, M3 x 4.0	62
-	1	1	1	1	2079383-4	SCR, BHSC, RoHS (M4 X 8)	60
-	-	-	-	1	5-18022-5	SCR, HEX HD CAP, M4 X 6.0	59
-	1	1	1	1	21028-2	PIN, SLOTTED SPRING .062 X .250	58
-	-	-	-	1	1338683-8	FEED PAWL	56
-	4	4	4	4	2168400-1	SHCS, LOW HEAD, RoHS, M4 X 12	54
-	2	2	2	2	2168083-3	SCR, SKT HD CAP, RoHS, M4 X 12.0	53
-	1	1	1	1	5018030-1	NUT, HEX, REG, RoHS, M3	52
-	1	1	1	1	811242-5	BUMPER, HOLD DOWN	51
-	1	1	1	1	690753-2	SPACER, TONKER	50
-	-	-	-	1	18023-9	SCR, SKT HD CAP M4 X 6.0	49
-	1	1	1	1	2-2119656-3	APPLICATOR BASIC ASSEMBLY, SF	46
-	1	-	1	1	2119370-1	RAM, AMP STYLE, SIDE FEED	44
-	1	1	1	1	2079383-7	SCR, BHSC, RoHS (M8 X 25)	41
-	1	-	1	1	2119645-1	DISC, NUMBERED FA WIRE ADJUSTMENT	40
-	1	-	1	1	2119957-1	APPLICATOR SHIM PACK	39
-	1	1	1	1	2119644-2	RAM WASHER, PRECISION	38
-	1	1	1	1	2119085-1	FA HEAD, ATLANTIC STYLE	37
-	1	-	1	1	2119092-1	BOLT, ADJUSTMENT	35
-	1	1	1	1	1-1752356-3	SUPPORT, TERMINAL	34
-	2	2	2	2	2079383-5	SCR, BHSC, RoHS (M4 X 20)	33
-	1	1	1	1	2161328-1	HEX HEAD, FLANGED, M5 x 8mm LONG	32
-	1	1	1	1	1320908-4	SPACER, STRIP GUIDE	30
-	1	1	1	1	2119959-2	ASSEMBLY, STRIP GUIDE	29
-	1	1	1	1	2-455888-4	SPACER, CRIMPER	28
-	1	1	1	1	1320928-4	STRIP GUIDE	24
-	1	1	1	1	2168083-2	SCR, SKT HD CAP, RoHS, M4 X 8.0	21
-	2	2	2	2	1-18028-2	WASHER, FLAT, REG M4	20
-	1	1	1	1	2119533-1	STRIPPER, SIDE FEED	19
-	1	1	1	1	2119806-1	INSERT, SHEAR	13
-	1	1	1	1	3-22280-3	SPRING, COMPRESSION	12
-	1	1	1	1	1-356885-4	STOP, SHEAR	11
-	1	1	1	1	2119805-1	SHEAR HOLDER, FRONT	10
-	1	1	1	1	1803095-1	FLOATING SHEAR, FRONT	9
-	1	1	1	1	7-1633933-2	ANVIL, COMBINATION	8
-	-	-	-	-	-	-	7
-	-	-	-	-	-	-	6
-	1	1	1	1	1-2119780-2	DEPRESSOR, SHEAR	5
-	-	-	-	-	-	-	4
-	-	-	-	-	-	-	3
-	-	-	-	-	-	-	2
-	1	1	1	1	5-456408-1	CRIMPER, WIRE PREMIUM	1
-77	-7	-6	-5	-2	PART NO	DESCRIPTION	ITEM NO

DIMENSIONS:		TOLERANCES UNLESS OTHERWISE SPECIFIED:		DRAWING NO		RESTRICTED TO	
mm	0 PLC ±	1 PLC ±	2 PLC ±	3 PLC ±	4 PLC ±	5 PLC ±	6 PLC ±
	ANGLES	FINISH					
MATERIAL		WEIGHT		SIZE	CAGE CODE	DRAWING NO	
				A1	00779	2836222	
Customer Accessible Production Drawing				SCALE	1:2	SHEET	1 OF 4

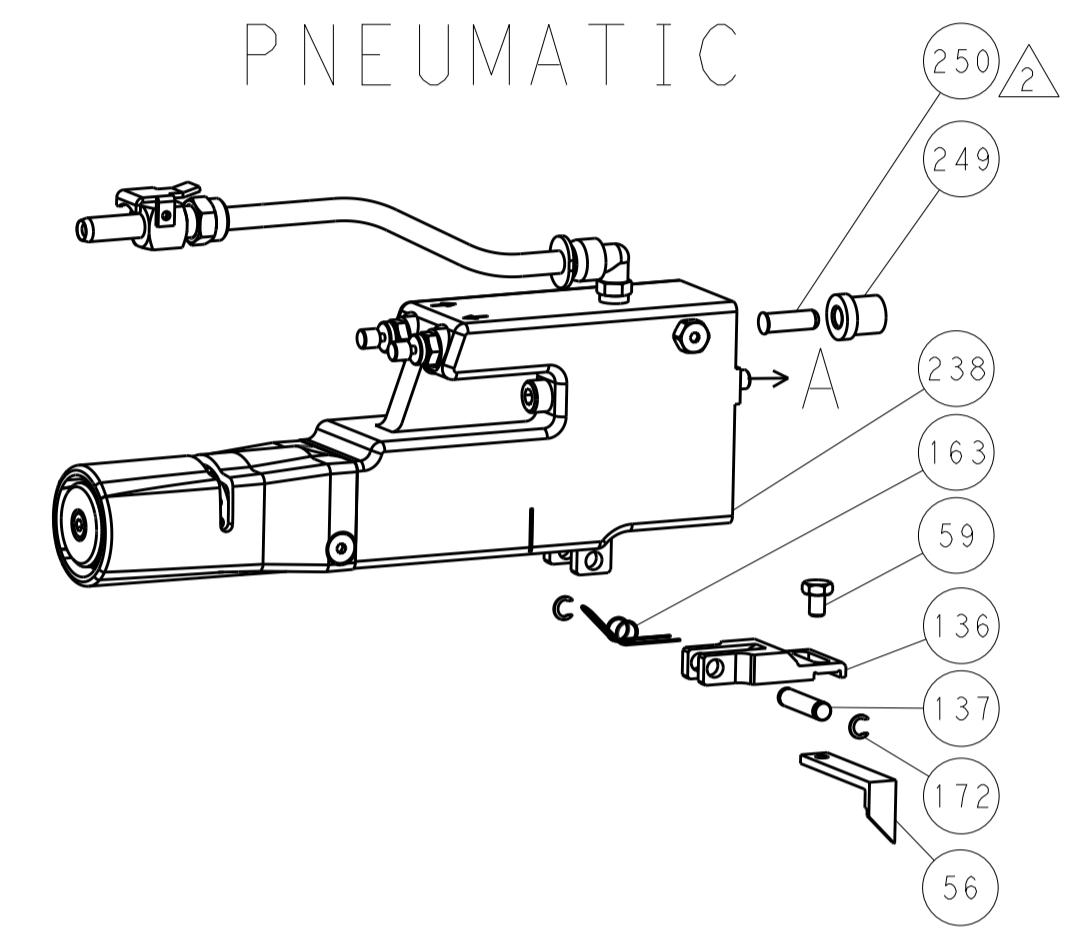
TE Connectivity
 Harrisburg, PA 17105-3608

Ocean Side Feed
 Applicator

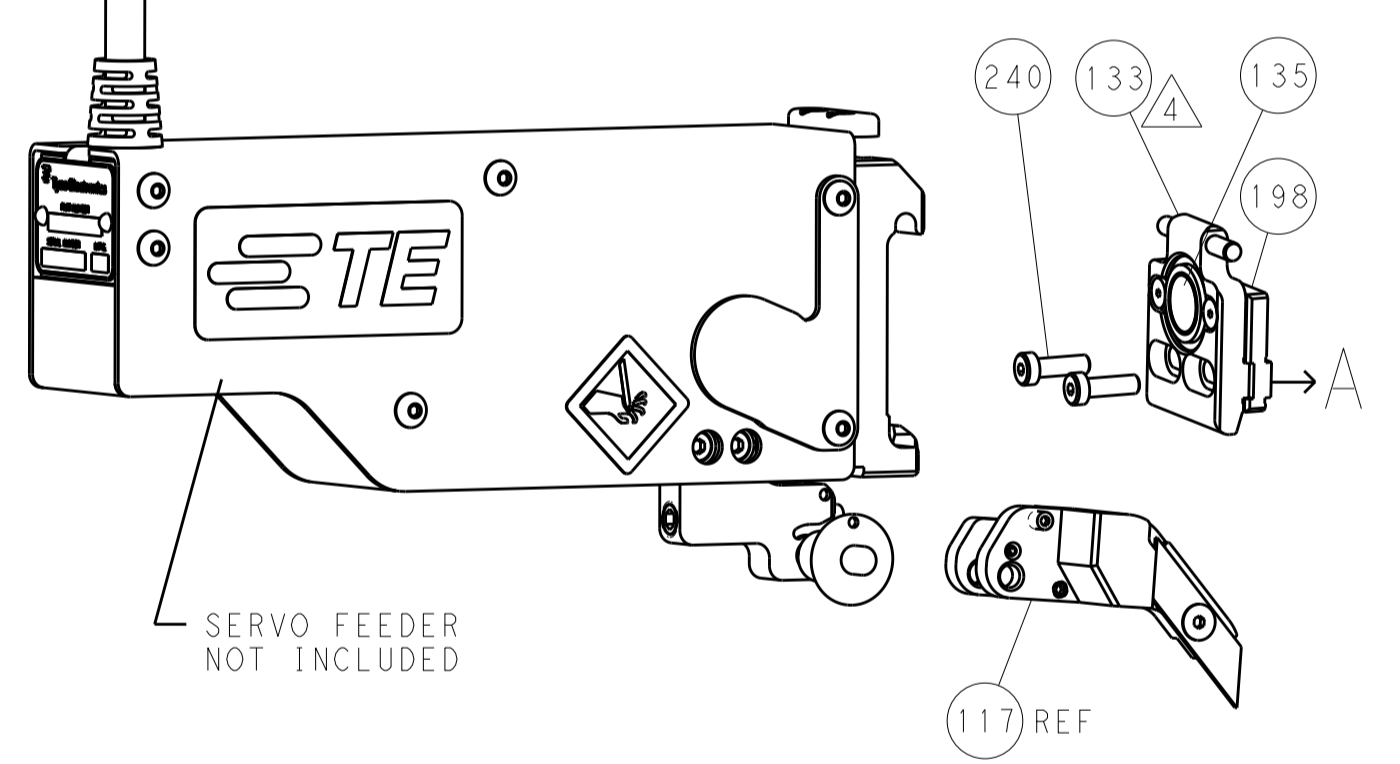
LOC		DIST		REVISIONS			
A	66	P	LTM	DESCRIPTION	DATE	DWN	APVD
		-		SEE SHEET 1			

FEED TYPE

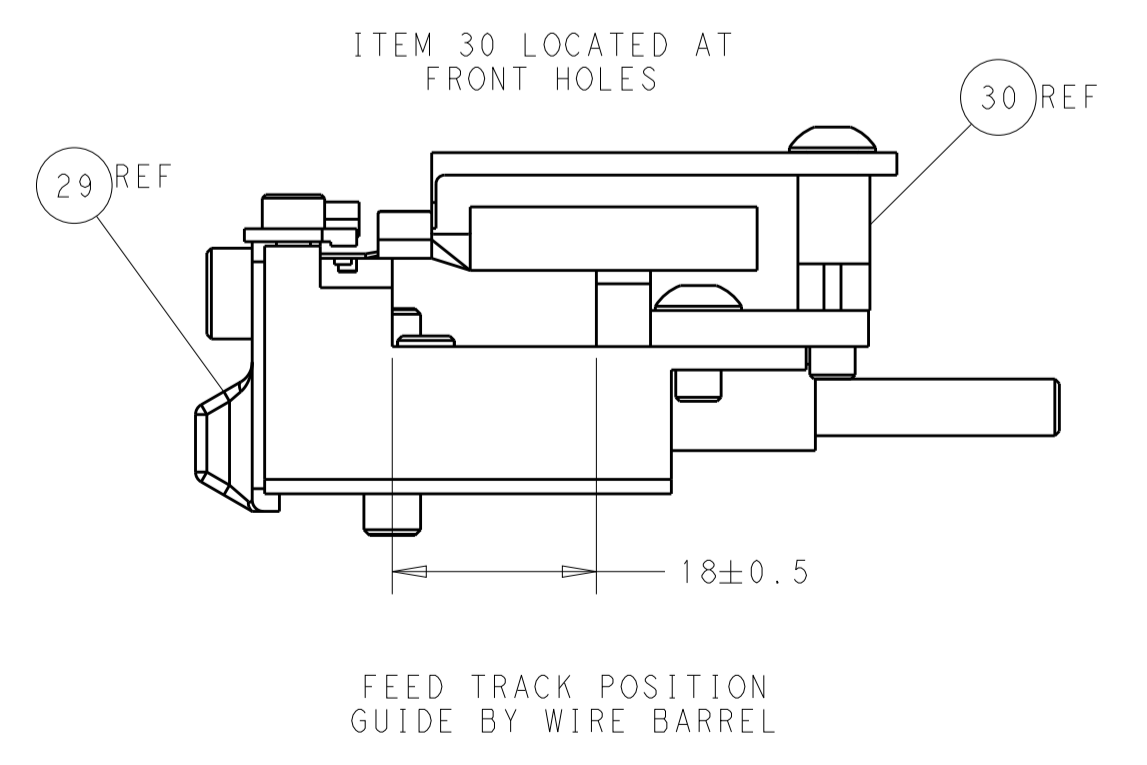
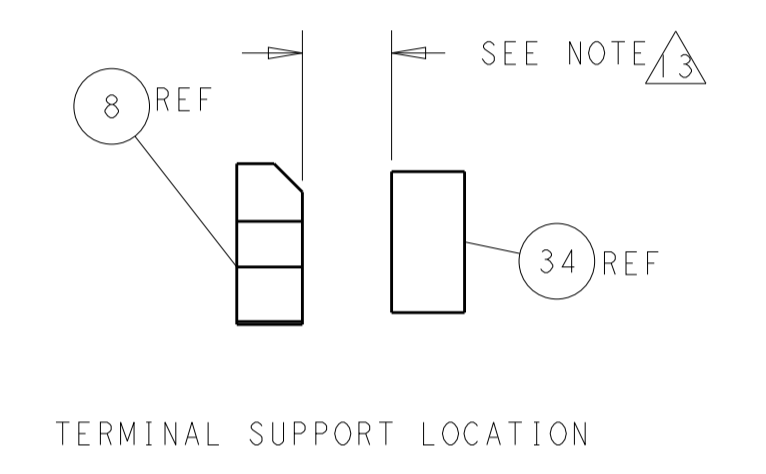
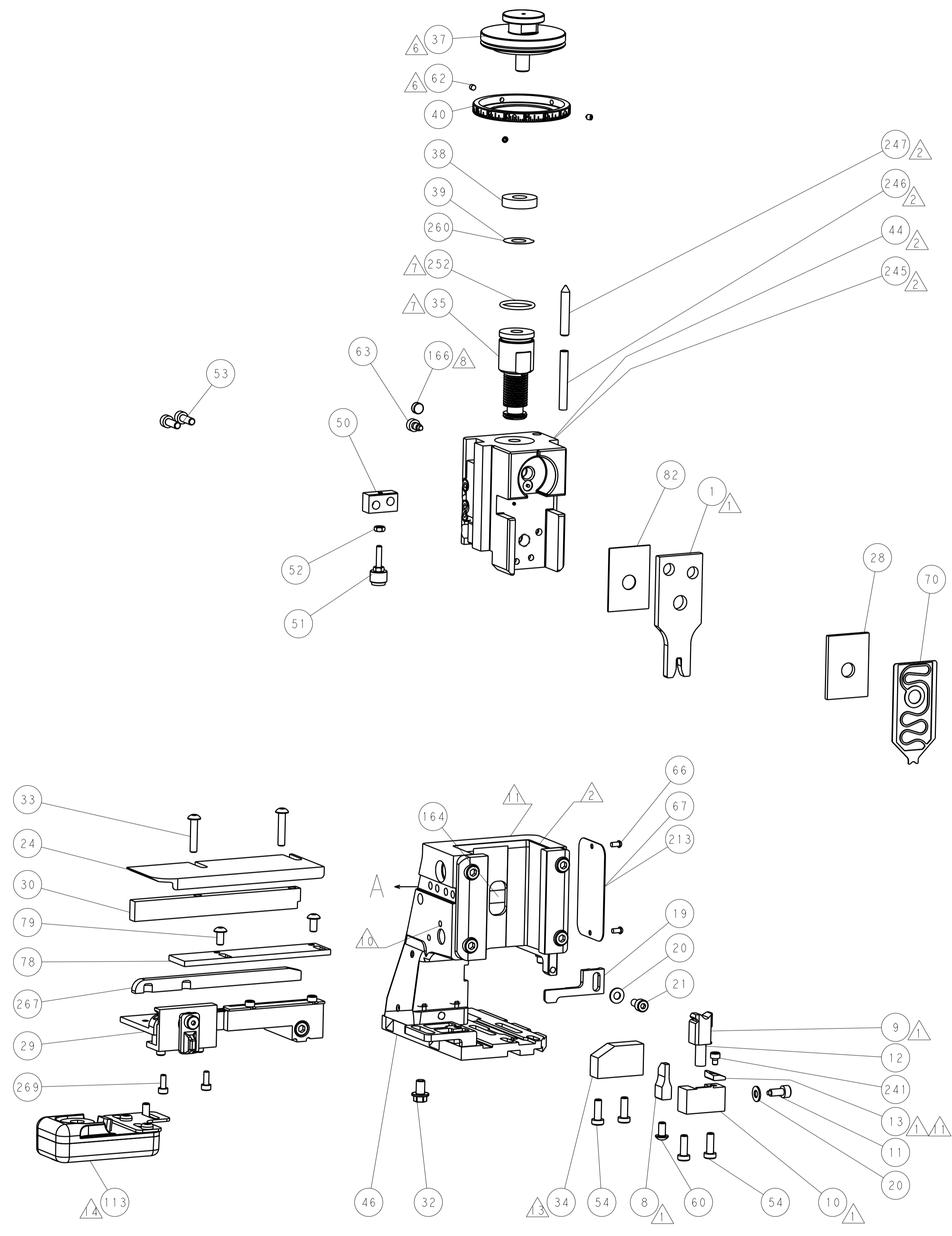
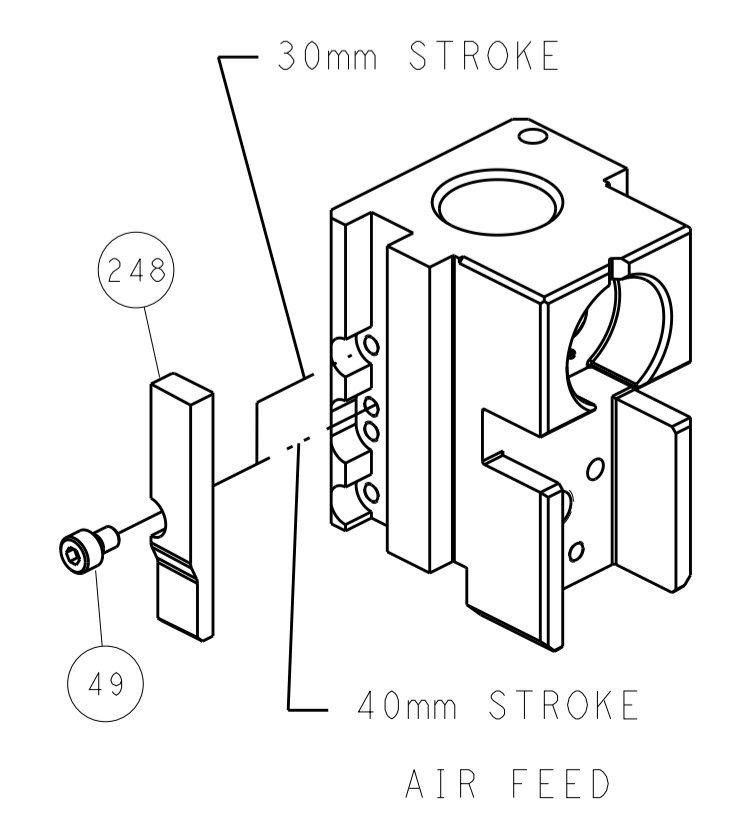
PNEUMATIC



SERVO LATCH PLATE



CAM POSITION



ATLANTIC VERSION
 Shown on sheets 1 of 4 & 2 of 4
 (Pacific version shown on sheets 3 of 4 & 4 of 4)

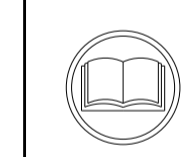
<small>THIS DRAWING IS UNPUBLISHED. RELEASED FOR PUBLICATION. IT IS THE PROPERTY OF TYCO ELECTRONICS CORPORATION AND IS NOT TO BE REPRODUCED OR TRANSMITTED IN ANY FORM OR BY ANY MEANS, ELECTRONIC OR MECHANICAL, INCLUDING PHOTOCOPYING, RECORDING, OR BY ANY INFORMATION STORAGE AND RETRIEVAL SYSTEM, WITHOUT THE WRITTEN PERMISSION OF TYCO ELECTRONICS CORPORATION.</small>		DWN: J. HOU 01MAR2016 CHK: L. ZHANG 01MAR2016 APVD: H. GUO 01MAR2016	NAME: Ocean Side Feed Applicator PRODUCT SPEC: - APPLICATION SPEC: - SIZE: A1 CAGE CODE: 00779 DRAWING NO: C=2836222	TE Connectivity Harrisburg, PA 17105-3608
DIMENSIONS: mm TOLERANCES UNLESS OTHERWISE SPECIFIED: 0 PLC ± 1 PLC ± 2 PLC ± 3 PLC ± 4 PLC ± ANGLES ±	FINISH: -	WEIGHT: - SCALE: 1:2 SHEET: 2 of 4 REV: A	RESTRICTED TO: -	Customer Accessible Production Drawing

PACIFIC VERSION TERMINATOR INTERFACE ADAPTER	PART NUMBER	REVISION	DESCRIPTION	FEED TYPE
	2-2836222-2	A	FINE CRIMP HEIGHT ADJUST	PNEUMATIC
	2-2836222-5	A	FINE CRIMP HEIGHT ADJUST	SERVO LATCH PLATE ⁴
	2-2836222-7	A	FINE CRIMP HEIGHT ADJUST	NONE
	7-2836222-7	A	CRIMP TOOLING KIT	-

APPLICATOR DATA		
CRIMP	SIZE	TYPE
WIRE	2.79 mm [.110]	F
INSUL	-	-
APPLICATOR INSTRUCTIONS 408-10389		

TERMINAL DATA: MULTI-CONTACT TERMINAL		TE CRIMP SPECIFICATION	
TERMINAL NAME: TERMINAL			
WIRE STRIP LENGTH 4.34-5.11 mm [.171-.201 IN]		INSULATION DIAMETER RANGE Ø	
TERMINAL APPLICATION SPECIFICATION	NONE	-	-
TERMINALS APPLIED ¹⁰			
TE TERMINAL	MULTI-CONTACT TERMINAL	TE TERMINAL	MULTI-CONTACT TERMINAL
2113965-1	32.0012P2000UR	2113966-1	32.0013P2000UR

WIRE SIZE	CRIMP HEIGHT mm [INCH]	CRIMP HEIGHT REFERENCE SETTING ⁹
14 AWG	1.90+/-0.05 [.075+/- .002]	7.2
16 AWG	1.68+/-0.05 [.066+/- .002]	9.2



- ¹ RECOMMENDED SPARE PARTS
- ² GREASE BEARING SURFACES LIGHTLY
- 3. LUBRICATE DAILY PER THE APPLICATOR INSTRUCTION SHEET SUPPLIED WITH THE APPLICATOR.
- ⁴ APPLICATOR SPECIFIC DATA TO BE ENTERED INTO BLANK MEMORY CHIP AT ASSEMBLY. SEE BELOW FOR PART NUMBER:
PNEUMATIC FEED WITH "SMART APPLICATOR" CONVERSION: 8-2836222-4
SERVO FEED WITH "FINE CRIMP HEIGHT ADJUST": 8-2836222-5
- 5. ADJUSTMENT OF THE STRIPPER MAY BE REQUIRED WHEN MOVING THE APPLICATOR BETWEEN BENCH AND LEADMAKER APPLICATIONS.
- ⁶ APPLY PART NUMBER 1-23419-5 LOCTITE TO THREADS OF ITEMS 62.
- ⁷ GREASE THREADS, GROOVE AND O-RING ON ITEMS 139 & 152.
- ⁸ MAGNET MUST BE ORIENTED CORRECTLY IN ORDER TO PROPERLY ACTUATE THE COUNTER.
- ⁹ CRIMP HEIGHT REFERENCE SETTING WAS THE SETTING USED WHEN THE APPLICATOR WAS QUALIFIED AT THE FACTORY. ADJUSTMENT MAY BE NECESSARY WHEN RUNNING APPLICATOR IN THE FIELD.
- ¹⁰ TERMINAL PITCH NOT COMPATIBLE WITH MECHANICAL FEED.
- ¹¹ TO CONVERT THE APPLICATOR TO A NON-CARRIER CUTTING STYLE, REMOVE ITEM 13 AND ATTACH TO THE LOCATION ON BACK SIDE OF THE HOUSING. REFER TO INSTRUCTION SHEET FOR ADDITIONAL INFORMATION.
- ¹² ITEM #34 SETTING 4.8±0.5 FOR TERMINAL 32.0013P2000UR.
ITEM #34 SETTING 9.7±0.5 FOR TERMINAL 32.0012P2000UR.
- ¹³ TERMINAL LUBRICANT IS RECOMMENDED.

APPLICATOR STYLE CONVERSION CHART						
CONVERT TO	PART NUMBERS REQUIRED					
SERVO LATCH PLATE	2119951-1	-	8-2836222-5	1901094-3	-	2168400-6 (QUANTITY 2)
SMART APPLICATOR	2161326-1	-	8-2836222-4	-	-	-
PNEUMATIC FEED	2119950-1	1338683-8	5-18022-5	2119641-2	2119799-1	2063440-1

***WARNING**
ON INSTALLATION, SET WIRE X DISC, ITEM 40 TO LARGEST WIRE SIZE SETTING. USE OF SETTINGS BELOW MINIMUM REQUIRED CRIMP HEIGHT SETTING WILL CAUSE DAMAGE TO CRIMP TOOLING.

-77 -27 -25 -22	PART NO	DESCRIPTION	ITEM NO
- 2 2 2	2168083-1	SCR, SKT HD CAP, RoHS, M3 X 8.0	269
- 1 1 1	1633782-2	FENCE	267
- 1 1 1	2119782-1	FINE ADJUST HEAD ASM, PACIFIC STYLE	251

PACIFIC VERSION
Shown on sheets 3 of 4 & 4 of 4
(Atlantic version shown on sheets 1 of 4 & 2 of 4)

SET UP GAUGE	LOC	DIST	REVISIONS			
2119599-1	A	66	REV	DATE	BY	APPV
-	-	-	1	-	-	-

REV	DATE	BY	APPV	DESCRIPTION	DATE	BY	APPV
-	-	-	1	2119640-1	PUSH ROD, AIR FEED	-	250
-	-	-	1	2079988-1	BUSHING, LCH5-12, MISUMI	-	249
-	1	1	1	1-22279-3	SPRING, COMPRESSION	-	246
-	1	1	1	7-18023-7	SCR, SKT HD CAP M3 X 4.0	-	241
-	-	2	-	2168400-6	SHCS, LOW HEAD, RoHS, M5 X 16	-	240
-	-	-	1	2063440-1	AIR FEED MODULE	-	238
-	-	-	1	2119740-2	TAG, IDENTIFICATION	-	213
-	-	-	1	1901094-3	SPACER, FEEDER	-	198
-	-	-	2	21045-3	RING, RETAIN, EXTERN, 3/16 CRESCENT	-	172
-	1	1	1	994969-1	MAGNET, RARE EARTH HIGH ENERGY	-	166
-	REF	REF	REF	994970-2	COUNTER, MAGNETIC	-	164
-	-	-	1	240638-1	SPRING, FEED FINGER	-	163
-	1	1	1	8-21084-1	O-RING, .801 ID, .070 DIA. MAT.	-	152
-	-	-	1	2119641-2	FEED CAM, AIR FEED	-	151
-	1	1	1	2119798-2	DETENT PIN	-	145
-	1	1	1	2079383-8	SCR, BHSC, RoHS (M4 X 16)	-	144
-	4	4	4	2168400-5	SHCS, LOW HEAD, RoHS, M4 X 20	-	143
-	1	1	1	2-2119656-4	APPLICATOR BASIC ASSEMBLY, SF	-	141
-	1	1	1	2119650-1	RAM, ASIAN STYLE, SIDE FEED	-	140
-	1	1	1	2119092-2	BOLT, ADJUSTMENT	-	139
-	-	-	1	3-23627-7	PIN, RETAIN, GRVD, 3/16 X .854	-	137
-	-	-	1	2119799-1	HOLDER, FEED FINGER, AF	-	136
-	-	REF	-	SEE NOTE 4	MEMORY CHIP, PROGRAMMED	-	135
-	-	-	1	1633743-1	SERVO FEED LATCH ASM	-	133
-	-	REF	-	2119944-1	FEED FINGER ASSEMBLY, SF	-	117
-	1	1	1	2119955-1	ASSY, LUBRICATOR, SIDE FEED	-	113
-	1	1	1	455888-6	SPACER, CRIMPER	-	82
-	2	2	2	2079383-4	SCR, BHSC, RoHS (M4 X 8)	-	79
-	1	1	1	1803096-1	EXTENSION PLATE	-	78
-	1	1	1	22278-8	SPRING, COMPRESSION	-	77
-	1	1	1	854769-4	HOLDER, INS	-	74
-	1	1	1	2119956-1	DOCUMENTATION PACKAGE	-	71
-	1	1	1	2119791-6	DEPRESSOR, WIRE	-	70
-	1	1	1	2119943-1	WASHER, SPACER	-	69
-	1	-	1	2119740-1	TAG, IDENTIFICATION	-	67
-	2	2	2	2168078-1	SCREW, DRIVE, RH, RoHS, 2 x .188	-	66
-	1	1	1	2119793-1	LIMITER, ADJUSTMENT BOLT	-	63
-	3	3	3	992763-5	SCR, SET, SOC, CONE POINT, M3 X 4.0	-	62
-	-	-	1	5-18022-5	SCR, HEX HD CAP, M4 X 6.0	-	59
-	1	1	1	21028-2	PIN, SLOTTED SPRING .062 X .250	-	58
-	-	-	1	1338683-8	FEED PAWL	-	56
-	2	2	2	2168083-3	SCR, SKT HD CAP, RoHS, M4 X 12.0	-	53
-	1	1	1	5018030-1	NUT, HEX, REG, RoHS, M3	-	52
-	1	1	1	811242-5	BUMPER, HOLD DOWN	-	51
-	1	1	1	690753-2	SPACER, TONKER	-	50
-	-	-	1	18023-9	SCR, SKT HD CAP M4 X 6.0	-	49
-	1	1	1	2079383-7	SCR, BHSC, RoHS (M8 X 25)	-	41
-	1	1	1	2119645-1	DISC, NUMBERED FA WIRE ADJUSTMENT	-	40
-	1	1	1	2119957-1	APPLICATOR SHIM PACK	-	39
-	1	1	1	2119644-2	RAM WASHER, PRECISION	-	38
-	1	1	1	1-1752356-3	SUPPORT, TERMINAL	-	34
-	2	2	2	2079383-5	SCR, BHSC, RoHS (M4 X 20)	-	33
-	1	1	1	2161328-1	HEX HEAD, FLANGED, M5 X 8mm LONG	-	32
-	1	1	1	1320908-4	SPACER, STRIP GUIDE	-	30
-	1	1	1	2119959-2	ASSEMBLY, STRIP GUIDE	-	29
-	1	1	1	2-455888-4	SPACER, CRIMPER	-	28
-	1	1	1	1320928-4	STRIP GUIDE	-	24
-	1	1	1	2168083-2	SCR, SKT HD CAP, RoHS, M4 X 8.0	-	21
-	2	2	2	1-18028-2	WASHER, FLAT, REG M4	-	20
-	1	1	1	2119533-1	STRIPPER, SIDE FEED	-	19
-	1	1	1	2119806-1	INSERT, SHEAR	-	13
-	1	1	1	3-22280-3	SPRING, COMPRESSION	-	12
-	1	1	1	1-356885-4	STOP, SHEAR	-	11
-	1	1	1	2119805-1	SHEAR HOLDER, FRONT	-	10
-	1	1	1	1803095-1	FLOATING SHEAR, FRONT	-	9
-	1	1	1	7-1633933-2	ANVIL, COMBINATION	-	8
-	-	-	-	-	-	-	7
-	-	-	-	-	-	-	6
-	1	1	1	1-2119780-2	DEPRESSOR, SHEAR	-	5
-	-	-	-	-	-	-	4
-	-	-	-	-	-	-	3
-	-	-	-	-	-	-	2
-	1	1	1	5-456408-1	CRIMPER, WIRE PREMIUM	-	1

DIMENSIONS: mm		TOLERANCES UNLESS OTHERWISE SPECIFIED:		OWN: J. HOU 01MAR2016	TE Connectivity Harrisburg, PA 17105-3608
		0 PLC ±. 1 PLC ±. 2 PLC ±. 3 PLC ±. 4 PLC ±. ANGLES ±. FINISH ±.		CHK: L. ZHANG 01MAR2016	
MATERIAL:		FINISH:		APV: H. GUO 01MAR2016	NAME: Ocean Side Feed Applicator
WEIGHT:		SCALE: 1:2		SIZE: A1	CAGE CODE: 00779
Customer Accessible Production Drawing		SHEET 3 OF 4		REV A	

