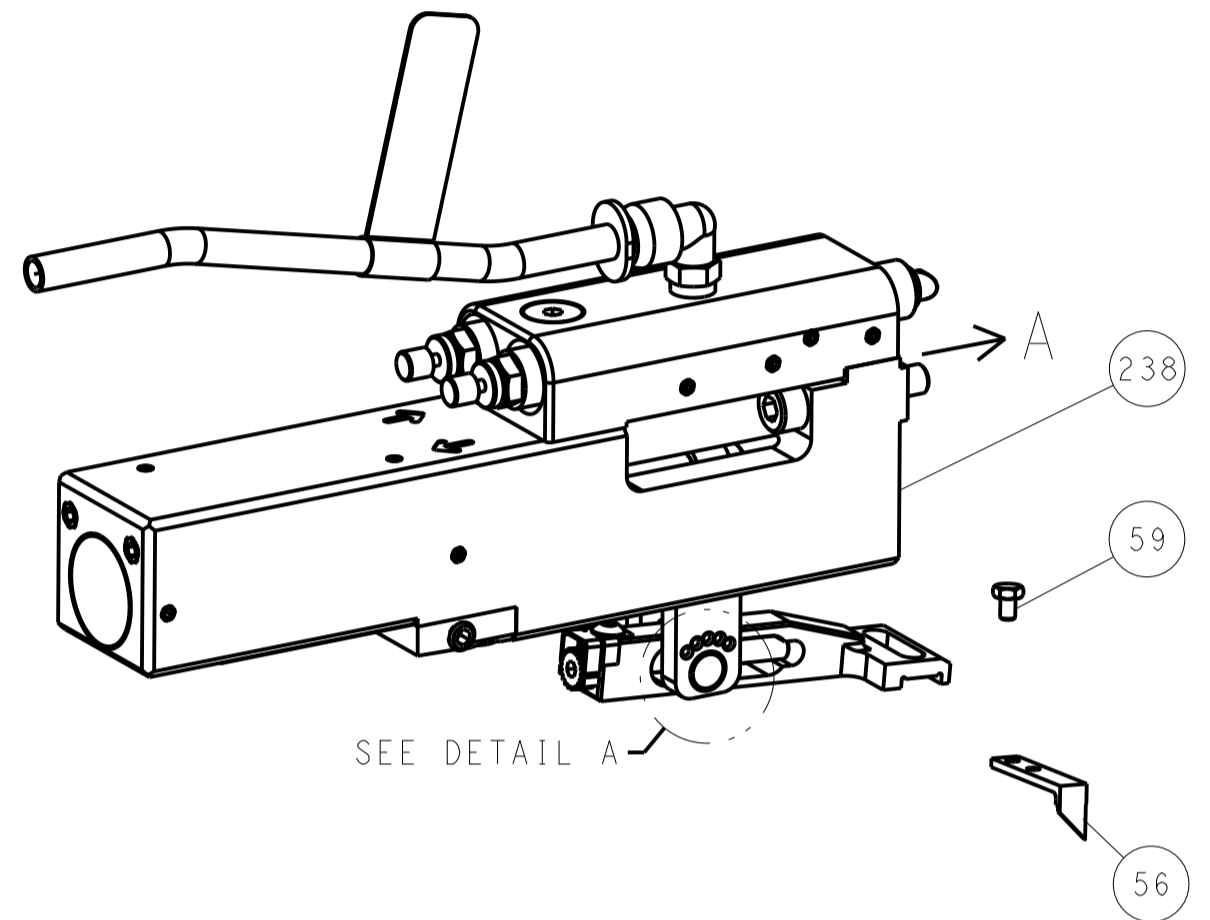


LOC	DIST	REV	DATE	BY	APP'D
A	66				

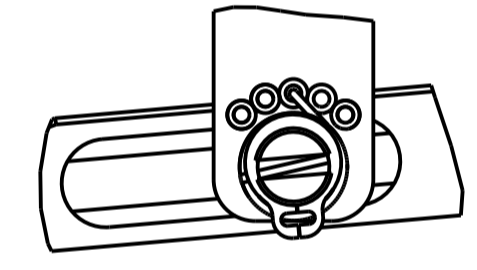
FEED TYPE

PNEUMATIC



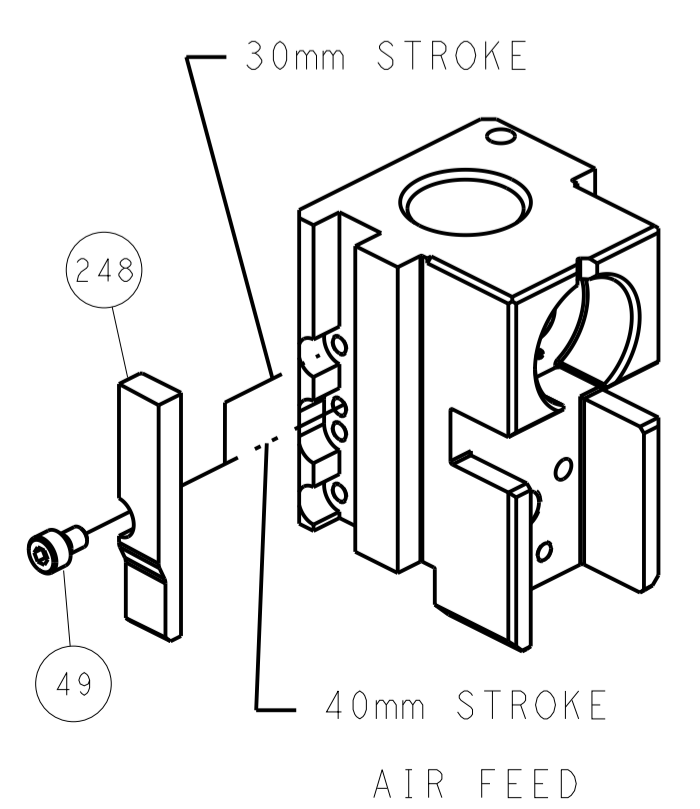
SEE DETAIL A

FEED SPRING SETTING POSITION (SHOWN FROM REAR SIDE)

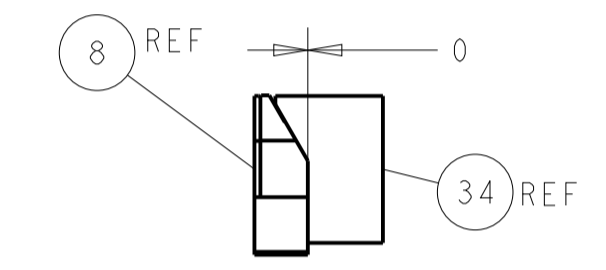
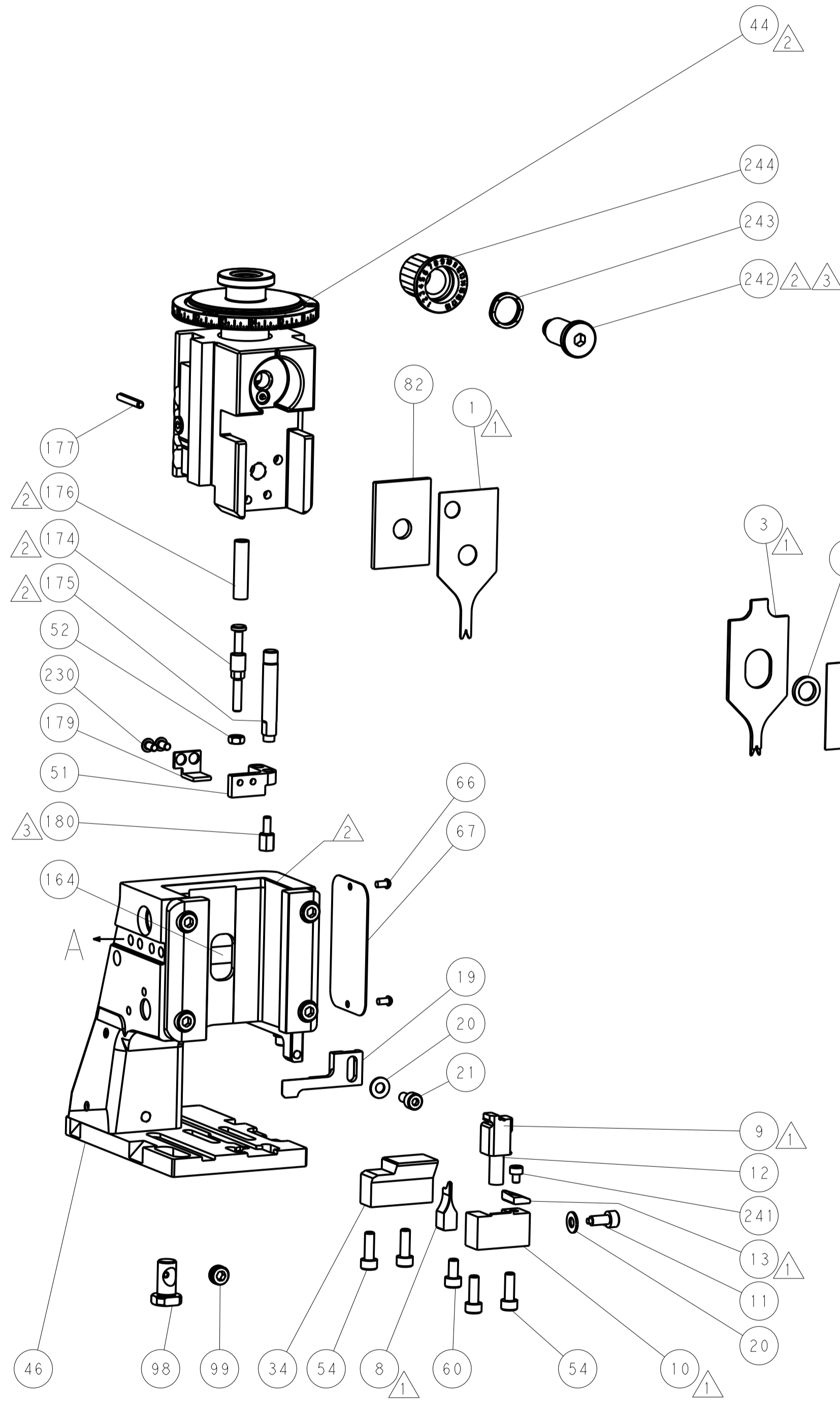
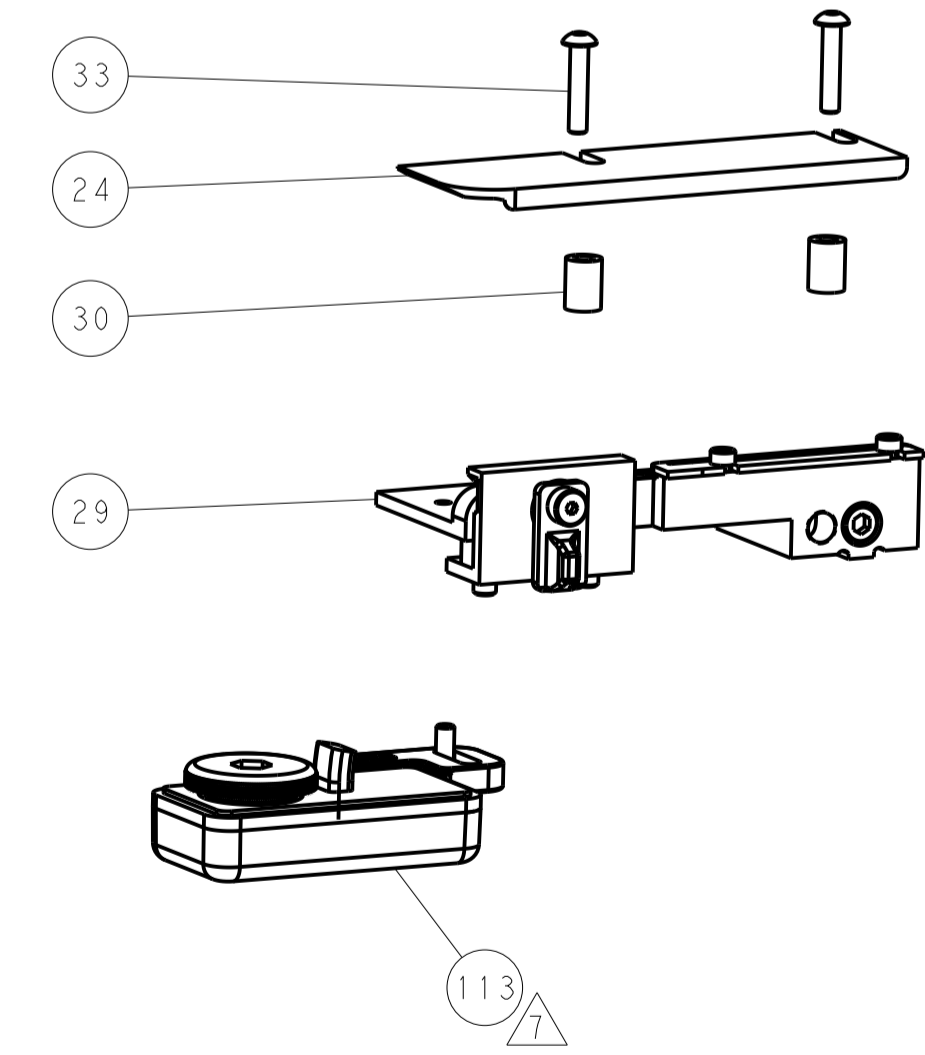


DETAIL A

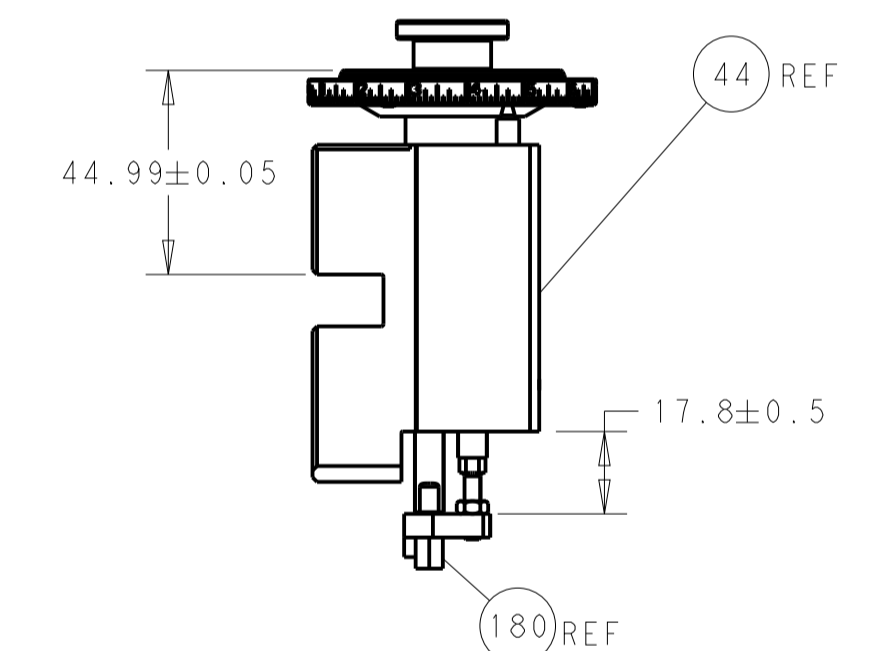
CAM POSITION



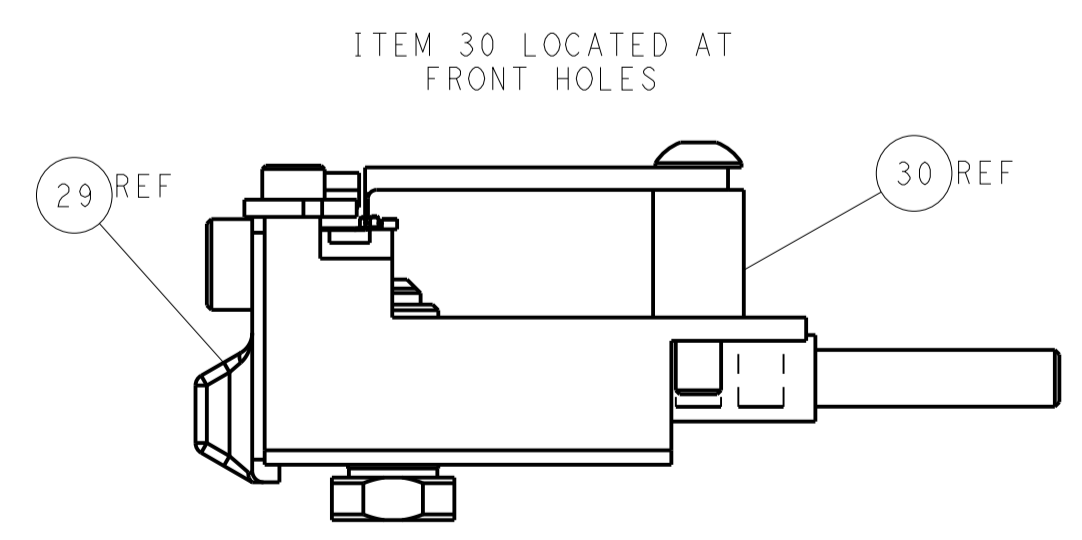
AIR FEED



TERMINAL SUPPORT LOCATION



RAM AND HOLDDOWN SET-UP



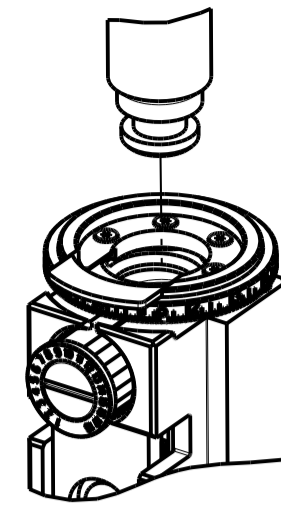
FEED TRACK POSITION GUIDE BY INSULATION BARREL

ATLANTIC VERSION
 Shown on sheets 1 of 4 & 2 of 4
 (Pacific version shown on sheets 3 of 4 & 4 of 4)

DIMENSIONS: mm 		TOLERANCES UNLESS OTHERWISE SPECIFIED: 0 PLC ± 1 PLC ± 2 PLC ± 3 PLC ± 4 PLC ± ANGLES ±		DWN X.ZHAO 22DEC2015 CHK L.ZHANG 22DEC2015 APVD H.GUO 22DEC2015		TE Connectivity Harrisburg, PA 17105-3608	
MATERIAL:		FINISH:		PRODUCT SPEC:		NAME: Ocean Side Feed Applicator	
WEIGHT:		SCALE: 1:2		SIZE: A1 CAGE CODE: 00779 DRAWING NO: 2836152		RESTRICTED TO:	
Customer Accessible Production Drawing		SHEET 2 OF 4		REV D		SHEETS 3 & 4 ARE NOT REQUIRED FOR ATLANTIC VERSION	

PART NUMBER	REVISION	DESCRIPTION	FEED TYPE
2-2836152-2	D	FINE CRIMP HEIGHT ADJUST	PNEUMATIC
7-2836152-7	A	CRIMP TOOLING KIT	-

PACIFIC VERSION TERMINATOR
INTERFACE ADAPTER



APPLICATOR DATA		
CRIMP	SIZE	TYPE
WIRE	0.58 mm [.023]	F
INSUL	0.76 mm [.030]	F

APPLICATOR INSTRUCTIONS
408-35042

TERMINAL DATA: HIROSE TERMINAL HIROSE CRIMP SPECIFICATION	
TERMINAL NAME: TERMINAL	
WIRE STRIP LENGTH 1.00-1.40 mm [.039-.055 IN]	INSULATION DIAMETER RANGE Ø0.56-0.58 mm [.022-.023 IN]
TERMINAL APPLICATION SPECIFICATION (A)TAD-P-0506 Rev 1	
TERMINALS APPLIED	
TE TERMINAL 2113112-1	HIROSE TERMINAL DF57-2830SCF

WIRE SIZE	CRIMP HEIGHT mm [INCH]	CRIMP HEIGHT REFERENCE SETTING
28 AWG OR 0.08mm2	0.46 +/- 0.02 [.018 +/- .001]	8.0
30 AWG OR 0.05mm2	0.42 +/- 0.02 [.017 +/- .001]	8.4



1. RECOMMENDED SPARE PARTS
2. REFER TO SUPPLIED INSTRUCTION SHEET FOR CLEANING, LUBRICATION AND STORAGE OF APPLICATOR.
3. APPLY PART NUMBER 1-23419-5 LOCTITE TO THREADS OF ITEM 180. APPLY PART NUMBER 2-23419-6 LOCTITE TO THREADS OF ITEM 242.
4. CRIMP HEIGHT REFERENCE SETTING WAS THE SETTING USED WHEN THE APPLICATOR WAS QUALIFIED AT THE FACTORY. ADJUSTMENT MAY BE NECESSARY WHEN RUNNING APPLICATOR IN THE FIELD.
5. UNLESS SPECIFIED OTHERWISE TORQUE VALUES SHALL BE USED PER DOCUMENT, 101-35000.
6. TERMINAL PITCH NOT COMPATIBLE WITH MECHANICAL FEED.
7. TERMINAL LUBRICANT IS RECOMMENDED.

***WARNING**
ON INSTALLATION, SET WIRE DISC TO CRIMP HEIGHT REFERENCE SETTING FOR LARGEST WIRE SIZE. CRIMP HEIGHT REFERENCE SETTINGS GREATER THAN THE VALUE SHOWN MAY CAUSE DAMAGE TO THE CRIMP TOOLING, REFER TO THE INSTRUCTION SHEET FOR PROPER SETUP AND ADJUSTMENTS.

LOC	DIST	REV	DATE	BY	APPD
A	66				

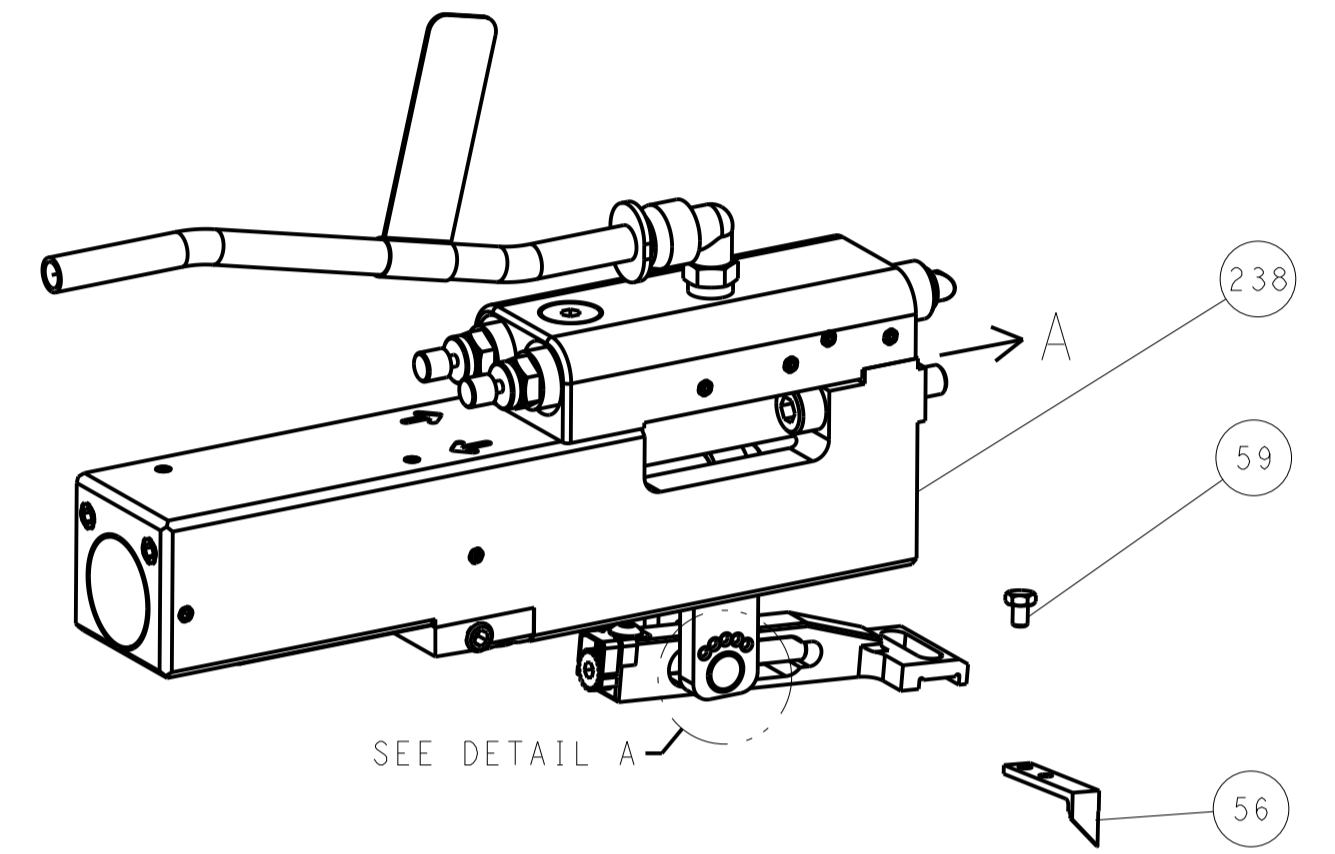
REVISIONS					
REV	DATE	DESCRIPTION	DATE	BY	APPD
-	1	2119082-1			244
-	1	2079764-1			243
3	-	1	2119083-1		242
-	1	7-18023-7			241
-	1	2844940-1			238
-	2	1-2079383-0			230
3	-	1	1-1752354-2		180
-	1	1-1633764-2			179
-	1	993111-1			177
-	1	8-22280-7			176
-	1	1752353-2			175
-	1	1901680-2			174
-	REF	994970-2			164
-	1	2119641-2			151
-	1	2168083-8			144
-	4	2168083-9			143
-	1	1-1803583-0			141
-	1	1803516-1			140
7	-	1	2119955-1		113
-	1	2844908-1			99
-	1	2844907-1			98
-	1	2-455888-2			82
-	1	5-547505-2			77
-	1	854769-4			74
-	1	1803607-3			71
-	1	2119740-1			67
-	2	2168078-1			66
-	1	5-18022-5			59
-	1	21028-2			58
-	1	1338685-1			56
-	1	1-5018030-0			52
-	1	1901681-8			51
-	1	18023-9			49
-	1	1803602-1			41
-	1	2-1752356-6			34
-	2	2079383-5			33
-	2	1-2844962-4			30
-	1	2844992-1			29
-	1	455888-3			28
-	1	1-1320928-9			24
-	1	2168083-2			21
-	2	1-18028-2			20
-	1	2119533-4			19
1	-	1	2119806-1		13
-	1	3-22280-3			12
-	1	1-356885-4			11
1	-	1	2119805-1		10
1	-	1	1633861-1		9
1	1	1	1803337-2		8
-	-	-			7
-	-	-			6
-	1	2119780-1			5
-	1	238011-7			4
1	1	1	1803223-8		3
-	-	-			2
1	1	1	1803323-9		1

PACIFIC VERSION
Shown on sheets 3 of 4 & 4 of 4
(Atlantic version shown on sheets 1 of 4 & 2 of 4)

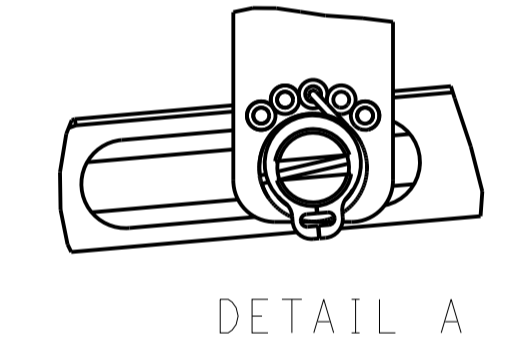
DIMENSIONS:		TOLERANCES UNLESS OTHERWISE SPECIFIED:		DRAWN		DATE	
mm	0 PLC ±	1 PLC ±	2 PLC ±	3 PLC ±	4 PLC ±	CHK	22DEC2015
	ANGLES	FINISH		APVD		CHK	22DEC2015
				NAME		CHK	22DEC2015
				PRODUCT SPEC		CHK	22DEC2015
				APPLICATION SPEC		CHK	22DEC2015
				SIZE		CHK	22DEC2015
				SCALE		CHK	22DEC2015
				SHEET		CHK	22DEC2015
				REV		CHK	22DEC2015

LOC		REVISONS	
A	66	DESCRIPTION	DATE
		SEE SHEET 1	

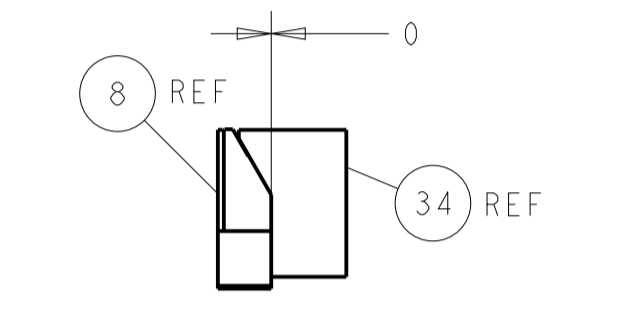
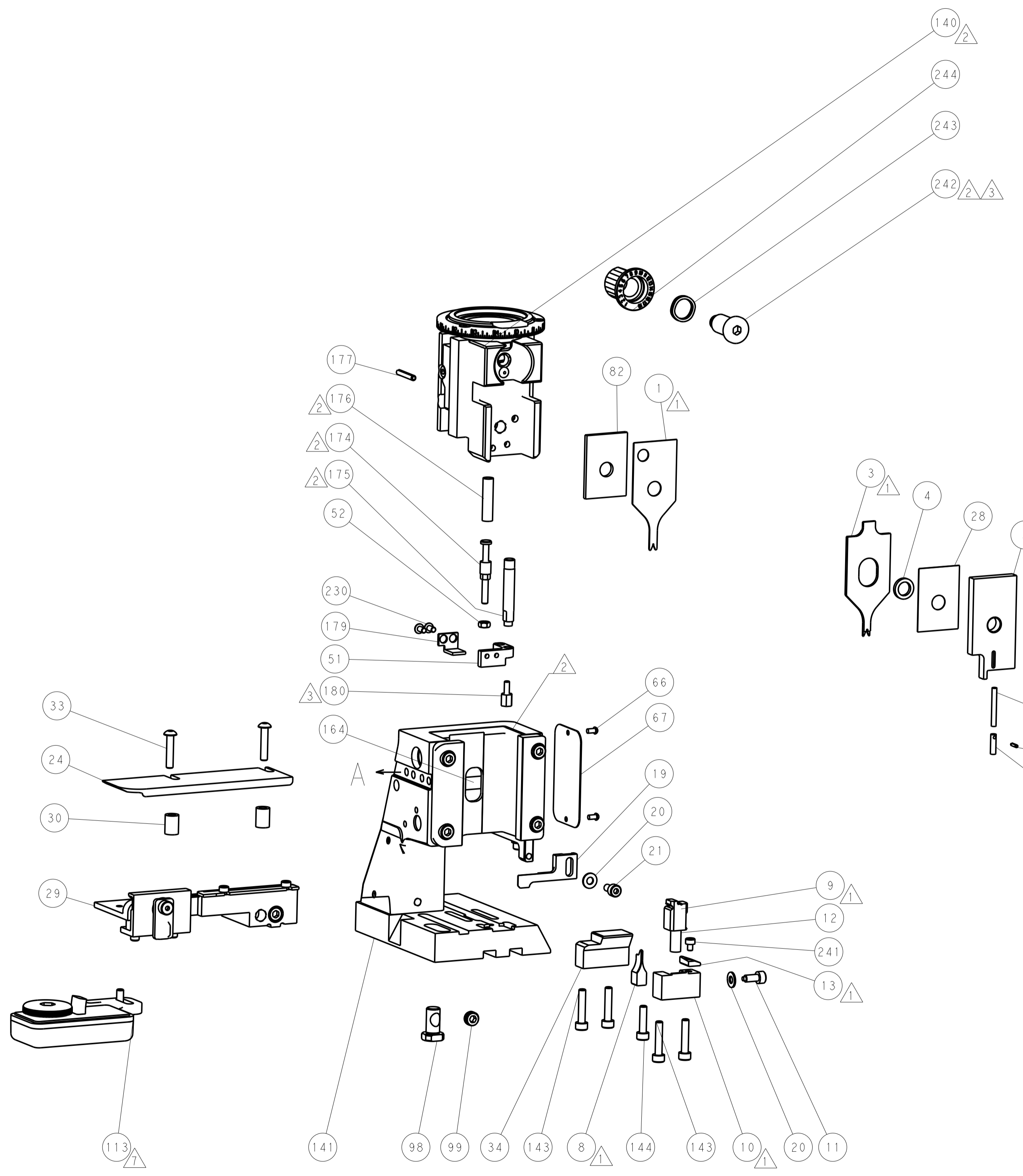
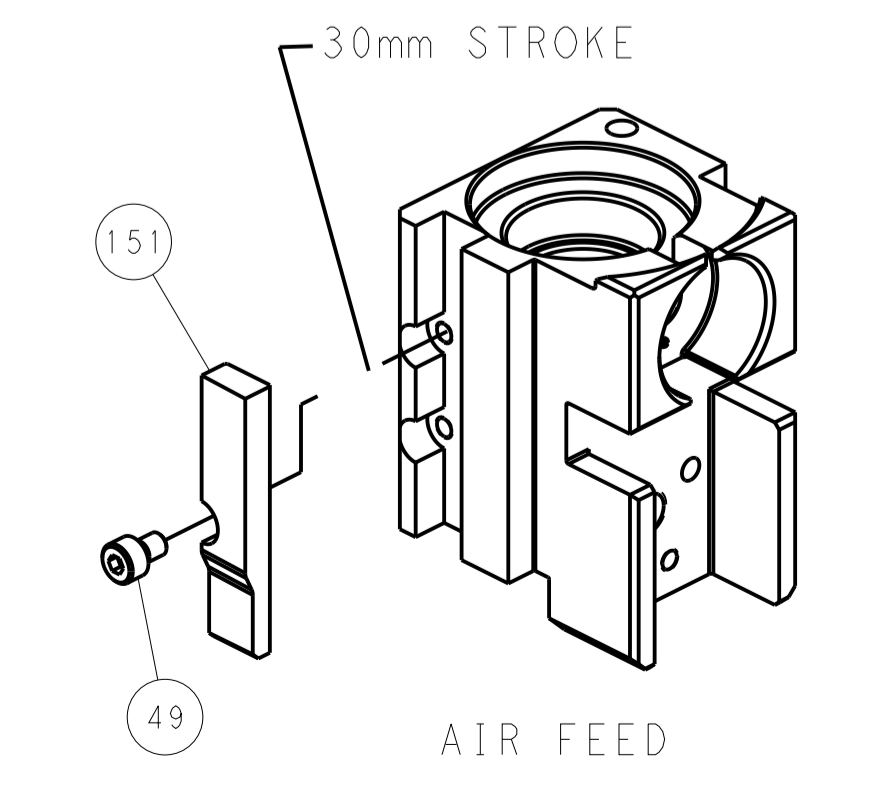
FEED TYPE PNEUMATIC



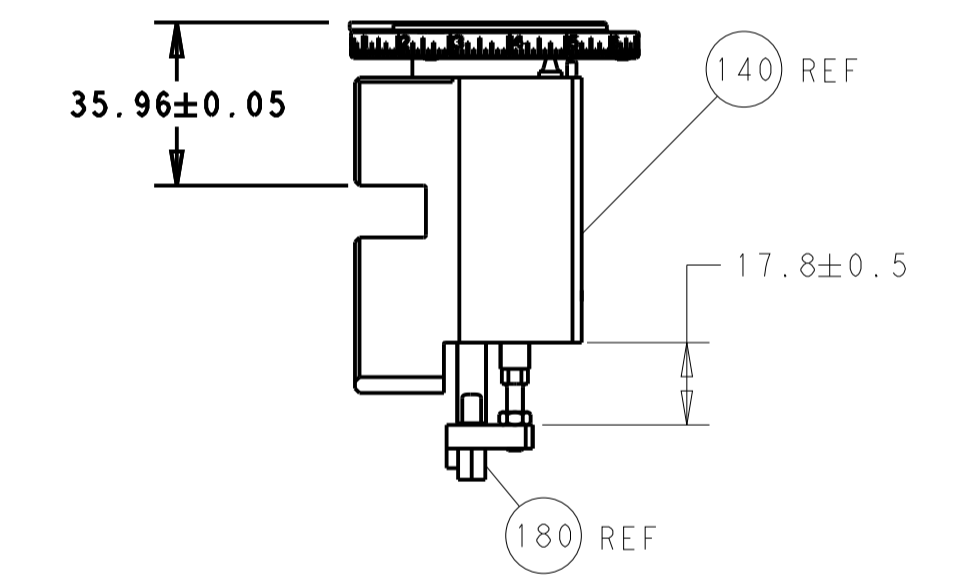
FEED SPRING SETTING POSITION (SHOWN FROM REAR SIDE)



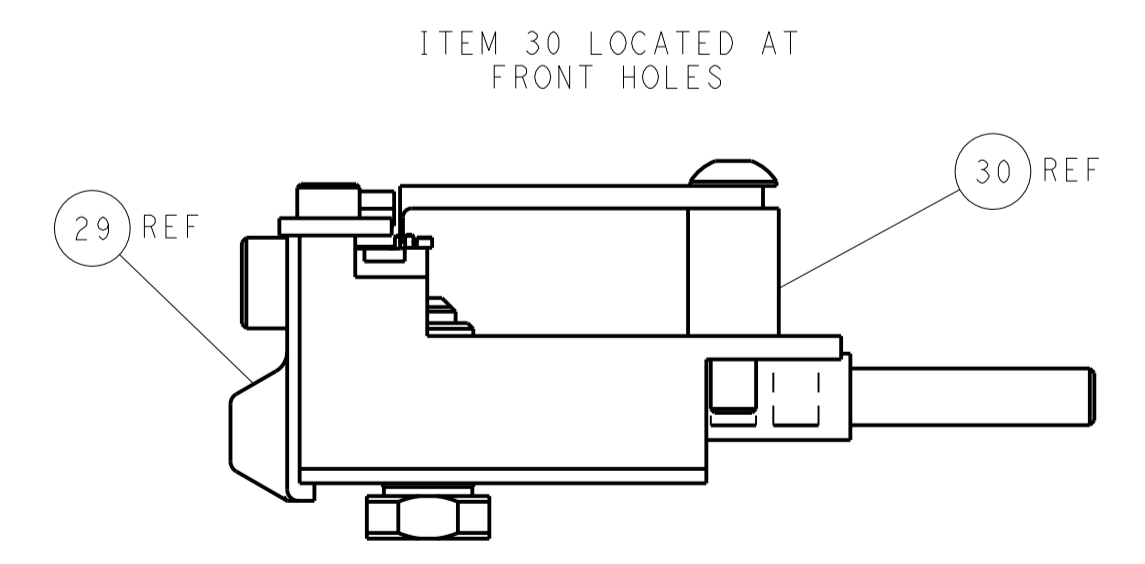
CAM POSITION



TERMINAL SUPPORT LOCATION



RAM AND HOLDDOWN SET-UP



FEED TRACK POSITION GUIDE BY INSULATION BARREL

PACIFIC VERSION
 Shown on sheets 3 of 4 & 4 of 4
 (Atlantic version shown on sheets 1 of 4 & 2 of 4)

DIMENSIONS:		TOLERANCES UNLESS OTHERWISE SPECIFIED:		DWG: X.ZHAO 22DEC2015		TE Connectivity	
mm	0 PLC ±	1 PLC ±	2 PLC ±	3 PLC ±	4 PLC ±	5 PLC ±	Harrisburg, PA 17105-3608
	ANGLES			CHK: L.ZHANG 22DEC2015	NAME: Ocean Side Feed Applicator		
MATERIAL:	FINISH:			APVD: H.GUO 22DEC2015	PRODUCT SPEC:		
				APPLICATION SPEC:		SIZE: CAGE CODE: DRAWING NO: RESTRICTED TO:	
				WEIGHT:		A1 00779 ©=2836152	
Customer Accessible Production Drawing				SCALE: 1:2	SHEET 4 OF 4	REV D	