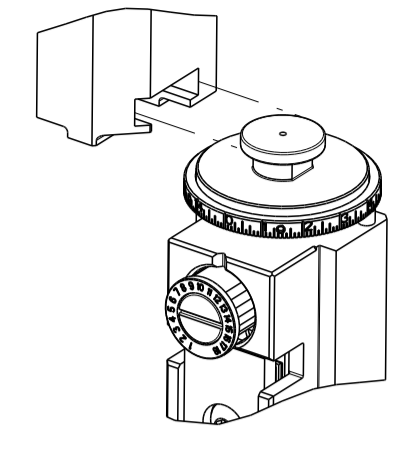


PART NUMBER	REVISION	DESCRIPTION	FEED TYPE
2836071-2	H	FINE CRIMP HEIGHT ADJUST	PNEUMATIC
7-2836071-7	G	CRIMP TOOLING KIT	-

ATLANTIC VERSION TERMINATOR  
INTERFACE ADAPTER



APPLICATOR DATA		
CRIMP	SIZE	TYPE
WIRE	1.07 mm [ .042 ]	F
INSUL	-	-

APPLICATOR INSTRUCTIONS  
408-35042

TERMINAL DATA: AMPHENOL TERMINAL AMPHENOL CRIMP SPECIFICATION			
TERMINAL NAME: SOCKET CONTACT, PLUG			
WIRE STRIP LENGTH		INSULATION DIAMETER RANGE	
2.29-3.05mm [ .090-.120 IN ]		∅	
TERMINAL APPLICATION SPECIFICATION		349-50747 Rev N	-
TERMINALS APPLIED		4	
TE TERMINAL	AMPHENOL TERMINAL	TE TERMINAL	AMPHENOL TERMINAL
1832994-1	FKCP03401A	1832993-1	FKCP03301A

WIRE SIZE	CRIMP HEIGHT mm [INCH]	CRIMP HEIGHT REFERENCE SETTING
5	0.73+/-0.03 [ .029+/- .001 ]	3.9
6	0.73+/-0.03 [ .029+/- .001 ]	4.4

- 1 RECOMMENDED SPARE PARTS
- 2 REFER TO SUPPLIED INSTRUCTION SHEET FOR CLEANING, LUBRICATION AND STORAGE OF APPLICATOR.
- 3 CRIMP HEIGHT REFERENCE SETTING WAS THE SETTING USED WHEN THE APPLICATOR WAS QUALIFIED AT THE FACTORY. ADJUSTMENT MAY BE NECESSARY WHEN RUNNING APPLICATOR IN THE FIELD.
- 4 TERMINAL LUBRICANT RECOMMENDED.
- 5 WIRE CRIMP HEIGHT FOR SOLID WIRE: RG174,OR RG316,OR RG188
- 6 WIRE CRIMP HEIGHT FOR STANDARD WIRE: RG174,OR RG316,OR RG188,OR DACAR462-2
- 7. UNLESS SPECIFIED OTHERWISE TORQUE VALUES SHALL BE USED PER DOCUMENT, 101-35000.

**\*WARNING**  
ON INSTALLATION, SET WIRE DISC TO CRIMP HEIGHT REFERENCE SETTING FOR LARGEST WIRE SIZE. CRIMP HEIGHT REFERENCE SETTINGS GREATER THAN THE VALUE SHOWN MAY CAUSE DAMAGE TO THE CRIMP TOOLING, REFER TO THE INSTRUCTION SHEET FOR PROPER SETUP AND ADJUSTMENTS.

**FOR LEADMAKER APPLICATIONS**

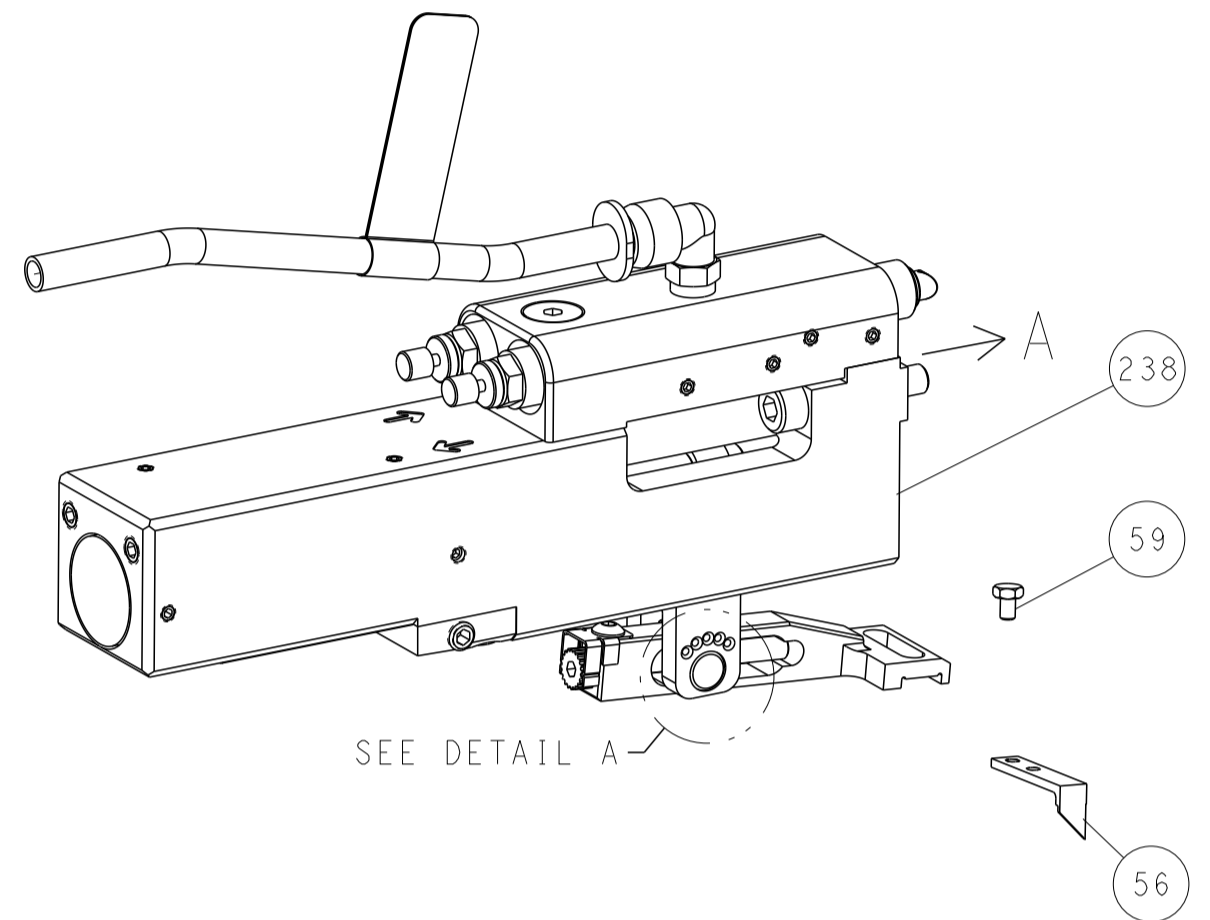
LOC	DIST	REVISIONS					
A	66	P	LTN	DESCRIPTION	DATE	OWN	APVD
		F		ECR-19-006111	16APR2019	FJ	CT
		F1		ECR-20-010088	15JUL2020	JWC	TE
		G		ECR-22-148833	08AUG2022	JWC	GB
		H		ECR-24-213111	27JUN2024	AB	TE

-	1	1-1803945-6	TONKER -	300		
-	1	1-22278-9	SPRING, COMPRESSION	299		
-	2	4-18032-3	SCR, SET, FLT PNT, M3 X 6.0	298		
-	1	1803944-1	SPACER, TONKER	297		
-	1	2119641-1	FEED CAM, AIR FEED	248		
-	1	2844940-1	AIR FEED MODULE	238		
-	REF	994970-2	COUNTER, MAGNETIC	164		
4	-	1	2119955-1	ASSY, LUBRICATOR, SIDE FEED	113	
-	1	2844908-1	SCREW, LOCKING	99		
-	1	2844907-1	POST, LOCKING	98		
-	1	1-455888-1	SPACER, CRIMPER -	82		
-	1	1803607-3	DOCUMENTATION PACKAGE	71		
-	1	2119740-1	TAG, IDENTIFICATION	67		
-	2	2168078-1	SCREW, DRIVE, RH, RoHS, 2 x .188	66		
-	1	2168083-2	SCR, SKT HD CAP, RoHS, M4 X 8.0	60		
-	1	5-18022-5	SCR, HEX HD CAP, M4 X 6.0	59		
-	1	1338685-1	PAWL, FEED	56		
-	4	2168083-3	SCR, SKT HD CAP, RoHS, M4 X 12.0	54		
-	2	2168083-3	SCR, SKT HD CAP, RoHS, M4 X 12.0	53		
-	1	18023-9	SCR, SKT HD CAP M4 X 6.0	49		
-	1	1803583-9	APPLICATOR BASIC ASSEMBLY, SF	46		
-	1	1803515-1	RAM ASSEMBLY, SF ATLANTIC	44		
-	1	1803602-1	SCR, BHSC, RoHS (M8 X 25)	41		
-	1	1752356-6	SUPPORT, TERMINAL	34		
-	2	2079383-5	SCR, BHSC, RoHS (M4 X 20)	33		
-	2	2-2844962-3	SPACER, CYLINDRICAL, STRIP GUIDE	30		
-	1	2844992-1	ASSEMBLY, STRIP GUIDE -	29		
-	1	455888-9	SPACER, CRIMPER -	28		
-	1	1320928-2	STRIP GUIDE -	24		
-	1	2168083-2	SCR, SKT HD CAP, RoHS, M4 X 8.0	21		
-	1	1-18028-2	WASHER, FLAT, REG M4	20		
-	1	2119533-1	STRIPPER, SIDE FEED	19		
-	1	3-22280-3	SPRING, COMPRESSION	12		
-	1	356885-5	STOP, SHEAR	11		
1	-	1	1552193-1	HOLDER, SHEAR	10	
1	-	1	1803251-1	SHEAR, FLOATING	9	
1	1	1	2-1633733-5	ANVIL, WIRE	8	
-	1	1	2-240641-8	SPACER	7	
-	-	-	-	6		
-	1	1	1803419-6	DEPRESSOR, SHEAR	5	
-	-	-	-	4		
-	-	-	-	3		
-	-	-	-	2		
1	1	1	3-1633713-0	CRIMPER, WIRE PREMIUM	1	
-	77	-	2	PART NO	DESCRIPTION	ITEM NO

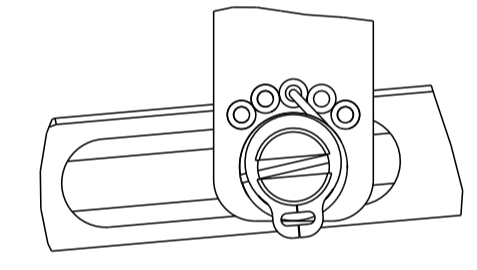
<small>THIS DRAWING IS UNPUBLISHED. RELEASED FOR PUBLICATION 2015. ALL RIGHTS RESERVED. THIS DRAWING IS UNPUBLISHED. RELEASED FOR PUBLICATION 2015. ALL RIGHTS RESERVED.</small>		DWN BOB HIGMAN 22FEB2016 CHK T. ELBIN 22FEB2016 APVD T. ELBIN 22FEB2016	TE Connectivity Harrisburg, PA 17105-3608
DIMENSIONS: mm 		TOLERANCES UNLESS OTHERWISE SPECIFIED: 0 PLC ± 1 PLC ± 2 PLC ± 3 PLC ± 4 PLC ± ANGLES ± FINISH	NAME Ocean Side Feed Applicator SIZE CAGE CODE DRAWING NO RESTRICTED TO A   00779 C=2836071 CUSTOMER ACCESSIBLE PRODUCTION DRAWING SCALE 1:2 SHEET 1 OF 4 REV H

LOC	DIST	REVISIONS					
		P	LTN	DESCRIPTION	DATE	OWN	APVD
A	-	-	-	SEE SHEET 1	-	-	-

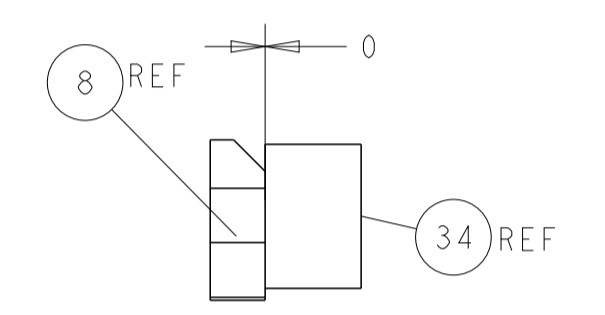
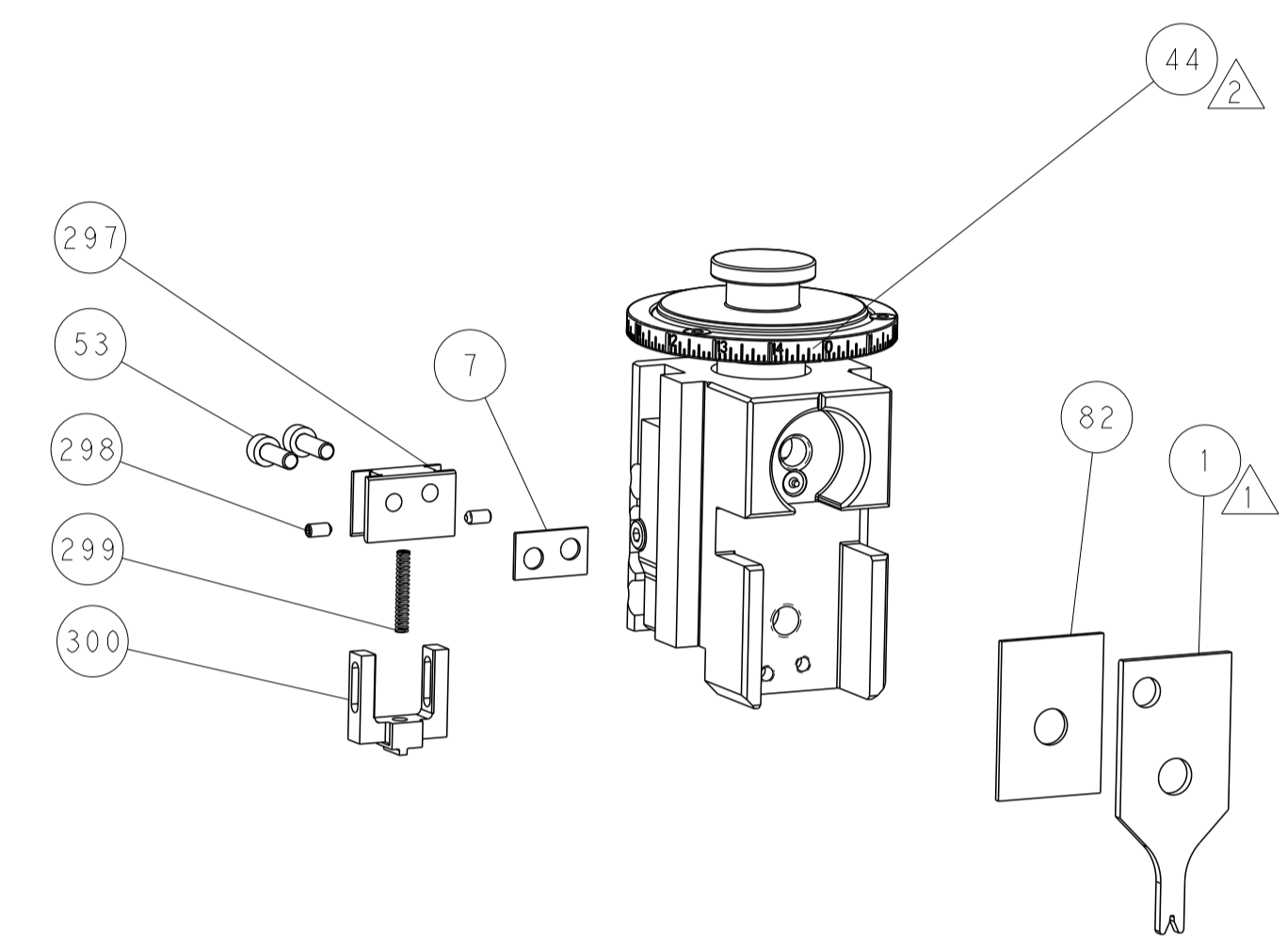
### FEED TYPE PNEUMATIC



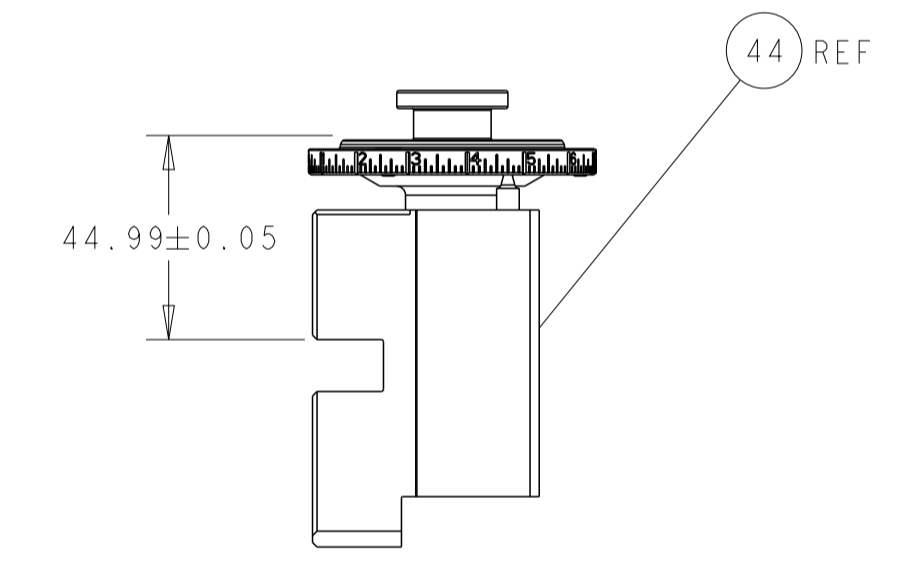
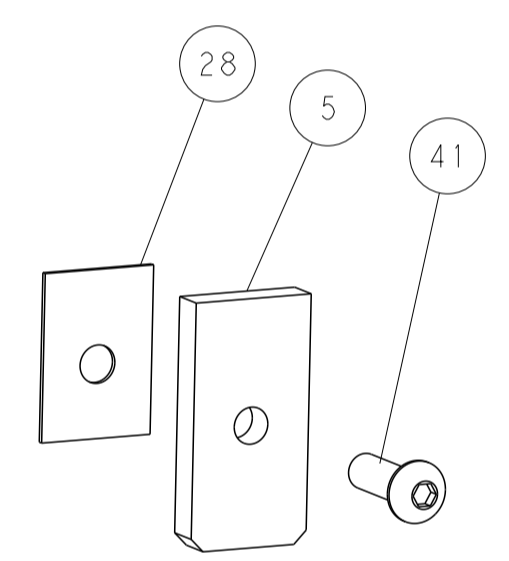
FEED SPRING SETTING POSITION  
(SHOWN FROM REAR SIDE)



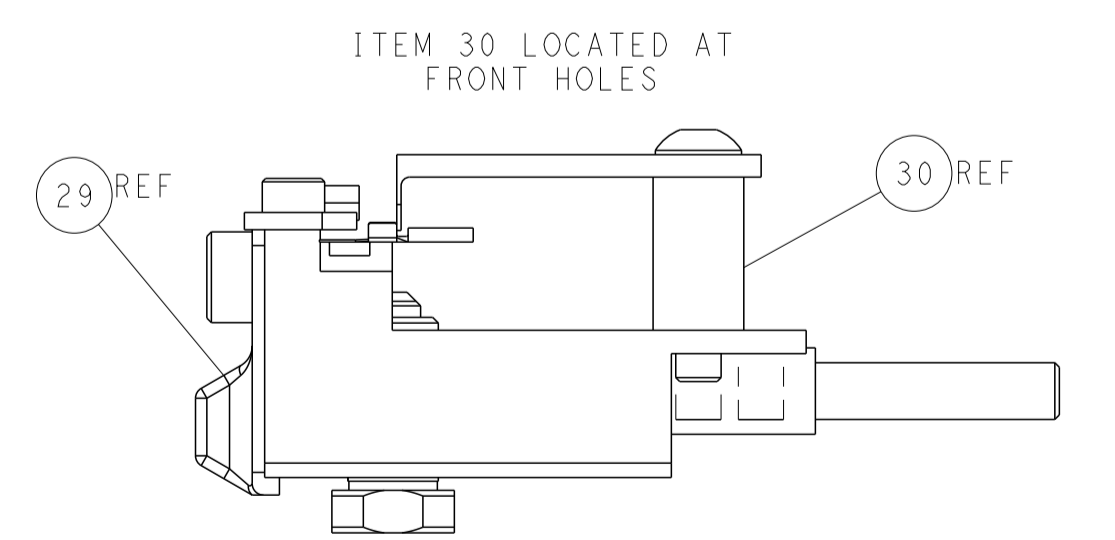
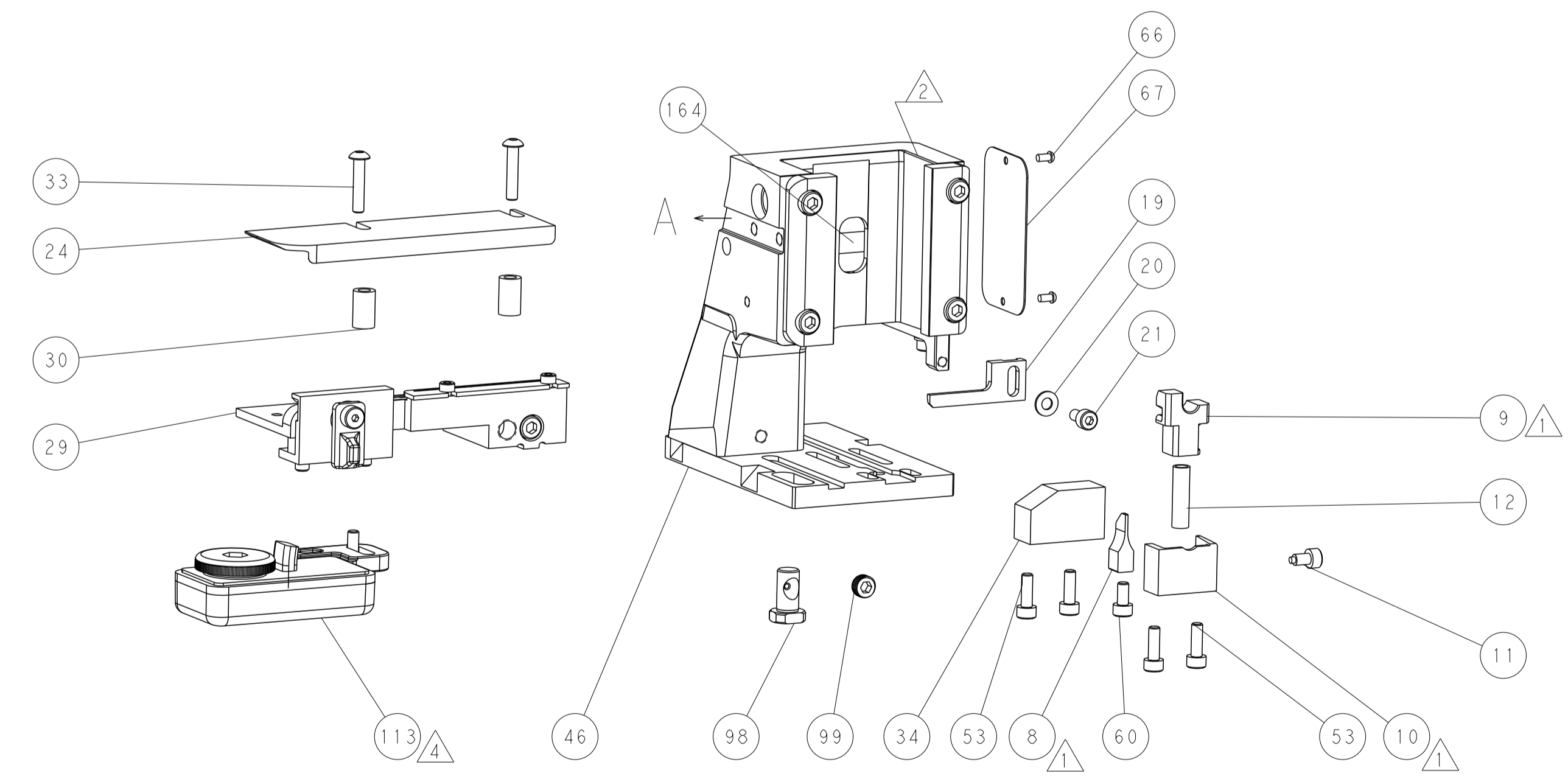
DETAIL A



TERMINAL SUPPORT LOCATION

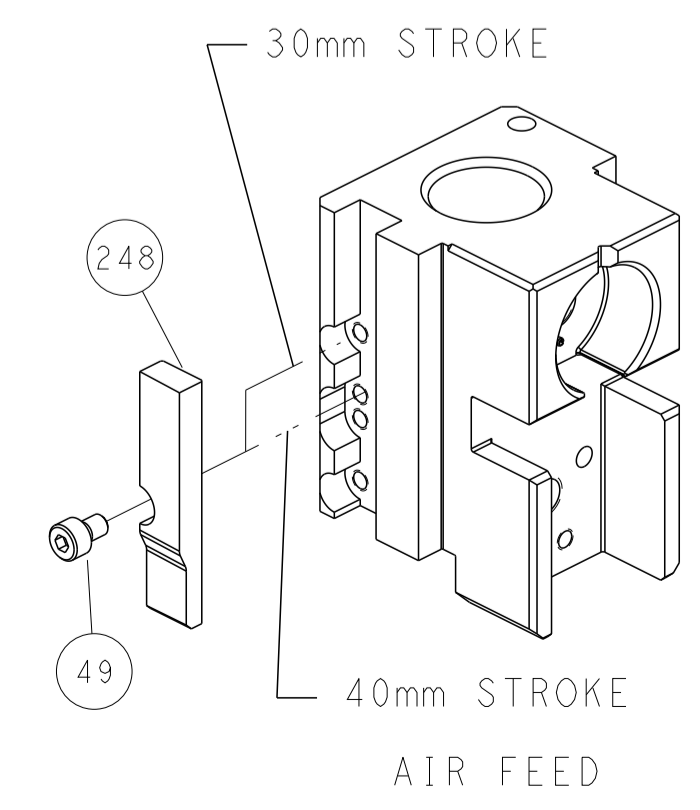


RAM SET-UP



FEED TRACK POSITION  
GUIDE BY WIRE BARREL

### CAM POSITIONS



AIR FEED

<small>THIS DRAWING IS UNPUBLISHED. RELEASED FOR PUBLICATION 2015. COPYRIGHT 2015 BY TYCO ELECTRONICS CORPORATION. ALL RIGHTS RESERVED.</small>		DWN BOB_HIGMAN 22FEB2016 CHK T. ELBIN 22FEB2016 APVD T. ELBIN 22FEB2016	TE Connectivity Harrisburg, PA 17105-3608
DIMENSIONS: mm TOLERANCES UNLESS OTHERWISE SPECIFIED: 0 PLC ± 1 PLC ± 2 PLC ± 3 PLC ± 4 PLC ± ANGLES ± FINISH		NAME Ocean Side Feed Applicator PRODUCT SPEC APPLICATION SPEC SIZE CAGE CODE DRAWING NO WEIGHT A1 00779 C=2836071	RESTRICTED TO SCALE 1:2 SHEET 2 OF 4 REV H
MATERIAL: -		CUSTOMER ACCESSIBLE PRODUCTION DRAWING	