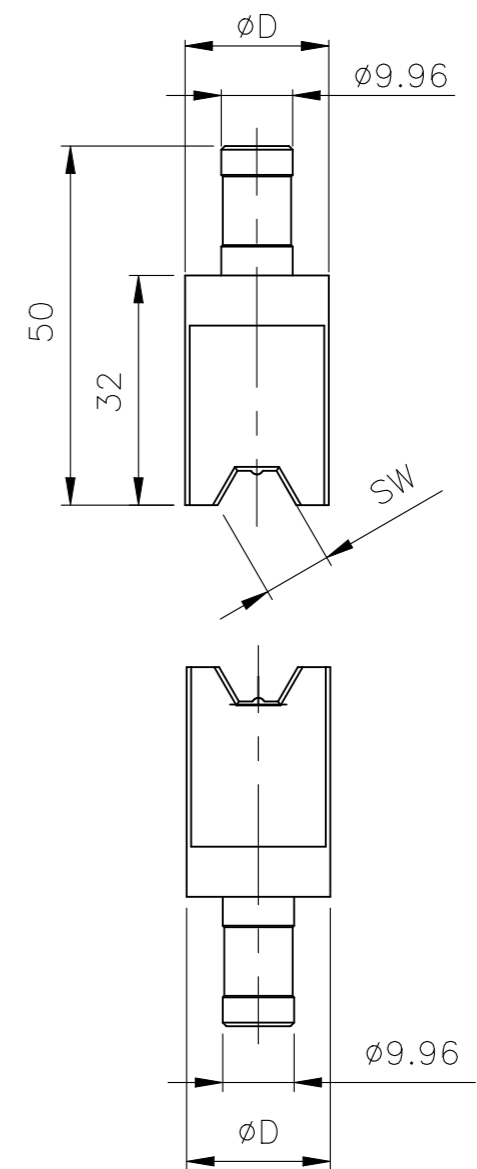


PROJECT	PRJ-14-000004825
PART NO	X-2823558-X
HV DESC	CRIMP INSERTS
CUSTOMER	GENERAL MARKET

REVISIONS				
P	LTR	DESCRIPTION	DATE	APVD
	A4	-36 OBSOLETE	31MAR2021	GK SE

S.NO	BARREL INNER DIAMETER	BARREL OUTER DIAMETER	RECOMMENDED CRIMP INSERT	RECOMMENDED CRIMP TOOL	RECOMMENDED HOLDING PLATE	PICTORIAL VIEW OF CRIMP INSERT TOOL
1	5.0	6.0	1-2823558-8	1-2823557-1	NOT APPLICABLE	
2	5.5	6.5	1-2823558-9			
3	6.0	7.0	2-2823558-0			
4	6.5	7.5	2-2823558-1			
5	7.0	8.0	1-2823558-1			
6	7.5	8.5	1-2823558-2			
7	8.0	9.0	1-2823558-3			
8	8.5	9.5	1-2823558-4			
9	9.0	10.0	1-2823558-5			
10	9.5	10.5	1-2823558-6			
11	10.0	11.0	1-2823558-7			
12	10.5	11.5	2-2823558-9	BENCH TOP PRESS	2379835-1	
13	11.0	12.0	3-2823558-0			
14	11.5	12.5	3-2823558-1			
15	12.0	13.0	3-2823558-3			
16	12.5	13.5	3-2823558-4			
17	13.0	14.0	3-2823558-5			
18	13.5	15.0	3-2823558-6			
19	14.0	15.0	3-2823558-7			
20	14.5	15.5	3-2823558-8			
21	16.0	17.0	3-2823558-9			



BARREL INNER DIAMETER	D
10.5	25.0
11.0	
11.5	
12.0	
12.5	
13.0	
13.5	
14.0	30.0
14.5	
16.0	
16.0	

NOTES:

1. RECOMMENDED CRIMP INSERTS MUST BE SELECTED ACCORDING TO THE CABLE DETAILS.

TECHNICAL INFORMATION FOR -29 TO -39.

OBSOLETE

TECHNICAL INFORMATION

THIS DRAWING IS A CONTROLLED DOCUMENT.		DWN 13OCT2020 GOPALAKRISHNA HV	TE Connectivity	
DIMENSIONS: mm		CHK 13OCT2020 S EGBERT		
TOLERANCES UNLESS OTHERWISE SPECIFIED:		APVD 13OCT2020 S EGBERT	NAME	
0 PLC ± -		PRODUCT SPEC	-	
1 PLC ± -		APPLICATION SPEC	-	
2 PLC ± -		SIZE	CAGE CODE	DRAWING NO
3 PLC ± -		WEIGHT	A3 00779	C-2823558
4 PLC ± -		CUSTOMER DRAWING	SCALE	SHEET
ANGLES ± -			NTS	1 OF 1
FINISH				REV A4