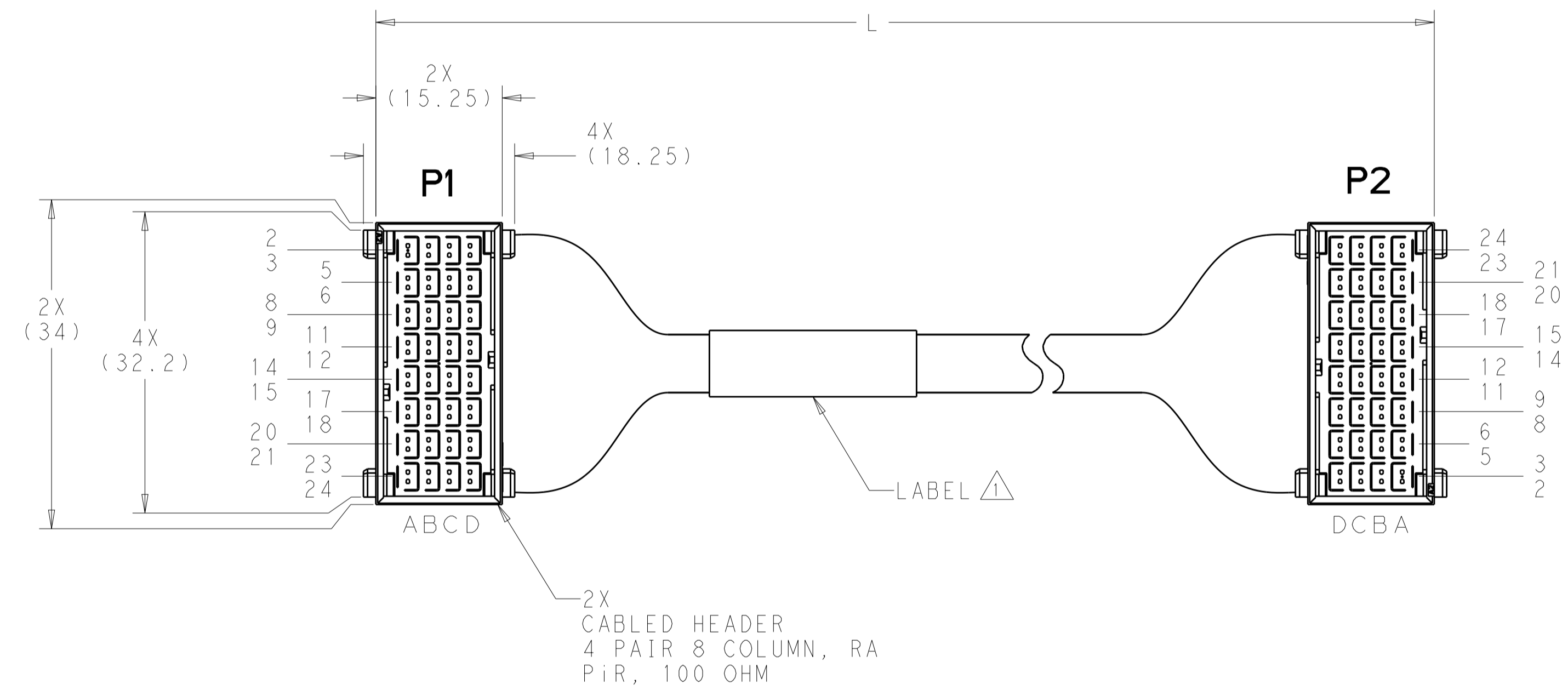
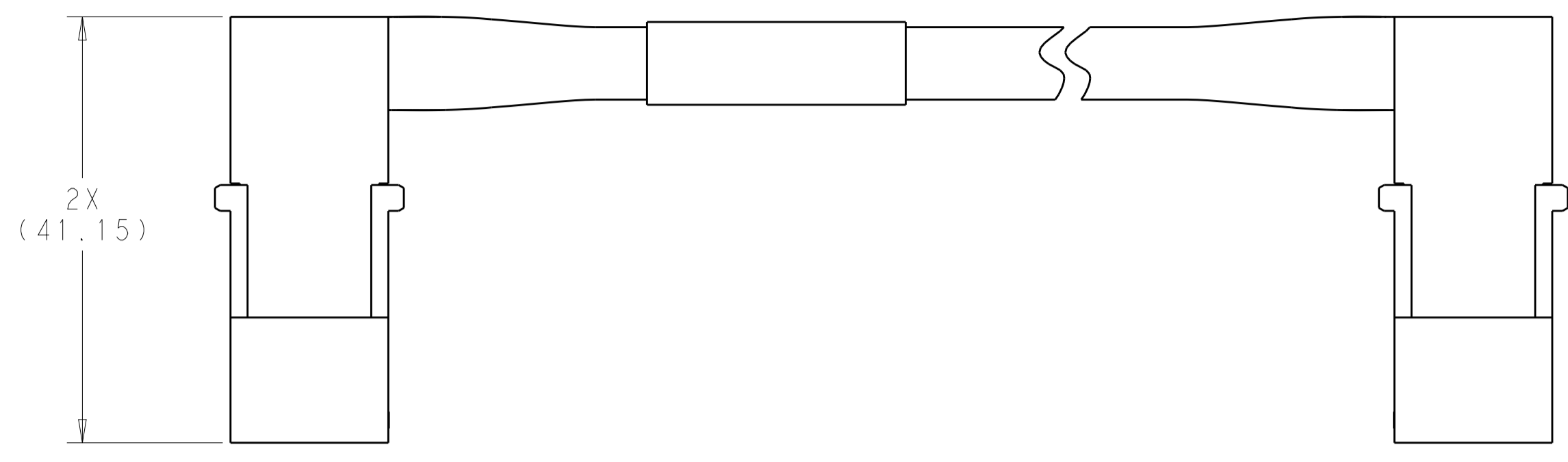
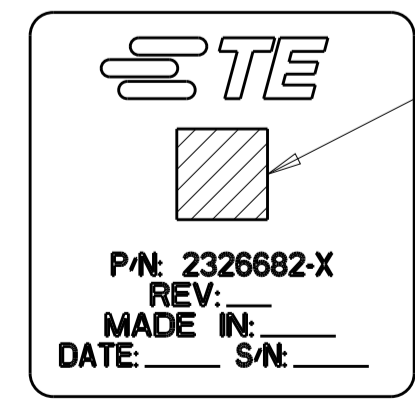


REVISIONS					
P.	LTR.	DESCRIPTION	DATE	DWN.	APVD.
A		RELEASED PER ECO-18-008497	31MAY2018	REH	KS
B		REVISED PER ECO-18-017964	26NOV2018	MK	MK



2X
 CABLED HEADER
 4 PAIR 8 COLUMN, RA
 PiR, 100 OHM

△ LABEL INFORMATION:



BARCODE INFO:
 2326682-dxxwyysss
 d=DASH NUMBER
 xx=MANUFACTURING SITE
 US=UNITED STATES, CN=CHINA, MX=MEXICO
 ww=WEEK
 yy=YEAR
 sss=SERIAL NUMBER 000 THRU 999

2. EACH CABLE ASSEMBLY TESTED FOR CONTINUITY, OPENS AND SHORTS.
3. SEE SHEET 2 FOR WIRING DIAGRAM.
4. EACH HIGH SPEED CABLET TESTED ON NETWORK ANALYZER, SERIALIZED, AND DATA SAVED.

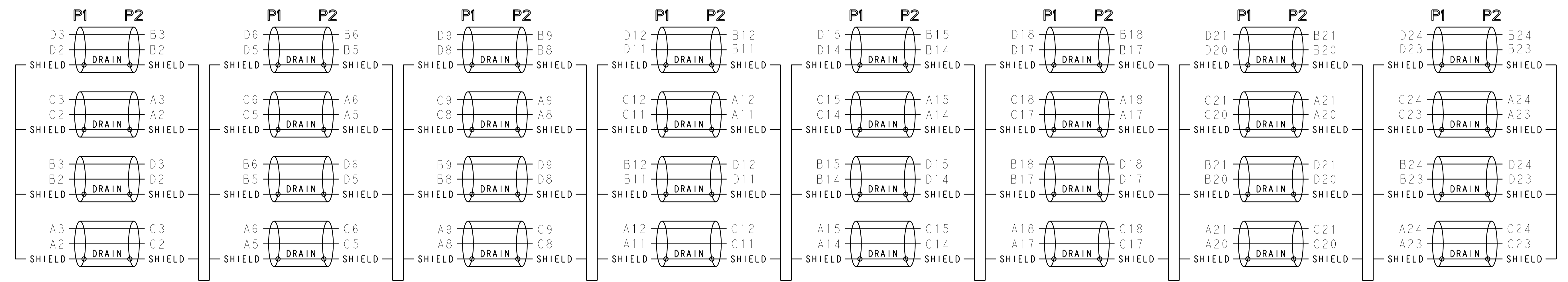
1450	6-2326682-6
950	5-2326682-6
600	4-2326682-2
500	3-2326682-8
450	3-2326682-6
400	3-2326682-1
300	2-2326682-1
L±3	PART NUMBER

THIS PRODUCT HAS NOT COMPLETED VALIDATION AND QUALIFICATION TESTING

THIS DRAWING IS A CONTROLLED DOCUMENT.		DWN: HAMNER 13OCT2017	TE Connectivity
DIMENSIONS: mm		CHK: C. BLACKBURN 16OCT2017	
TOLERANCES UNLESS OTHERWISE SPECIFIED:		APVD: C. BLACKBURN 16OCT2017	NAME: CABLE ASSEMBLY, 100 OHM, PiR, 4 PAIR, 8 COLUMN, RA, 20G, 2-2 WIRING, A-C
0 PLC ±		PRODUCT SPEC	
1 PLC ±		APPLICATION SPEC	SIZE: A1
2 PLC ±		WEIGHT	CAGE CODE: -
3 PLC ±		CUSTOMER DRAWING	DRAWING NO: C=2326682
4 PLC ±		SCALE: 2:1	SHEET 1 OF 2
ANGLES ±		REV: B	

REVISIONS				
P.	LTN.	DESCRIPTION	DATE	APVD.
-	-	SEE SHEET 1	-	-

WIRING DIAGRAM



THIS PRODUCT HAS NOT COMPLETED VALIDATION AND QUALIFICATION TESTING

THIS DRAWING IS A CONTROLLED DOCUMENT.		DWN: HAMNER 13OCT2017	
DIMENSIONS: mm		CHK: C. BLACKBURN 16OCT2017	
		APVD: C. BLACKBURN 16OCT2017	NAME: CABLE ASSEMBLY, 100 OHM, PiR, 4 PAIR, 8 COLUMN, RA, 20G, 2-2 WIRING, A-C
TOLERANCES UNLESS OTHERWISE SPECIFIED:		PRODUCT SPEC: -	RESTRICTED TO: -
0 PLC ± 1 PLC ± 2 PLC ± 3 PLC ± 4 PLC ± ANGLES ± FINISH ±		APPLICATION SPEC: -	SIZE: A1
MATERIAL: -		WEIGHT: -	CAGE CODE: -
CUSTOMER DRAWING		SCALE: 5:1	SHEET 2 OF 2 REV B