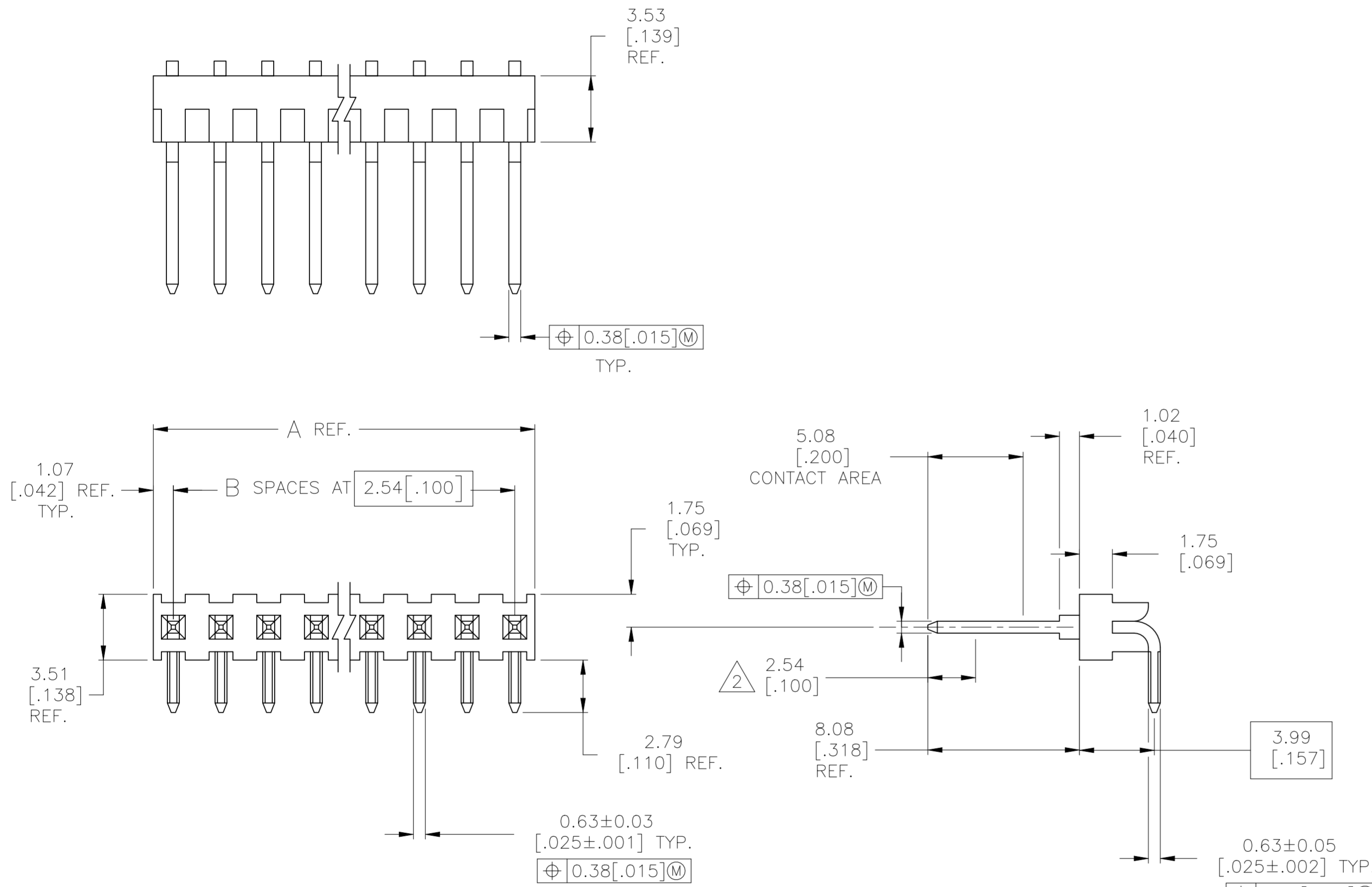


REVISIONS					
P	LTR	DESCRIPTION	DATE	DWN	APVD
A1		REVISED PER ECN-24-247111	05FEB2024	RK	CAS



FINISH	B	A	NO OF POSN	PART NUMBER	
7	4	39	101.19 [3.984]	40	4-2267063-0
6	4	38	98.65 [3.884]	39	3-2267063-9
6	4	37	96.11 [3.784]	38	3-2267063-8
6	4	36	93.57 [3.684]	37	3-2267063-7
6	4	35	91.03 [3.584]	36	3-2267063-6
6	4	34	88.49 [3.484]	35	3-2267063-5
6	4	33	85.95 [3.384]	34	3-2267063-4
6	4	32	83.41 [3.284]	33	3-2267063-3
6	4	31	80.87 [3.184]	32	3-2267063-2
6	4	30	78.33 [3.084]	31	3-2267063-1
6	4	29	75.79 [2.984]	30	3-2267063-0
6	4	28	73.25 [2.884]	29	2-2267063-9
6	4	27	70.71 [2.784]	28	2-2267063-8
6	4	26	68.17 [2.684]	27	2-2267063-7
6	4	25	65.63 [2.584]	26	2-2267063-6
6	4	24	63.09 [2.484]	25	2-2267063-5
6	4	23	60.55 [2.384]	24	2-2267063-4
6	4	22	58.01 [2.284]	23	2-2267063-3
6	4	21	55.47 [2.184]	22	2-2267063-2
6	4	20	52.93 [2.084]	21	2-2267063-1
7	4	19	50.39 [1.984]	20	2-2267063-0
6	4	18	47.85 [1.884]	19	1-2267063-9
7	4	17	45.31 [1.784]	18	1-2267063-8
6	4	16	42.77 [1.684]	17	1-2267063-7
6	4	15	40.23 [1.584]	16	1-2267063-6
6	4	14	37.69 [1.484]	15	1-2267063-5
6	4	13	35.15 [1.384]	14	1-2267063-4
6	4	12	32.61 [1.284]	13	1-2267063-3
7	4	11	30.07 [1.184]	12	1-2267063-2
7	4	10	27.53 [1.084]	11	1-2267063-1
7	4	9	24.99 [.984]	10	1-2267063-0
7	4	8	22.45 [.884]	9	2267063-9
7	4	7	19.91 [.784]	8	2267063-8
7	4	6	17.37 [.684]	7	2267063-7
7	4	5	14.83 [.584]	6	2267063-6
7	4	4	12.29 [.484]	5	2267063-5
7	4	3	9.75 [.384]	4	2267063-4
7	4	2	7.21 [.284]	3	2267063-3
7	4	1	4.67 [.184]	2	2267063-2
7	4	0	2.13 [.084]	1	2267063-1

- 1 RECOMMENDED MOUNTING HOLE:  $\phi 0.89 \pm 0.08 [0.35 \pm .003]$ .
- 2 POINT OF MEASUREMENT FOR PLATING THICKNESS.
- 3 HOUSING: GLASS FILLED NYLON. COLOR - BLACK. POSTS: PHOS. BRONZE
- 4 0.00076[.000030] GOLD IN CONTACT AREA, MATTE TIN REMAINDER OF POSTS, ALL OVER 0.00127[.000050] NICKEL.
- 5 0.00007[.000003] GOLD OVER 0.00068[.000027] Pd/Ni IN CONTACT AREA, MATTE TIN REMAINDER OF POSTS, ALL OVER 0.00127[.000050] NICKEL.
- 6 PRELIMINARY PART NUMBER NOT RELEASED FOR PRODUCTION.
- 7 OBSOLETE

THIS DRAWING IS A CONTROLLED DOCUMENT.

DWN	03FEB2014	NAGALAKSHMI K
CHK	03FEB2014	MILLER MICHAEL
APVD	03FEB2014	MILLER MICHAEL
PRODUCT SPEC		
APPLICATION SPEC		
WEIGHT	-	

TE Connectivity Ltd.

HEADER ASSEMBLY, MOD II,  
2.54[.100] CL, RA,  
0.64[.025] SQUARE POST, SINGLE ROW

SIZE: A2 CAGE CODE: 00779 DRAWING NO: C-2267063 RESTRICTED TO: -


CUSTOMER DRAWING SCALE: 5:1 SHEET: 1 of 2 REV: A1

REVISIONS

P	LTR	DESCRIPTION	DATE	DWN	APVD
-	-	SEE SHEET 1	-	-	-

7	5	39	101.19 [3.984]	40	9-2267063-0
6	5	38	98.65 [3.884]	39	8-2267063-9
6	5	37	96.11 [3.784]	38	8-2267063-8
6	5	36	93.57 [3.684]	37	8-2267063-7
6	5	35	91.03 [3.584]	36	8-2267063-6
6	5	34	88.49 [3.484]	35	8-2267063-5
6	5	33	85.95 [3.384]	34	8-2267063-4
6	5	32	83.41 [3.284]	33	8-2267063-3
6	5	31	80.87 [3.184]	32	8-2267063-2
6	5	30	78.33 [3.084]	31	8-2267063-1
6	5	29	75.79 [2.984]	30	8-2267063-0
6	5	28	73.25 [2.884]	29	7-2267063-9
6	5	27	70.71 [2.784]	28	7-2267063-8
6	5	26	68.17 [2.684]	27	7-2267063-7
6	5	25	65.63 [2.584]	26	7-2267063-6
6	5	24	63.09 [2.484]	25	7-2267063-5
6	5	23	60.55 [2.384]	24	7-2267063-4
6	5	22	58.01 [2.284]	23	7-2267063-3
6	5	21	55.47 [2.184]	22	7-2267063-2
6	5	20	52.93 [2.084]	21	7-2267063-1
7	5	19	50.39 [1.984]	20	7-2267063-0
6	5	18	47.85 [1.884]	19	6-2267063-9
7	5	17	45.31 [1.784]	18	6-2267063-8
6	5	16	42.77 [1.684]	17	6-2267063-7
6	5	15	40.23 [1.584]	16	6-2267063-6
6	5	14	37.69 [1.484]	15	6-2267063-5
6	5	13	35.15 [1.384]	14	6-2267063-4
6	5	12	32.61 [1.284]	13	6-2267063-3
7	5	11	30.07 [1.184]	12	6-2267063-2
7	5	10	27.53 [1.084]	11	6-2267063-1
7	5	9	24.99 [.984]	10	6-2267063-0
7	5	8	22.45 [.884]	9	5-2267063-9
7	5	7	19.91 [.784]	8	5-2267063-8
7	5	6	17.37 [.684]	7	5-2267063-7
7	5	5	14.83 [.584]	6	5-2267063-6
7	5	4	12.29 [.484]	5	5-2267063-5
7	5	3	9.75 [.384]	4	5-2267063-4
7	5	2	7.21 [.284]	3	5-2267063-3
7	5	1	4.67 [.184]	2	5-2267063-2
7	5	0	2.13 [.084]	1	5-2267063-1

FINISH B A NO OF POSN PART NUMBER

THIS DRAWING IS A CONTROLLED DOCUMENT.		DWN 03FEB2014 NAGALAKSHMI K	 TE Connectivity Ltd.	
DIMENSIONS: mm [INCHES]		CHK 03FEB2014 MILLER MICHAEL		
TOLERANCES UNLESS OTHERWISE SPECIFIED:		APVD 03FEB2014 MILLER MICHAEL	NAME	
0 PLC ± -		PRODUCT SPEC	HEADER ASSEMBLY, MOD II, 2.54[.100] CL, RIGHT ANGLE, 0.64[.025] SQUARE POST, SINGLE ROW	
1 PLC ± -		APPLICATION SPEC	SIZE CAGE CODE DRAWING NO RESTRICTED TO	
2 PLC ± 0.13[.005]		WEIGHT -	A2 00779 C=2267063 -	
3 PLC ± -		MATERIAL FINISH	SCALE 5:1 SHEET 2 OF 2 REV A1	
4 PLC ± -		CUSTOMER DRAWING		
ANGLES ± -				