

ATLANTIC VERSION TERMINATOR INTERFACE ADAPTER	PART NUMBER	REVISION	DESCRIPTION	FEED TYPE	APPLICATOR STYLE CONVERSION CHART						
					CONVERT TO	PART NUMBERS REQUIRED					
	2266984-2	A	FINE CRIMP HEIGHT ADJUST	PNEUMATIC	-	-	-	-	-	-	
	2266984-5	A	FINE CRIMP HEIGHT ADJUST	SERVO LATCH PLATE	2119951-1	-	8-2266984-5	1901094-3	-	2168400-6 (QUANTITY 2)	
	2266984-6	A	NON-CRIMP HEIGHT ADJUST	SERVO LATCH PLATE	2161326-1	-	8-2266984-4	-	-	-	
	2266984-7	A	FINE CRIMP HEIGHT ADJUST	NONE	-	-	-	-	-	-	
	7-2266984-7	A	CRIMP TOOLING KIT	-	-	-	-	-	-	-	

APPLICATOR DATA		
CRIMP WIRE	SIZE	TYPE
INSUL	6.71 mm [.264]	F
APPLICATOR INSTRUCTIONS 408-10389		

TERMINAL DATA: KET TERMINAL		KET CRIMP SPECIFICATION	
TERMINAL NAME: TERMINAL, EARTH RING			
WIRE STRIP LENGTH		INSULATION DIAMETER RANGE	
6.30-7.06 mm [.248-.278 IN]		Ø3.70-5.60 mm [.146-.220 IN]	
TERMINAL APPLICATION SPECIFICATION	KET		
TERMINALS APPLIED			
TE TERMINAL	KET TERMINAL	TE TERMINAL	KET TERMINAL
2113847-1	ST710967-1	2113847-2	ST710967-3

WIRE SIZE	CRIMP HEIGHT mm [INCH]	CRIMP HEIGHT REFERENCE SETTING
AVS 8mm ²	3.00+/-0.05 [.118+/- .002]	6.2
FLRY-B 6mm ²	2.85+/-0.05 [.112+/- .002]	8.0
AVS 5mm ²	2.75+/-0.05 [.108+/- .002]	9.6
FLRY-B 4mm ²	2.65+/-0.05 [.104+/- .002]	10.1

- 1 RECOMMENDED SPARE PARTS
- 2 GREASE BEARING SURFACES LIGHTLY
- 3 LUBRICATE DAILY PER THE APPLICATOR INSTRUCTION SHEET SUPPLIED WITH THE APPLICATOR.
- 4 APPLICATOR SPECIFIC DATA TO BE ENTERED INTO BLANK MEMORY CHIP AT ASSEMBLY. SEE BELOW FOR PART NUMBER:
 PNEUMATIC FEED WITH "SMART APPLICATOR" CONVERSION: 8-2266984-4
 SERVO FEED WITH "FINE CRIMP HEIGHT ADJUST": 8-2266984-5
 SERVO FEED WITH "NON-CRIMP HEIGHT ADJUST": 8-2266984-6
- 5 ADJUSTMENT OF THE STRIPPER MAY BE REQUIRED WHEN MOVING THE APPLICATOR BETWEEN BENCH AND LEADMAKER APPLICATIONS.
- 6 APPLY PART NUMBER 1-23419-5 LOCTITE TO THREADS OF ITEM 62. APPLY PART NUMBER 2-23419-6 LOCTITE TO THREADS OF ITEM 242. FOR -6 ONLY APPLY PART NUMBER 1-23419-5 LOCTITE TO THREADS OF ITEM 37.
- 7 GREASE THREADS, GROOVE AND O-RING ON ITEMS 35 & 252.
- 8 MAGNET, ITEM 166 MUST BE ORIENTED CORRECTLY IN ORDER TO PROPERLY ACTUATE THE COUNTER.
- 9 CRIMP HEIGHT REFERENCE SETTING WAS THE SETTING USED WHEN THE APPLICATOR WAS QUALIFIED AT THE FACTORY. ADJUSTMENT MAY BE NECESSARY WHEN RUNNING APPLICATOR IN THE FIELD.
- 10 TERMINAL PITCH NOT COMPATIBLE WITH MECHANICAL FEED.
- 11 TO CONVERT THE APPLICATOR TO A NON-CARRIER CUTTING STYLE, REMOVE ITEM 13 AND ATTACH TO THE LOCATION ON THE BACK SIDE OF THE HOUSING. REFER TO INSTRUCTION SHEET FOR ADDITIONAL INFORMATION.
- 12 WHEN ASSEMBLING A NON CRIMP HEIGHT ADJUST APPLICATOR (-6) USE SHIMS FROM ITEM 260 TO ACHIEVE A NOMINAL SHIM HEIGHT OF 2.8.
- 13 TERMINAL LUBRICANT IS RECOMMENDED.

***WARNING**
 ON INSTALLATION, SET WIRE DISC, ITEM 40 TO LARGEST WIRE SIZE SETTING. USE OF SETTINGS BELOW MINIMUM REQUIRED CRIMP HEIGHT SETTING WILL CAUSE DAMAGE TO CRIMP TOOLING.

- 2	2	2	2	2	2168083-1	SCR, SKT HD CAP, RoHS, M3 X 8.0	269
- 1	1	1	1	1	1-1633782-2	FENCE	267
-	-	1	-	-	2119957-2	APPLICATOR SHIM PACK	260
-	1	1	1	1	1803078-5	SPACER, PRECISION	259
-77	-7	-6	-5	-2	PART NO	DESCRIPTION	ITEM NO

ATLANTIC VERSION
 Shown on sheets 1 of 4 & 2 of 4
 (Pacific version shown on sheets 3 of 4 & 4 of 4)

SET UP GAUGE	LOC	DIST	REVISIONS				
2119599-1	A	66	P LTR	DESCRIPTION	DATE	OWN	APVD
			A	RELEASE	18NOV2015	XZ	TE

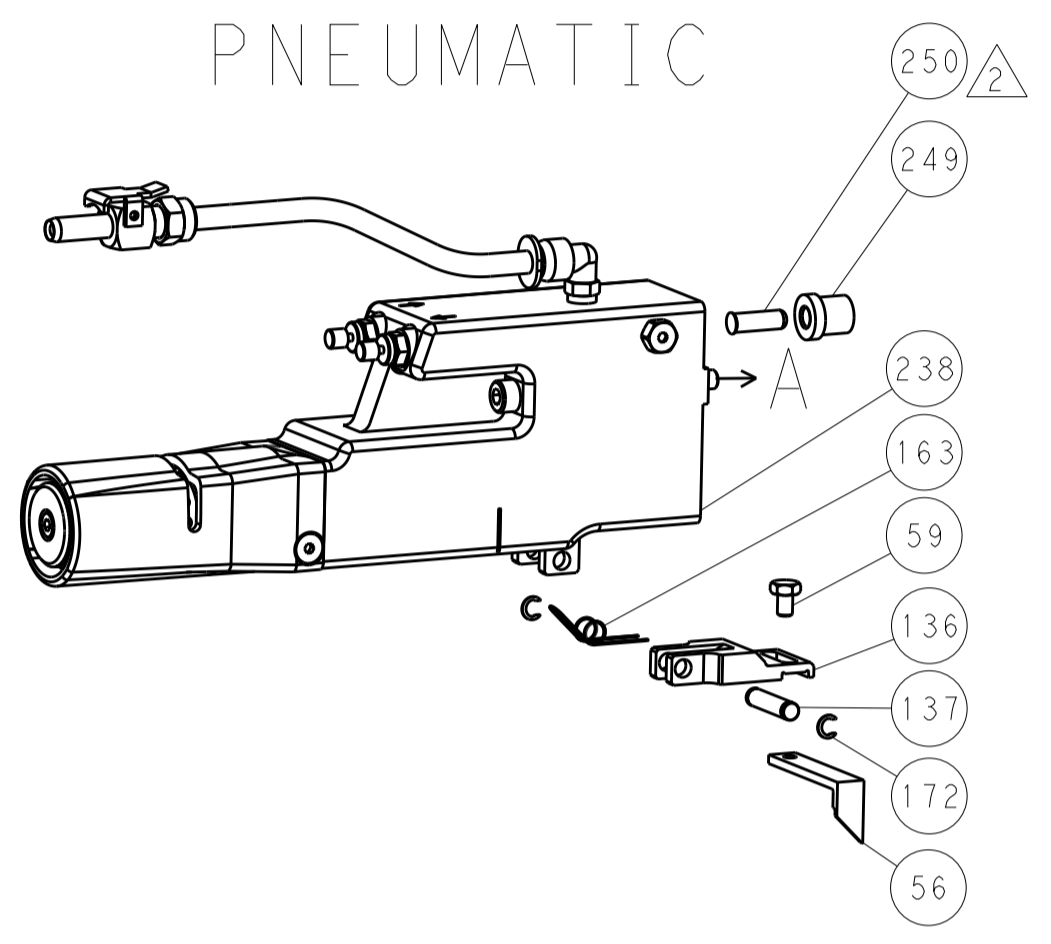
- 1	- 1	1	1	8-21084-0	O-RING, .676 ID, .070 DIA. MAT.	252	
- -	- -	- 1	1	2119640-1	PUSH ROD, AIR FEED	250	
- -	- -	- 1	1	2079988-1	BUSHING, LCH5-12, MISUMI	249	
- -	- -	- 1	1	2119641-1	FEED CAM, AIR FEED	248	
- 1	- 1	1	1	2119798-1	DETENT PIN	247	
- 1	- 1	1	1	1-22279-3	SPRING, COMPRESSION	246	
- -	- 1	-	-	2161314-1	RAM, STEPPED, ATLANTIC, SF, NON-ADJ	245	
- 1	1	1	1	2119082-7	CAM, SNAIL, INSULATION ADJUSTMENT	244	
- 1	1	1	1	2079764-1	WASHER, WAVE SPRING, CREST-TO-CREST	243	
- 1	1	1	1	2119083-1	RETAINER, INSULATION DIAL	242	
- 1	1	1	1	7-18023-7	SCR, SKT HD CAP M3 X 4.0	241	
- -	- 2	2	-	2168400-6	SHCS, LOW HEAD, RoHS, M5 X 16	240	
- -	- -	- 1	-	2063440-1	AIR FEED MODULE	238	
- -	- 1	1	-	2119740-2	TAG, IDENTIFICATION	213	
- -	- 1	1	-	1901094-3	SPACER, FEEDER	198	
- -	- -	- 2	-	21045-3	RING, RETAIN, EXTERN, 3/16 CRESCENT	172	
- 1	1	1	1	994969-1	MAGNET, RARE EARTH HIGH ENERGY	166	
- REF	REF	REF	REF	994970-2	COUNTER, MAGNETIC	164	
- -	- -	- 1	-	240638-1	SPRING, FEED FINGER	163	
- -	- -	- 1	-	3-23627-7	PIN, RETAIN, GRVD, 3/16 X .854	137	
- -	- -	- 1	-	2119799-1	HOLDER, FEED FINGER, AF	136	
- -	- REF	REF	-	SEE NOTE 4	MEMORY CHIP, PROGRAMMED	135	
- -	- 1	1	-	1633743-1	SERVO FEED LATCH ASM	133	
- -	- REF	REF	-	2119944-1	FEED FINGER ASSEMBLY, SF	117	
- 1	1	1	1	2119955-1	ASSY, LUBRICATOR, SIDE FEED	113	
- 1	1	1	1	1-455888-3	SPACER, CRIMPER	82	
- 2	2	2	2	2079383-4	SCR, BHSC, RoHS (M4 X 8)	79	
- 1	1	1	1	1803096-1	EXTENSION PLATE	78	
- 1	1	1	1	2119956-1	DOCUMENTATION PACKAGE	71	
- 1	-	-	-	2119740-1	TAG, IDENTIFICATION	67	
- 2	2	2	2	2168078-1	SCREW, DRIVE, RH, RoHS, 2 x .188	66	
- 1	-	-	-	2119793-1	LIMITER, ADJUSTMENT BOLT	63	
- 3	-	-	-	992763-5	SCR, SET, SOC, CONE POINT, M3 X 4.0	62	
- 1	1	1	1	2079383-4	SCR, BHSC, RoHS (M4 X 8)	60	
- -	- -	- 1	-	5-18022-5	SCR, HEX HD CAP, M4 X 6.0	59	
- -	- -	- 1	-	1338683-8	FEED PAWL	56	
- 4	4	4	4	2168400-1	SHCS, LOW HEAD, RoHS, M4 X 12	54	
- 2	2	2	2	1-2168083-0	SCR, SKT HD CAP, RoHS, M4 X 10	53	
- 1	1	1	1	5018030-1	NUT, HEX, REG, RoHS, M3	52	
- 1	1	1	1	811242-5	BUMPER, HOLD DOWN	51	
- 1	1	1	1	690753-2	SPACER, TONKER	50	
- -	- -	- 1	-	18023-9	SCR, SKT HD CAP M4 X 6.0	49	
- 1	1	1	1	2119656-9	APPLICATOR BASIC ASSEMBLY, SF	46	
- 1	-	-	-	2161311-1	RAM, STEPPED, AMP STYLE, SIDE FEED	44	
- 1	1	1	1	1-2079383-5	SCR, BHSC, RoHS (M8 X 40)	41	
- 1	-	-	-	2119645-1	DISC, NUMBERED FA WIRE ADJUSTMENT	40	
- 1	-	-	-	2119957-1	APPLICATOR SHIM PACK	39	
- 1	1	1	1	2119644-3	RAM WASHER, PRECISION	38	
- 1	1	1	1	2119085-1	FA HEAD, ATLANTIC STYLE	37	
- 1	-	-	-	2119092-1	BOLT, ADJUSTMENT	35	
- 1	1	1	1	2-1752356-0	SUPPORT, TERMINAL	34	
- 2	2	2	2	2079383-5	SCR, BHSC, RoHS (M4 X 20)	33	
- 1	1	1	1	2161328-1	HEX HEAD, FLANGED, M5 X 8mm LONG	32	
- 1	1	1	1	1320908-3	SPACER, STRIP GUIDE	30	
- 1	1	1	1	2119959-9	ASSEMBLY, STRIP GUIDE	29	
- 1	1	1	1	455888-3	SPACER, CRIMPER	28	
- 1	1	1	1	1320928-4	STRIP GUIDE	24	
- 1	1	1	1	2168083-2	SCR, SKT HD CAP, RoHS, M4 X 8.0	21	
- 2	2	2	2	1-18028-2	WASHER, FLAT, REG M4	20	
- 1	1	1	1	2119533-1	STRIPPER, SIDE FEED	19	
- 1	1	1	1	2119806-1	INSERT, SHEAR	13	
- 1	1	1	1	4-22280-7	SPRING, COMPRESSION	12	
- 1	1	1	1	1-356885-4	STOP, SHEAR	11	
- 1	1	1	1	2119805-1	SHEAR HOLDER, FRONT	10	
- 1	1	1	1	454276-5	FLOATING SHEAR, FRONT	9	
1	1	1	1	2-1333229-5	ANVIL, COMBINATION	8	
- -	- -	- -	- -	-	-	7	
- -	- -	- -	- -	-	-	6	
- 1	1	1	1	1-2119757-0	DEPRESSOR, SHEAR	5	
- 1	1	1	1	1-238011-4	BLOCK, CRIMPER SPACER	4	
1	1	1	1	1803228-6	CRIMPER, INSULATION F PREMIUM	3	
- 1	1	1	1	455888-8	SPACER, CRIMPER	2	
1	1	1	1	1-1803241-3	CRIMPER, WIRE F	1	
-77	-7	-6	-5	-2	PART NO	DESCRIPTION	ITEM NO

DIMENSIONS:		TOLERANCES UNLESS OTHERWISE SPECIFIED:		DWG		CHK		APVD		NAME	
mm	0 PLC	±		X. ZHAO	29SEP2015	L. ZHANG	29SEP2015	U. GUO	29SEP2015	Ocean Side Feed Applicator	
	1 PLC	±								Customer Accessible Production Drawing	
	2 PLC	±								SCALE 1:2 SHEET 1 OF 4 REV A	
	3 PLC	±								RESTRICTED TO	
	4 PLC	±								SIZE CAGE CODE DRAWING NO	
	ANGLES	±								A1 00779 ©=2266984	
MATERIAL	FINISH	±								WEIGHT	

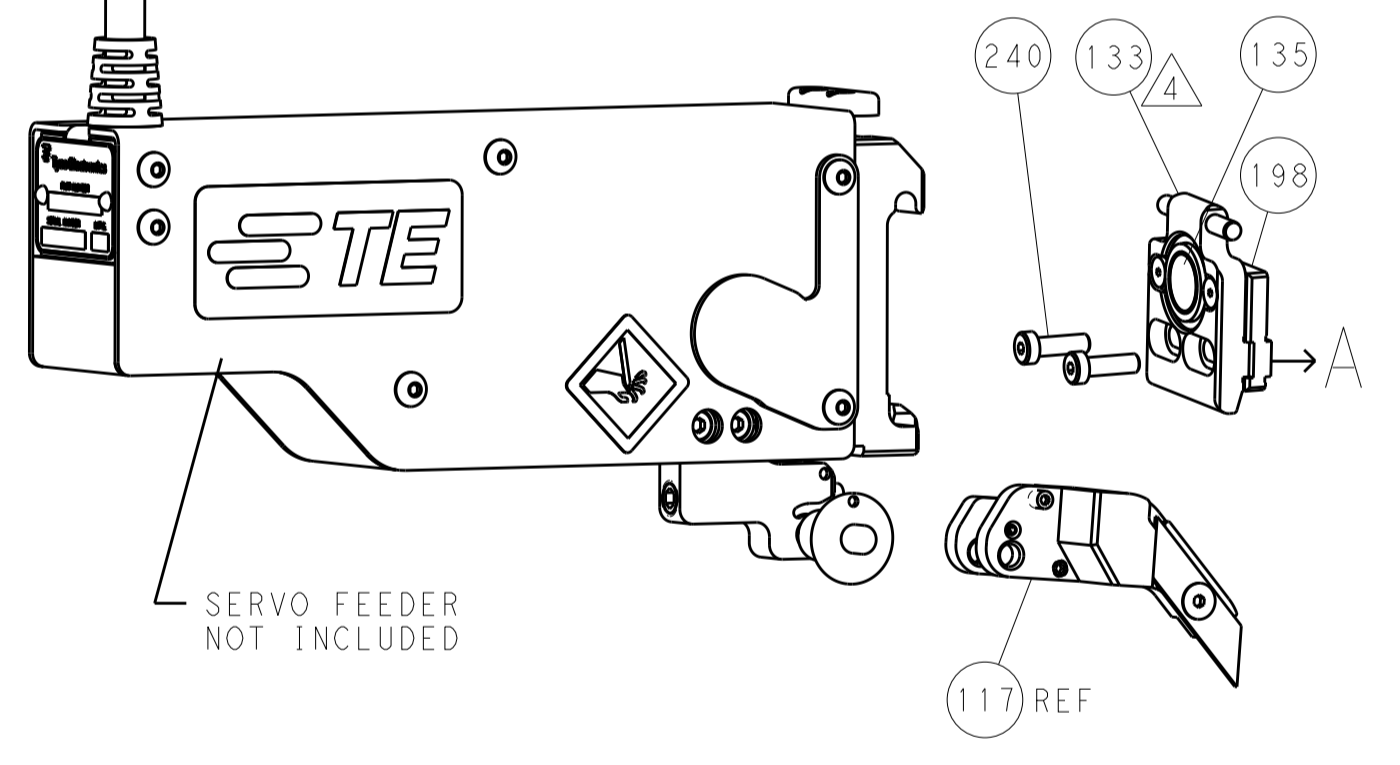
LOC		DIST		REVISIONS			
A	66	P	LTM	DESCRIPTION	DATE	DWN	APVD
		-		SEE SHEET 1			

FEED TYPE

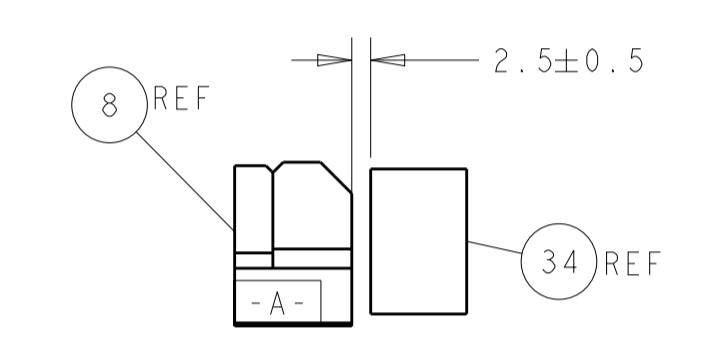
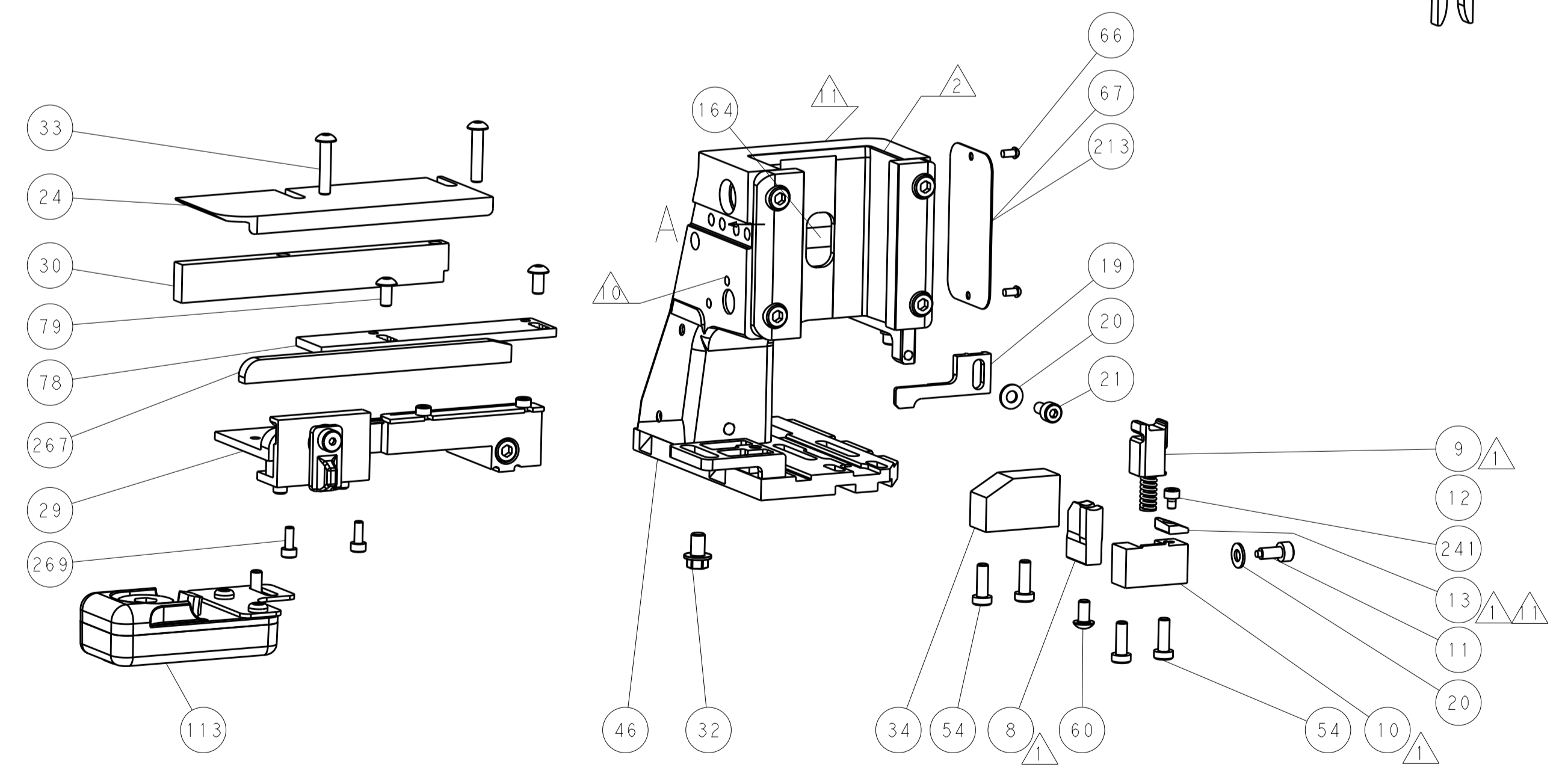
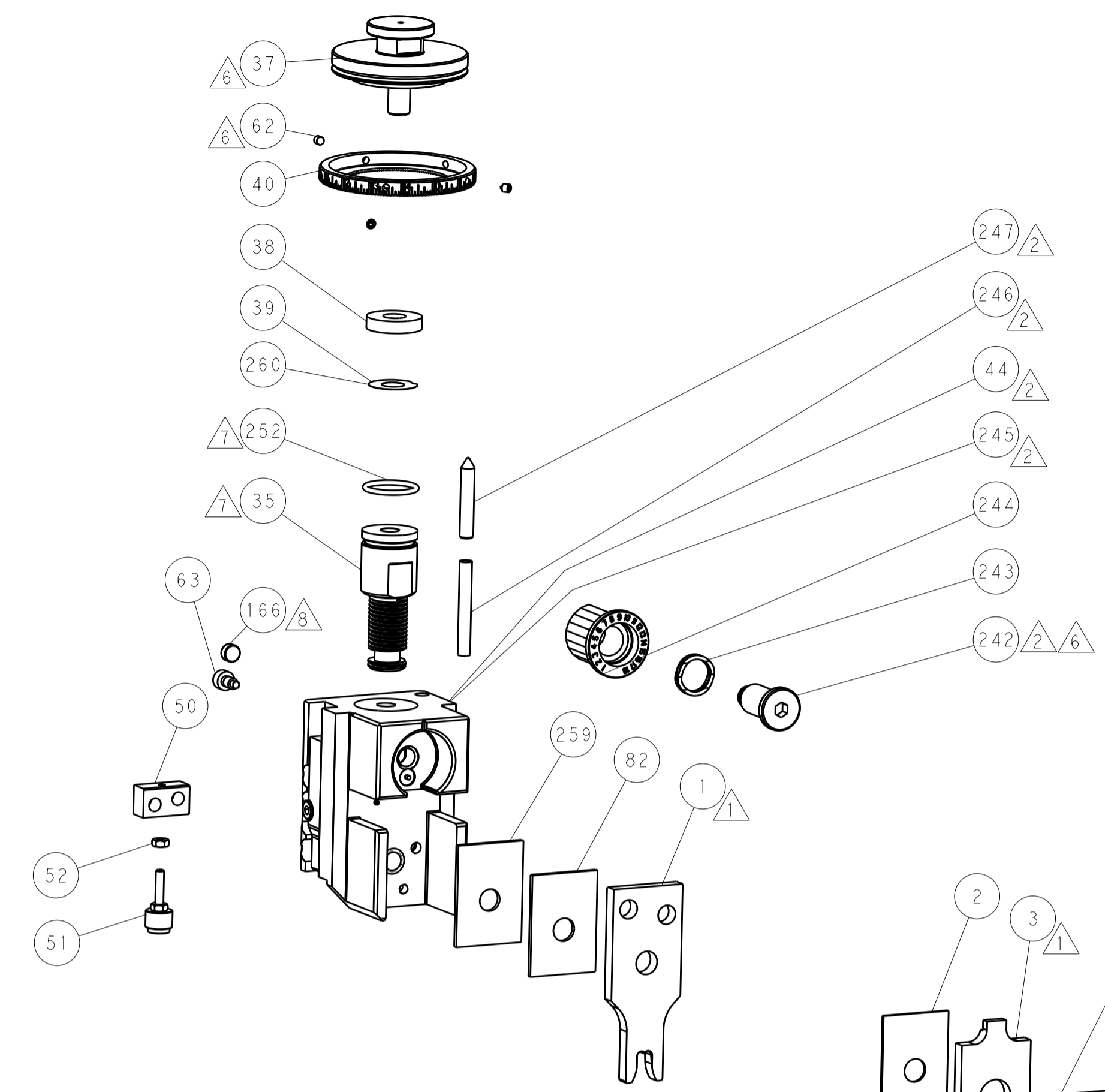
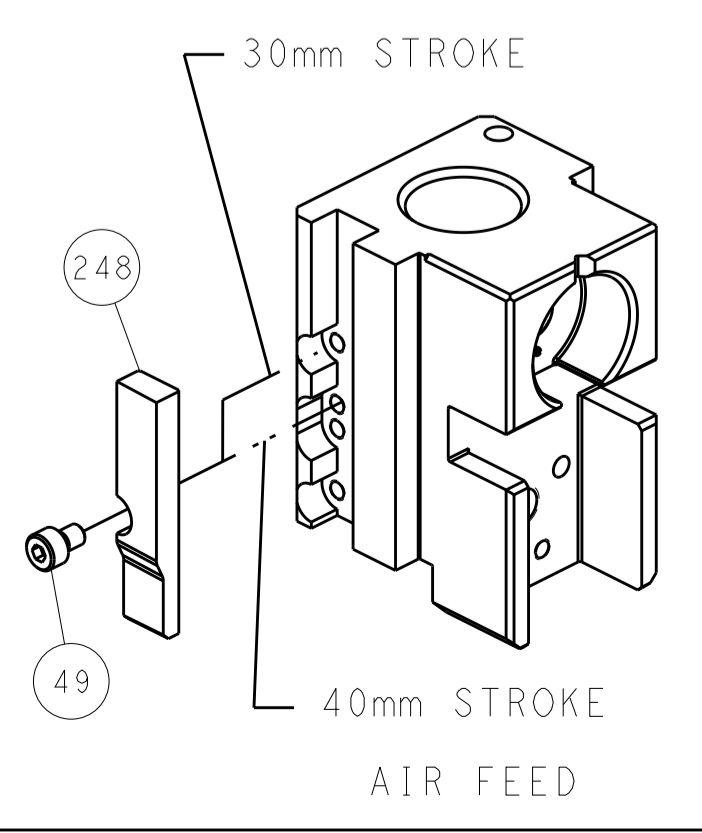
PNEUMATIC



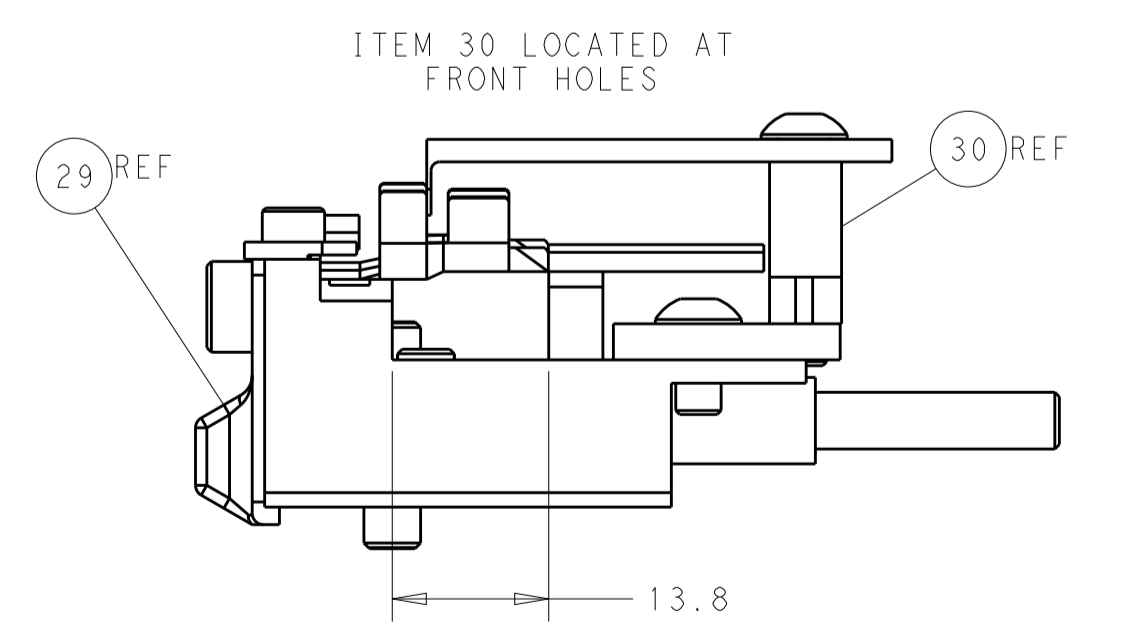
SERVO LATCH PLATE



CAM POSITION



TERMINAL SUPPORT LOCATION



FEED TRACK POSITION GUIDE BY INSULATION BARREL

ATLANTIC VERSION
 Shown on sheets 1 of 4 & 2 of 4
 (Pacific version shown on sheets 3 of 4 & 4 of 4)

DIMENSIONS:		TOLERANCES UNLESS OTHERWISE SPECIFIED:		DWN X.ZHAO 29SEP2015		TE Connectivity	
mm	0 PLC ±	1 PLC ±	2 PLC ±	3 PLC ±	4 PLC ±	5 PLC ±	Harrisburg, PA 17105-3608
	ANGLES	FINISH		CHK L.ZHANG 29SEP2015		NAME	
				APVD H.GUO 29SEP2015		Ocean Side Feed Applicator	
MATERIAL				PRODUCT SPEC		RESTRICTED TO	
				APPLICATION SPEC		SIZE CAGE CODE DRAWING NO	
				WEIGHT		A1 00779 C=2266984	
Customer Accessible Production Drawing				SCALE 1:2		SHEET 2 OF 4 REV A	

PACIFIC VERSION TERMINATOR INTERFACE ADAPTER	PART NUMBER	REVISION	DESCRIPTION	FEED TYPE	APPLICATOR STYLE CONVERSION CHART						
					CONVERT TO	PART NUMBERS REQUIRED					
	2-2266984-2	A	FINE CRIMP HEIGHT ADJUST	PNEUMATIC	-	-	-	-	-	-	
					SERVO LATCH PLATE	2119951-1	-	8-2266984-5	1901094-3	-	2168400-6 (QUANTITY 2)
					SMART APPLICATOR	2161326-1	-	8-2266984-4	-	-	-
	2-2266984-5	A	FINE CRIMP HEIGHT ADJUST	SERVO LATCH PLATE ⁴	-	-	-	-	-	-	
2-2266984-7	A	FINE CRIMP HEIGHT ADJUST	NONE	-	-	-	-	-	-	-	
7-2266984-7	A	CRIMP TOOLING KIT	-	-	-	-	-	-	-	-	

APPLICATOR DATA		
CRIMP	SIZE	TYPE
WIRE	5.74 mm [.226]	F
INSUL	6.71 mm [.264]	F
APPLICATOR INSTRUCTIONS 408-10389		

TERMINAL DATA: KET TERMINAL KET CRIMP SPECIFICATION	
TERMINAL NAME: TERMINAL, EARTH RING	
WIRE STRIP LENGTH 6.30-7.06 mm [1.248-.278 IN]	INSULATION DIAMETER RANGE Ø3.70-5.60 mm [1.146-.220 IN]
TERMINAL APPLICATION SPECIFICATION KET	-
TERMINALS APPLIED	
TE TERMINAL 2113847-1	KET TERMINAL ST710967-1
TE TERMINAL 2113847-2	KET TERMINAL ST710967-3

WIRE SIZE	CRIMP HEIGHT mm [INCH]	CRIMP HEIGHT REFERENCE SETTING
AVS 8mm ²	3.00 +/- 0.05 [1.18 +/- .002]	6.2
FLRY-B 6mm ²	2.85 +/- 0.05 [1.12 +/- .002]	8.0
AVS 5mm ²	2.75 +/- 0.05 [1.08 +/- .002]	9.6
FLRY-B 4mm ²	2.65 +/- 0.05 [1.04 +/- .002]	10.1

- RECOMMENDED SPARE PARTS
- GREASE BEARING SURFACES LIGHTLY
- 3. LUBRICATE DAILY PER THE APPLICATOR INSTRUCTION SHEET SUPPLIED WITH THE APPLICATOR.
- APPLICATOR SPECIFIC DATA TO BE ENTERED INTO BLANK MEMORY CHIP AT ASSEMBLY. SEE BELOW FOR PART NUMBER:
PNEUMATIC FEED WITH "SMART APPLICATOR" CONVERSION: 8-2266984-4
SERVO FEED WITH "FINE CRIMP HEIGHT ADJUST": 8-2266984-5
- 5. ADJUSTMENT OF THE STRIPPER MAY BE REQUIRED WHEN MOVING THE APPLICATOR BETWEEN BENCH AND LEADMAKER APPLICATIONS.
- APPLY PART NUMBER 1-23419-5 LOCTITE TO THREADS OF ITEM 62.
APPLY PART NUMBER 2-23419-6 LOCTITE TO THREADS OF ITEM 242.
- GREASE THREADS, GROOVE AND O-RING ON ITEMS 139 & 152.
- MAGNET MUST BE ORIENTED CORRECTLY IN ORDER TO PROPERLY ACTUATE THE COUNTER.
- CRIMP HEIGHT REFERENCE SETTING WAS THE SETTING USED WHEN THE APPLICATOR WAS QUALIFIED AT THE FACTORY. ADJUSTMENT MAY BE NECESSARY WHEN RUNNING APPLICATOR IN THE FIELD.
- TERMINAL PITCH NOT COMPATIBLE WITH MECHANICAL FEED.
- TO CONVERT THE APPLICATOR TO A NON-CARRIER CUTTING STYLE, REMOVE ITEM 13 AND ATTACH TO THE LOCATION ON BACK SIDE OF THE HOUSING. REFER TO INSTRUCTION SHEET FOR ADDITIONAL INFORMATION.
- TERMINAL LUBRICANT IS RECOMMENDED.

***WARNING**
 ON INSTALLATION, SET WIRE DISC, ITEM 40 TO LARGEST WIRE SIZE SETTING. USE OF SETTINGS BELOW MINIMUM REQUIRED CRIMP HEIGHT SETTING WILL CAUSE DAMAGE TO CRIMP TOOLING.

-	2	2	2	2168083-1	SCR, SKT HD CAP, RoHS, M3 X 8.0	269
-	1	1	1	1-1633782-2	FENCE	267
-77	-27	-25	-22	PART NO	DESCRIPTION	ITEM NO

PACIFIC VERSION
 Shown on sheets 3 of 4 & 4 of 4
 (Atlantic version shown on sheets 1 of 4 & 2 of 4)

SET UP GAUGE	LOC	DIST	REVISIONS					
2119599-1	A	66	P	LTN	DESCRIPTION	DATE	OWN	APVD
			-	-	SEE SHEET 1	-	-	-

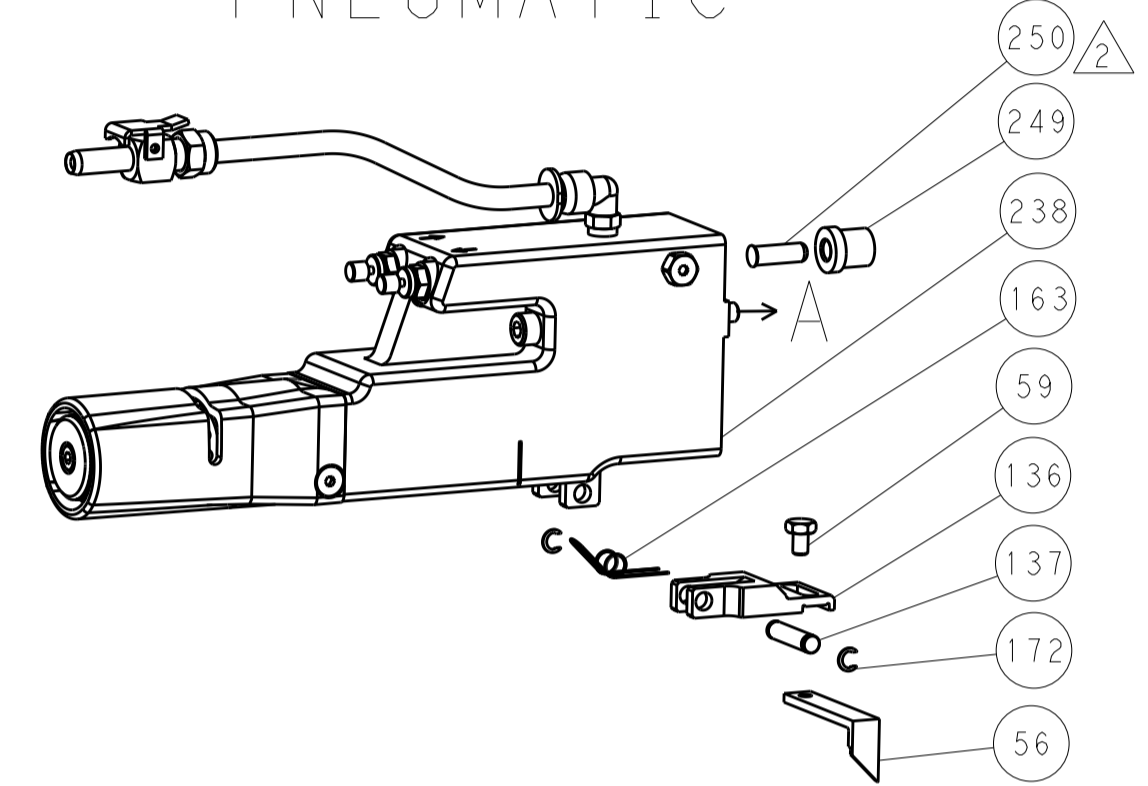
-	1	1	1	1803078-5	SPACER, PRECISION	259
-	1	1	1	2119782-1	FINE ADJUST HEAD ASM, PACIFIC STYLE	251
-	-	-	1	2119640-1	PUSH ROD, AIR FEED	250
-	-	-	1	2079988-1	BUSHING, LCH5-12, MISUMI	249
-	1	1	1	1-22279-3	SPRING, COMPRESSION	246
-	1	1	1	2119082-7	CAM, SNAIL, INSULATION ADJUSTMENT	244
-	1	1	1	2079764-1	WASHER, WAVE SPRING, CREST-TO-CREST	243
-	1	1	1	2119083-1	RETAINER, INSULATION DIAL	242
-	1	1	1	7-18023-7	SCR, SKT HD CAP M3 X 4.0	241
-	-	2	-	2168400-6	SHCS, LOW HEAD, RoHS, M5 X 16	240
-	-	-	1	2063440-1	AIR FEED MODULE	238
-	-	1	-	2119740-2	TAG IDENTIFICATION	213
-	-	1	-	1901094-3	SPACER, FEEDER	198
-	-	-	2	21045-3	RING, RETAIN, EXTERN, 3/16 CRESCENT	172
-	1	1	1	994969-1	MAGNET, RARE EARTH HIGH ENERGY	166
-	REF	REF	REF	994970-2	COUNTER, MAGNETIC	164
-	-	-	1	240638-1	SPRING, FEED FINGER	163
-	1	1	1	8-21084-1	O-RING, .801 ID, .070 DIA, MAT.	152
-	-	-	1	2119641-2	FEED CAM, AIR FEED	151
-	1	1	1	2119798-2	DETENT PIN	145
-	1	1	1	2079383-8	SCR, BHSC, RoHS (M4 X 16)	144
-	4	4	4	2168400-5	SHCS, LOW HEAD, RoHS, M4 X 20	143
-	1	1	1	1-2119656-0	APPLICATOR BASIC ASSEMBLY, SF	141
-	1	1	1	2161312-1	RAM, STEPPED, ASIAN STYLE, SIDE FEED	140
-	1	1	1	2119092-2	BOLT, ADJUSTMENT	139
-	-	-	1	3-23627-7	PIN, RETAIN, GRVD, 3/16 X .854	137
-	-	-	1	2119799-1	HOLDER, FEED FINGER, AF	136
-	-	REF	-	SEE NOTE 4	MEMORY CHIP, PROGRAMMED	135
-	-	1	-	1633743-1	SERVO FEED LATCH ASM	133
-	-	REF	-	2119944-1	FEED FINGER ASSEMBLY, SF	117
-	1	1	1	2119955-1	ASSY, LUBRICATOR, SIDE FEED	113
-	1	1	1	1-455888-3	SPACER, CRIMPER	82
-	2	2	2	2079383-4	SCR, BHSC, RoHS (M4 X 8)	79
-	1	1	1	1803096-1	EXTENSION PLATE	78
-	1	1	1	2119956-1	DOCUMENTATION PACKAGE	71
-	1	-	1	2119740-1	TAG IDENTIFICATION	67
-	2	2	2	2168078-1	SCREW, DRIVE, RH, RoHS, 2 x .188	66
-	1	1	1	2119793-1	LIMITER, ADJUSTMENT BOLT	63
-	3	3	3	992763-5	SCR, SET, SOC, CONE POINT, M3 X 4.0	62
-	-	-	1	5-18022-5	SCR, HEX HD CAP, M4 X 6.0	59
-	-	-	1	1338683-8	FEED PAWL	56
-	2	2	2	1-2168083-0	SCR, SKT HD CAP, RoHS, M4 X 10	53
-	1	1	1	5018030-1	NUT, HEX, REG, RoHS, M3	52
-	1	1	1	811242-5	BUMPER, HOLD DOWN	51
-	1	1	1	690753-2	SPACER, TONKER	50
-	-	-	1	18023-9	SCR, SKT HD CAP M4 X 6.0	49
-	1	1	1	1-2079383-5	SCR, BHSC, RoHS (M8 X 40)	41
-	1	1	1	2119645-1	DISC, NUMBERED FA WIRE ADJUSTMENT	40
-	1	1	1	2119957-1	APPLICATOR SHIM PACK	39
-	1	1	1	2119644-3	RAM WASHER, PRECISION	38
-	1	1	1	2-1752356-0	SUPPORT, TERMINAL	34
-	2	2	2	2079383-5	SCR, BHSC, RoHS (M4 X 20)	33
-	1	1	1	2161328-1	HEX HEAD, FLANGED, M5 X 8mm LONG	32
-	1	1	1	1320908-3	SPACER, STRIP GUIDE	30
-	1	1	1	2119959-9	ASSEMBLY, STRIP GUIDE	29
-	1	1	1	455888-3	SPACER, CRIMPER	28
-	1	1	1	1320928-4	STRIP GUIDE	24
-	1	1	1	2168083-2	SCR, SKT HD CAP, RoHS, M4 X 8.0	21
-	2	2	2	1-18028-2	WASHER, FLAT, REG M4	20
-	1	1	1	2119533-1	STRIPPER, SIDE FEED	19
-	1	1	1	2119806-1	INSERT, SHEAR	13
-	1	1	1	4-22280-7	SPRING, COMPRESSION	12
-	1	1	1	1-356885-4	STOP, SHEAR	11
-	1	1	1	2119805-1	SHEAR HOLDER, FRONT	10
-	1	1	1	454276-5	FLOATING SHEAR, FRONT	9
-	1	1	1	2-1333229-5	ANVIL, COMBINATION	8
-	-	-	-	-	-	7
-	-	-	-	-	-	6
-	1	1	1	1-2119757-0	DEPRESSOR, SHEAR	5
-	1	1	1	1-238011-4	BLOCK, CRIMPER SPACER	4
-	1	1	1	1803228-6	CRIMPER, INSULATION F PREMIUM	3
-	1	1	1	455888-8	SPACER, CRIMPER	2
-	1	1	1	1-1803241-3	CRIMPER, WIRE F	1
-77	-27	-25	-22	PART NO	DESCRIPTION	ITEM NO

DIMENSIONS:		TOLERANCES UNLESS OTHERWISE SPECIFIED:		OWN	29SEP2015		TE Connectivity Harrisburg, PA 17105-3608
mm		0 PLC ±.1 1 PLC ±.1 2 PLC ±.1 3 PLC ±.1 4 PLC ±.1 ANGLES		CHK	29SEP2015		
MATERIAL:		FINISH:		APVD	29SEP2015	NAME Ocean Side Feed Applicator	
				PRODUCT SPEC		SIZE	CAGE CODE
				APPLICATION SPEC		00779	2266984
				WEIGHT		Customer Accessible Production Drawing	
				SCALE	1:2	SHEET	3 OF 4

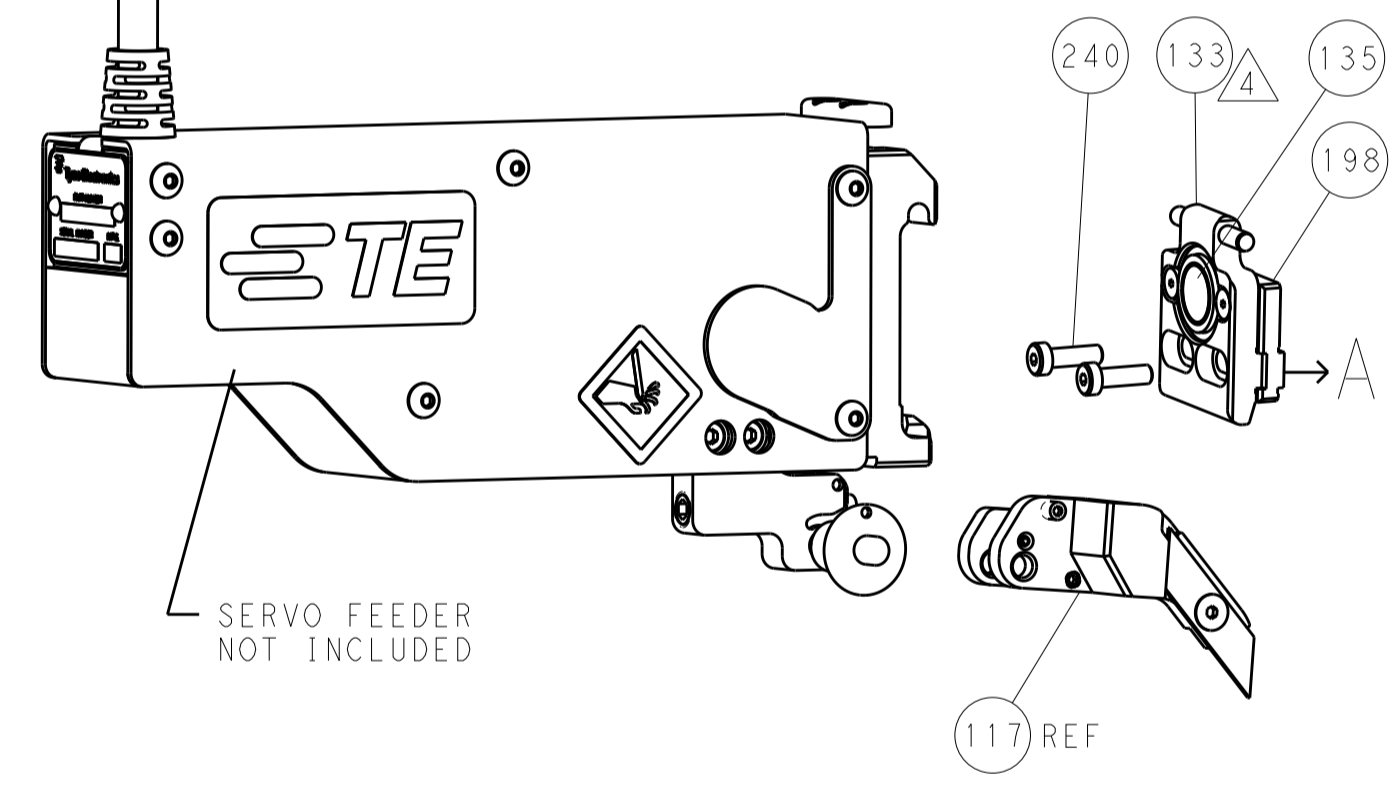
LOC		DIST		REVISIONS			
A	66	P	LTM	DESCRIPTION	DATE	DWN	APVD
		-		SEE SHEET 1			

FEED TYPE

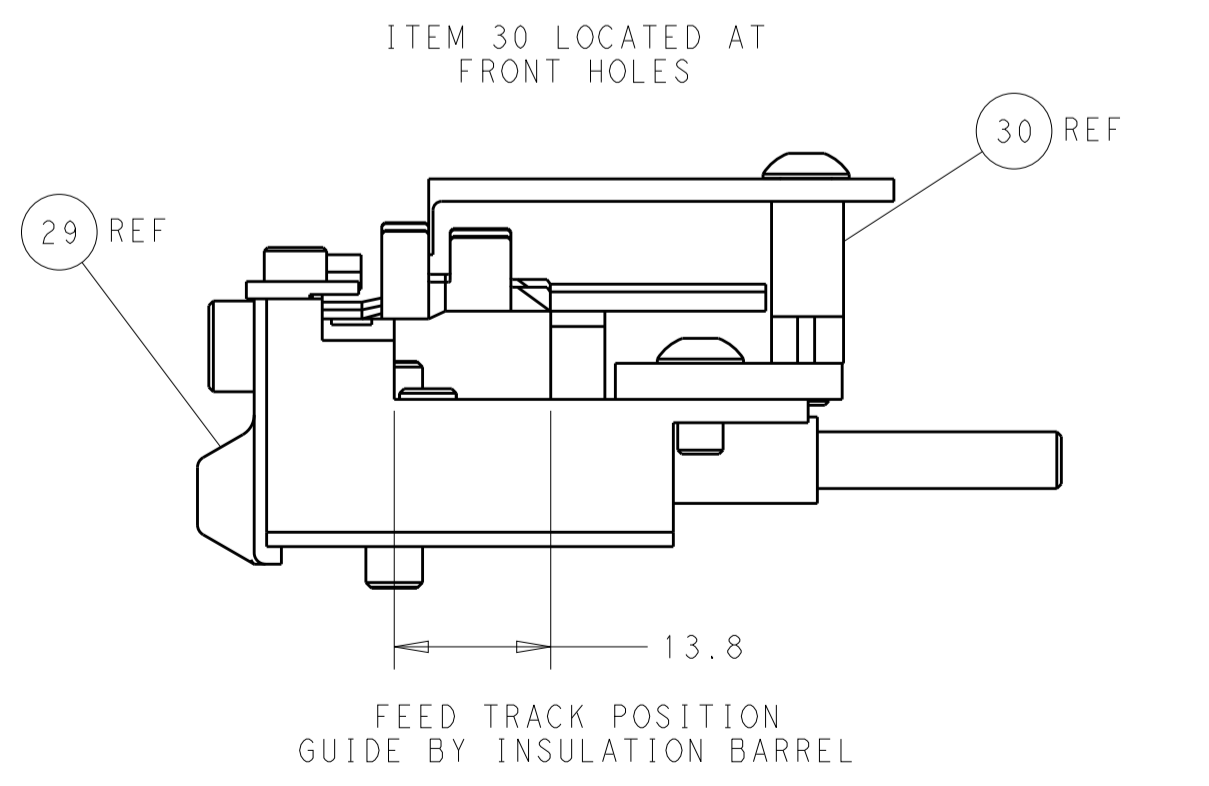
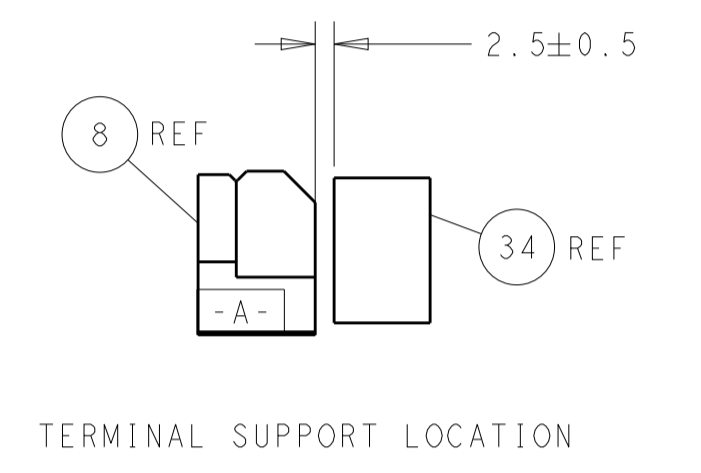
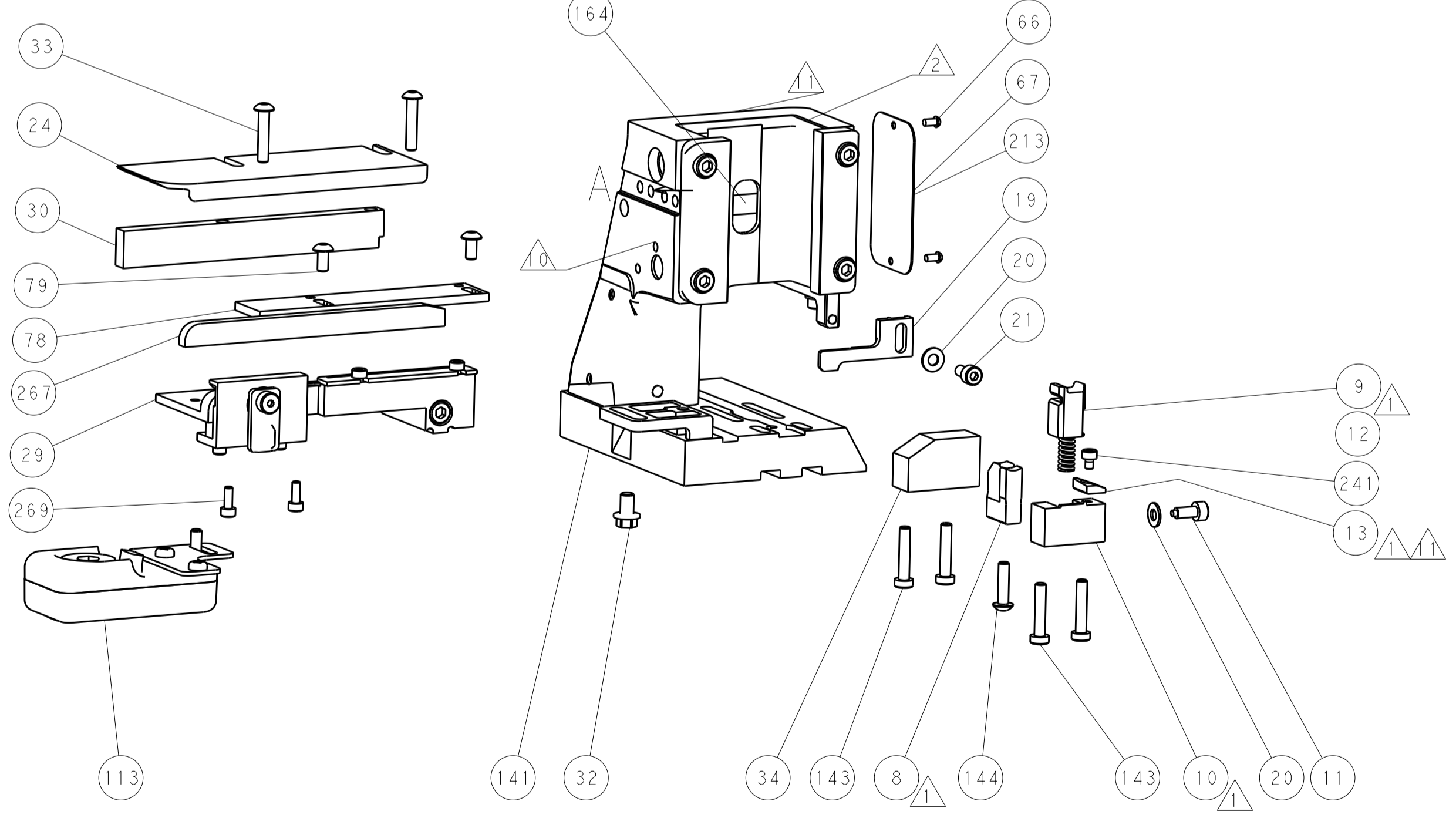
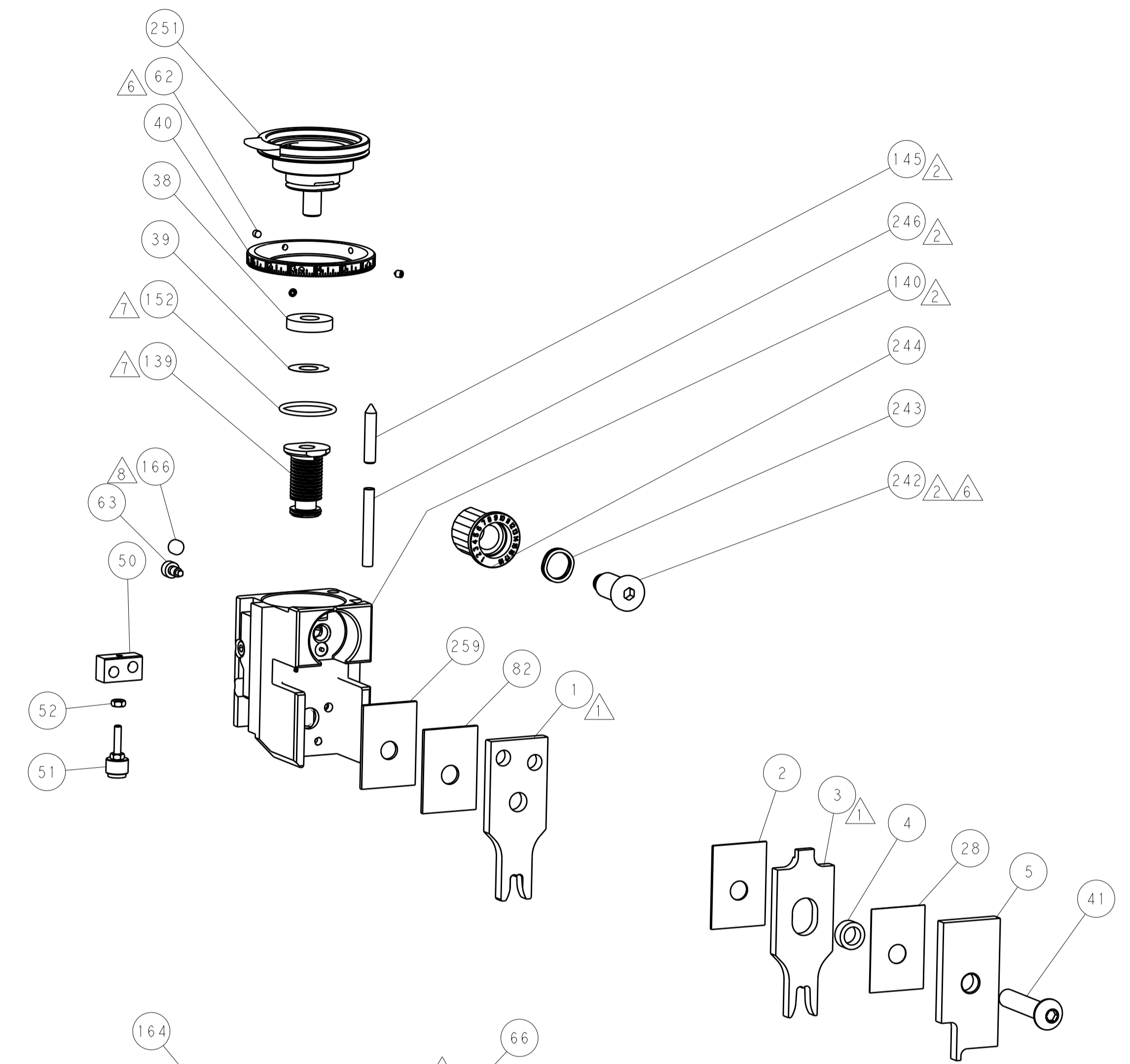
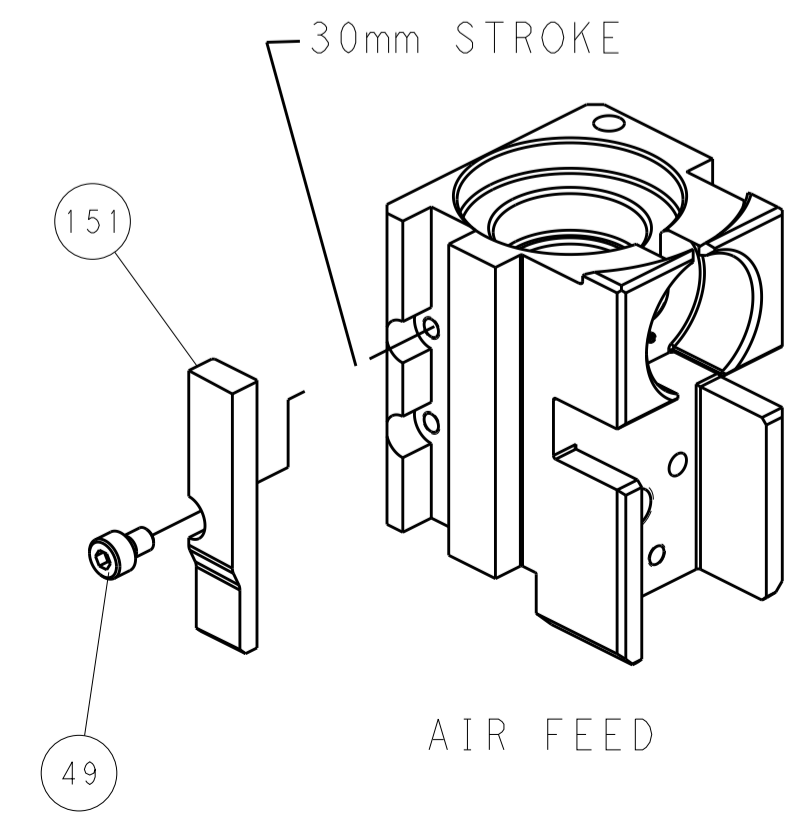
PNEUMATIC



SERVO LATCH PLATE



CAM POSITION



PACIFIC VERSION
 Shown on sheets 3 of 4 & 4 of 4
 (Atlantic version shown on sheets 1 of 4 & 2 of 4)

DIMENSIONS:		TOLERANCES UNLESS OTHERWISE SPECIFIED:		DWN X ZHAO 29SEP2015		STE TE Connectivity	
mm	0 PLC ±	1 PLC ±	2 PLC ±	3 PLC ±	4 PLC ±	5 PLC ±	Harrisburg, PA 17105-3608
MATERIAL:		FINISH:		CHK L ZHANG 29SEP2015		NAME	
				APVD JJ GUO 29SEP2015		Ocean Side Feed Applicator	
				PRODUCT SPEC		SIZE CAGE CODE DRAWING NO	
				APPLICATION SPEC		A1 00779 C=2266984	
				WEIGHT		RESTRICTED TO	
				Customer Accessible Production Drawing		SCALE 1:2 SHEET 4 OF 4 REV A	