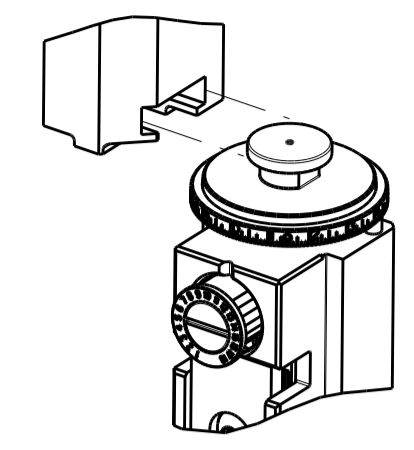


PART NUMBER	REVISION	DESCRIPTION	FEED TYPE
2266953-1	E	FINE CRIMP HEIGHT ADJUST	MECHANICAL
2266953-2	F	FINE CRIMP HEIGHT ADJUST	PNEUMATIC
5-2266953-1	E	SEAL STRIPPER CRIMPER TERMINATING UNIT	MECHANICAL
5-2266953-2	F	SEAL STRIPPER CRIMPER TERMINATING UNIT	PNEUMATIC
7-2266953-1	E	MECHANICAL AND CRIMP TOOLING KIT	MECHANICAL
7-2266953-2	F	PNEUMATIC AND CRIMP TOOLING KIT	PNEUMATIC
7-2266953-7	A	CRIMP TOOLING KIT	-

ATLANTIC VERSION TERMINATOR
 INTERFACE ADAPTER



APPLICATOR DATA		
CRIMP	SIZE	TYPE
WIRE	2.64 mm [.104]	F
INSUL	4.04 mm [.159]	O

APPLICATOR INSTRUCTIONS
 408-35042

TERMINAL DATA: KOSTAL TERMINAL KOSTAL CRIMP SPECIFICATION	
TERMINAL NAME: KOSTAL SLK 2.8 SWS TERMINAL	
WIRE STRIP LENGTH	TERMINAL INSULATION DIAMETER RANGE
3.80-4.40 mm [.150-.173 IN]	∅
TERMINAL APPLICATION SPECIFICATION DOC00074173 Rev 07	

TERMINALS APPLIED					SEAL INSULATION DIAMETER RANGE
TE TERMINAL	KOSTAL TERMINAL	TE SEAL	KOSTAL SEAL		
1572792-1	2 21 40 49207 0	1572798-1	1 08 00 44452 3		∅ 2.2-3.0mm
1572792-2	2 21 24 49207 0	2113568-1	10030681		∅ 1.7-2.1mm
1572792-3	2 21 25 49207 0	2209985-1	1 08 00 44452 3		∅ 2.2-3.0mm
2209983-1	2 21 40 49207 0	TE SEAL	LEAR/GHW SEAL		
2113108-1	1 01 40 49915 0	1949110-1	14448.627.621		∅ 1.7-2.1mm
2113108-2	1 01 24 49915 0				
2113108-3	1 01 25 49915 0				

TERMINAL DATA: KOSTAL TERMINAL KOSTAL CRIMP SPECIFICATION	
TERMINAL NAME: KOSTAL SLK 2.8 SWS TERMINAL	
WIRE STRIP LENGTH	TERMINAL INSULATION DIAMETER RANGE
3.80-4.40 mm [.150-.173 IN]	∅
TERMINAL APPLICATION SPECIFICATION DOC00074173 Rev 07	

TERMINALS APPLIED					SEAL INSULATION DIAMETER RANGE
TE TERMINAL	KOSTAL TERMINAL	TE SEAL	KOSTAL SEAL		
1572792-4	2 21 40 49207 5	1572798-1	1 08 00 44452 3		∅ 2.2-3.0mm
1572792-5	2 21 24 49207 5	2113568-1	10030681		∅ 1.7-2.1mm
1572792-6	2 21 25 49207 5	2209985-1	1 08 00 44452 3		∅ 2.2-3.0mm
2113108-4	1 01 40 49915 5	TE SEAL	LEAR/GHW SEAL		
2113108-5	1 01 24 49915 5	1949110-1	14448.627.621		∅ 1.7-2.1mm
2113108-6	1 01 25 49915 5				

WIRE SIZE	CRIMP HEIGHT mm [INCH]	CRIMP HEIGHT REFERENCE SETTING
2.50mm2	1.75+/-0.03 [.069+/- .001]	8.2
14 AWG	1.57+/-0.03 [.062+/- .001]	10.0
1.50mm2	1.47+/-0.03 [.058+/- .001]	11.0
16 AWG	1.39+/-0.03 [.055+/- .001]	11.8

WIRE SIZE	CRIMP HEIGHT mm [INCH]	CRIMP HEIGHT REFERENCE SETTING
2.50mm2	1.75+/-0.05 [.069+/- .002]	8.1
2.00mm2	1.65+/-0.05 [.065+/- .002]	9.2

- 1 RECOMMENDED SPARE PARTS
- 2 REFER TO SUPPLIED INSTRUCTION SHEET FOR CLEANING, LUBRICATION AND STORAGE OF APPLICATOR.
- 3 APPLY PART NUMBER 2-23419-6 LOCTITE TO THREADS OF ITEM 242. APPLY PART NUMBER 1-23419-5 LOCTITE TO THREADS OF ITEM 180.
- 4 CRIMP HEIGHT REFERENCE SETTING WAS THE SETTING USED WHEN THE APPLICATOR WAS QUALIFIED AT THE FACTORY. ADJUSTMENT MAY BE NECESSARY WHEN RUNNING APPLICATOR IN THE FIELD.
- 5 TERMINAL LUBRICANT IS RECOMMENDED.
- 6 UNLESS SPECIFIED OTHERWISE TORQUE VALUES SHALL BE USED PER DOCUMENT, 101-35000.
- 7 APPLY TORQ-SEAL IN ALLEN SOCKET TO FILL HOLE AFTER FLAT HD HAS BEEN ADJUSTED TO CORRECT HEIGHT AT QUALIFICATION. APPLY #1-23419-5 LOC-TITE TO THREADS.

***WARNING**
 ON INSTALLATION, SET WIRE DISC TO CRIMP HEIGHT REFERENCE SETTING FOR LARGEST WIRE SIZE. CRIMP HEIGHT REFERENCE SETTINGS GREATER THAN THE VALUE SHOWN MAY CAUSE DAMAGE TO THE CRIMP TOOLING. REFER TO THE INSTRUCTION SHEET FOR PROPER SETUP AND ADJUSTMENTS.

LOC	DIST	REV	DATE	BY	CHKD	APPD
A	66	D	11AUG2018	TB	TE	
		D1	18FEB2019	FL	CT	
		E	24MAR2020	JAH	GB	
		F	17NOV2020	FJ	YY	

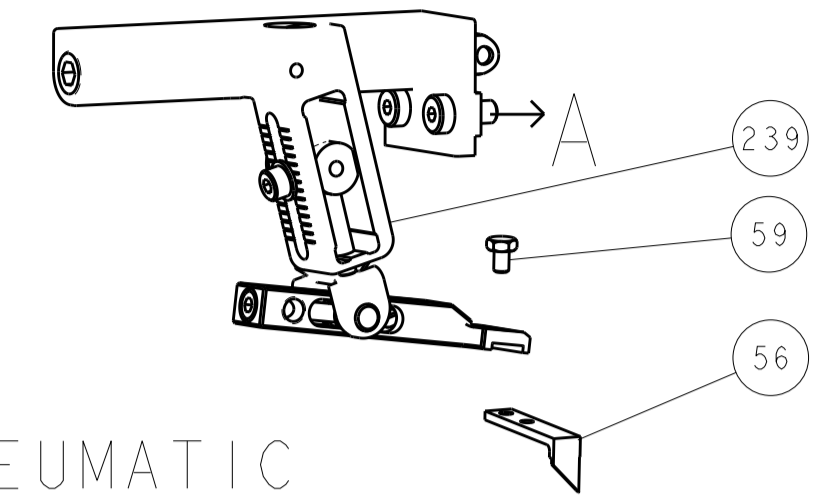
REV	DATE	BY	CHKD	APPD	DESCRIPTION	ITEM NO	
-	-	-	-	-	1803515-3	RAM ASSEMBLY, SF ATLANTIC	293
-	-	-	-	-	2-1803583-1	APPLICATOR BASIC ASSEMBLY, SF	292
-	-	-	-	-	2119641-1	FEED CAM, AIR FEED	248
-	-	-	-	-	2119082-3	CAM, SNAIL, INSULATION ADJUSTMENT	244
-	-	-	-	-	2079764-1	WASHER, WAVE SPRING, CREST-TO-CREST	243
-	-	-	-	-	2119083-1	RETAINER, INSULATION DIAL	242
-	-	-	-	-	7-18023-7	SCR, SKT HD CAP M3 X 4.0	241
-	-	-	-	-	2119580-1	MECHANICAL FEED ASSEMBLY	239
-	-	-	-	-	2844940-1	AIR FEED MODULE	238
-	-	-	-	-	4-1722335-3	STRIPPER, SIDE FEED	182
-	-	-	-	-	1-5018030-0	NUT, HEX, REG, RoHS, M3.5	181
-	-	-	-	-	2-1752354-0	STANDOFF, HOLD-DOWN	180
-	-	-	-	-	993111-1	PIN, SLOTTED SPRING 3.0 X 20.0	177
-	-	-	-	-	5-22280-0	SPRING, COMPRESSION	176
-	-	-	-	-	1752353-3	GUIDE PIN, HOLDDOWN	175
-	-	-	-	-	1901680-2	GUIDE PIN, HOLDDOWN	174
-	-	-	-	-	994970-2	COUNTER, MAGNETIC	164
-	-	-	-	-	2119955-1	ASSY, LUBRICATOR, SIDE FEED	113
-	-	-	-	-	2844908-1	SCREW, LOCKING	99
-	-	-	-	-	2844907-1	POST, LOCKING	98
-	-	-	-	-	455888-7	SPACER, CRIMPER	82
-	-	-	-	-	1803607-3	DOCUMENTATION PACKAGE	71
-	-	-	-	-	2119740-1	TAG, IDENTIFICATION	67
-	-	-	-	-	2168078-1	SCREW, DRIVE, RH, RoHS, 2 x .188	66
-	-	-	-	-	2168083-2	SCR, SKT HD CAP, RoHS, M4 X 8.0	60
-	-	-	-	-	5-18022-5	SCR, HEX HD CAP, M4 X 6.0	59
-	-	-	-	-	985575-3	SCR, FLT SKT HD CAP M3 X 10.0	57
-	-	-	-	-	1338685-1	PAWL, FEED	56
-	-	-	-	-	2168083-3	SCR, SKT HD CAP, RoHS, M4 X 12.0	54
-	-	-	-	-	2168083-8	SCR, SKT HD CAP, RoHS, M4 X 16	53
-	-	-	-	-	5018030-1	NUT, HEX, REG, RoHS, M3	52
-	-	-	-	-	811242-5	BUMPER, HOLD DOWN	51
-	-	-	-	-	690753-2	SPACER, TONKER	50
-	-	-	-	-	18023-9	SCR, SKT HD CAP M4 X 6.0	49
-	-	-	-	-	2119652-1	FEED CAM, PRE FEED	48
-	-	-	-	-	2119653-1	FEED CAM, POST FEED	47
-	-	-	-	-	1803583-9	APPLICATOR BASIC ASSEMBLY, SF	46
-	-	-	-	-	1803515-1	RAM ASSEMBLY, SF ATLANTIC	44
-	-	-	-	-	1803602-1	SCR, BHSC, RoHS (M8 X 25)	41
-	-	-	-	-	1752356-1	SUPPORT, TERMINAL	34
-	-	-	-	-	2079383-5	SCR, BHSC, RoHS (M4 X 20)	33
-	-	-	-	-	3-2844962-0	SPACER, CYLINDRICAL, STRIP GUIDE	30
-	-	-	-	-	2844992-2	ASSEMBLY, STRIP GUIDE	29
-	-	-	-	-	455888-3	SPACER, CRIMPER	28
-	-	-	-	-	1320928-6	STRIP GUIDE	24
-	-	-	-	-	2168083-2	SCR, SKT HD CAP, RoHS, M4 X 8.0	21
-	-	-	-	-	1-18028-2	WASHER, FLAT, REG M4	20
-	-	-	-	-	2119533-1	STRIPPER, SIDE FEED	19
-	-	-	-	-	2119806-1	INSERT, SHEAR	13
-	-	-	-	-	3-22280-3	SPRING, COMPRESSION	12
-	-	-	-	-	1-356885-4	STOP, SHEAR	11
-	-	-	-	-	2119805-1	SHEAR HOLDER, FRONT	10
-	-	-	-	-	318707-1	FLOATING SHEAR, FRONT	9
-	-	-	-	-	1803055-6	ANVIL, COMBINATION	8
-	-	-	-	-	2-240641-9	SPACER	7
-	-	-	-	-	-	-	6
-	-	-	-	-	2119781-1	DEPRESSOR, SHEAR	5
-	-	-	-	-	238011-4	BLOCK, CRIMPER SPACER	4
-	-	-	-	-	2-2119784-9	CRIMPER, INSULATION O PREMIUM	3
-	-	-	-	-	1-455888-3	SPACER, CRIMPER	2
-	-	-	-	-	9-1633305-1	CRIMPER, WIRE PREMIUM	1

ATLANTIC VERSION
 Shown on sheets 1 of 4 & 2 of 4
 (Pacific version shown on sheets 3 of 4 & 4 of 4)

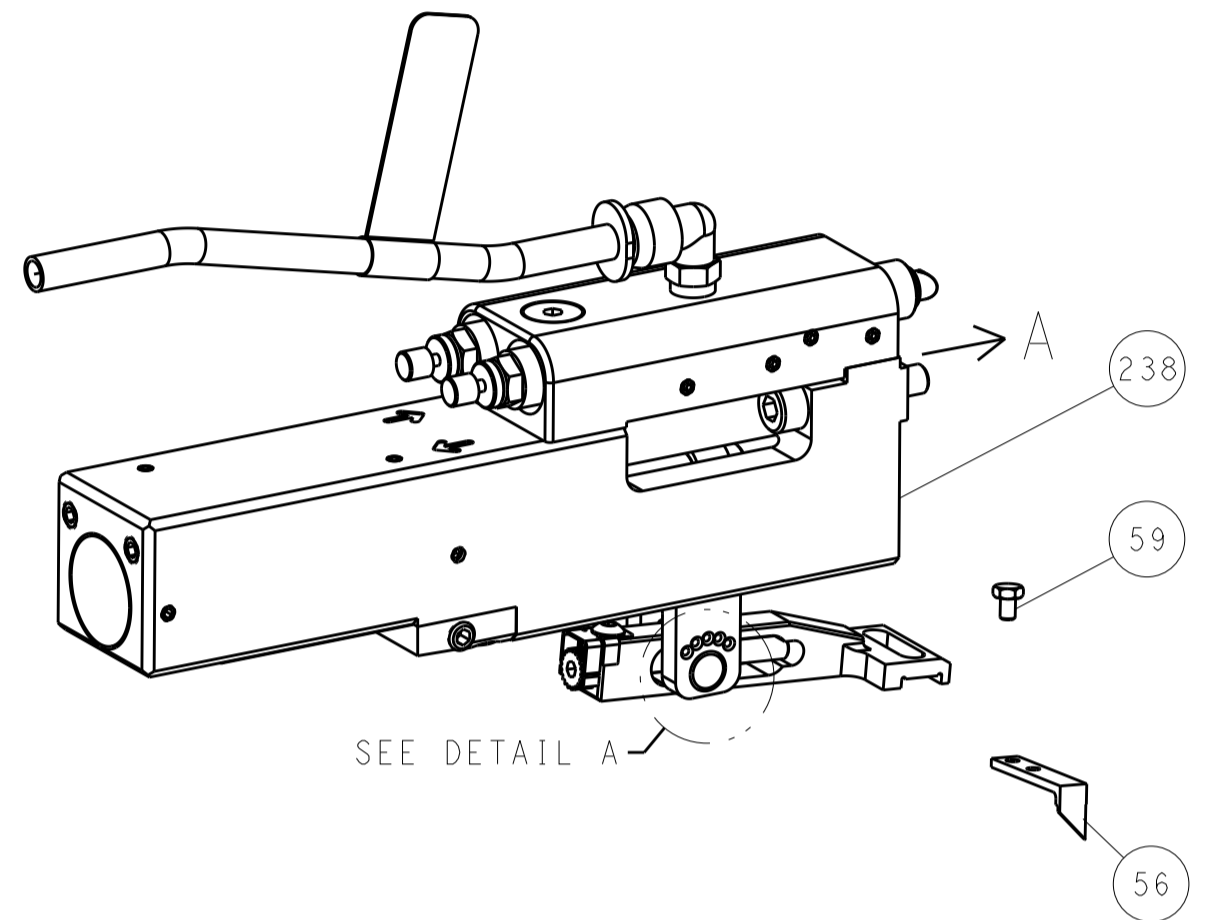
DIMENSIONS:	TOLERANCES UNLESS OTHERWISE SPECIFIED:	OWN	DATE	NAME
mm	0 PLC ±	HOFFNER	20AUG2015	TE Connectivity
	1 PLC ±	T. ELBIN	21AUG2015	Harrisburg, PA 17105-3608
	2 PLC ±	T. ELBIN	21AUG2015	
	3 PLC ±			
	4 PLC ±			
	ANGLES ±			
MATERIAL	FINISH	PRODUCT SPEC	APPLICATION SPEC	SIZE
				A1 00779
		WEIGHT	SCALE	1:2
			SHEET	1 of 4
			REV	F

LOC	DIST	REV	DATE	BY	APP'D
A	66				

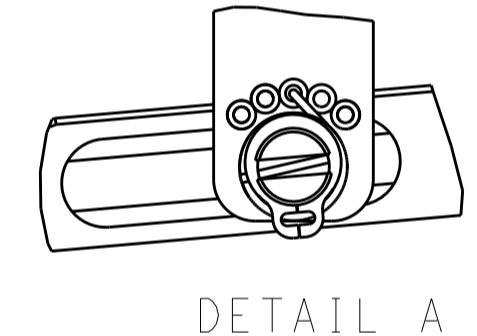
FEED TYPE MECHANICAL



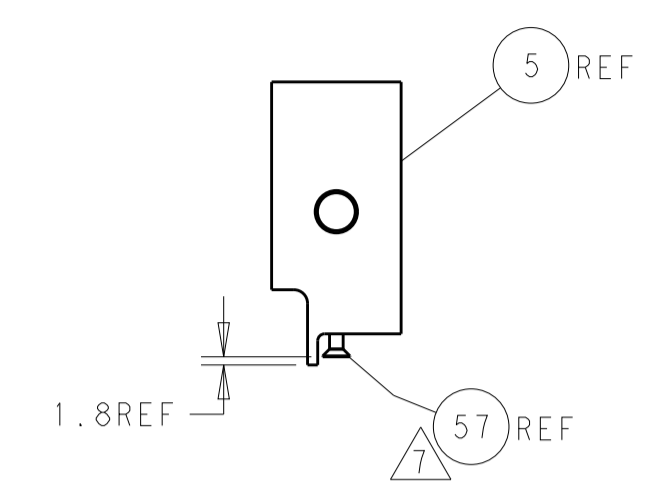
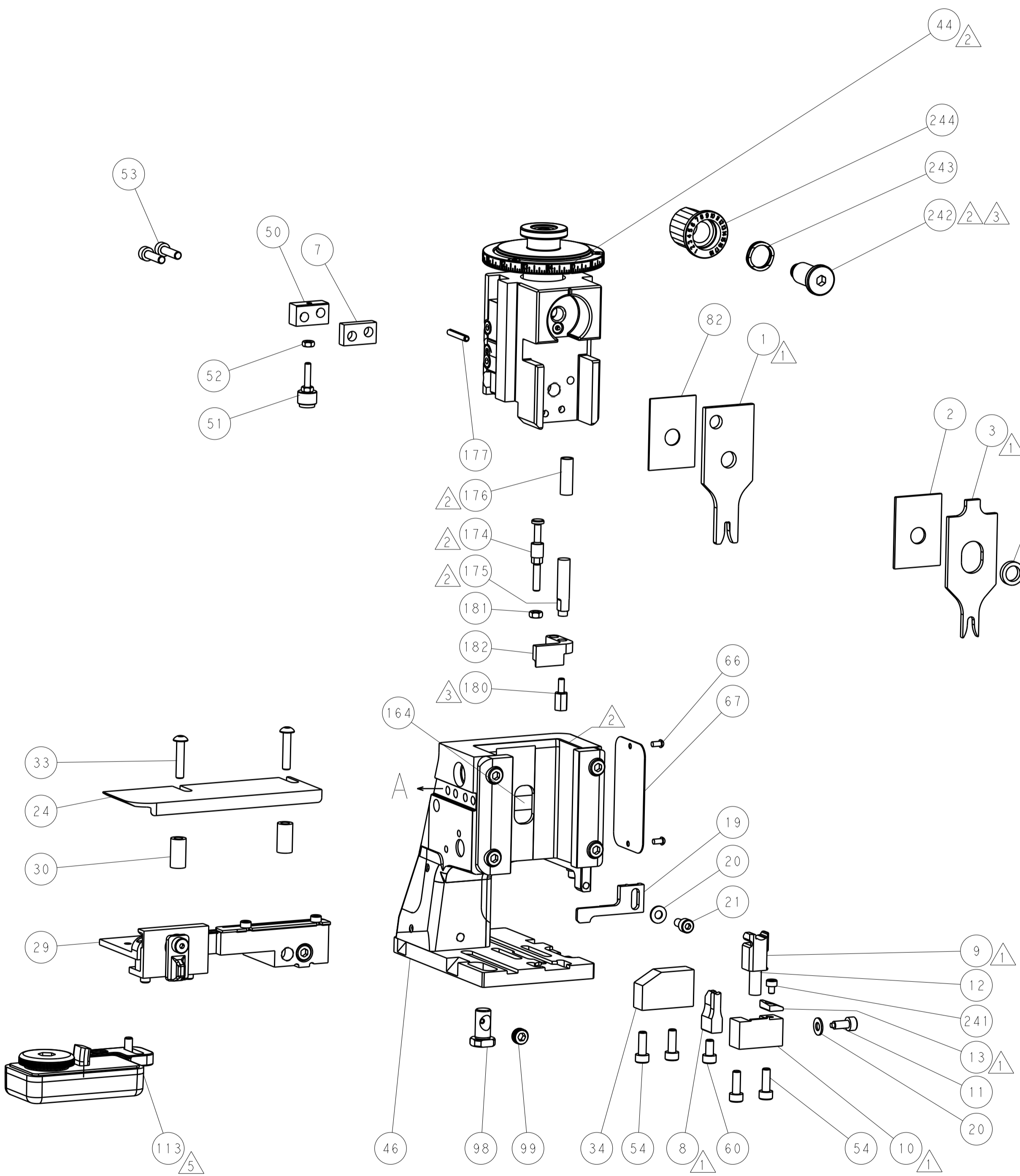
PNEUMATIC



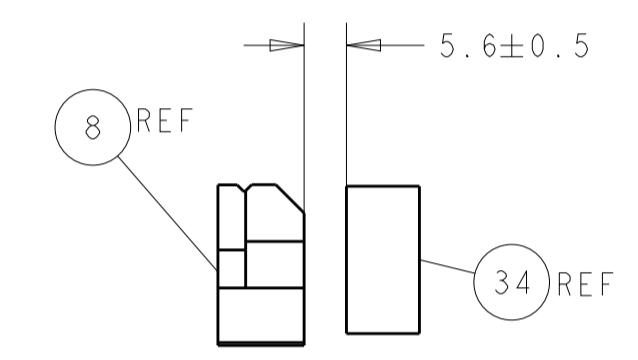
FEED SPRING SETTING POSITION (SHOWN FROM REAR SIDE)



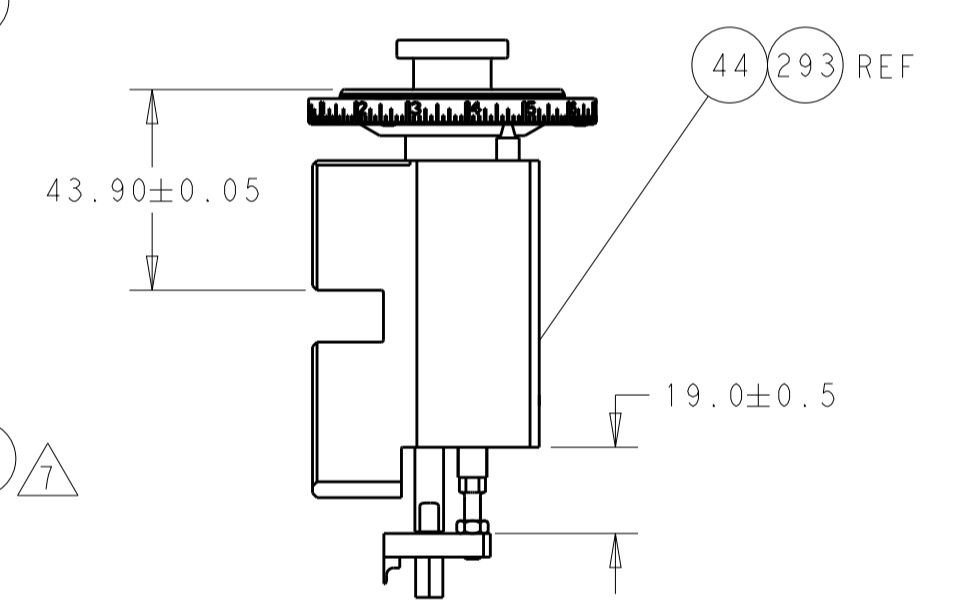
DETAIL A



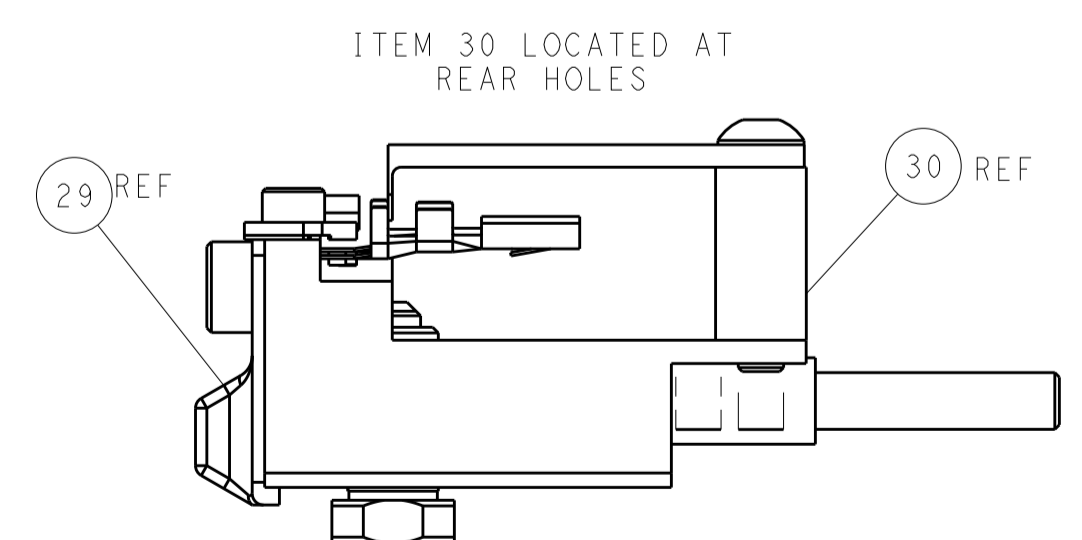
SHEAR DEPRESSOR DETAIL



TERMINAL SUPPORT LOCATION

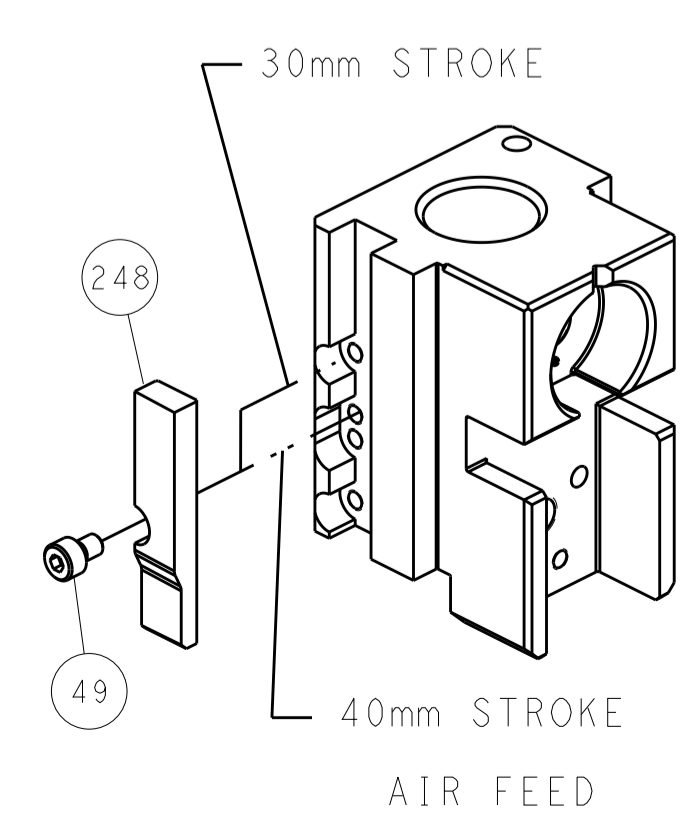
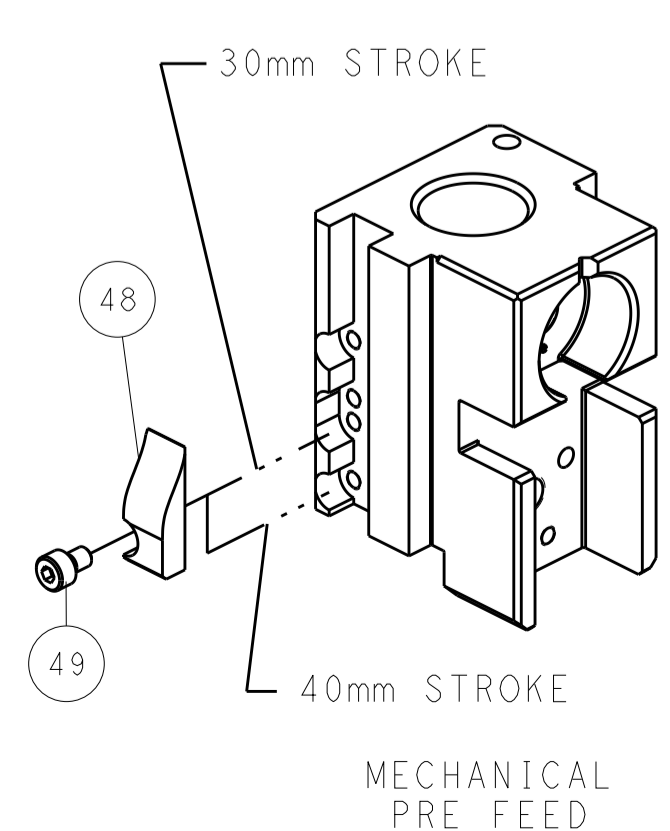
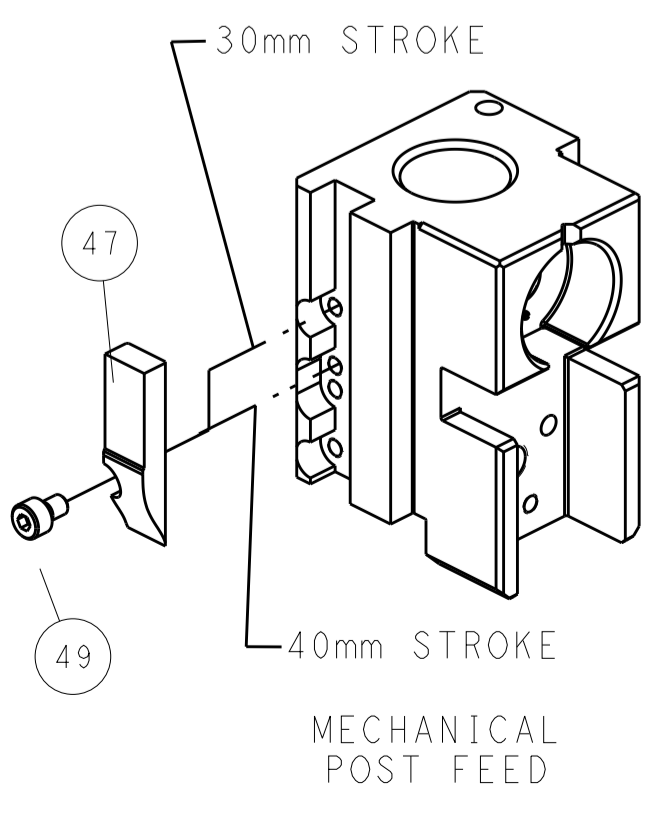


RAM SET-UP



ITEM 30 LOCATED AT REAR HOLES

CAM POSITIONS



ATLANTIC VERSION
 Shown on sheets 1 of 4 & 2 of 4
 (Pacific version shown on sheets 3 of 4 & 4 of 4)

DIMENSIONS: mm 		TOLERANCES UNLESS OTHERWISE SPECIFIED: 0 PLC ± 1 PLC ± 2 PLC ± 3 PLC ± 4 PLC ± ANGLES ±		DWN: HOFFNER 20AUG2015 CHK: T. ELBIN 21AUG2015 APVD: T. ELBIN 21AUG2015		NAME: Ocean Side Feed Applicator SIZE: A1 CAGE CODE: 00779 DRAWING NO: 2266953		RESTRICTED TO: F SCALE: 1:2 SHEET: 2 of 4 REV: F	
MATERIAL:				WEIGHT:		PRODUCT SPEC:		APPLICATION SPEC:	
Customer Accessible Production Drawing									

PART NUMBER	REVISION	DESCRIPTION	FEED TYPE
2-2266953-1	E	FINE CRIMP HEIGHT ADJUST	MECHANICAL
2-2266953-2	F	FINE CRIMP HEIGHT ADJUST	PNEUMATIC
7-2266953-7	A	CRIMP TOOLING KIT	-

PACIFIC VERSION TERMINATOR
INTERFACE ADAPTER



APPLICATOR DATA		
CRIMP	SIZE	TYPE
WIRE	2.64 mm [.104]	F
INSUL	4.04 mm [.159]	O
APPLICATOR INSTRUCTIONS 408-35042		

TERMINAL DATA: KOSTAL TERMINAL KOSTAL CRIMP SPECIFICATION	
TERMINAL NAME: KOSTAL SLK 2.8 SWS TERMINAL	
WIRE STRIP LENGTH	TERMINAL INSULATION DIAMETER RANGE
3.80-4.40 mm [.150-.173 IN]	∅
TERMINAL APPLICATION SPECIFICATION	DOC00074173 Rev 07

TERMINALS APPLIED				
TE TERMINAL	KOSTAL TERMINAL	TE SEAL	KOSTAL SEAL	SEAL INSULATION DIAMETER RANGE
1572792-1	2 21 40 49207 0	1572798-1	1 08 00 44452 3	∅2.2-3.0mm
1572792-2	2 21 24 49207 0	2113568-1	10030681	∅1.7-2.1mm
1572792-3	2 21 25 49207 0	2209985-1	1 08 00 44452 3	∅2.2-3.0mm
2209983-1	2 21 40 49207 0	TE SEAL	LEAR/GHW SEAL	
2113108-1	1 01 40 49915 0	1949110-1	14448.627.621	∅1.7-2.1mm
2113108-2	1 01 24 49915 0			
2113108-3	1 01 25 49915 0			

TERMINAL DATA: KOSTAL TERMINAL KOSTAL CRIMP SPECIFICATION	
TERMINAL NAME: KOSTAL SLK 2.8 SWS TERMINAL	
WIRE STRIP LENGTH	TERMINAL INSULATION DIAMETER RANGE
3.80-4.40 mm [.150-.173 IN]	∅
TERMINAL APPLICATION SPECIFICATION	DOC00074173 Rev 07

TERMINALS APPLIED				
TE TERMINAL	KOSTAL TERMINAL	TE SEAL	KOSTAL SEAL	SEAL INSULATION DIAMETER RANGE
1572792-4	2 21 40 49207 5	1572798-1	1 08 00 44452 3	∅2.2-3.0mm
1572792-5	2 21 24 49207 5	2113568-1	10030681	∅1.7-2.1mm
1572792-6	2 21 25 49207 5	2209985-1	1 08 00 44452 3	∅2.2-3.0mm
2113108-4	1 01 40 49915 5	TE SEAL	LEAR/GHW SEAL	
2113108-5	1 01 24 49915 5	1949110-1	14448.627.621	∅1.7-2.1mm
2113108-6	1 01 25 49915 5			

WIRE SIZE	CRIMP HEIGHT mm [INCH]	CRIMP HEIGHT REFERENCE SETTING
2.50mm2	1.75+/-0.03 [.069+/- .001]	8.2
14 AWG	1.57+/-0.03 [.062+/- .001]	10.0
1.50mm2	1.47+/-0.03 [.058+/- .001]	11.0
16 AWG	1.39+/-0.03 [.055+/- .001]	11.8

WIRE SIZE	CRIMP HEIGHT mm [INCH]	CRIMP HEIGHT REFERENCE SETTING
2.50mm2	1.75+/-0.05 [.069+/- .002]	8.1
2.00mm2	1.65+/-0.05 [.065+/- .002]	9.2

- △ RECOMMENDED SPARE PARTS
- △ REFER TO SUPPLIED INSTRUCTION SHEET FOR CLEANING, LUBRICATION AND STORAGE OF APPLICATOR.
- △ APPLY PART NUMBER 2-23419-6 LOCTITE TO THREADS OF ITEM 242.
- △ CRIMP HEIGHT REFERENCE SETTING WAS THE SETTING USED WHEN THE APPLICATOR WAS QUALIFIED AT THE FACTORY. ADJUSTMENT MAY BE NECESSARY WHEN RUNNING APPLICATOR IN THE FIELD.
- △ TERMINAL LUBRICANT IS RECOMMENDED.
- 6. UNLESS SPECIFIED OTHERWISE TORQUE VALUES SHALL BE USED PER DOCUMENT, 101-35000.
- △ APPLY TORQ-SEAL IN ALLEN SOCKET TO FILL HOLE AFTER FLAT HD HAS BEEN ADJUSTED TO CORRECT HEIGHT AT QUALIFICATION. APPLY #1-23419-5 LOC-TITE TO THREADS.

***WARNING**
ON INSTALLATION, SET WIRE DISC TO CRIMP HEIGHT REFERENCE SETTING FOR LARGEST WIRE SIZE. CRIMP HEIGHT REFERENCE SETTINGS GREATER THAN THE VALUE SHOWN MAY CAUSE DAMAGE TO THE CRIMP TOOLING. REFER TO THE INSTRUCTION SHEET FOR PROPER SETUP AND ADJUSTMENTS.

LOC	DIST	REVISIONS			
A	66	REV	DATE	BY	APPV
-	-	SEE SHEET 1	-	-	-

-	1	1	2119082-3	CAM, SNAIL, INSULATION ADJUSTMENT	244
-	1	1	2079764-1	WASHER, WAVE SPRING, CREST-TO-CREST	243
-	1	1	2119083-1	RETAINER, INSULATION DIAL	242
-	1	1	7-18023-7	SCR, SKT HD CAP M3 X 4.0	241
-	-	1	2119580-1	MECHANICAL FEED ASSEMBLY	239
-	1	-	2844940-1	AIR FEED MODULE	238
-	REF	REF	994970-2	COUNTER, MAGNETIC	164
-	1	-	2119641-2	FEED CAM, AIR FEED	151
-	1	1	2168083-8	SCR, SKT HD CAP, RoHS, M4 X 16	144
-	4	4	2168083-9	SCR, SKT HD CAP, RoHS, M4 X 20	143
-	-	1	2119653-2	FEED CAM, POST FEED	142
-	1	1	1-1803583-0	APPLICATOR BASIC ASSEMBLY, SF	141
-	1	1	1803516-1	RAM ASSEMBLY, SF PACIFIC	140
-	1	1	2119955-1	ASSY, LUBRICATOR, SIDE FEED	113
-	1	1	2844908-1	SCREW, LOCKING	99
-	1	1	2844907-1	POST, LOCKING	98
-	1	1	455888-7	SPACER, CRIMPER	82
-	1	1	1803607-3	DOCUMENTATION PACKAGE	71
-	1	1	2119740-1	TAG, IDENTIFICATION	67
-	2	2	2168078-1	SCREW, DRIVE, RH, RoHS, 2 x .188	66
-	1	1	5-18022-5	SCR, HEX HD CAP, M4 X 6.0	59
-	1	1	985575-3	SCR, FLT SKT HD CAP M3 X 10.0	57
-	1	1	1338685-1	PAWL, FEED	56
-	2	2	2168083-8	SCR, SKT HD CAP, RoHS, M4 X 16	53
-	1	1	5018030-1	NUT, HEX, REG, RoHS, M3	52
-	1	1	811242-5	BUMPER, HOLD DOWN	51
-	1	1	690753-2	SPACER, TONKER	50
-	1	2	18023-9	SCR, SKT HD CAP M4 X 6.0	49
-	-	1	2119652-1	FEED CAM, PRE FEED	48
-	1	1	1803602-1	SCR, BHSC, RoHS (M8 X 25)	41
-	1	1	1752356-1	SUPPORT, TERMINAL	34
-	2	2	2079383-5	SCR, BHSC, RoHS (M4 X 20)	33
-	2	2	3-2844962-0	SPACER, CYLINDRICAL, STRIP GUIDE	30
-	1	1	2844992-2	ASSEMBLY, STRIP GUIDE	29
-	1	1	455888-3	SPACER, CRIMPER	28
-	1	1	1320928-6	STRIP GUIDE	24
-	1	1	2168083-2	SCR, SKT HD CAP, RoHS, M4 X 8.0	21
-	2	2	1-18028-2	WASHER, FLAT, REG M4	20
-	1	1	2119533-1	STRIPPER, SIDE FEED	19
-	1	1	2119806-1	INSERT, SHEAR	13
-	1	1	3-22280-3	SPRING, COMPRESSION	12
-	1	1	1-356885-4	STOP, SHEAR	11
-	1	1	2119805-1	SHEAR HOLDER, FRONT	10
-	1	1	318707-1	FLOATING SHEAR, FRONT	9
-	1	1	1803055-6	ANVIL, COMBINATION	8
-	1	1	2-240641-9	SPACER	7
-	-	-	-	-	6
-	1	1	2119781-1	DEPRESSOR, SHEAR	5
-	1	1	238011-4	BLOCK, CRIMPER SPACER	4
-	1	1	2-2119784-9	CRIMPER, INSULATION O PREMIUM	3
-	1	1	1-455888-3	SPACER, CRIMPER	2
-	1	1	9-1633305-1	CRIMPER, WIRE PREMIUM	1

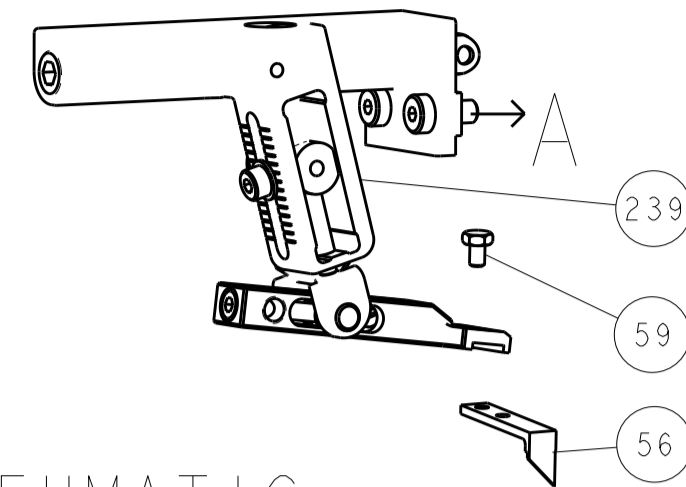
PACIFIC VERSION
Shown on sheets 3 of 4 & 4 of 4
(Atlantic version shown on sheets 1 of 4 & 2 of 4)

DIMENSIONS:		TOLERANCES UNLESS OTHERWISE SPECIFIED:		MATERIAL:	
mm	0 PLC ±	1 PLC ±	2 PLC ±	3 PLC ±	4 PLC ±
ANGLES	FINISH				

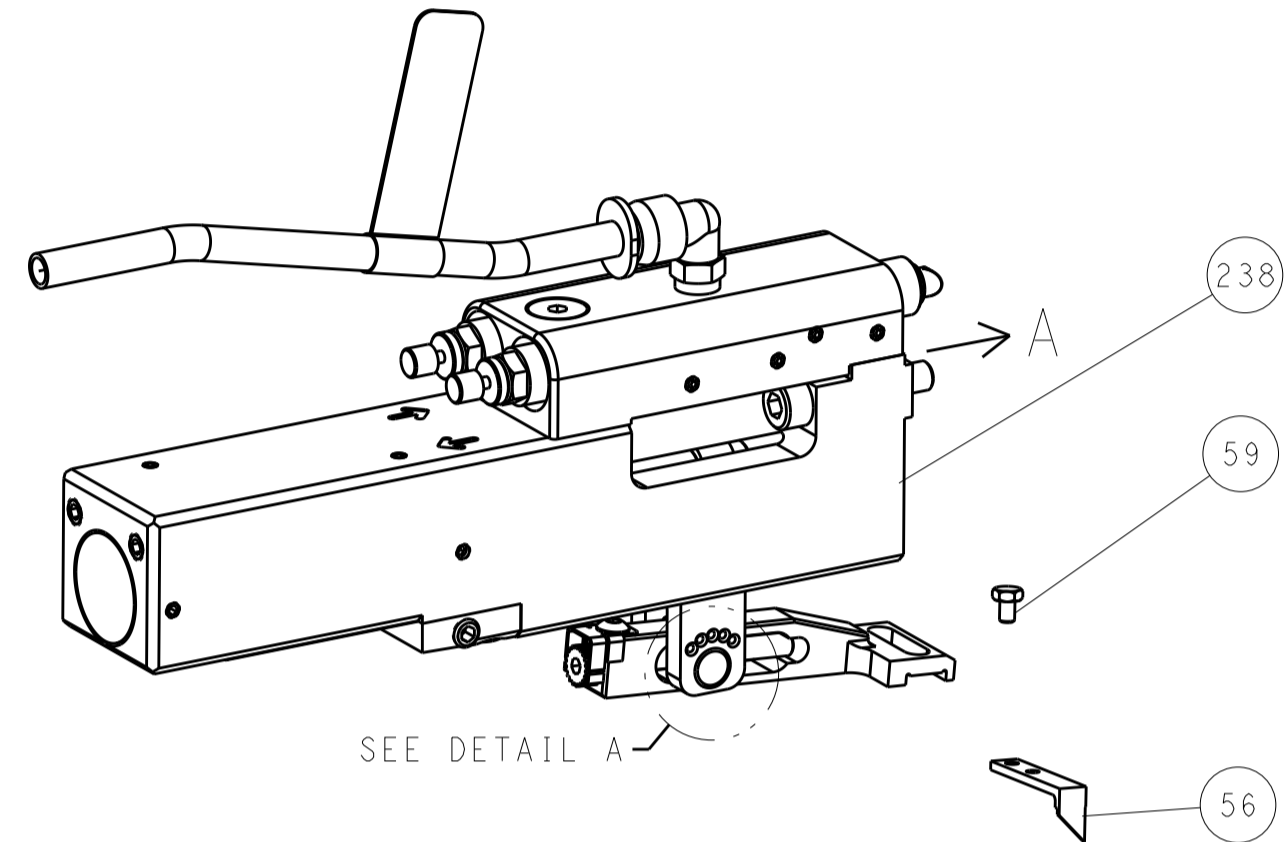
OWN	HOFFNER	20AUG2015
CHK	T. ELBIN	21AUG2015
APPV	T. ELBIN	21AUG2015
PRODUCT SPEC	-	
APPLICATION SPEC	-	
SIZE	CAGE CODE	DRAWING NO
A1	00779	2266953
Customer Accessible Production Drawing		
SCALE	1:2	SHEET 3 OF 4
REV	F	

LOC	DIST	REV	DATE	BY	APP'D
A	66				
REVISIONS			DESCRIPTION	DATE	BY
			SEE SHEET 1		

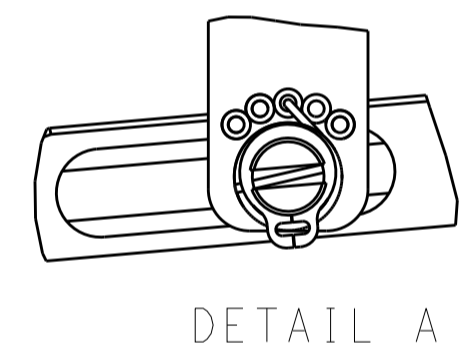
FEED TYPE MECHANICAL



PNEUMATIC

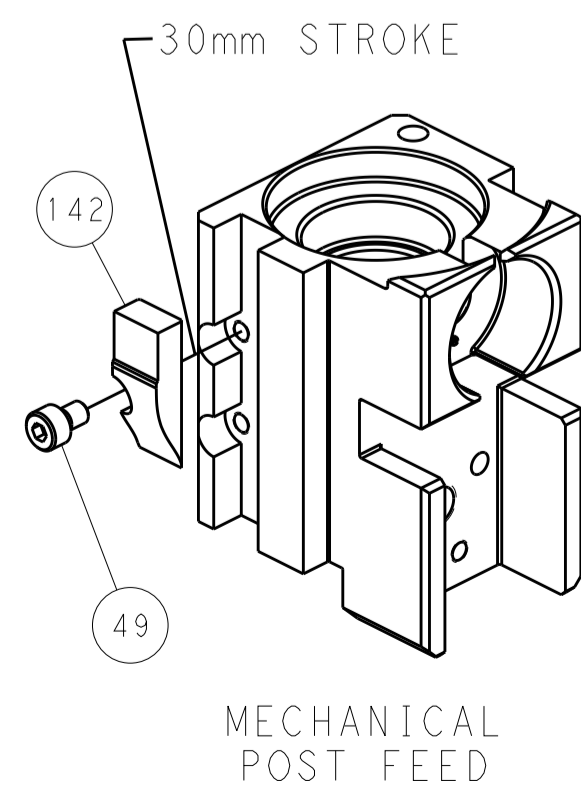


FEED SPRING SETTING POSITION (SHOWN FROM REAR SIDE)

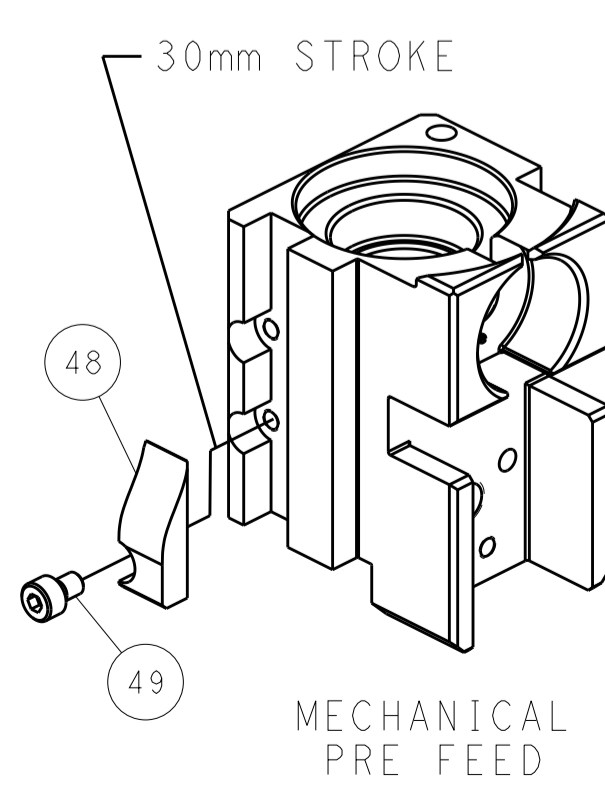


DETAIL A

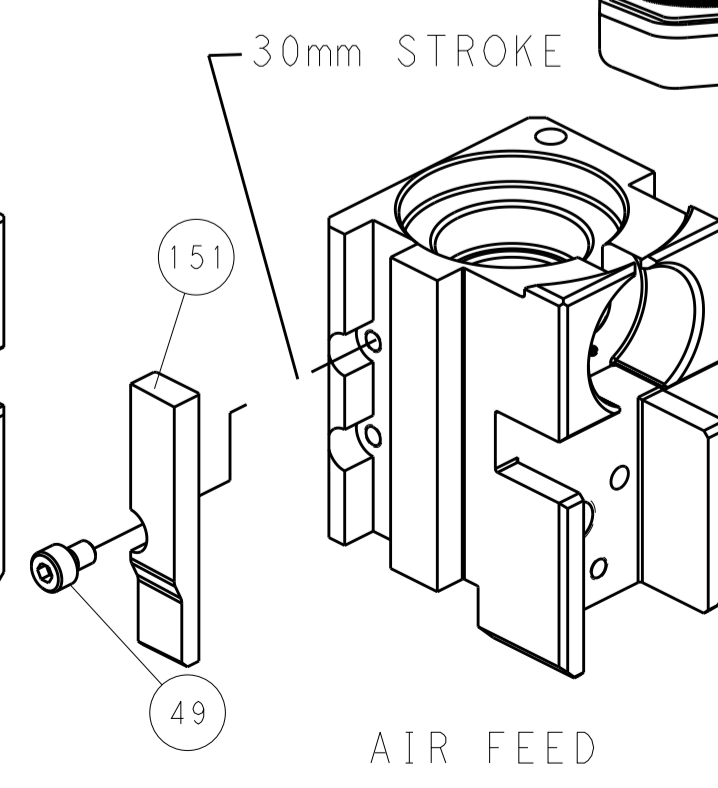
CAM POSITIONS



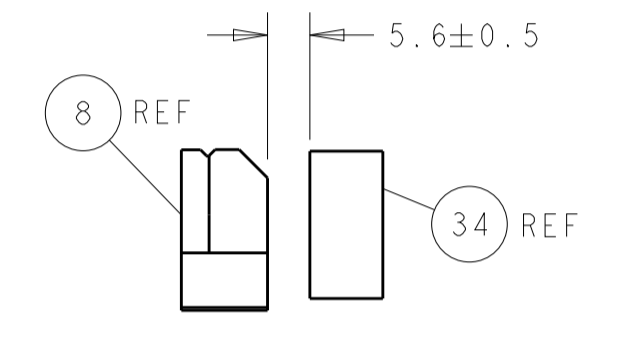
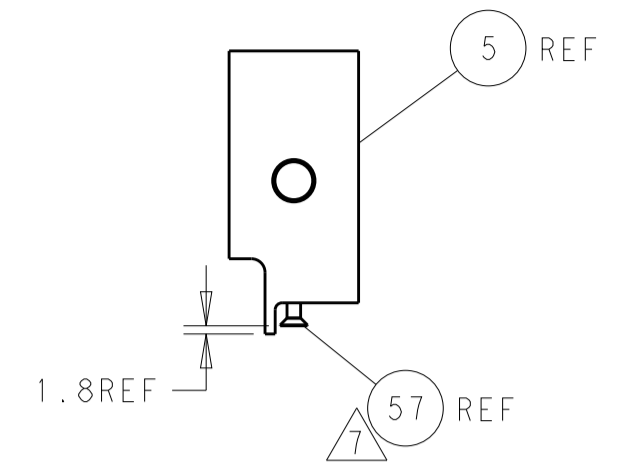
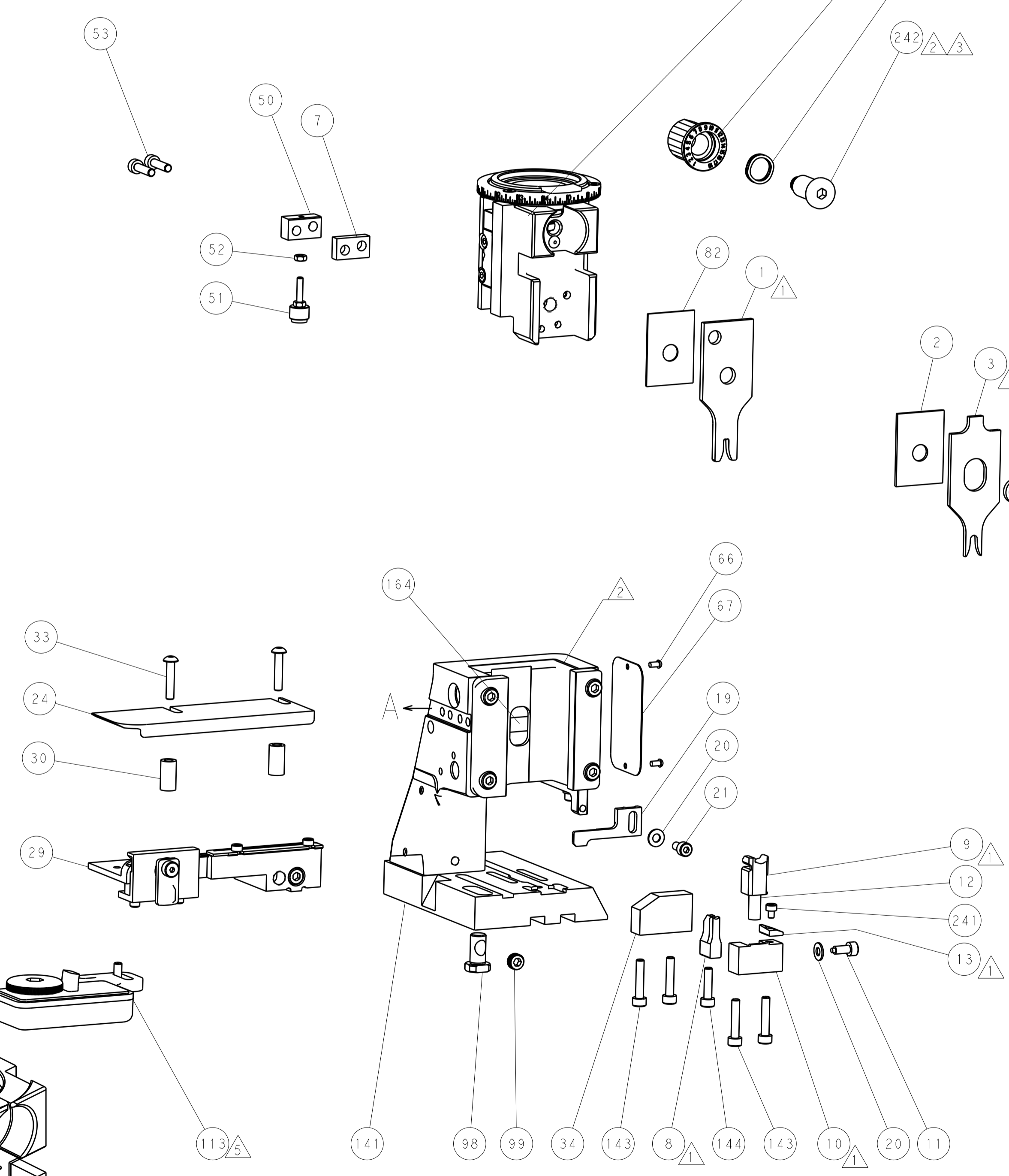
MECHANICAL POST FEED



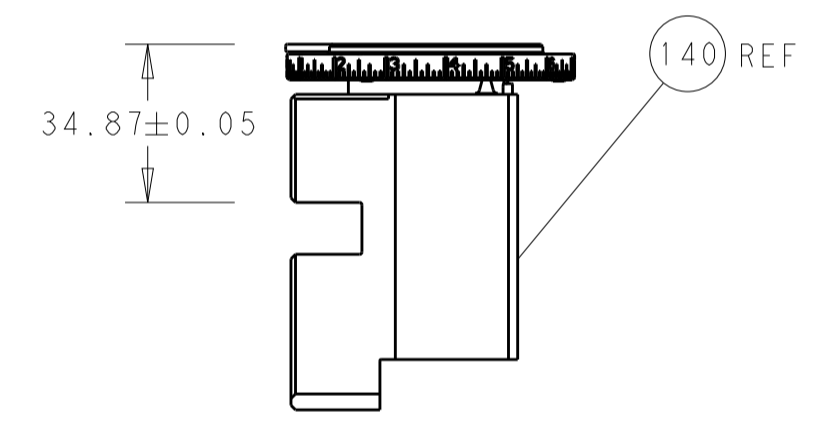
MECHANICAL PRE FEED



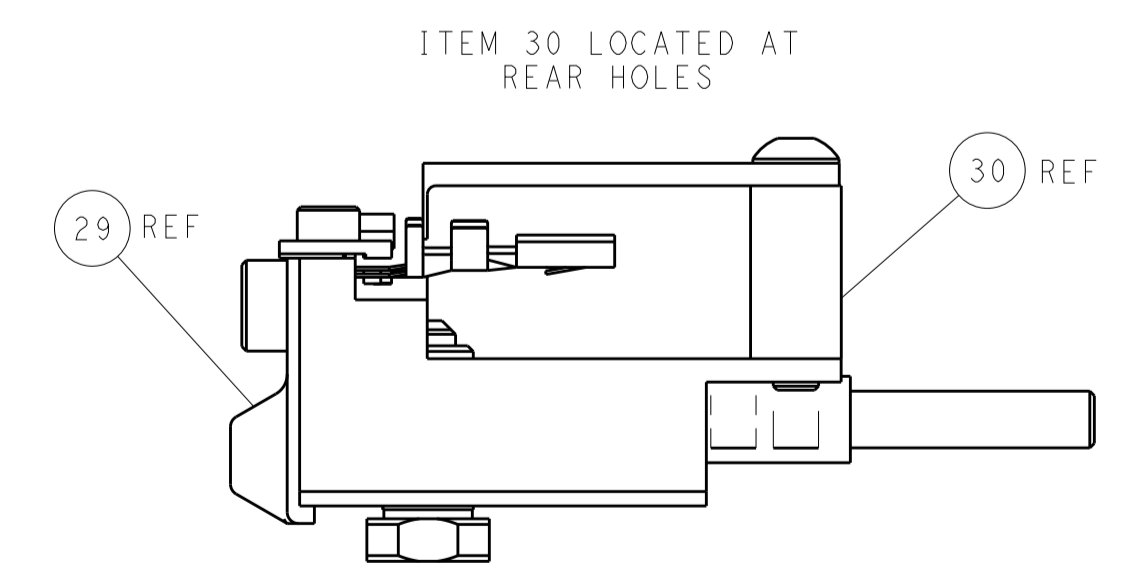
AIR FEED



TERMINAL SUPPORT LOCATION



RAM SET-UP



FEED TRACK POSITION GUIDE BY INSULATION BARREL

PACIFIC VERSION
 Shown on sheets 3 of 4 & 4 of 4
 (Atlantic version shown on sheets 1 of 4 & 2 of 4)

DIMENSIONS:		TOLERANCES UNLESS OTHERWISE SPECIFIED:		DWG: HOFFNER 20AUG2015		TE Connectivity	
mm	0 PLC ±	1 PLC ±	2 PLC ±	3 PLC ±	4 PLC ±	5 PLC ±	Harrisburg, PA 17105-3608
	ANGLES	FINISH		CHK: TELBIN 21AUG2015	NAME: TELBIN 21AUG2015	Ocean Side Feed Applicator	
MATERIAL:		WEIGHT:		APVD: TELBIN 21AUG2015	PRODUCT SPEC:	SIZE: A1	CAGE CODE: 00779
				APPLICATION SPEC:	RESTRICTED TO:	Customer Accessible Production Drawing	
				SCALE: 1:2	SHEET: 4	OF: 4	REV: F