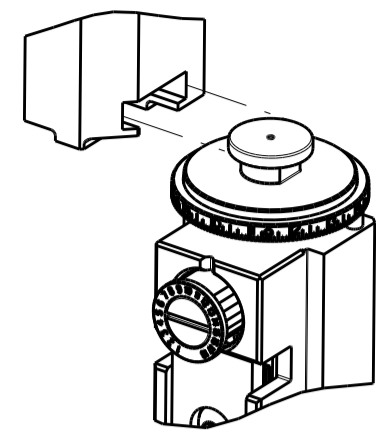


| PART NUMBER | REVISION | DESCRIPTION | FEED TYPE |
|-------------|----------|----------------------------------|------------|
| 2266941-1 | D | FINE CRIMP HEIGHT ADJUST | MECHANICAL |
| 2266941-2 | D | FINE CRIMP HEIGHT ADJUST | PNEUMATIC |
| 7-2266941-1 | D | MECHANICAL AND CRIMP TOOLING KIT | MECHANICAL |
| 7-2266941-2 | D | PNEUMATIC AND CRIMP TOOLING KIT | PNEUMATIC |
| 7-2266941-7 | A | CRIMP TOOLING KIT | - |

ATLANTIC VERSION TERMINATOR INTERFACE ADAPTER



| APPLICATOR DATA | | |
|-----------------|----------------|------|
| CRIMP | SIZE | TYPE |
| WIRE | 1.60 mm [.063] | F |
| INSUL | 2.00 mm [.079] | D |

APPLICATOR INSTRUCTIONS 408-35042

| TERMINAL DATA: KET TERMINAL | | KET CRIMP SPECIFICATION | |
|------------------------------------|------------------------|------------------------------|--------------|
| TERMINAL NAME: KET TERMINAL | | | |
| WIRE STRIP LENGTH | | INSULATION DIAMETER RANGE | |
| 4.00-4.50 mm [.157-.177 IN] | | Ø1.40-1.90 mm [.055-.075 IN] | |
| TERMINAL APPLICATION SPECIFICATION | SDL REC TERMINAL Rev 1 | | |
| TERMINALS APPLIED | | | |
| TE TERMINAL | KET TERMINAL | TE TERMINAL | KET TERMINAL |
| 2113749-1 | ST730497-3 | | |

| WIRE SIZE | CRIMP HEIGHT mm [INCH] | CRIMP HEIGHT REFERENCE SETTING |
|--------------------------|----------------------------|--------------------------------|
| AVSS 0.85mm ² | 1.20+/-0.05 [.047+/- .002] | 8.8 |
| AVSS 0.5mm ² | 1.10+/-0.05 [.043+/- .002] | 10.0 |
| AVSS 0.3mm ² | 1.00+/-0.05 [.039+/- .002] | 10.9 |

- RECOMMENDED SPARE PARTS
- REFER TO SUPPLIED INSTRUCTION SHEET FOR CLEANING, LUBRICATION AND STORAGE OF APPLICATOR.
- APPLY PART NUMBER 2-23419-6 LOCTITE TO THREADS OF ITEM 242.
- CRIMP HEIGHT REFERENCE SETTING WAS THE SETTING USED WHEN THE APPLICATOR WAS QUALIFIED AT THE FACTORY. ADJUSTMENT MAY BE NECESSARY WHEN RUNNING APPLICATOR IN THE FIELD.
- TERMINAL LUBRICANT IS RECOMMENDED.
- 6. UNLESS SPECIFIED OTHERWISE TORQUE VALUES SHALL BE USED PER DOCUMENT, 101-35000.

***WARNING**
ON INSTALLATION, SET WIRE DISC TO CRIMP HEIGHT REFERENCE SETTING FOR LARGEST WIRE SIZE. CRIMP HEIGHT REFERENCE SETTINGS GREATER THAN THE VALUE SHOWN MAY CAUSE DAMAGE TO THE CRIMP TOOLING. REFER TO THE INSTRUCTION SHEET FOR PROPER SETUP AND ADJUSTMENTS.

| LOC | DIST | REVISIONS | | | | | |
|-----|------|-----------|-----|---------------|-----------|-----|------|
| A | 66 | P | LTN | DESCRIPTION | DATE | OWN | APVD |
| | | B | | ECR-16-012435 | 30AUG2016 | MR | GB |
| | | C | | ECR-16-015420 | 01NOV2016 | YY | JDG |
| | | D | | ECR-18-016619 | 19OCT2018 | MS | TE |

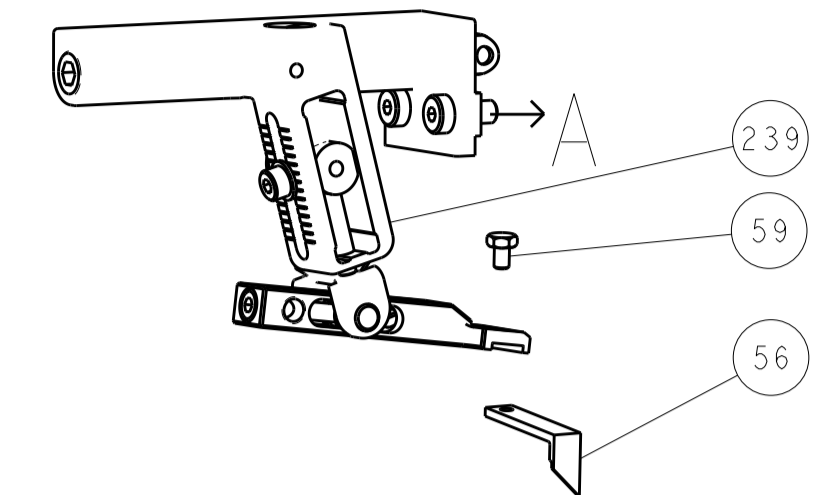
| | | | | | | | |
|---|-----|-----|-----|-----|-------------|-------------------------------------|---------|
| - | 1 | - | 1 | - | 2119640-1 | PUSH ROD, AIR FEED | 250 |
| - | 1 | - | 1 | - | 1803259-1 | BUSHING, FLANGED | 249 |
| - | 1 | - | 1 | - | 2119641-1 | FEED CAM, AIR FEED | 248 |
| - | 1 | 1 | 1 | 1 | 2119082-2 | CAM, SNAIL, INSULATION ADJUSTMENT | 244 |
| - | 1 | 1 | 1 | 1 | 2079764-1 | WASHER, WAVE SPRING, CREST-TO-CREST | 243 |
| - | 1 | 1 | 1 | 1 | 2119083-1 | RETAINER, INSULATION DIAL | 242 |
| - | 1 | 1 | 1 | 1 | 7-18023-7 | SCR, SKT HD CAP M3 X 4.0 | 241 |
| - | - | 1 | - | 1 | 2119580-1 | MECHANICAL FEED ASSEMBLY | 239 |
| - | 1 | - | 1 | - | 2063440-1 | AIR FEED MODULE | 238 |
| - | 2 | - | 2 | - | 21045-3 | RING, RETAIN, EXTERN, 3/16 CRESCENT | 172 |
| - | REF | REF | REF | REF | 994970-2 | COUNTER, MAGNETIC | 164 |
| - | 1 | - | 1 | - | 240638-1 | SPRING, FEED FINGER | 163 |
| - | 1 | - | 1 | - | 3-23627-7 | PIN, RETAIN, GRVD, 3/16 X .854 | 137 |
| - | 1 | - | 1 | - | 2119799-1 | HOLDER, FEED FINGER, AF | 136 |
| - | 1 | 1 | 1 | 1 | 2119955-1 | ASSY, LUBRICATOR, SIDE FEED | 113 |
| - | 1 | 1 | 1 | 1 | 2844908-1 | SCREW, LOCKING | 99 |
| - | 1 | 1 | 1 | 1 | 2844907-1 | POST, LOCKING | 98 |
| - | 1 | 1 | 1 | 1 | 455888-5 | SPACER, CRIMPER | 82 |
| - | 1 | 1 | 1 | 1 | 1803607-1 | DOCUMENTATION PACKAGE | 71 |
| - | 1 | 1 | 1 | 1 | 2119740-1 | TAG, IDENTIFICATION | 67 |
| - | 2 | 2 | 2 | 2 | 2168078-1 | SCREW, DRIVE, RH, RoHS, 2 x .188 | 66 |
| - | 1 | 1 | 1 | 1 | 2168083-2 | SCR, SKT HD CAP, RoHS, M4 X 8.0 | 60 |
| - | 1 | 1 | 1 | 1 | 5-18022-5 | SCR, HEX HD CAP, M4 X 6.0 | 59 |
| - | 1 | 1 | 1 | 1 | 1338683-8 | FEED PAWL | 56 |
| - | 4 | 4 | 4 | 4 | 2168083-3 | SCR, SKT HD CAP, RoHS, M4 X 12.0 | 54 |
| - | 2 | 2 | 2 | 2 | 1-2168083-0 | SCR, SKT HD CAP, RoHS, M4 X 10 | 53 |
| - | 1 | 1 | 1 | 1 | 5018030-1 | NUT, HEX, REG, RoHS, M3 | 52 |
| - | 1 | 1 | 1 | 1 | 811242-5 | BUMPER, HOLD DOWN | 51 |
| - | 1 | 1 | 1 | 1 | 690753-2 | SPACER, TONKER | 50 |
| - | 1 | 2 | 1 | 2 | 18023-9 | SCR, SKT HD CAP M4 X 6.0 | 49 |
| - | - | 1 | - | 1 | 2119652-1 | FEED CAM, PRE FEED | 48 |
| - | - | 1 | - | 1 | 2119653-1 | FEED CAM, POST FEED | 47 |
| - | 1 | 1 | 1 | 1 | 1803583-9 | APPLICATOR BASIC ASSEMBLY, SF | 46 |
| - | 1 | 1 | 1 | 1 | 1803515-1 | RAM ASSEMBLY, SF ATLANTIC | 44 |
| - | 1 | 1 | 1 | 1 | 1803602-1 | SCR, BHSC, RoHS (M8 X 25) | 41 |
| - | 1 | 1 | 1 | 1 | 1752356-3 | SUPPORT, TERMINAL | 34 |
| - | 2 | 2 | 2 | 2 | 2079383-5 | SCR, BHSC, RoHS (M4 X 20) | 33 |
| - | 2 | 2 | 2 | 2 | 2-2844962-8 | SPACER, CYLINDRICAL, STRIP GUIDE | 30 |
| - | 1 | 1 | 1 | 1 | 2844992-1 | ASSEMBLY, STRIP GUIDE | 29 |
| - | 1 | 1 | 1 | 1 | 1320928-2 | STRIP GUIDE | 24 |
| - | 1 | 1 | 1 | 1 | 2168083-2 | SCR, SKT HD CAP, RoHS, M4 X 8.0 | 21 |
| - | 2 | 2 | 2 | 2 | 1-18028-2 | WASHER, FLAT, REG M4 | 20 |
| - | 1 | 1 | 1 | 1 | 2119533-1 | STRIPPER, SIDE FEED | 19 |
| - | 1 | 1 | 1 | 1 | 2119806-1 | INSERT, SHEAR | 13 |
| - | 1 | 1 | 1 | 1 | 3-22280-3 | SPRING, COMPRESSION | 12 |
| - | 1 | 1 | 1 | 1 | 1-356885-4 | STOP, SHEAR | 11 |
| - | 1 | 1 | 1 | 1 | 2119805-1 | SHEAR HOLDER, FRONT | 10 |
| - | 1 | 1 | 1 | 1 | 1803095-3 | FLOATING SHEAR, FRONT | 9 |
| 1 | 2 | 2 | 1 | 1 | 5-1803057-2 | ANVIL, COMBINATION | 8 |
| - | - | - | - | - | - | - | 7 |
| - | - | - | - | - | - | - | 6 |
| - | 1 | 1 | 1 | 1 | 2119757-1 | DEPRESSOR, SHEAR | 5 |
| - | 1 | 1 | 1 | 1 | 3-238011-5 | BLOCK, CRIMPER SPACER | 4 |
| 1 | 2 | 2 | 1 | 1 | 1803253-3 | CRIMPER, INSULATION DELTA | 3 |
| - | 1 | 1 | 1 | 1 | 455888-8 | SPACER, CRIMPER | 2 |
| 1 | 2 | 2 | 1 | 1 | 8-1673600-5 | CRIMPER, WIRE | 1 |
| - | 77 | -72 | -71 | -2 | -1 | PART NO | ITEM NO |

ATLANTIC VERSION
Shown on sheets 1 of 4 & 2 of 4
(Pacific version shown on sheets 3 of 4 & 4 of 4)

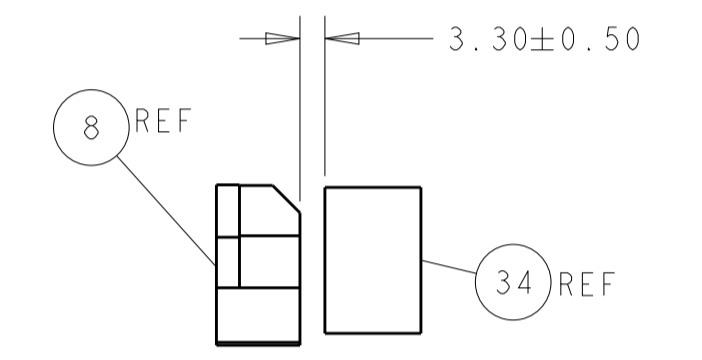
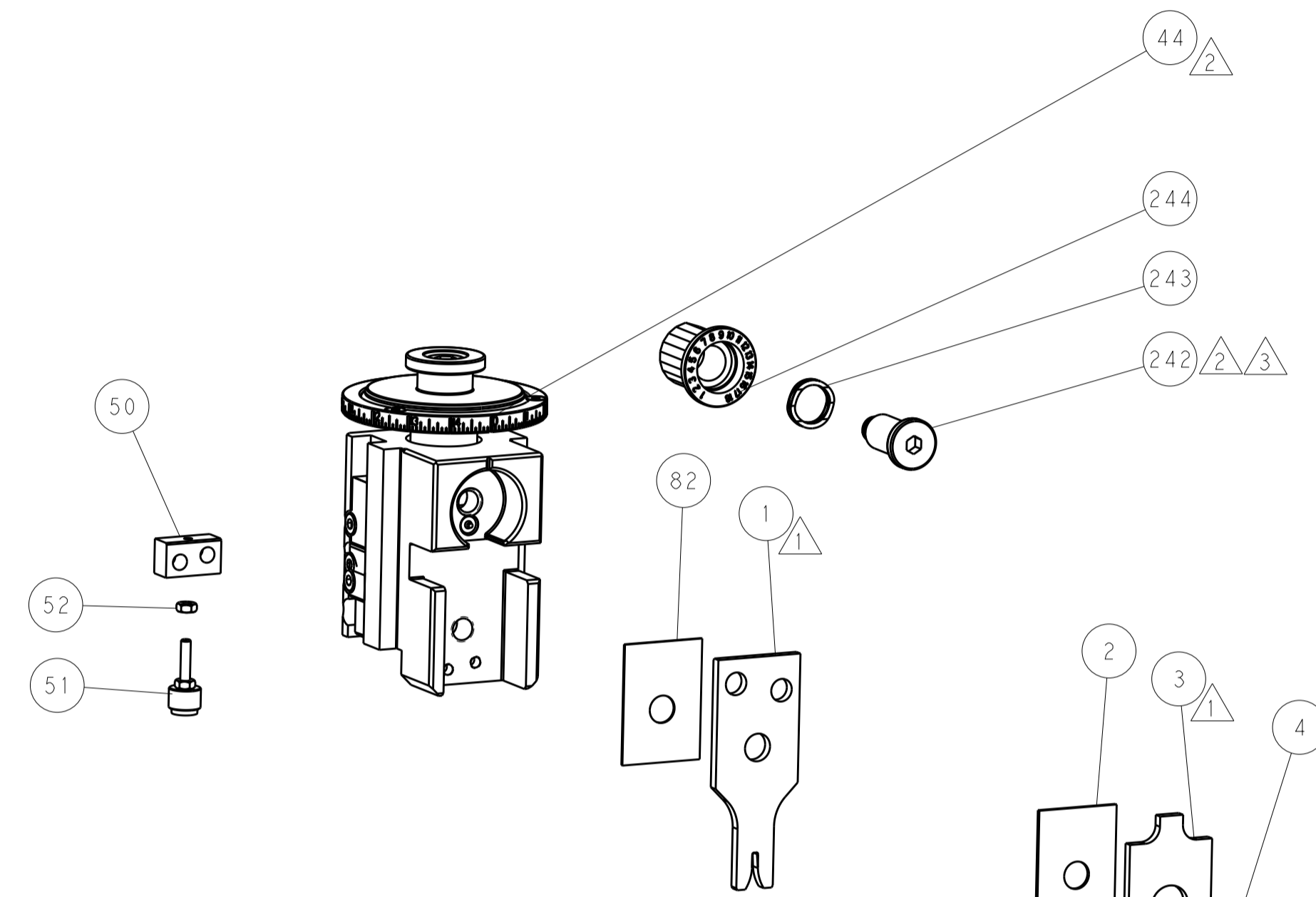
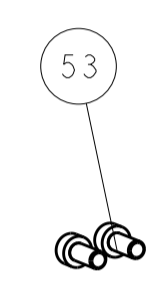
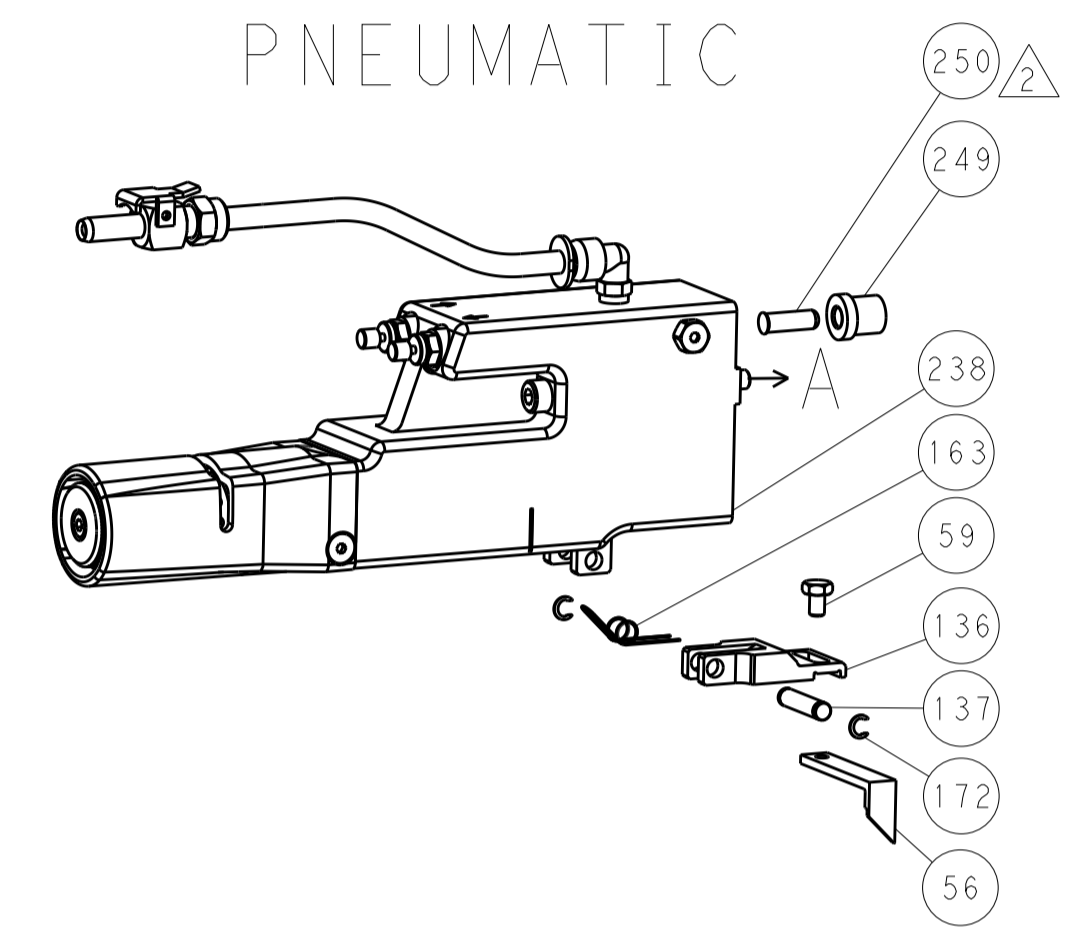
| DIMENSIONS: | | TOLERANCES UNLESS OTHERWISE SPECIFIED: | | MATERIAL: | | FINISH: | |
|----------------------------------------|---------|----------------------------------------|---------|--------------|---------|----------|----------|
| mm | 0 PLC ± | 1 PLC ± | 2 PLC ± | 3 PLC ± | 4 PLC ± | ANGLES ± | FINISH ± |
| MATERIAL: | | FINISH: | | WEIGHT: | | SCALE: | |
| Customer Accessible Production Drawing | | SCALE: 1:2 | | SHEET 1 OF 4 | | REV D | |

| LOC | DIST | REV | DATE | BY | APPV |
|-----|------|-----|------|----|------|
| A | 66 | | | | |
| | | | | | |
| | | | | | |

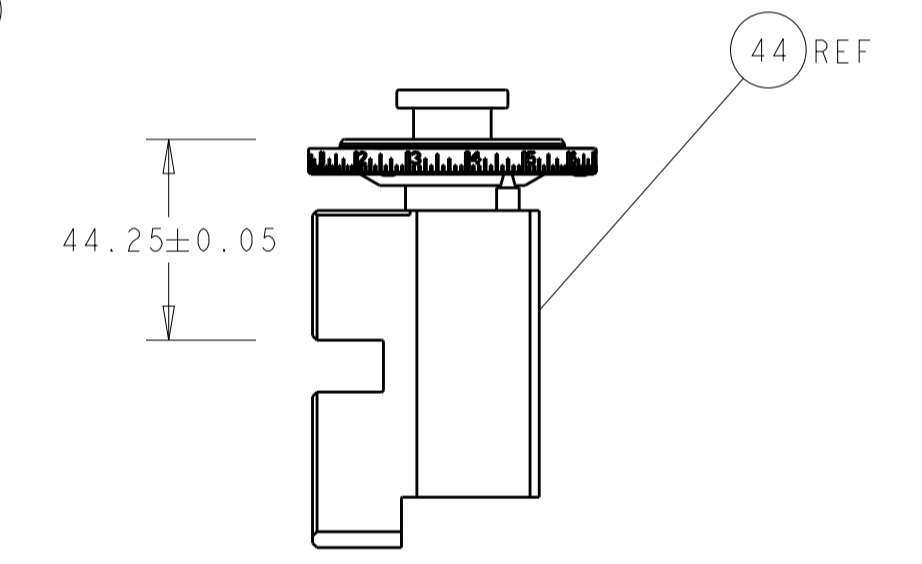
FEED TYPE MECHANICAL



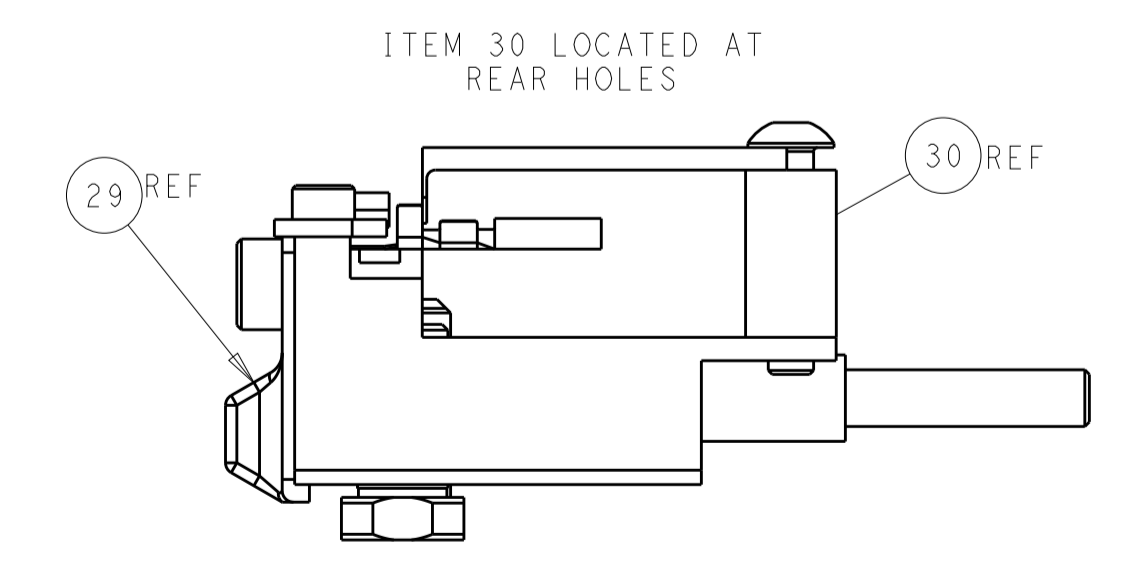
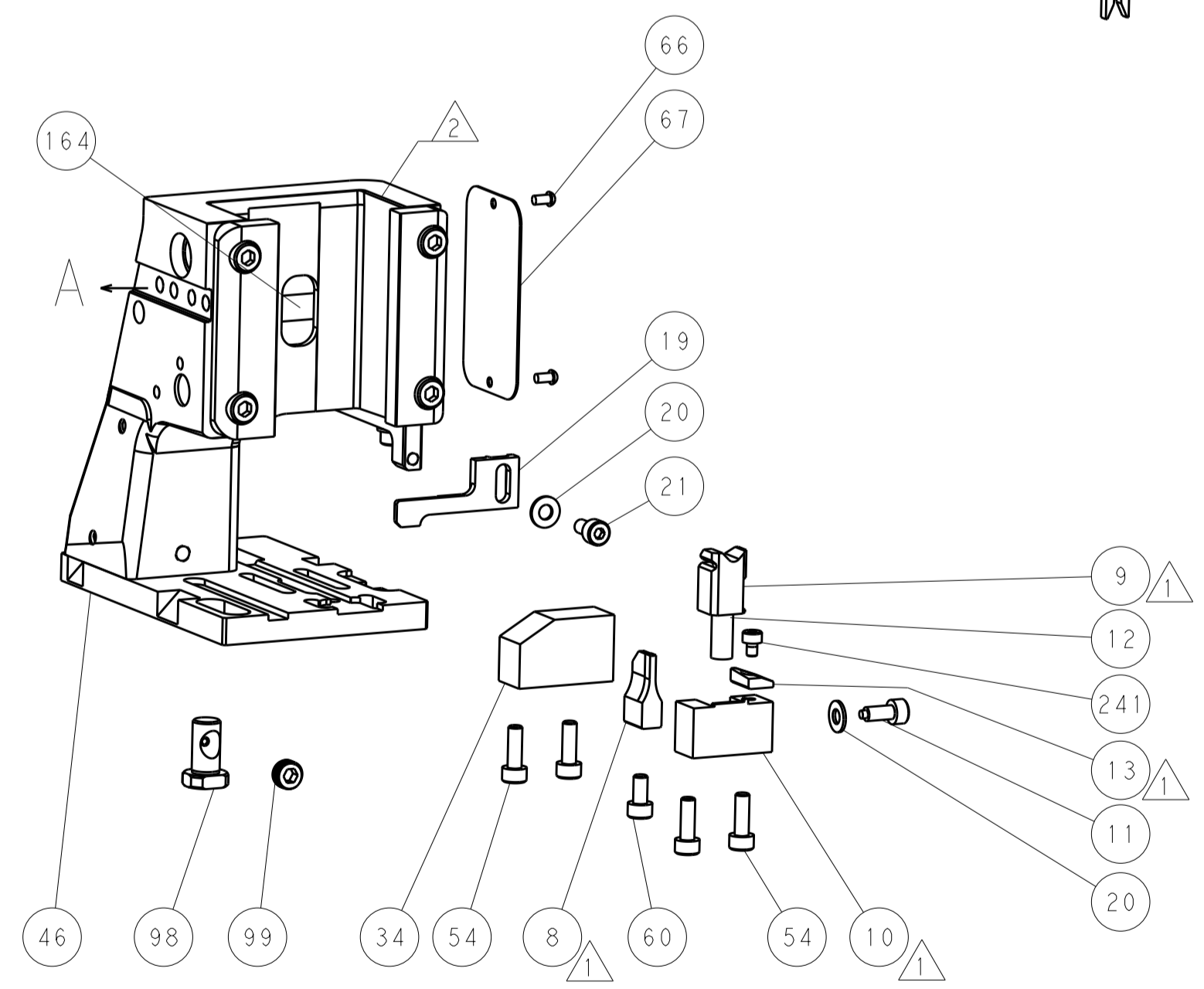
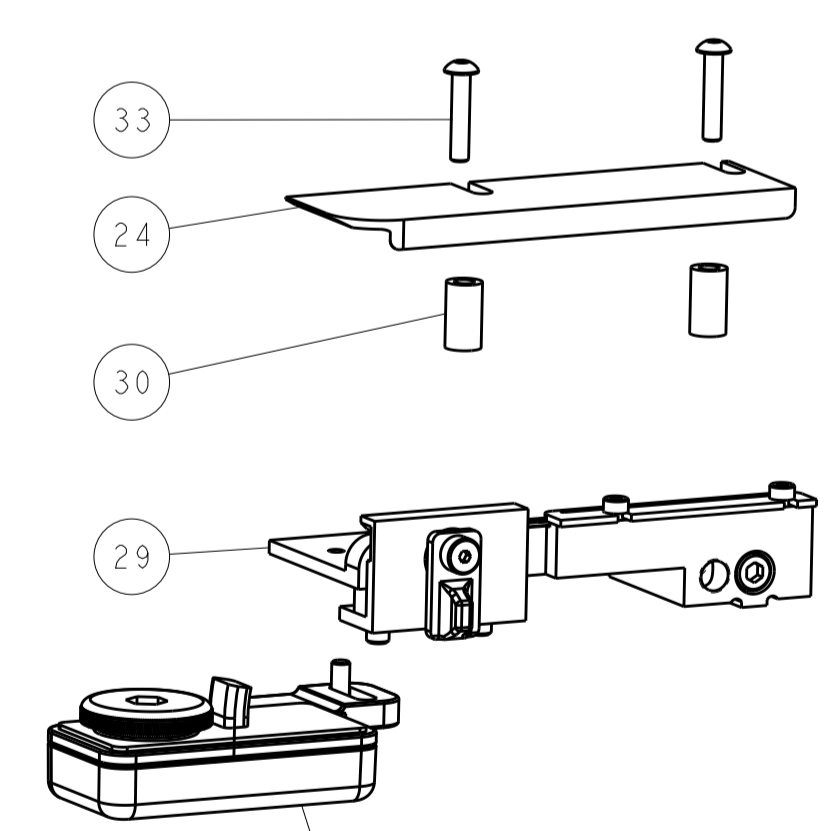
PNEUMATIC



TERMINAL SUPPORT LOCATION

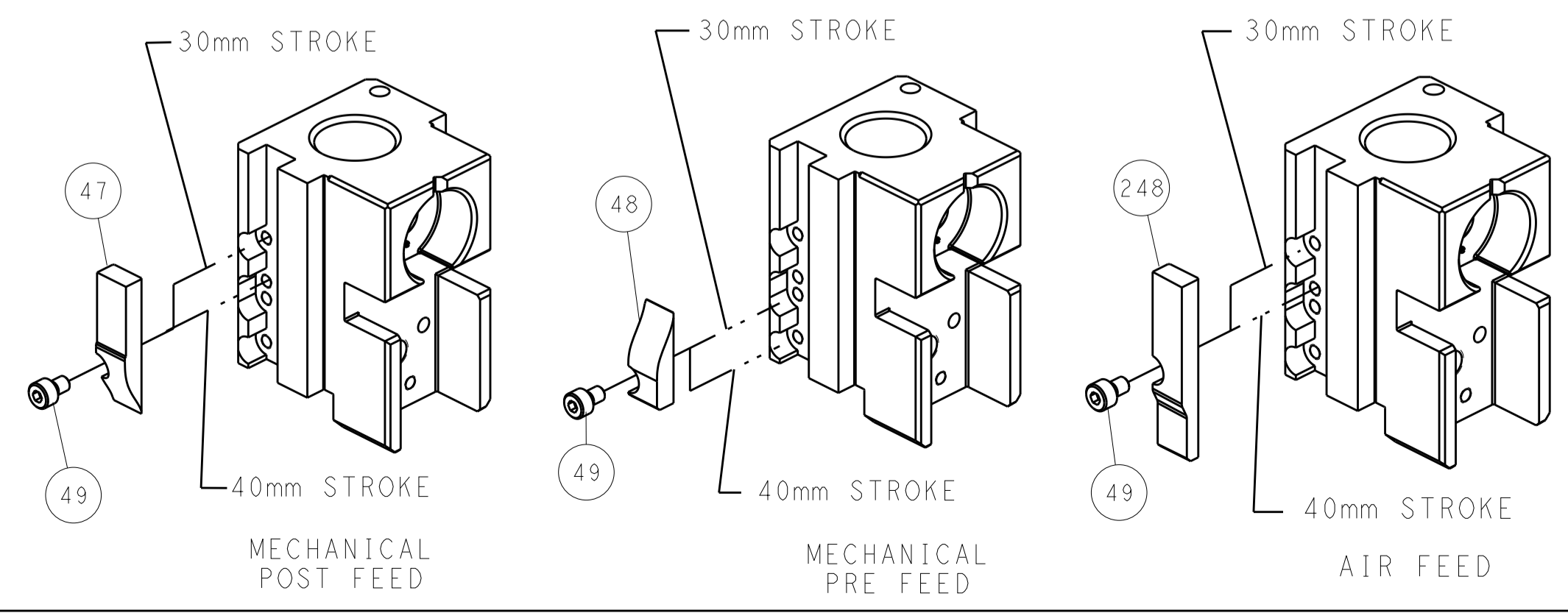


RAM SET-UP



FEED TRACK POSITION GUIDE BY INSULATION BARREL

CAM POSITIONS

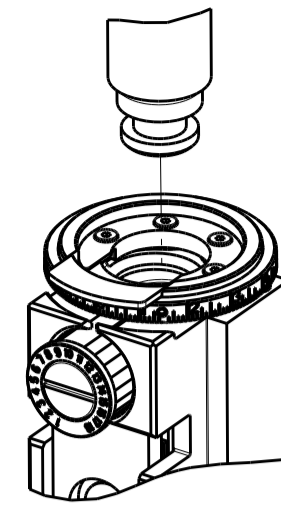


ATLANTIC VERSION
 Shown on sheets 1 of 4 & 2 of 4
 (Pacific version shown on sheets 3 of 4 & 4 of 4)

| | | | | | | | |
|----------------------------------------|---------|----------------------------------------|---------|--------------------------|---------|-------------------------------------------------|--|
| DIMENSIONS: | | TOLERANCES UNLESS OTHERWISE SPECIFIED: | | DWG: B. WEAVER 30JUL2015 | | TE Connectivity Harrisburg, PA 17105-3608 | |
| mm | 0 PLC ± | 1 PLC ± | 2 PLC ± | 3 PLC ± | 4 PLC ± | NAME: Ocean Side Feed Applicator | |
| MATERIAL: | | FINISH: | | APVD: T. ELBIN 30JUL2015 | | SIZE: CAGE CODE: DRAWING NO: A1 00779 ©=2266941 | |
| Customer Accessible Production Drawing | | SCALE: 1:2 | | SHEET 2 OF 4 | | REV D | |

| PART NUMBER | REVISION | DESCRIPTION | FEED TYPE |
|-------------|----------|--------------------------|------------|
| 2-2266941-1 | D | FINE CRIMP HEIGHT ADJUST | MECHANICAL |
| 2-2266941-2 | D | FINE CRIMP HEIGHT ADJUST | PNEUMATIC |
| 7-2266941-7 | A | CRIMP TOOLING KIT | - |

PACIFIC VERSION TERMINATOR
INTERFACE ADAPTER



| APPLICATOR DATA | | |
|-----------------|----------------|------|
| CRIMP | SIZE | TYPE |
| WIRE | 1.60 mm [.063] | F |
| INSUL | 2.00 mm [.079] | D |

APPLICATOR INSTRUCTIONS
408-35042

| TERMINAL DATA: KET TERMINAL | | KET CRIMP SPECIFICATION | |
|------------------------------------|------------------------|-----------------------------|--------------|
| TERMINAL NAME: KET TERMINAL | | | |
| WIRE STRIP LENGTH | | INSULATION DIAMETER RANGE | |
| 4.00-4.50 mm [.157-.177 IN] | | 1.40-1.90 mm [.055-.075 IN] | |
| TERMINAL APPLICATION SPECIFICATION | SDL REC TERMINAL Rev 1 | | |
| TERMINALS APPLIED | | | |
| TE TERMINAL | KET TERMINAL | TE TERMINAL | KET TERMINAL |
| 2113749-1 | ST730497-3 | | |

| WIRE SIZE | CRIMP HEIGHT mm [INCH] | CRIMP HEIGHT REFERENCE SETTING |
|--------------------------|-------------------------------|--------------------------------|
| AVSS 0.85mm ² | 1.20 +/- 0.05 [.047 +/- .002] | 8.8 |
| AVSS 0.5mm ² | 1.10 +/- 0.05 [.043 +/- .002] | 10.0 |
| AVSS 0.3mm ² | 1.00 +/- 0.05 [.039 +/- .002] | 10.9 |

***WARNING**
ON INSTALLATION, SET WIRE DISC TO CRIMP HEIGHT REFERENCE SETTING FOR LARGEST WIRE SIZE. CRIMP HEIGHT REFERENCE SETTINGS GREATER THAN THE VALUE SHOWN MAY CAUSE DAMAGE TO THE CRIMP TOOLING, REFER TO THE INSTRUCTION SHEET FOR PROPER SETUP AND ADJUSTMENTS.

- RECOMMENDED SPARE PARTS
- REFER TO SUPPLIED INSTRUCTION SHEET FOR CLEANING, LUBRICATION AND STORAGE OF APPLICATOR.
- APPLY PART NUMBER 2-23419-6 LOCTITE TO THREADS OF ITEM 242.
- CRIMP HEIGHT REFERENCE SETTING WAS THE SETTING USED WHEN THE APPLICATOR WAS QUALIFIED AT THE FACTORY. ADJUSTMENT MAY BE NECESSARY WHEN RUNNING APPLICATOR IN THE FIELD.
- TERMINAL LUBRICANT IS RECOMMENDED.
- UNLESS SPECIFIED OTHERWISE TORQUE VALUES SHALL BE USED PER DOCUMENT, 101-35000.

| LOC | DIST | REV | DATE | BY | APPV |
|-----|------|-----|------|----|------|
| A | 66 | | | | |

| REV | DATE | BY | APPV | DESCRIPTION | ITEM NO | |
|-----|------|-----|------|-------------|-------------------------------------|-----|
| - | 1 | - | | 2119640-1 | PUSH ROD, AIR FEED | 250 |
| - | 1 | - | | 1803259-1 | BUSHING, FLANGED | 249 |
| - | 1 | 1 | | 2119082-2 | CAM, SNAIL, INSULATION ADJUSTMENT | 244 |
| - | 1 | 1 | | 2079764-1 | WASHER, WAVE SPRING, CREST-TO-CREST | 243 |
| - | 1 | 1 | | 2119083-1 | RETAINER, INSULATION DIAL | 242 |
| - | 1 | 1 | | 7-18023-7 | SCR, SKT HD CAP M3 X 4.0 | 241 |
| - | - | 1 | | 2119580-1 | MECHANICAL FEED ASSEMBLY | 239 |
| - | 1 | - | | 2063440-1 | AIR FEED MODULE | 238 |
| - | 2 | - | | 21045-3 | RING, RETAIN, EXTERN, 3/16 CRESCENT | 172 |
| - | REF | REF | | 994970-2 | COUNTER, MAGNETIC | 164 |
| - | 1 | - | | 240638-1 | SPRING, FEED FINGER | 163 |
| - | 1 | - | | 2119641-2 | FEED CAM, AIR FEED | 151 |
| - | 1 | 1 | | 2168083-8 | SCR, SKT HD CAP, RoHS, M4 X 16 | 144 |
| - | 4 | 4 | | 2168083-9 | SCR, SKT HD CAP, RoHS, M4 X 20 | 143 |
| - | - | 1 | | 2119653-2 | FEED CAM, POST FEED | 142 |
| - | 1 | 1 | | 1-1803583-0 | APPLICATOR BASIC ASSEMBLY, SF | 141 |
| - | 1 | 1 | | 1803516-1 | RAM ASSEMBLY, SF PACIFIC | 140 |
| - | 1 | - | | 3-23627-7 | PIN, RETAIN, GRVD, 3/16 X .854 | 137 |
| - | 1 | - | | 2119799-1 | HOLDER, FEED FINGER, AF | 136 |
| - | 1 | 1 | | 2119955-1 | ASSY, LUBRICATOR, SIDE FEED | 113 |
| - | 1 | 1 | | 2844908-1 | SCREW, LOCKING | 99 |
| - | 1 | 1 | | 2844907-1 | POST, LOCKING | 98 |
| - | 1 | 1 | | 455888-5 | SPACER, CRIMPER | 82 |
| - | 1 | 1 | | 1803607-1 | DOCUMENTATION PACKAGE | 71 |
| - | 1 | 1 | | 2119740-1 | TAG, IDENTIFICATION | 67 |
| - | 2 | 2 | | 2168078-1 | SCREW, DRIVE, RH, RoHS, 2 x .188 | 66 |
| - | 1 | 1 | | 5-18022-5 | SCR, HEX HD CAP, M4 X 6.0 | 59 |
| - | 1 | 1 | | 1338683-8 | FEED PAWL | 56 |
| - | 2 | 2 | | 1-2168083-0 | SCR, SKT HD CAP, RoHS, M4 X 10 | 53 |
| - | 1 | 1 | | 5018030-1 | NUT, HEX, REG, RoHS, M3 | 52 |
| - | 1 | 1 | | 811242-5 | BUMPER, HOLD DOWN | 51 |
| - | 1 | 1 | | 690753-2 | SPACER, TONKER | 50 |
| - | 1 | 2 | | 18023-9 | SCR, SKT HD CAP M4 X 6.0 | 49 |
| - | - | 1 | | 2119652-1 | FEED CAM, PRE FEED | 48 |
| - | 1 | 1 | | 1803602-1 | SCR, BHSC, RoHS (M8 X 25) | 41 |
| - | 1 | 1 | | 1752356-3 | SUPPORT, TERMINAL | 34 |
| - | 2 | 2 | | 2079383-5 | SCR, BHSC, RoHS (M4 X 20) | 33 |
| - | 2 | 2 | | 2-2844962-8 | SPACER, CYLINDRICAL, STRIP GUIDE | 30 |
| - | 1 | 1 | | 2844992-1 | ASSEMBLY, STRIP GUIDE | 29 |
| - | 1 | 1 | | 1320928-2 | STRIP GUIDE | 24 |
| - | 1 | 1 | | 2168083-2 | SCR, SKT HD CAP, RoHS, M4 X 8.0 | 21 |
| - | 2 | 2 | | 1-18028-2 | WASHER, FLAT, REG M4 | 20 |
| - | 1 | 1 | | 2119533-1 | STRIPPER, SIDE FEED | 19 |
| - | 1 | 1 | | 2119806-1 | INSERT, SHEAR | 13 |
| - | 1 | 1 | | 3-22280-3 | SPRING, COMPRESSION | 12 |
| - | 1 | 1 | | 1-356885-4 | STOP, SHEAR | 11 |
| - | 1 | 1 | | 2119805-1 | SHEAR HOLDER, FRONT | 10 |
| - | 1 | 1 | | 1803095-3 | FLOATING SHEAR, FRONT | 9 |
| - | 1 | 1 | | 5-1803057-2 | ANVIL, COMBINATION | 8 |
| - | - | - | | - | - | 7 |
| - | - | - | | - | - | 6 |
| - | 1 | 1 | | 2119757-1 | DEPRESSOR, SHEAR | 5 |
| - | 1 | 1 | | 3-238011-5 | BLOCK, CRIMPER SPACER | 4 |
| - | 1 | 1 | | 1803253-3 | CRIMPER, INSULATION DELTA | 3 |
| - | 1 | 1 | | 455888-8 | SPACER, CRIMPER | 2 |
| - | 1 | 1 | | 8-1673600-5 | CRIMPER, WIRE | 1 |

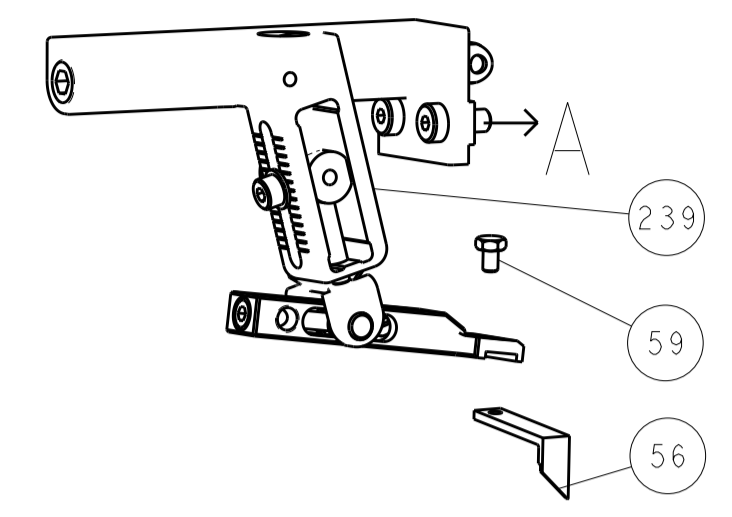
PACIFIC VERSION
Shown on sheets 3 of 4 & 4 of 4
(Atlantic version shown on sheets 1 of 4 & 2 of 4)

| DIMENSIONS: | | TOLERANCES UNLESS OTHERWISE SPECIFIED: | | DRAWING NO | |
|-------------|----------|----------------------------------------|---------|------------|---------|
| mm | 0 PLC ± | 1 PLC ± | 2 PLC ± | 3 PLC ± | 4 PLC ± |
| | ANGLES ± | FINISH ± | | | |
| MATERIAL | | WEIGHT | | SCALE | |

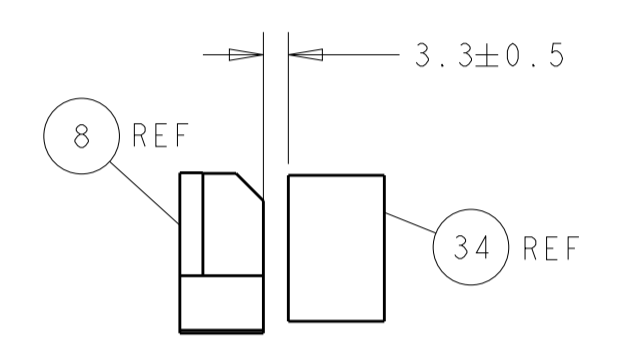
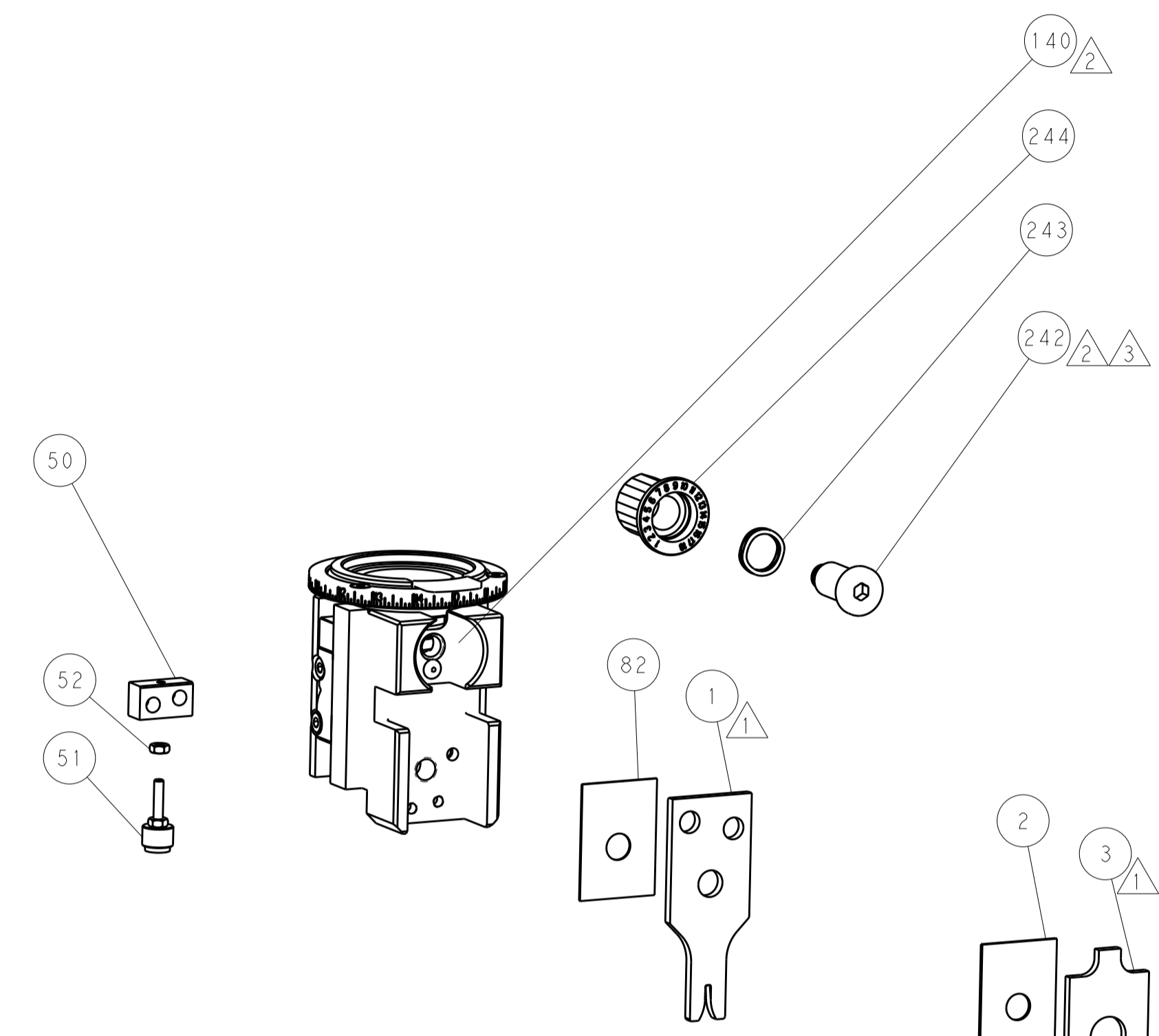
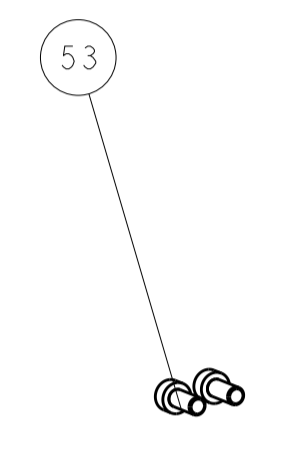
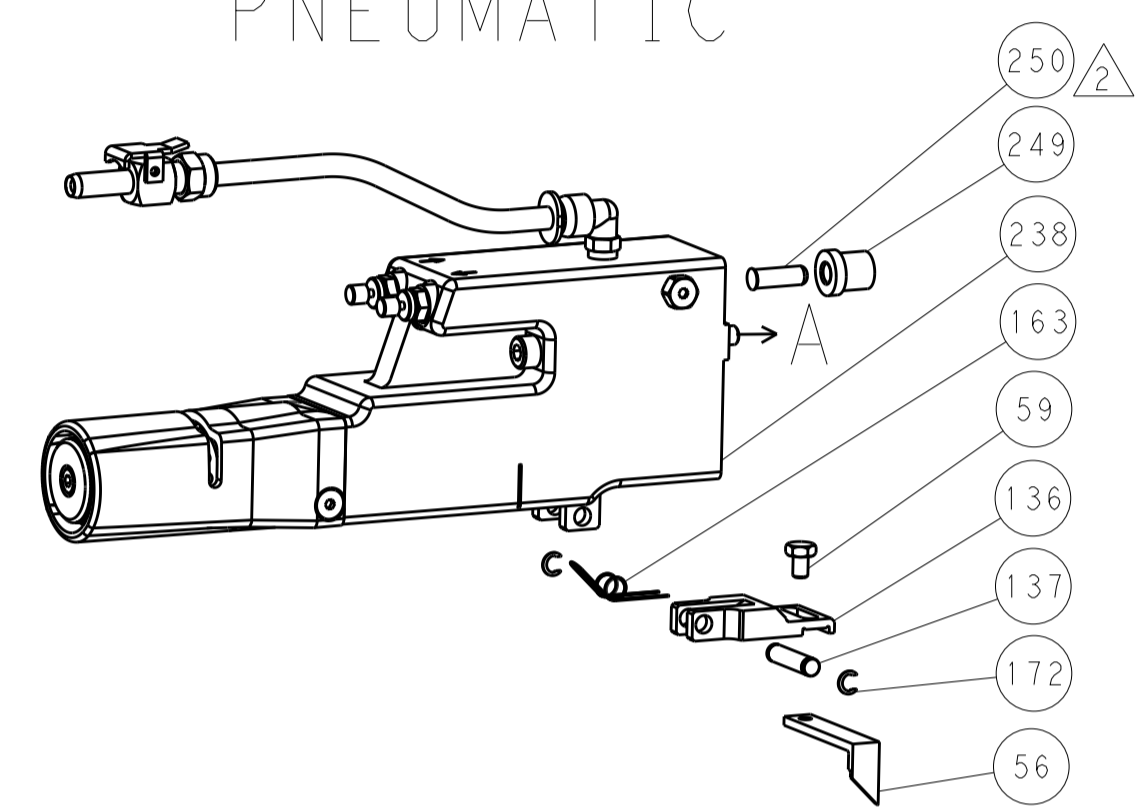
| | | |
|----------------------------------------|-------------|----------------------------------------------|
| OWN | 30 JUL 2015 | TE Connectivity Harrisburg, PA 17105-3608 |
| CHK | 30 JUL 2015 | |
| APPV | 30 JUL 2015 | NAME |
| PRODUCT SPEC | | Ocean Side Feed Applicator |
| APPLICATION SPEC | | SIZE |
| RESTRICTED TO | | CAGE CODE |
| Customer Accessible Production Drawing | SCALE 1:2 | SHEET 3 OF 4 |

| LOC | DIST | REVISIONS | | | | | |
|-----|------|-----------|-----|-------------|------|-----|------|
| | | P | LTN | DESCRIPTION | DATE | DWN | APVD |
| A | 66 | - | - | SEE SHEET 1 | - | - | - |

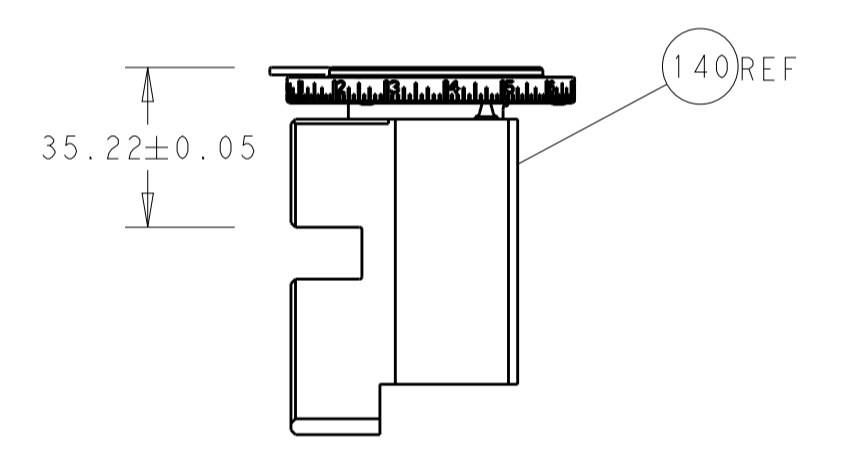
FEED TYPE MECHANICAL



PNEUMATIC

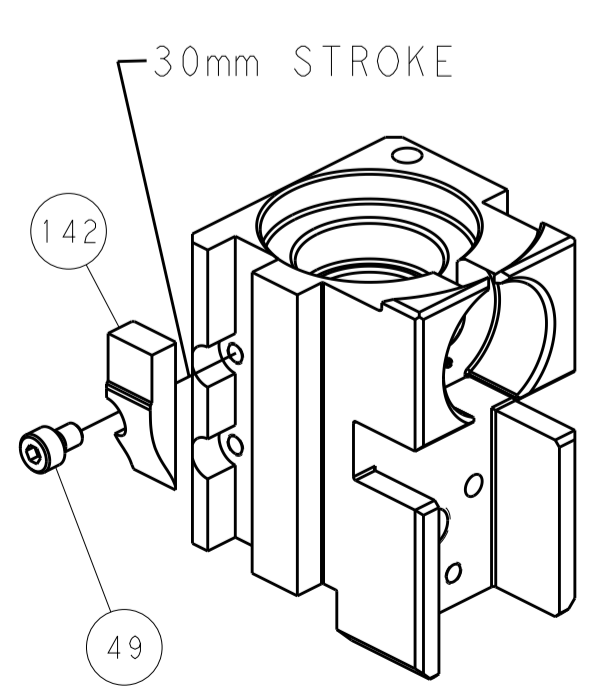


TERMINAL SUPPORT LOCATION

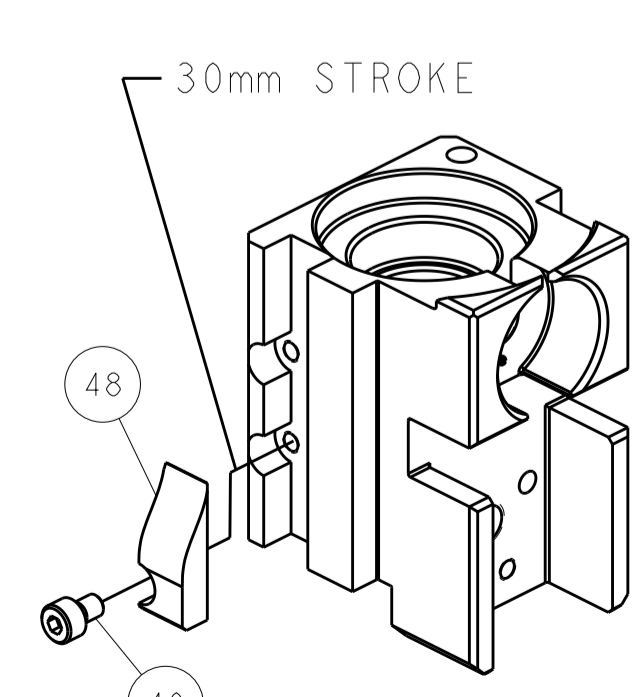


RAM SET-UP

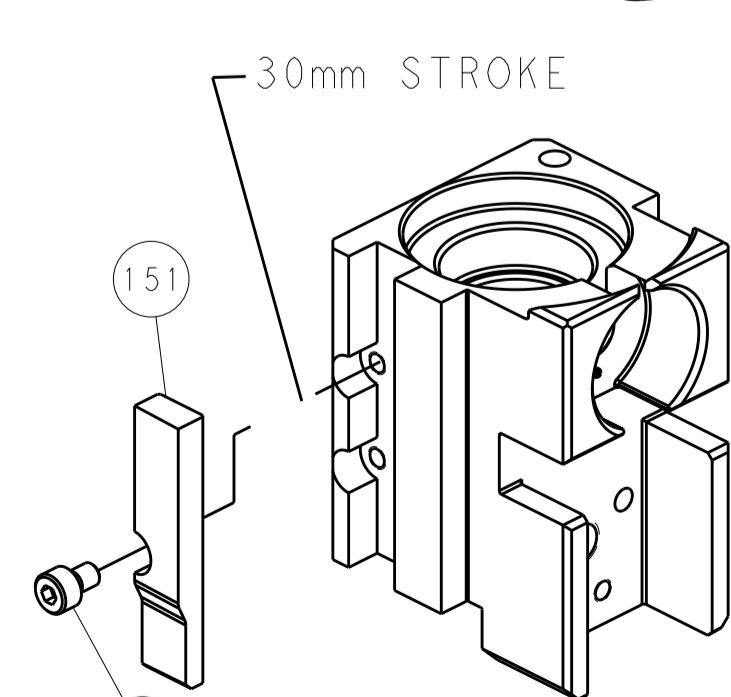
CAM POSITIONS



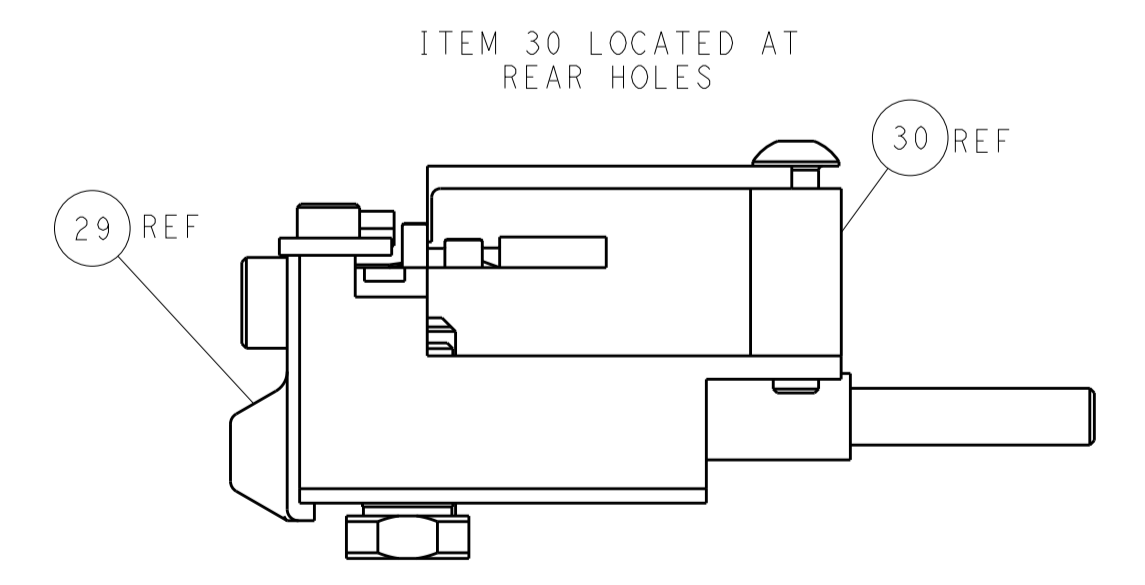
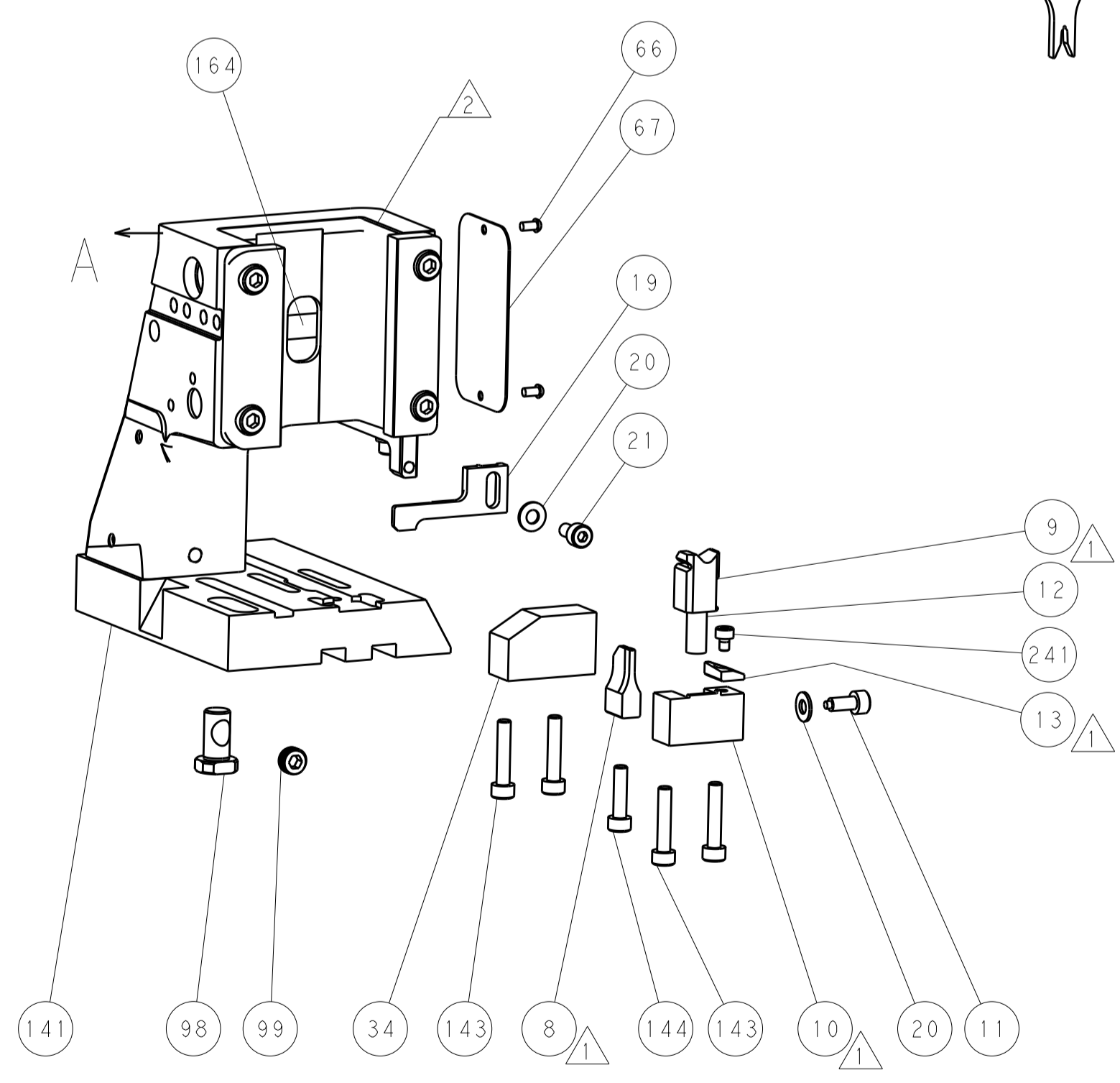
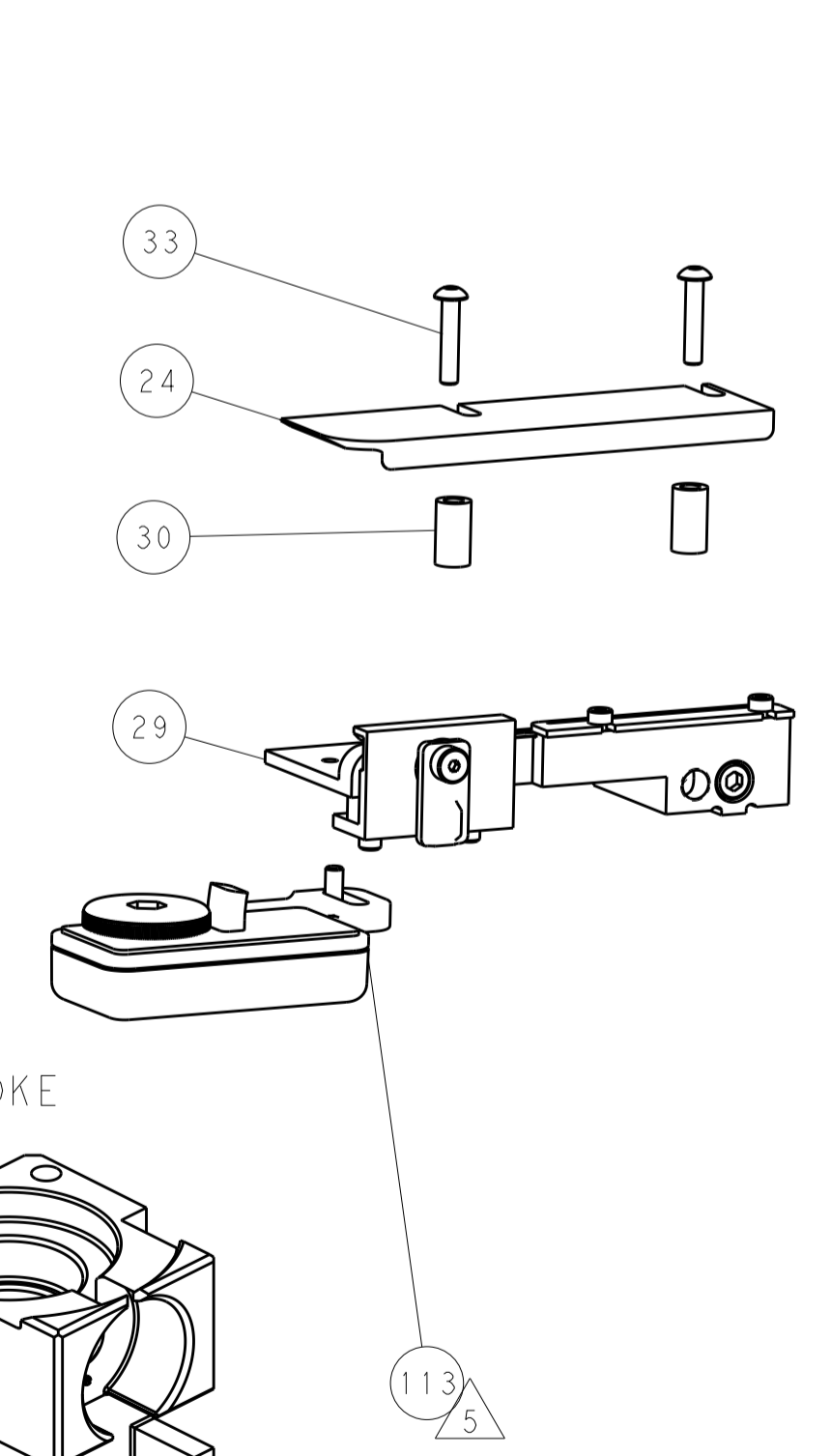
MECHANICAL
POST FEED



MECHANICAL
PRE FEED



AIR FEED



FEED TRACK POSITION
GUIDE BY INSULATION BARREL

PACIFIC VERSION
 Shown on sheets 3 of 4 & 4 of 4
 (Atlantic version shown on sheets 1 of 4 & 2 of 4)

| | | | | | | | |
|-------------|---------|----------------------------------------|---------|--------------------------|---------|---------------------------------------------------|--|
| DIMENSIONS: | | TOLERANCES UNLESS OTHERWISE SPECIFIED: | | DWN: B. WEAVER 30JUL2015 | | TE Connectivity | |
| mm | 0 PLC ± | 1 PLC ± | 2 PLC ± | 3 PLC ± | 4 PLC ± | Harrisburg, PA 17105-3608 | |
| MATERIAL: | | FINISH: | | CHK: T. ELBIN 30JUL2015 | | NAME: Ocean Side Feed Applicator | |
| | | | | APVD: T. ELBIN 30JUL2015 | | SIZE: CAGE CODE: DRAWING NO: A1 00779 ©=2266941 | |
| | | | | PRODUCT SPEC: | | RESTRICTED TO: | |
| | | | | APPLICATION SPEC: | | Customer Accessible Production Drawing | |
| | | | | WEIGHT: | | SCALE: 1:2 SHEET 4 OF 4 REV D | |
| | | | | ANGLES: | | SHEETS 1 & 2 ARE NOT REQUIRED FOR PACIFIC VERSION | |