

ATLANTIC VERSION TERMINATOR INTERFACE ADAPTER	PART NUMBER	REVISION	DESCRIPTION	FEED TYPE	APPLICATOR STYLE CONVERSION CHART						
					CONVERT TO	PART NUMBERS REQUIRED					
	2266914-2	B	FINE CRIMP HEIGHT ADJUST	PNEUMATIC	-	-	-	-	-	-	
	2266914-5	B	FINE CRIMP HEIGHT ADJUST	SERVO LATCH PLATE Δ 4	SERVO LATCH PLATE	2119951-1	-	8-2266914-5	1901094-3	-	2168400-6 (QUANTITY 2)
					SMART APPLICATOR	2161326-1	-	8-2266914-4	-	-	
	2266914-6	B	NON-CRIMP HEIGHT ADJUST	Δ 4 SERVO LATCH PLATE Δ 2	PNEUMATIC FEED	2119950-1	1338685-1	5-18022-5	2119641-1	2119799-1	2063440-2
					-	-	-	-	-	-	
	2266914-7	B	FINE CRIMP HEIGHT ADJUST	NONE	-	-	-	-	-	-	-
	7-2266914-7	B	CRIMP TOOLING KIT	-	-	-	-	-	-	-	-

APPLICATOR DATA		
CRIMP	SIZE	TYPE
WIRE	3.30 mm [.130]	F
INSUL	4.32 mm [.170]	OV

APPLICATOR INSTRUCTIONS
408-10389

TERMINAL DATA: KET TERMINAL		TE CRIMP SPECIFICATION	
TERMINAL NAME: .312 II TAB TERMINAL			
WIRE STRIP LENGTH		INSULATION DIAMETER RANGE	
4.50-5.50 mm [.177-.217 IN]		\varnothing 2.92-3.90 mm [.115-.154 IN]	
TERMINAL APPLICATION SPECIFICATION	NONE		
TERMINALS APPLIED Δ 10			
TE TERMINAL	KET TERMINAL	TE TERMINAL	KET TERMINAL
2113793-1	ST740600-3		

WIRE SIZE	CRIMP HEIGHT mm [INCH]	CRIMP HEIGHT REFERENCE SETTING
12 AWG	2.20+/-0.05 [.087+/- .002]	6.3
3.00mm2	2.14+/-0.05 [.084+/- .002]	6.9
14 AWG	1.90+/-0.05 [.075+/- .002]	9.3
2.00mm2	1.89+/-0.05 [.074+/- .002]	9.4

- Δ RECOMMENDED SPARE PARTS
- Δ GREASE BEARING SURFACES LIGHTLY
- 3. LUBRICATE DAILY PER THE APPLICATOR INSTRUCTION SHEET SUPPLIED WITH THE APPLICATOR.
- Δ APPLICATOR SPECIFIC DATA TO BE ENTERED INTO BLANK MEMORY CHIP AT ASSEMBLY. SEE BELOW FOR PART NUMBER:
 PNEUMATIC FEED WITH "SMART APPLICATOR" CONVERSION: 8-2266914-4
 SERVO FEED WITH "FINE CRIMP HEIGHT ADJUST": 8-2266914-5
 SERVO FEED WITH "NON-CRIMP HEIGHT ADJUST": 8-2266914-6
- 5. ADJUSTMENT OF THE STRIPPER MAY BE REQUIRED WHEN MOVING THE APPLICATOR BETWEEN BENCH AND LEADMAKER APPLICATIONS.
- Δ APPLY PART NUMBER 1-23419-5 LOCTITE TO THREADS OF ITEMS 62. APPLY PART NUMBER 2-23419-6 LOCTITE TO THREADS OF ITEMS 242. FOR -6 ONLY APPLY PART NUMBER 1-23419-5 LOCTITE TO THREADS OF ITEM 37.
- Δ GREASE THREADS, GROOVE AND O-RING ON ITEMS 35 & 252.
- Δ MAGNET, ITEM 166 MUST BE ORIENTED CORRECTLY IN ORDER TO PROPERLY ACTUATE THE COUNTER.
- Δ CRIMP HEIGHT REFERENCE SETTING WAS THE SETTING USED WHEN THE APPLICATOR WAS QUALIFIED AT THE FACTORY. ADJUSTMENT MAY BE NECESSARY WHEN RUNNING APPLICATOR IN THE FIELD.
- Δ TERMINAL PITCH NOT COMPATIBLE WITH MECHANICAL FEED.
- Δ 1 TO CONVERT THE APPLICATOR TO A NON-CARRIER CUTTING STYLE, REMOVE ITEM 13 AND ATTACH TO THE LOCATION ON THE BACK SIDE OF THE HOUSING. REFER TO INSTRUCTION SHEET FOR ADDITIONAL INFORMATION.
- Δ 12 WHEN ASSEMBLING A NON CRIMP HEIGHT ADJUST APPLICATOR (-6) USE SHIMS FROM ITEM 260 TO ACHIEVE A NOMINAL SHIM HEIGHT OF 3.6.

***WARNING**
 ON INSTALLATION, SET WIRE DISC, ITEM 40 TO LARGEST WIRE SIZE SETTING. USE OF SETTINGS BELOW MINIMUM REQUIRED CRIMP HEIGHT SETTING WILL CAUSE DAMAGE TO CRIMP TOOLING.

- 2 2 2 2	2168083-1	SCR, SKT HD CAP, RoHS, M3 X 8.0	269
- 1 1 1 1	1633782-3	FENCE	267
- - 1 - -	2119957-2	APPLICATOR SHIM PACK	260
- 1 - 1 1	8-21084-0	O-RING, .676 ID, .070 DIA. MAT.	252
-77 -7 -6 -5 -2	PART NO	DESCRIPTION	ITEM NO

ATLANTIC VERSION
 Shown on sheets 1 of 4 & 2 of 4
 (Pacific version shown on sheets 3 of 4 & 4 of 4)

SET UP GAUGE		LOC	DIST	REVISIONS			
2119599-1		A	66	P	DATE	OWN	APVD
		A		RELEASED	26AUG2015	KH	TE
		B		ECR-16-010617	25JUL2016	KH	JDG

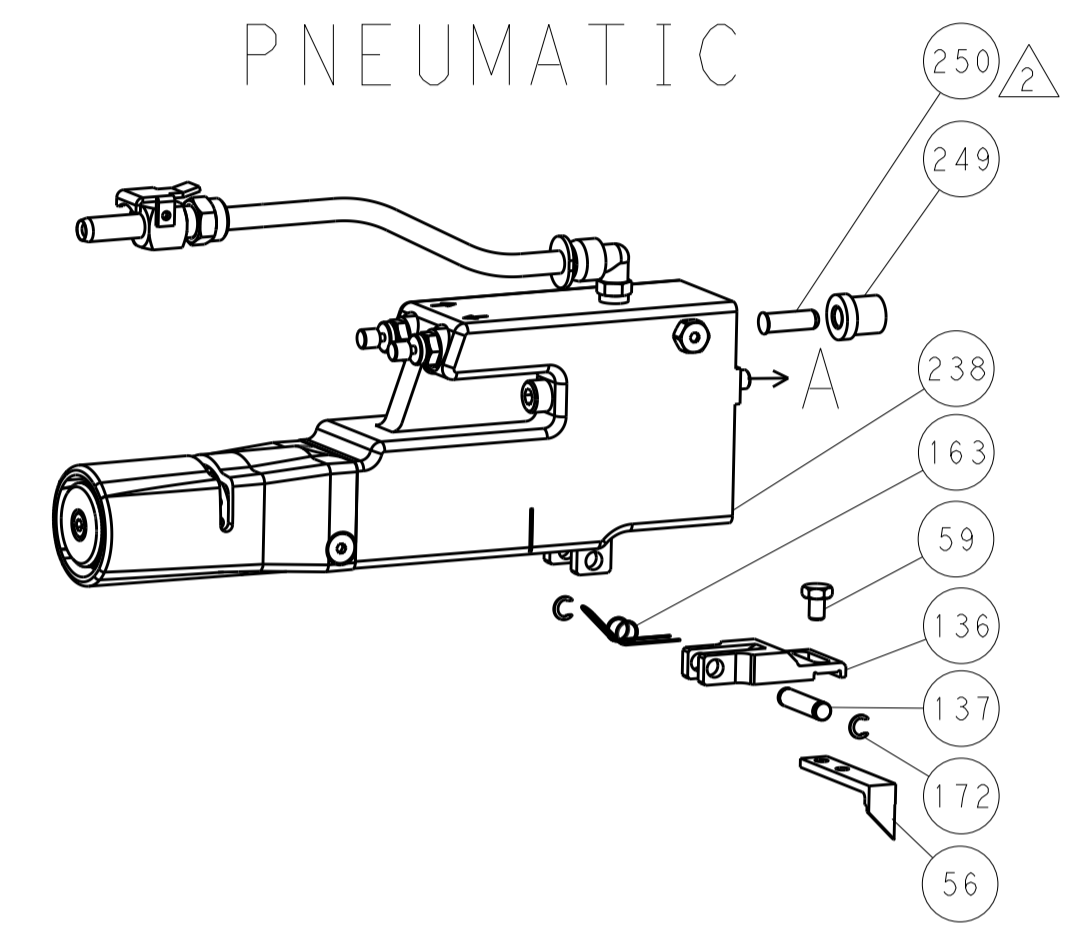
- - - - 1	2119640-1	PUSH ROD, AIR FEED	250
- - - - 1	2079988-1	BUSHING, LCH5-12, MISUMI	249
- - - - 1	2119641-1	FEED CAM, AIR FEED	248
- 1 - - 1	2119798-1	DETENT PIN	247
- 1 - - 1	1-22279-3	SPRING, COMPRESSION	246
- - 1 - -	2119758-1	RAM, AMP STYLE, SIDE FEED, NON-ADJ.	245
- 1 1 1 1	2119082-7	CAM, SNAIL, INSULATION ADJUSTMENT	244
- 1 1 1 1	2079764-1	WASHER, WAVE SPRING, CREST-TO-CREST	243
- 1 1 1 1	2119083-1	RETAINER, INSULATION DIAL	242
- 1 1 1 1	7-18023-7	SCR, SKT HD CAP M3 X 4.0	241
- - 2 2 -	2168400-6	SHCS, LOW HEAD, RoHS, M5 X 16	240
- - - - 1	2063440-2	AIR FEED MODULE	238
- - 1 1 -	2119740-2	TAG, IDENTIFICATION	213
- - 1 1 -	1901094-3	SPACER, FEEDER	198
- - - - 2	21045-3	RING, RETAIN, EXTERN, 3/16 CRESCENT	172
- 1 1 1 1	994969-1	MAGNET, RARE EARTH HIGH ENERGY	166
- REF REF REF REF	994970-2	COUNTER, MAGNETIC	164
- - - - 1	240638-1	SPRING, FEED FINGER	163
- - - - 1	3-23627-7	PIN, RETAIN, GRVD, 3/16 X .854	137
- - - - 1	2119799-1	HOLDER, FEED FINGER, AF	136
- - REF REF -	SEE NOTE 4	MEMORY CHIP, PROGRAMMED	135
- - 1 1 -	1633743-1	SERVO FEED LATCH ASM	133
- - REF REF -	2119944-1	FEED FINGER ASSEMBLY, SF	117
- 1 1 1 1	318563-1	GUARD, FRONT CHIP	89
- 1 1 1 1	455888-4	SPACER, CRIMPER	82
- 2 2 2 2	2079383-4	SCR, BHSC, RoHS (M4 X 8)	79
- 1 1 1 1	1803096-1	EXTENSION PLATE	78
- 1 1 1 1	2119956-1	DOCUMENTATION PACKAGE	71
- 1 1 1 1	2119791-7	DEPRESSOR, WIRE	70
- 1 1 1 1	2119943-1	WASHER, SPACER	69
- 1 - - - 1	2119740-1	TAG, IDENTIFICATION	67
- 2 2 2 2	2168078-1	SCREW, DRIVE, RH, RoHS, 2 x .188	66
- 1 - 1 1	2119793-1	LIMITER, ADJUSTMENT BOLT	63
- 3 - 3 3	992763-5	SCR, SET, SOC, CONE POINT, M3 x 4.0	62
- 1 1 1 1	2079383-4	SCR, BHSC, RoHS (M4 X 8)	60
- - - - 1	5-18022-5	SCR, HEX HD CAP, M4 X 6.0	59
- - - - 1	1338685-1	PAWL, FEED	56
- 4 4 4 4	2168400-1	SHCS, LOW HEAD, RoHS, M4 X 12	54
- 2 2 2 2	2168083-8	SCR, SKT HD CAP, RoHS, M4 X 16	53
- 1 1 1 1	5018030-1	NUT, HEX, REG, RoHS, M3	52
- 1 1 1 1	811242-5	BUMPER, HOLD DOWN	51
- 1 1 1 1	690753-2	SPACER, TONKER	50
- - - - 1	18023-9	SCR, SKT HD CAP M4 X 6.0	49
- 1 1 1 1	2119656-9	APPLICATOR BASIC ASSEMBLY, SF	46
- 1 - 1 1	2119370-1	RAM, AMP STYLE, SIDE FEED	44
- 1 1 1 1	2079383-7	SCR, BHSC, RoHS (M8 X 25)	41
- 1 - 1 1	2119645-1	DISC, NUMBERED FA WIRE ADJUSTMENT	40
- 1 - 1 1	2119957-1	APPLICATOR SHIM PACK	39
- 1 1 1 1	1-2119644-3	RAM WASHER, PRECISION	38
- 1 1 1 1	2119085-1	FA HEAD, ATLANTIC STYLE	37
- 1 - 1 1	2119092-1	BOLT, ADJUSTMENT	35
- 1 1 1 1	3-1752356-4	SUPPORT, TERMINAL	34
- 2 2 2 2	2079383-8	SCR, BHSC, RoHS (M4 X 16)	33
- 1 1 1 1	2161328-1	HEX HEAD, FLANGED, M5 x 8mm LONG	32
- 1 1 1 1	1-1320908-5	SPACER, STRIP GUIDE	30
- 1 1 1 1	2119959-1	ASSEMBLY, STRIP GUIDE	29
- 1 1 1 1	1320928-4	STRIP GUIDE	24
- 1 1 1 1	2168083-2	SCR, SKT HD CAP, RoHS, M4 X 8.0	21
- 1 1 1 1	1-18028-2	WASHER, FLAT, REG M4	20
- 1 1 1 1	2119533-1	STRIPPER, SIDE FEED	19
- 1 1 1 1	2119806-1	INSERT, SHEAR	13
- 1 1 1 1	3-22280-3	SPRING, COMPRESSION	12
- 1 1 1 1	1-356885-4	STOP, SHEAR	11
- 1 1 1 1	2119805-1	SHEAR HOLDER, FRONT	10
- 1 1 1 1	1803095-1	FLOATING SHEAR, FRONT	9
1 1 1 1 1	1633925-9	ANVIL, COMBINATION	8
- 1 1 1 1	240641-4	SPACER	7
- - - - -	-	-	6
- 1 1 1 1	1-2119757-2	DEPRESSOR, SHEAR	5
- 1 1 1 1	238011-4	BLOCK, CRIMPER SPACER	4
1 1 1 1 1	8-2119785-2	CRIMPER, INSULATION OVERLAP PREMIUM	3
- 1 1 1 1	455888-6	SPACER, CRIMPER	2
1 1 1 1 1	456410-1	CRIMPER, WIRE PREMIUM	1
-77 -7 -6 -5 -2	PART NO	DESCRIPTION	ITEM NO

DIMENSIONS:		TOLERANCES UNLESS OTHERWISE SPECIFIED:		DRAWING NO		DATE	
mm	0 PLC	±		CHK	H. HUANG	20JUL2015	
	1 PLC	±		CHK	L. ZHANG	20JUL2015	
	2 PLC	±		APVD	J. GUO	20JUL2015	
	3 PLC	±		NAME			
	4 PLC	±		Ocean Side Feed			
	5 PLC	±		Applicator			
	6 PLC	±		SIZE			
	ANGLES	±		CAGE CODE			
	FINISH	±		DRAWING NO			
				00779			
				©=2266914			
				Customer Accessible Production Drawing			
				SCALE			
				1:2			
				SHEET			
				1 of 4			
				REV			
				B			

LOC		DIST		REVISIONS			
A	66	P	LTM	DESCRIPTION	DATE	OWN	APVD
		-		SEE SHEET 1			

FEED TYPE

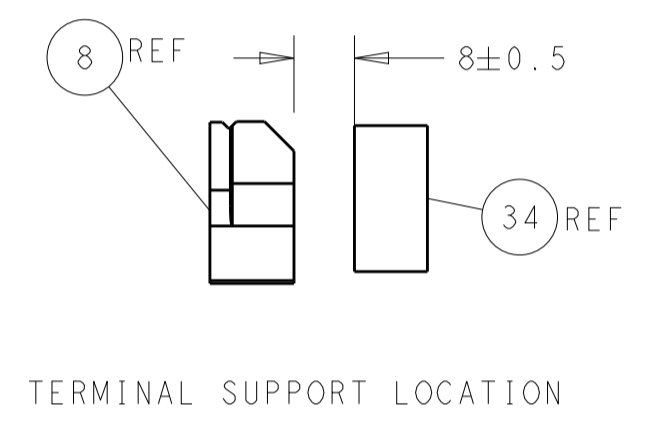
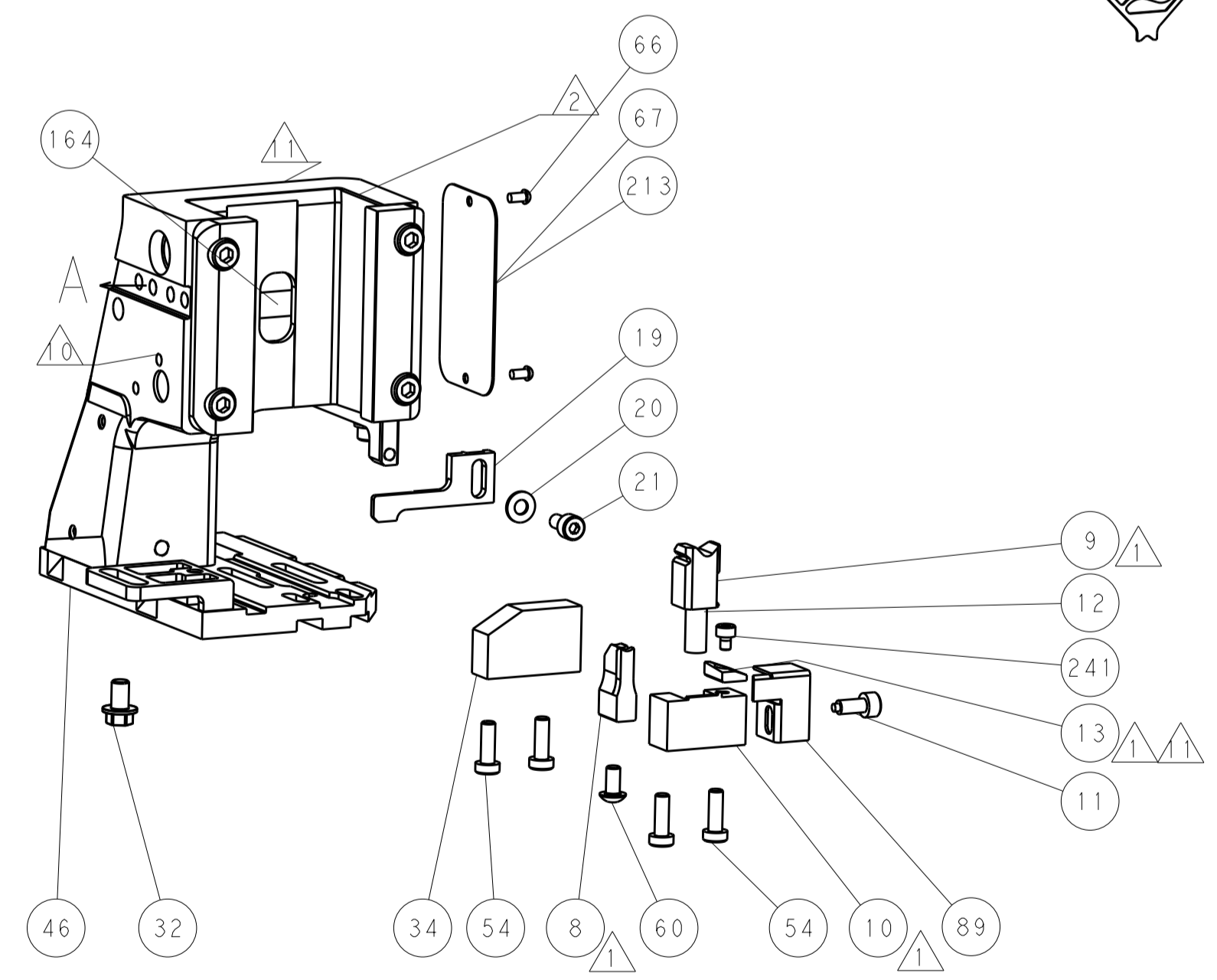
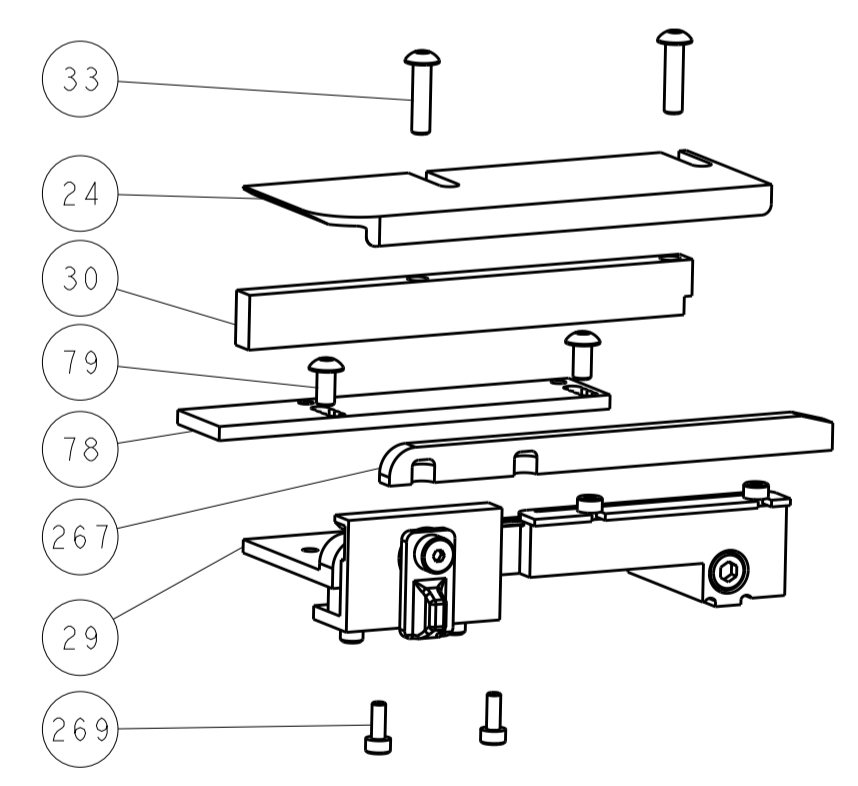
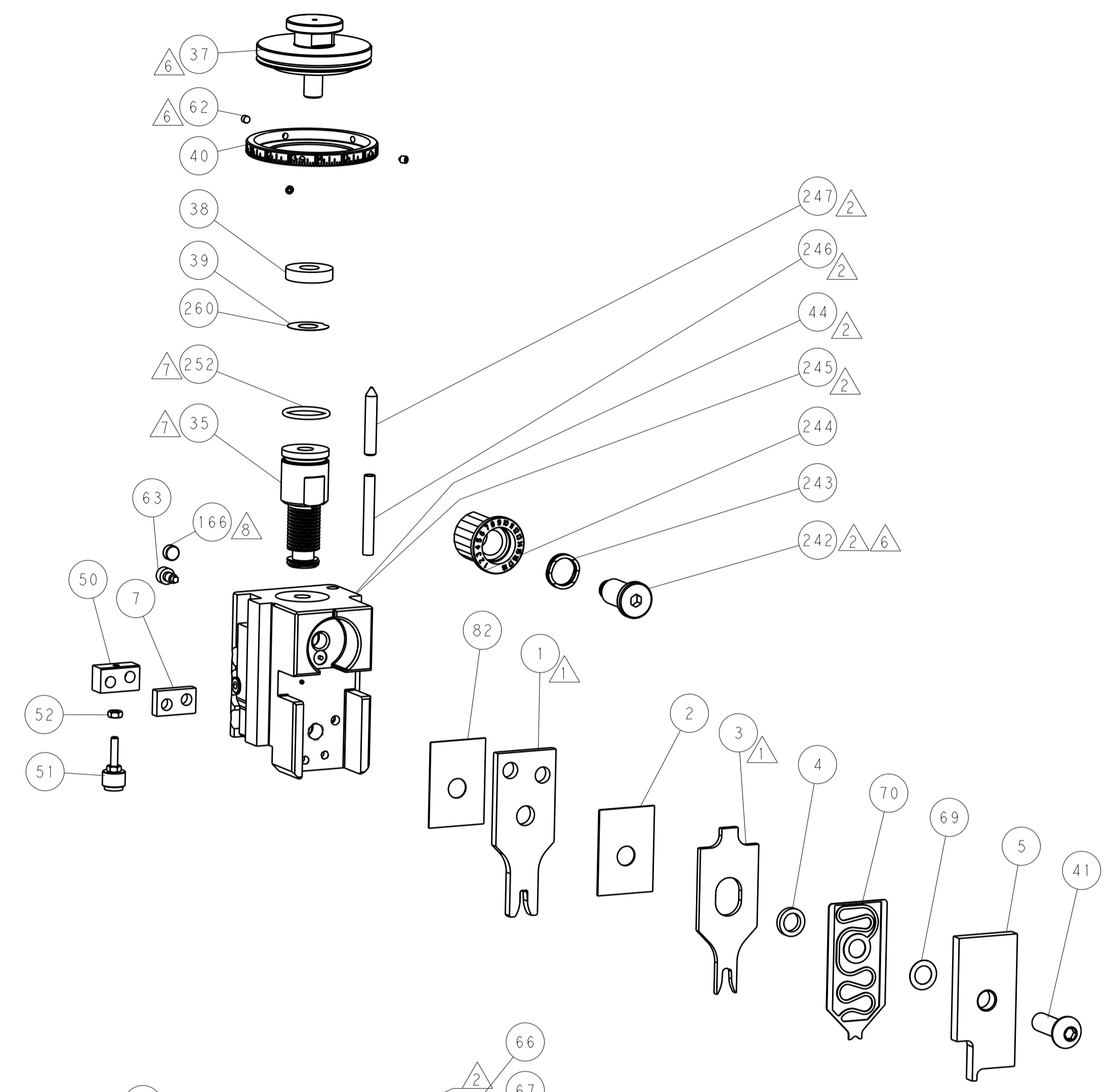
PNEUMATIC



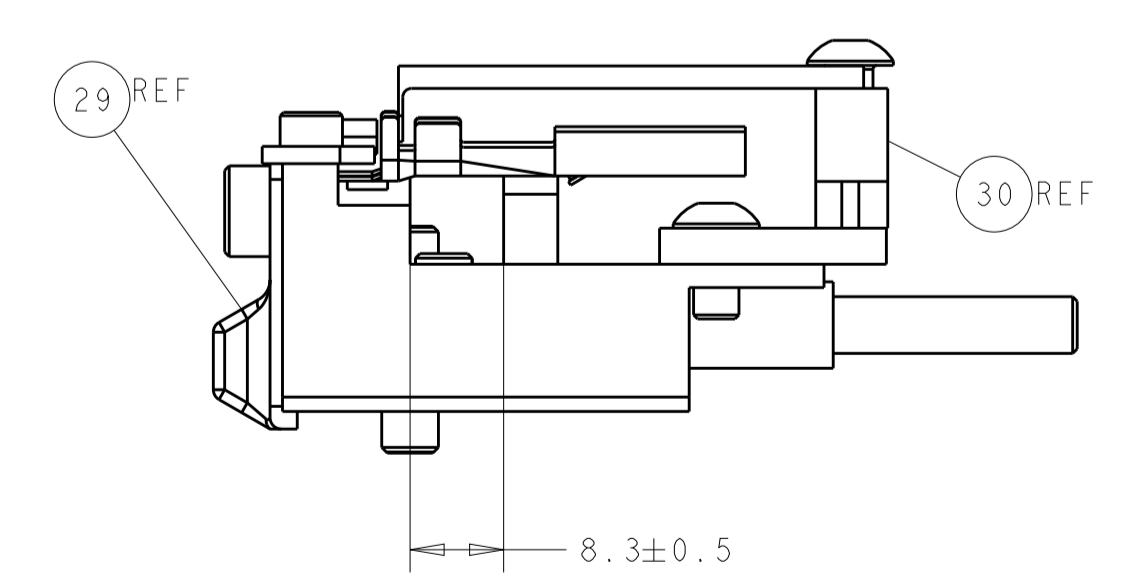
SERVO LATCH PLATE



CAM POSITION



ITEM 30 LOCATED AT FRONT HOLES



FEED TRACK POSITION GUIDE BY INSULATION BARREL

ATLANTIC VERSION
 Shown on sheets 1 of 4 & 2 of 4
 (Pacific version shown on sheets 3 of 4 & 4 of 4)

DIMENSIONS:		TOLERANCES UNLESS OTHERWISE SPECIFIED:		DWN R. HUANG 20 JUL 2015		TE Connectivity Harrisburg, PA 17105-3608	
mm	0 PLC	±		CHK L. ZHANG 20 JUL 2015	NAME Ocean Side Feed Applicator		
	1 PLC	±		APVD H. GUO 20 JUL 2015	PRODUCT SPEC		
	2 PLC	±			APPLICATION SPEC		
	3 PLC	±			SIZE CAGE CODE DRAWING NO		
	4 PLC	±			RESTRICTED TO		
	ANGLES	±			WEIGHT		
MATERIAL	FINISH				A1 00779 ©=2266914		
				Customer Accessible Production Drawing		SCALE	1:2 SHEET 2 OF 4 REV B

PACIFIC VERSION TERMINATOR INTERFACE ADAPTER	PART NUMBER	REVISION	DESCRIPTION	FEED TYPE
	2-2266914-2	B	FINE CRIMP HEIGHT ADJUST	PNEUMATIC
	2-2266914-5	B	FINE CRIMP HEIGHT ADJUST	SERVO LATCH PLATE ⁴
	2-2266914-7	B	FINE CRIMP HEIGHT ADJUST	NONE
	7-2266914-7	B	CRIMP TOOLING KIT	-

APPLICATOR DATA		
CRIMP	SIZE	TYPE
WIRE	3.30 mm [1.30]	F
INSUL	4.32 mm [1.70]	OV
APPLICATOR INSTRUCTIONS 408-10389		

TERMINAL DATA: KET TERMINAL		TE CRIMP SPECIFICATION	
TERMINAL NAME: .312 II TAB TERMINAL			
WIRE STRIP LENGTH 4.50-5.50 mm [1.77-.217 IN]		INSULATION DIAMETER RANGE Ø2.92-3.90 mm [1.115-.154 IN]	
TERMINAL APPLICATION SPECIFICATION NONE		-	
TERMINALS APPLIED ¹⁰			
TE TERMINAL 2113793-1	KET TERMINAL ST740600-3	TE TERMINAL	KET TERMINAL

WIRE SIZE	CRIMP HEIGHT mm [INCH]	CRIMP HEIGHT REFERENCE SETTING ⁹
12 AWG	2.20 +/- 0.05 [1.087 +/- .002]	6.3
3.00mm2	2.14 +/- 0.05 [1.084 +/- .002]	6.9
14 AWG	1.90 +/- 0.05 [1.075 +/- .002]	9.3
2.00mm2	1.89 +/- 0.05 [1.074 +/- .002]	9.4



- ¹ RECOMMENDED SPARE PARTS
- ² GREASE BEARING SURFACES LIGHTLY
- 3. LUBRICATE DAILY PER THE APPLICATOR INSTRUCTION SHEET SUPPLIED WITH THE APPLICATOR.
- ⁴ APPLICATOR SPECIFIC DATA TO BE ENTERED INTO BLANK MEMORY CHIP AT ASSEMBLY. SEE BELOW FOR PART NUMBER:
PNEUMATIC FEED WITH "SMART APPLICATOR" CONVERSION: 8-2266914-4
SERVO FEED WITH "FINE CRIMP HEIGHT ADJUST": 8-2266914-5
- 5. ADJUSTMENT OF THE STRIPPER MAY BE REQUIRED WHEN MOVING THE APPLICATOR BETWEEN BENCH AND LEADMAKER APPLICATIONS.
- ⁶ APPLY PART NUMBER 1-23419-5 LOCTITE TO THREADS OF ITEMS 62.
APPLY PART NUMBER 2-23419-6 LOCTITE TO THREADS OF ITEMS 242.
- ⁷ GREASE THREADS, GROOVE AND O-RING ON ITEMS 139 & 152.
- ⁸ MAGNET MUST BE ORIENTED CORRECTLY IN ORDER TO PROPERLY ACTUATE THE COUNTER.
- ⁹ CRIMP HEIGHT REFERENCE SETTING WAS THE SETTING USED WHEN THE APPLICATOR WAS QUALIFIED AT THE FACTORY. ADJUSTMENT MAY BE NECESSARY WHEN RUNNING APPLICATOR IN THE FIELD.
- ¹⁰ TERMINAL PITCH NOT COMPATIBLE WITH MECHANICAL FEED.
- ¹¹ TO CONVERT THE APPLICATOR TO A NON-CARRIER CUTTING STYLE, REMOVE ITEM 13 AND ATTACH TO THE LOCATION ON BACK SIDE OF THE HOUSING. REFER TO INSTRUCTION SHEET FOR ADDITIONAL INFORMATION.

***WARNING**
ON INSTALLATION, SET WIRE DISC, ITEM 40 TO LARGEST WIRE SIZE SETTING. USE OF SETTINGS BELOW MINIMUM REQUIRED CRIMP HEIGHT SETTING WILL CAUSE DAMAGE TO CRIMP TOOLING.

-77	-27	-25	-22	PART NO	DESCRIPTION	ITEM NO
-	2	2	2	2168083-1	SCR, SKT HD CAP, RoHS, M3 X 8.0	269
-	1	1	1	1633782-3	FENCE	267

PACIFIC VERSION
Shown on sheets 3 of 4 & 4 of 4
(Atlantic version shown on sheets 1 of 4 & 2 of 4)

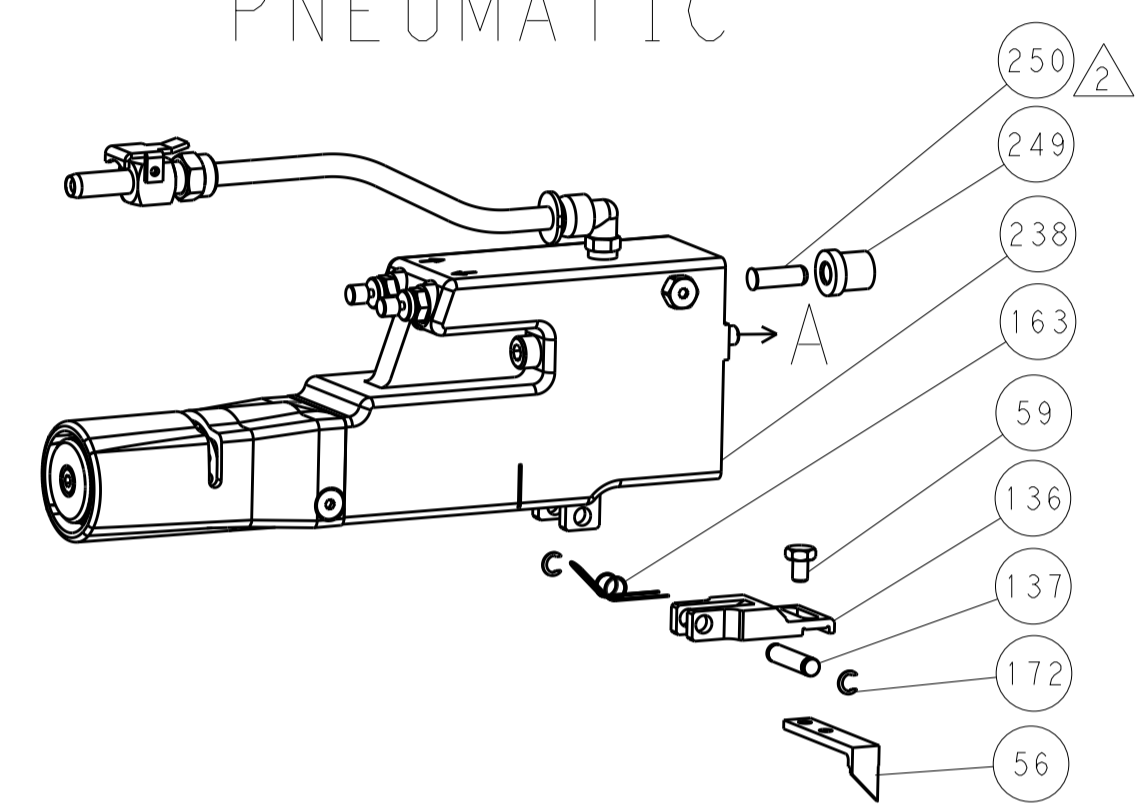
SET UP GAUGE	LOC	DIST	REVISIONS					
2119599-1	A	66	P	LTN	DESCRIPTION	DATE	OWN	APVD
			-	-	SEE SHEET 1	-	-	-

-	1	1	1	2119782-1	FINE ADJUST HEAD ASM, PACIFIC STYLE	251
-	-	-	1	2119640-1	PUSH ROD, AIR FEED	250
-	-	-	1	2079988-1	BUSHING, LCH5-12, MISUMI	249
-	1	1	1	1-22279-3	SPRING, COMPRESSION	246
-	1	1	1	2119082-7	CAM, SNAIL, INSULATION ADJUSTMENT	244
-	1	1	1	2079764-1	WASHER, WAVE SPRING, CREST-TO-CREST	243
-	1	1	1	2119083-1	RETAINER, INSULATION DIAL	242
-	1	1	1	7-18023-7	SCR, SKT HD CAP M3 X 4.0	241
-	-	2	-	2168400-6	SHCS, LOW HEAD, RoHS, M5 X 16	240
-	-	-	1	2063440-2	AIR FEED MODULE	238
-	-	1	-	2119740-2	TAG, IDENTIFICATION	213
-	-	1	-	1901094-3	SPACER, FEEDER	198
-	-	-	2	21045-3	RING, RETAIN, EXTERN, 3/16 CRESCENT	172
-	1	1	1	994969-1	MAGNET, RARE EARTH HIGH ENERGY	166
-	REF	REF	REF	994970-2	COUNTER, MAGNETIC	164
-	-	-	1	240638-1	SPRING, FEED FINGER	163
-	1	1	1	8-21084-1	O-RING, .801 ID, .070 DIA. MAT.	152
-	-	-	1	2119641-2	FEED CAM, AIR FEED	151
-	1	1	1	2119798-2	DETENT PIN	145
-	1	1	1	2079383-8	SCR, BHSC, RoHS (M4 X 16)	144
-	4	4	4	2168400-5	SHCS, LOW HEAD, RoHS, M4 X 20	143
-	1	1	1	1-2119656-0	APPLICATOR BASIC ASSEMBLY, SF	141
-	1	1	1	2119650-1	RAM, ASIAN STYLE, SIDE FEED	140
-	1	1	1	2119092-2	BOLT, ADJUSTMENT	139
-	-	-	1	3-23627-7	PIN, RETAIN, GRVD, 3/16 X .854	137
-	-	-	1	2119799-1	HOLDER, FEED FINGER, AF	136
-	-	REF	-	SEE NOTE 4	MEMORY CHIP, PROGRAMMED	135
-	-	1	-	1633743-1	SERVO FEED LATCH ASM	133
-	-	REF	-	2119944-1	FEED FINGER ASSEMBLY, SF	117
-	1	1	1	318563-1	GUARD, FRONT CHIP	89
-	1	1	1	455888-4	SPACER, CRIMPER	82
-	2	2	2	2079383-4	SCR, BHSC, RoHS (M4 X 8)	79
-	1	1	1	1803096-1	EXTENSION PLATE	78
-	1	1	1	2119956-1	DOCUMENTATION PACKAGE	71
-	1	1	1	2119791-7	DEPRESSOR, WIRE	70
-	1	1	1	2119943-1	WASHER, SPACER	69
-	1	-	1	2119740-1	TAG, IDENTIFICATION	67
-	2	2	2	2168078-1	SCREW, DRIVE, RH, RoHS, 2 x .188	66
-	1	1	1	2119793-1	LIMITER, ADJUSTMENT BOLT	63
-	3	3	3	992763-5	SCR, SET, SOC, CONE POINT, M3 X 4.0	62
-	-	-	1	5-18022-5	SCR, HEX HD CAP, M4 X 6.0	59
-	-	-	1	1338685-1	PAWL, FEED	56
-	2	2	2	2168083-8	SCR, SKT HD CAP, RoHS, M4 X 16	53
-	1	1	1	5018030-1	NUT, HEX, REG, RoHS, M3	52
-	1	1	1	811242-5	BUMPER, HOLD DOWN	51
-	1	1	1	690753-2	SPACER, TONKER	50
-	-	-	1	18023-9	SCR, SKT HD CAP M4 X 6.0	49
-	1	1	1	2079383-7	SCR, BHSC, RoHS (M8 X 25)	41
-	1	1	1	2119645-1	DISC, NUMBERED FA WIRE ADJUSTMENT	40
-	1	1	1	2119957-1	APPLICATOR SHIM PACK	39
-	1	1	1	1-2119644-3	RAM WASHER, PRECISION	38
-	1	1	1	3-1752356-4	SUPPORT, TERMINAL	34
-	2	2	2	2079383-8	SCR, BHSC, RoHS (M4 X 16)	33
-	1	1	1	2161328-1	HEX HEAD, FLANGED, M5 X 8mm LONG	32
-	1	1	1	1-1320908-5	SPACER, STRIP GUIDE	30
-	1	1	1	2119959-1	ASSEMBLY, STRIP GUIDE	29
-	1	1	1	1320928-4	STRIP GUIDE	24
-	1	1	1	2168083-2	SCR, SKT HD CAP, RoHS, M4 X 8.0	21
-	1	1	1	1-18028-2	WASHER, FLAT, REG M4	20
-	1	1	1	2119533-1	STRIPPER, SIDE FEED	19
-	1	1	1	2119806-1	INSERT, SHEAR	13
-	1	1	1	3-22280-3	SPRING, COMPRESSION	12
-	1	1	1	1-356885-4	STOP, SHEAR	11
-	1	1	1	2119805-1	SHEAR HOLDER, FRONT	10
-	1	1	1	1803095-1	FLOATING SHEAR, FRONT	9
-	1	1	1	1633925-9	ANVIL, COMBINATION	8
-	1	1	1	240641-4	SPACER	7
-	-	-	-	-	-	6
-	1	1	1	1-2119757-2	DEPRESSOR, SHEAR	5
-	1	1	1	238011-4	BLOCK, CRIMPER SPACER	4
-	1	1	1	8-2119785-2	CRIMPER, INSULATION OVERLAP PREMIUM	3
-	1	1	1	455888-6	SPACER, CRIMPER	2
-	1	1	1	456410-1	CRIMPER, WIRE PREMIUM	1

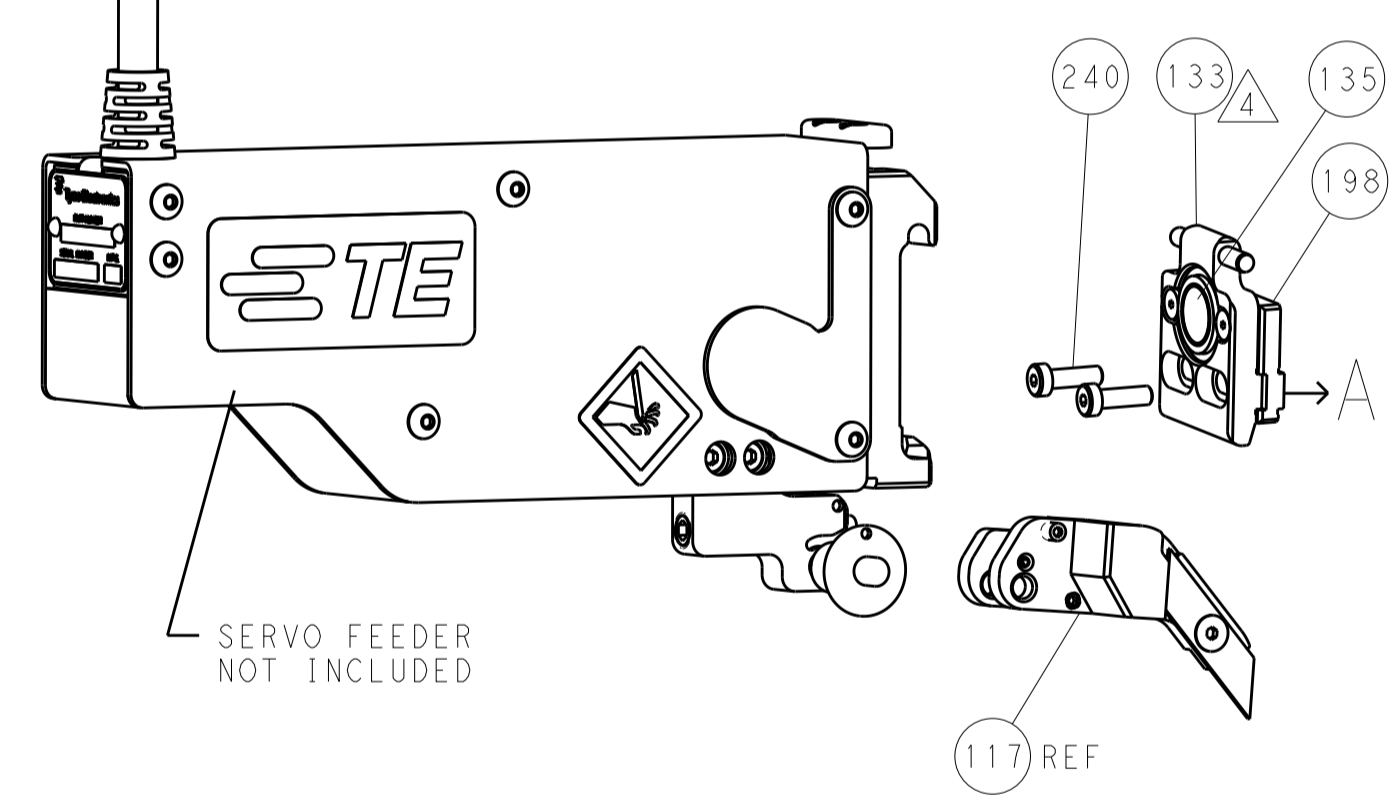
DIMENSIONS:		TOLERANCES UNLESS OTHERWISE SPECIFIED:		DRAWN		CHK		APVD		NAME	
mm	0 PLC	±		H. HUANG	20JUL2015	L. ZHANG	20JUL2015	J. GUO	20JUL2015	Ocean Side Feed Applicator	
	1 PLC	±								Customer Accessible Production Drawing	
	2 PLC	±								SCALE 1:2 SHEET 3 OF 4 REV B	
	3 PLC	±								RESTRICTED TO	
	4 PLC	±								Customer Accessible Production Drawing	
	ANGLES	±								SCALE 1:2 SHEET 3 OF 4 REV B	
	FINISH	±								SCALE 1:2 SHEET 3 OF 4 REV B	

LOC		DIST		REVISIONS			
A	66	P	LTN	DESCRIPTION	DATE	DMN	APVD
		-		SEE SHEET 1			

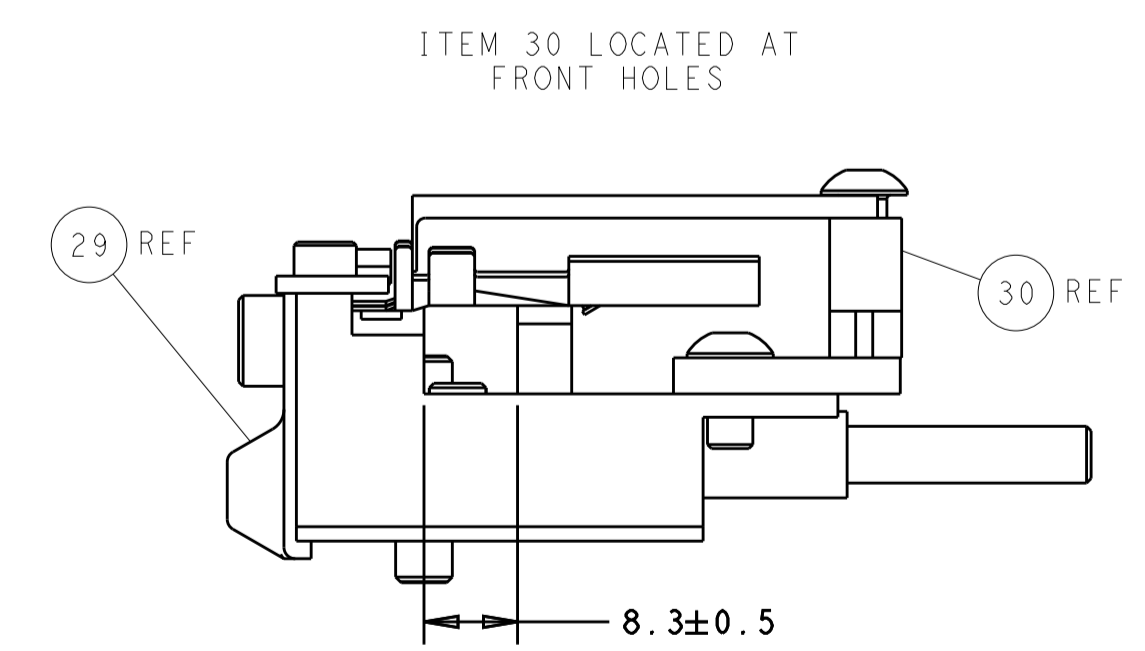
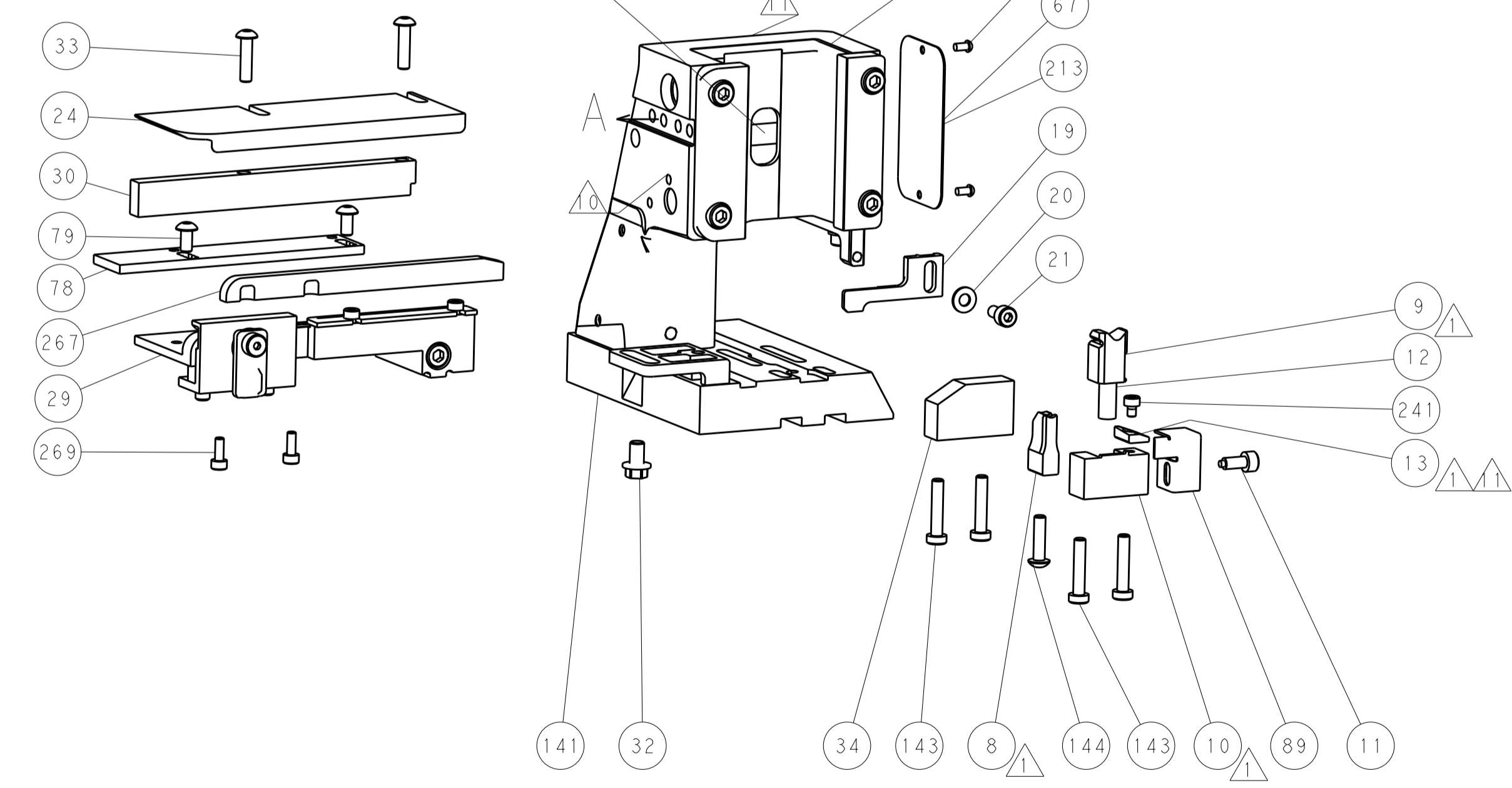
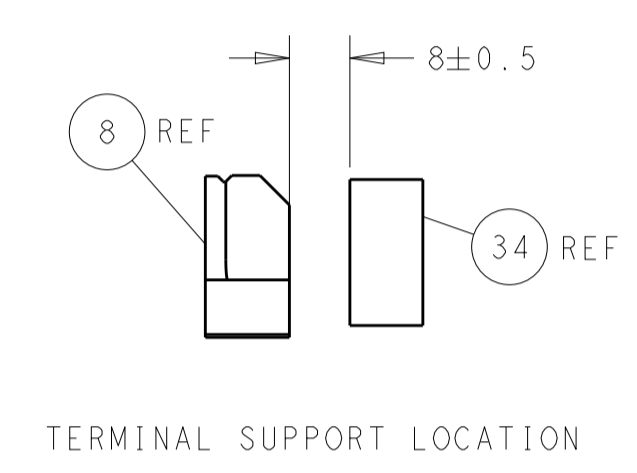
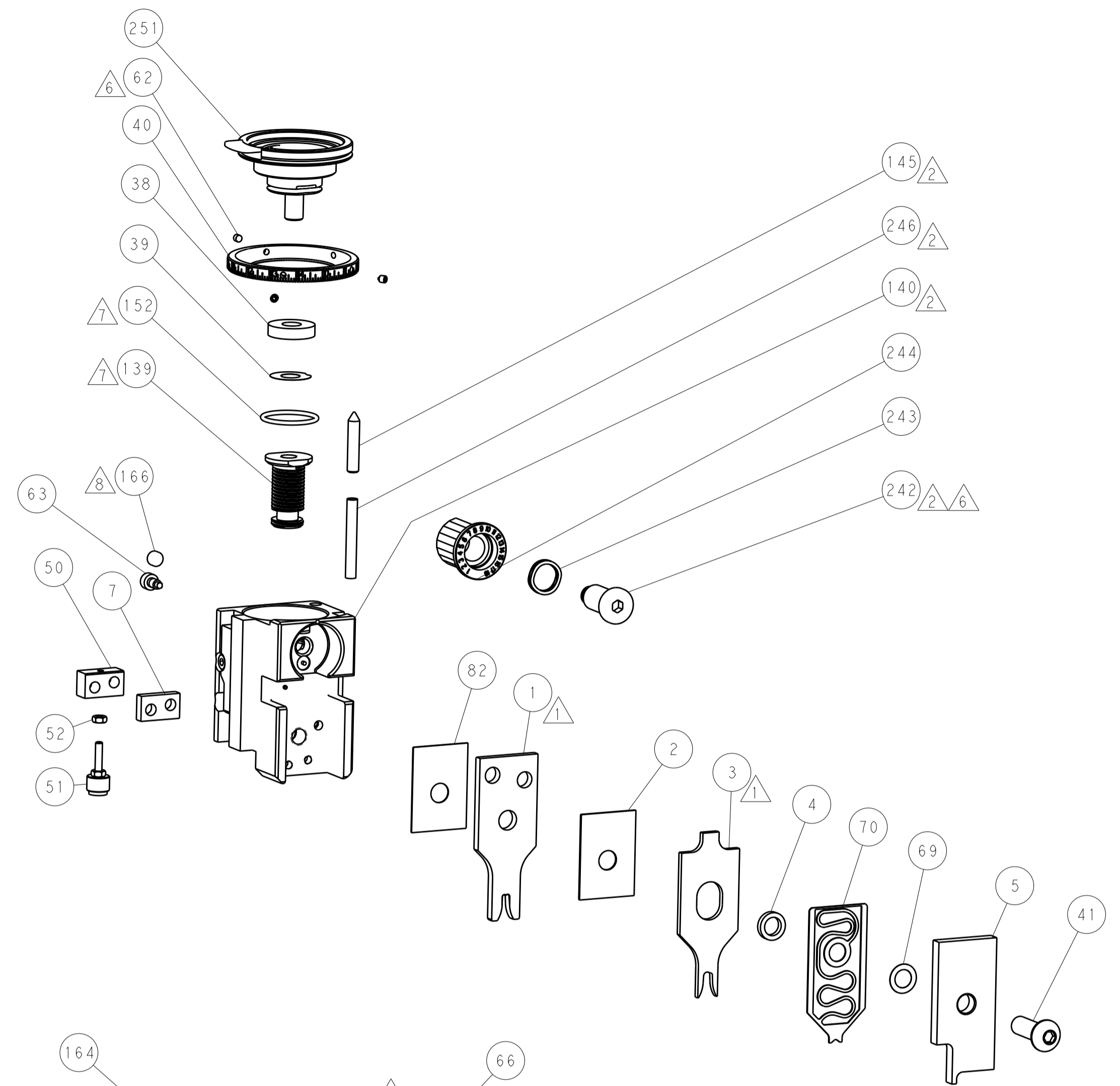
FEED TYPE PNEUMATIC



SERVO LATCH PLATE



CAM POSITION



PACIFIC VERSION
 Shown on sheets 3 of 4 & 4 of 4
 (Atlantic version shown on sheets 1 of 4 & 2 of 4)

DIMENSIONS:		TOLERANCES UNLESS OTHERWISE SPECIFIED:		DWN R. HUANG 20JUL2015		STE Connectivity Harrisburg, PA 17105-3608	
mm	0 PLC	±		CHK L. ZHANG 20JUL2015	NAME	Ocean Side Feed Applicator	
	1 PLC	±		APVD H. GUO 20JUL2015	PRODUCT SPEC	RESTRICTED TO	
	2 PLC	±			APPLICATION SPEC	SIZE	CAGE CODE
	3 PLC	±				A11	00779
	4 PLC	±			WEIGHT	C=2266914	
	ANGLES	±			MATERIAL	Customer Accessible Production Drawing	
					FINISH	SCALE	1:2
						SHEET	4 OF 4
						REV	B