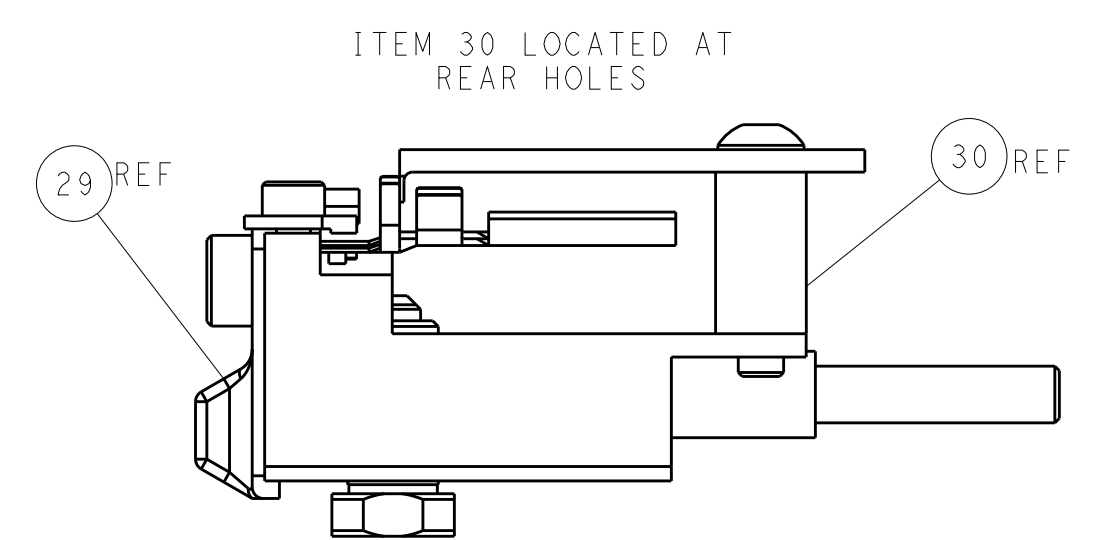
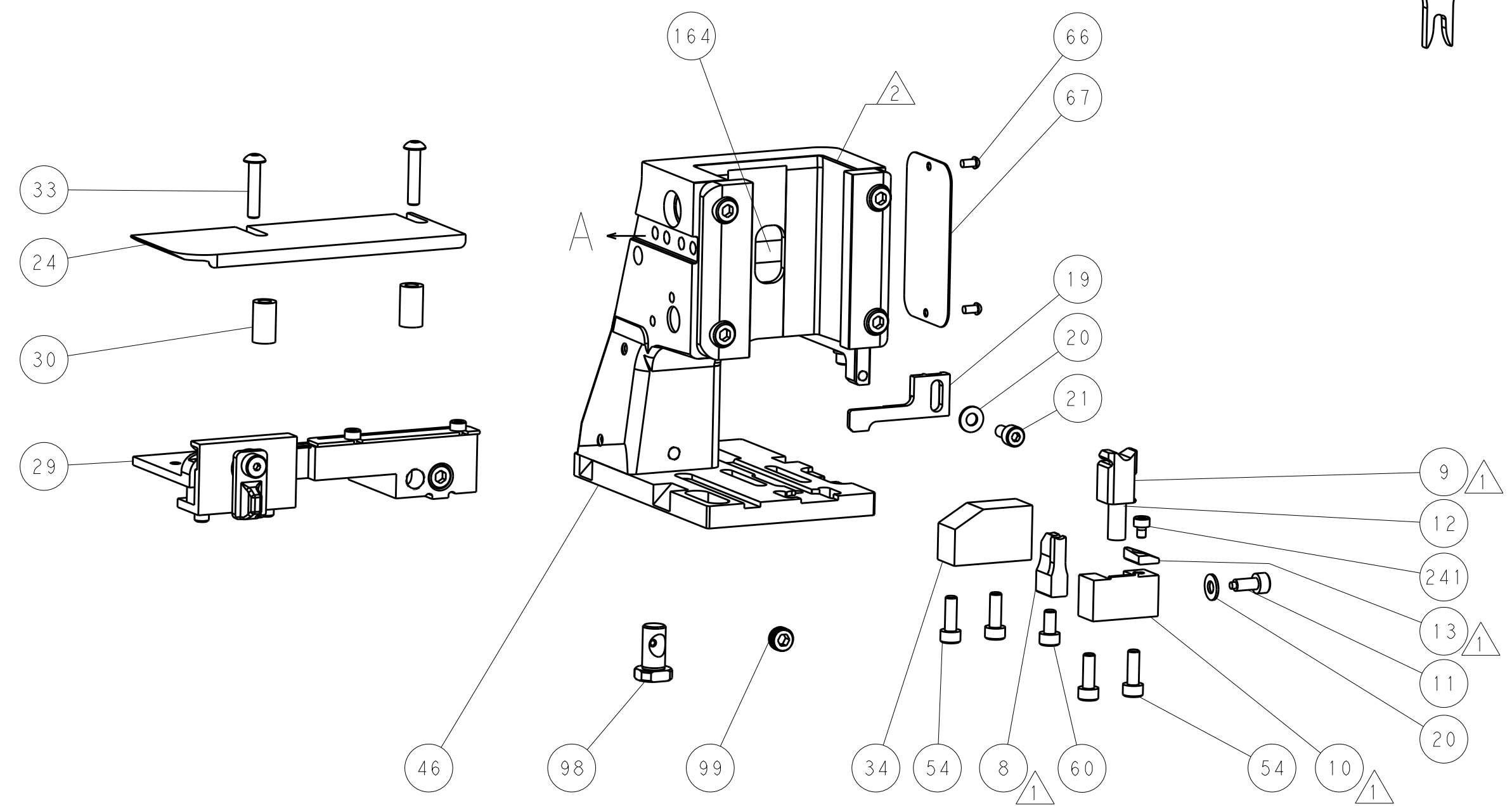
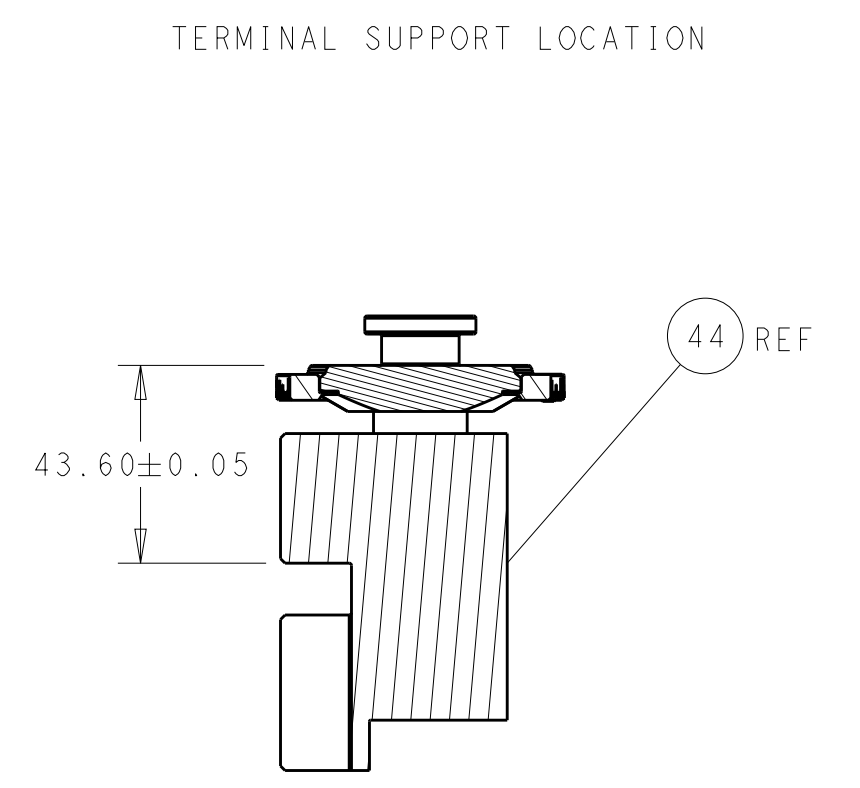
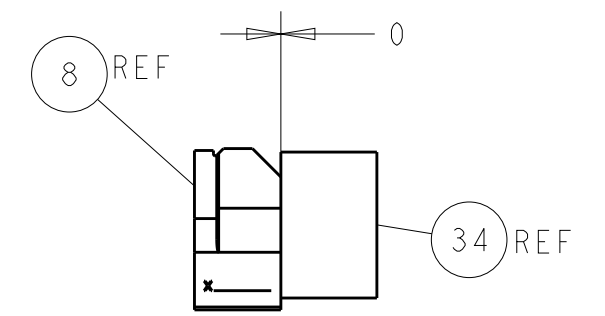
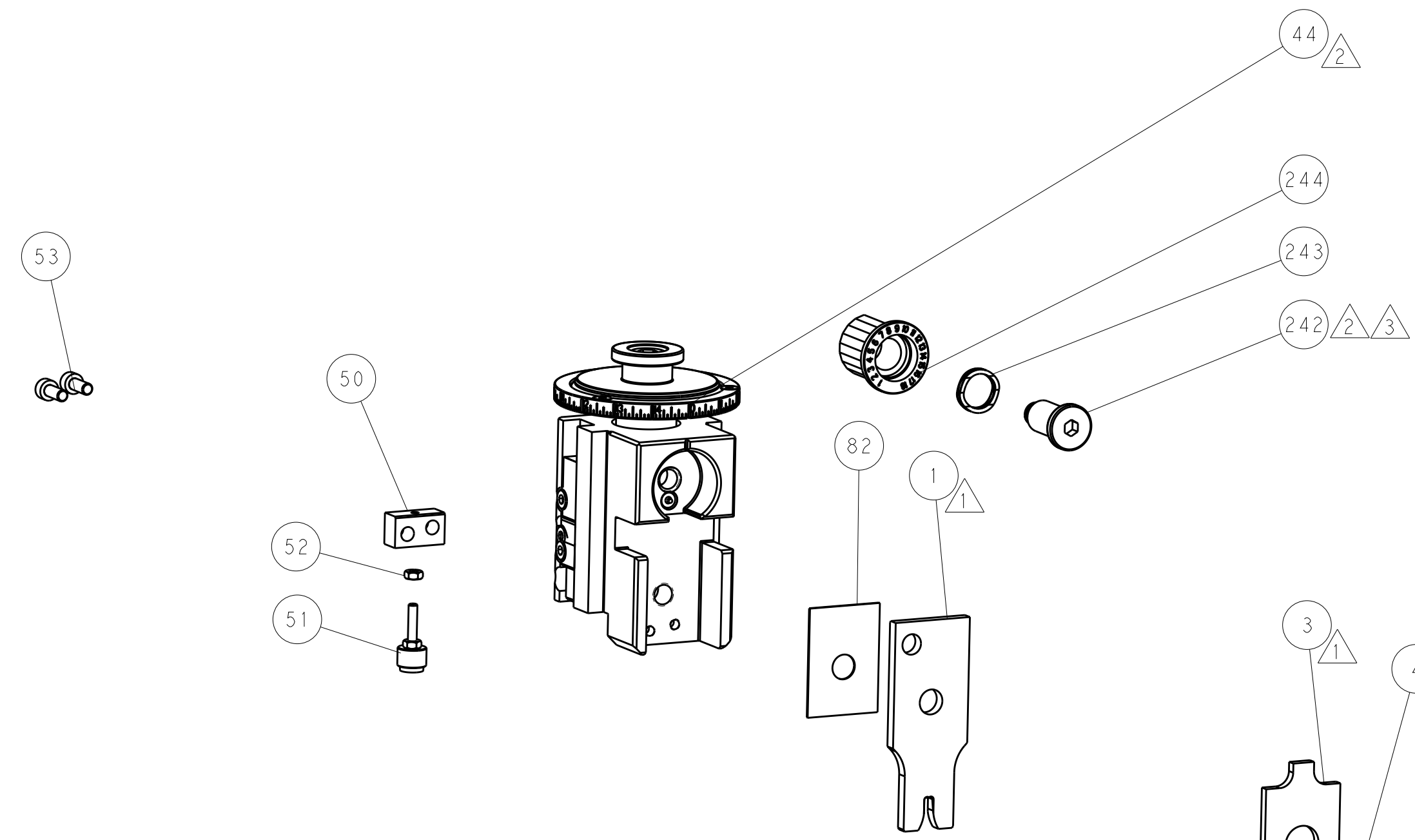
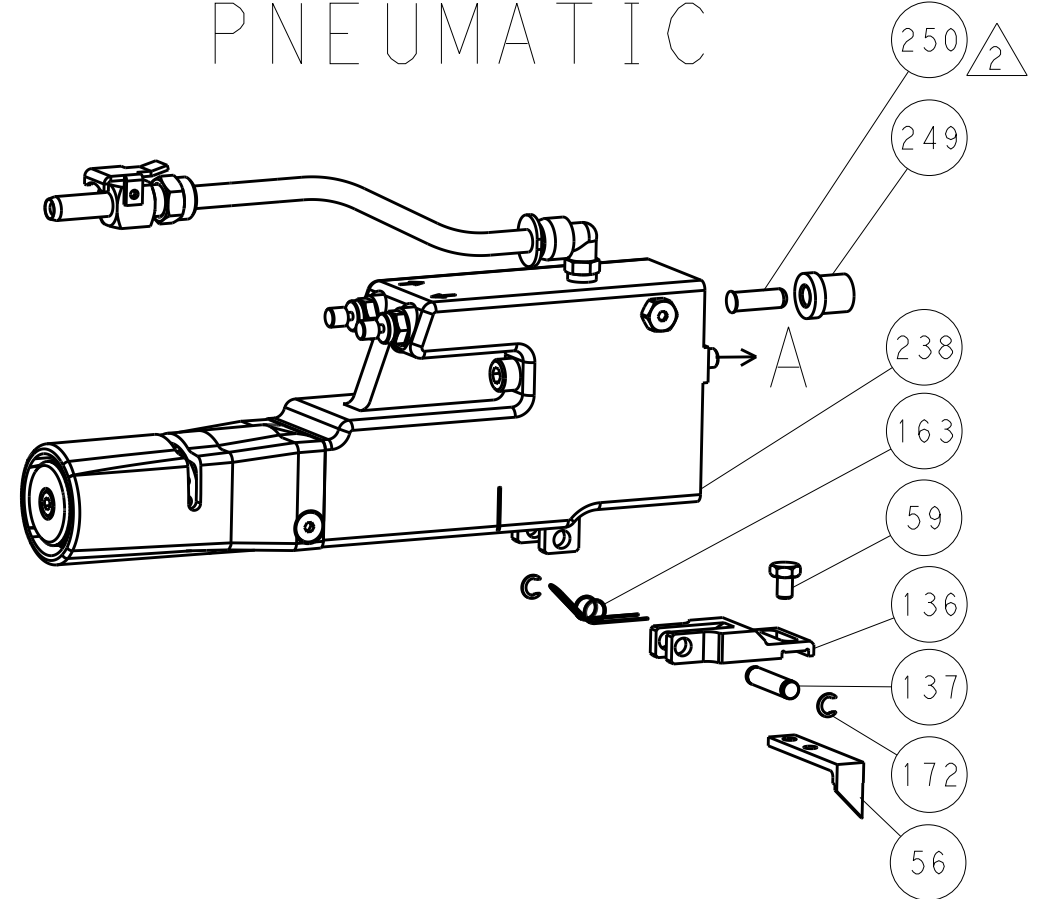


LOC	DIST	REV	DATE	BY	APP'D
A	66				

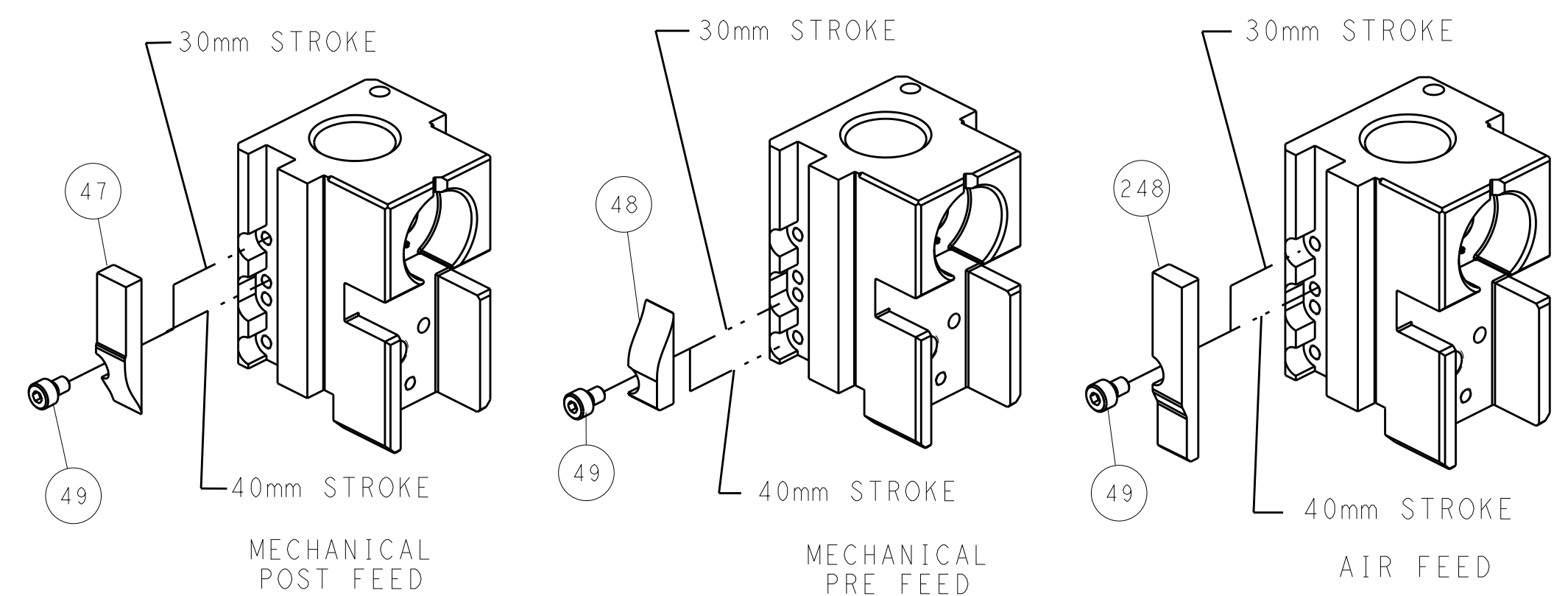
FEED TYPE MECHANICAL



PNEUMATIC



CAM POSITIONS



ATLANTIC VERSION
 Shown on sheets 1 of 4 & 2 of 4
 (Pacific version shown on sheets 3 of 4 & 4 of 4)

DIMENSIONS: mm 		TOLERANCES UNLESS OTHERWISE SPECIFIED: 0 PLC ± 1 PLC ± 2 PLC ± 3 PLC ± 4 PLC ± ANGLES ±		DWN B. WEAVER 13OCT2015 CHK C. TOPPER 13OCT2015 APVD C. TOPPER 13OCT2015 PRODUCT SPEC APPLICATION SPEC WEIGHT Customer Accessible Production Drawing		NAME Ocean Side Feed Applicator SIZE CAGE CODE DRAWING NO A1 00779 ©=2266639 SCALE 1:2 SHEET 2 OF 4 REV B		TE Connectivity Harrisburg, PA 17105-3608 RESTRICTED TO	
-----------------------	--	---	--	--	--	---	--	---	--

PART NUMBER	REVISION	DESCRIPTION	FEED TYPE
2-2266639-1	B	FINE CRIMP HEIGHT ADJUST	MECHANICAL
2-2266639-2	B	FINE CRIMP HEIGHT ADJUST	PNEUMATIC
7-2266639-7	A	CRIMP TOOLING KIT	-

PACIFIC VERSION TERMINATOR
INTERFACE ADAPTER



APPLICATOR DATA		
CRIMP	SIZE	TYPE
WIRE	3.05 mm [.120]	F
INSUL	4.57 mm [.180]	OV

APPLICATOR INSTRUCTIONS
408-35042

TERMINAL DATA: TE TERMINAL		TE CRIMP SPECIFICATION	
TERMINAL NAME: 6.3mm - REC. & TAB CONTACT			
WIRE STRIP LENGTH		INSULATION DIAMETER RANGE	
5.10-5.90 mm [.201-.232 IN]		Ø2.70-4.50 mm [.106-.177 IN]	
TERMINAL APPLICATION SPECIFICATION		114-18022	
TERMINALS APPLIED			
TE TERMINAL	TE TERMINAL	TE TERMINAL	TE TERMINAL
963894-1	963894-2	963755-1	

WIRE SIZE	CRIMP HEIGHT mm [INCH]	CRIMP HEIGHT REFERENCE SETTING
4.00mm2	2.27+/-0.05 [.089+/-0.002]	6.1
3.50mm2	2.15+/-0.05 [.085+/-0.002]	7.3
3.00mm2	2.03+/-0.05 [.080+/-0.002]	8.5
2.50mm2	1.91+/-0.05 [.075+/-0.002]	9.7

- RECOMMENDED SPARE PARTS
- REFER TO SUPPLIED INSTRUCTION SHEET FOR CLEANING, LUBRICATION AND STORAGE OF APPLICATOR.
- APPLY PART NUMBER 2-23419-6 LOCTITE TO THREADS OF ITEM 242.
- CRIMP HEIGHT REFERENCE SETTING WAS THE SETTING USED WHEN THE APPLICATOR WAS QUALIFIED AT THE FACTORY. ADJUSTMENT MAY BE NECESSARY WHEN RUNNING APPLICATOR IN THE FIELD.
- UNLESS SPECIFIED OTHERWISE TORQUE VALUES SHALL BE USED PER DOCUMENT, 101-35000.

***WARNING**
ON INSTALLATION, SET WIRE DISC TO CRIMP HEIGHT REFERENCE SETTING FOR LARGEST WIRE SIZE. CRIMP HEIGHT REFERENCE SETTINGS GREATER THAN THE VALUE SHOWN MAY CAUSE DAMAGE TO THE CRIMP TOOLING, REFER TO THE INSTRUCTION SHEET FOR PROPER SETUP AND ADJUSTMENTS.

PACIFIC VERSION
Shown on sheets 3 of 4 & 4 of 4
(Atlantic version shown on sheets 1 of 4 & 2 of 4)

LOC	DIST	REV	DATE	BY	APPD
A	66	-	-	-	-

REVISIONS					
REV	DATE	DESCRIPTION	DATE	BY	APPD
-	-	SEE SHEET 1	-	-	-
-	1	2119640-1			250
-	1	1803259-1			249
-	1	2119082-7			244
-	1	2079764-1			243
-	1	2119083-1			242
-	1	7-18023-7			241
-	-	2119580-1			239
-	1	2063440-1			238
-	2	21045-3			172
-	REF	994970-2			164
-	1	240638-1			163
-	1	2119641-2			151
-	1	2168083-8			144
-	4	2168083-9			143
-	-	2119653-2			142
-	1	1-1803583-0			141
-	1	1803516-1			140
-	1	3-23627-7			137
-	1	2119799-1			136
-	1	2844908-1			99
-	1	2844907-1			98
-	1	455888-5			82
-	1	1803607-1			71
-	1	2119791-9			70
-	1	2119740-1			67
-	2	2168078-1			66
-	1	5-18022-5			59
-	1	1338685-1			56
-	2	1-2168083-0			53
-	1	5018030-1			52
-	1	811242-5			51
-	1	690753-2			50
-	1	18023-9			49
-	-	2119652-1			48
-	1	1803602-1			41
-	1	1752356-3			34
-	2	2079383-5			33
-	2	2-2844962-6			30
-	1	2844992-2			29
-	1	1320928-3			24
-	1	2168083-2			21
-	2	1-18028-2			20
-	1	2119533-1			19
-	1	2119806-1			13
-	1	3-22280-3			12
-	1	1-356885-4			11
-	1	2119805-1			10
-	1	1803095-1			9
-	1	1333208-1			8
-	-	-			7
-	-	-			6
-	1	1-2119757-0			5
-	1	2-238011-1			4
-	1	2119785-8			3
-	-	-			2
-	1	1-456409-2			1

DIMENSIONS:		TOLERANCES UNLESS OTHERWISE SPECIFIED:		MATERIAL:	
mm	0 PLC ±	1 PLC ±	2 PLC ±	3 PLC ±	4 PLC ±
	ANGLES ±	FINISH			

DWG	B. WEAVER	13OCT2015
CHK	C. TOPPER	13OCT2015
APPD	C. TOPPER	13OCT2015

NAME	Ocean Side Feed Applicator		
SIZE	CAGE CODE	DRAWING NO	RESTRICTED TO
A1	00779	2266639	

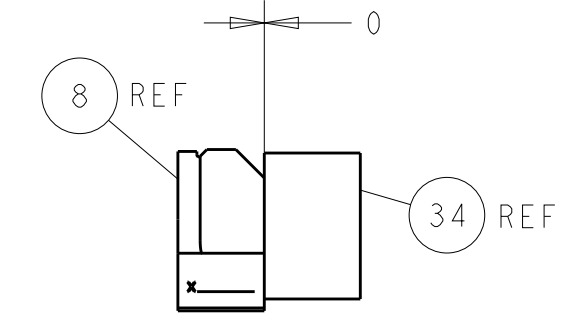
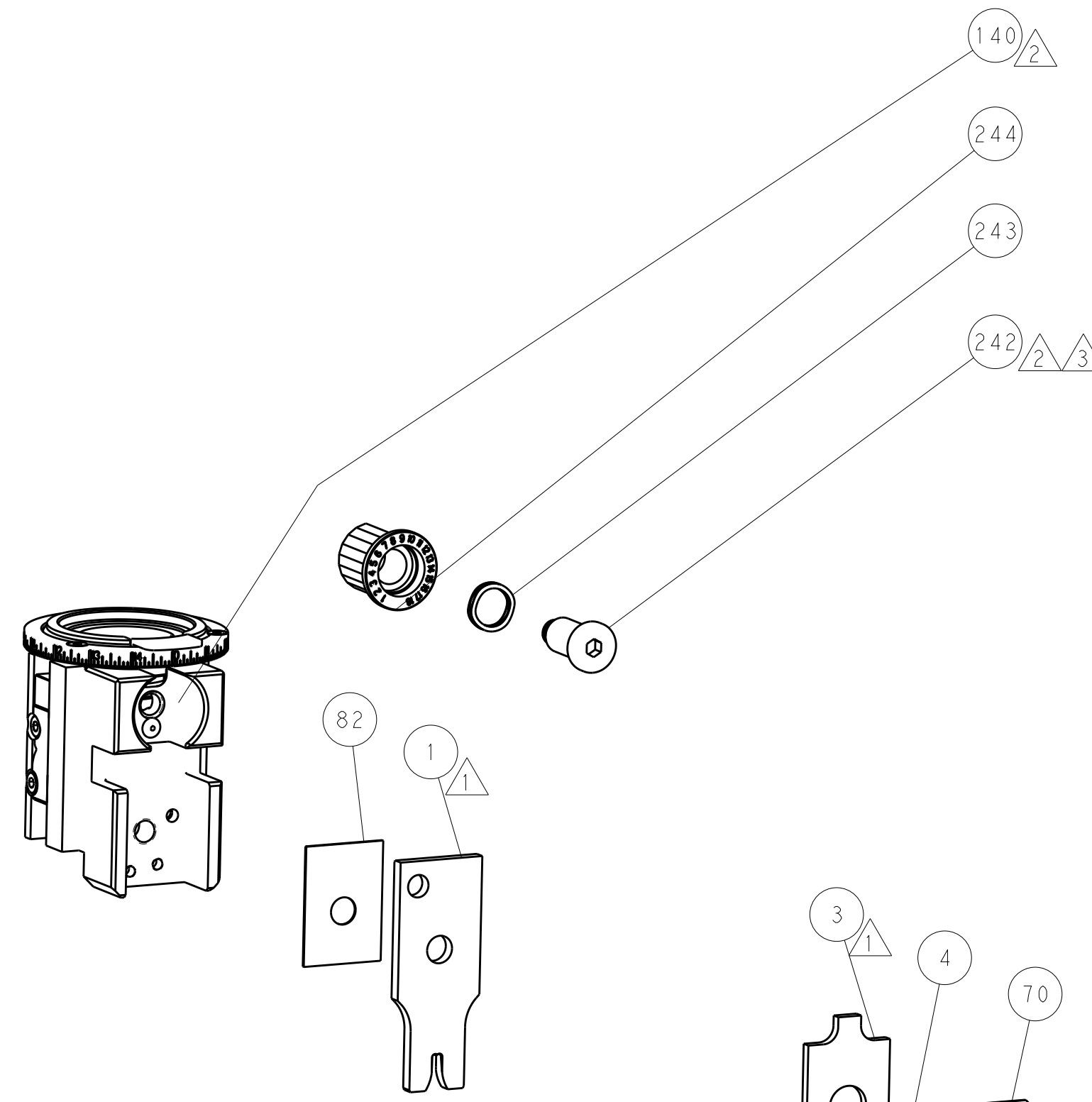
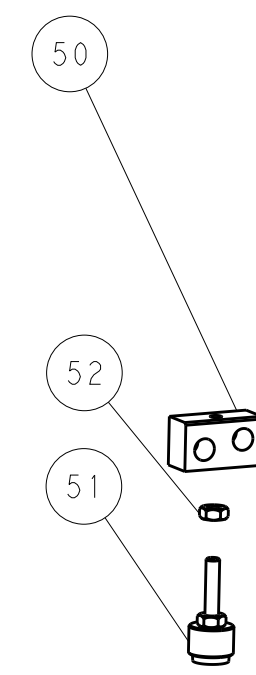
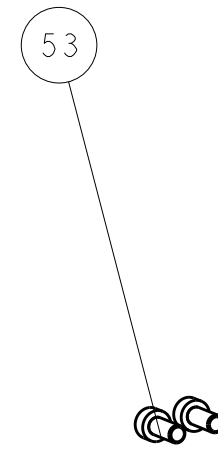
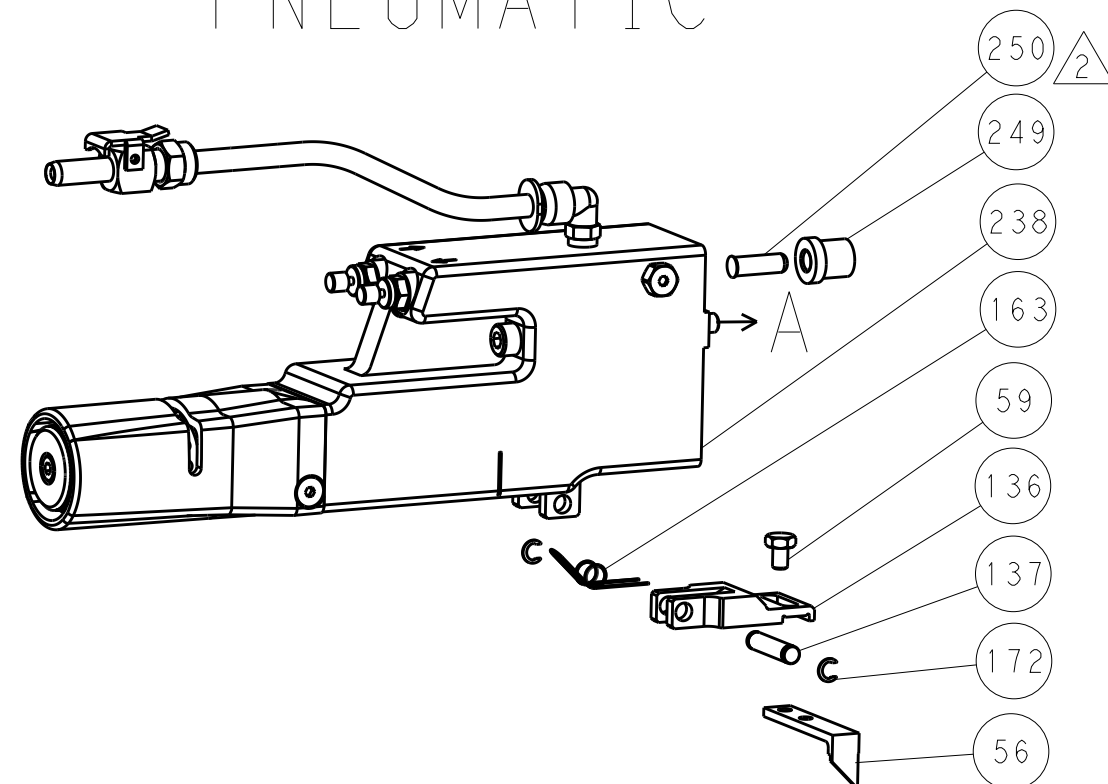
Customer Accessible Production Drawing SCALE 1:2 SHEET 3 OF 4 REV B

LOC		DIST		REVISIONS			
A	66	P	LTM	DESCRIPTION	DATE	DWN	APVD
		-		SEE SHEET 1			

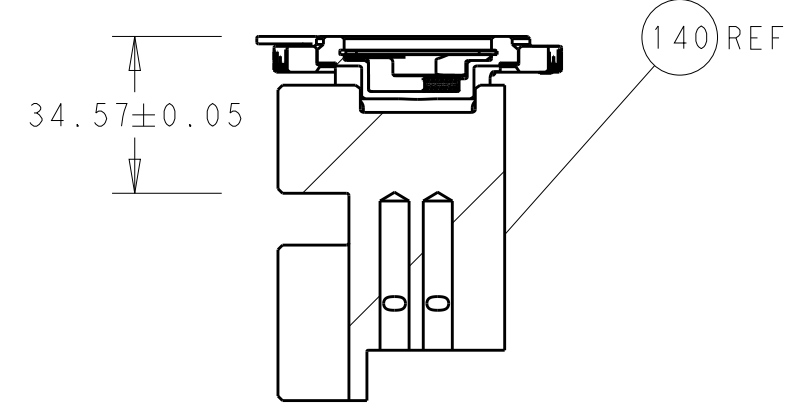
FEED TYPE MECHANICAL



PNEUMATIC

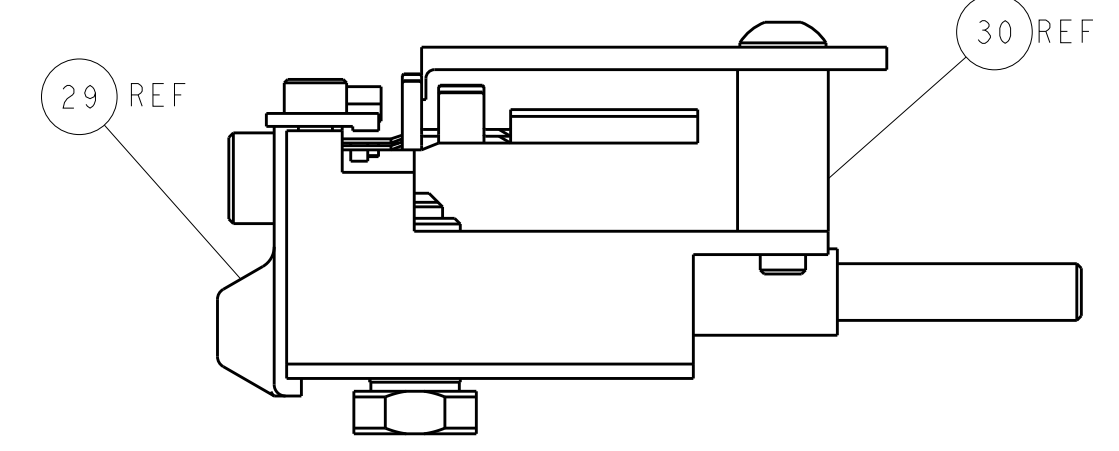


TERMINAL SUPPORT LOCATION



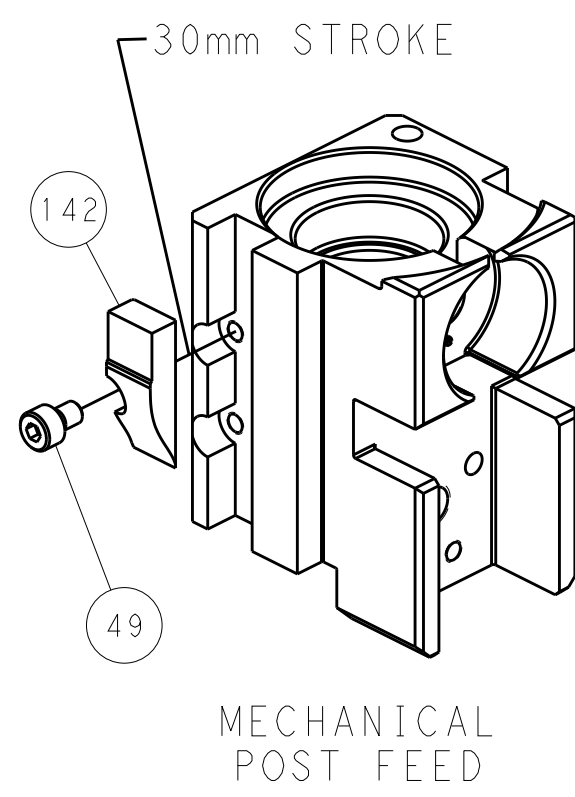
RAM SET-UP

ITEM 30 LOCATED AT REAR HOLES

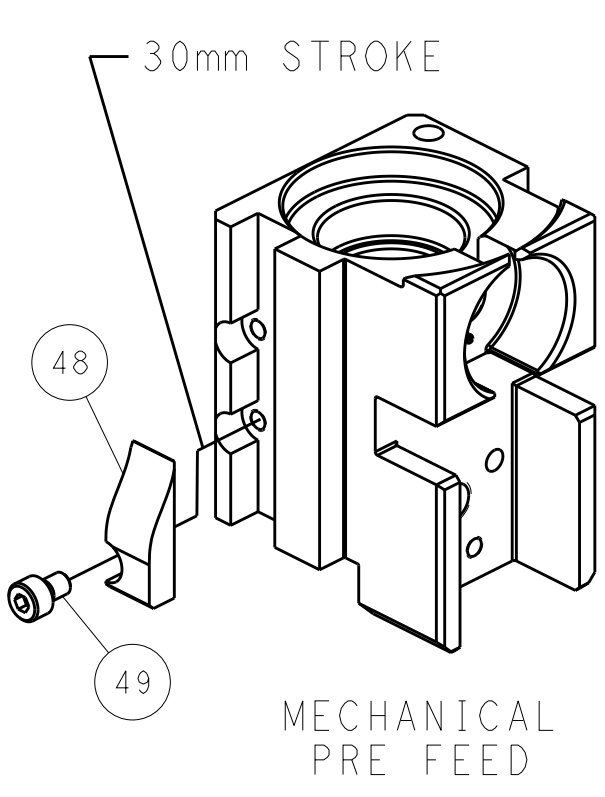


FEED TRACK POSITION GUIDE BY INSULATION BARREL

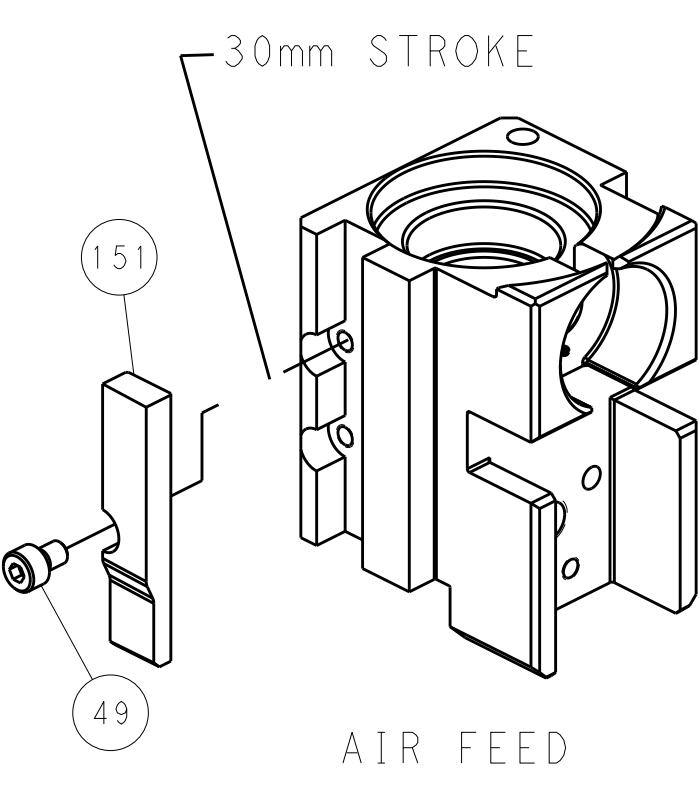
CAM POSITIONS



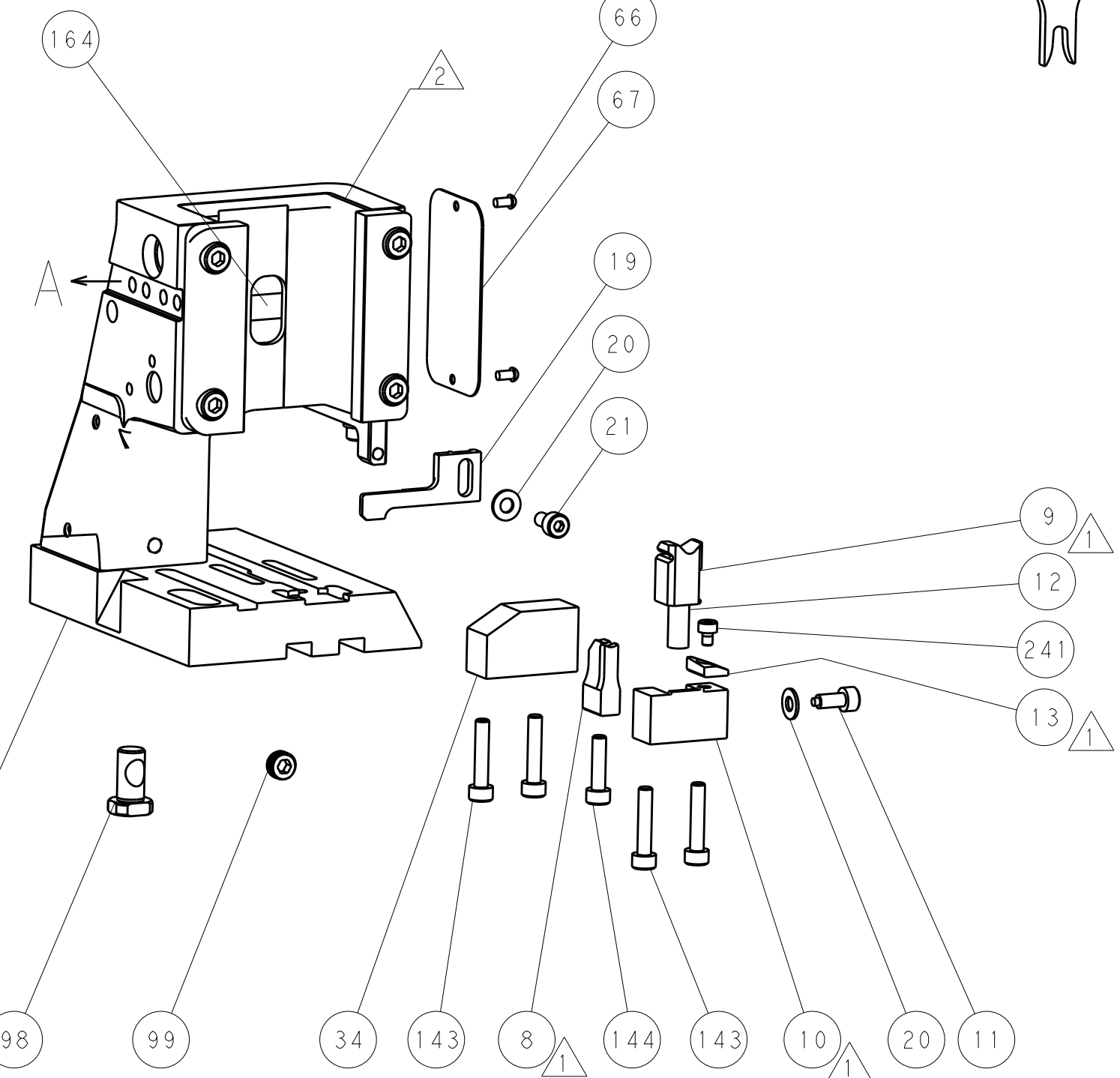
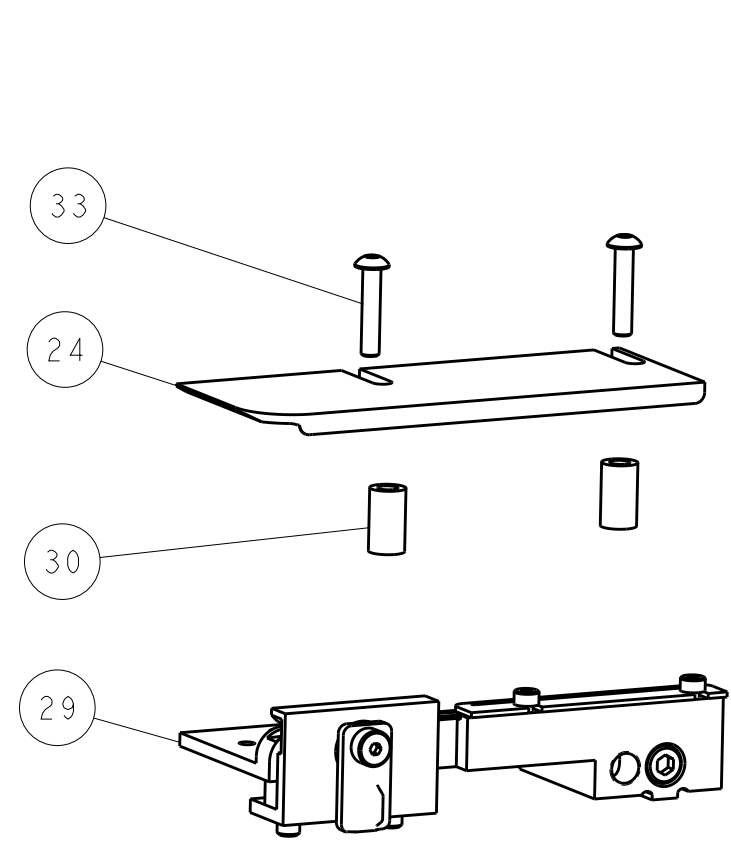
MECHANICAL POST FEED



MECHANICAL PRE FEED



AIR FEED



PACIFIC VERSION
 Shown on sheets 3 of 4 & 4 of 4
 (Atlantic version shown on sheets 1 of 4 & 2 of 4)

DIMENSIONS:		TOLERANCES UNLESS OTHERWISE SPECIFIED:		DWN B. WEAVER 13OCT2015		TE Connectivity	
mm	0 PLC ±	1 PLC ±	2 PLC ±	3 PLC ±	4 PLC ±	5 PLC ±	Harrisburg, PA 17105-3608
	ANGLES	FINISH		CHK C. TOPPER 13OCT2015	NAME		
MATERIAL				APVD C. TOPPER 13OCT2015	Ocean Side Feed Applicator		
				PRODUCT SPEC	SIZE	CAGE CODE	DRAWING NO
				APPLICATION SPEC	A1	00779	2266639
				WEIGHT	Customer Accessible Production Drawing		
				SCALE	1:2	SHEET	4 OF 4
				REV	B		