

PART NUMBER	REVISION	DESCRIPTION	FEED TYPE
2266330-1	B	FINE CRIMP HEIGHT ADJUST	MECHANICAL
2266330-2	B	FINE CRIMP HEIGHT ADJUST	PNEUMATIC
7-2266330-1	B	MECHANICAL AND CRIMP TOOLING KIT	MECHANICAL
7-2266330-2	B	PNEUMATIC AND CRIMP TOOLING KIT	PNEUMATIC
7-2266330-7	A	CRIMP TOOLING KIT	-

ATLANTIC VERSION TERMINATOR INTERFACE ADAPTER



APPLICATOR DATA		
CRIMP	SIZE	TYPE
WIRE	2.55 mm [.100]	F
INSUL	3.50 mm [.138]	F

APPLICATOR INSTRUCTIONS 408-35042

TERMINAL DATA: DELPHI TERMINAL DELPHI CRIMP SPECIFICATION			
TERMINAL NAME: TERM F M/P 280			
WIRE STRIP LENGTH	INSULATION DIAMETER RANGE		
5.16-5.94 mm [.203-.234 IN]	Ø1.80-2.61 mm [.071-.103 IN]		
TERMINAL APPLICATION SPECIFICATION	12066214		
TERMINALS APPLIED			
TE TERMINAL	DELPHI TERMINAL	TE TERMINAL	DELPHI TERMINAL
1448950-1	12066214		

WIRE SIZE	CRIMP HEIGHT mm [INCH]	CRIMP HEIGHT REFERENCE SETTING
1.50mm2	1.75+/-0.05 [1.069+/-0.002]	8.2
1.00mm2	1.65+/-0.05 [1.065+/-0.002]	8.9

- RECOMMENDED SPARE PARTS
- REFER TO SUPPLIED INSTRUCTION SHEET FOR CLEANING, LUBRICATION AND STORAGE OF APPLICATOR.
- APPLY PART NUMBER 2-23419-6 LOCTITE TO THREADS OF ITEM 242.
- CRIMP HEIGHT REFERENCE SETTING WAS THE SETTING USED WHEN THE APPLICATOR WAS QUALIFIED AT THE FACTORY. ADJUSTMENT MAY BE NECESSARY WHEN RUNNING APPLICATOR IN THE FIELD.
- TERMINAL LUBRICANT IS RECOMMENDED.
- 6. UNLESS SPECIFIED OTHERWISE TORQUE VALUES SHALL BE USED PER DOCUMENT, 101-35000.

**\*WARNING**  
ON INSTALLATION, SET WIRE DISC TO CRIMP HEIGHT REFERENCE SETTING FOR LARGEST WIRE SIZE. CRIMP HEIGHT REFERENCE SETTINGS GREATER THAN THE VALUE SHOWN MAY CAUSE DAMAGE TO THE CRIMP TOOLING, REFER TO THE INSTRUCTION SHEET FOR PROPER SETUP AND ADJUSTMENTS.

**ATLANTIC VERSION**  
Shown on sheets 1 of 4 & 2 of 4  
(Pacific version shown on sheets 3 of 4 & 4 of 4)

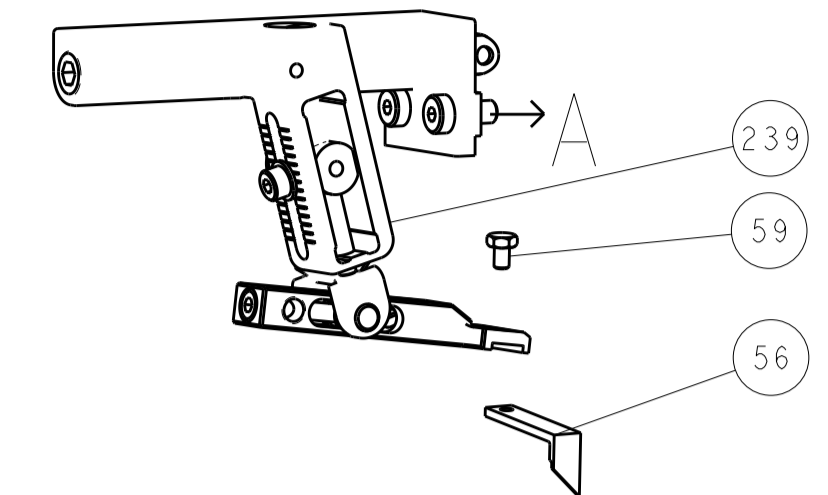
LOC	DIST	REVISIONS			
A	66	REV	DATE	BY	CHKD
		A	RELEASED	23JUL2014	RK TE
		B	ECR-18-007516	16MAY2016	MZ JDG

-	1	-	1	-	2119640-1	PUSH ROD, AIR FEED	250				
-	1	-	1	-	1803259-1	BUSHING, FLANGED	249				
-	1	-	1	-	2119641-1	FEED CAM, AIR FEED	248				
-	1	1	1	1	2119082-4	CAM, SNAIL, INSULATION ADJUSTMENT	244				
-	1	1	1	1	2079764-1	WASHER, WAVE SPRING, CREST-TO-CREST	243				
-	1	1	1	1	2119083-1	RETAINER, INSULATION DIAL	242				
-	1	1	1	1	7-18023-7	SCR, SKT HD CAP M3 X 4.0	241				
-	-	1	-	1	2119580-1	MECHANICAL FEED ASSEMBLY	239				
-	1	-	1	-	2063440-1	AIR FEED MODULE	238				
-	2	-	2	-	21045-3	RING, RETAIN, EXTERN, 3/16 CRESCENT	172				
-	REF	REF	REF	REF	994970-2	COUNTER, MAGNETIC	164				
-	1	-	1	-	240638-1	SPRING, FEED FINGER	163				
-	1	-	1	-	3-23627-7	PIN, RETAIN, GRVD, 3/16 X .854	137				
-	1	-	1	-	2119799-1	HOLDER, FEED FINGER, AF	136				
-	1	1	1	1	2119955-1	ASSY, LUBRICATOR, SIDE FEED	113				
-	1	1	1	1	2844908-1	SCREW, LOCKING	99				
-	1	1	1	1	2844907-1	POST, LOCKING	98				
-	1	1	1	1	318563-1	GUARD, FRONT CHIP	89				
-	1	1	1	1	455888-5	SPACER, CRIMPER	82				
-	1	1	1	1	1803607-1	DOCUMENTATION PACKAGE	71				
-	1	1	1	1	2119740-1	TAG, IDENTIFICATION	67				
-	2	2	2	2	2168078-1	SCREW, DRIVE, RH, RoHS, 2 x .188	66				
-	1	1	1	1	2168083-2	SCR, SKT HD CAP, RoHS, M4 X 8.0	60				
-	1	1	1	1	5-18022-5	SCR, HEX HD CAP, M4 X 6.0	59				
-	1	1	1	1	1633081-1	PAWL, FEED	56				
-	4	4	4	4	2168083-3	SCR, SKT HD CAP, RoHS, M4 X 12.0	54				
-	2	2	2	2	1-2168083-0	SCR, SKT HD CAP, RoHS, M4 X 10	53				
-	1	1	1	1	5018030-1	NUT, HEX, REG, RoHS, M3	52				
-	1	1	1	1	811242-5	BUMPER, HOLD DOWN	51				
-	1	1	1	1	690753-2	SPACER, TONKER	50				
-	1	2	1	2	18023-9	SCR, SKT HD CAP M4 X 6.0	49				
-	-	1	-	1	2119652-1	FEED CAM, PRE FEED	48				
-	-	1	-	1	2119653-1	FEED CAM, POST FEED	47				
-	1	1	1	1	1803583-9	APPLICATOR BASIC ASSEMBLY, SF	46				
-	1	1	1	1	1803515-1	RAM ASSEMBLY, SF ATLANTIC	44				
-	1	1	1	1	1803602-1	SCR, BHSC, RoHS (M8 X 25)	41				
-	1	1	1	1	1752356-1	SUPPORT, TERMINAL	34				
-	2	2	2	2	2079383-5	SCR, BHSC, RoHS (M4 X 20)	33				
-	2	2	2	2	2-2844962-8	SPACER, CYLINDRICAL, STRIP GUIDE	30				
-	1	1	1	1	2844992-1	ASSEMBLY, STRIP GUIDE	29				
-	1	1	1	1	455888-3	SPACER, CRIMPER	28				
-	1	1	1	1	1320928-2	STRIP GUIDE	24				
-	1	1	1	1	2168083-2	SCR, SKT HD CAP, RoHS, M4 X 8.0	21				
-	1	1	1	1	1-18028-2	WASHER, FLAT, REG M4	20				
-	1	1	1	1	2119533-1	STRIPPER, SIDE FEED	19				
-	1	1	1	1	2119806-1	INSERT, SHEAR	13				
-	1	1	1	1	3-22280-3	SPRING, COMPRESSION	12				
-	1	1	1	1	1-356885-4	STOP, SHEAR	11				
-	1	1	1	1	2119805-1	SHEAR HOLDER, FRONT	10				
-	1	1	1	1	318707-1	FLOATING SHEAR, FRONT	9				
-	1	2	2	1	1	4-1803054-8	ANVIL, COMBINATION	8			
-	-	-	-	-	-	-	7				
-	-	-	-	-	-	-	6				
-	1	1	1	1	2119757-8	DEPRESSOR, SHEAR	5				
-	1	1	1	1	2-238011-7	BLOCK, CRIMPER SPACER	4				
-	1	2	2	1	1	1-1803016-8	CRIMPER, INSULATION F	3			
-	1	1	1	1	455888-9	SPACER, CRIMPER	2				
-	1	2	2	1	1	2-456407-6	CRIMPER, WIRE PREMIUM	1			
-	77	-	72	-	-	2	-	1	PART NO	DESCRIPTION	ITEM NO

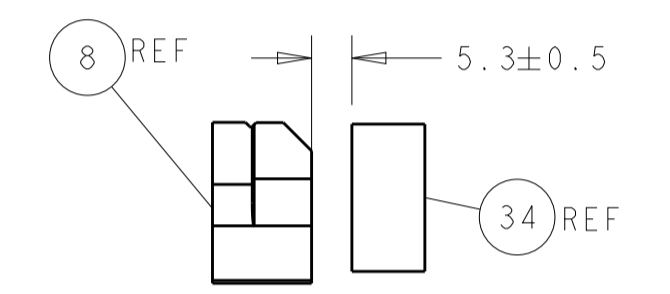
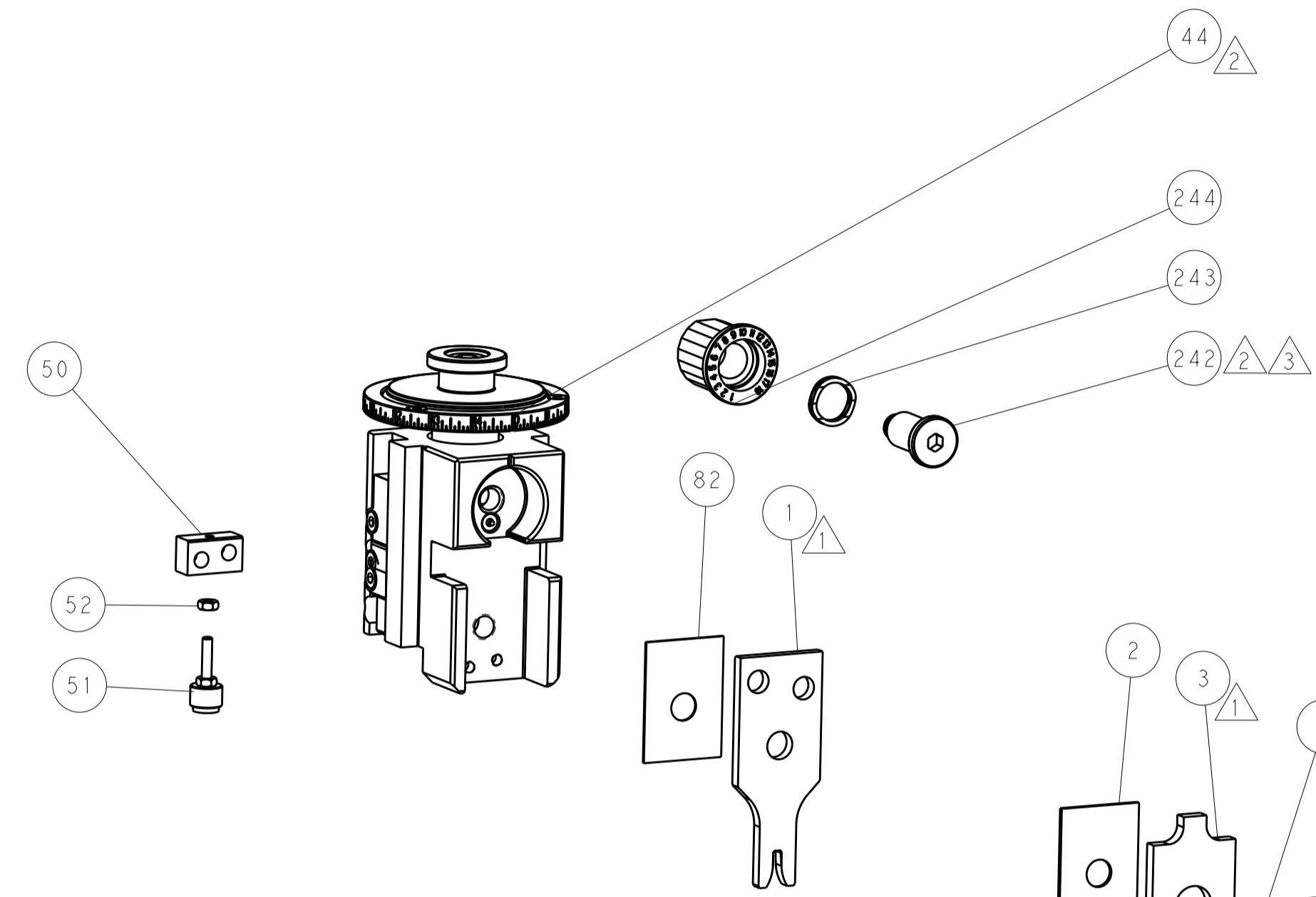
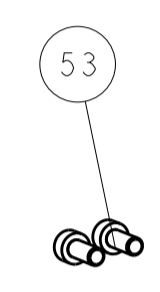
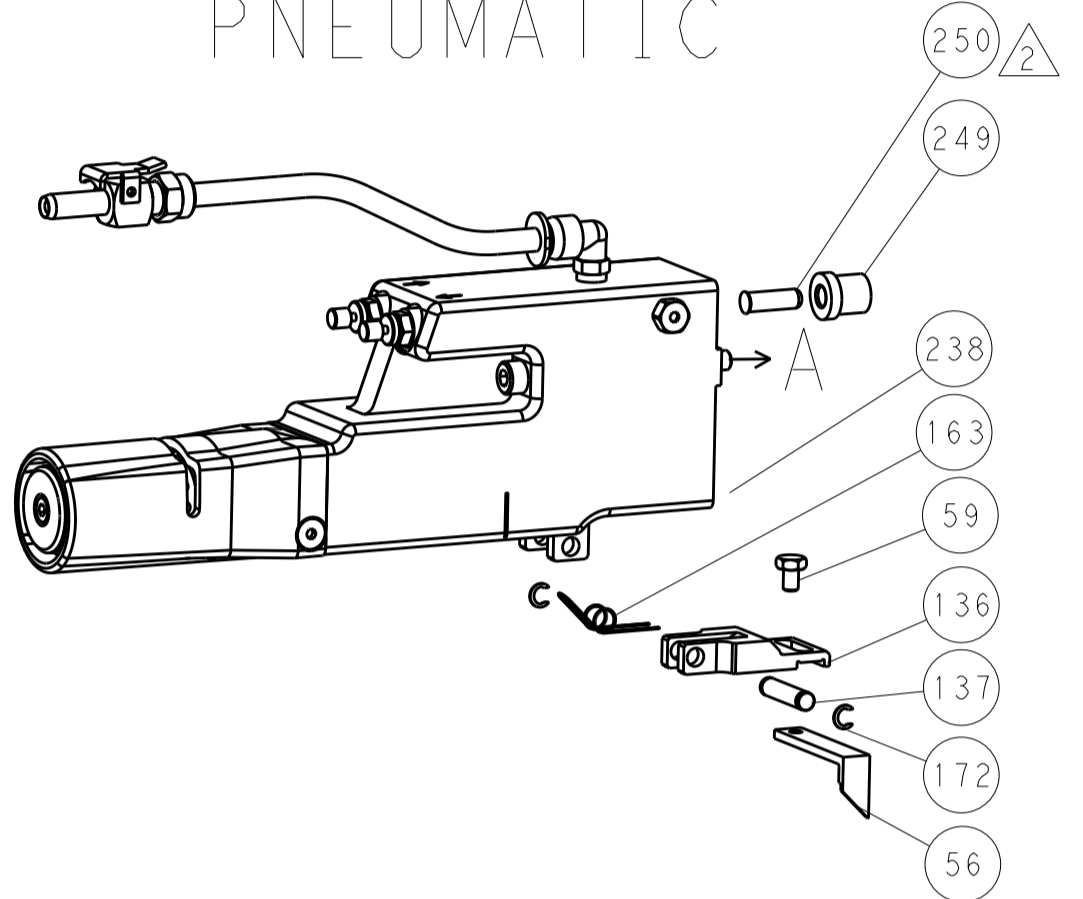
DIMENSIONS:		TOLERANCES UNLESS OTHERWISE SPECIFIED:		OWN: STAKEM 16JUNE2014	TE Connectivity Harrisburg, PA 17105-3608
mm	0 PLC ±	1 PLC ±	2 PLC ±	CHK: G. BAILEY 16JUNE2014	
MATERIAL:		FINISH:		APVD: T. ELRLN 16JUNE2014	NAME: Ocean Side Feed Applicator
WEIGHT:		SCALE: 1:2		SHEET 1 OF 4	REV B

LOC	DIST	REV	DATE	BY	APPV
A	66				

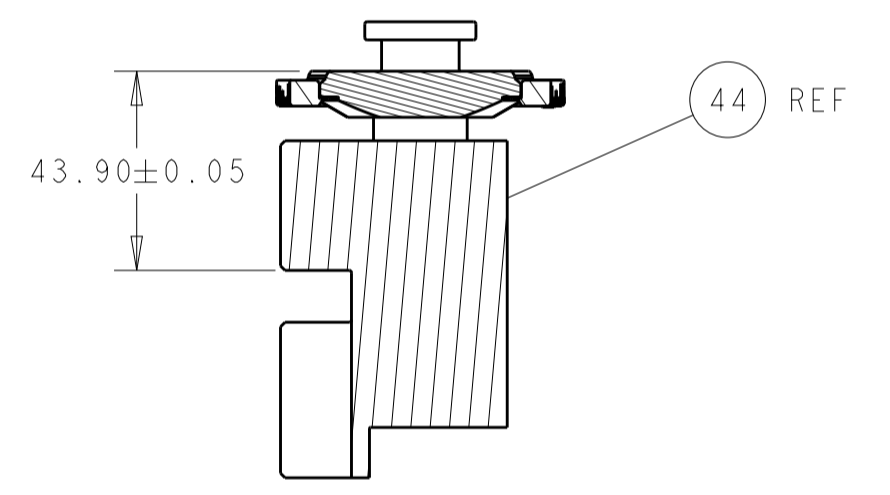
# FEED TYPE MECHANICAL



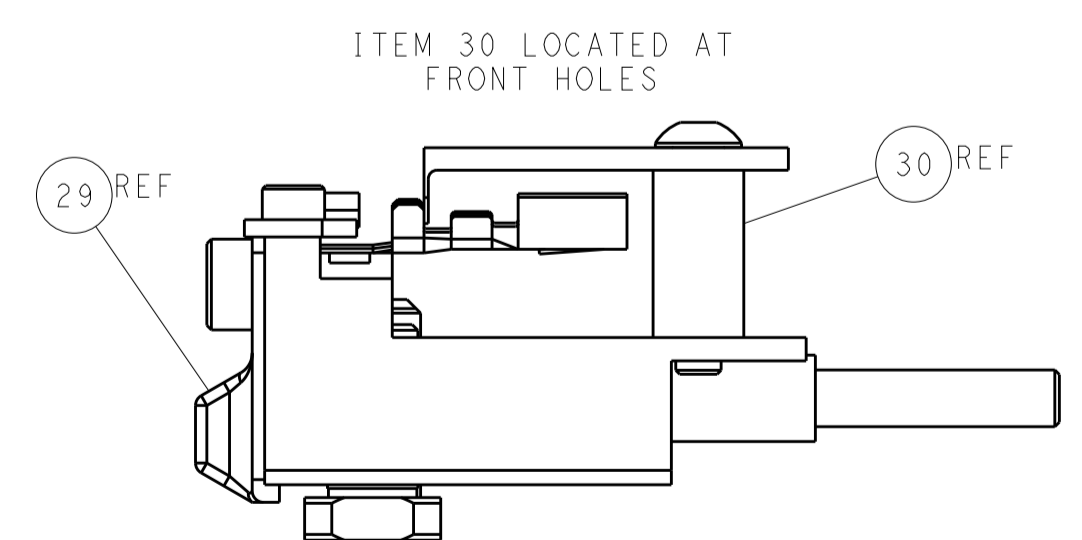
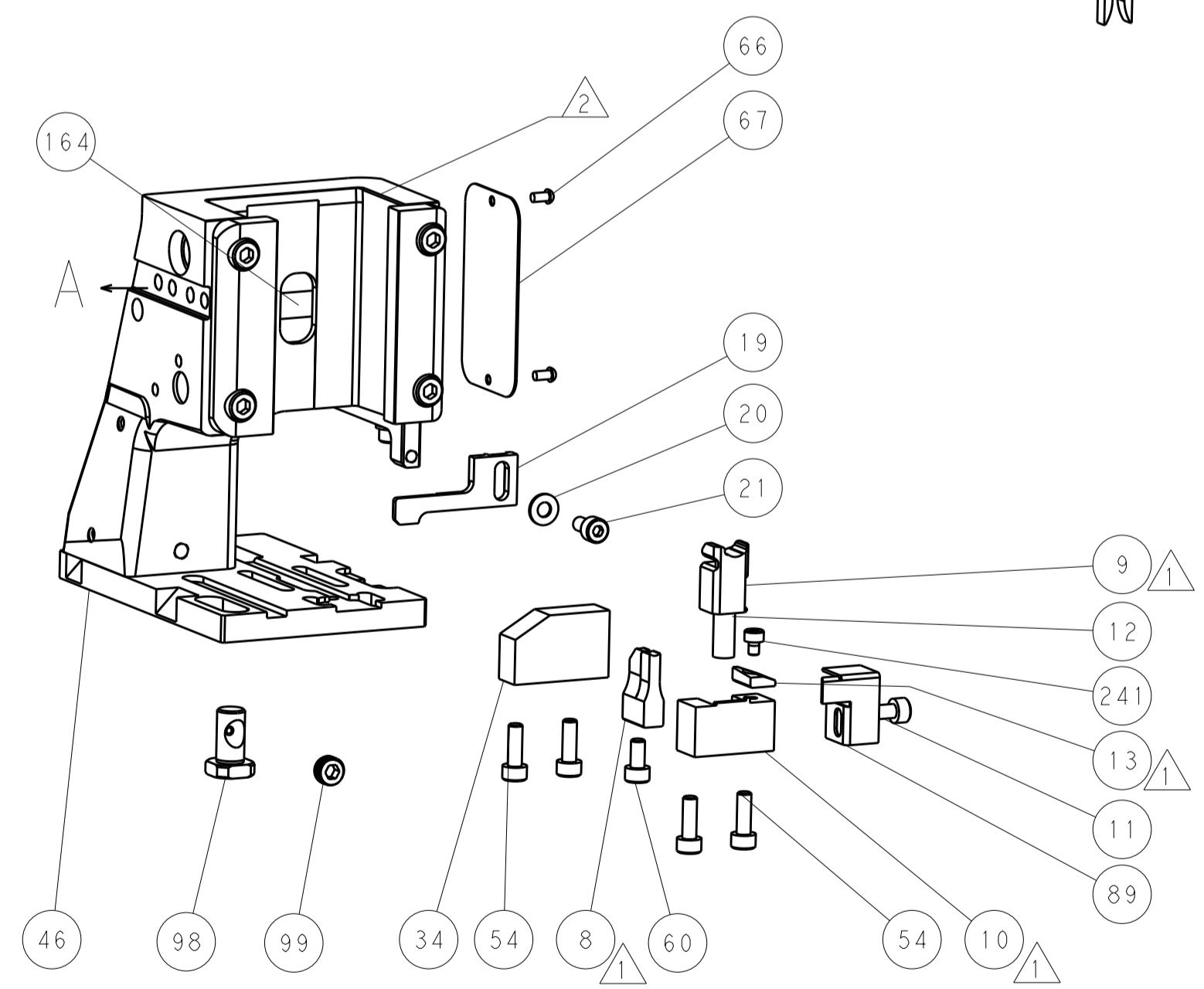
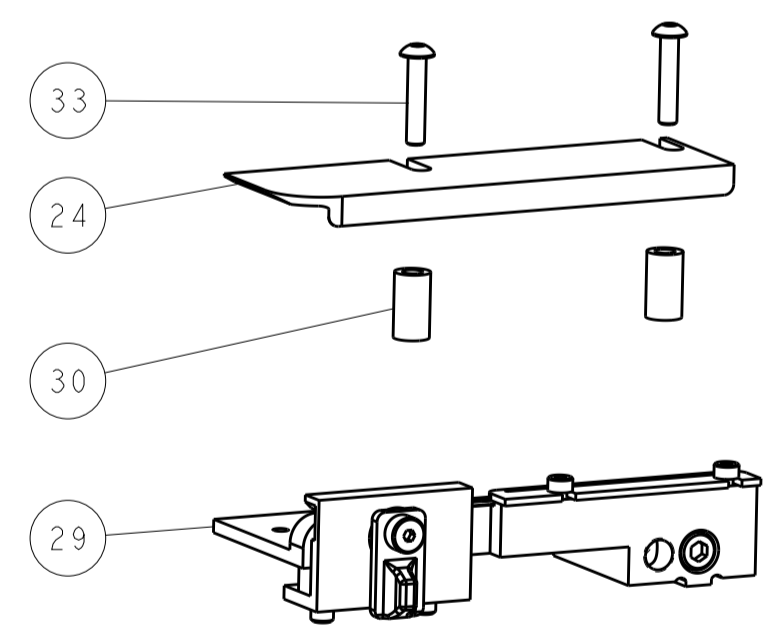
# PNEUMATIC



TERMINAL SUPPORT LOCATION

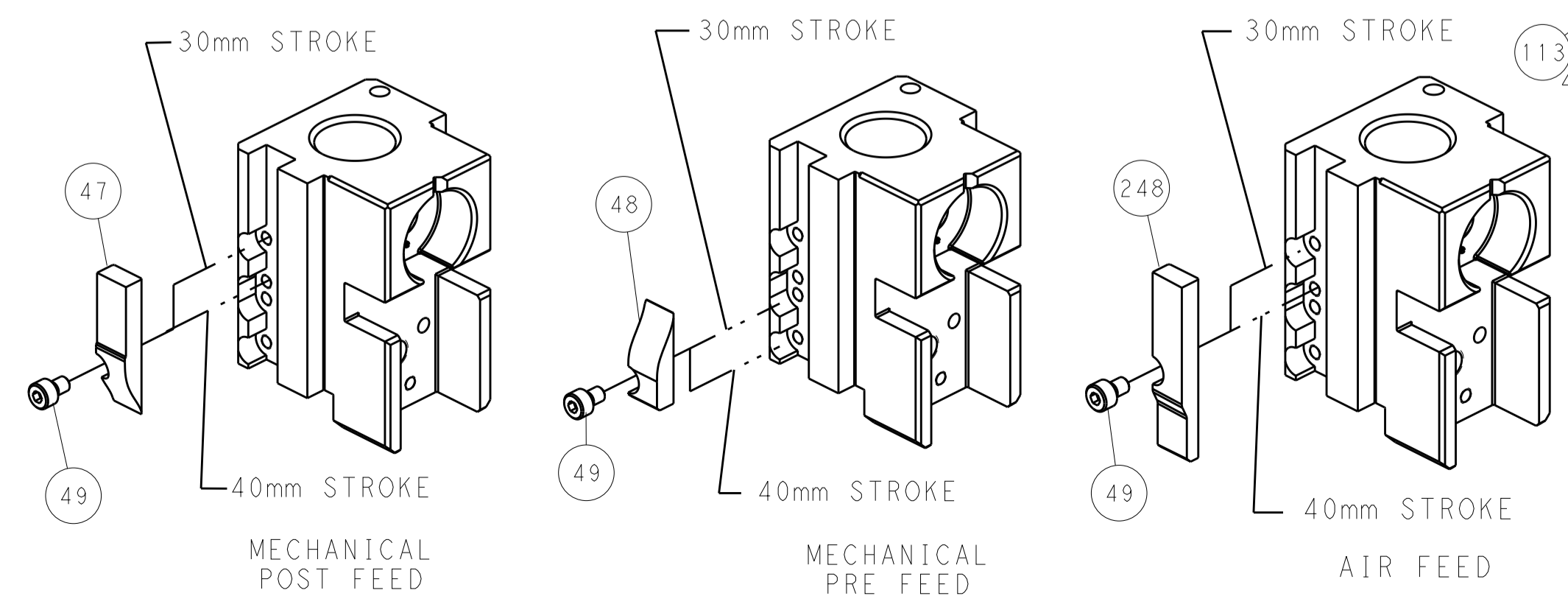


RAM SET-UP



FEED TRACK POSITION GUIDE BY INSULATION BARREL

# CAM POSITIONS



**ATLANTIC VERSION**  
 Shown on sheets 1 of 4 & 2 of 4  
 (Pacific version shown on sheets 3 of 4 & 4 of 4)

DIMENSIONS:		TOLERANCES UNLESS OTHERWISE SPECIFIED:		DWG: STAKEM 16JUNE2014		TE Connectivity	
mm		0 PLC ±		CHK: G. BAILEY 16JUNE2014		Harrisburg, PA 17105-3608	
Ø		1 PLC ±		APPV: T. ERLIN 16JUNE2014		NAME: Ocean Side Feed Applicator	
H		2 PLC ±		PRODUCT SPEC:		SIZE: CAGE CODE: DRAWING NO:	
D		3 PLC ±		APPLICATION SPEC:		RESTRICTED TO:	
R		4 PLC ±		WEIGHT:		A1 00779 ©=2266330	
ANGLES		FINISH:		Customer Accessible Production Drawing		SCALE: 1:2 SHEET 2 OF 4 REV B	

PART NUMBER	REVISION	DESCRIPTION	FEED TYPE
2-2266330-1	B	FINE CRIMP HEIGHT ADJUST	MECHANICAL
2-2266330-2	B	FINE CRIMP HEIGHT ADJUST	PNEUMATIC
7-2266330-7	A	CRIMP TOOLING KIT	-

PACIFIC VERSION TERMINATOR  
 INTERFACE ADAPTER



APPLICATOR DATA		
CRIMP	SIZE	TYPE
WIRE	2.55 mm [.100]	F
INSUL	3.50 mm [.138]	F

APPLICATOR INSTRUCTIONS  
 408-35042

TERMINAL DATA: DELPHI TERMINAL DELPHI CRIMP SPECIFICATION			
TERMINAL NAME: TERM F M/P 280			
WIRE STRIP LENGTH		INSULATION DIAMETER RANGE	
5.16-5.94 mm [1.203-.234 IN]		Ø1.80-2.61 mm [0.071-.103 IN]	
TERMINAL APPLICATION SPECIFICATION	12066214	-	-
TERMINALS APPLIED			
TE TERMINAL	DELPHI TERMINAL	TE TERMINAL	DELPHI TERMINAL
1448950-1	12066214		

WIRE SIZE	CRIMP HEIGHT mm [INCH]	CRIMP HEIGHT REFERENCE SETTING
1.50mm2	1.75+/-0.05 [0.069+/-0.002]	8.2
1.00mm2	1.65+/-0.05 [0.065+/-0.002]	8.9

- RECOMMENDED SPARE PARTS
  - REFER TO SUPPLIED INSTRUCTION SHEET FOR CLEANING, LUBRICATION AND STORAGE OF APPLICATOR.
  - APPLY PART NUMBER 2-23419-6 LOCTITE TO THREADS OF ITEM 242.
  - CRIMP HEIGHT REFERENCE SETTING WAS THE SETTING USED WHEN THE APPLICATOR WAS QUALIFIED AT THE FACTORY. ADJUSTMENT MAY BE NECESSARY WHEN RUNNING APPLICATOR IN THE FIELD.
  - TERMINAL LUBRICANT IS RECOMMENDED.
6. UNLESS SPECIFIED OTHERWISE TORQUE VALUES SHALL BE USED PER DOCUMENT, 101-35000.

**\*WARNING**  
 ON INSTALLATION, SET WIRE DISC TO CRIMP HEIGHT REFERENCE SETTING FOR LARGEST WIRE SIZE. CRIMP HEIGHT REFERENCE SETTINGS GREATER THAN THE VALUE SHOWN MAY CAUSE DAMAGE TO THE CRIMP TOOLING, REFER TO THE INSTRUCTION SHEET FOR PROPER SETUP AND ADJUSTMENTS.

PACIFIC VERSION  
 Shown on sheets 3 of 4 & 4 of 4  
 (Atlantic version shown on sheets 1 of 4 & 2 of 4)

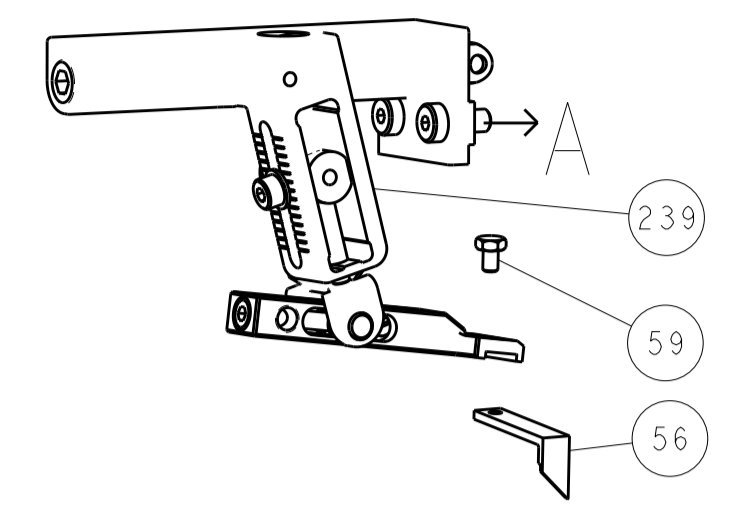
LOC	DIST	REV	DATE	BY	APPD
A	66				

REVISIONS					
REV	DATE	DESCRIPTION	DATE	BY	APPD
-	-	SEE SHEET 1	-	-	-
-	1	2119640-1			250
-	1	1803259-1			249
-	1	2119082-4			244
-	1	2079764-1			243
-	1	2119083-1			242
-	1	7-18023-7			241
-	-	2119580-1			239
-	1	2063440-1			238
-	2	21045-3			172
-	REF	994970-2			164
-	1	240638-1			163
-	1	2119641-2			151
-	1	2168083-8			144
-	4	2168083-9			143
-	-	2119653-2			142
-	1	1-1803583-0			141
-	1	1803516-1			140
-	1	3-23627-7			137
-	1	2119799-1			136
-	1	2119955-1			113
-	1	2844908-1			99
-	1	2844907-1			98
-	1	318563-1			89
-	1	455888-5			82
-	1	1803607-1			71
-	1	2119740-1			67
-	2	2168078-1			66
-	1	5-18022-5			59
-	1	1633081-1			56
-	2	1-2168083-0			53
-	1	5018030-1			52
-	1	811242-5			51
-	1	690753-2			50
-	1	18023-9			49
-	-	2119652-1			48
-	1	1803602-1			41
-	1	1752356-1			34
-	2	2079383-5			33
-	2	2-2844962-8			30
-	1	2844992-1			29
-	1	455888-3			28
-	1	1320928-2			24
-	1	2168083-2			21
-	1	1-18028-2			20
-	1	2119533-1			19
-	1	2119806-1			13
-	1	3-22280-3			12
-	1	1-356885-4			11
-	1	2119805-1			10
-	1	318707-1			9
1	1	4-1803054-8			8
-	-	-			7
-	-	-			6
-	1	2119757-8			5
-	1	2-238011-7			4
1	1	1-1803016-8			3
-	1	455888-9			2
1	1	2-456407-6			1

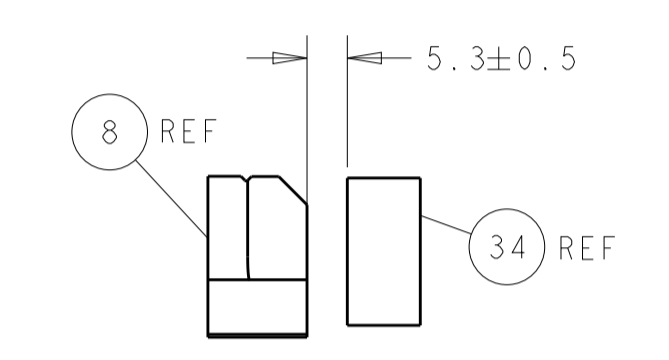
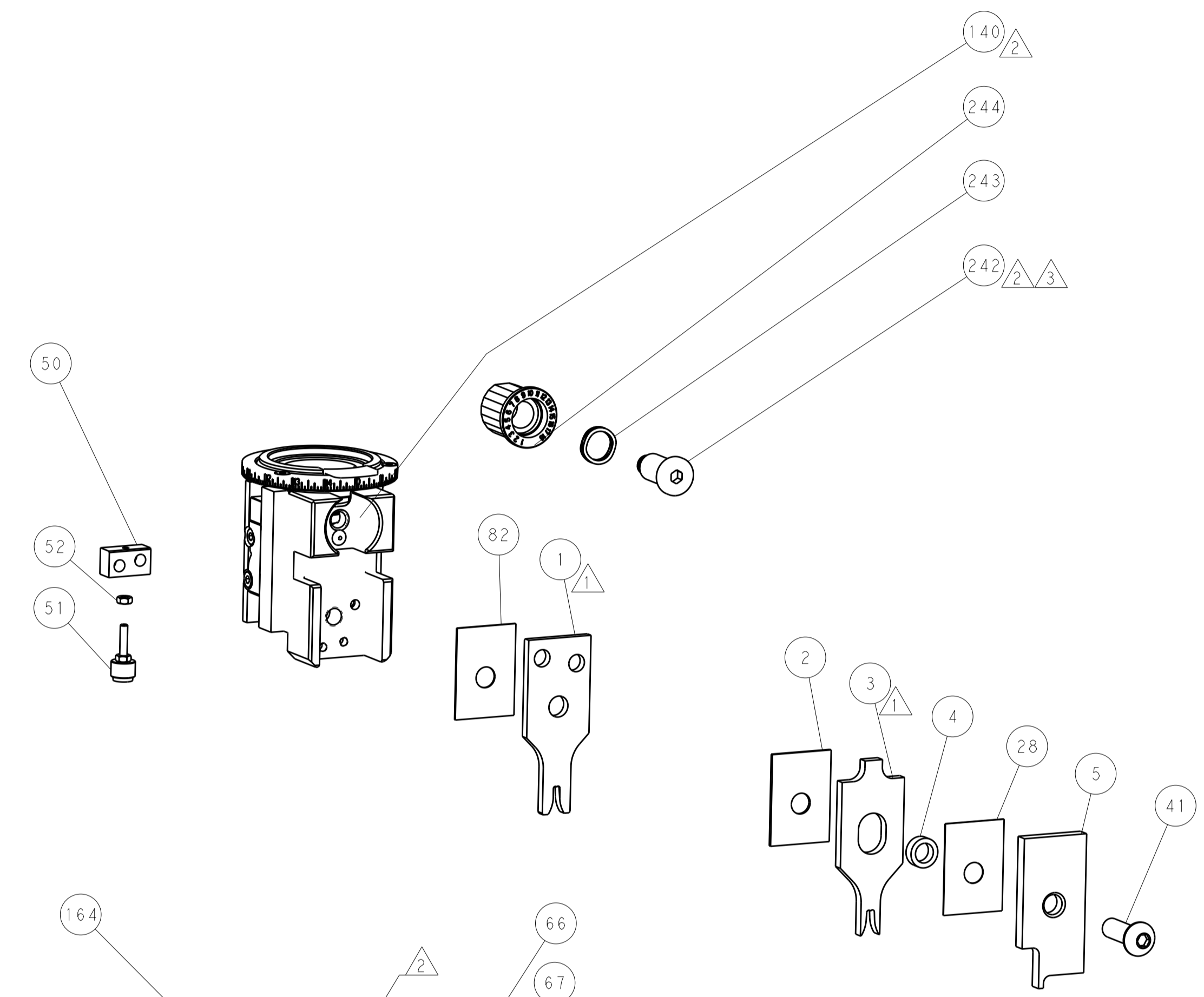
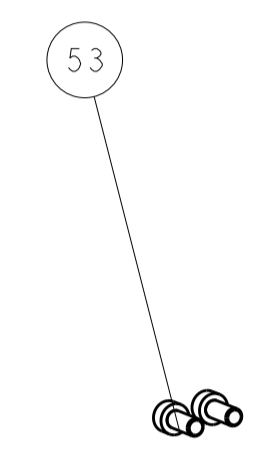
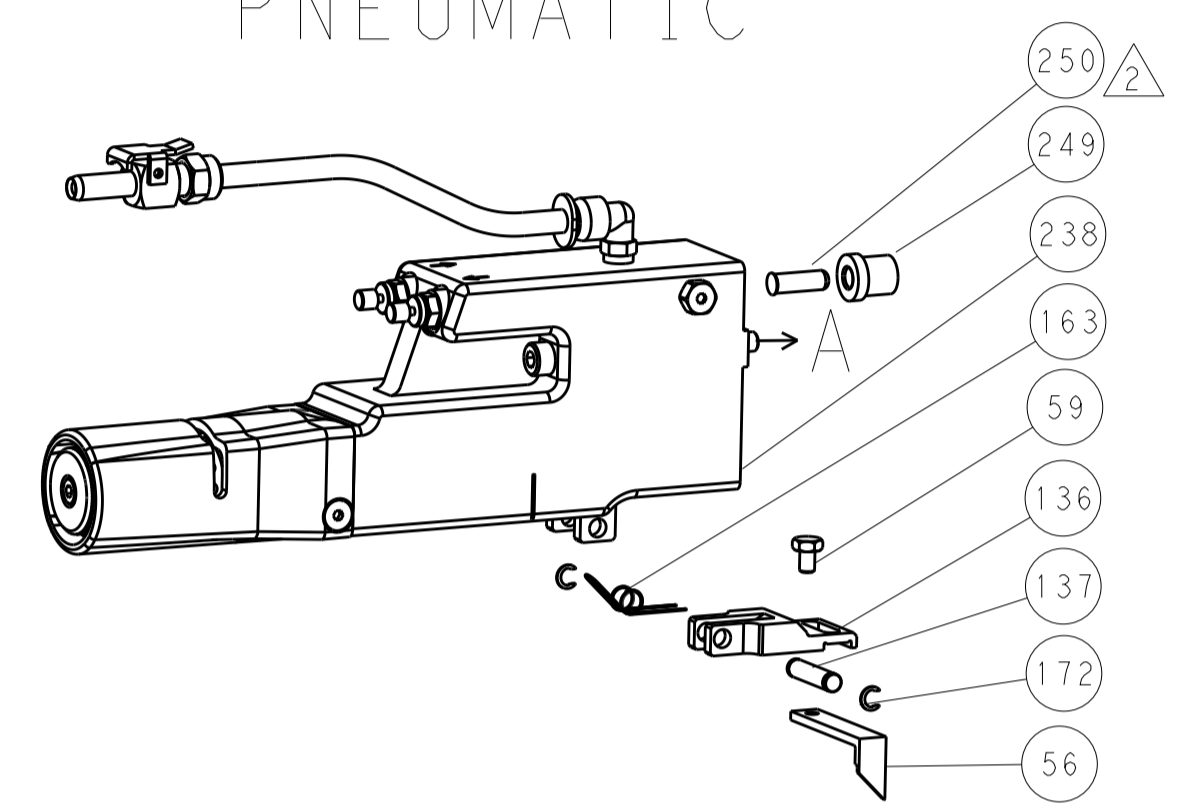
DIMENSIONS:		TOLERANCES UNLESS OTHERWISE SPECIFIED:		DATE: 16 JUNE 2014	
mm	0 PLC ±	1 PLC ±	2 PLC ±	CHK: STAKEM	16 JUNE 2014
	3 PLC ±	4 PLC ±	ANGLES ±	CHK: G. BAILEY	16 JUNE 2014
	FINISH			APPD: T. ELRLN	16 JUNE 2014
MATERIAL:		WEIGHT:		NAME: Ocean Side Feed Applicator	
				SIZE: A1 00779 C=2266330	
Customer Accessible Production Drawing			SCALE: 1:2	SHEET: 3 OF 4	REV: B

LOC		DIST		REVISIONS				
P	LTN	DATE	DMN	APVD	DESCRIPTION	DATE	DMN	APVD
-	-	SEE SHEET 1	-	-	-	-	-	-

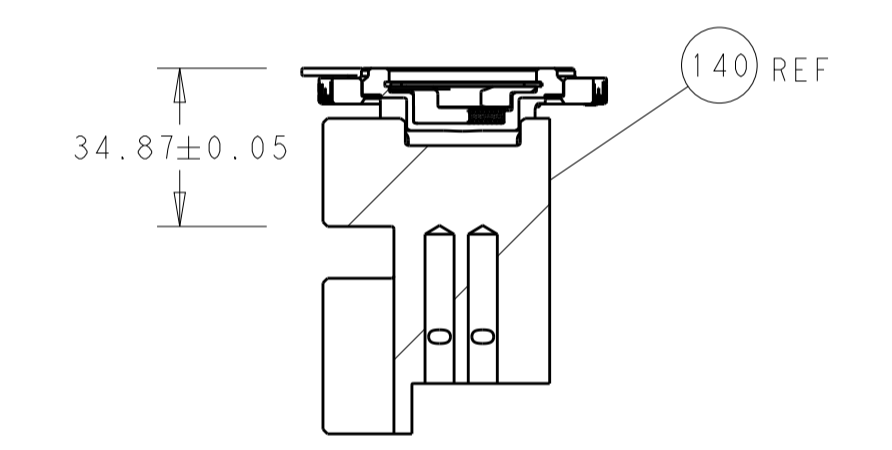
# FEED TYPE MECHANICAL



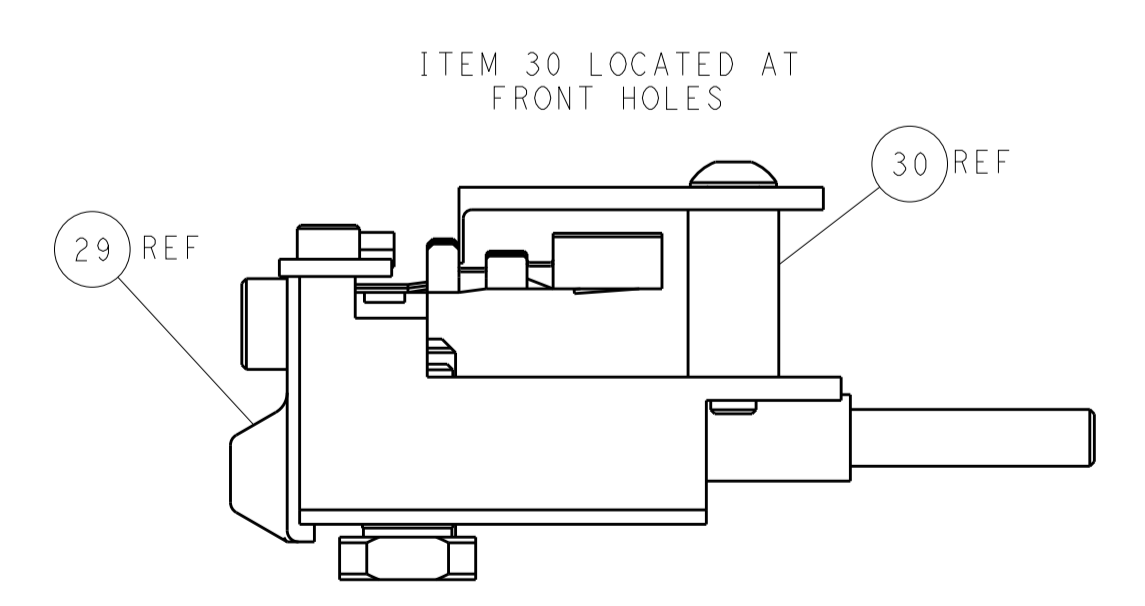
# PNEUMATIC



TERMINAL SUPPORT LOCATION

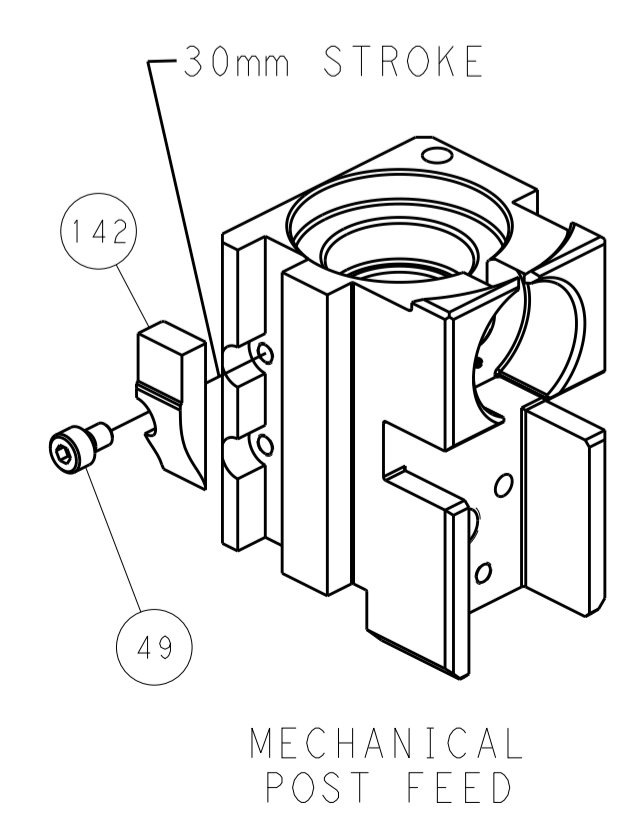


RAM SET-UP

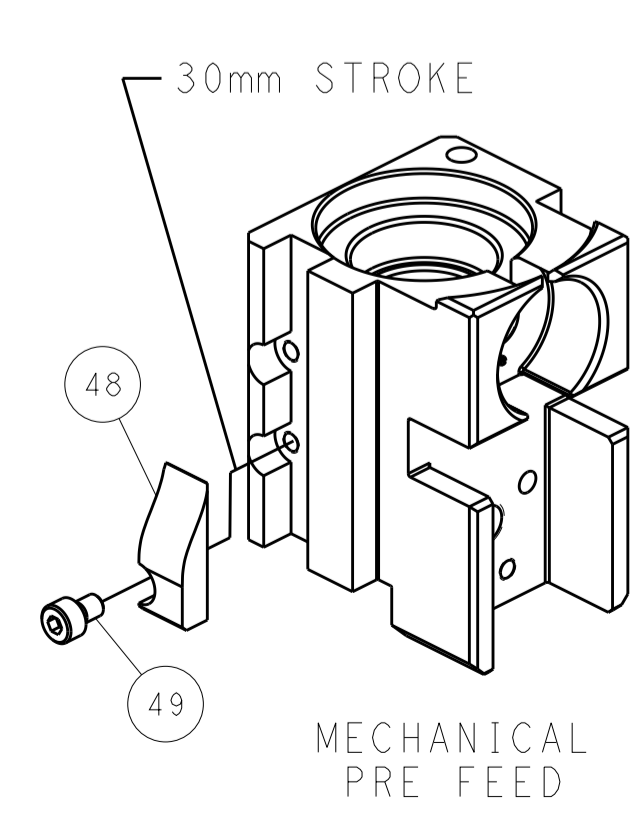


FEED TRACK POSITION  
GUIDE BY INSULATION BARREL

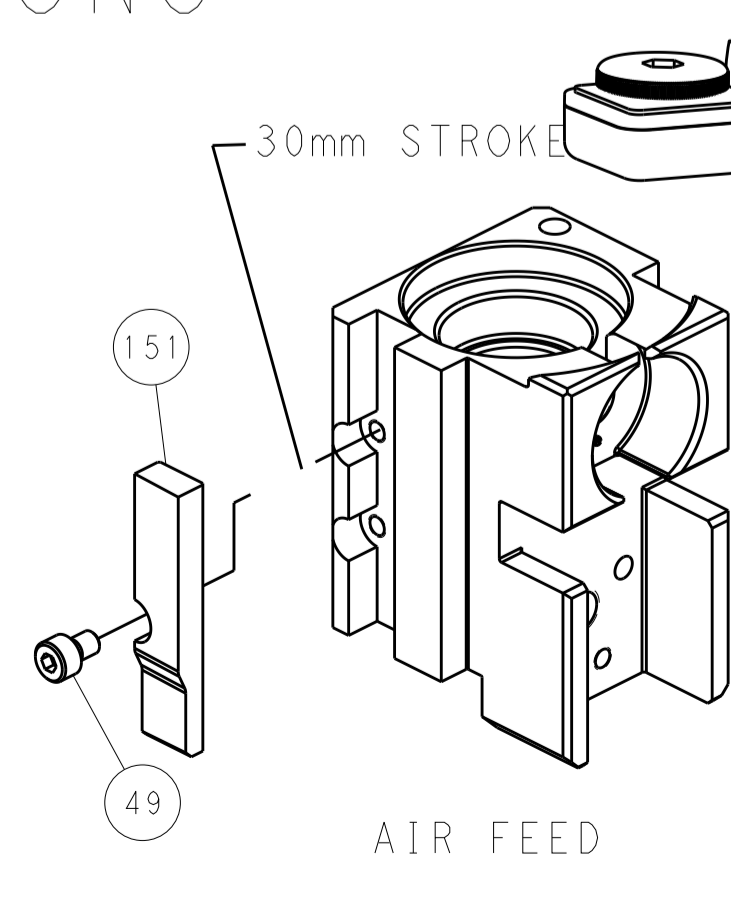
# CAM POSITIONS



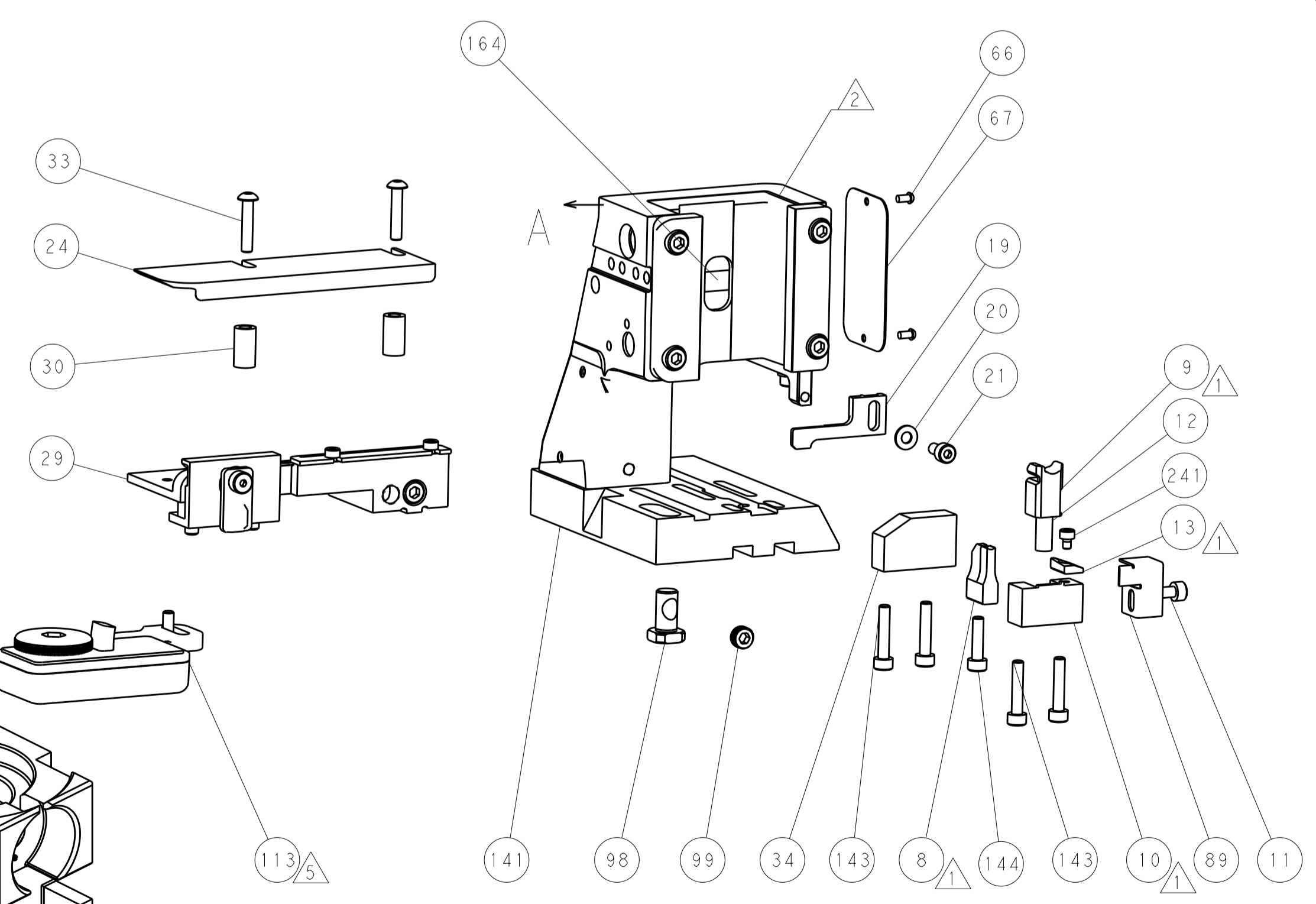
MECHANICAL  
POST FEED



MECHANICAL  
PRE FEED



AIR FEED



**PACIFIC VERSION**  
 Shown on sheets 3 of 4 & 4 of 4  
 (Atlantic version shown on sheets 1 of 4 & 2 of 4)

DIMENSIONS:		TOLERANCES UNLESS OTHERWISE SPECIFIED:		DWG: STAKEM 16JUNE2014		TE Connectivity	
mm	0 PLC ±	1 PLC ±	2 PLC ±	3 PLC ±	4 PLC ±	5 PLC ±	Harrisburg, PA 17105-3608
MATERIAL:		FINISH:		CHK: G. BAILEY 16JUNE2014		NAME: Ocean Side Feed Applicator	
APVD: T. ELBIN 16JUNE2014		PRODUCT SPEC:		APPL. SPEC:		SIZE: CAGE CODE: DRAWING NO: RESTRICTED TO	
WEIGHT:		SCALE: 1:2		A1 00779 ©=2266330		SHEET 4 OF 4 REV B	
Customer Accessible Production Drawing							