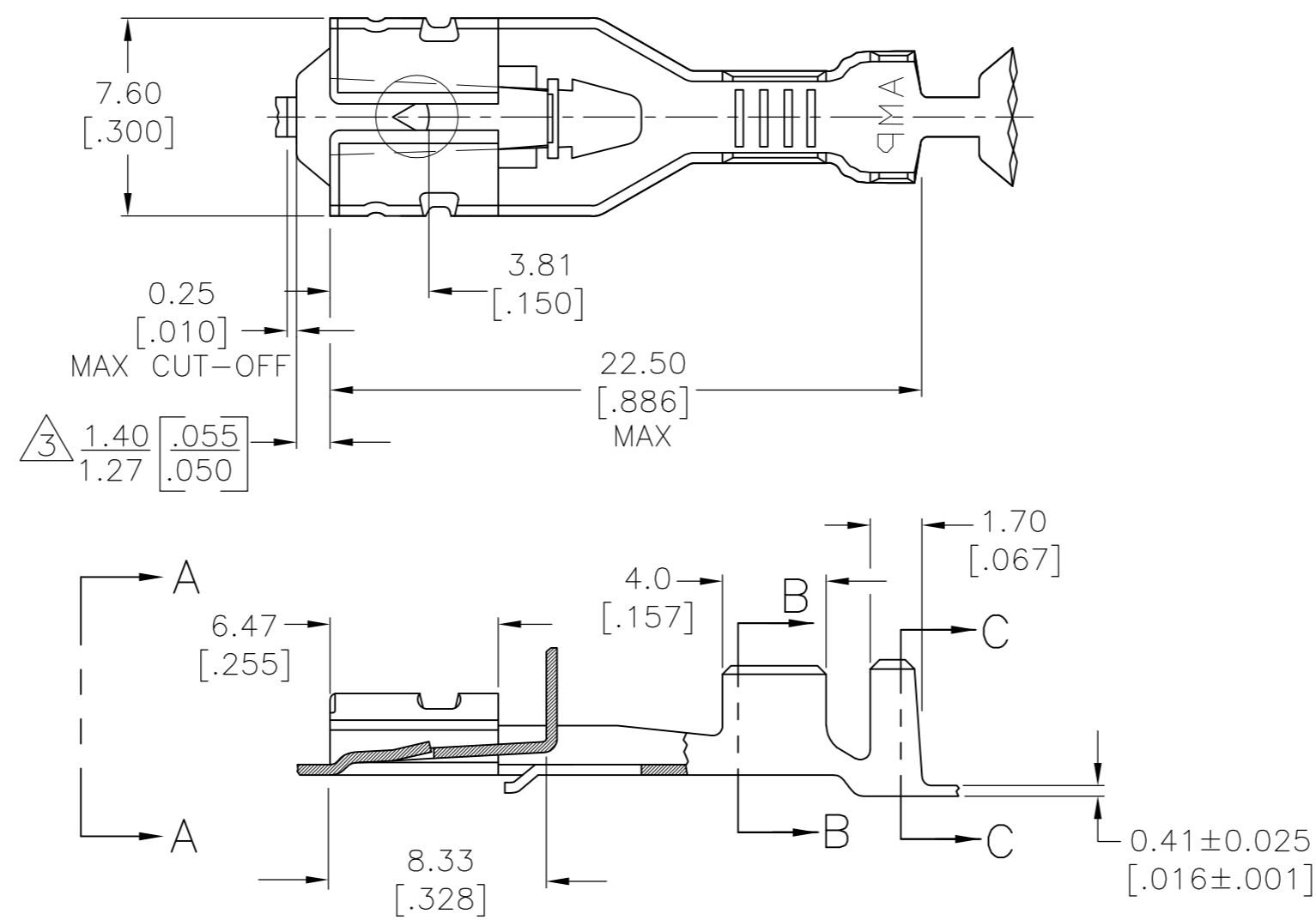
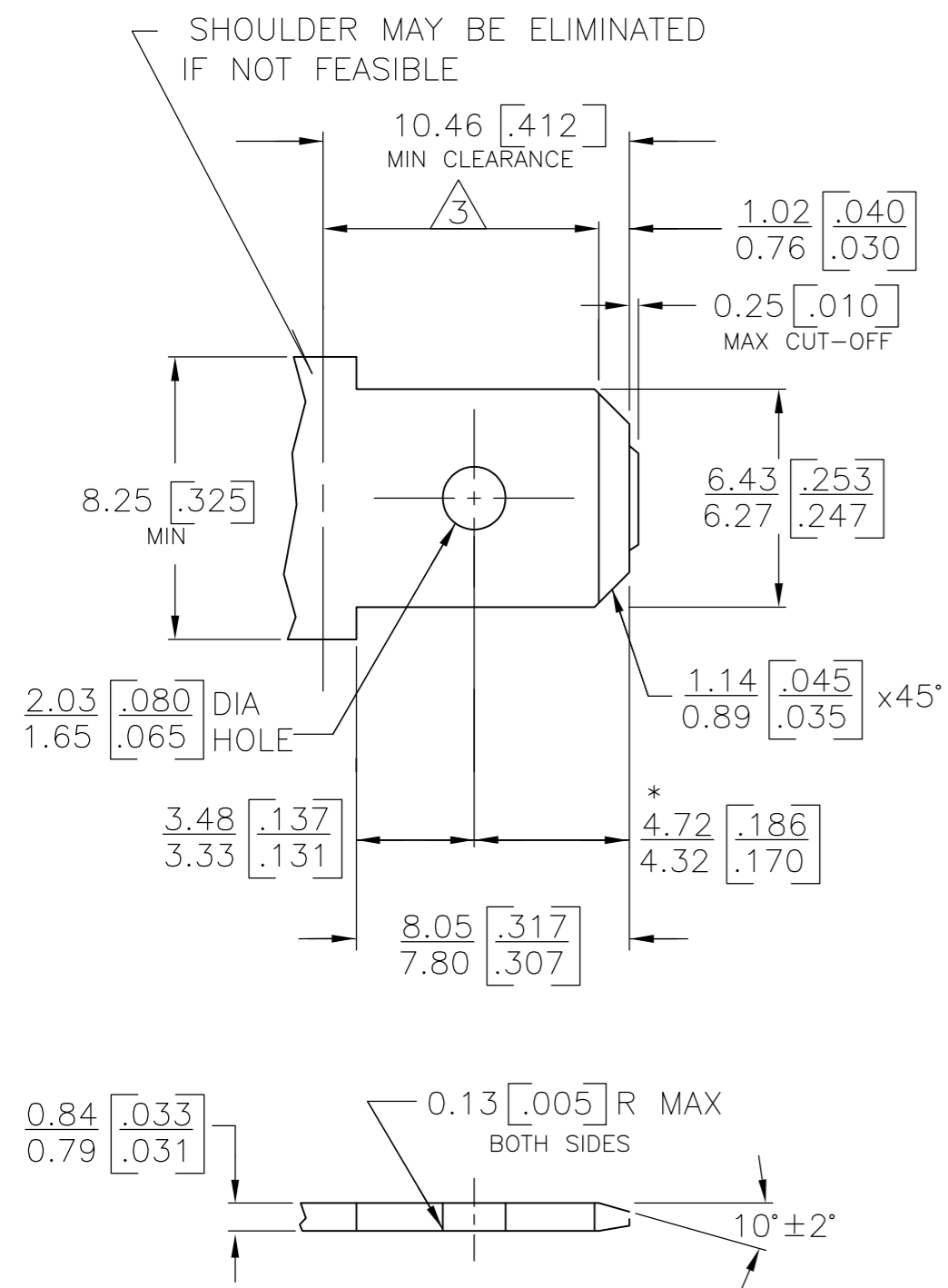
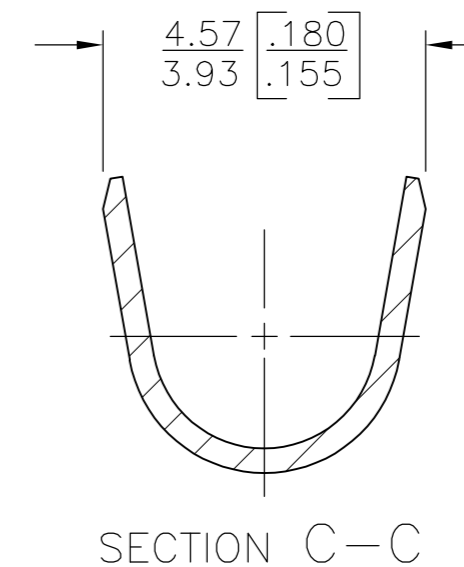
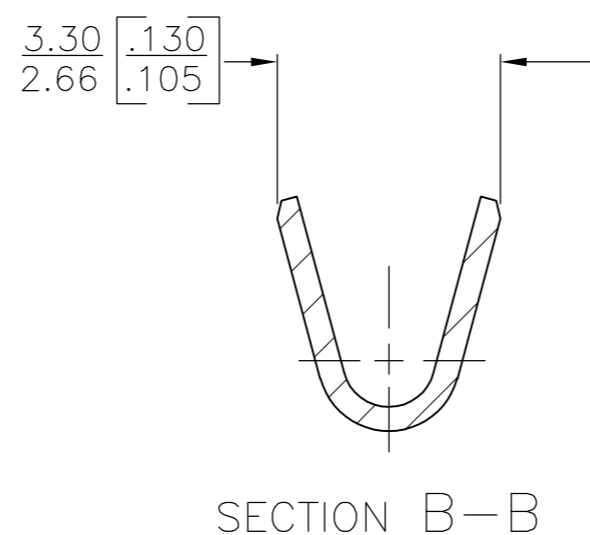
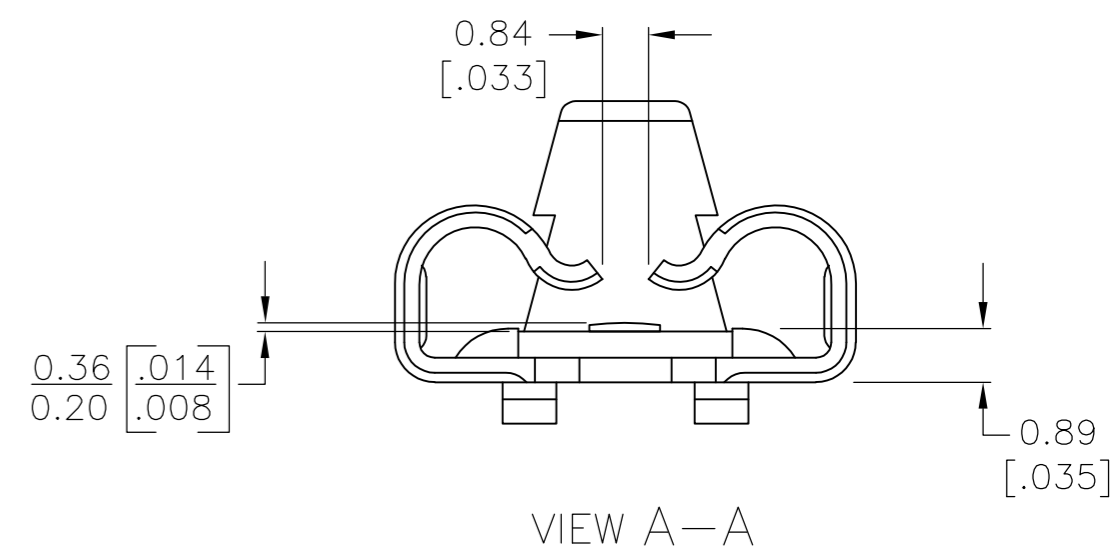


REVISIONS					
P	LTR	DESCRIPTION	DATE	DWN	APVD
A2		REVISED PER ECR-17-014411	03OCT2017	BDA	MD

SUGGESTED MATING TAB



- 1 DIMENSIONS IN BRACKETS ARE IN INCHES.
- 2 PRODUCT PROVIDED IN STRIP FORM, BREAKS MAY BE PRESENT.
- 3 THE 1.40 [.055] / 1.27 [.050] DIMENSION MUST BE MAINTAINED BY THE APPLICATOR CUT-OFF TO ENSURE THE PROPER LOCKING FUNCTION OF THE RECEPTACLE.



- 1 MATL: 1/2H BRASS OR NICKEL PL STEEL.
 - 2 NO BURRS PERMISSIBLE AT HOLE.
 - 3 MUST BE FLAT WITHIN 0.076 [.003] OVER THIS LENGTH.
 - 4 TIN PLATING IS REQUIRED ON BRASS WHEN TERMINAL TEMP. IS OVER 225°F
 - 5 HOLE MUST BE SYMMETRICAL ABOUT TAB Q WITHIN 0.076 [.003]
- * TO BE USED ONLY WHEN SHOULDER IS ELIMINATED.

UNPLATED	1.52-2.54 [.060-.100] DIA	[#22-#18] AWG	2238156-2
TIN PLATED	1.52-2.54 [.060-.100] DIA	[#22-#18] AWG	2238156-1
FINISH	INSULATION RANGE	WIRE SIZE	PART NO.

THIS DRAWING IS A CONTROLLED DOCUMENT.		DWN 07OCT2016 NAGALAKSHMI K		
DIMENSIONS: mm [INCHES]		CHK 07OCT2016 SMITH, RODNEY		
TOLERANCES UNLESS OTHERWISE SPECIFIED:		APVD 07OCT2016 SMITH, RODNEY	NAME	
0 PLC ± -		PRODUCT SPEC	RECEPTACLE, POSITIVE LOCK, .250 SERIES	
1 PLC ± -		APPLICATION SPEC	SIZE	CAGE CODE
2 PLC ± 0.25 [.010]		114-2074	A2	00779
3 PLC ± -		WEIGHT 0	DRAWING NO C=2238156	
4 PLC ± -		FINISH SEE TABLE	SCALE 5:1	SHEET 1 OF 1
4 ANGLES ± -		MATERIAL BRASS	RESTRICTED TO	
FINISH SEE TABLE		CUSTOMER DRAWING	REV A2	