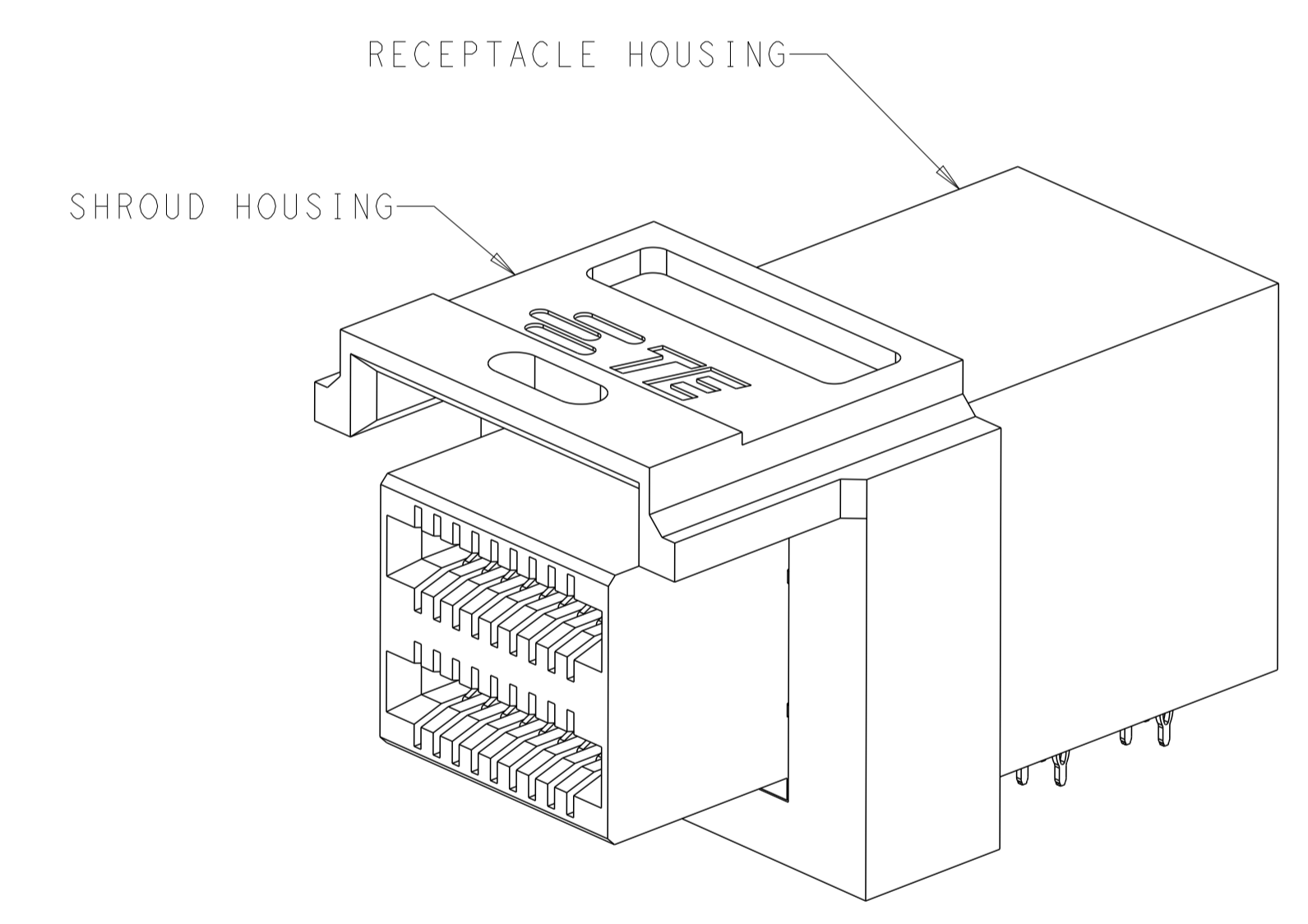
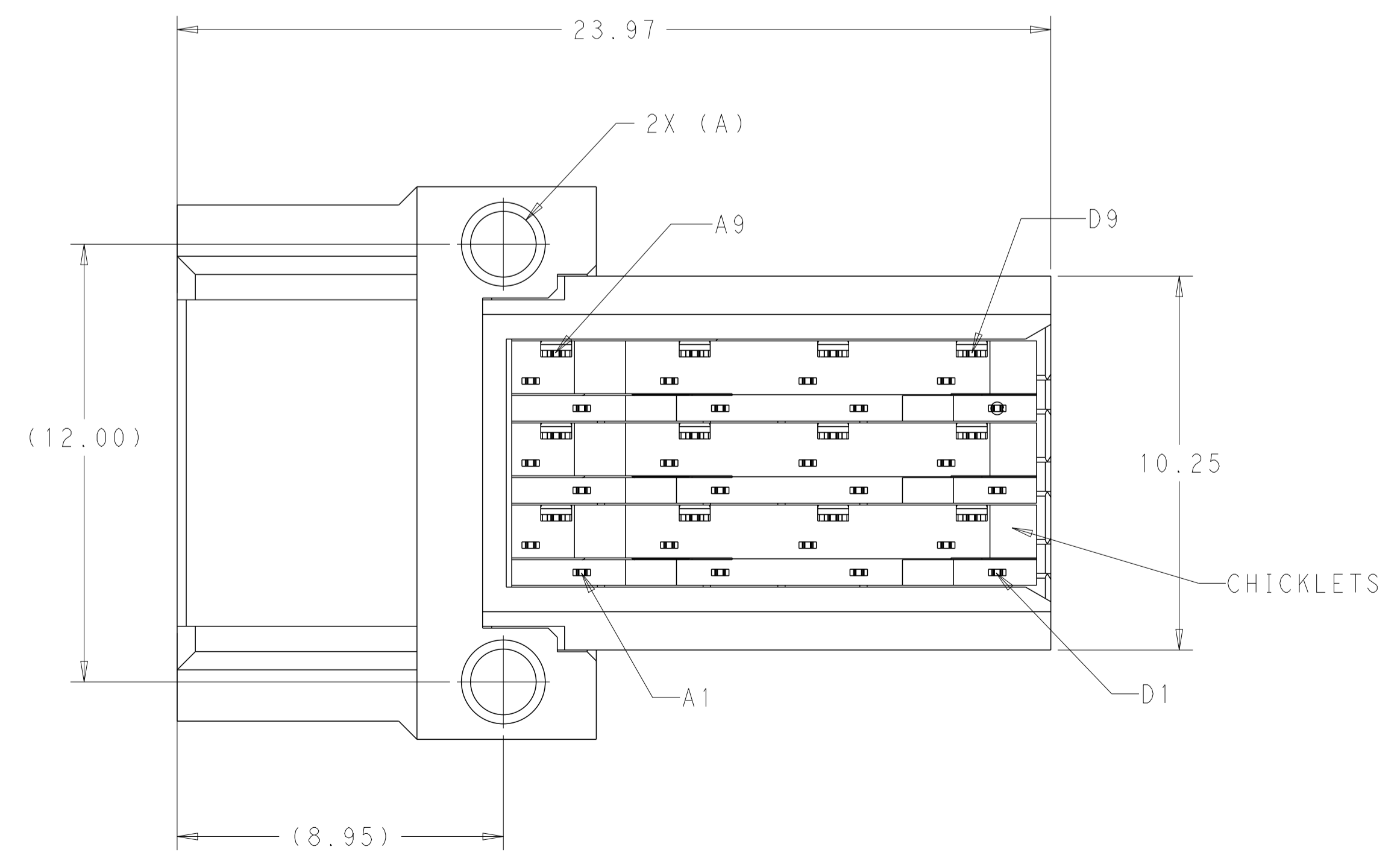
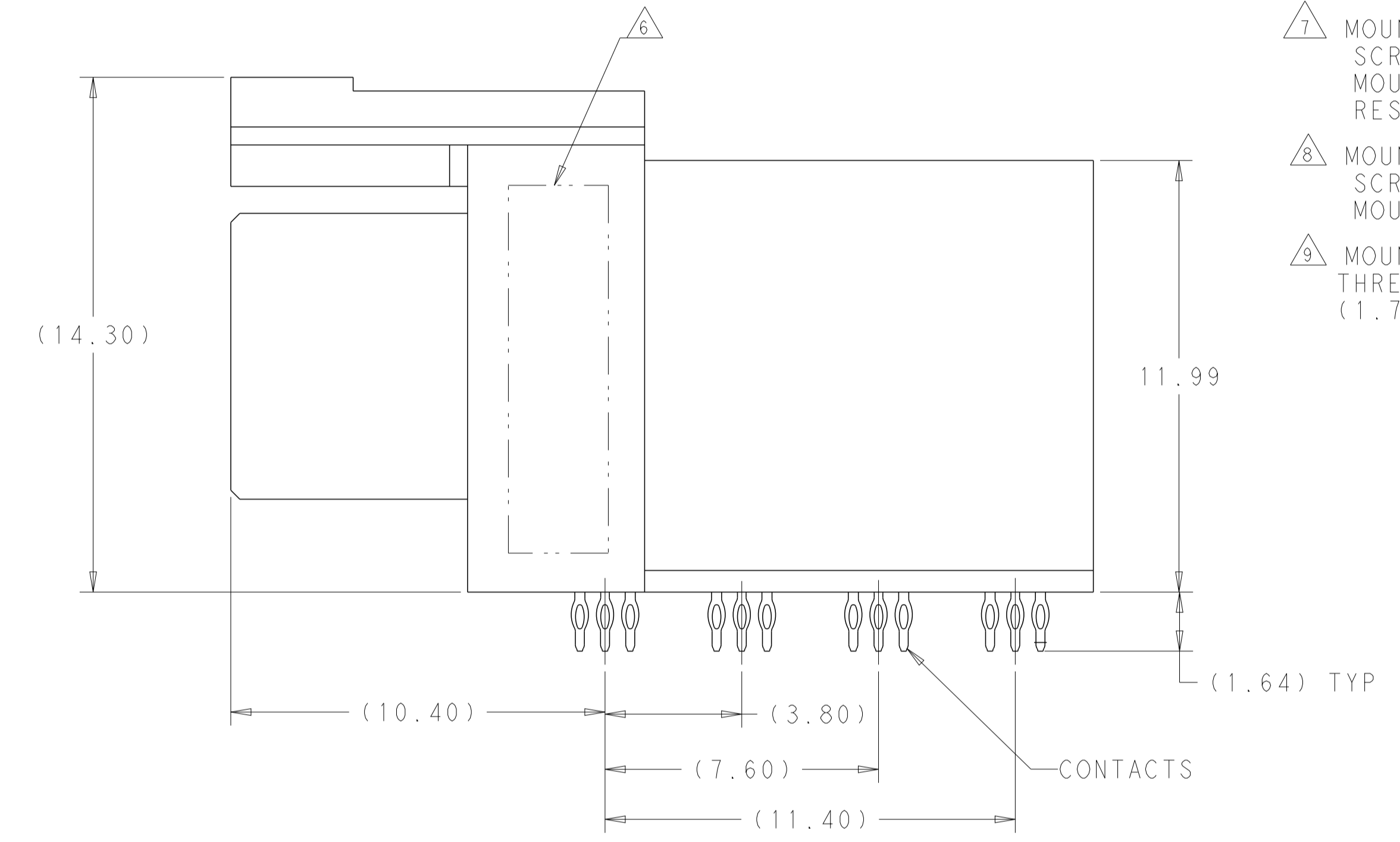
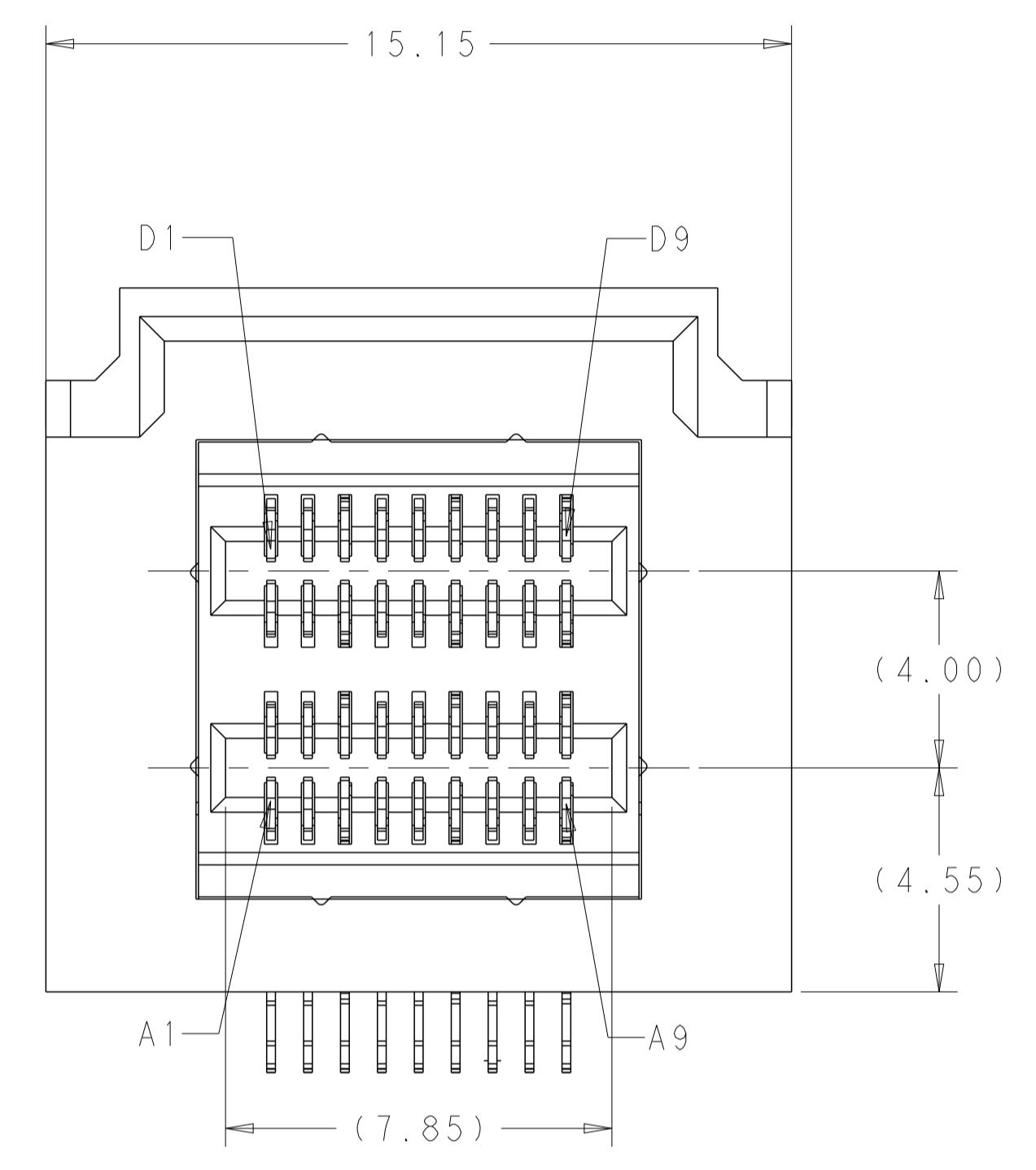


LOC	DIST	REVISIONS			
P	LTN	DESCRIPTION	DATE	DMN	APVD
D		REVISED PER ECN-23-244853	21DEC2023	AB	SZ

- △1 MATERIALS
HOUSINGS AND CHICKLETS: LCP, BLACK, UL94V-0 RATED
CONTACTS: COPPER ALLOY
- △2 CONTACT FINISH: CONFORMS TO THE REQUIREMENTS OF TE PRODUCT SPECIFICATION, 108-32038 BASED ON EIA/ECA-364-1000.01A. (CONTROLLED ENVIRONMENT APPLICATIONS) ON MATING END. TIN PLATED ON PCB TAIL
- 3. MATES WITH TE PLUG 2227603-1
- △4 MOUNTING HARDWARE M2x1.35 SELF-THREADING SCREW
SCREW LENGTH OF FASTENER = PCB THICKNESS + 3.0mm MAX (1.75mm MIN)
MOUNTING HARDWARE NOT INCLUDED
- △5 RECOMMENDED COMPONENT KEEP OUT ZONE.
- △6 PART NUMBER AND DATE CODE MARKED IN APPROXIMATE AREA SHOWN ON OPPOSITE SIDE.
- △7 MOUNTING HARDWARE M2x0.635 SELF-THREADING SCREW
SCREW LENGTH OF FASTENER = PCB THICKNESS + 3.0mm MAX (1.75mm MIN)
MOUNTING HARDWARE IS NOT SUPPLIED BY TE.
RESTRICTED TO CUSTOMER.
- △8 MOUNTING HARDWARE M2x1.35 SELF-THREADING SCREW
SCREW LENGTH OF FASTENER = PCB THICKNESS + 5.0mm MAX (1.75mm MIN)
MOUNTING HARDWARE IS NOT SUPPLIED BY TE.
- △9 MOUNTING HARDWARE M2x0.0.78 OR M1.8x0.709 SELF-THREADING SCREW (DELTA PT@ THREAD-FORMING FASTENER), SCREW LENGTH OF FASTENER = PCB THICKNESS + 5.0mm MAX (1.75mm MIN), MOUNTING HARDWARE IS NOT SUPPLIED BY TE.



SCALE 6:1

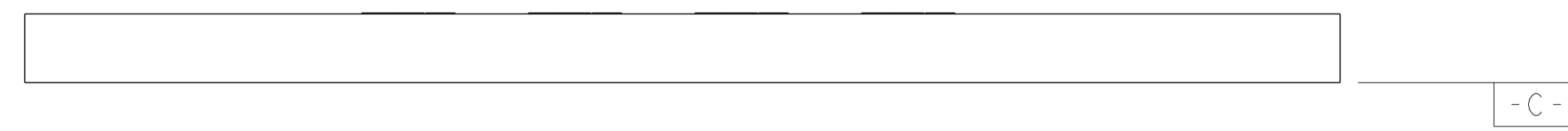
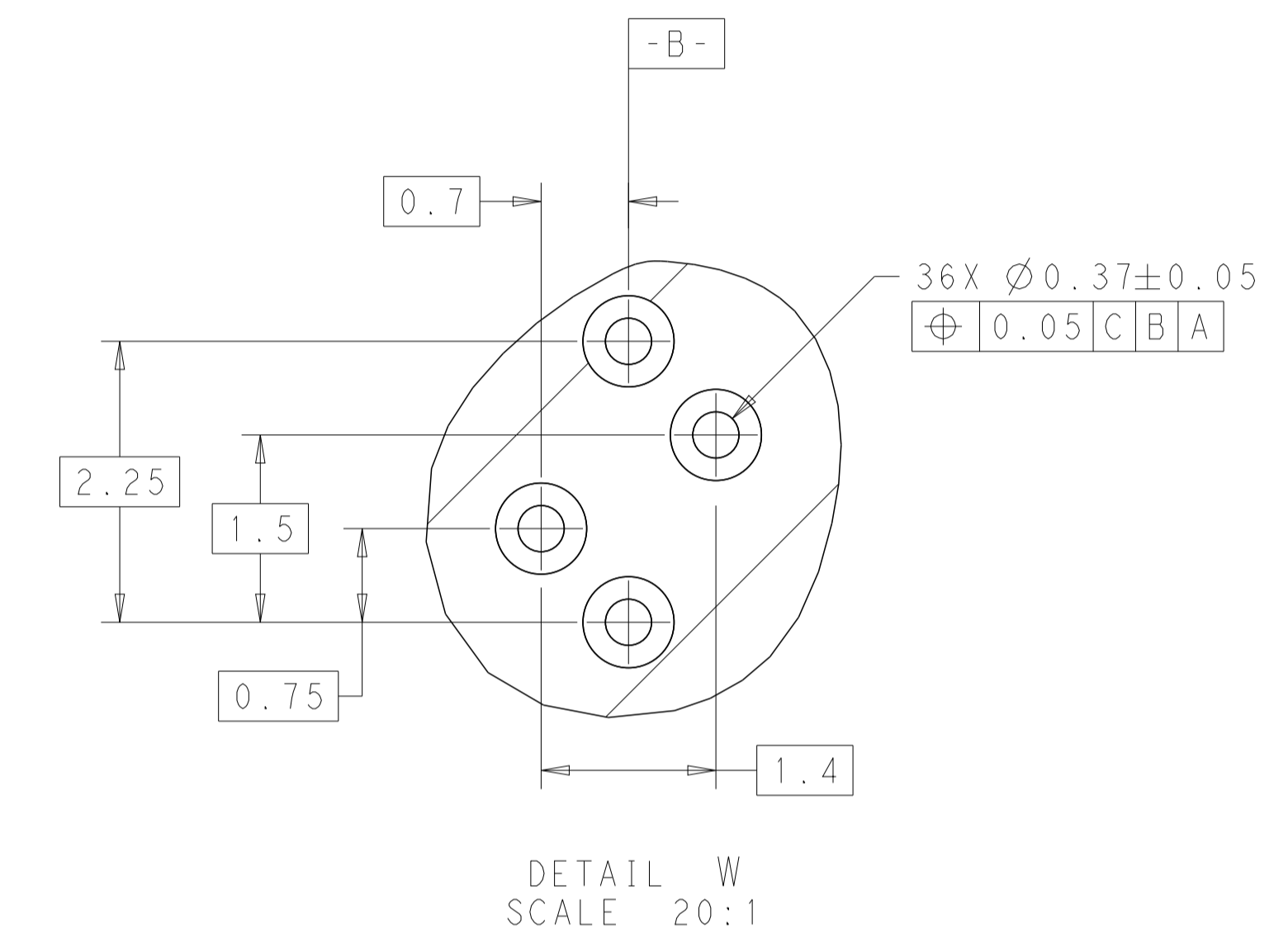
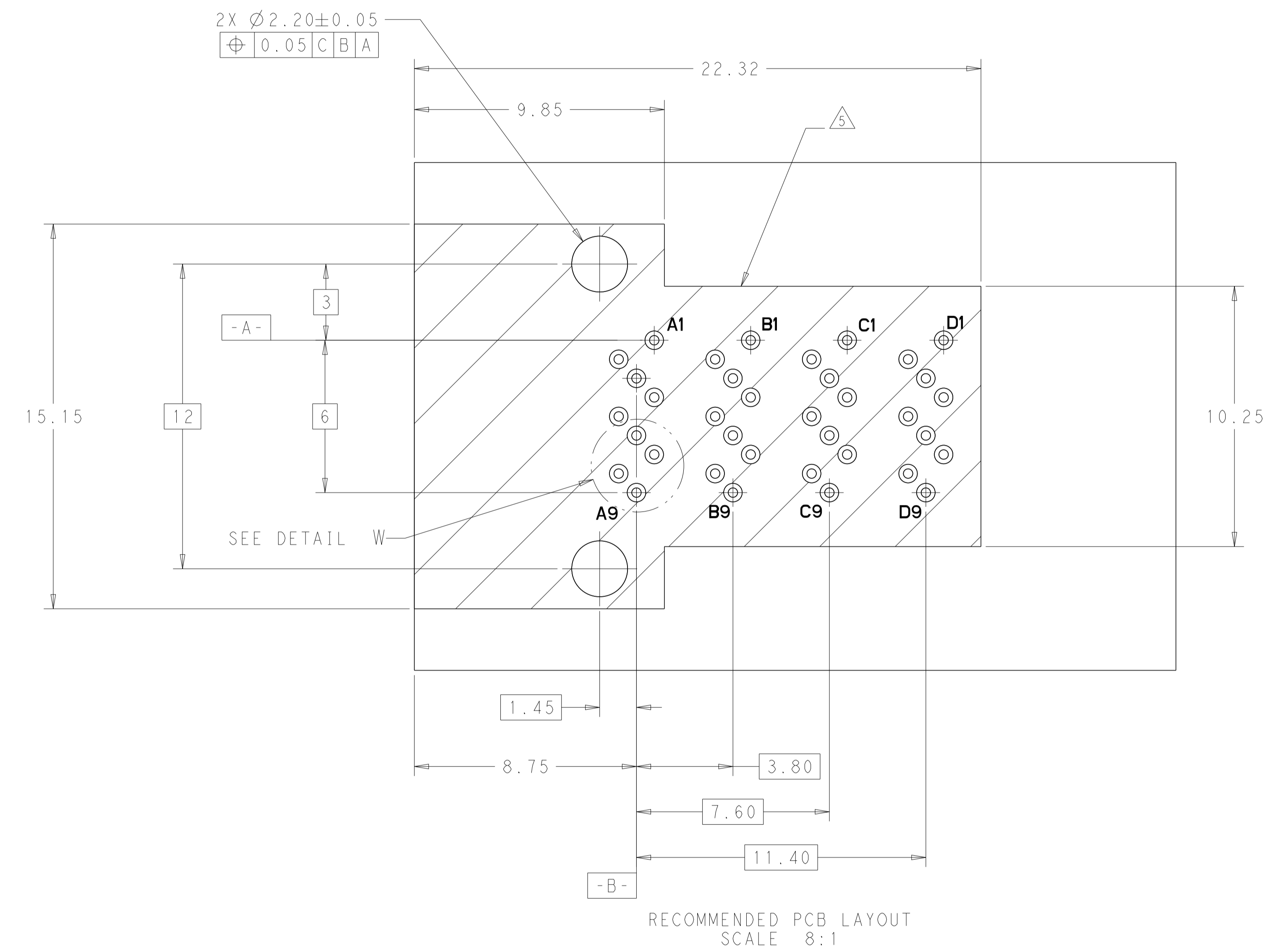
SCREW APPLICATION	DIAMETER A OF HOLE	PART NUMBER
△9	∅1.60	2227580-4
△8	∅1.80	2227580-3
△7	∅1.60	2227580-2
△4	∅1.80	2227580-1

THIS DRAWING IS A CONTROLLED DOCUMENT. DWN: R. TREA 13DEC2012
CHK: R. HENRY 13DEC2012

DIMENSIONS: mm	TOLERANCES UNLESS OTHERWISE SPECIFIED:	APVD: -	NAME: -
0 PLC ±	1 PLC ±0.13	PRODUCT SPEC: 108-32038	RECEPTACLE ASSEMBLY, 1X1, RIGHT ANGLE, INTERNAL MINI SAS HD
2 PLC ±	3 PLC ±	APPLICATION SPEC: 114-32101	SIZE: A1
4 PLC ±	ANGLES ±	WEIGHT: -	CAGE CODE: -
MATERIAL: △1	FINISH: △2	CUSTOMER DRAWING	SCALE: 8:1 SHEET 1 OF 2 REV D

TE Connectivity

LOC		DIST		REVISIONS			
P	LTN	DESCRIPTION	DATE	DMN	APVD		
-	-	SEE SHEET 1	-	-	-		



THIS DRAWING IS A CONTROLLED DOCUMENT.		DMN R. TREA 13DEC2012	TE Connectivity	
DIMENSIONS: mm		CHK R. HENRY 13DEC2012	NAME RECEPTACLE ASSEMBLY, 1X1, RIGHT ANGLE, INTERNAL MINI SAS HD	
TOLERANCES UNLESS OTHERWISE SPECIFIED: 0 PLC ± 1 PLC ± 2 PLC ±0.13 3 PLC ± 4 PLC ± ANGLES ± FINISH ±		APVD -	PRODUCT SPEC 108-32038	RESTRICTED TO
MATERIAL -		APPLICATION SPEC 114-32101	SIZE A1	CAGE CODE C=2227580
		WEIGHT -	SCALE 8:1 SHEET 2 OF 2 REV D	
		CUSTOMER DRAWING		