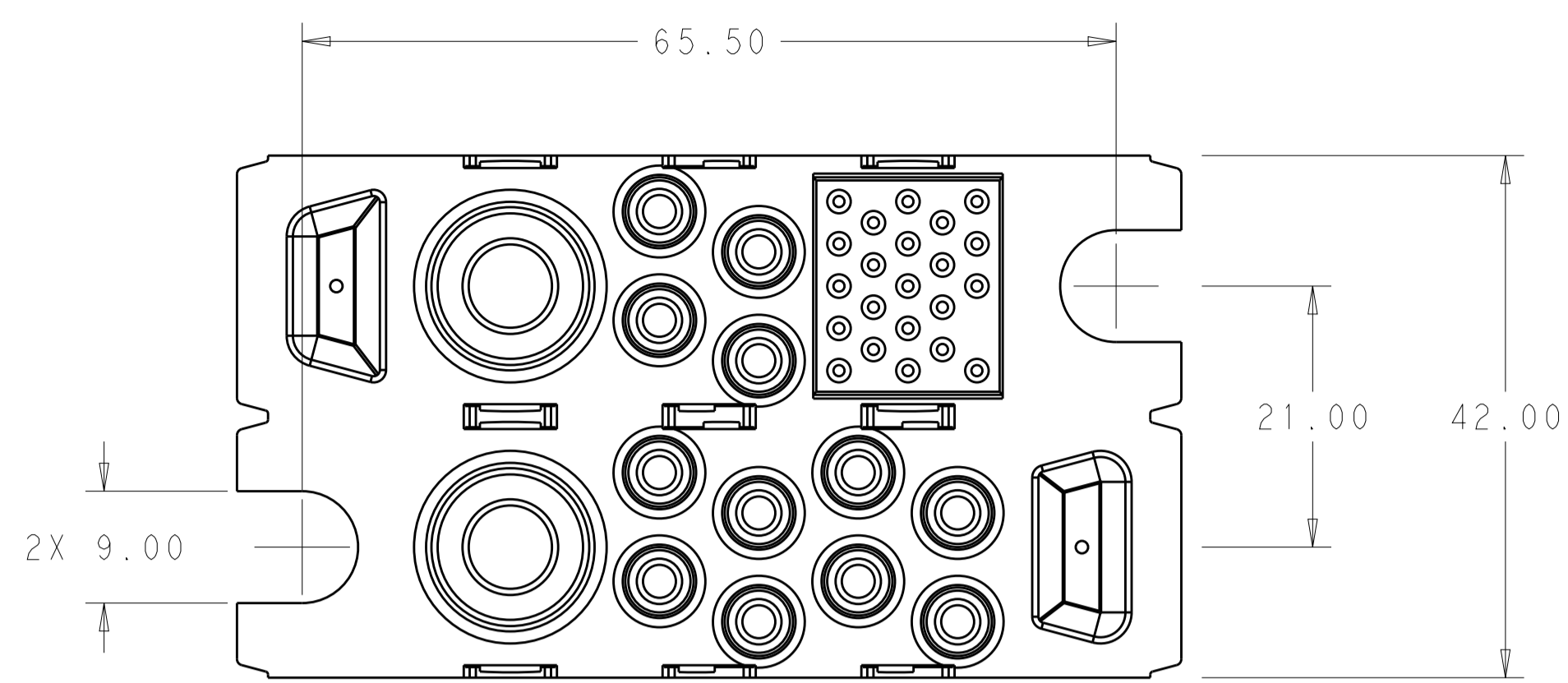
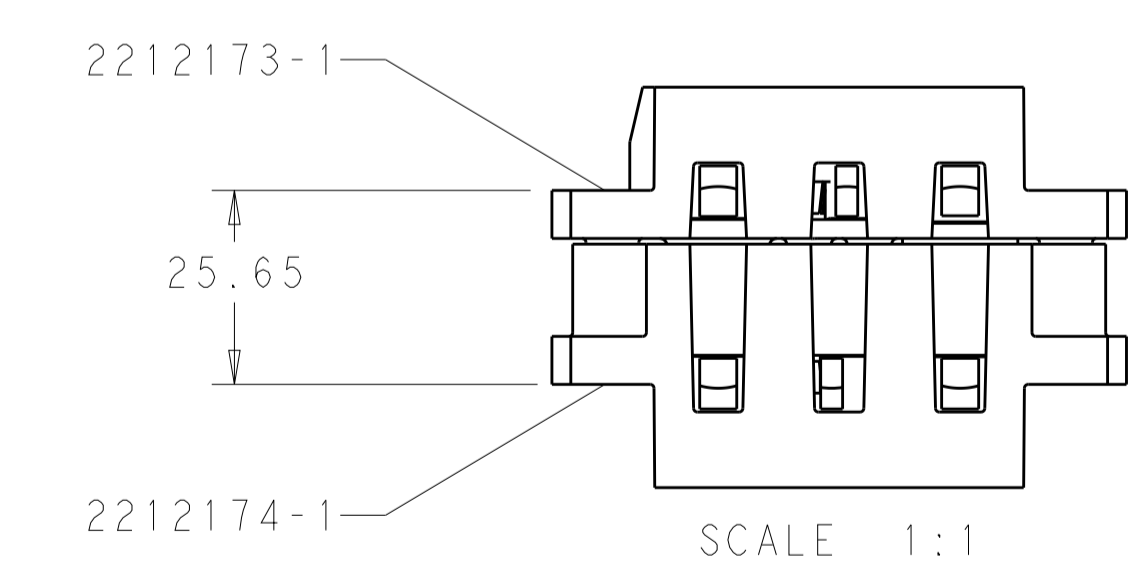
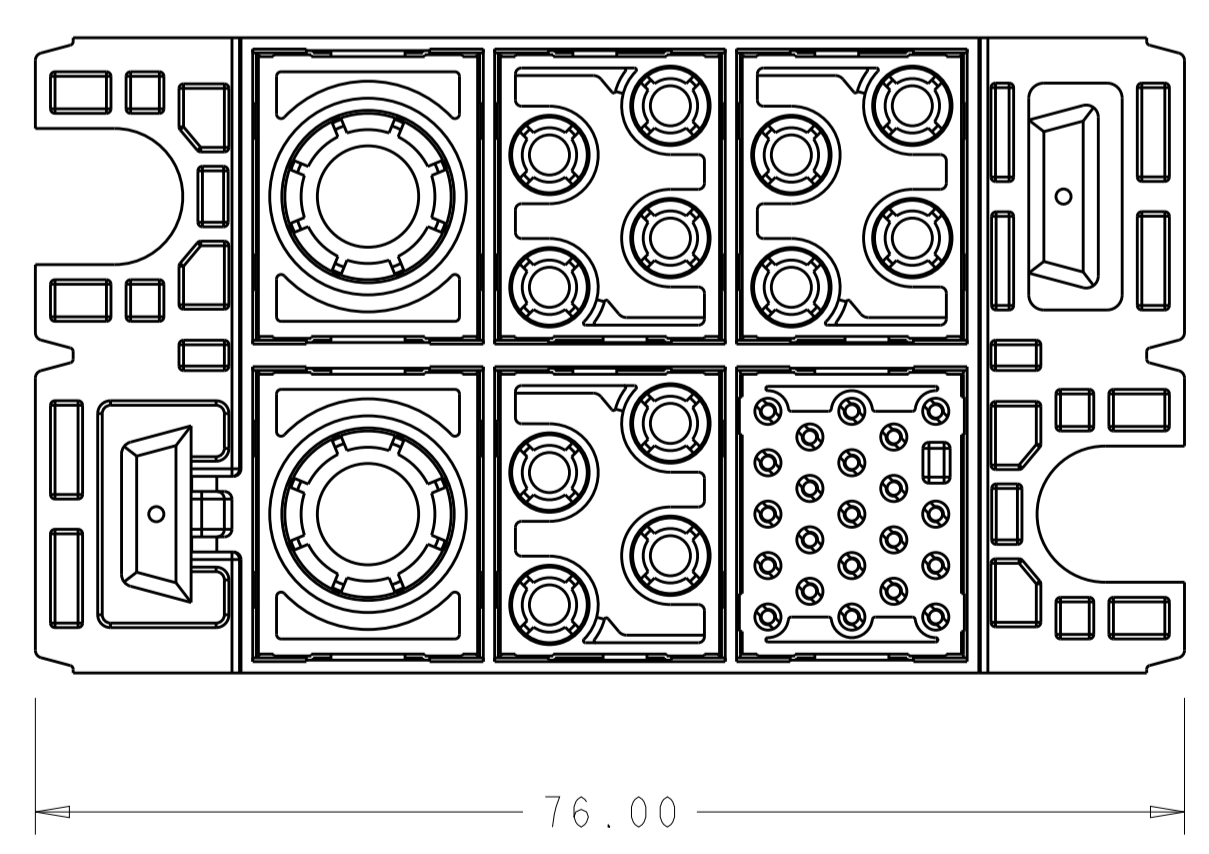
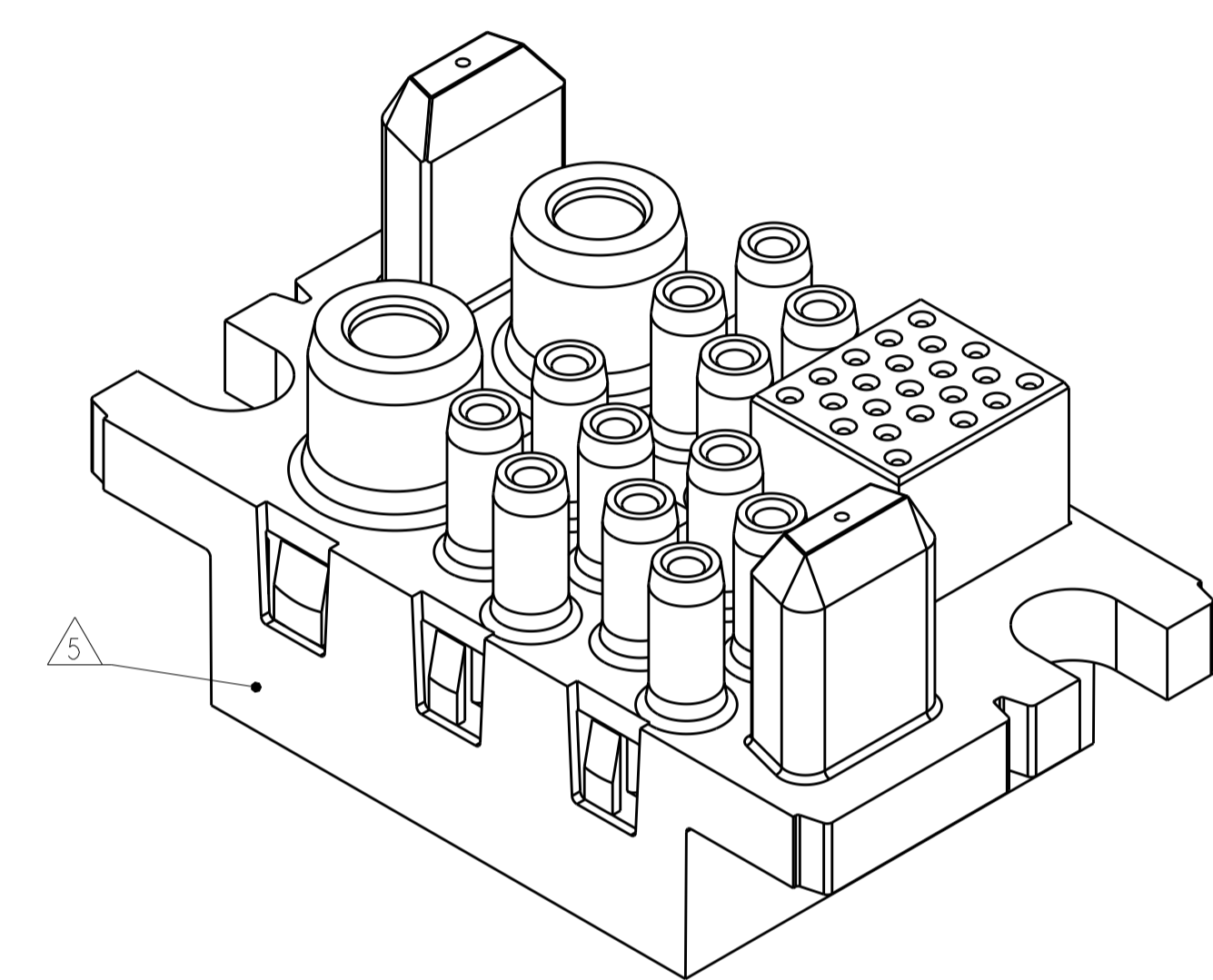
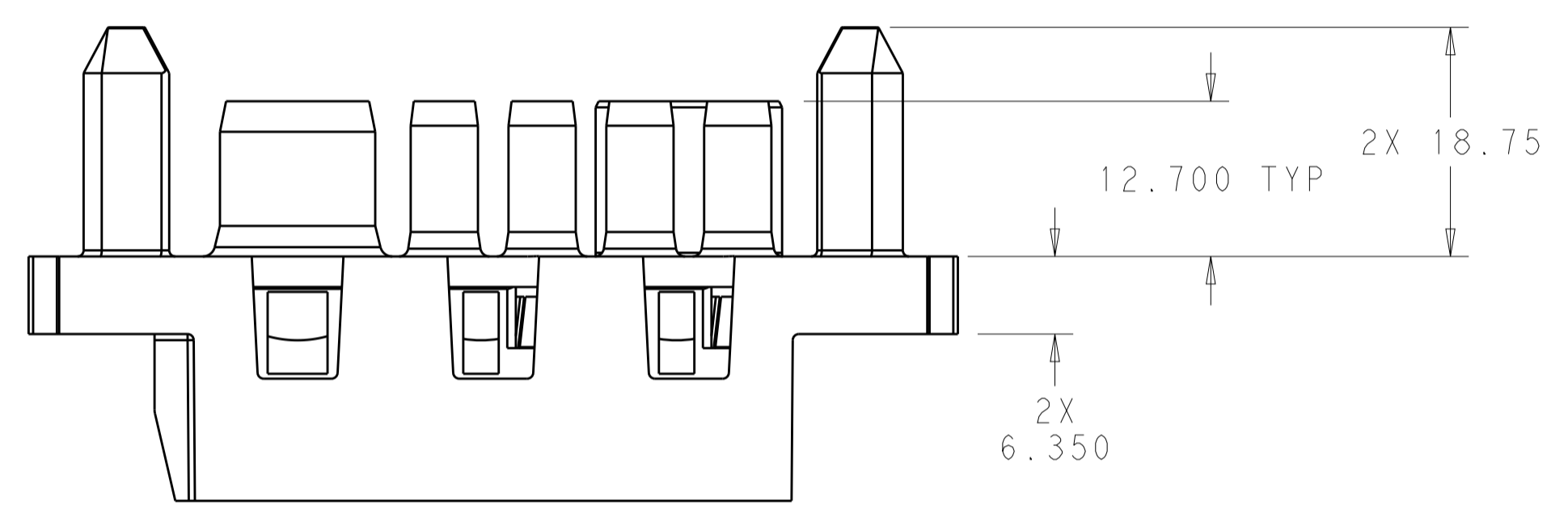
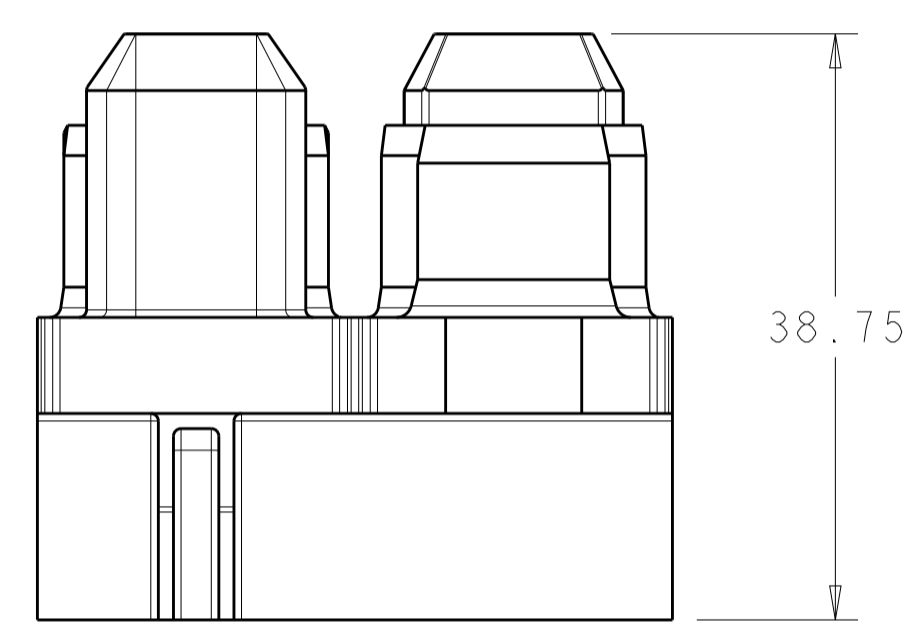


LOC		DIST		REVISIONS			
				REV	DATE	BY	APPD
-	-	-	-	-	-	-	-



- △ HOUSING: THERMOPLASTIC, COLOR BLACK, FLAMMABILITY RATING UL 94 V-0.
- △ THIS ASSEMBLY TO MATE WITH TEC PART NUMBER 2212174-1.
- 3. RECOMMENDED SHOULDER SCREW:
 2212056, FLOAT MOUNT
 2212055, FIXED MOUNT
- △ RECOMMENDED PANEL CUTOUT FOR FRONT PANEL MOUNT APPLICATION.
 RECOMMENDED PANEL THICKNESS 1.5 TO 1.78.
- △ DATE CODE AND PART NUMBER IN APPROXIMATE AREA SHOWN.



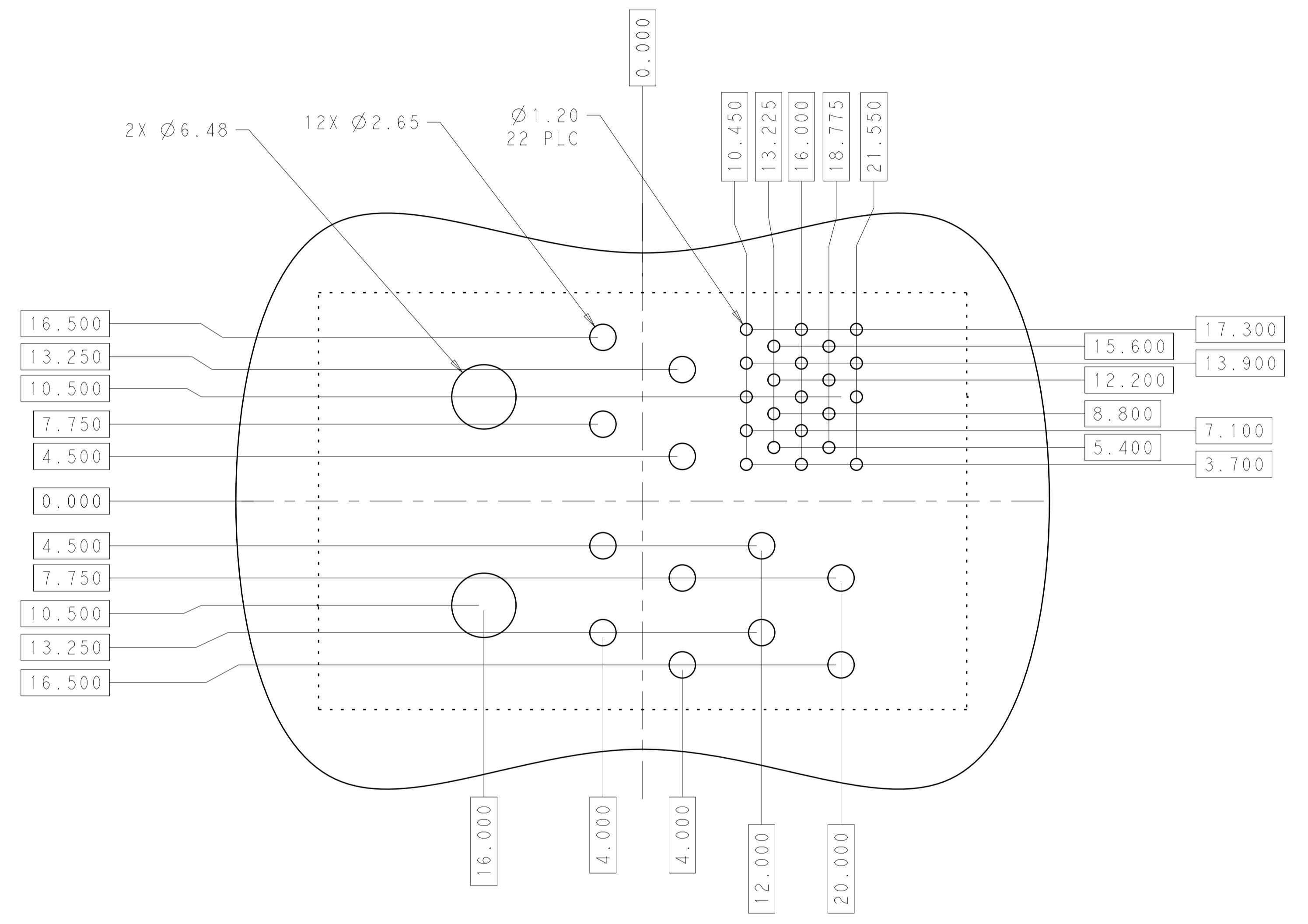
SCALE 1:1
 FULLY MATED ASSEMBLIES △

CONNECTOR, SOCKET, FORGE 0x#0,2x#4,0x#8,3x#12,1x#22,	2212173-1
DESCRIPTION	PART NO.

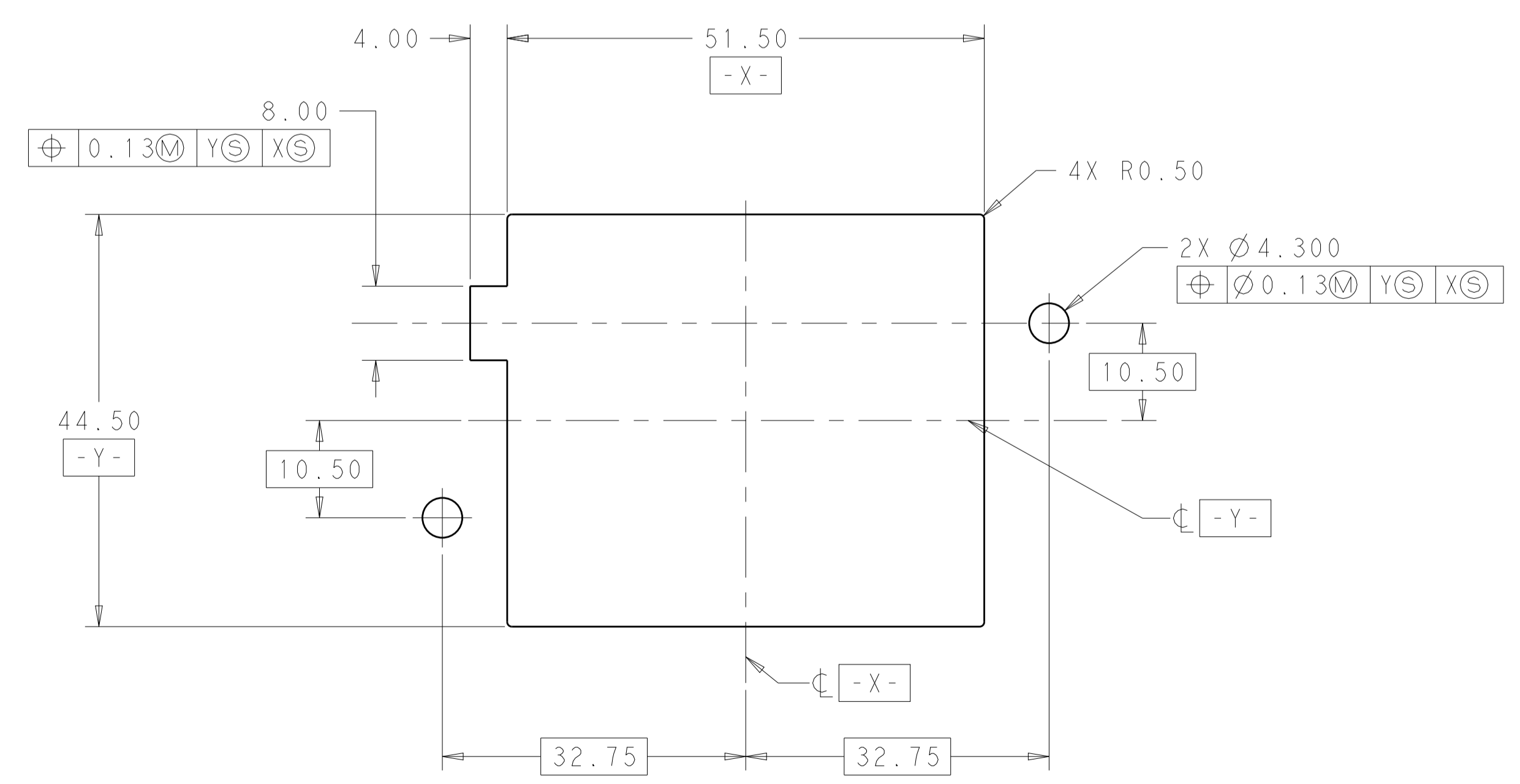
THIS PRINT IS
PRELIMINARY
 UNQUALIFIED PRODUCT
 CONTACT PRODUCT ENGINEERING
 BEFORE USING THIS PRINT

THIS DRAWING IS A CONTROLLED DOCUMENT.		OWN: R. IRENA 28JAN2015	
DIMENSIONS: mm		CHK: E. WICKES 28JAN2015	
TOLERANCES UNLESS OTHERWISE SPECIFIED:		APPD: S. ORRIS 28JAN2015	
0 PLC ±N/A 1 PLC ±N/A 2 PLC ±0.25 3 PLC ±0.13 4 PLC ±N/A ANGLES ±N/A°		NAME: S. ORRIS	
MATERIAL: △		PRODUCT SPEC: 108-2323	SIZE: A1
		APPLICATION SPEC: 114-13299	CAGE CODE: 00779
		FINISH: △	DRAWING NO: 2212173
		WEIGHT: -	RESTRICTED TO: -
		Customer Drawing	SCALE: 2:1 SHEET 1 OF 2 REV 1

LOC		DIST		REVISIONS			
P	LTN	DESCRIPTION	DATE	DMN	APVD		
-	-	SEE SHEET 1	-	-	-		



PCB LAYOUT
SCALE 3:1



RECOMMENDED PANEL CUTOUT
SCALE 2:1

THIS DRAWING IS A CONTROLLED DOCUMENT.		DMN R. IREDA 28JAN2015	TE Connectivity
DIMENSIONS: mm		CHK E. WICKES 28JAN2015	
TOLERANCES UNLESS OTHERWISE SPECIFIED:		APVD S. ORRIS 28JAN2015	NAME CONNECTOR, SOCKET, FORGE 0x#0, 2x#4, 0x#8, 3x#12, 1x#22 CONFIGURATION
		PRODUCT SPEC 108-2323	SIZE A100779
MATERIAL		APPLICATION SPEC 114-13299	CAGE CODE C=2212173
FINISH		WEIGHT	RESTRICTED TO
		Customer Drawing	SCALE 2:1 SHEET 2 OF 2 REV 1