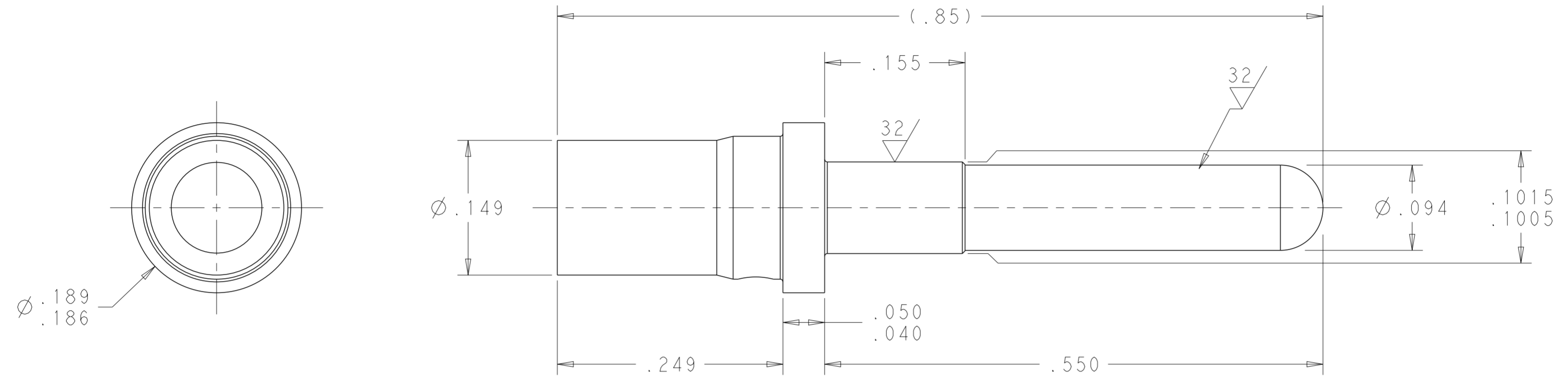


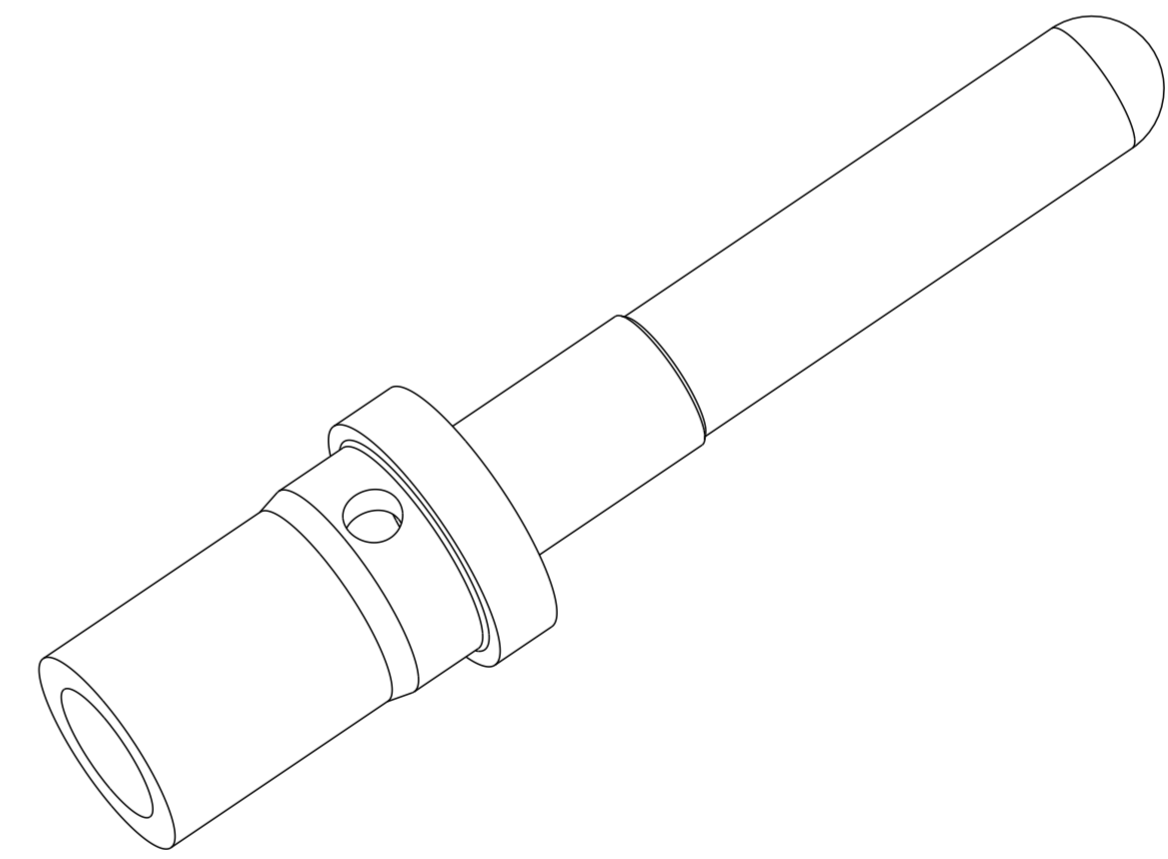
THIS DRAWING IS UNPUBLISHED. RELEASED FOR PUBLICATION 20  
 © COPYRIGHT 20 BY - ALL RIGHTS RESERVED.

LOC		DIST		REVISIONS			
P	LTR	DESCRIPTION	DATE	DWN	APVD		
	B	REVISED PER ECO-13-005777	04APR2013	KH	DO		

DIMENSIONING AND TOLERANCING PER ASME Y14.5M-2009



- PART NUMBER CHANGES AND OR DESIGN CHANGES AFFECTING THE INTERCHANGEABILITY REQUIRE PRIOR TE APPROVAL AND AUTHORIZATION BY REVISION TO THIS DRAWING.
- MATERIAL: COPPER ALLOY
- FINISH: SILVER PLATE .000200 MIN THK. OVER NICKEL .000050 MIN. THK.
- ITEMS PROVIDED TO THIS SPECIFICATION TO BE PERMANENTLY IDENTIFIED ON THE CONTAINER WITH THE FOLLOWING IDENTIFIER:



SCALE 8:1

TE PART NO. \_\_\_\_\_ DATE CODE (e.g. 0216) \_\_\_\_\_  
 XXXXXXXX-X XXXX YEAR WEEK

2212100-1  
 PART NUMBER

THIS DRAWING IS A CONTROLLED DOCUMENT.		DWN S. WELDON 03JAN2013	<b>STE</b> TE Connectivity	
DIMENSIONS: INCHES		CHK D. ORRIS 03JAN2013		
TOLERANCES UNLESS OTHERWISE SPECIFIED:		APVD D. ORRIS 03JAN2013	NAME PIN CONTACT, SIZE 12, CRIMP, REMOVABLE, .430 FRONT EXT, SPECIAL	
0 PLC ±-		PRODUCT SPEC -	SIZE CAGE CODE DRAWING NO RESTRICTED TO	
1 PLC ±-.02		APPLICATION SPEC -	A200779 C-2212100 -	
2 PLC ±.010		WEIGHT -	SCALE 10:1 SHEET 1 OF 1 REV B	
3 PLC ±-		Customer Drawing		
4 PLC ±.3°				
ANGLES FINISH				