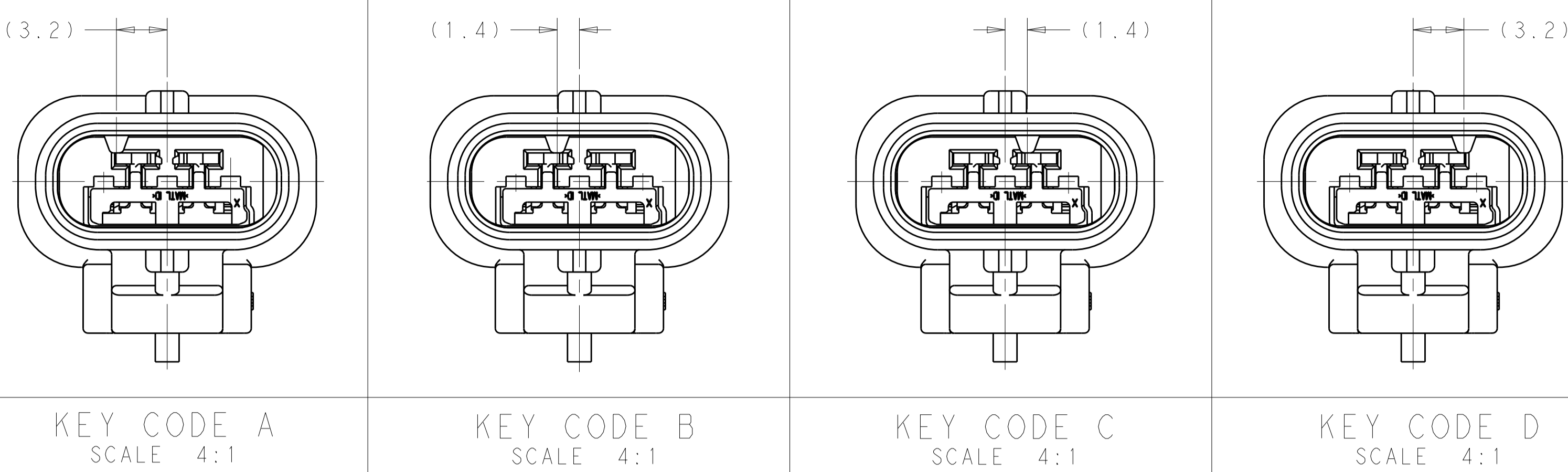
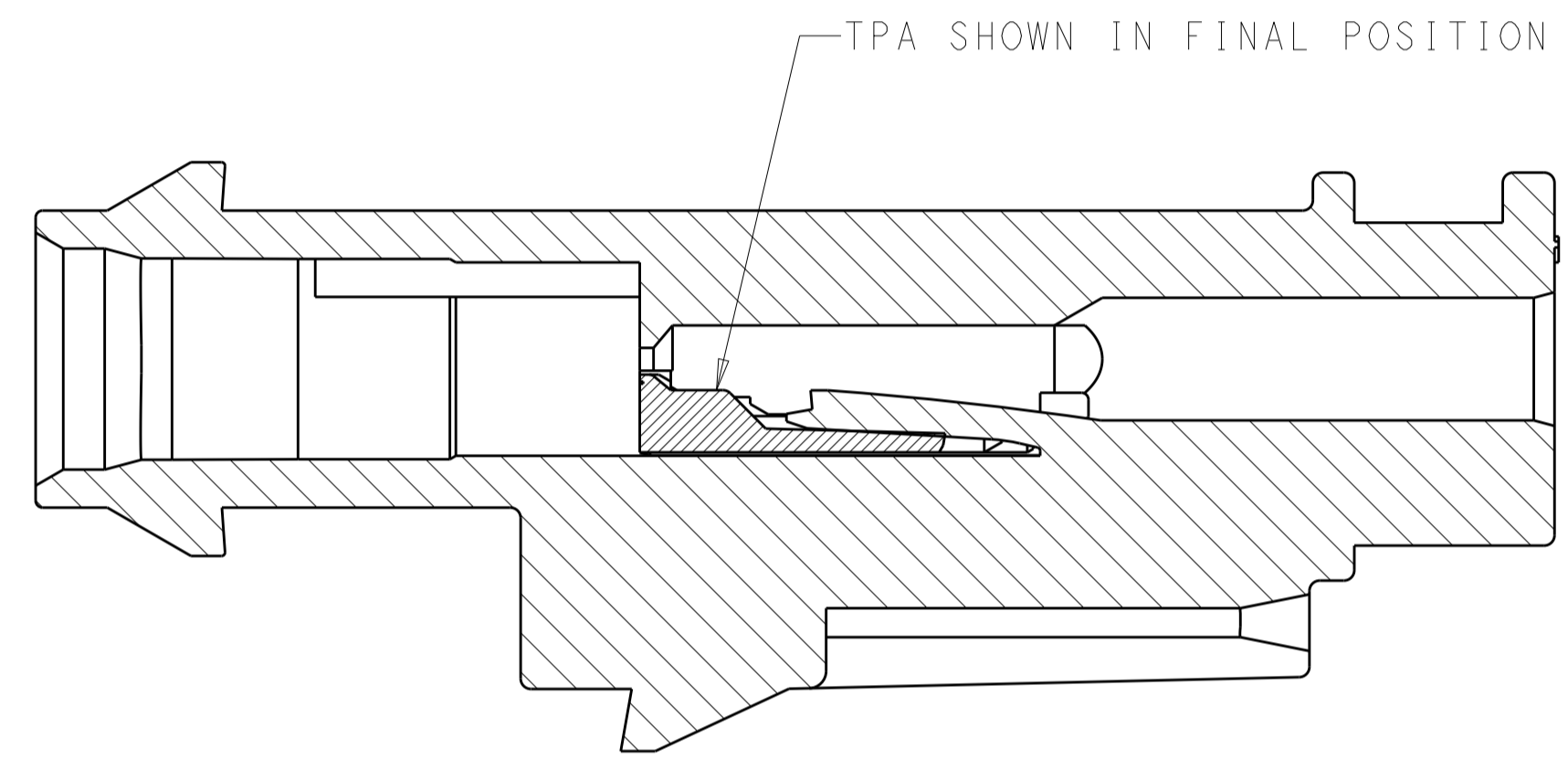


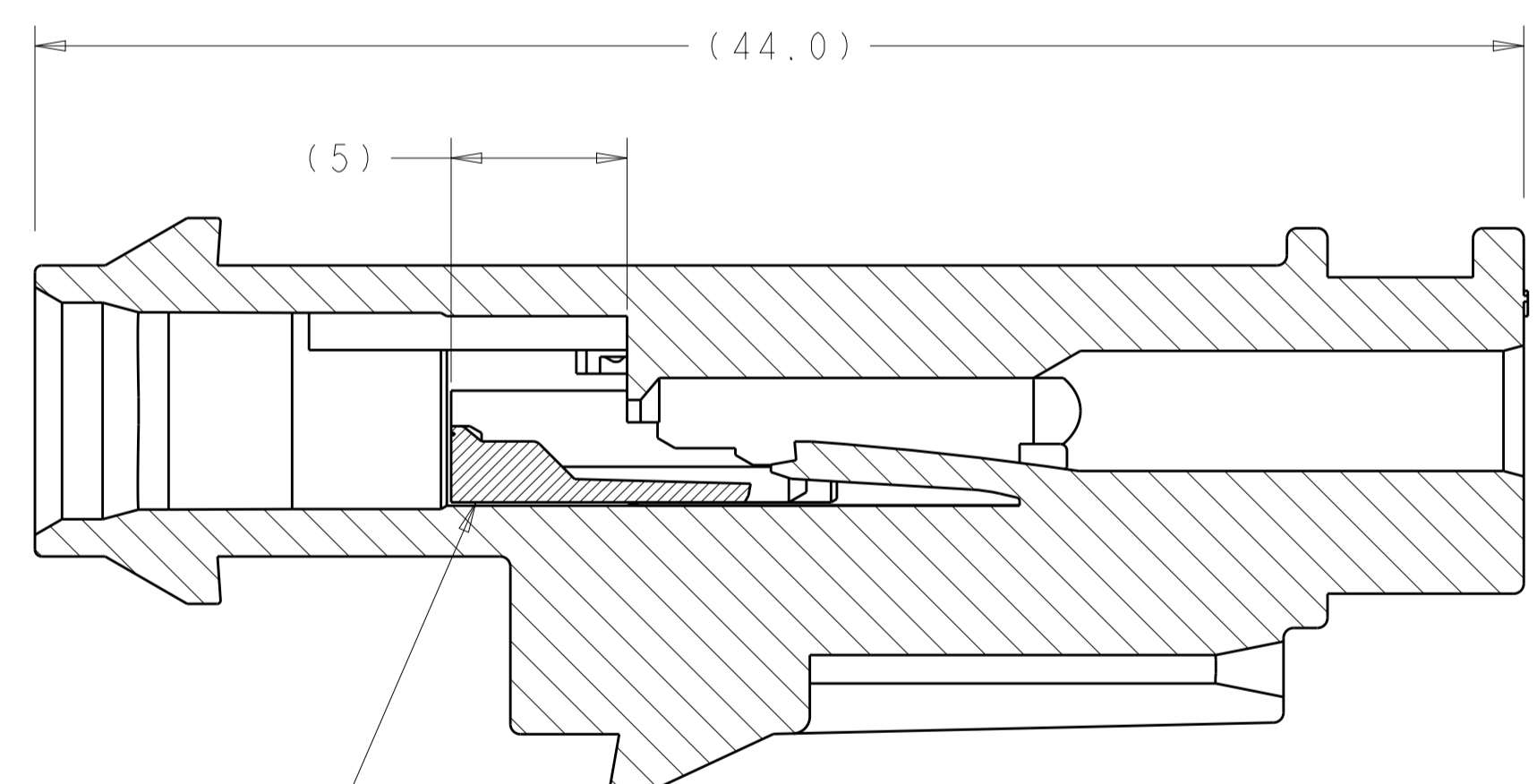
| REVISIONS | | | | |
|-----------|-----|----------------------------|-----------|---------|
| P. | LTN | DESCRIPTION | DATE | APVD |
| A | | RELEASED PER ECO-15-012149 | 21AUG2015 | DLD MDB |
| B | | REVISED PER ECO-17-003503 | 14MAR2017 | DLD JLT |



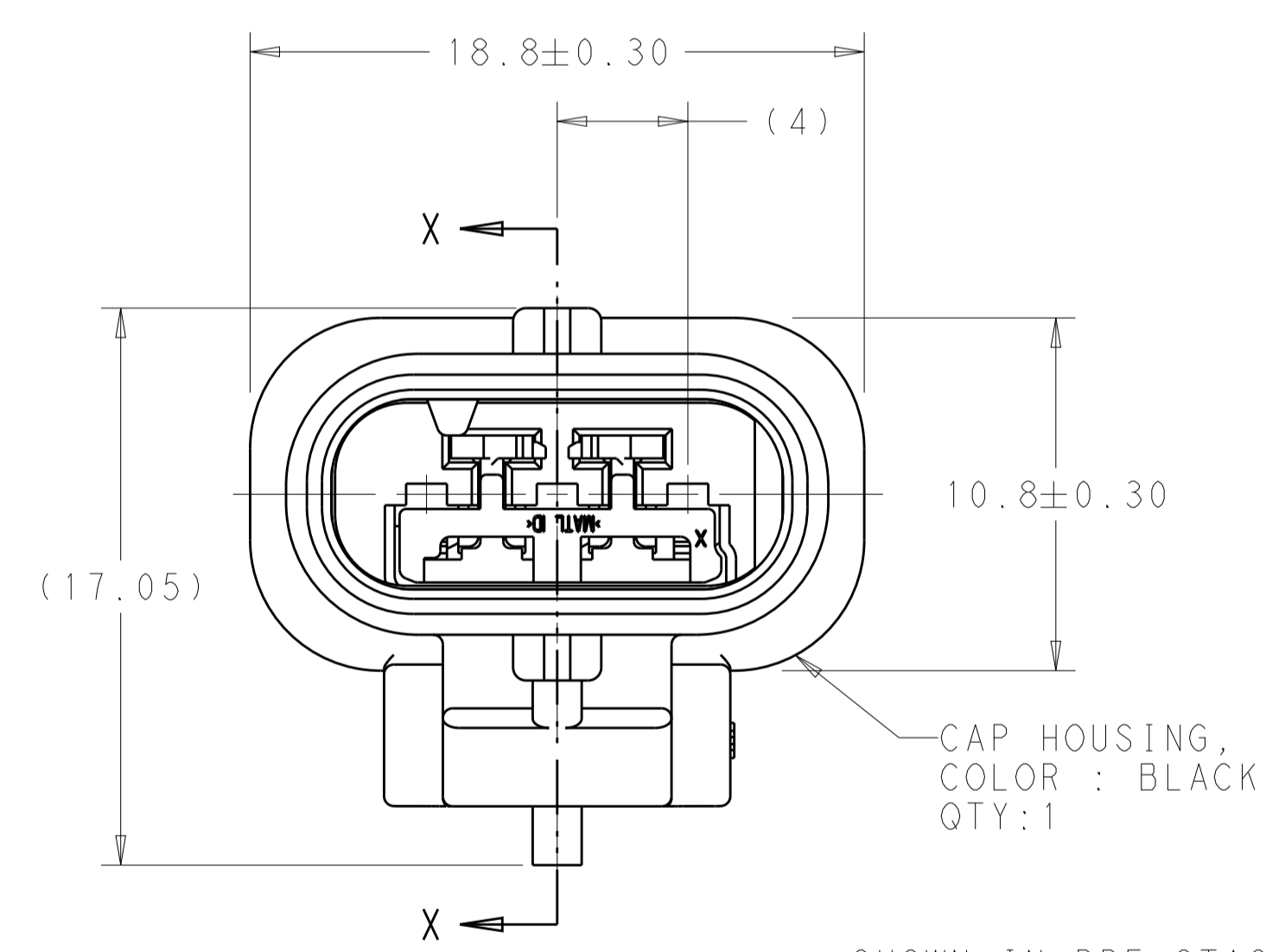
- △ CAP ASSEMBLY IS SHIPPED WITH TPA IN PRE-STAGED POSITION. SEE INSTRUCTION SHEET 408-32094 FOR CONNECTOR SERVICE AND TPA OPERATION.
- 2. TERMINALS SOLD SEPARATELY. FOR USE WITH TE MCON 1.2mm CLEAN BODY TAB CONTACT WITH WIRE SEAL. SEE TABLE.
- 3. FOR OPTIONAL TERMINAL CAVITY BLOCKING, CONTACT TE SALES REPRESENTATIVE OR CUSTOMER SERVICE.
- △ CONTACT PLATING AND APPLICABLE INDIVIDUAL WIRE SEAL ARE APPLICATION DEPENDENT. CONTACT TE SALES REPRESENTATIVE OR CUSTOMER SERVICE FOR DETAILS.
- △ FOR WIRE CRIMP DETAILS, SEE TE APPLICATION SPECIFICATION 114-18464.
- △ DOCUMENTED I.C.D. IS SPECIFIED TO MEET MOST WIRE SEAL APPLICATIONS. HOWEVER, I.C.D. IS HIGHLY DEPENDENT ON INSULATION TYPE AND OD. SUFFICIENT GRIP OF THE WIRE SEAL MUST BE OBTAINED SUCH THAT WIRE SEAL DOES NOT DISPLACE FROM INSULATION GRIP DURING CONTACT INSERTION INTO CONNECTOR HOUSING. THE WIRE SEAL SHALL NOT BE CRIMPED TOO TIGHTLY THAT THE WIRE SEAL TEARS DURING THE CRIMPING OPERATION.
- 7. CAP ASSEMBLY ACCEPTS ACCESSORY CLIPS DESIGNED TO FUNCTION IN CLIP SLOT DEFINED BY EWCAP-005-7, REVISION A.
- 8. CONNECTOR VALIDATION PER USCAR-2 (REV 6) T4,V2,S3.
- 9. TRACEABILITY CODE (YY = TWO DIGIT YEAR, JJJ = 3 DIGIT JULIAN DAY, S = 1 DIGIT SHIFT).
- △ NOTE REMOVED



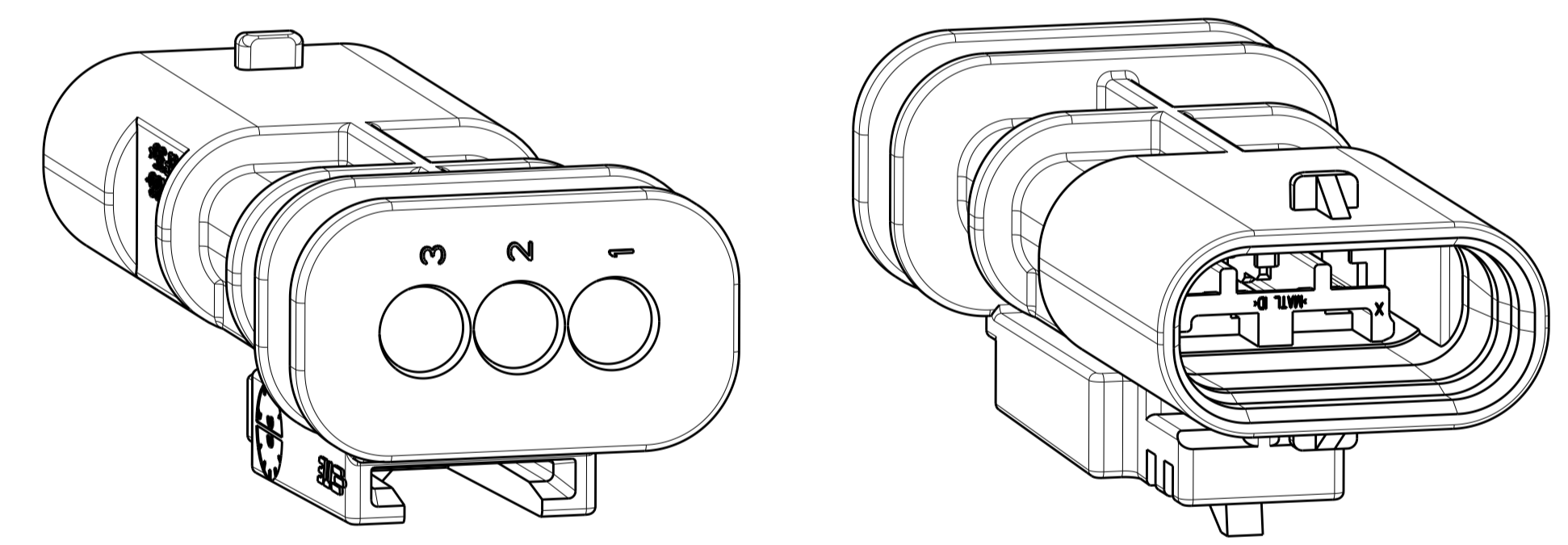
SECTION X-X



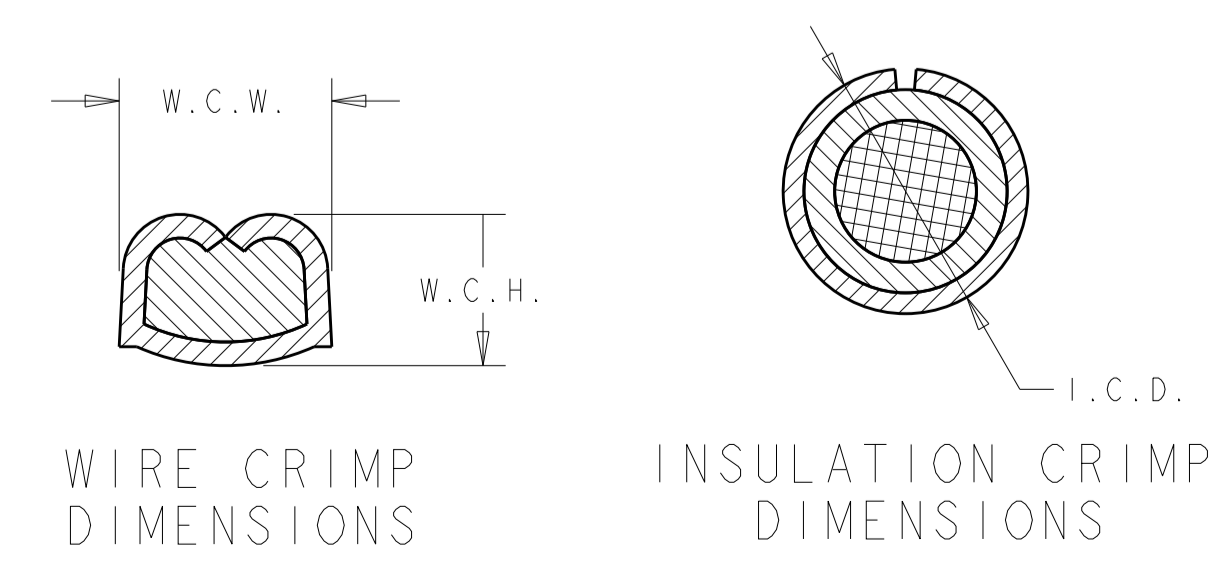
SECTION X-X



SHOWN IN PRE-STAGED (AS SHIPPED) POSITION
 COLOR : GRAY
 QTY: 1



ISOMETRIC VIEWS
 SCALE 4:1



| | | | | | |
|----------|-------------------|-------|-------|-------|-----------------------|
| 150°C | 2141114 | △ | △ | △ | △ |
| △ | 2141116 | | | | |
| | 2177610 | | | | |
| MAX TEMP | MALE TERMINAL P/N | W.C.H | W.C.W | I.C.D | WIRE SEAL PART NUMBER |

| | | | | |
|--|--|--|----------|-----------|
| THIS DRAWING IS A CONTROLLED DOCUMENT. | | DWN | VISHNU.P | 13MAY2013 |
| DIMENSIONS: | | CHK | MD BROWN | 13MAY2013 |
| mm | | APVD | MD BROWN | 13MAY2013 |
| TOLERANCES UNLESS OTHERWISE SPECIFIED: | | NAME | | |
| 0 PLC ± | | CAP ASSEMBLY, SEALED, 3 POSITION, MCON | | |
| 1 PLC ±0.3 | | SIZE | | |
| 2 PLC ±0.15 | | CAGE CODE | | |
| 3 PLC ± | | DRAWING NO | | |
| 4 PLC ± | | A100779 | | |
| ANGLES ± | | RESTRICTED TO | | |
| FINISH | | CUSTOMER DRAWING | | |
| MATERIAL | | SCALE 5:1 | | |
| | | SHEET 1 OF 1 | | |
| | | REV B | | |

| | |
|----------|-------------|
| D | 2203772-4 |
| C | 2203772-3 |
| B | 2203772-2 |
| A | 2203772-1 |
| KEY CODE | PART NUMBER |