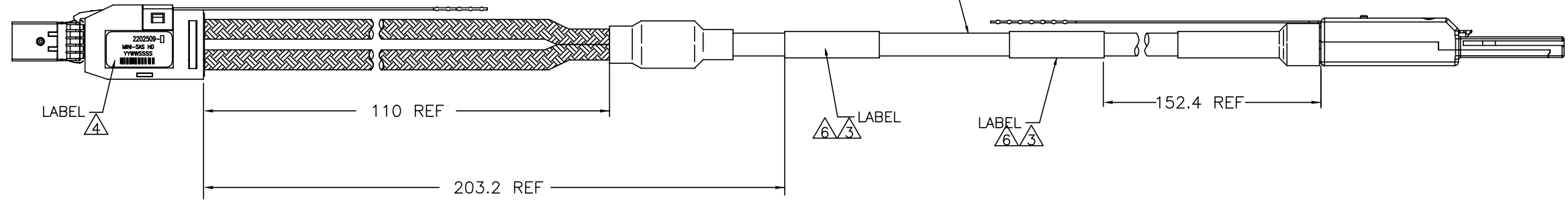
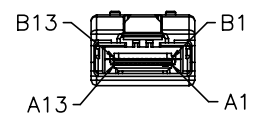
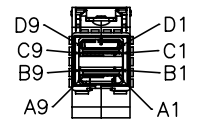
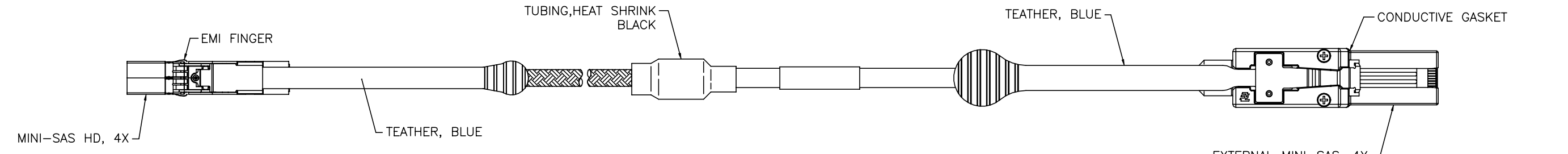
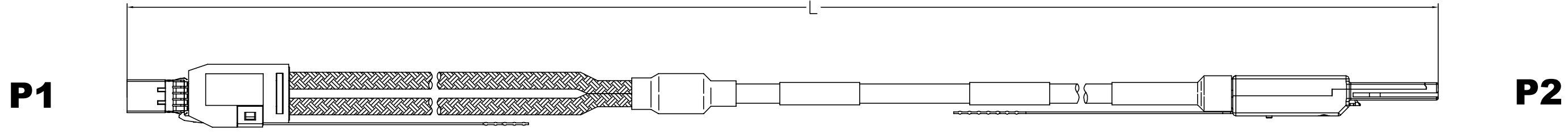
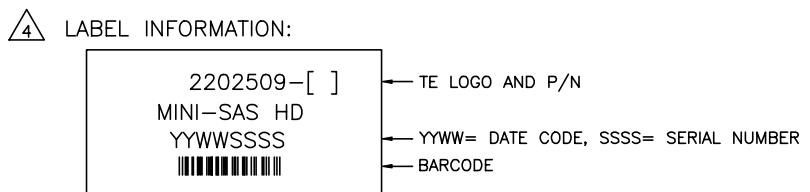
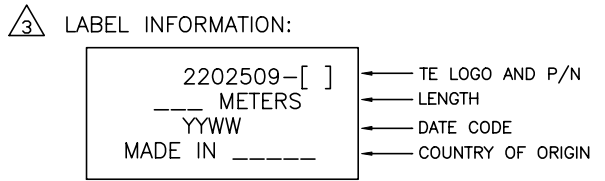


REVISIONS				
P	LTR	DESCRIPTION	DATE	APP'D
D1		REVISED PER ECO-20-015561	09DEC2020	AP HC



- ASSEMBLY TESTED FOR CONTINUITY, OPENS, SHORTS, EEPROM PROGRAM AND SIGNAL INTEGRITY.
- ROHS AND REACH COMPLIANCE: PRODUCT AND PROCESSING MEETS REQUIREMENTS OF TE SPECIFICATION TEC-138-702.



- MINI-SAS HD EEPROM PROGRAMMED PER 2202509\_EEPROM.
- 1 ONLY: LABEL IS APPLIED TO THE CENTER OF CABLE ASSEMBLY.

	3 <sup>+0.08</sup> <sub>-0</sub> METERS	2202509-4
	2 <sup>+0.08</sup> <sub>-0</sub> METERS	2202509-3
OBSOLETE	1 <sup>+0.08</sup> <sub>-0</sub> METERS	-2202509-2-
	0.5 <sup>+0.05</sup> <sub>-0</sub> METERS	-2202509-1-△
	L	PART NO

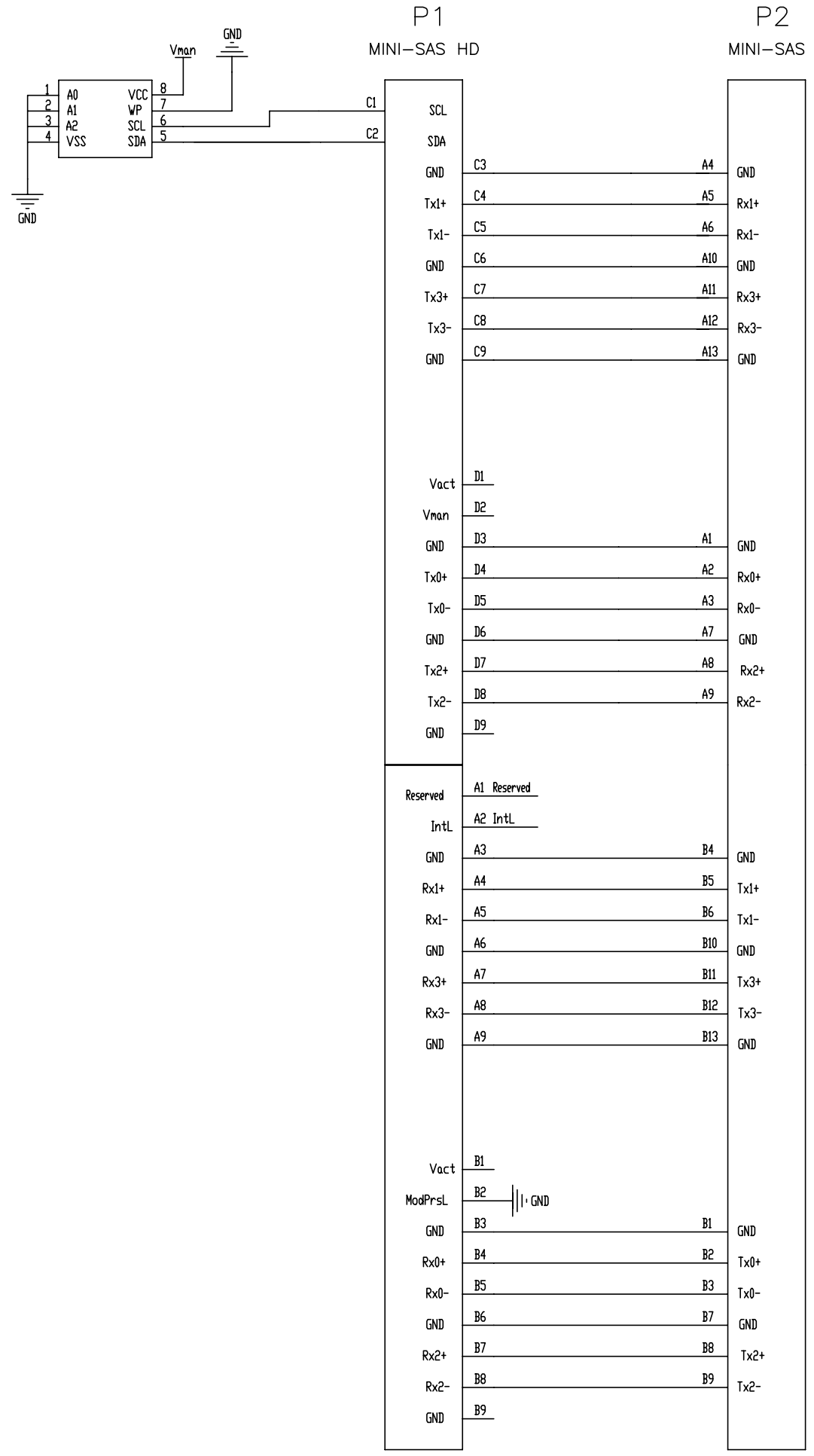
THIS DRAWING IS A CONTROLLED DOCUMENT.

DIMENSIONS: mm	TOLERANCES UNLESS OTHERWISE SPECIFIED:	0 PLC ± -	1 PLC ± -	2 PLC ± -	3 PLC ± -	4 PLC ± -	ANGLES ± -
MATERIAL	FINISH	WEIGHT	SCALE 1:1	SHEET 1 OF 2	REV D1	RESTRICTED TO	

TE Connectivity Ltd. CABLE ASSEMBLY, 30 AWG TURBOTWIN, MINI-SAS HD, 4X TO MINI-SAS, 4X

SIZE A1 CAGE CODE 00779 DRAWING NO C=2202509

REVISIONS				
P	LTR	DESCRIPTION	DATE	APPD
-	-	SEE SHEET 1	-	-



THIS DRAWING IS A CONTROLLED DOCUMENT.

DIMENSIONS: mm 	TOLERANCES UNLESS OTHERWISE SPECIFIED: 0 PLC ± - 1 PLC ± - 2 PLC ± - 3 PLC ± - 4 PLC ± - ANGLES ± -	DWN: P.L.I. CHK: J.MEYERS APVD: J.MEYERS DATE: 09MAR2012	NAME: J.MEYERS DATE: 09MAR2012
MATERIAL: - FINISH: -		WEIGHT: 0 SIZE: A1 CAGE CODE: 00779 DRAWING NO: C=2202509	
CUSTOMER DRAWING		RESTRICTED TO: - SCALE: 1:1 SHEET: 2 OF 2 REV: D1	

**TE** TE Connectivity Ltd.

CABLE ASSEMBLY, 30 AWG TURBOTWIN,  
MINI-SAS HD, 4X TO MINI-SAS, 4X

D  
C  
B  
A

D  
C  
B  
A