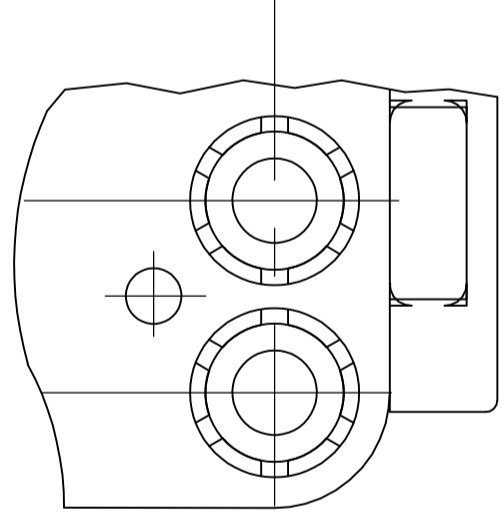
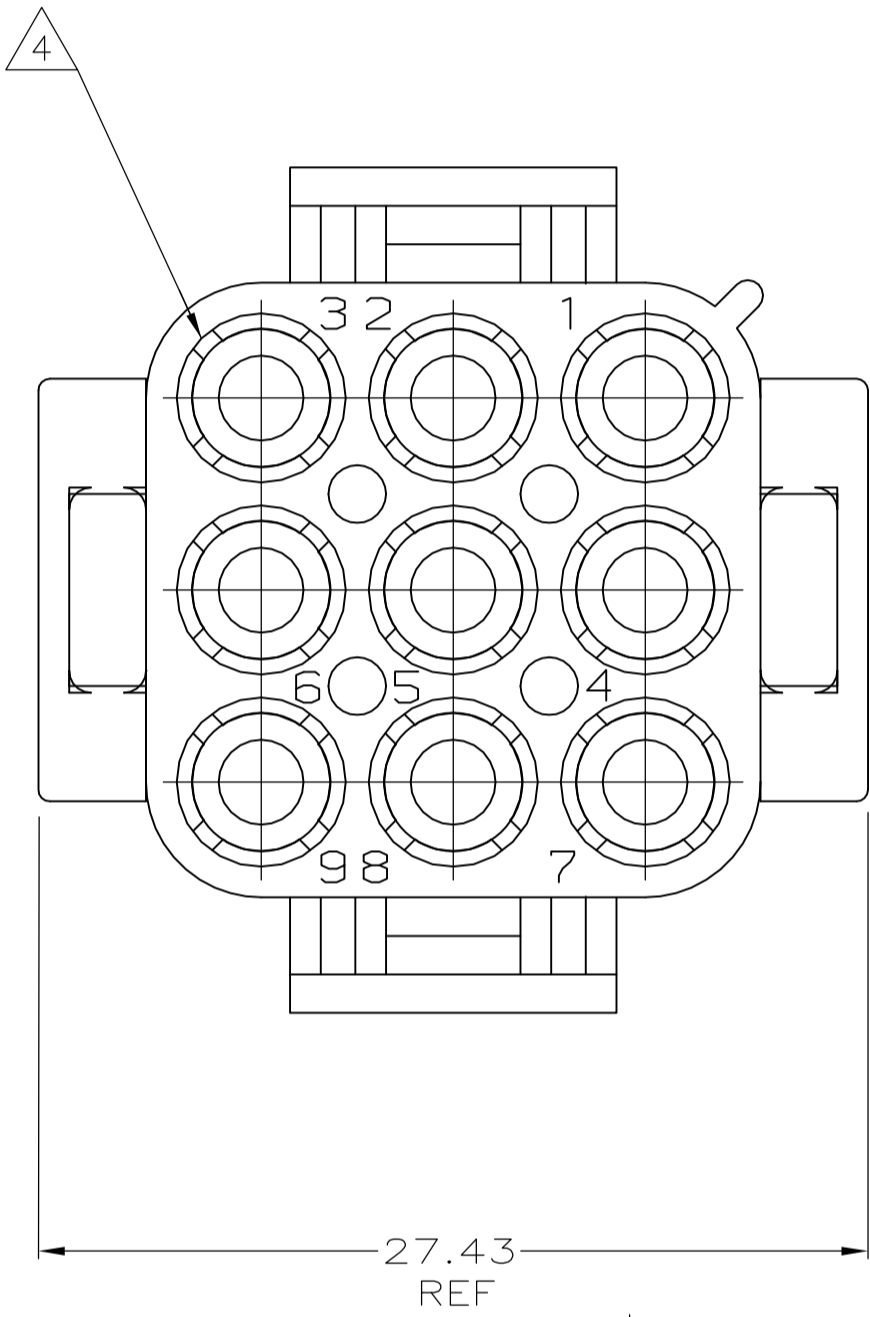
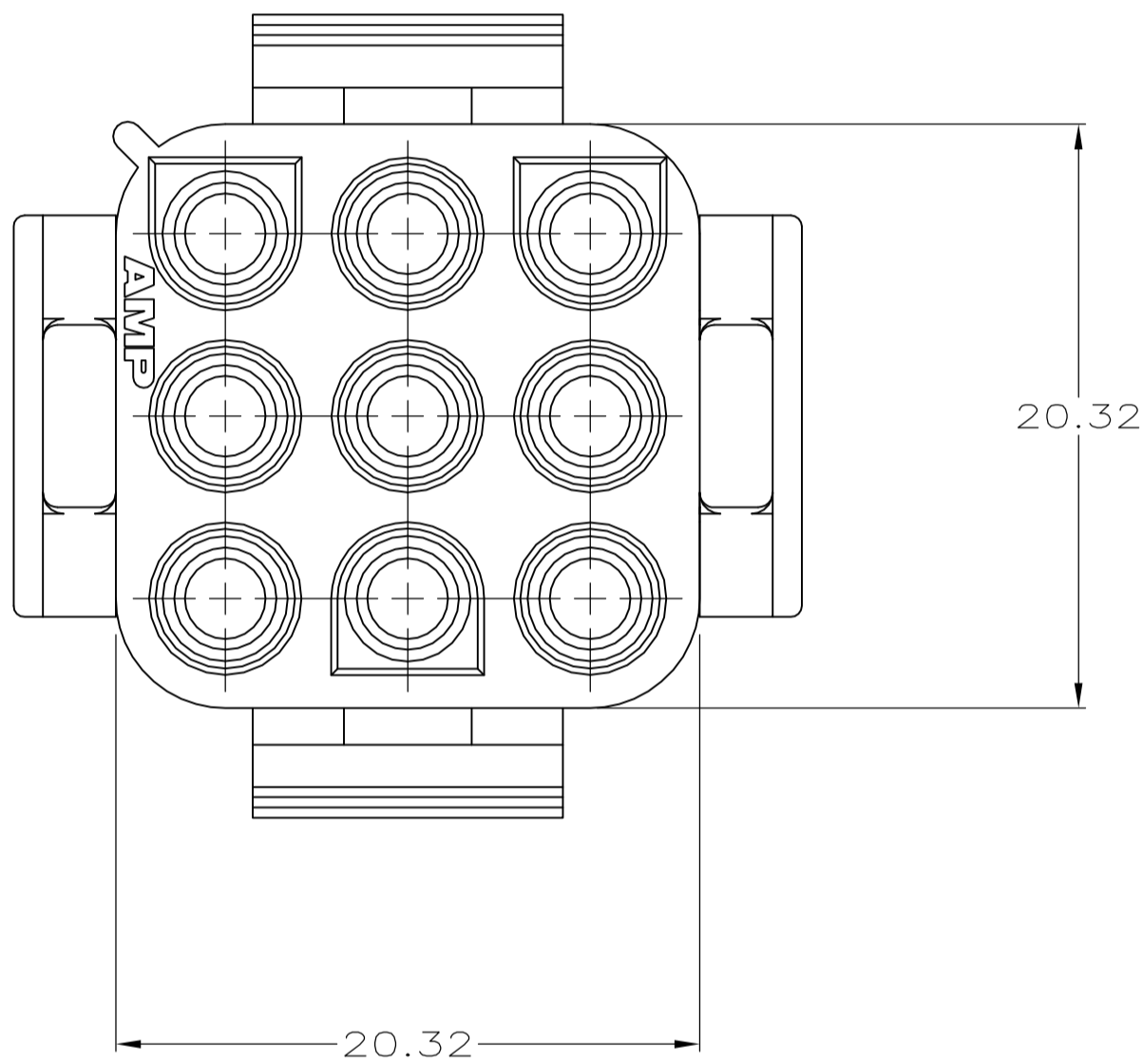
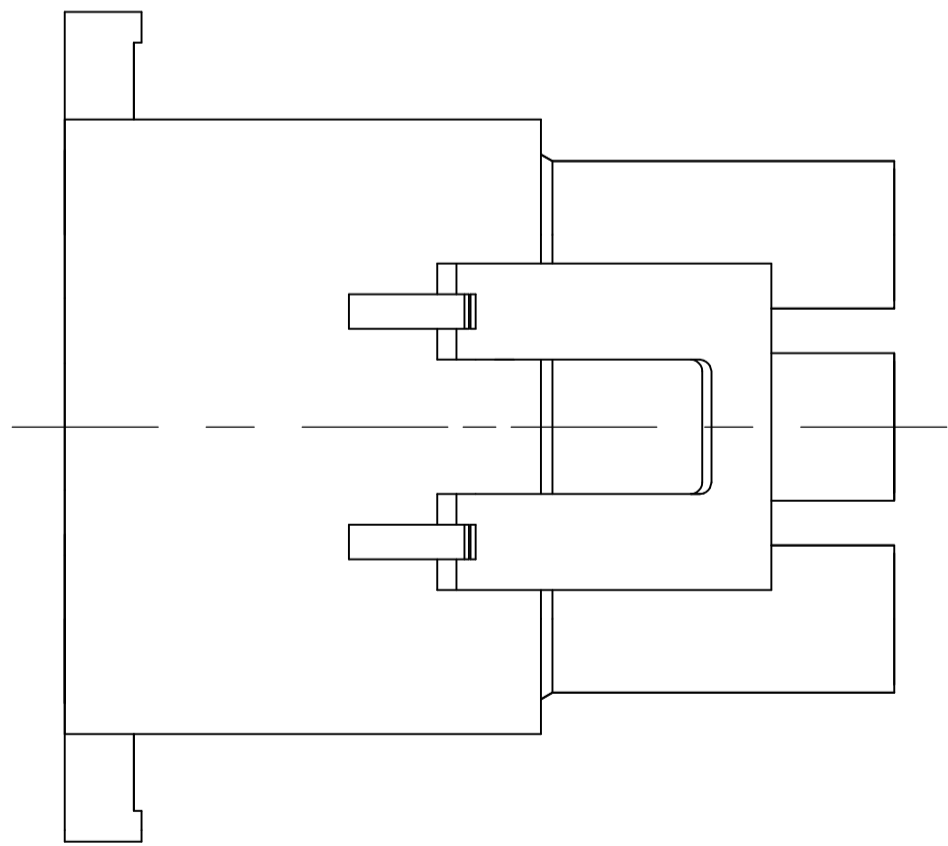
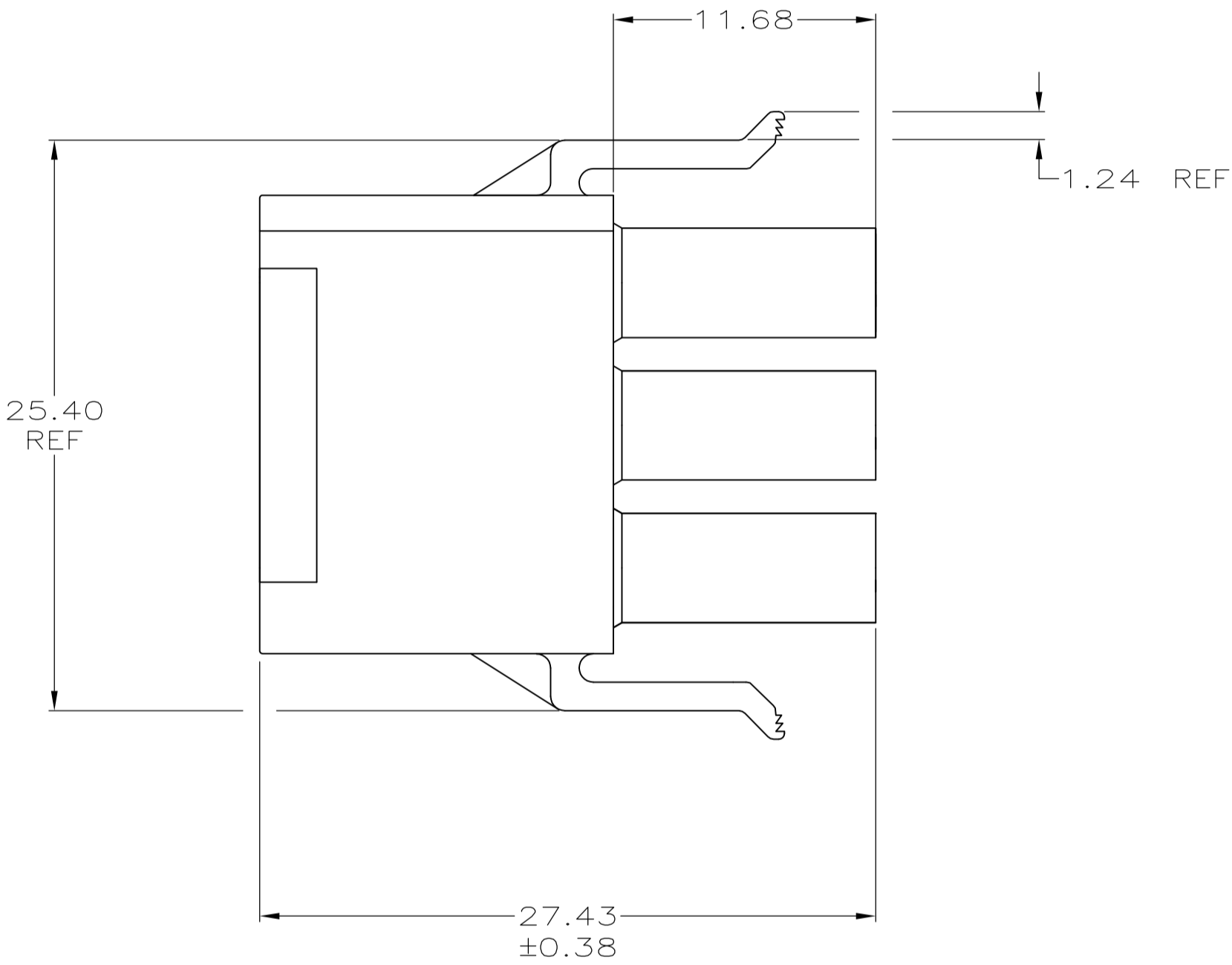


LOC		DIST		REVISIONS				
		53		REV	LTR	DESCRIPTION	DATE	DWN
				A1	REVISED	PER ECR-17-015922	06NOV2017	BDA

- 1
- MATES WITH APPROPRIATE UNIVERSAL MATE-N-LOK™ CAP OR HEADER.
- 2
- SMALL NICKS ARE PERMITTED ON THE CIRCUIT TOWERS WHICH COULD INCREASE THE INITIAL HOUSING MATING FORCE BY UP TO 4.4 NEWTONS [1.0 LBS]. NO INDIVIDUAL NICKED TOWER SHALL INCREASE THIS FORCE BY OVER 2.2 NEWTONS [.5 LBS].
- 3
- DIMENSIONS SHOWN REPRESENT PRODUCT IN DRY, AS MOLDED, CONDITION. ADDITIONAL 2% GROWTH DUE TO SUBSEQUENT MOISTURE ABSORPTION MAY OCCUR AND SHOULD BE ACCOUNTED FOR.
- 4
- FOUR RIBS EQUALLY SPACED, NO SPECIFIC ORIENTATION, OR SIX RIBS EQUALLY SPACED, NO SPECIFIC ORIENTATION, OPTIONAL
- 5
- PRELIMINARY – NOT FOR PRODUCTION.



OPTIONAL CONSTRUCTION 4



27.43	1.080
25.40	1.000
20.32	.800
11.68	.460
1.24	.049
0.38	.015
0.13	.005
MM	IN
CONVERSION TABLE	

NYLON UL94V-0 NATURAL		2178933-1
MATERIAL		PART NUMBER

THIS DRAWING IS A CONTROLLED DOCUMENT.		DWN ASHWINI.V 23JAN2014	TE Connectivity	
		CHK Z.DANIEL 23JAN2014		
DIMENSIONS: mm		APVD Z.DANIEL 23JAN2014	NAME	
		PRODUCT SPEC	PLUG, SHORT LATCH,9 CIRCUIT, UNIVERSAL MATE-N-LOK™	
		APPLICATION SPEC		
MATERIAL SEE TABLE		FINISH -	WEIGHT	RESTRICTED TO
			A100779C=2178933	-
		CUSTOMER DRAWING		SCALE 4:1 SHEET 1 OF 1 REV A1