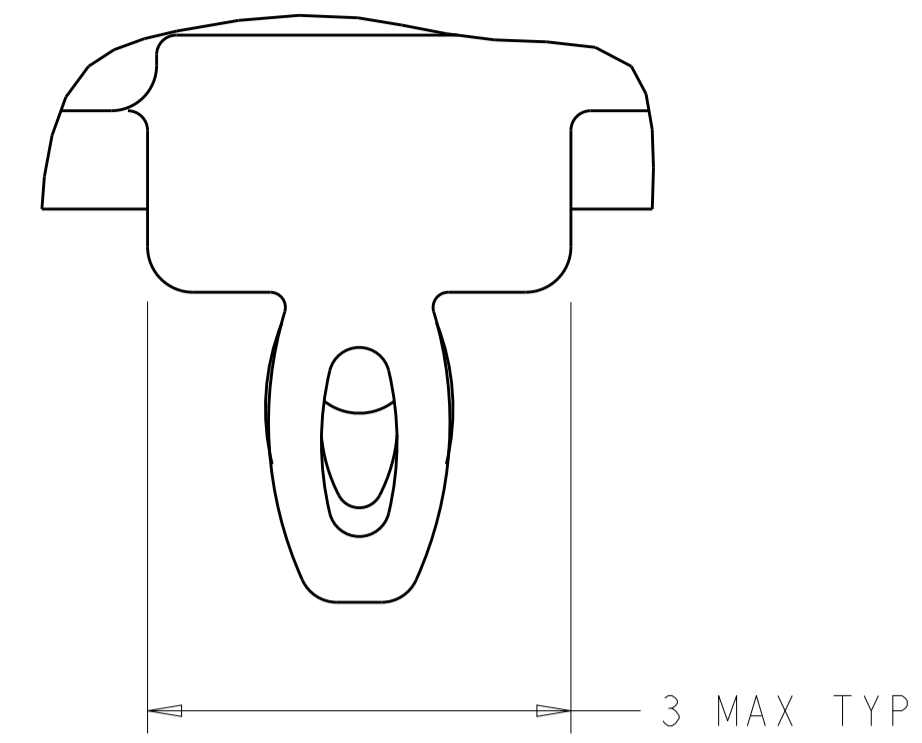


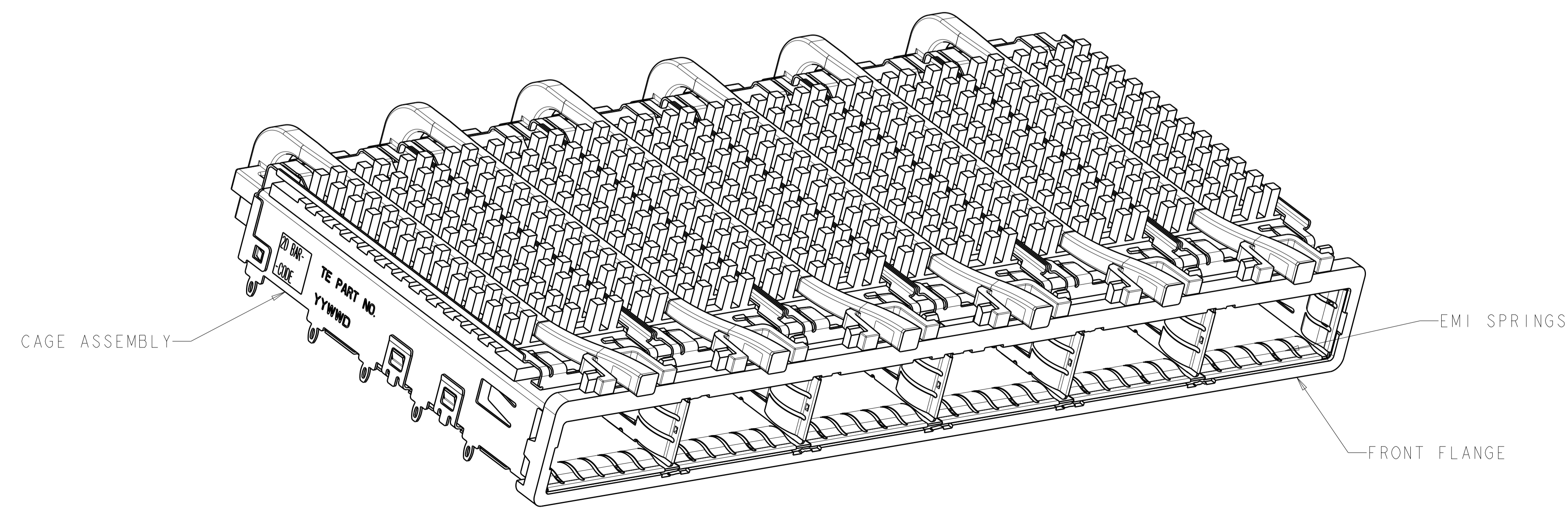
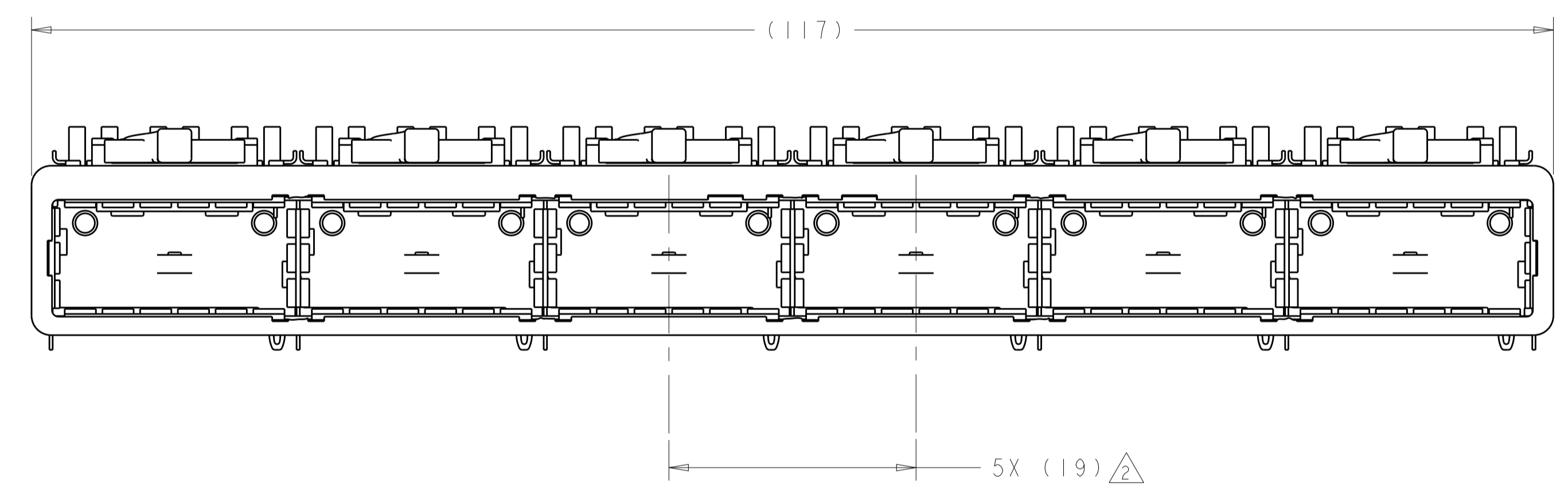
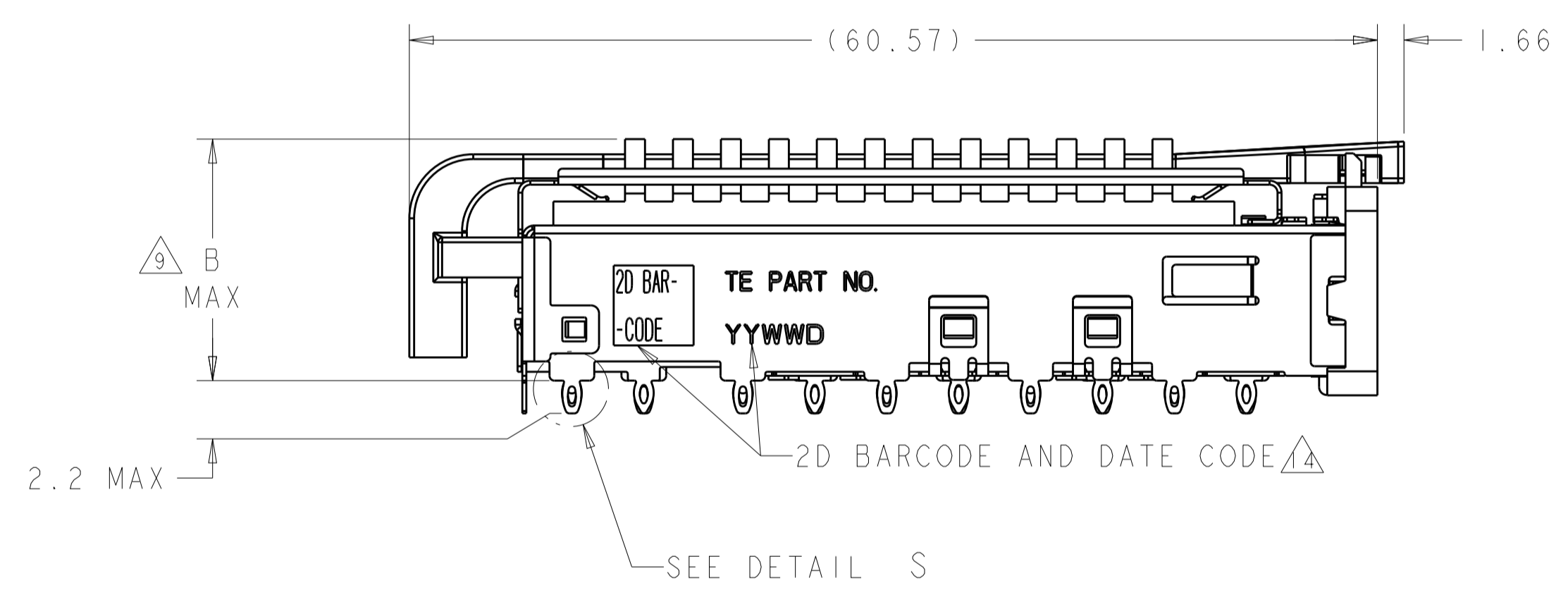
REVISIONS				
P.	LTM	DESCRIPTION	DATE	APVD
2		PRELIMINARY (UPDATED LIGHT PIPE)	16DEC2010	AL CW
3		REVISE PER ECO-14-016878	26NOV2014	RG MC
A		REVISED PER ECO-15-004977	10OCT2015	RG SH



DETAIL S  
 SCALE 20:1

- 1. CAGE ASSEMBLY MATERIAL: NICKEL SILVER, 0.25 THICK  
 HEAT SINK MATERIAL: ALUMINUM  
 HEAT SINK CLIP MATERIAL: STAINLESS STEEL  
 EMI SPRING MATERIAL: COPPER ALLOY  
 FRONT FLANGE MATERIAL: ZINC ALLOY  
 LIGHT PIPE MATERIAL: CLEAR POLYCARBONATE
- 2. PITCH BETWEEN PORTS OF ONE 1X6 CAGE ASSEMBLY.
- 3. SPACING BETWEEN CAGES ON THE SAME PC BOARD, TO BE SPECIFIED BY CUSTOMER, MUST COMPLY WITH MINIMUM DIMENSIONS SHOWN.
- 4. REFERENCE APPLICATION SPEC 114-13218 FOR RECOMMENDED DRILL HOLE DIAMETER AND PLATING THICKNESS.
- 5. DATUMS AND BASIC DIMENSIONS ESTABLISHED BY CUSTOMER.
- 6. DIMENSION F IS THE NOMINAL THICKNESS OF CUSTOMER SUPPLIED PC BOARD,  
 SINGLE SIDED PC BOARD MINIMUM THICKNESS = 1.45mm  
 DOUBLE SIDED PC BOARD MINIMUM THICKNESS = 2.2mm PER QSFP.
- 7. HEAT SINKS, LIGHT PIPES, AND HEAT SINK CLIPS SHIPPED ASSEMBLED TO CAGE ASSEMBLY. CAGE ASSEMBLY MAY BE PRESSED INTO THE PCB AS SHIPPED.
- 8. DATUM A IS TOP SURFACE OF PC BOARD.
- 9. DIMENSION APPLIES WITH MODULE INSERTED IN CAGE.
- 10. UNPLATED THRU HOLE.
- 11. MATES WITH QSFP MSA COMPATIBLE TRANSCEIVER.
- 12. SURFACE TRACES PERMITTED WITHIN THIS AREA EXCEPT WHERE CAGE STANDOFFS, SHOWN IN DETAIL S, CONTACT PC BOARD.
- 13. BASELINE FOR THESE DIMENSIONS IS THE CENTER OF COMPLIANT PIN HOLE.
- 14. 2D BARCODE AND DATE CODE (YYWWD) MARKED ON SIDE OF CAGE.

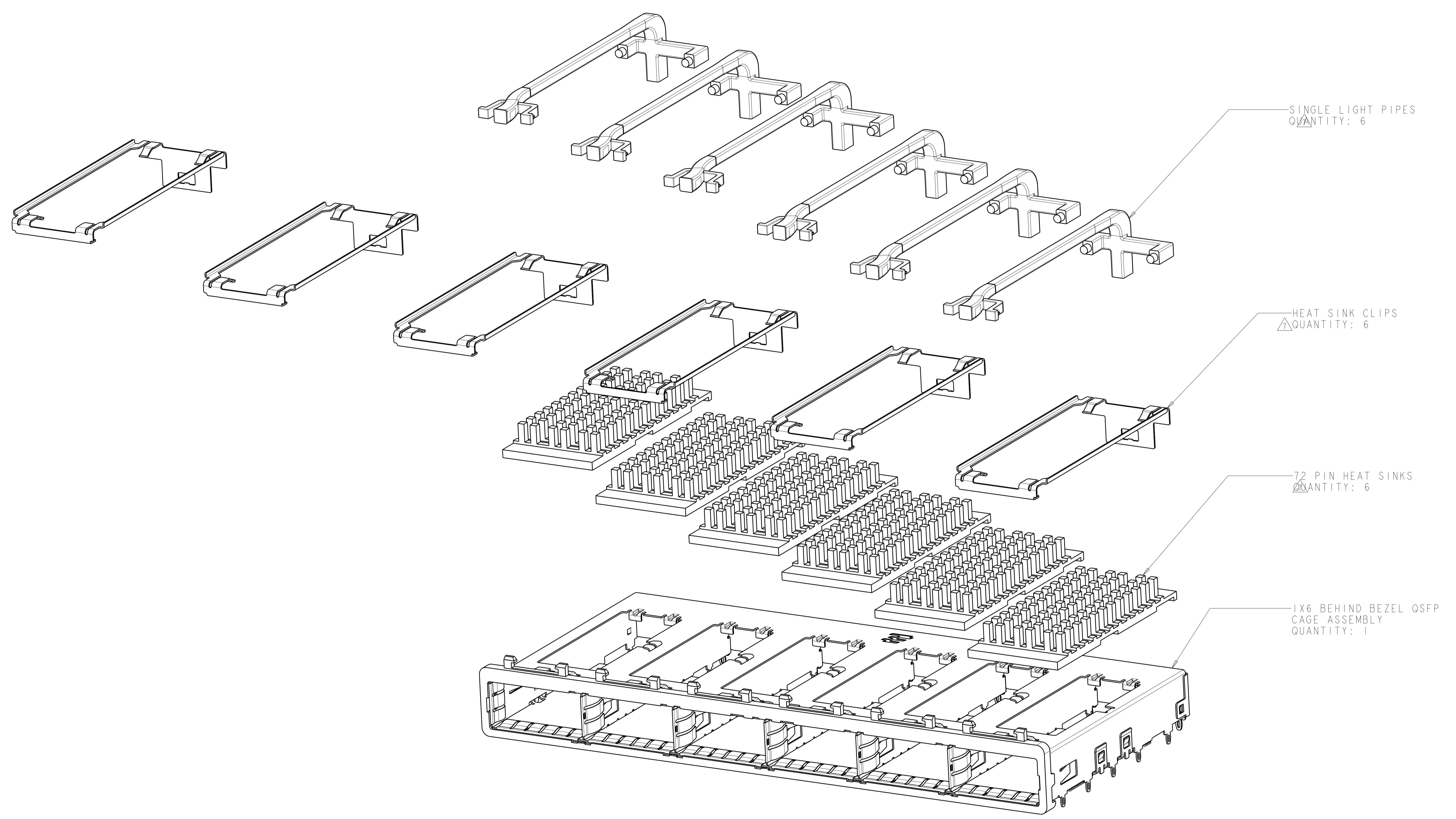
- 15. REFERENCE APP SPEC 114-13218 FOR GASKET THICKNESS CALCULATION.
- 16. EMI SPRING FINISH: 2um MINIMUM TIN  
 FRONT FLANGE FINISH: 3um MINIMUM TIN OVER 1.27um MINIMUM NICKEL OVER 5.08um MINIMUM COPPER.  
 HEAT SINK FINISH: NICKEL



23.0	NETWORKING	2170023-3
16.0	SAN	2170023-2
13.7	PCI	2170023-1
B	HEAT SINK PROFILE	PART NUMBER

THIS DRAWING IS A CONTROLLED DOCUMENT.		OWN: A LIU 15DEC2010	TE Connectivity NAME: 1X6 CAGE ASSEMBLY, BEHIND BEZEL, W/ SQP LIGHT PIPES AND HEAT SINKS, QSFP SIZE: CAGE CODE DRAWING NO. RESTRICTED TO A100779C=2170023
DIMENSIONS:		CHK: T XUE 15DEC2010	
TOLERANCES UNLESS OTHERWISE SPECIFIED:		APVD: C WANG 15DEC2010	
mm 0 PLC ± 1 PLC ±0.1 2 PLC ±0.1 3 PLC ±0.013 4 PLC ±0.0001 ANGLES ±		PRODUCT SPEC: 108-2286 APPLICATION SPEC: 114-13221 WEIGHT:	
MATERIAL: 1		FINISH: 16	
Customer Drawing		SCALE: 3:1	SHEET 1 OF 5 REV A

REVISIONS				
P.	LTN	DESCRIPTION	DATE	APVD
-	-	SEE SHEET 1	-	-



SINGLE LIGHT PIPES  
 QUANTITY: 6

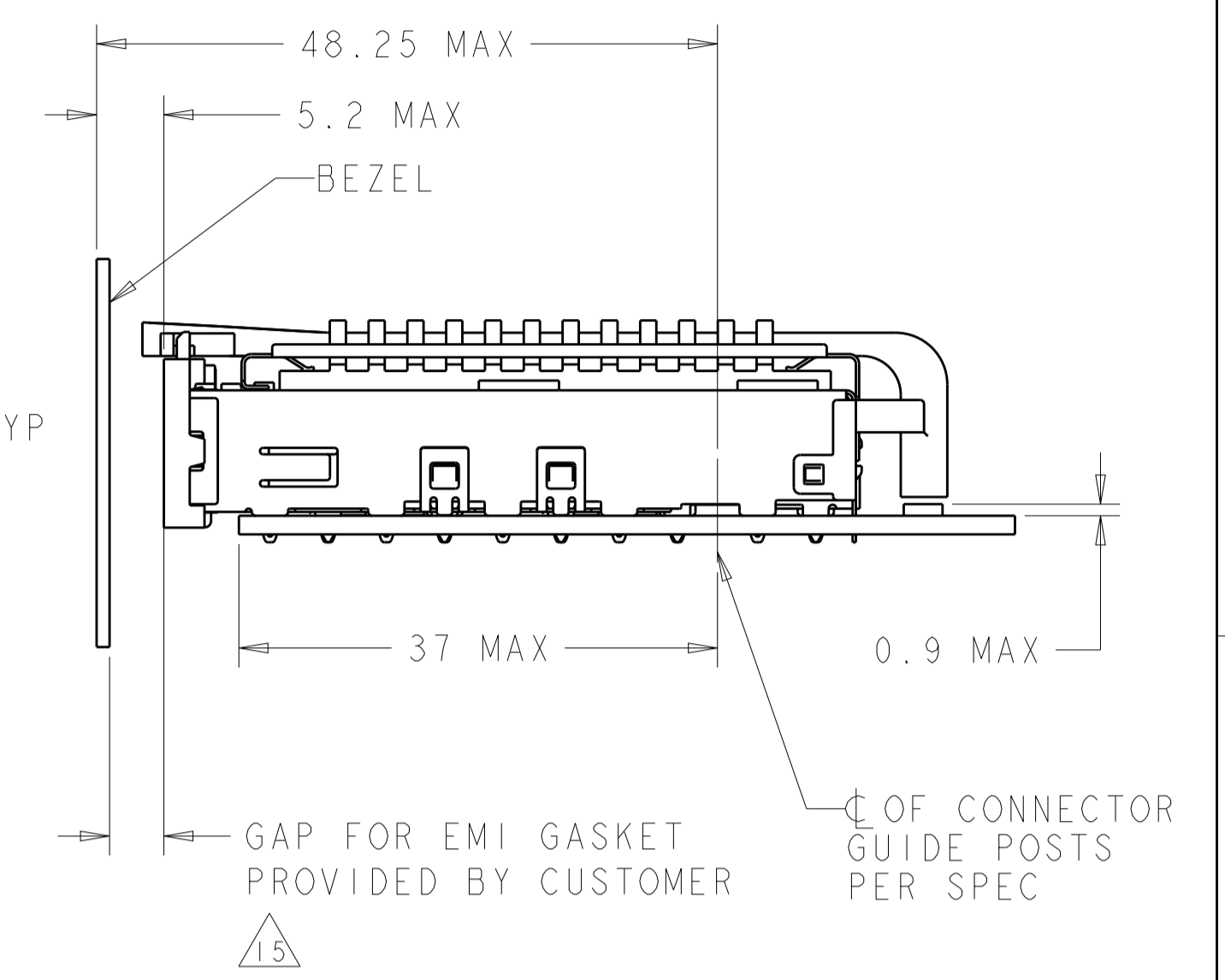
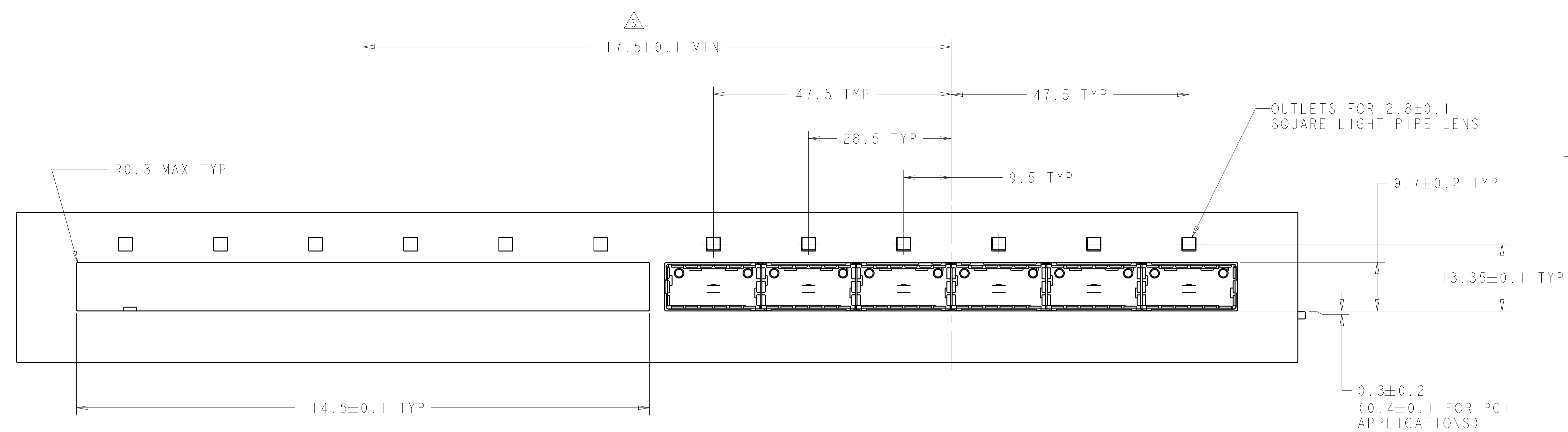
HEAT SINK CLIPS  
 QUANTITY: 6

72 PIN HEAT SINKS  
 QUANTITY: 6

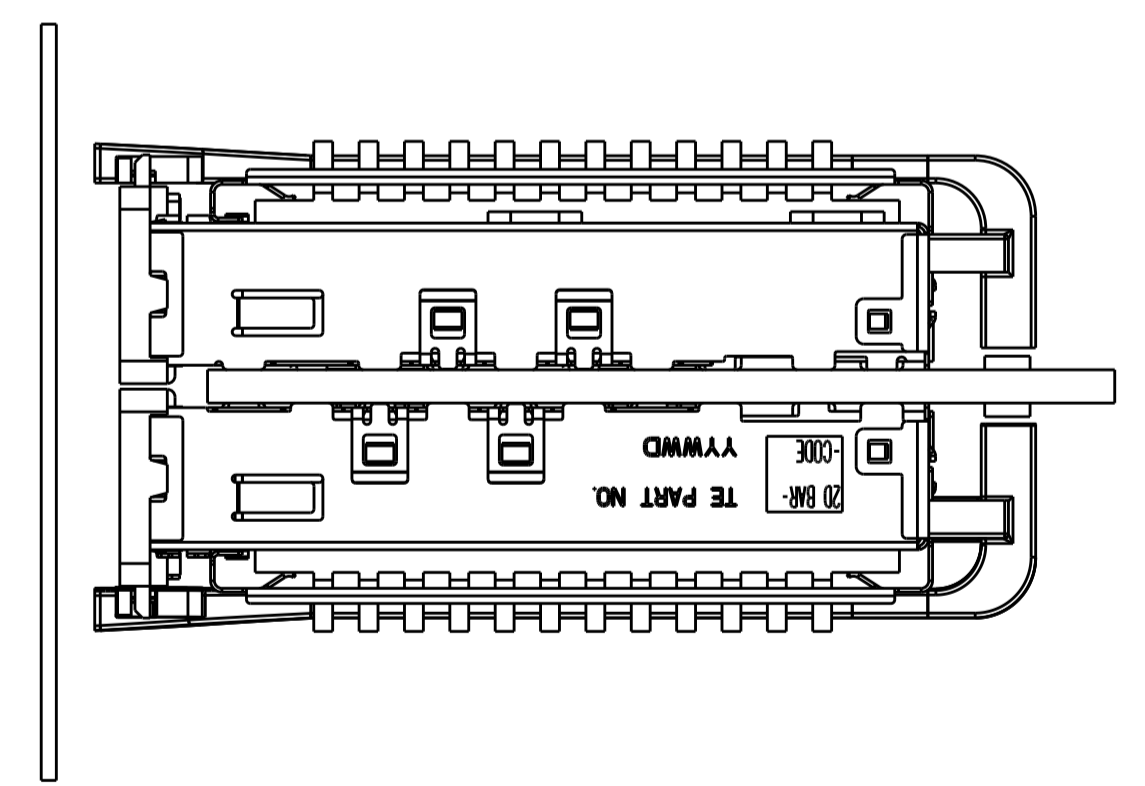
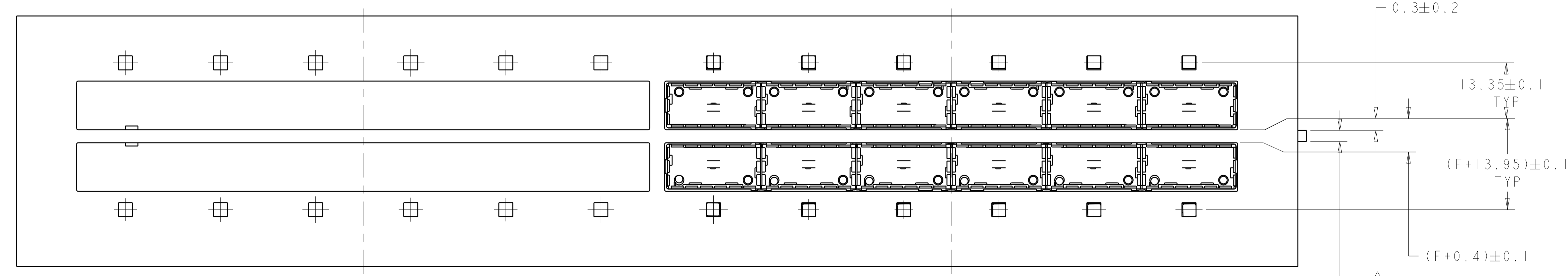
1X6 BEHIND BEZEL QSFP  
 CAGE ASSEMBLY  
 QUANTITY: 1

THIS DRAWING IS A CONTROLLED DOCUMENT.		OWN A. LIU 15DEC2010	TE Connectivity
DIMENSIONS: mm		CHK T. XUE 15DEC2010	
TOLERANCES UNLESS OTHERWISE SPECIFIED: 0 PLC ± 1 PLC ±0.1 2 PLC ±0.1 3 PLC ±0.013 4 PLC ±0.0001 ANGLES ±		APVD C. WANG 15DEC2010	NAME 1X6 CAGE ASSEMBLY, BEHIND BEZEL, W/ SQR LIGHT PIPES AND HEAT SINKS, QSFP
MATERIAL		PRODUCT SPEC 108-2286	APPLICATION SPEC
FINISH		SIZE A100779	CAGE CODE C=2170023
Customer Drawing		WEIGHT	RESTRICTED TO
SCALE 3:1		SHEET 2 OF 5	REV A

REVISIONS				
P.	LTN.	DESCRIPTION	DATE	APP'D.
-	-	SEE SHEET 1	-	-



ONE SIDED CONFIGURATION  
 SCALE 2:1

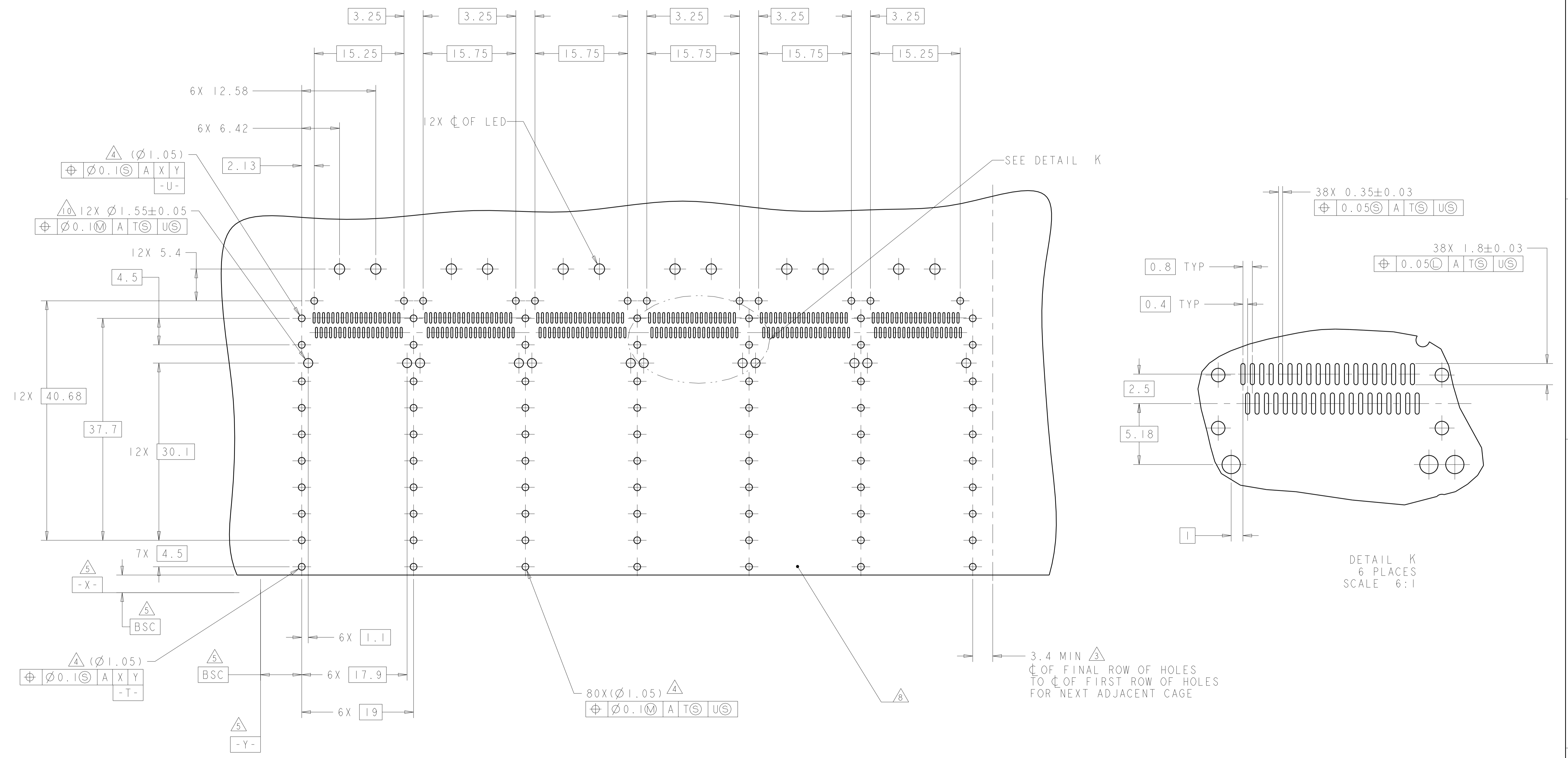


BELLY TO BELLY CONFIGURATION  
 SIMILAR TO ONE SIDED  
 EXCEPT WHERE NOTED  
 SCALE 2:1

THIS DRAWING IS A CONTROLLED DOCUMENT.		OWN A LIU 15DEC2010	TE Connectivity												
DIMENSIONS: mm		CHK T XUE 15DEC2010													
TOLERANCES UNLESS OTHERWISE SPECIFIED:		APP'D. C WANG 15DEC2010	NAME 1X6 CAGE ASSEMBLY, BEHIND BEZEL, W/ SQR LIGHT PIPES AND HEAT SINKS, QSFP												
<table border="1"> <tr> <td>0 PLC</td> <td>±</td> </tr> <tr> <td>1 PLC</td> <td>±0.1</td> </tr> <tr> <td>2 PLC</td> <td>±0.1</td> </tr> <tr> <td>3 PLC</td> <td>±0.013</td> </tr> <tr> <td>4 PLC</td> <td>±0.0001</td> </tr> <tr> <td>ANGLES</td> <td>±</td> </tr> </table>		0 PLC	±	1 PLC	±0.1	2 PLC	±0.1	3 PLC	±0.013	4 PLC	±0.0001	ANGLES	±	PRODUCT SPEC 108-2286	RESTRICTED TO
0 PLC	±														
1 PLC	±0.1														
2 PLC	±0.1														
3 PLC	±0.013														
4 PLC	±0.0001														
ANGLES	±														
MATERIAL		APPLIC. SPEC	SIZE CAGE CODE DRAWING NO												
FINISH		WEIGHT	A100779C=2170023												
		Customer Drawing	SCALE 4:1 SHEET 3 OF 5 REV A												



REVISIONS				
P.	LTN.	DESCRIPTION	DATE	APVD.
-	-	SEE SHEET 1	-	-



RECOMMENDED PC BOARD LAYOUT  
 BELLY TO BELLY CONFIGURATION  
 SEE SHEET 4 FOR COMPONENT AND TRACE KEEP-OUTS

THIS DRAWING IS A CONTROLLED DOCUMENT.		OWN: A L I U 15DEC2010	TE Connectivity
DIMENSIONS: mm		CHK: T XUE 15DEC2010	
TOLERANCES UNLESS OTHERWISE SPECIFIED:		APVD: C WANG 15DEC2010	NAME: 1X6 CAGE ASSEMBLY, BEHIND BEZEL, W/ SQR LIGHT PIPES AND HEAT SINKS, QSFP
0 PLC ±	1 PLC ±0.1	PRODUCT SPEC: 108-2286	SIZE: A1
2 PLC ±0.1	3 PLC ±0.013	APPLICATION SPEC: 114-13221	CAGE CODE: 2170023
4 PLC ±0.0001	ANGLES ±	WEIGHT: -	RESTRICTED TO: -
MATERIAL: -	FINISH: -	Customer Drawing	SCALE: 4:1 SHEET 5 OF 5 REV A