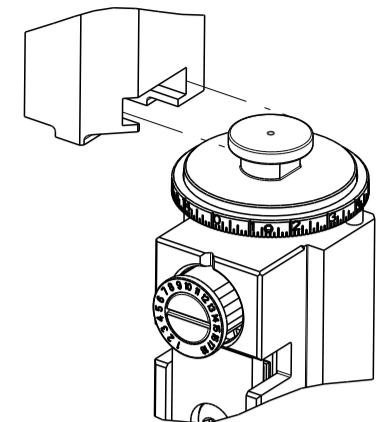


PART NUMBER	REVISION	DESCRIPTION	FEED TYPE
2151524-2	AC	FINE CRIMP HEIGHT ADJUST	PNEUMATIC
3-2151524-2	AC	FINE CRIMP HEIGHT ADJUST	DOUBLE ACTING PNEUMATIC WITH SENSORS
5-2151524-2	AC	SEAL STRIPPER CRIMPER TERMINATING UNIT	PNEUMATIC
7-2151524-7	V	CRIMP TOOLING KIT	-

ATLANTIC VERSION TERMINATOR INTERFACE ADAPTER



APPLICATOR DATA		
CRIMP	SIZE	TYPE
WIRE	1.07 mm [.042]	F
INSUL	1.27 mm [.050]	O
APPLICATOR INSTRUCTIONS 408-35042		

TERMINAL DATA: TE TERMINAL		TE CRIMP SPECIFICATION	
TERMINAL NAME: NANO MQS TERMINAL			
WIRE STRIP LENGTH		INSULATION DIAMETER RANGE	
3.50-3.80 mm [.138-.150 IN]		Ø1.20-1.30 mm [.047-.051 IN]	
TERMINAL APPLICATION SPECIFICATION	114-18858		
TERMINALS APPLIED			
TE TERMINAL	TE TERMINAL	TE TERMINAL	TE TERMINAL
2-1703930-1	2-1703930-2	2-1703930-3	2-1703930-4

TERMINAL DATA: TE TERMINAL		TE CRIMP SPECIFICATION	
TERMINAL NAME: MINI DYNMIC WIRE SIDE TERMINAL			
WIRE STRIP LENGTH		INSULATION DIAMETER RANGE	
3.55-3.75 mm [.139-.148 IN]		Ø0.95-1.30 mm [.037-.051 IN]	
TERMINAL APPLICATION SPECIFICATION	114-137526		
TERMINALS APPLIED			
TE TERMINAL	TE TERMINAL	TE TERMINAL	TE TERMINAL
2834464-6			

WIRE SIZE	CRIMP HEIGHT mm [INCH]	CRIMP HEIGHT REFERENCE SETTING
0.35mm2	0.78 +/- .02 [.0307 +/- .0008]	9.6

WIRE SIZE	CRIMP HEIGHT mm [INCH]	CRIMP HEIGHT REFERENCE SETTING
0.35mm2	0.72 +/- .02 [.0280 +/- .0008]	10.2
0.22mm2	0.64 +/- .02 [.0250 +/- .0008]	11.0

- RECOMMENDED SPARE PARTS
- REFER TO SUPPLIED INSTRUCTION SHEET FOR CLEANING, LUBRICATION AND STORAGE OF APPLICATOR.
- APPLY PART NUMBER 2-23419-6 LOCTITE TO THREADS OF ITEM 242.
- CRIMP HEIGHT REFERENCE SETTING WAS THE SETTING USED WHEN THE APPLICATOR WAS QUALIFIED AT THE FACTORY. ADJUSTMENT MAY BE NECESSARY WHEN RUNNING APPLICATOR IN THE FIELD.
- PRODUCTION ONLY ALLOWED WITH TOOLS WITH PNEUMATIC FEED. MECHANICAL FEED IS NOT ALLOWED.
- THIS APPLICATOR IS EQUIPPED WITH THE DOUBLE ACTING FEED WITH SENSORS AND IS APPLICATION SPECIFIC AND DOES NOT REQUIRE ITEM 49 & 248.
- TERMINAL LUBRICANT IS RECOMMENDED.
- 8. UNLESS SPECIFIED OTHERWISE TORQUE VALUES SHALL BE USED PER DOCUMENT, 101-35000.

**\*WARNING**  
ON INSTALLATION, SET WIRE DISC TO CRIMP HEIGHT REFERENCE SETTING FOR LARGEST WIRE SIZE. CRIMP HEIGHT REFERENCE SETTINGS GREATER THAN THE VALUE SHOWN MAY CAUSE DAMAGE TO THE CRIMP TOOLING. REFER TO THE INSTRUCTION SHEET FOR PROPER SETUP AND ADJUSTMENTS.

LOC	DIST	REVISIONS					
		P	LTN	DESCRIPTION	DATE	OWN	APVD
A	66	AA		ECR-21-120637	12NOV2021	FJ	RK
		AB		ECR-22-126544	13JAN2022	JWC	GB
		AB1		ECR-22-128110	30JAN2022	FZ	YY
		AC		ECR-24-212713	24JUN2024	ROY	GEB

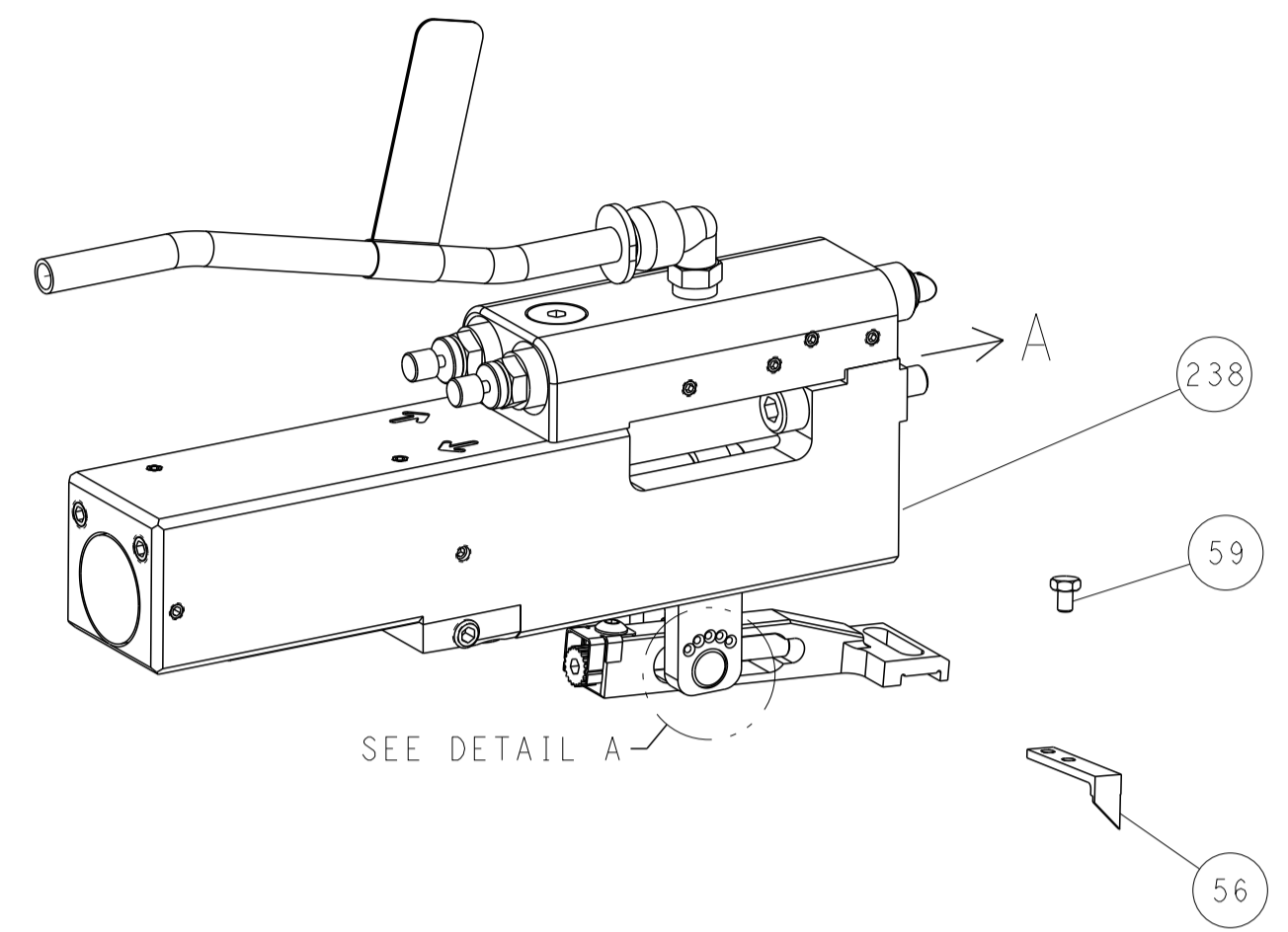
-	1	1	1	1803945-4	TONKER -		300
-	1	1	1	22278-9	SPRING, COMPRESSION		299
-	2	2	2	4-18032-3	SCR, SET, FLT PNT, M3 X 6.0		298
-	1	1	1	1803944-1	SPACER, TONKER		297
-	1	-	-	2-1803583-1	APPLICATOR BASIC ASSEMBLY, SF		292
-	-	1	-	2844950-1	AIR FEED MODULE		290
-	1	-	1	2119641-1	FEED CAM, AIR FEED		248
-	1	1	1	2119082-3	CAM, SNAIL, INSULATION ADJUSTMENT		244
-	1	1	1	2079764-1	WASHER, WAVE SPRING, CREST-TO-CREST		243
-	1	1	1	2119083-1	RETAINER, INSULATION DIAL		242
-	1	1	1	7-18023-7	SCR, SKT HD CAP M3 X 4.0		241
-	1	-	1	2844940-1	AIR FEED MODULE		238
-	REF	REF	REF	994970-2	COUNTER, MAGNETIC		164
-	1	1	1	1-22281-8	SPRING, COMPRESSION		121
-	1	1	1	2119955-1	ASSY, LUBRICATOR, SIDE FEED		113
-	1	1	1	2844908-1	SCREW, LOCKING		99
-	1	1	1	2844907-1	POST, LOCKING		98
-	2	2	2	2168083-1	SCR, SKT HD CAP, RoHS, M3 X 8.0		96
-	1	1	1	1-690438-0	FRONT STRIP GUIDE		95
-	1	1	1	2168083-6	SCR, SKT HD CAP, RoHS, M5 X 65		93
-	1	1	1	455888-5	SPACER, CRIMPER -		82
-	1	1	1	1803607-3	DOCUMENTATION PACKAGE		71
-	1	1	1	2119791-5	DEPRESSOR, WIRE		70
-	1	1	1	2119740-1	TAG, IDENTIFICATION		67
-	2	2	2	2168078-1	SCREW, DRIVE, RH, RoHS, 2 x .188		66
-	1	1	1	2168083-2	SCR, SKT HD CAP, RoHS, M4 X 8.0		60
-	1	1	1	5-18022-5	SCR, HEX HD CAP, M4 X 6.0		59
-	1	1	1	1338685-1	PAWL, FEED		56
-	4	4	4	2168083-3	SCR, SKT HD CAP, RoHS, M4 X 12.0		54
-	2	2	2	2168083-8	SCR, SKT HD CAP, RoHS, M4 X 16		53
-	1	-	1	18023-9	SCR, SKT HD CAP M4 X 6.0		49
-	-	1	1	1803583-9	APPLICATOR BASIC ASSEMBLY, SF		46
-	1	1	1	1803515-1	RAM ASSEMBLY, SF ATLANTIC		44
-	1	1	1	1803602-1	SCR, BHSC, RoHS (M8 X 25)		41
-	1	1	1	2-18032-5	SCR, SET, FLT PNT, M5 X 20.0		36
-	1	1	1	9-1752356-3	SUPPORT, TERMINAL		34
-	2	2	2	2079383-5	SCR, BHSC, RoHS (M4 X 20)		33
-	1	1	1	2-1722335-1	THREAD BOLT GEWINDEBOLZEN		31
-	2	2	2	2-2844962-3	SPACER, CYLINDRICAL, STRIP GUIDE		30
-	1	1	1	2844938-1	PLATE, STRIP GUIDE -		29
-	2	2	2	22283-1	SPRING, COMPRESSION		27
-	1	1	1	356835-1	LEVER, DRAG RELEASE		26
-	1	1	1	1803142-1	DRAG, TERMINAL		25
-	1	1	1	1320928-2	STRIP GUIDE -		24
-	1	1	1	980371-4	SCR, SKT HD SHLDR 5.0 DIA X 6.0		23
-	-	1	1	2168083-2	SCR, SKT HD CAP, RoHS, M4 X 8.0		21
-	1	2	2	1-18028-2	WASHER, FLAT, REG M4		20
-	-	1	1	2119533-1	STRIPPER, SIDE FEED		19
-	1	1	1	2119806-1	INSERT, SHEAR		13
-	1	1	1	3-22280-3	SPRING, COMPRESSION		12
-	1	1	1	2-519000-1	SCR, SKT HD CAP M4 X 10.0		11
-	1	1	1	2119805-1	SHEAR HOLDER, FRONT -		10
-	1	1	1	1803095-7	FLOATING SHEAR, FRONT -		9
-	1	1	1	6-1633620-7	ANVIL, COMBINATION		8
-	1	1	1	2-240641-4	SPACER		7
-	1	1	1	2119757-4	DEPRESSOR, SHEAR		5
-	1	1	1	2-238011-6	BLOCK, CRIMPER SPACER		4
-	1	1	1	1803143-6	CRIMPER, INSULATION O		3
-	1	1	1	2-1333281-7	CRIMPER, WIRE, F, SMALL WIRE APPLICATION		

DIMENSIONS: 		TOLERANCES UNLESS OTHERWISE SPECIFIED: 0 PLC ± 1 PLC ± 2 PLC ± 3 PLC ± 4 PLC ± ANGLES ± FINISH ±		DWG: B. WEAVER 01JUN2011 CHK: G. HOFENER APVD: T. ELBIN 01JUN2011	TE Connectivity Harrisburg, PA 17105-3608
MATERIAL: - FINISH: -		WEIGHT: - SCALE: 1:2		NAME: Ocean Side Feed Applicator SIZE: A1 CAGE CODE: 00779 DRAWING NO: 2151524 SHEET 1 OF 4 REV: AC	

LOC	DIST	REVISIONS					
A	66	P	LTN	DESCRIPTION	DATE	DWN	APVD
		-		SEE SHEET 1	-	-	-

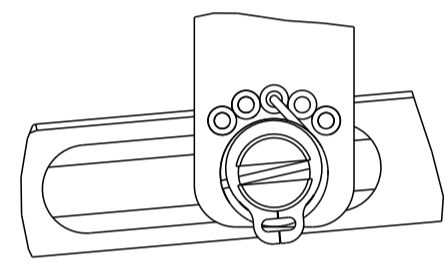
# FEED TYPE

## PNEUMATIC



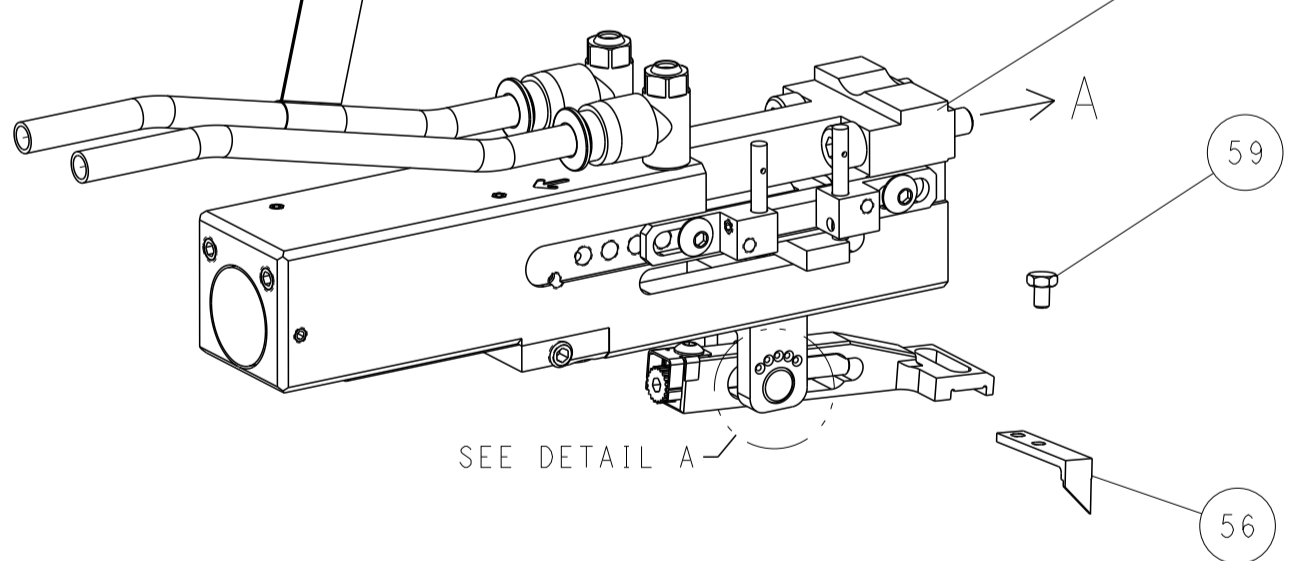
SEE DETAIL A

### FEED SPRING SETTING POSITION (SHOWN FROM REAR SIDE)



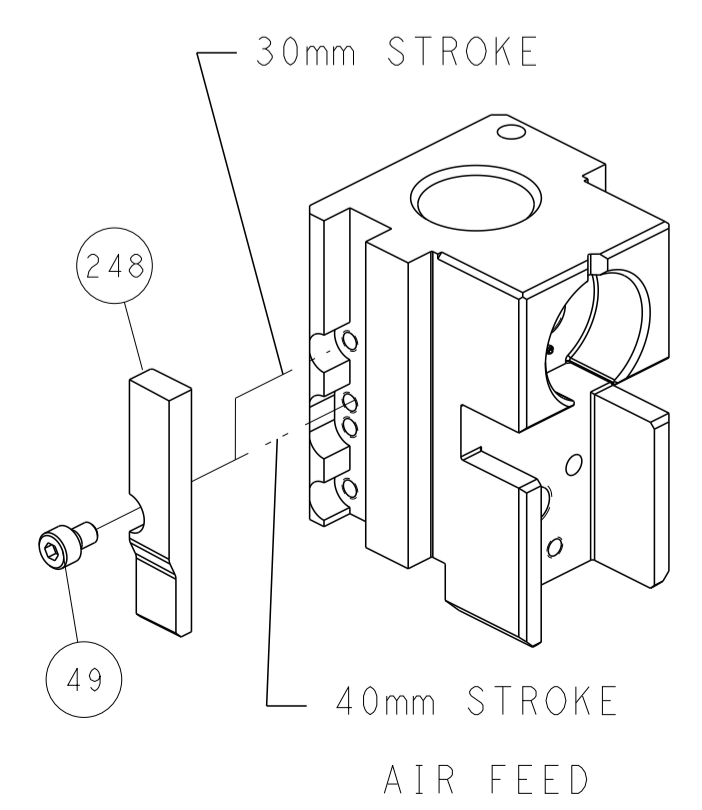
DETAIL A

### DOUBLE ACTING PNEUMATIC WITH SENSORS

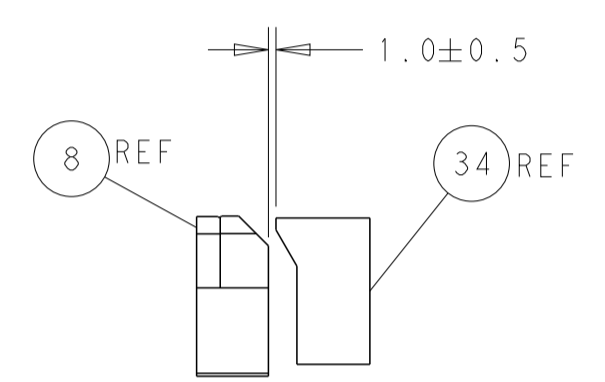
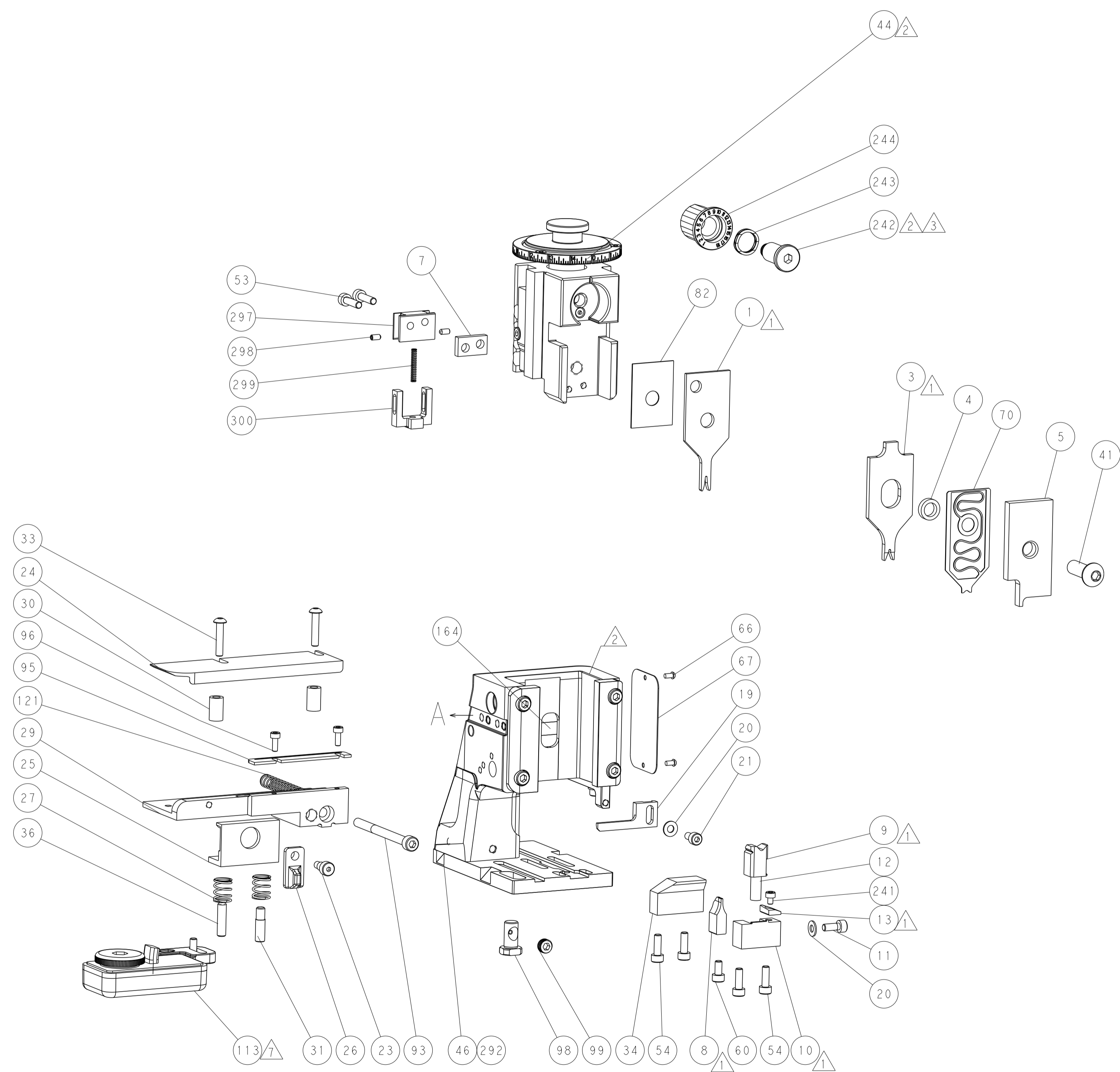


SEE DETAIL A

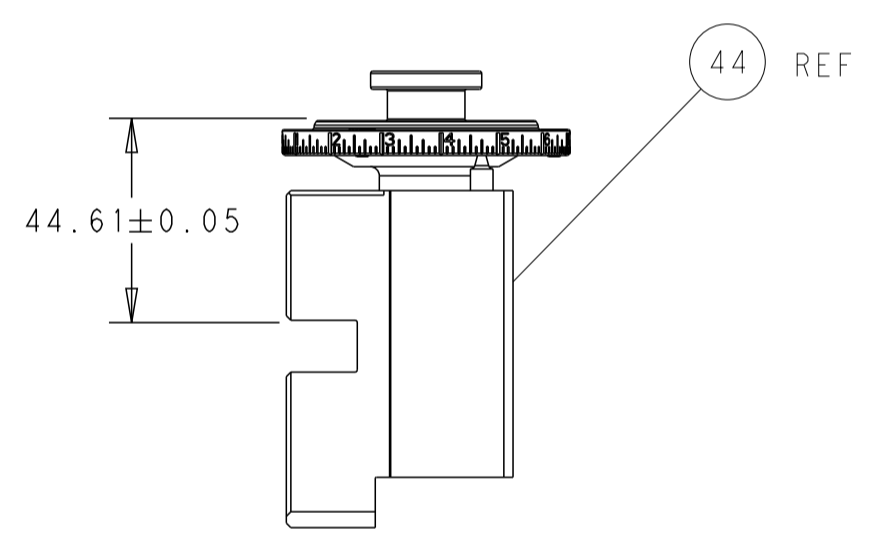
## CAM POSITION



AIR FEED

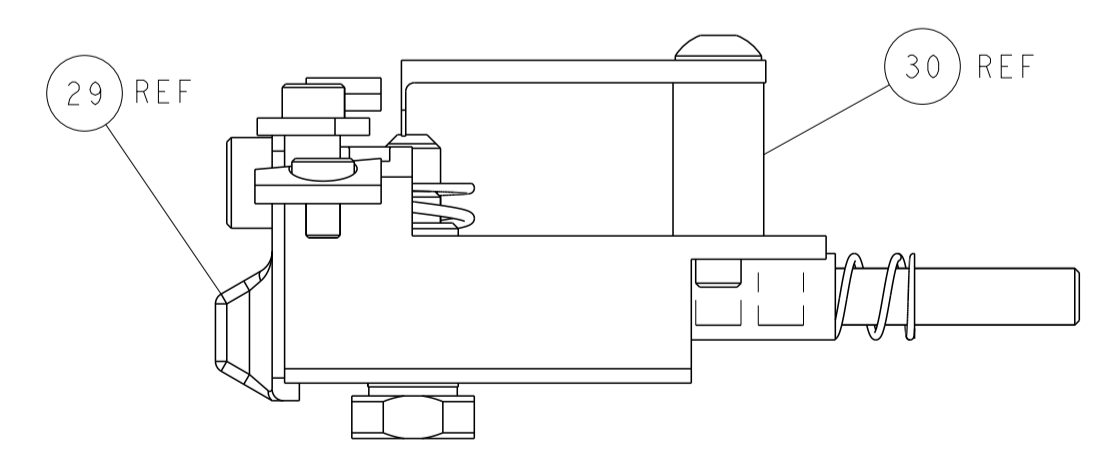


TERMINAL SUPPORT LOCATION



RAM AND HOLD-DOWN SET UP

ITEM 30 LOCATED AT FRONT HOLES



FEED TRACK POSITION GUIDE BY INSULATION BARREL

<small>THIS DRAWING IS UNPUBLISHED. RELEASED FOR PUBLICATION 2011 BY TYCO ELECTRONICS CORPORATION. ALL RIGHTS RESERVED.</small>		DWN: B. WEAVER 01JUN2011 CHK: G. HOFENER 01JUN2011 APVD: T. ELBIN 01JUN2011	NAME: Ocean Side Feed Applicator PRODUCT SPEC: - APPLICATION SPEC: -
DIMENSIONS: mm TOLERANCES UNLESS OTHERWISE SPECIFIED: 0 PLC ± 1 PLC ± 2 PLC ± 3 PLC ± 4 PLC ± ANGLES ± FINISH -	TOLERANCES UNLESS OTHERWISE SPECIFIED: 0 PLC ± 1 PLC ± 2 PLC ± 3 PLC ± 4 PLC ± ANGLES ± FINISH -	SIZE: A1 CAGE CODE: 00779 DRAWING NO: C=2151524 WEIGHT: - SCALE: 1:2	RESTRICTED TO: - SHEET 2 OF 4 REV AC