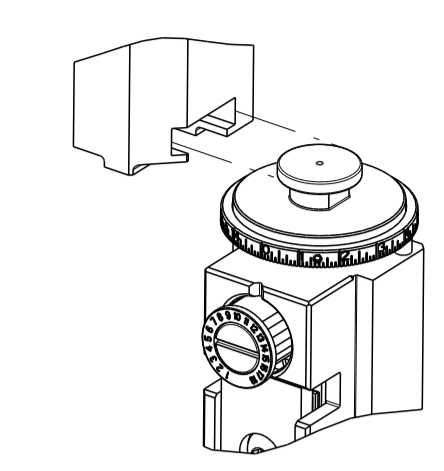


PART NUMBER	REVISION	DESCRIPTION	FEED TYPE
2151463-1	K	FINE CRIMP HEIGHT ADJUST	MECHANICAL
2151463-2	K	FINE CRIMP HEIGHT ADJUST	PNEUMATIC
7-2151463-7	K	CRIMP TOOLING KIT	-

ATLANTIC VERSION TERMINATOR
 INTERFACE ADAPTER



APPLICATOR DATA

CRIMP	SIZE	TYPE
WIRE	1.97 mm [.078]	F
INSUL	2.50 mm [.098]	O

APPLICATOR INSTRUCTIONS
 408-35042

TERMINAL DATA: FCI TERMINAL FORD CRIMP SPECIFICATION

WIRE STRIP LENGTH	INSULATION DIAMETER RANGE
4.71-4.72 mm [.185-.186 IN]	∅ 1.90 mm [.075 IN] MAX

TERMINAL APPLICATION SPECIFICATION FCI WLBD100 Rev 10.4

TERMINAL DATA: FCI TERMINAL FORD CRIMP SPECIFICATION

WIRE STRIP LENGTH	INSULATION DIAMETER RANGE
4.71-4.72 mm [.185-.186 IN]	∅ 1.90 mm [.075 IN] MAX

TERMINAL APPLICATION SPECIFICATION FCI WLBD100 Rev 10.4

TERMINALS APPLIED

TE TERMINAL	FCI TERMINAL	TE TERMINAL	INTERLOCK TERMINAL
1572901-1	10757690	1572901-4	JTP 1811-29
1572901-8	54001802	1572901-9	JTP 1811-29G
1-1572901-5	54001839	1572901-3	JTP 1811-66AU
1832575-1	54001803	TE TERMINAL	DAIMLER CHRYSLER
TE TERMINAL	NON-CHRYSLER TERMINAL	1572901-7	04687767
1572901-6	JS-1811-29	1-1572901-1	04707172
1-1572901-0	JS-1811-29G	1-1572901-3	04667819
1-1572901-2	JS-1811-66AU	TE TERMINAL	DELPHI PACKARD
-	-	1-1572901-4	10890230
-	-	1-1572901-6	15512735
-	-	1-1572901-7	54001800

TERMINALS APPLIED

TE TERMINAL	FORD TERMINAL	TE TERMINAL	APTIV TERMINAL
1-1572901-8	8U5T-14474-GA	2-1572901-2	15422510
1-1572901-9	DU5T-14474-JBB	2-1572901-3	33350993
2-1572901-0	NU5T-14474-ADA	2-1572901-4	35589655
2-1832575-1	NU5T-14474-AXA	2-1572901-5	33123737
1572901-5	F8V8-14474-BA	1-1572901-8	15418893

WIRE SIZE	CRIMP HEIGHT mm [INCH]	CRIMP HEIGHT REFERENCE SETTING
1.00mm2	1.40 +/- 0.05 [.055 +/- .002]	7.8
18 AWG	1.35 +/- 0.05 [.053 +/- .002]	8.3
0.75mm2	1.30 +/- 0.05 [.051 +/- .002]	8.9
0.50mm2	1.25 +/- 0.05 [.049 +/- .002]	9.3

***WARNING**
 ON INSTALLATION, SET WIRE DISC TO CRIMP HEIGHT REFERENCE SETTING FOR LARGEST WIRE SIZE. CRIMP HEIGHT REFERENCE SETTINGS GREATER THAN THE VALUE SHOWN MAY CAUSE DAMAGE TO THE CRIMP TOOLING, REFER TO THE INSTRUCTION SHEET FOR PROPER SETUP AND ADJUSTMENTS.

- 1 RECOMMENDED SPARE PARTS
- 2 REFER TO SUPPLIED INSTRUCTION SHEET FOR CLEANING, LUBRICATION AND STORAGE OF APPLICATOR.
- 3 APPLY PART NUMBER 2-23419-6 LOCTITE TO THREADS OF ITEM 242.
- 4 CRIMP HEIGHT REFERENCE SETTING WAS THE SETTING USED WHEN THE APPLICATOR WAS QUALIFIED AT THE FACTORY. ADJUSTMENT MAY BE NECESSARY WHEN RUNNING APPLICATOR IN THE FIELD.
- 5 TERMINAL LUBRICANT IS RECOMMENDED.
- 6. UNLESS SPECIFIED OTHERWISE TORQUE VALUES SHALL BE USED PER DOCUMENT, 101-35000.

LOC	DIST	REV	DATE	BY	CHKD	APPD
A	66	J	27AUG2021	FJ	RK	
		J1	31AUG2022	FZ	JAH	
		J2	26SEP2023	JWC	TE	
		K	21MAY2024	TB	GB	

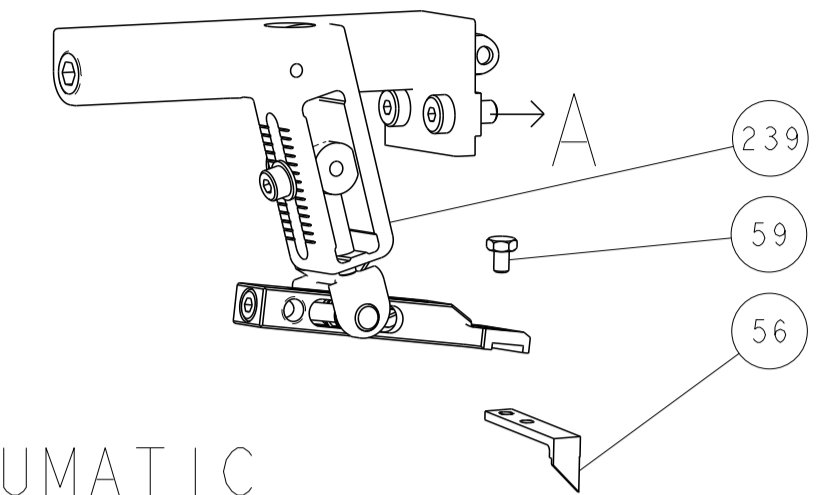
-	1	-	2119641-1	FEED CAM, AIR FEED	248	
-	1	1	2119082-4	CAM, SNAIL, INSULATION ADJUSTMENT	244	
-	1	1	2079764-1	WASHER, WAVE SPRING, CREST-TO-CREST	243	
3	-	1	1	2119083-1	RETAINER, INSULATION DIAL	242
-	1	1	7-18023-7	SCR, SKT HD CAP M3 X 4.0	241	
-	-	1	1	2119580-1	MECHANICAL FEED ASSEMBLY	239
-	1	-	1	2844940-1	AIR FEED MODULE	238
-	REF	REF	1	994970-2	COUNTER, MAGNETIC	164
5	-	1	1	2119955-1	ASSY, LUBRICATOR, SIDE FEED	113
-	1	1	1	2844908-1	SCREW, LOCKING	99
-	1	1	1	2844907-1	POST, LOCKING	98
-	1	1	1	318563-1	GUARD, FRONT CHIP	89
-	1	1	1	455888-6	SPACER, CRIMPER	82
-	1	1	1	1803607-3	DOCUMENTATION PACKAGE	71
-	1	1	1	2119740-1	TAG, IDENTIFICATION	67
-	2	2	1	2168078-1	SCREW, DRIVE, RH, RoHS, 2 x .188	66
-	1	1	1	2168083-2	SCR, SKT HD CAP, RoHS, M4 X 8.0	60
-	1	1	1	5-18022-5	SCR, HEX HD CAP, M4 X 6.0	59
-	1	1	1	1338685-1	PAWL, FEED	56
-	4	4	1	2168083-3	SCR, SKT HD CAP, RoHS, M4 X 12.0	54
-	2	2	1	1-2168083-0	SCR, SKT HD CAP, RoHS, M4 X 10	53
-	1	1	1	5018030-1	NUT, HEX, REG, RoHS, M3	52
-	1	1	1	811242-5	BUMPER, HOLD DOWN	51
-	1	1	1	690753-2	SPACER, TONKER	50
-	1	2	1	18023-9	SCR, SKT HD CAP M4 X 6.0	49
-	-	1	1	2119652-1	FEED CAM, PRE FEED	48
-	-	1	1	2119653-1	FEED CAM, POST FEED	47
-	1	1	1	1803583-9	APPLICATOR BASIC ASSEMBLY, SF	46
-	1	1	1	1803515-1	RAM ASSEMBLY, SF ATLANTIC	44
-	1	1	1	1803602-1	SCR, BHSC, RoHS (M8 X 25)	41
-	1	1	1	1752356-3	SUPPORT, TERMINAL	34
-	2	2	1	2079383-5	SCR, BHSC, RoHS (M4 X 20)	33
-	2	2	1	2-2844962-3	SPACER, CYLINDRICAL, STRIP GUIDE	30
-	1	1	1	2844992-2	ASSEMBLY, STRIP GUIDE	29
-	1	1	1	455888-3	SPACER, CRIMPER	28
-	1	1	1	1320928-2	STRIP GUIDE	24
-	1	1	1	2168083-2	SCR, SKT HD CAP, RoHS, M4 X 8.0	21
-	1	1	1	1-18028-2	WASHER, FLAT, REG M4	20
-	1	1	1	2119533-1	STRIPPER, SIDE FEED	19
1	-	1	1	2119806-1	INSERT, SHEAR	13
-	1	1	1	3-22280-3	SPRING, COMPRESSION	12
-	1	1	1	1-356885-3	STOP, SHEAR	11
1	-	1	1	2119805-1	SHEAR HOLDER, FRONT	10
1	-	1	1	1803095-6	FLOATING SHEAR, FRONT	9
1	1	1	1	4-1803756-6	ANVIL, COMBINATION	8
-	-	-	-	-	-	7
-	-	-	-	-	-	6
-	1	1	1	2119757-8	DEPRESSOR, SHEAR	5
-	1	1	1	2-238011-1	BLOCK, CRIMPER SPACER	4
1	1	1	1	2392094-2	CRIMPER, INSULATION O	3
-	1	1	1	455888-4	SPACER, CRIMPER	2
1	1	1	1	3-1803506-5	CRIMPER, WIRE F	1

DIMENSIONS: mm 		TOLERANCES UNLESS OTHERWISE SPECIFIED: 0 PLC ± 1 PLC ± 2 PLC ± 3 PLC ± 4 PLC ± ANGLES ± FINISH		MATERIAL: - FINISH: -	
MATERIAL: - FINISH: -		WEIGHT: - SCALE: A 00779 C=2151463		RESTRICTED TO: - SCALE: 1:2 SHEET 1 OF 4 REV K	

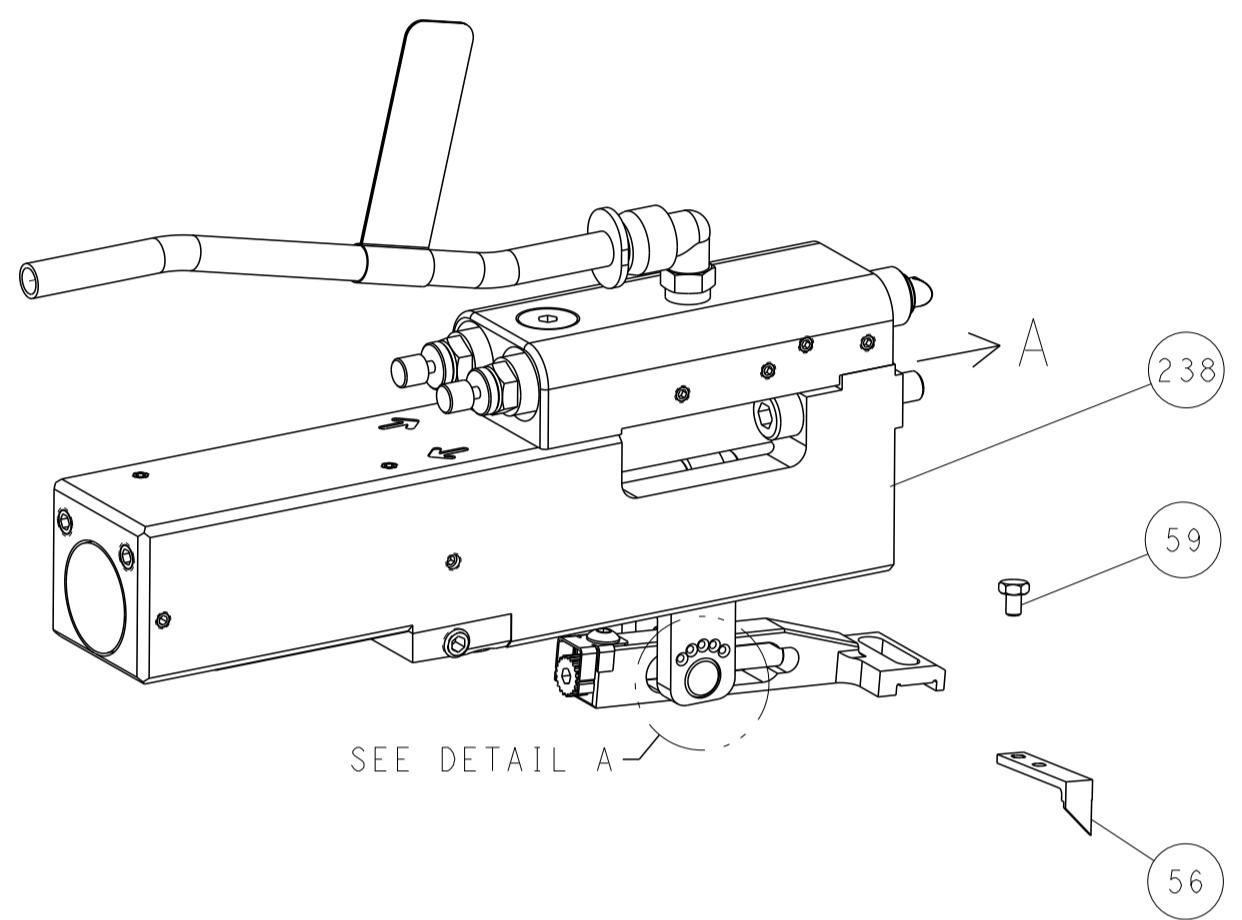
Customer Accessible Production Drawing

LOC		DIST		REVISIONS			
A	66	P	LTN	DESCRIPTION	DATE	OWN	APVD
		-		SEE SHEET 1			

FEED TYPE MECHANICAL



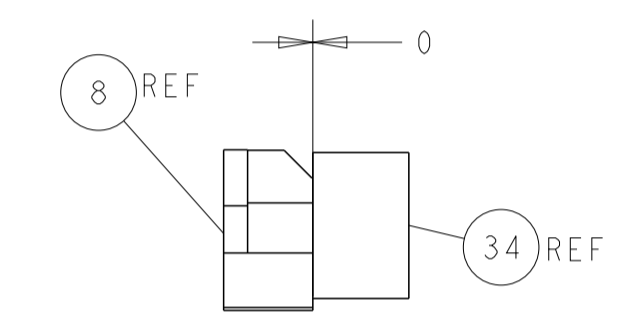
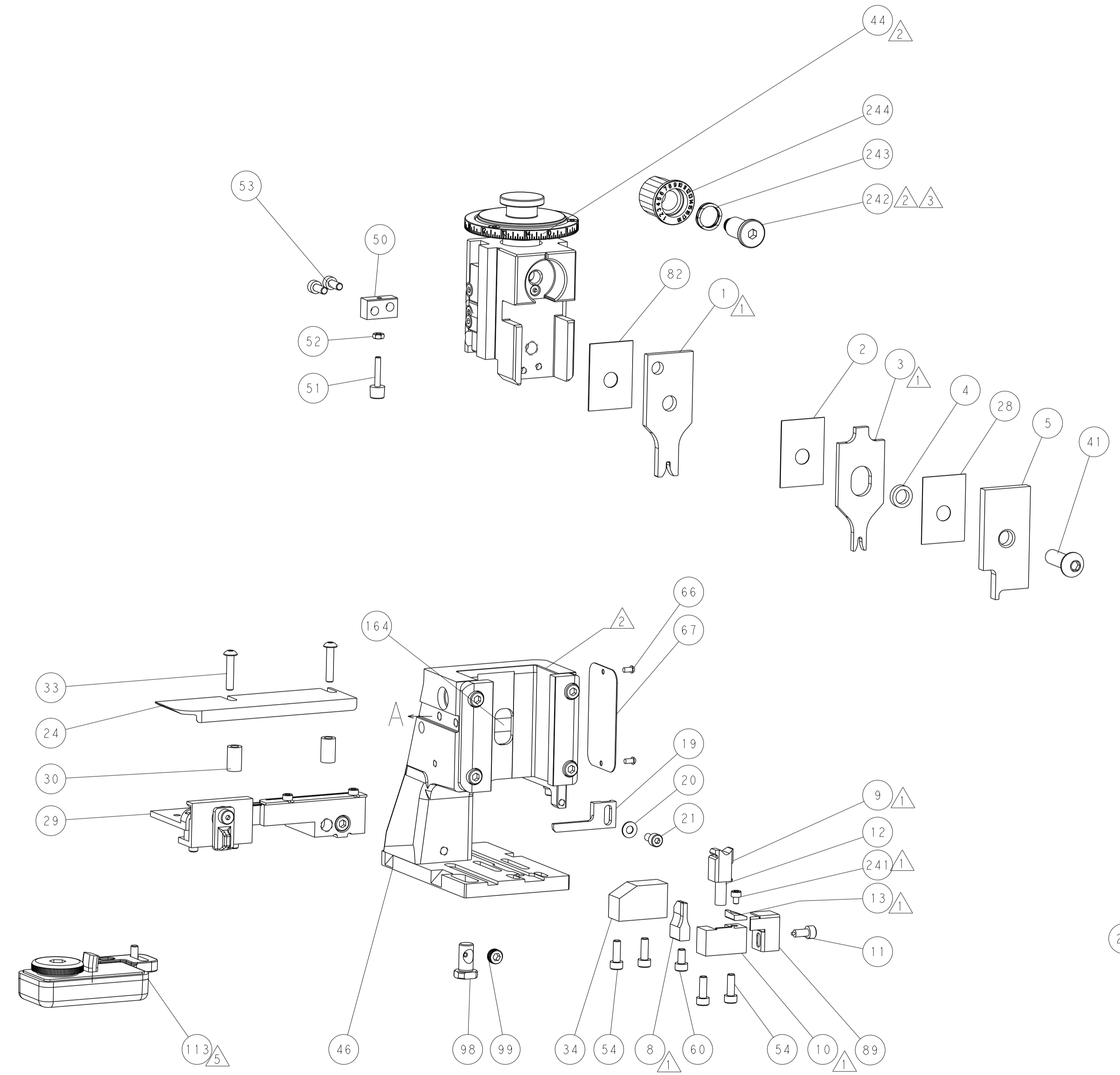
PNEUMATIC



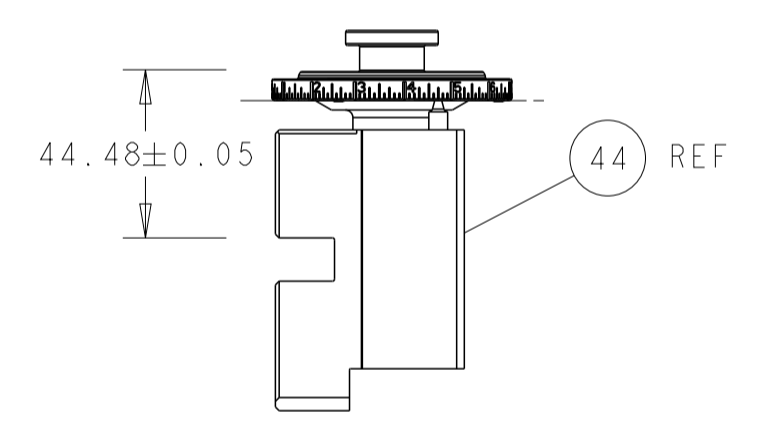
FEED SPRING SETTING POSITION (SHOWN FROM REAR SIDE)



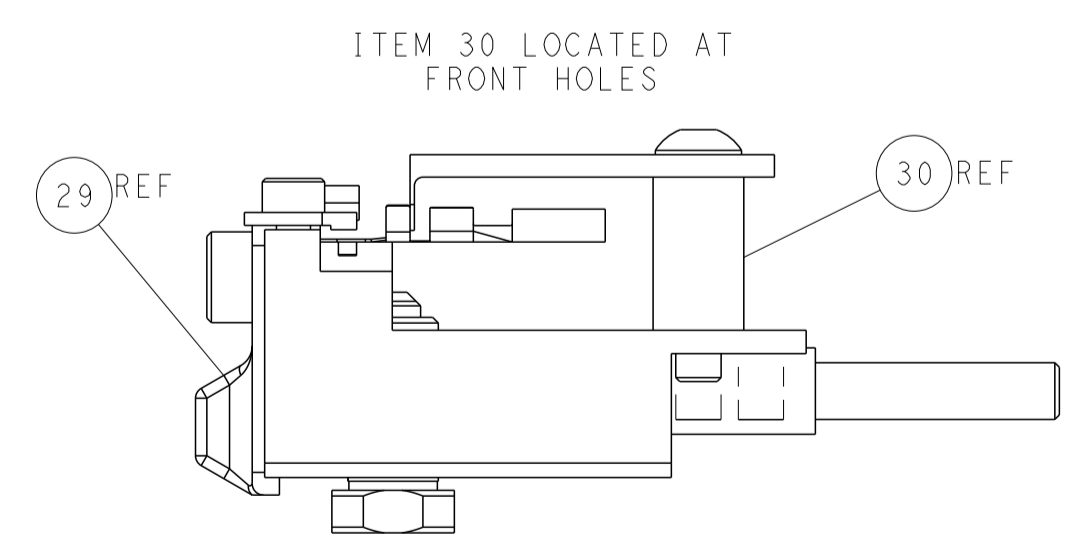
DETAIL A



TERMINAL SUPPORT LOCATION

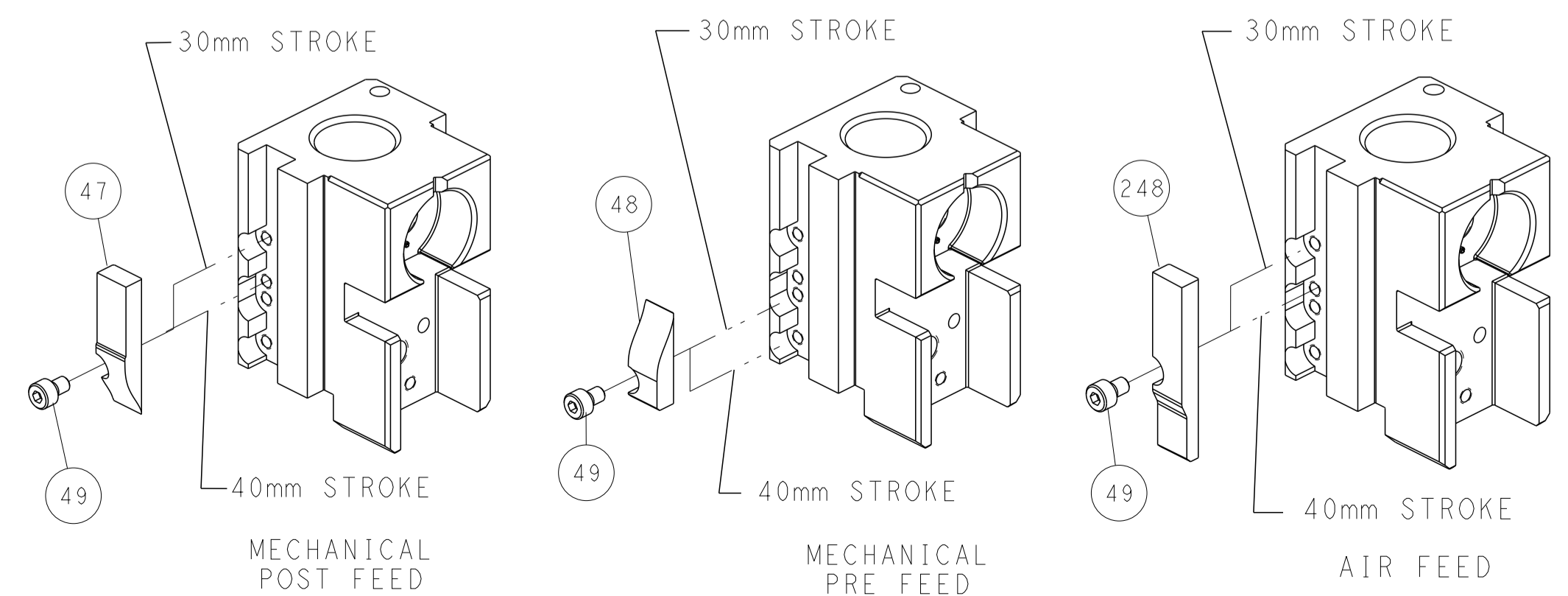


RAM SET-UP



FEED TRACK POSITION GUIDE BY INSULATION BARREL

CAM POSITIONS



DIMENSIONS:		TOLERANCES UNLESS OTHERWISE SPECIFIED:		DWG: BOB_HIGMAN 08MAR2012		TE Connectivity	
mm	0 PLC ±	1 PLC ±	2 PLC ±	3 PLC ±	4 PLC ±	Harrisburg, PA 17105-3608	
MATERIAL:		FINISH:		APVD: M. CLIFFORD 08MAR2012		NAME: Ocean Side Feed Applicator	
				PRODUCT SPEC:		SIZE: CAGE CODE: DRAWING NO: RESTRICTED TO:	
				APPLICATION SPEC:		A1 00779 ©=2151463	
				WEIGHT:		SCALE: 1:2 SHEET 2 OF 4 REV K	
				Customer Accessible Production Drawing		SHEETS 3 & 4 ARE NOT REQUIRED FOR ATLANTIC VERSION	