

ATLANTIC VERSION TERMINATOR INTERFACE ADAPTER	PART NUMBER	REVISION	DESCRIPTION	FEED TYPE	CONVERT TO	PART NUMBERS REQUIRED					
	2150836-1	A	FINE CRIMP HEIGHT ADJUST	MECHANICAL	PNEUMATIC FEED	2119950-1	2119792-2	-	2119641-1	-	2063440-1
	2150836-2	A	FINE CRIMP HEIGHT ADJUST	PNEUMATIC	SERVO LATCH PLATE	2119951-1	1901697-1	8-2150836-5	-	-	2168400-7 (QUANTITY 2)
					SMART APPLICATOR	2161326-1	-	8-2150836-4	-	-	-
					MECHANICAL FEED	2119949-1	2063961-1	5-18022-5	2119653-1	-	-
	2150836-5	A	FINE CRIMP HEIGHT ADJUST	SERVO LATCH PLATE ⁴	SERVO LATCH PLATE	2119951-1	1901697-1	8-2150836-5	-	-	2168400-7 (QUANTITY 2)
					SMART APPLICATOR	2161326-1	-	8-2150836-4	-	-	-
					MECHANICAL FEED	2119949-1	2063961-1	5-18022-5	2119653-1	-	-
2150836-6	A	NON-CRIMP HEIGHT ADJUST	SERVO LATCH PLATE ⁴	-	-	-	-	-	-	-	
2150836-7	A	FINE CRIMP HEIGHT ADJUST	NONE	-	-	-	-	-	-	-	
7-2150836-7	A	CRIMP TOOLING KIT	-	-	-	-	-	-	-	-	

APPLICATOR DATA		
CRIMP	SIZE	TYPE
WIRE	1.65 mm [.065]	○
APPL INSTRUCTIONS 408-10390		

TERMINAL DATA: STOCKO TERMINAL	STOCKO CRIMP SPECIFICATION		
TERMINAL NAME: END FEED CLAW TYPE TERMINAL			
WIRE STRIP LENGTH	INSULATION DIAMETER RANGE		
6.58-7.34 mm [.259-.289 IN]	∅ -		
TERMINAL APPLICATION SPECIFICATION	RSB 7849 V-1 Rev 13/10/2005		
TERMINALS APPLIED ³			
TE TERMINAL	STOCKO TERMINAL	TE TERMINAL	STOCKO TERMINAL
2113161-1	RSB 7849 V-1		

WIRE SIZE	CRIMP HEIGHT mm [INCH]	CRIMP HEIGHT REFERENCE SETTING
1.00mm ²	1.48+/-0.02 [.058+/-0.001]	5.9
18 AWG	1.36+/-0.02 [.054+/-0.001]	7.3
0.75mm ²	1.32+/-0.02 [.052+/-0.001]	7.7
0.50mm ²	1.20+/-0.02 [.047+/-0.001]	9.4

- ¹ RECOMMENDED SPARE PARTS
- ² GREASE BEARING SURFACES LIGHTLY
- 3. LUBRICATE DAILY PER THE APPLICATOR INSTRUCTION SHEET SUPPLIED WITH THE APPLICATOR.
- ⁴ APPLICATOR SPECIFIC DATA TO BE ENTERED INTO BLANK MEMORY CHIP AT ASSEMBLY. SEE BELOW FOR PART NUMBER:
 MECHANICAL FEED WITH "SMART APPLICATOR" CONVERSION: 8-2150836-4
 PNEUMATIC FEED WITH "SMART APPLICATOR" CONVERSION: 8-2150836-4
 SERVO FEED WITH "FINE CRIMP HEIGHT ADJUST": 8-2150836-5
 SERVO FEED WITH "NON-CRIMP HEIGHT ADJUST": 8-2150836-6
- 5. ADJUSTMENT OF THE STRIPPER MAY BE REQUIRED WHEN MOVING THE APPLICATOR BETWEEN BENCH AND LEADMAKER APPLICATIONS.
- ⁶ APPLY PART NUMBER 1-23419-5 LOCTITE TO THREADS OF ITEMS 62. FOR -6 ONLY APPLY PART NUMBER 1-23419-5 LOCTITE TO THREADS OF ITEMS 37.
- ⁷ GREASE THREADS, GROOVE AND O-RING ON ITEMS 35 & 252.
- ⁸ MAGNET, ITEM 166 MUST BE ORIENTED CORRECTLY IN ORDER TO PROPERLY ACTUATE THE COUNTER.
- ⁹ CRIMP HEIGHT REFERENCE SETTING WAS THE SETTING USED WHEN THE APPLICATOR WAS QUALIFIED AT THE FACTORY. ADJUSTMENT MAY BE NECESSARY WHEN RUNNING APPLICATOR IN THE FIELD.
- ¹⁰ SPARE FEED CAM STORAGE LOCATION REFER TO INSTRUCTION SHEET FOR ADDITIONAL INFORMATION.
- ¹¹ THE RECOMMENDED SET-UP FOR END FEED APPLICATORS IS POST-FEED WITH ITEM 2119653-1. THE APPLICATOR CAN BE CONFIGURED FOR PRE-FEED WITH ITEM 2119652-1 BUT MAY ENCOUNTER PROBLEMS WITH SOME APPLICATIONS. FEED ISSUES OR TERMINAL JAMMING MAY OCCUR IN THE PRE-FEED CONFIGURATION.
- ¹² WHEN ASSEMBLING -6 NON-CRIMP HEIGHT ADJUST APPLICATOR USE SHIM PACK 2119957-2 TO ALIGN APPLICATOR'S MAXIMUM WIRE CRIMP HEIGHT AT NORMAL TERMINATOR SHUT HEIGHT
- ¹³ TERMINAL LUBRICANT IS RECOMMENDED.

***WARNING**
 ON INSTALLATION, SET WIRE DISC, ITEM 40 TO LARGEST WIRE SIZE SETTING. USE OF SETTINGS BELOW MINIMUM REQUIRED CRIMP HEIGHT SETTING WILL CAUSE DAMAGE TO CRIMP TOOLING.

-77	-7	-6	-5	-2	-1	PART NO	DESCRIPTION	ITEM NO
-	-	1	-	-	-	2119957-2	APPLICATOR SHIM PACK	260
-	1	-	1	1	1	8-21084-0	O-RING, .676 ID, .070 DIA. MAT.	252
-	-	-	-	1	-	2119640-1	PUSH ROD, AIR FEED	250
-	-	-	-	1	-	1803259-1	BUSHING, FLANGED	249
-	-	-	-	1	-	2119641-1	FEED CAM, AIR FEED	248
-	1	-	1	1	1	2119798-1	DETENT PIN	247

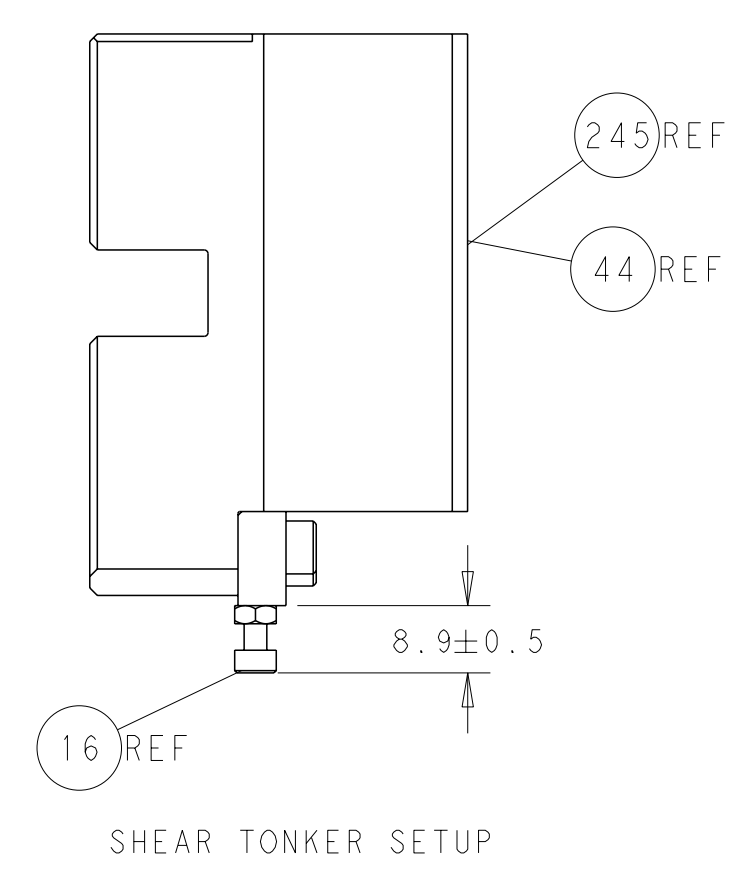
ATLANTIC VERSION
 Shown on sheets 1 of 4 & 2 of 4
 (Pacific version shown on sheets 3 of 4 & 4 of 4)

SET UP GAUGE	LOC	DIST	REVISIONS					
2119599-2	A	66	P	LYH	DESCRIPTION	DATE	OWN	APVD
			A		RELEASED	09NOV2017	BW	CT

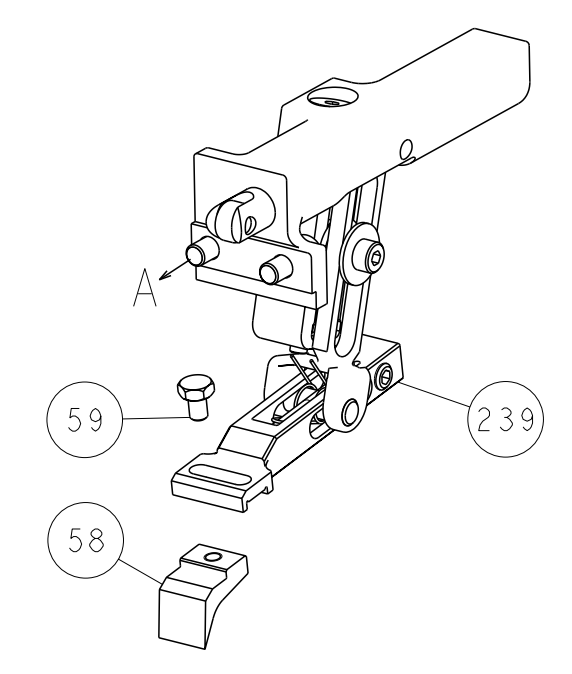
-	1	-	1	1	1	1-22279-3	SPRING, COMPRESSION	246
-	-	1	-	-	-	2119759-1	RAM, AMP STYLE, END FEED, NON-ADJUST	245
-	-	2	2	-	-	2168400-7	SHCS, LOW HEAD, RoHS, M5 X 10	240
-	-	-	-	-	1	2119580-1	MECHANICAL FEED ASSEMBLY	239
-	-	-	-	1	-	2063440-1	AIR FEED MODULE	238
-	-	1	1	-	-	2119740-2	TAG, IDENTIFICATION	213
-	1	1	1	1	1	1803008-3	FLOATING SHEAR HOLDER	206
-	2	2	2	2	2	1-2168083-1	SCR, SKT HD CAP, RoHS, M3 X 6	191
-	-	REFREF	-	-	-	1901697-1	FEED FINGER ASSEMBLY, EF	183
-	2	2	2	2	2	2-22280-0	SPRING, COMPRESSION	179
-	2	2	2	2	2	2079383-1	SCR, BHSC, RoHS (M3 X 8)	178
-	1	1	1	1	1	356885-1	STOP, SHEAR	177
-	-	-	-	2	-	21045-3	RING, RETAIN, EXTERN, 3/16 CRESCENT	172
-	1	1	1	1	1	994969-1	MAGNET, RARE EARTH HIGH ENERGY	166
-	REFREF	REFREF	REFREF	REFREF	REFREF	994970-2	COUNTER, MAGNETIC	164
-	-	-	-	1	-	240638-1	SPRING, FEED FINGER	163
-	-	-	-	1	-	3-23627-7	PIN, RETAIN, GRVD, 3/16 X .854	137
-	-	REFREF	-	-	-	SEE NOTE 4	MEMORY CHIP, PROGRAMMED	135
-	-	1	1	-	-	1633743-1	SERVO FEED LATCH ASM	133
-	2	2	2	2	2	1-18028-2	WASHER, FLAT, REG M4	119
¹³	-	1	1	1	1	2119955-2	ASSY, LUBRICATOR, END FEED	84
-	1	1	1	1	1	1-455888-9	SPACER, CRIMPER	82
-	1	1	1	1	1	1803203-2	BLOCK, FRONT DEPRESSOR	77
-	1	1	1	1	1	2119791-5	DEPRESSOR, WIRE	73
-	1	1	1	1	1	2119956-2	DOCUMENTATION PACKAGE	71
-	2	2	2	2	2	3-18032-3	SCR, SET, FLT PNT, M3 X 20.0	70
-	1	1	1	1	1	2119943-1	WASHER, SPACER	69
-	1	-	-	1	1	2119740-1	TAG, IDENTIFICATION	67
-	2	2	2	2	2	2168078-1	SCREW, DRIVE, RH, RoHS, 2 x .188	66
-	1	-	1	1	1	2119793-1	LIMITER, ADJUSTMENT BOLT	63
⁶	-	3	-	3	3	992763-5	SCR, SET, SOC, CONE PNT, M3 X 4.0	62
-	-	-	-	-	1	5-18022-5	SCR, HEX HD CAP, M4 X 6.0	59
-	-	-	-	-	1	2063961-1	FEED FINGER	58
-	4	4	4	4	4	2168400-4	SHCS, LOW HEAD, RoHS, M4 X 8	57
-	2	2	2	2	2	1-2168083-0	SCR, SKT HD CAP, RoHS, M4 X 10	56
-	2	2	2	2	2	5018030-1	NUT, HEX, REG, RoHS, M3	54
-	2	2	2	2	2	986965-8	NUT, LOCK, HEX, TORQUE (M4)	53
-	-	-	-	1	-	2119792-2	PAWL, EF, AIR	51
-	-	-	-	1	2	18023-9	SCR, SKT HD CAP M4 X 6.0	49
-	-	-	-	-	1	2119652-1	FEED CAM, PRE FEED	48
-	-	-	-	-	1	2119653-1	FEED CAM, POST FEED	47
-	1	1	1	1	1	2119655-5	APPLICATOR BASIC ASSEMBLY, EF	46
-	1	-	1	1	1	2119369-1	RAM, AMP STYLE, END FEED	44
-	1	1	1	1	1	2079383-7	SCR, BHSC, RoHS (M8 X 25)	41
-	1	-	1	1	1	2119645-1	DISC, NUMBERED FA WIRE ADJUSTMENT	40
-	1	-	1	1	1	2119957-1	APPLICATOR SHIM PACK	39
-	1	1	1	1	1	1-2119644-4	RAM WASHER, PRECISION	38
⁶	-	1	1	1	1	2119085-1	FA HEAD, ATLANTIC STYLE	37
-	1	-	1	1	1	2119092-1	BOLT, ADJUSTMENT	35
-	8	8	8	8	8	1-18028-2	WASHER, FLAT, REG M4	33
-	2	2	2	2	2	2168083-3	SCR, SKT HD CAP, RoHS, M4 X 12.0	31
-	2	2	2	2	2	2168083-2	SCR, SKT HD CAP, RoHS, M4 X 8.0	29
-	1	1	1	1	1	468281-6	STRIPPER	27
-	2	2	2	2	2	1-2168083-6	SCR, SKT HD CAP, RoHS, M4 X 35	25
-	1	1	1	1	1	1803162-1	PLATE, STRIP GUIDE	24
-	2	2	2	2	2	2-22281-3	SPRING, COMPRESSION	22
-	1	1	1	1	1	1633168-1	ARM, STOCK DRAG	21
-	1	1	1	1	1	464452-4	DRAG, STOCK	20
-	2	2	2	2	2	1901259-3	GUIDE, LOWER STRIP	18
-	4	4	4	4	4	1-2079383-1	SCR, BHSC, RoHS (M6 X 12)	17
-	1	1	1	1	1	1-2168083-3	SCR, SKT HD CAP, RoHS, M3 X 16	16
-	1	1	1	1	1	5018030-1	NUT, HEX, REG, RoHS, M3	15
-	-	-	-	-	-	-	-	11
-	-	-	-	-	-	-	-	10
-	-	-	-	-	-	-	-	9
¹	1	1	1	1	1	7-690618-5	ANVIL, SPLICE TYPE	8
¹	-	1	1	1	1	1803009-1	SHEAR BLADE	7
-	-	-	-	-	-	-	-	6
-	1	1	1	1	1	690753-6	SPACER, TONKER	5
-	-	-	-	-	-	-	-	4
-	-	-	-	-	-	-	-	3
-	1	1	1	1	1	1-455888-4	SPACER, CRIMPER	2
¹	1	1	1	1	1	1633723-7	CRIMPER, WIRE O	1

DIMENSIONS:	TOLERANCES UNLESS OTHERWISE SPECIFIED:	OWN	DATE	NAME
mm	0 PLC ± 1 PLC ± 2 PLC ± 3 PLC ± 4 PLC ± ANGLES ±	B. WEAVER	05SEP2017	TE Connectivity Harrisburg, PA 17105-3608
		C. TOPPER	05SEP2017	
		APVD		
		C. TOPPER		
		PRODUCT SPEC		
		APPLICATION SPEC		
MATERIAL		WEIGHT	SCALE	RESTRICTED TO
			1:1	
		Customer Accessible Production Drawing	SHEET 1 OF 4	REV A

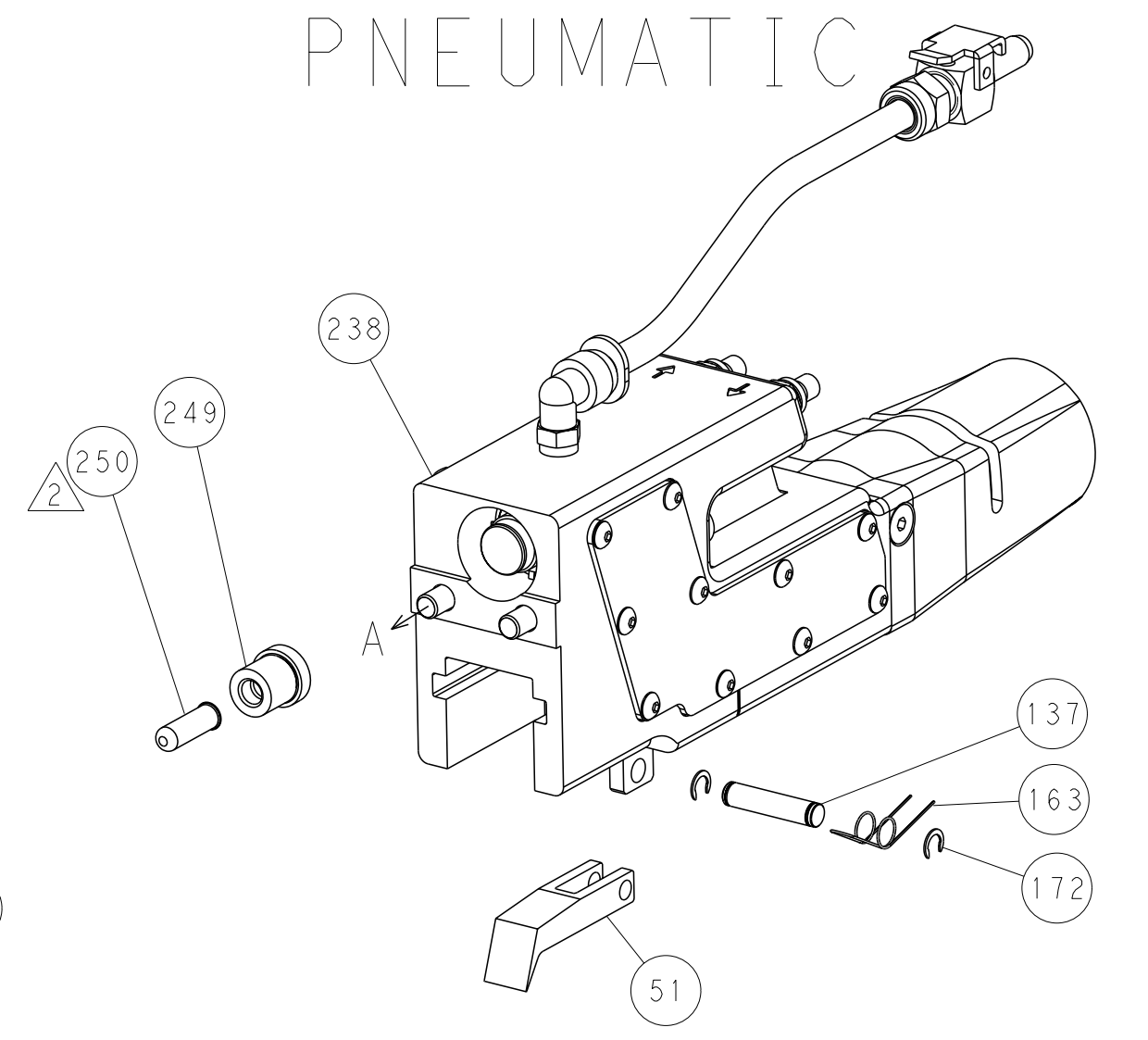
LOC	DIST	REVISIONS					
A	66	P	LYR	DESCRIPTION	DATE	OWN	APVD
		-		SEE SHEET 1			



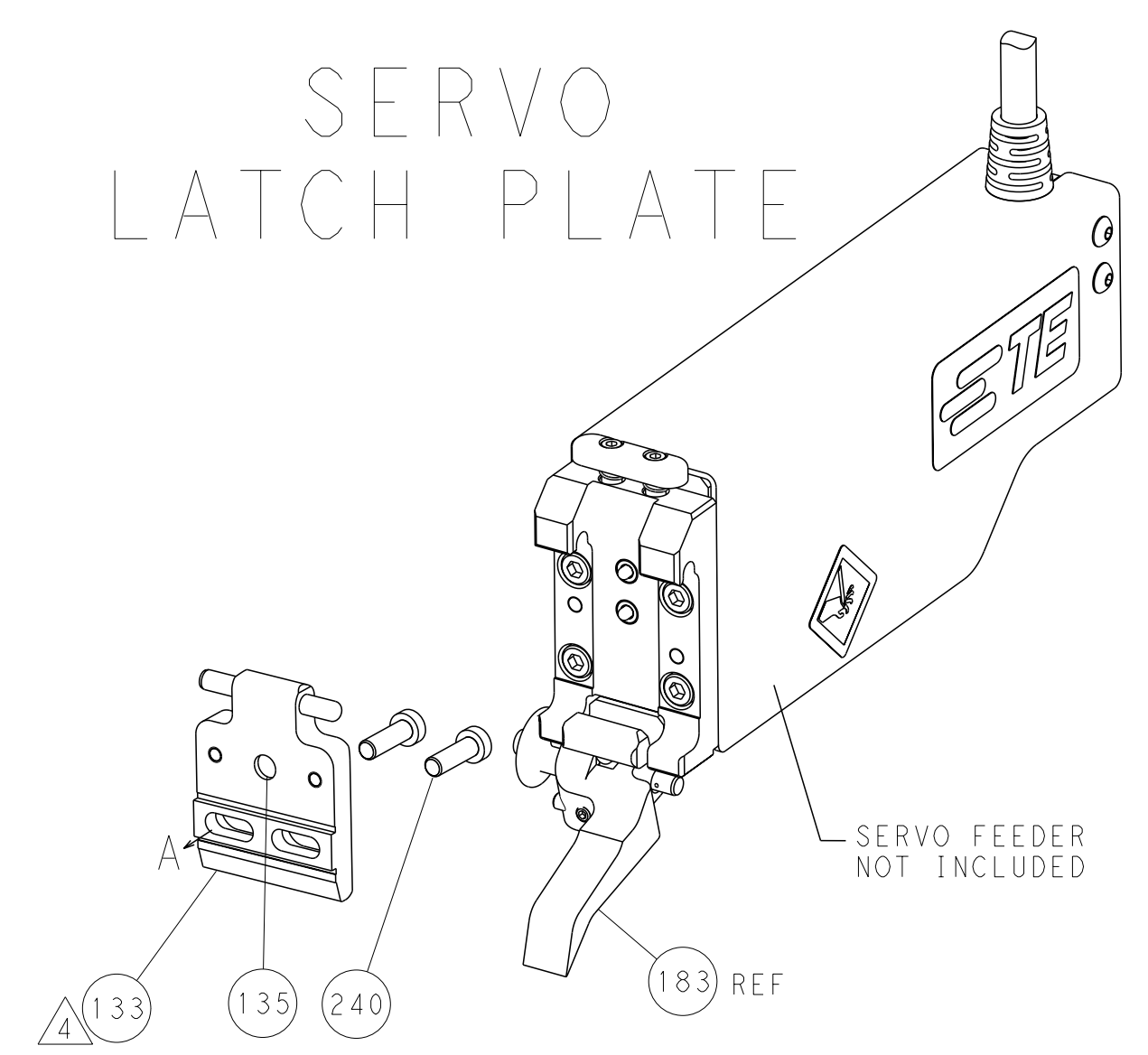
FEED TYPE MECHANICAL



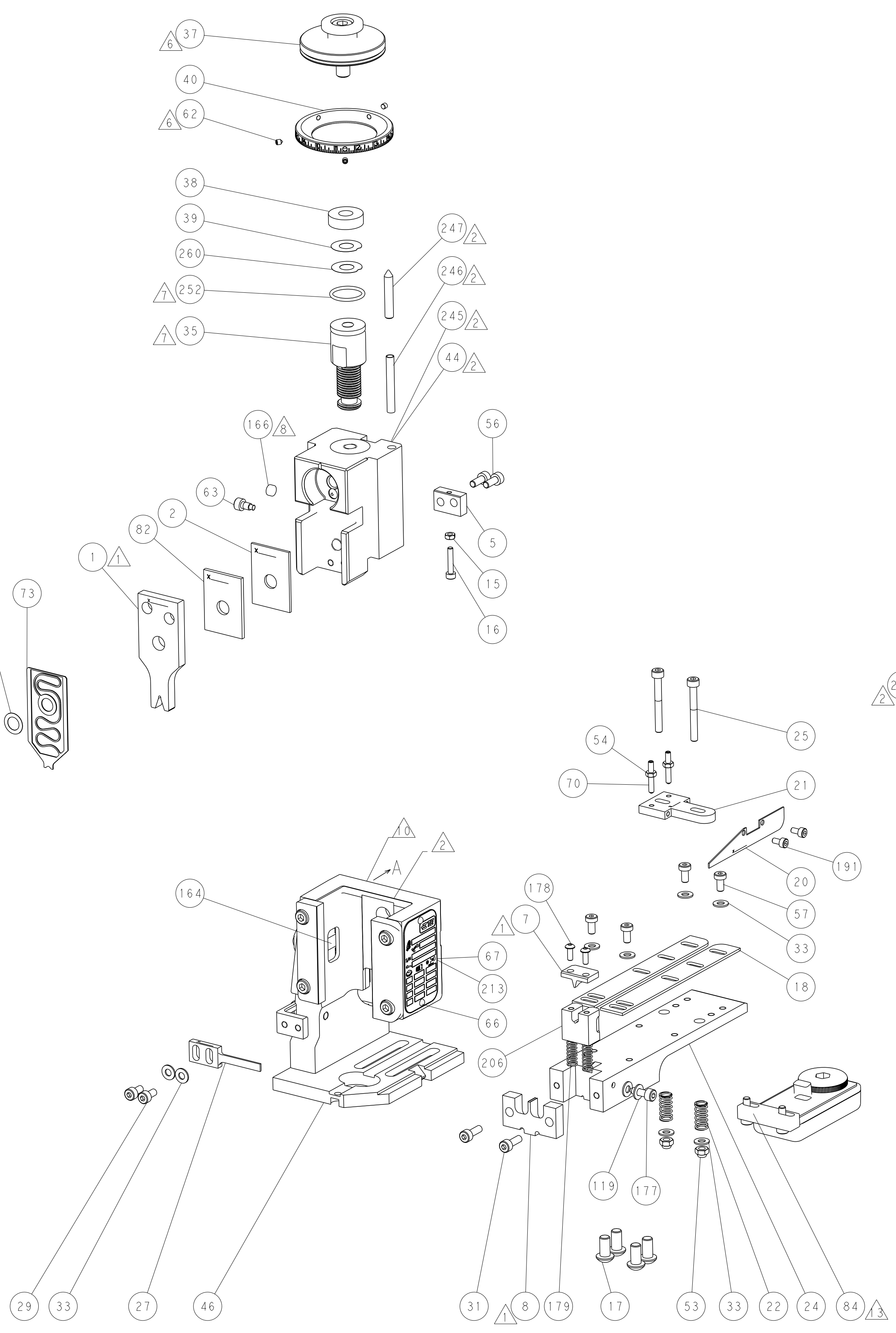
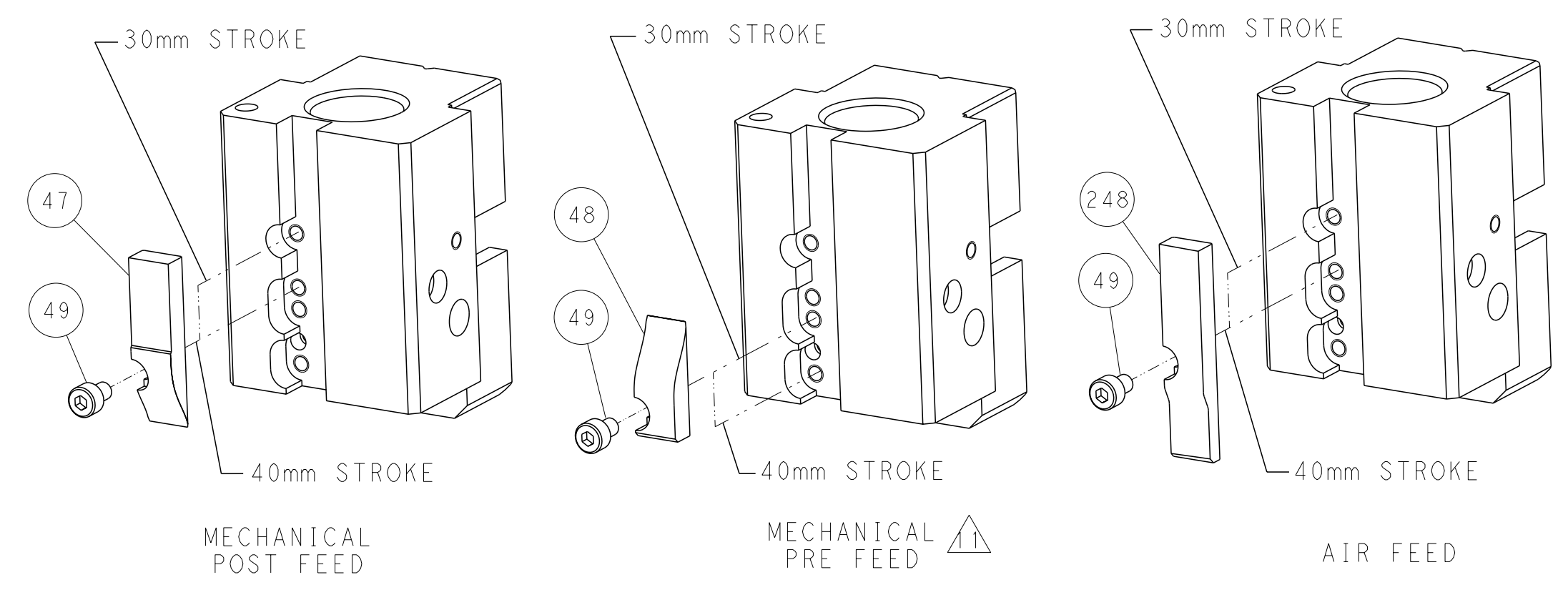
PNEUMATIC



SERVO LATCH PLATE



CAM POSITIONS



ATLANTIC VERSION
 Shown on sheets 1 of 4 & 2 of 4
 (Pacific version shown on sheets 3 of 4 & 4 of 4)

DIMENSIONS: mm 		TOLERANCES UNLESS OTHERWISE SPECIFIED: 0 PLC ± 1 PLC ± 2 PLC ± 3 PLC ± 4 PLC ± ANGLES ± FINISH ±		OWN: B. WEAVER 05SEP2017 CHK: C. TOPPER 05SEP2017 APVD: C. TOPPER 05SEP2017 PRODUCT SPEC APPLICATION SPEC WEIGHT Customer Accessible Production Drawing		NAME: Ocean End Feed Applicator SIZE: A1 CAGE CODE: 00779 DRAWING NO: ©=2150836 SCALE: 1:1 SHEET: 2 of 4 REV: A		RESTRICTED TO:	
THE DRAWING IS A CONTROLLED DOCUMENT FOR TYCO ELECTRONICS CORPORATION. IT IS SUBJECT TO CHANGE AND TO CONTROL AND INSISTING DISCRETION SHOULD BE CONTACTED FOR THE LATEST REVISION.				TE Connectivity Harrisburg, PA 17105-3608		SHEETS 3 & 4 ARE NOT REQUIRED FOR ATLANTIC VERSION			

PACIFIC VERSION TERMINATOR INTERFACE ADAPTER	PART NUMBER	REVISION	DESCRIPTION	FEED TYPE	APPLICATOR STYLE CONVERSION CHART						
					CONVERT TO	PART NUMBERS REQUIRED					
	2-2150836-1	A	FINE CRIMP HEIGHT ADJUST	MECHANICAL	PNEUMATIC FEED	2119950-1	2119792-2	-	2119641-2	-	2063440-1
					SERVO LATCH PLATE	2119951-1	1901697-1	8-2150836-5	-	-	2168400-7 (QUANTITY 2)
					SMART APPLICATOR	2161326-1	-	8-2150836-4	-	-	-
	2-2150836-2	A	FINE CRIMP HEIGHT ADJUST	PNEUMATIC	MECHANICAL FEED	2119949-1	2063961-1	5-18022-5	2119653-2	-	-
					SERVO LATCH PLATE	2119951-1	1901697-1	8-2150836-5	-	-	2168400-7 (QUANTITY 2)
					SMART APPLICATOR	2161326-1	-	8-2150836-4	-	-	-
	2-2150836-5	A	FINE CRIMP HEIGHT ADJUST	SERVO LATCH PLATE	MECHANICAL FEED	2119949-1	2063961-1	5-18022-5	2119653-2	-	-
					PNEUMATIC FEED	2119950-1	2119792-2	-	2119641-2	-	2063440-1
	2-2150836-7	A	FINE CRIMP HEIGHT ADJUST	NONE	-	-	-	-	-	-	-
	7-2150836-7	A	CRIMP TOOLING KIT	-	-	-	-	-	-	-	-

APPLICATOR DATA		
CRIMP SIZE	WIRE	TYPE
1.65 mm [.065]	Ø	
APPL INSTRUCTIONS 408-10390		

TERMINAL DATA: STOCKO TERMINAL STOCKO CRIMP SPECIFICATION			
TERMINAL NAME: END FEED CLAW TYPE TERMINAL			
WIRE STRIP LENGTH		INSULATION DIAMETER RANGE	
6.58-7.34 mm [.259-.289 IN]			
TERMINAL APPLICATION SPECIFICATION	RSB 7849 V-1 Rev 13/10/2005		
TERMINALS APPLIED			
TE TERMINAL	STOCKO TERMINAL	TE TERMINAL	STOCKO TERMINAL
2113161-1	RSB 7849 V-1		

WIRE SIZE	CRIMP HEIGHT mm [INCH]	CRIMP HEIGHT REFERENCE SETTING
1.00mm2	1.48 +/- 0.02 [.058 +/- .001]	5.9
18 AWG	1.36 +/- 0.02 [.054 +/- .001]	7.3
0.75mm2	1.32 +/- 0.02 [.052 +/- .001]	7.7
0.50mm2	1.20 +/- 0.02 [.047 +/- .001]	9.4

- RECOMMENDED SPARE PARTS
- GREASE BEARING SURFACES LIGHTLY
- 3. LUBRICATE DAILY PER THE APPLICATOR INSTRUCTION SHEET SUPPLIED WITH THE APPLICATOR.
- APPLICATOR SPECIFIC DATA TO BE ENTERED INTO BLANK MEMORY CHIP AT ASSEMBLY. SEE BELOW FOR PART NUMBER:
 MECHANICAL FEED WITH "SMART APPLICATOR" CONVERSION: 8-2150836-4
 PNEUMATIC FEED WITH "SMART APPLICATOR" CONVERSION: 8-2150836-4
 SERVO FEED WITH "FINE CRIMP HEIGHT ADJUST": 8-2150836-5
- 5. ADJUSTMENT OF THE STRIPPER MAY BE REQUIRED WHEN MOVING THE APPLICATOR BETWEEN BENCH AND LEADMAKER APPLICATIONS.
- APPLY PART NUMBER 1-23419-5 LOCTITE TO THREADS OF ITEMS 62.
- GREASE THREADS, GROOVE AND O-RING ON ITEMS 139 & 153.
- MAGNET, ITEM 166 MUST BE ORIENTED CORRECTLY IN ORDER TO PROPERLY ACTUATE THE COUNTER.
- CRIMP HEIGHT REFERENCE SETTING WAS THE SETTING USED WHEN THE APPLICATOR WAS QUALIFIED AT THE FACTORY. ADJUSTMENT MAY BE NECESSARY WHEN RUNNING APPLICATOR IN THE FIELD.
- SPARE FEED CAM STORAGE LOCATION REFER TO INSTRUCTION SHEET FOR ADDITIONAL INFORMATION.
- THE RECOMMENDED SET-UP FOR END FEED APPLICATORS IS POST-FEED WITH ITEM 2119653-1. THE APPLICATOR CAN BE CONFIGURED FOR PRE-FEED WITH ITEM 2119652-1 BUT MAY ENCOUNTER PROBLEMS WITH SOME APPLICATIONS. FEED ISSUES OR TERMINAL JAMMING MAY OCCUR IN THE PRE-FEED CONFIGURATION.
- TERMINAL LUBRICANT IS RECOMMENDED.

***WARNING**
 ON INSTALLATION, SET WIRE DISC, ITEM 40 TO LARGEST WIRE SIZE SETTING. USE OF SETTINGS BELOW MINIMUM REQUIRED CRIMP HEIGHT SETTING WILL CAUSE DAMAGE TO CRIMP TOOLING.

	ITEM NO	DESCRIPTION	ITEM NO
- 1 1 1 1 1	2119782-1	FINE ADJUST HEAD ASM, PACIFIC STYLE	251
- - - 1 -	2119640-1	PUSH ROD, AIR FEED	250
- - - 1 -	1803259-1	BUSHING, FLANGED	249
- 1 1 1 1 1	1-22279-3	SPRING, COMPRESSION	246
-77-27-25-22-21	PART NO	DESCRIPTION	ITEM NO

PACIFIC VERSION
 Shown on sheets 3 of 4 & 4 of 4
 (Atlantic version shown on sheets 1 of 4 & 2 of 4)

SET UP GAUGE	LOC	DIST	REVISIONS			
2119599-2	A	66	REV	DATE	OWN	APVD
			-	SEE SHEET 1	-	-

- - 2 - -	2168400-7	SHCS, LOW HEAD, RoHS, M5 X 10	240	
- - - - 1	2119580-1	MECHANICAL FEED ASSEMBLY	239	
- - - 1 -	2063440-1	AIR FEED MODULE	238	
- - 1 - -	2119740-2	TAG, IDENTIFICATION	213	
- 1 1 1 1	1803008-3	FLOATING SHEAR HOLDER	206	
- 2 2 2 2	1-2168083-1	SCR, SKT HD CAP, RoHS, M3 X 6	191	
- 4 4 4 4	2079383-9	SCR, BHSC, RoHS (M6 X 20)	186	
- - REF - -	1901697-1	FEED FINGER ASSEMBLY, EF	183	
- 2 2 2 2	2-22280-0	SPRING, COMPRESSION	179	
- 2 2 2 2	2079383-3	SCR, BHSC, RoHS (M3 X 8)	178	
- 1 1 1 1	356885-1	STOP, SHEAR	177	
- - - 2 -	21045-3	RING, RETAIN, EXTERN, 3/16 CRESCENT	172	
- 1 1 1 1	994969-1	MAGNET, RARE EARTH HIGH ENERGY	166	
- REFREFREFREF	994970-2	COUNTER, MAGNETIC	164	
- - - 1 -	240638-1	SPRING, FEED FINGER	163	
- 1 1 1 1	8-21084-1	O-RING, .801 ID, .070 DIA. MAT.	153	
- - - 1 -	2119641-2	FEED CAM, AIR FEED	152	
- 1 1 1 1	2119798-2	DETENT PIN	145	
- - - - 1	2119653-2	FEED CAM, POST FEED	142	
- 1 1 1 1	2119656-6	APPLICATOR BASIC ASSEMBLY, EF	141	
- 1 1 1 1	2119651-1	RAM, ASIAN STYLE, END FEED	140	
- 1 1 1 1	2119092-2	BOLT, ADJUSTMENT	139	
- - - 1 -	3-23627-7	PIN, RETAIN, GRVD, 3/16 X .854	137	
- - REF - -	SEE NOTE 4	MEMORY CHIP, PROGRAMMED	135	
- - 1 - -	1633743-1	SERVO FEED LATCH ASM	133	
- 2 2 2 2	1-18028-2	WASHER, FLAT, REG M4	119	
- 1 1 1 1	2119955-2	ASSY, LUBRICATOR, END FEED	84	
- 1 1 1 1	1-455888-9	SPACER, CRIMPER	82	
- 1 1 1 1	1803203-2	BLOCK, FRONT DEPRESSOR	77	
- 1 1 1 1	2119791-5	DEPRESSOR, WIRE	73	
- 1 1 1 1	2119956-2	DOCUMENTATION PACKAGE	71	
- 2 2 2 2	3-18032-3	SCR, SET, FLT PNT, M3 X 20.0	70	
- 1 1 1 1	2119943-1	WASHER, SPACER	69	
- 1 - 1 1	2119740-1	TAG, IDENTIFICATION	67	
- 2 2 2 2	2168078-1	SCREW, DRIVE, RH, RoHS, 2 x .188	66	
- 1 1 1 1	2119793-1	LIMITER, ADJUSTMENT BOLT	63	
- 3 3 3 3	992763-5	SCR, SET, SOC, CONE PNT, M3 x 4.0	62	
- - - - 1	5-18022-5	SCR, HEX HD CAP, M4 X 6.0	59	
- - - - 1	2063961-1	FEED FINGER	58	
- 4 4 4 4	2168400-4	SHCS, LOW HEAD, RoHS, M4 X 8	57	
- 2 2 2 2	1-2168083-0	SCR, SKT HD CAP, RoHS, M4 X 10	56	
- 2 2 2 2	5018030-1	NUT, HEX, REG, RoHS, M3	54	
- 2 2 2 2	986965-8	NUT, LOCK, HEX, TORQUE (M4)	53	
- - - 1 -	2119792-2	PAWL, EF, AIR	51	
- - - 1 2	18023-9	SCR, SKT HD CAP M4 X 6.0	49	
- - - - 1	2119652-1	FEED CAM, PRE FEED	48	
- 1 1 1 1	2079383-7	SCR, BHSC, RoHS (M8 X 25)	41	
- 1 1 1 1	2119645-1	DISC, NUMBERED FA WIRE ADJUSTMENT	40	
- 1 1 1 1	2119957-1	APPLICATOR SHIM PACK	39	
- 1 1 1 1	1-2119644-4	RAM WASHER, PRECISION	38	
- 8 8 8 8	1-18028-2	WASHER, FLAT, REG M4	33	
- 2 2 2 2	2168083-3	SCR, SKT HD CAP, RoHS, M4 X 12.0	31	
- 2 2 2 2	2168083-2	SCR, SKT HD CAP, RoHS, M4 X 8.0	29	
- 1 1 1 1	468281-6	STRIPPER	27	
- 2 2 2 2	1-2168083-6	SCR, SKT HD CAP, RoHS, M4 X 35	25	
- 1 1 1 1	1803162-1	PLATE, STRIP GUIDE	24	
- 2 2 2 2	2-22281-3	SPRING, COMPRESSION	22	
- 1 1 1 1	1633168-1	ARM, STOCK DRAG	21	
- 1 1 1 1	464452-4	DRAG, STOCK	20	
- 2 2 2 2	1901259-3	GUIDE, LOWER STRIP	18	
- 1 1 1 1	1-2168083-3	SCR, SKT HD CAP, RoHS, M3 X 16	16	
- 1 1 1 1	5018030-1	NUT, HEX, REG, RoHS, M3	15	
- - - - -	-	-	11	
- - - - -	-	-	10	
- - - - -	-	-	9	
	1 1 1 1 1	7-690618-5	ANVIL, SPLICE TYPE	8
	- 1 1 1 1	1803009-1	SHEAR BLADE	7
- - - - -	-	-	6	
- 1 1 1 1	690753-6	SPACER, TONKER	5	
- - - - -	-	-	4	
- - - - -	-	-	3	
- 1 1 1 1	1-455888-4	SPACER, CRIMPER	2	
	1 1 1 1 1	1633723-7	CRIMPER, WIRE O	1
-77-27-25-22-21	PART NO	DESCRIPTION	ITEM NO	

DIMENSIONS: mm		TOLERANCES UNLESS OTHERWISE SPECIFIED:		OWN: B. WEAVER 05SEP2017	DATE: 05SEP2017
		0 PLC ±	1 PLC ±	APVD: C. TOPPER 05SEP2017	NAME: Ocean End Feed Applicator
		2 PLC ±	3 PLC ±	PRODUCT SPEC	SIZE: A1
		4 PLC ±	ANGLES FINISH	APPLICATION SPEC	CAGE CODE: 00779
MATERIAL:		WEIGHT:	SCALE: 1:1	DRAWING NO: 2150836	SHEET 3 OF 4
				Customer Accessible Production Drawing	REV: A

