

ATLANTIC VERSION TERMINATOR INTERFACE ADAPTER	PART NUMBER	REVISION	DESCRIPTION	FEED TYPE	APPLICATOR STYLE CONVERSION CHART						
					CONVERT TO	PART NUMBERS REQUIRED					
	2150612-1	A	FINE CRIMP HEIGHT ADJUST	MECHANICAL	PNEUMATIC FEED	2119950-1	2119792-2	-	2119641-1	-	2063440-1
					SERVO LATCH PLATE	2119951-1	1901697-1	8-2150612-5	-	-	2168400-7 (QUANTITY 2)
					SMART APPLICATOR	2161326-1	-	8-2150612-4	-	-	-
	2150612-2	A	FINE CRIMP HEIGHT ADJUST	PNEUMATIC	MECHANICAL FEED	2119949-1	2063961-1	5-18022-5	2119653-1	-	-
					SERVO LATCH PLATE	2119951-1	1901697-1	8-2150612-5	-	-	2168400-7 (QUANTITY 2)
					SMART APPLICATOR	2161326-1	-	8-2150612-4	-	-	-
	2150612-5	A	FINE CRIMP HEIGHT ADJUST	SERVO LATCH PLATE <sup>4</sup>	MECHANICAL FEED	2119949-1	2063961-1	5-18022-5	2119653-1	-	-
					PNEUMATIC FEED	2119950-1	2119792-2	-	2119641-1	-	2063440-1
	2150612-6	A	NON-CRIMP HEIGHT ADJUST	SERVO LATCH PLATE <sup>4</sup>	-	-	-	-	-	-	-
					-	-	-	-	-	-	-
	2150612-7	A	FINE CRIMP HEIGHT ADJUST	NONE	-	-	-	-	-	-	-
	7-2150612-7	A	CRIMP TOOLING KIT	-	-	-	-	-	-	-	-

APPLICATOR DATA		
CRIMP	SIZE	TYPE
WIRE	2.29 mm [.090]	F
INSUL	3.38 mm [.133]	F
APPL INSTRUCTIONS 408-10390		

TERMINAL DATA: ESCUBEDO TERMINAL ESCUBEDO CRIMP SPECIFICATION			
TERMINAL NAME: AMP MCP 2.8K FLAT TYPE RECEPTACLE			
WIRE STRIP LENGTH		INSULATION DIAMETER RANGE	
4.50-5.50 mm [.177-.217 IN]		Ø1.88-2.50 mm [.074-.098 IN]	
TERMINAL APPLICATION SPECIFICATION	4333.00 Rev 4	-	-
TERMINALS APPLIED			
TE TERMINAL	ESCUBEDO TERMINAL	TE TERMINAL	ESCUBEDO TERMINAL
2113836-1	4333.00	2113836-2	4333.02
2113836-3	4333.30	2113836-4	4333.32

WIRE SIZE	CRIMP HEIGHT mm [INCH]	CRIMP HEIGHT REFERENCE SETTING
1.00mm2	1.54+/-0.05 [.061+/-0.002]	4.5
0.75mm2	1.44+/-0.05 [.057+/-0.002]	5.6
0.50mm2	1.34+/-0.05 [.053+/-0.002]	6.5

- <sup>1</sup> RECOMMENDED SPARE PARTS
- <sup>2</sup> GREASE BEARING SURFACES LIGHTLY
- 3. LUBRICATE DAILY PER THE APPLICATOR INSTRUCTION SHEET SUPPLIED WITH THE APPLICATOR.
- <sup>4</sup> APPLICATOR SPECIFIC DATA TO BE ENTERED INTO BLANK MEMORY CHIP AT ASSEMBLY. SEE BELOW FOR PART NUMBER:  
 MECHANICAL FEED WITH "SMART APPLICATOR" CONVERSION: 8-2150612-4  
 PNEUMATIC FEED WITH "SMART APPLICATOR" CONVERSION: 8-2150612-4  
 SERVO FEED WITH "FINE CRIMP HEIGHT ADJUST": 8-2150612-5  
 SERVO FEED WITH "NON-CRIMP HEIGHT ADJUST": 8-2150612-6
- 5. ADJUSTMENT OF THE STRIPPER MAY BE REQUIRED WHEN MOVING THE APPLICATOR BETWEEN BENCH AND LEADMAKER APPLICATIONS.
- <sup>6</sup> APPLY PART NUMBER 1-23419-5 LOCTITE TO THREADS OF ITEMS 62 & 180. APPLY PART NUMBER 2-23419-6 LOCTITE TO THREADS OF ITEM 242. FOR -6 ONLY APPLY PART NUMBER 1-23419-5 LOCTITE TO THREADS OF ITEMS 37 & 180.
- <sup>7</sup> GREASE THREADS, GROOVE AND O-RING ON ITEMS 35 & 252.
- <sup>8</sup> MAGNET, ITEM 166 MUST BE ORIENTED CORRECTLY IN ORDER TO PROPERLY ACTUATE THE COUNTER.
- <sup>9</sup> CRIMP HEIGHT REFERENCE SETTING WAS THE SETTING USED WHEN THE APPLICATOR WAS QUALIFIED AT THE FACTORY. ADJUSTMENT MAY BE NECESSARY WHEN RUNNING APPLICATOR IN THE FIELD.
- <sup>10</sup> SPARE FEED CAM STORAGE LOCATION REFER TO INSTRUCTION SHEET FOR ADDITIONAL INFORMATION.
- <sup>11</sup> THE RECOMMENDED SET-UP FOR END FEED APPLICATORS IS POST-FEED WITH ITEM 2119653-1. THE APPLICATOR CAN BE CONFIGURED FOR PRE-FEED WITH ITEM 2119652-1 BUT MAY ENCOUNTER PROBLEMS WITH SOME APPLICATIONS. FEED ISSUES OR TERMINAL JAMMING MAY OCCUR IN THE PRE-FEED CONFIGURATION.
- <sup>12</sup> WHEN ASSEMBLING -6 NON-CRIMP HEIGHT ADJUST APPLICATOR USE SHIM PACK 2119957-2 TO ALIGN APPLICATOR'S MAXIMUM WIRE CRIMP HEIGHT AT NORMAL TERMINATOR SHUT HEIGHT

**\*WARNING**  
 ON INSTALLATION, SET WIRE DISC, ITEM 40 TO LARGEST WIRE SIZE SETTING. USE OF SETTINGS BELOW MINIMUM REQUIRED CRIMP HEIGHT SETTING WILL CAUSE DAMAGE TO CRIMP TOOLING.

-	-	1	-	-	-	2119957-2	APPLICATOR SHIM PACK	260
-	1	-	1	1	1	8-21084-0	O-RING, .676 ID, .070 DIA. MAT.	252
-	-	-	-	1	-	2119640-1	PUSH ROD, AIR FEED	250
-	-	-	-	1	-	2079988-1	BUSHING, LCH5-12, MISUMI	249
-	-	-	-	1	-	2119641-1	FEED CAM, AIR FEED	248
-	1	-	1	1	1	2119798-1	DETENT PIN	247
-	1	-	1	1	1	1-22279-3	SPRING, COMPRESSION	246
-	-	1	-	-	-	2119759-1	RAM, AMP STYLE, END FEED, NON-ADJUST	245
-77	-7	-6	-5	-2	-1	PART NO	DESCRIPTION	ITEM NO

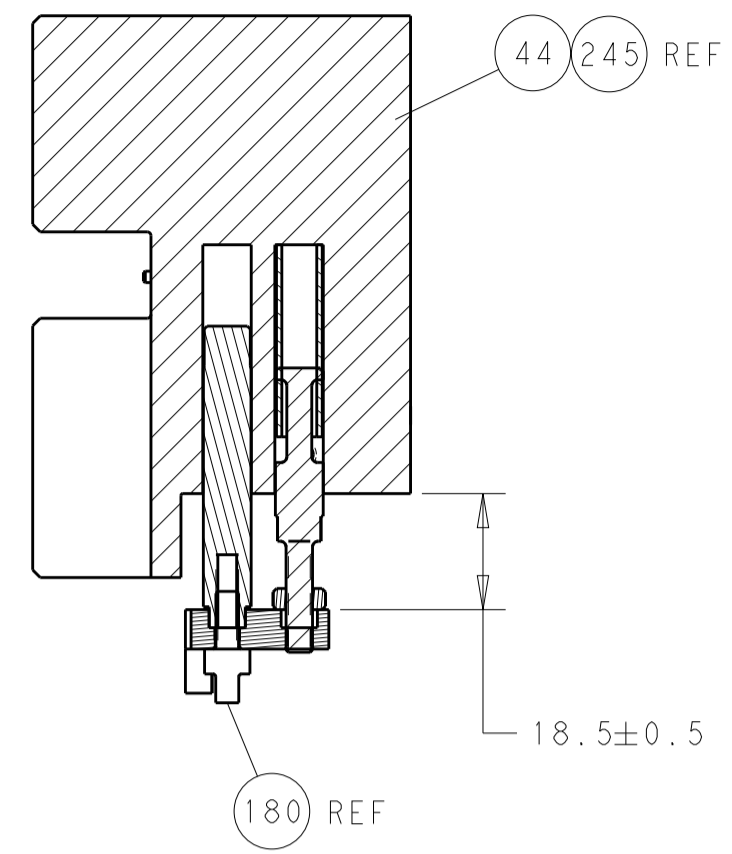
**ATLANTIC VERSION**  
 Shown on sheets 1 of 4 & 2 of 4  
 (Pacific version shown on sheets 3 of 4 & 4 of 4)

SET UP GAUGE	LOC	DIST	REVISIONS			
2119599-2	A	66	REV	DATE	BY	APPD
			A	RELEASE		22SEP2015 XZ GB

-	1	1	1	1	1	2119082-4	CAM, SNAIL, INSULATION ADJUSTMENT	244
-	1	1	1	1	1	2079764-1	WASHER, WAVE SPRING, CREST-TO-CREST	243
-	1	1	1	1	1	2119083-1	RETAINER, INSULATION DIAL	242
-	-	2	2	-	-	2168400-7	SHCS, LOW HEAD, RoHS, M5 X 10	240
-	-	-	-	-	1	2119580-1	MECHANICAL FEED ASSEMBLY	239
-	-	-	-	1	-	2063440-1	AIR FEED MODULE	238
-	-	1	1	-	-	2119740-2	TAG, IDENTIFICATION	213
-	-	REF	REF	-	-	1901697-1	FEED FINGER ASSEMBLY, EF	183
-	1	1	1	1	1	1-1976055-3	STANDOFF, HOLD-DOWN	180
-	1	1	1	1	1	6-993111-6	PIN, SLOTTED SPRING 3.0 X 14.0	177
-	1	1	1	1	1	8-22280-7	SPRING, COMPRESSION	176
-	1	1	1	1	1	1752353-2	GUIDE PIN, HOLDDOWN	175
-	1	1	1	1	1	1901680-2	GUIDE PIN, HOLDDOWN	174
-	-	-	-	2	-	21045-3	RING, RETAIN, EXTERN, 3/16 CRESCENT	172
-	1	1	1	1	1	994969-1	MAGNET, RARE EARTH HIGH ENERGY	166
-	REF	REF	REF	REF	REF	994970-2	COUNTER, MAGNETIC	164
-	-	-	-	1	-	240638-1	SPRING, FEED FINGER	163
-	-	-	-	1	-	3-23627-7	PIN, RETAIN, GRVD, 3/16 X .854	137
-	-	REF	REF	-	-	SEE NOTE 4	MEMORY CHIP, PROGRAMMED	135
-	-	1	1	-	-	1633743-1	SERVO FEED LATCH ASM	133
-	1	1	1	1	1	2119955-2	ASSY, LUBRICATOR, END FEED	84
-	1	1	1	1	1	455888-4	SPACER, CRIMPER	82
-	1	1	1	1	1	2119956-2	DOCUMENTATION PACKAGE	71
-	2	2	2	2	2	2-18032-2	SCR, SET, FLT POINT M3 X 10.0	70
-	1	-	-	1	1	2119740-1	TAG, IDENTIFICATION	67
-	2	2	2	2	2	2168078-1	SCREW, DRIVE, RH, RoHS, 2 x .188	66
-	1	1	1	1	1	1901681-1	HOLDDOWN, TERMINAL	65
-	1	-	1	1	1	2119793-1	LIMITER, ADJUSTMENT BOLT	63
-	3	-	3	3	3	992763-5	SCR, SET, SOC, CONE POINT, M3 X 4.0	62
-	1	1	1	1	1	2079383-4	SCR, BHSC, RoHS (M4 X 8)	60
-	-	-	-	-	1	5-18022-5	SCR, HEX HD CAP, M4 X 6.0	59
-	-	-	-	-	1	2063961-1	FEED FINGER	58
-	4	4	4	4	4	2168400-4	SHCS, LOW HEAD, RoHS, M4 X 8	57
-	2	2	2	2	2	1-2168083-0	SCR, SKT HD CAP, RoHS, M4 X 10	56
-	2	2	2	2	2	5018030-2	NUT, HEX, REG, RoHS, M4	55
-	2	2	2	2	2	5018030-1	NUT, HEX, REG, RoHS, M3	54
-	2	2	2	2	2	986965-8	NUT, LOCK, HEX, TORQUE (M4)	53
-	1	1	1	1	1	1-5018030-0	NUT, HEX, REG, RoHS, M3.5	52
-	-	-	-	1	-	2119792-2	PAWL, EF, AIR	51
-	-	-	-	1	2	18023-9	SCR, SKT HD CAP M4 X 6.0	49
-	-	-	-	-	1	2119652-1	FEED CAM, PRE FEED	48
-	-	-	-	-	1	2119653-1	FEED CAM, POST FEED	47
-	1	1	1	1	1	2119655-5	APPLICATOR BASIC ASSEMBLY, EF	46
-	1	-	1	1	1	2119369-1	RAM, AMP STYLE, END FEED	44
-	1	1	1	1	1	2079383-7	SCR, BHSC, RoHS (M8 X 25)	41
-	1	-	1	1	1	2119645-1	DISC, NUMBERED FA WIRE ADJUSTMENT	40
-	1	-	1	1	1	2119957-1	APPLICATOR SHIM PACK	39
-	1	1	1	1	1	1-2119644-2	RAM WASHER, PRECISION	38
-	1	1	1	1	1	2119085-1	FA HEAD, ATLANTIC STYLE	37
-	1	-	1	1	1	2119092-1	BOLT, ADJUSTMENT	35
-	8	8	8	8	8	1-18028-2	WASHER, FLAT, REG M4	33
-	2	2	2	2	2	2168083-9	SCR, SKT HD CAP, RoHS, M4 X 20	31
-	2	2	2	2	2	1-2168083-0	SCR, SKT HD CAP, RoHS, M4 X 10	29
-	1	1	1	1	1	240639-1	STRIPPER (MACHINING)	27
-	2	2	2	2	2	1320906-1	STUD, THREADED	25
-	1	1	1	1	1	1752371-3	PLATE, STRIP GUIDE	24
-	2	2	2	2	2	2-22281-3	SPRING, COMPRESSION	22
-	1	1	1	1	1	1752373-4	DRAG	20
-	1	1	1	1	1	1803152-4	STRIP GUIDE, REAR	19
-	1	1	1	1	1	1803151-4	STRIP GUIDE, FRONT	18
-	4	4	4	4	4	1-2079383-1	SCR, BHSC, RoHS (M6 X 12)	17
-	1	1	1	1	1	1752360-1	SPACER, HOLD-DOWN	13
-	1	1	1	1	1	240833-4	PLATE, REAR SHEAR	11
-	-	-	-	-	-	-	-	10
-	1	1	1	1	1	690482-3	PLATE, FRONT SHEAR	9
-	1	1	1	1	1	2-1803060-8	ANVIL, COMBINATION, END FEED	8
-	1	1	1	1	1	1-2217206-3	BLADE, SLUG	7
-	-	-	-	-	-	-	-	6
-	1	1	1	1	1	1-240641-8	SPACER	5
-	1	1	1	1	1	1-238009-1	BLOCK, FL CRIMPER SPACER	4
-	1	1	1	1	1	8-1803016-5	CRIMPER, INSULATION F	3
-	1	1	1	1	1	455888-8	SPACER, CRIMPER	2
-	1	1	1	1	1	6-456406-5	CRIMPER, WIRE PREMIUM	1
-77	-7	-6	-5	-2	-1	PART NO	DESCRIPTION	ITEM NO

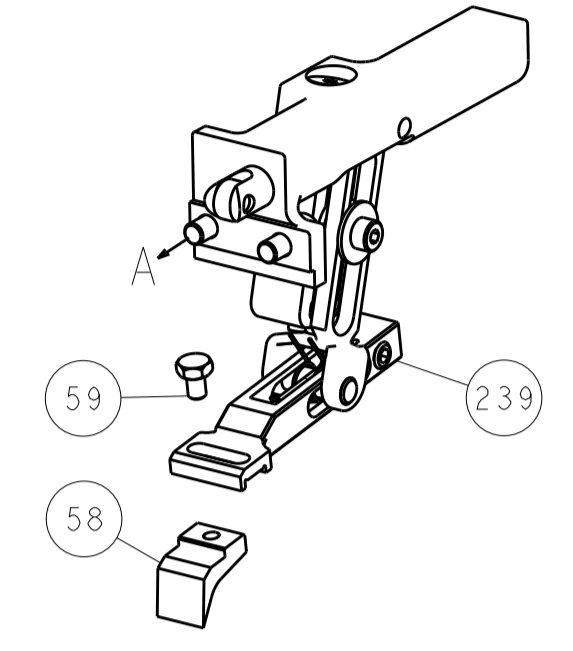
DIMENSIONS:		TOLERANCES UNLESS OTHERWISE SPECIFIED:		DWG		CHK		DATE	
mm	0 PLC ±	1 PLC ±	2 PLC ±	3 PLC ±	4 PLC ±	5 PLC ±	6 PLC ±	7 PLC ±	8 PLC ±
	ANGLES	FINISH							
MATERIAL									
Customer Accessible Production Drawing				SCALE	1:1	SHEET	1	OF	4
Customer Accessible Production Drawing				SCALE	1:1	SHEET	1	OF	4

LOC		DIST		REVISIONS			
A	66	P	LTM	DESCRIPTION	DATE	OWN	APVD
				SEE SHEET 1			

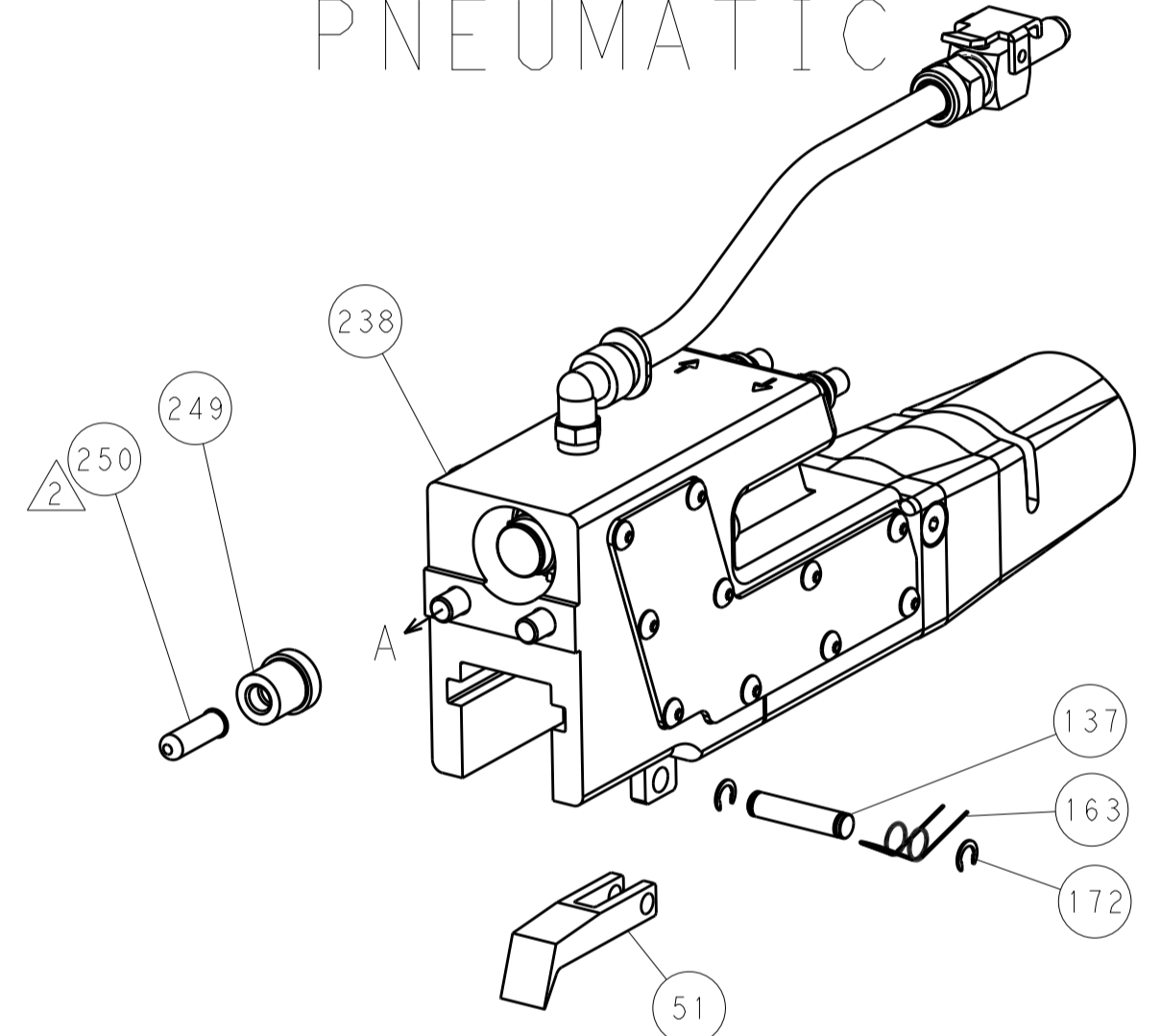


HOLDDOWN SET-UP

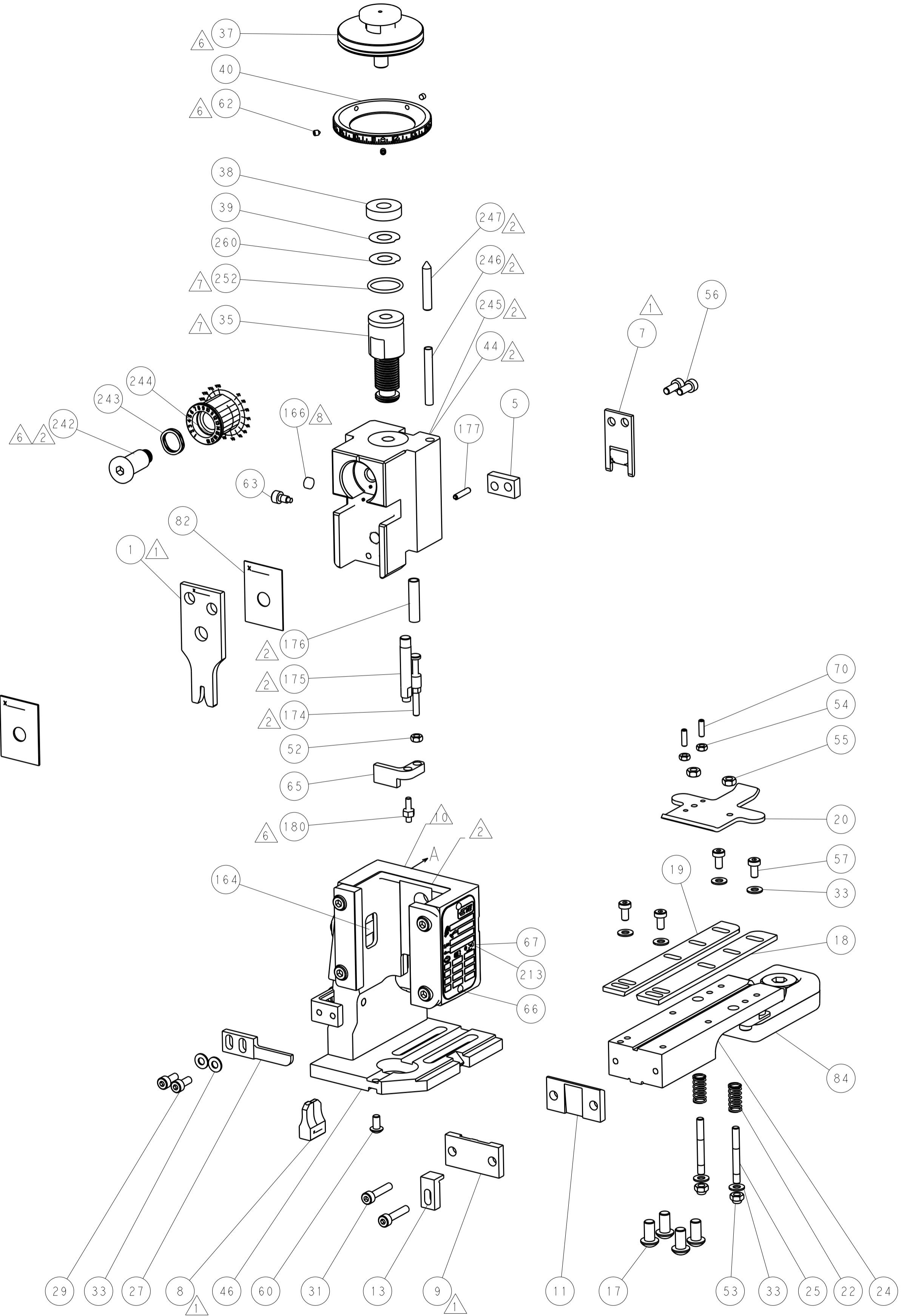
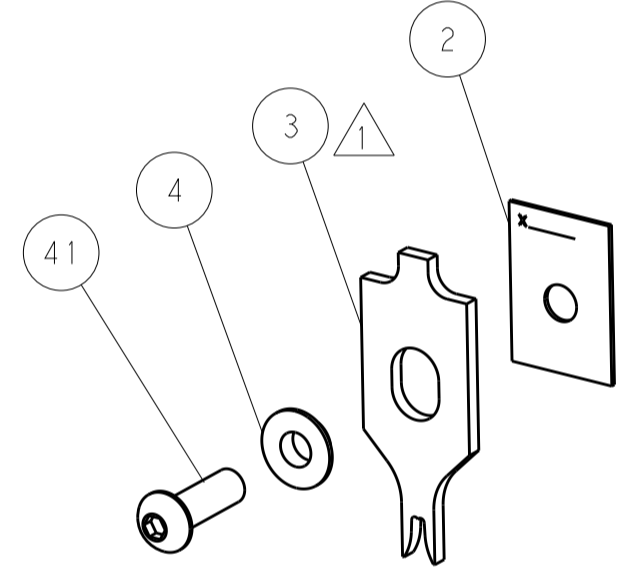
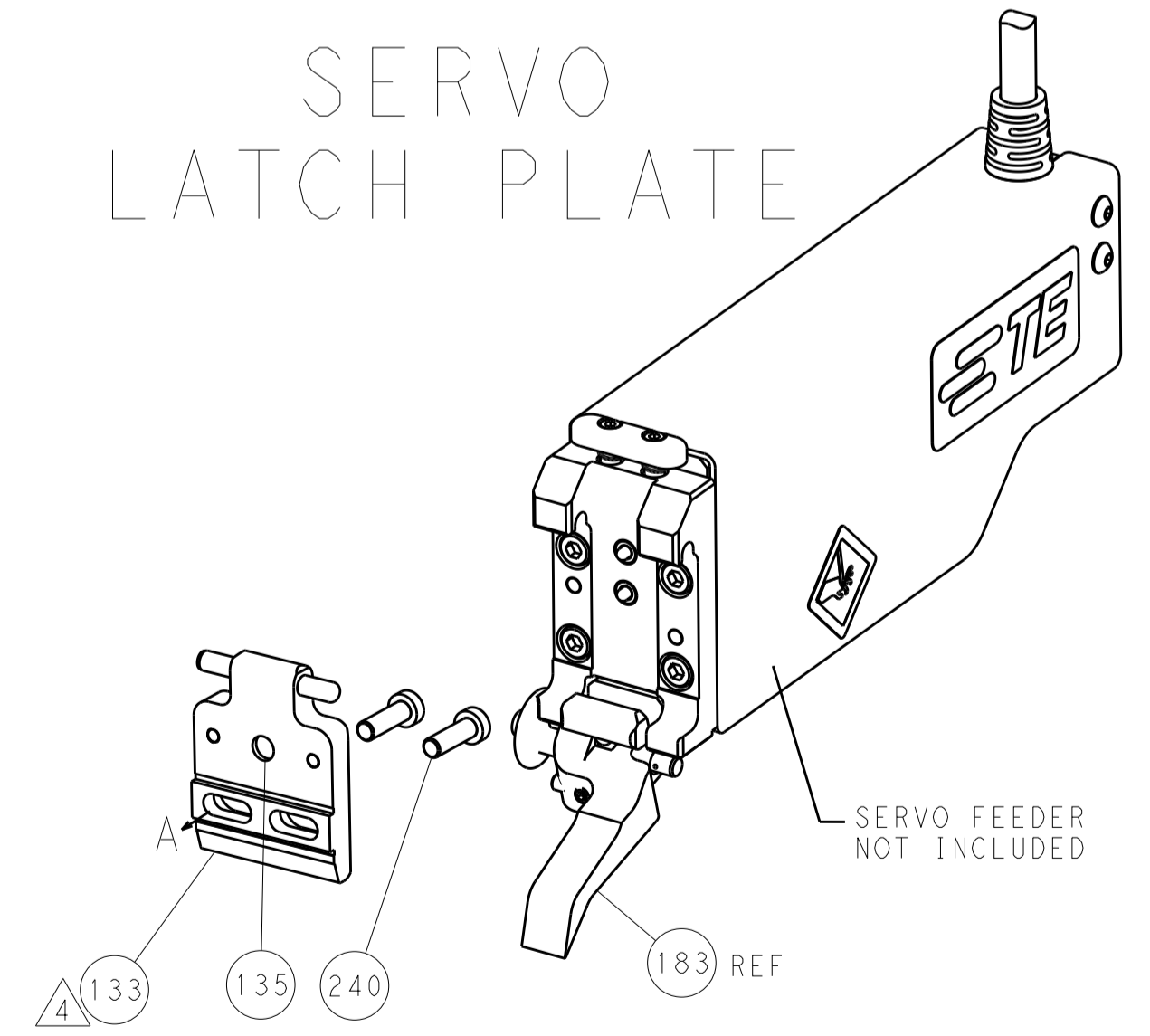
FEED TYPE  
MECHANICAL



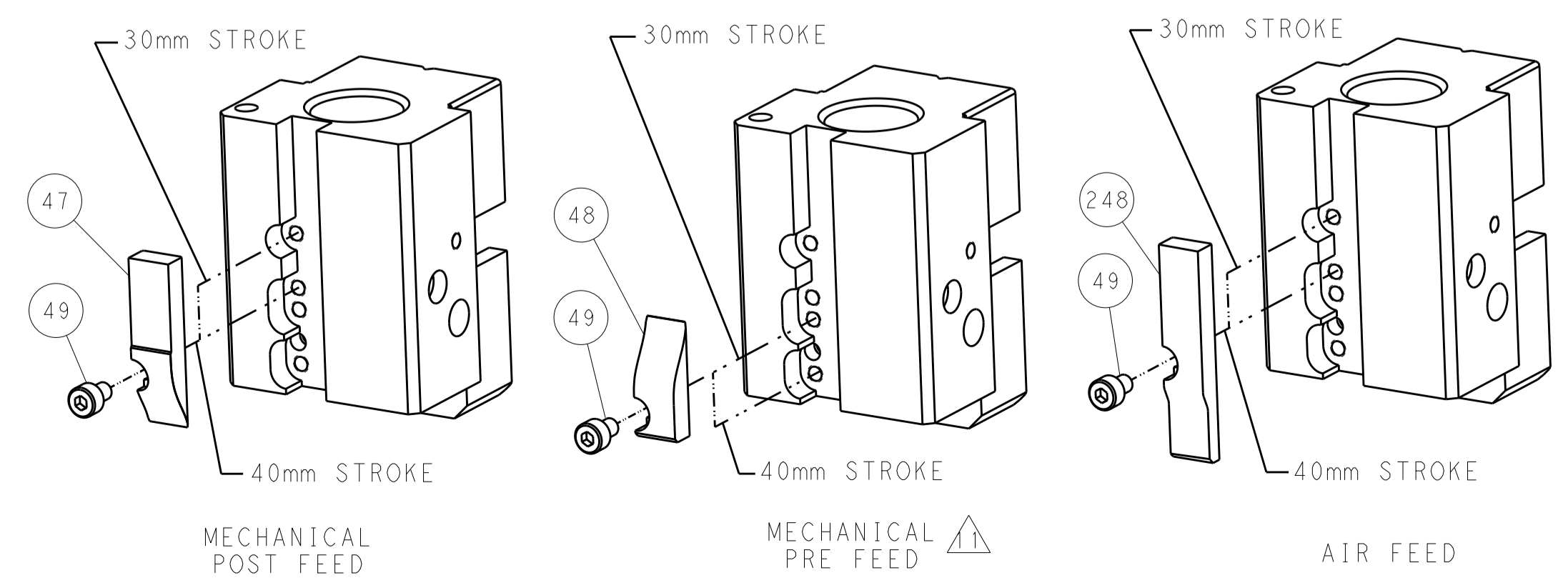
PNEUMATIC



SERVO  
LATCH PLATE



CAM POSITIONS



ATLANTIC VERSION  
 Shown on sheets 1 of 4 & 2 of 4  
 (Pacific version shown on sheets 3 of 4 & 4 of 4)

DIMENSIONS:		TOLERANCES UNLESS OTHERWISE SPECIFIED:		DWG: X. ZHAO 13AUG2015		TE Connectivity	
mm	0 PLC ±	1 PLC ±	2 PLC ±	3 PLC ±	4 PLC ±	5 PLC ±	Harrisburg, PA 17105-3608
MATERIAL:		FINISH:		CHK: L. ZHANG 13AUG2015		NAME: Ocean End Feed Applicator	
				APVD: H. GUO 13AUG2015		SIZE: A1 00779 ©=2150612	
				WEIGHT:		Customer Accessible Production Drawing	
				SCALE: 1:1		SHEET 2 OF 4 REV A	

PACIFIC VERSION TERMINATOR INTERFACE ADAPTER	PART NUMBER	REVISION	DESCRIPTION	FEED TYPE	CONVERT TO						PART NUMBERS REQUIRED							
					MECHANICAL FEED	SERVO LATCH PLATE	SMART APPLICATOR	MECHANICAL FEED	SERVO LATCH PLATE	SMART APPLICATOR	PNEUMATIC FEED	SERVO LATCH PLATE	SMART APPLICATOR	PNEUMATIC FEED	SERVO LATCH PLATE	SMART APPLICATOR		
	2-2150612-1	A	FINE CRIMP HEIGHT ADJUST	MECHANICAL	2119950-1	2119792-2	-	2119641-2	-	-	2063440-1	2119951-1	1901697-1	8-2150612-5	-	-	2168400-7 (QUANTITY 2)	
	2-2150612-2	A	FINE CRIMP HEIGHT ADJUST	PNEUMATIC	2119949-1	2063961-1	5-18022-5	2119653-2	-	-	-	2119951-1	1901697-1	8-2150612-5	-	-	2168400-7 (QUANTITY 2)	
	2-2150612-5	A	FINE CRIMP HEIGHT ADJUST	SERVO LATCH PLATE	2119949-1	2063961-1	5-18022-5	2119653-2	-	-	-	2119951-1	1901697-1	8-2150612-5	-	-	-	
	2-2150612-7	A	FINE CRIMP HEIGHT ADJUST	NONE	-	-	-	-	-	-	-	-	-	-	-	-	-	
	7-2150612-7	A	CRIMP TOOLING KIT	-	-	-	-	-	-	-	-	-	-	-	-	-	-	
						2119950-1	2119792-2	-	2119641-2	-	-	2063440-1	2119951-1	1901697-1	8-2150612-5	-	-	2168400-7 (QUANTITY 2)
						2119949-1	2063961-1	5-18022-5	2119653-2	-	-	-	2119951-1	1901697-1	8-2150612-5	-	-	-

APPLICATOR DATA		
CRIMP	SIZE	TYPE
WIRE	2.29 mm (.090)	F
INSUL	3.38 mm (.133)	F
APPL INSTRUCTIONS 408-10390		

TERMINAL DATA: ESCUBEDO TERMINAL	ESCUBEDO CRIMP SPECIFICATION		
TERMINAL NAME: AMP MCP 2.8K	FLAT TYPE RECEPTACLE		
WIRE STRIP LENGTH	INSULATION DIAMETER RANGE		
4.50-5.50 mm (.177-.217 IN)	Ø1.88-2.50 mm (.074-.098 IN)		
TERMINAL APPLICATION SPECIFICATION	4333.00 Rev 4		
TERMINALS APPLIED			
TE TERMINAL	ESCUBEDO TERMINAL	TE TERMINAL	ESCUBEDO TERMINAL
2113836-1	4333.00	2113836-2	4333.02
2113836-3	4333.30	2113836-4	4333.32

WIRE SIZE	CRIMP HEIGHT mm [INCH]	CRIMP HEIGHT REFERENCE SETTING
1.00mm2	1.54+/-0.05 (.061+/-0.002)	4.5
0.75mm2	1.44+/-0.05 (.057+/-0.002)	5.6
0.50mm2	1.34+/-0.05 (.053+/-0.002)	6.5

- RECOMMENDED SPARE PARTS
- GREASE BEARING SURFACES LIGHTLY
- LUBRICATE DAILY PER THE APPLICATOR INSTRUCTION SHEET SUPPLIED WITH THE APPLICATOR.
- APPLICATOR SPECIFIC DATA TO BE ENTERED INTO BLANK MEMORY CHIP AT ASSEMBLY. SEE BELOW FOR PART NUMBER:  
MECHANICAL FEED WITH "SMART APPLICATOR" CONVERSION: 8-2150612-4  
PNEUMATIC FEED WITH "SMART APPLICATOR" CONVERSION: 8-2150612-4  
SERVO FEED WITH "FINE CRIMP HEIGHT ADJUST": 8-2150612-5
- ADJUSTMENT OF THE STRIPPER MAY BE REQUIRED WHEN MOVING THE APPLICATOR BETWEEN BENCH AND LEADMAKER APPLICATIONS.
- APPLY PART NUMBER 1-23419-5 LOCTITE TO THREADS OF ITEMS 62 & 180. APPLY PART NUMBER 2-23419-6 LOCTITE TO THREADS OF ITEM 242.
- GREASE THREADS, GROOVE AND O-RING ON ITEMS 139 & 153.
- MAGNET, ITEM 166 MUST BE ORIENTED CORRECTLY IN ORDER TO PROPERLY ACTUATE THE COUNTER.
- CRIMP HEIGHT REFERENCE SETTING WAS THE SETTING USED WHEN THE APPLICATOR WAS QUALIFIED AT THE FACTORY. ADJUSTMENT MAY BE NECESSARY WHEN RUNNING APPLICATOR IN THE FIELD.
- SPARE FEED CAM STORAGE LOCATION REFER TO INSTRUCTION SHEET FOR ADDITIONAL INFORMATION.
- THE RECOMMENDED SET-UP FOR END FEED APPLICATORS IS POST-FEED WITH ITEM 2119653-1. THE APPLICATOR CAN BE CONFIGURED FOR PRE-FEED WITH ITEM 2119652-1 BUT MAY ENCOUNTER PROBLEMS WITH SOME APPLICATIONS. FEED ISSUES OR TERMINAL JAMMING MAY OCCUR IN THE PRE-FEED CONFIGURATION.

**\*WARNING**  
ON INSTALLATION, SET WIRE DISC, ITEM 40 TO LARGEST WIRE SIZE SETTING. USE OF SETTINGS BELOW MINIMUM REQUIRED CRIMP HEIGHT SETTING WILL CAUSE DAMAGE TO CRIMP TOOLING.

ITEM NO	DESCRIPTION	ITEM NO
-77-27-25-22-21	PART NO	
251	FINE ADJUST HEAD ASM, PACIFIC STYLE	251
250	PUSH ROD, AIR FEED	250
249	BUSHING, LCH5-12, MISUMI	249
246	SPRING, COMPRESSION	246
244	CAM, SNAIL, INSULATION ADJUSTMENT	244
243	WASHER, WAVE SPRING, CREST-TO-CREST	243

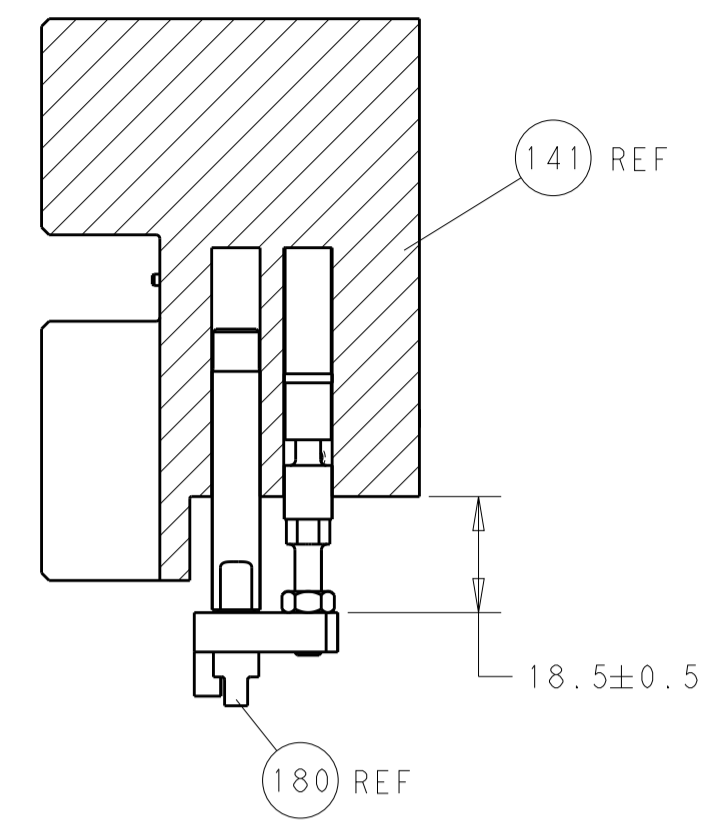
PACIFIC VERSION  
Shown on sheets 3 of 4 & 4 of 4  
(Atlantic version shown on sheets 1 of 4 & 2 of 4)

SET UP GAUGE	LOC	DIST	REVISIONS			
2119599-2	A	66	REV	DATE	BY	APPV
			1	SEE SHEET 1		

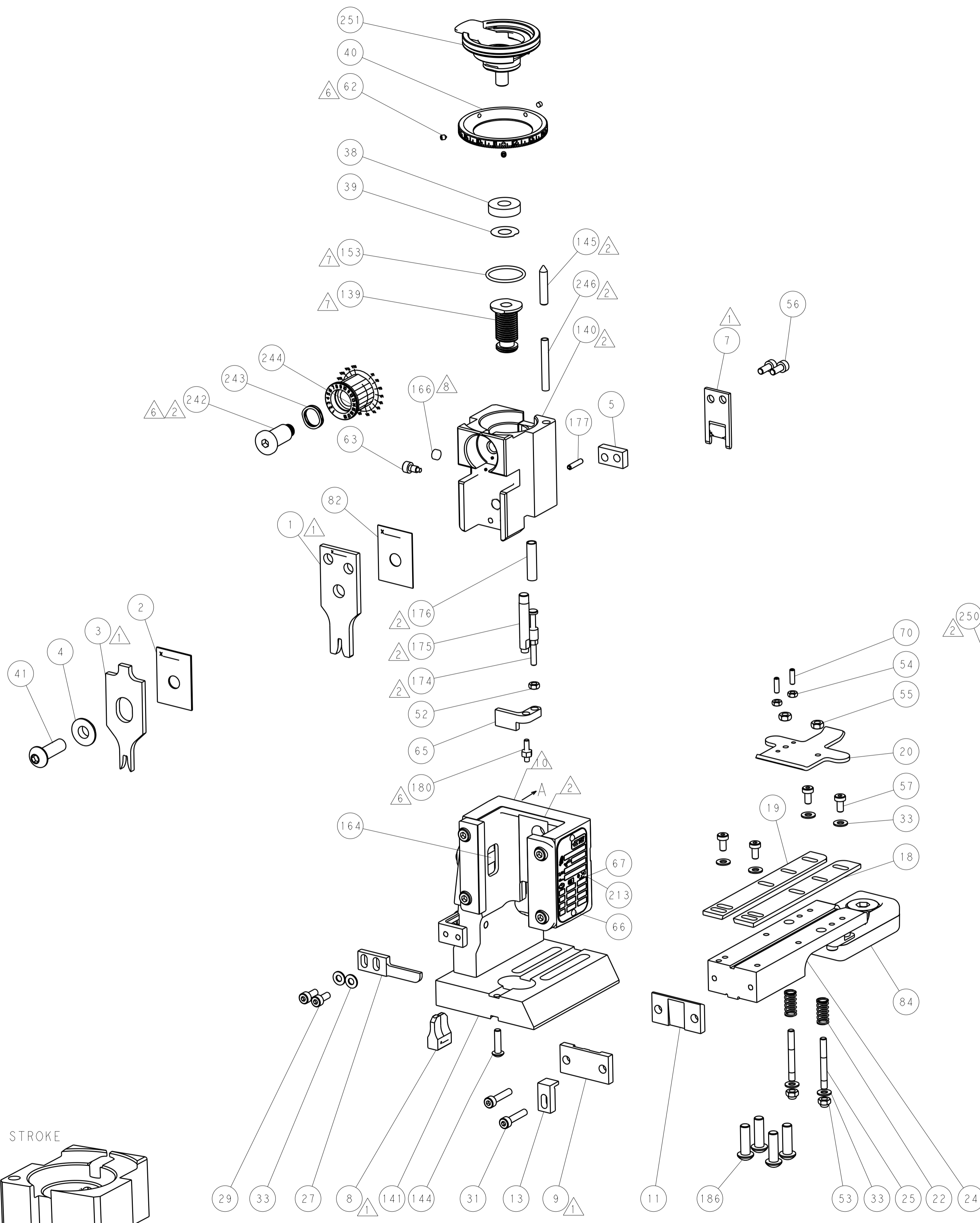
ITEM NO	DESCRIPTION	ITEM NO
242	RETAINER, INSULATION DIAL	242
240	SHCS, LOW HEAD, RoHS, M5 x 10	240
239	MECHANICAL FEED ASSEMBLY	239
238	AIR FEED MODULE	238
213	TAG, IDENTIFICATION	213
186	SCR, BHSC, RoHS (M6 X 20)	186
183	FEED FINGER ASSEMBLY, EF	183
180	STANDOFF, HOLD-DOWN	180
177	PIN, SLOTTED SPRING 3.0 X 14.0	177
176	SPRING, COMPRESSION	176
175	GUIDE PIN, HOLDDOWN	175
174	GUIDE PIN, HOLDDOWN	174
172	RING, RETAIN, EXTERN, 3/16 CRESCENT	172
166	MAGNET, RARE EARTH HIGH ENERGY	166
164	COUNTER, MAGNETIC	164
163	SPRING, FEED FINGER	163
153	O-RING, .801 ID, .070 DIA. MAT.	153
152	FEED CAM, AIR FEED	152
145	DETENT PIN	145
144	SCR, BHSC, RoHS (M4 X 16)	144
142	FEED CAM, POST FEED	142
141	APPLICATOR BASIC ASSEMBLY, EF	141
140	RAM, ASIAN STYLE, END FEED	140
139	BOLT, ADJUSTMENT	139
137	PIN, RETAIN, GRVD, 3/16 X .854	137
135	MEMORY CHIP, PROGRAMMED	135
133	SERVO FEED LATCH ASM	133
84	ASSY, LUBRICATOR, END FEED	84
82	SPACER, CRIMPER	82
71	DOCUMENTATION PACKAGE	71
70	SCR, SET, FLT POINT M3 X 10.0	70
67	TAG, IDENTIFICATION	67
66	SCREW, DRIVE, RH, RoHS, 2 x .188	66
65	HOLDDOWN, TERMINAL	65
63	LIMITER, ADJUSTMENT BOLT	63
62	SCR, SET, SOC, CONE POINT, M3 x 4.0	62
59	SCR, HEX HD CAP, M4 X 6.0	59
58	FEED FINGER	58
57	SHCS, LOW HEAD, RoHS, M4 X 8	57
56	SCR, SKT HD CAP, RoHS, M4 X 10	56
55	NUT, HEX, REG, RoHS, M4	55
54	NUT, HEX, REG, RoHS, M3	54
53	NUT, LOCK, HEX, TORQUE (M4)	53
52	NUT, HEX, REG, RoHS, M3.5	52
51	PAWL, EF, AIR	51
49	SCR, SKT HD CAP M4 X 6.0	49
48	FEED CAM, PRE FEED	48
41	SCR, BHSC, RoHS (M8 X 25)	41
40	DISC, NUMBERED FA WIRE ADJUSTMENT	40
39	APPLICATOR SHIM PACK	39
38	RAM WASHER, PRECISION	38
33	WASHER, FLAT, REG M4	33
31	SCR, SKT HD CAP, RoHS, M4 X 20	31
29	SCR, SKT HD CAP, RoHS, M4 X 10	29
27	STRIPPER (MACHINING)	27
25	STUD, THREADED	25
24	PLATE, STRIP GUIDE	24
22	SPRING, COMPRESSION	22
20	DRAG	20
19	STRIP GUIDE, REAR	19
18	STRIP GUIDE, FRONT	18
13	SPACER, HOLD-DOWN	13
11	PLATE, REAR SHEAR	11
10		10
9	PLATE, FRONT SHEAR	9
8	ANVIL, COMBINATION, END FEED	8
7	BLADE, SLUG	7
6		6
5	SPACER	5
4	BLOCK, FL CRIMPER SPACER	4
3	CRIMPER, INSULATION F	3
2	SPACER, CRIMPER	2
1	CRIMPER, WIRE PREMIUM	1

DIMENSIONS:	TOLERANCES UNLESS OTHERWISE SPECIFIED:	DATE:	13AUG2015
mm	0 PLC ±	CHK:	X. ZHAO
1 PLC ±	1 PLC ±	APPV:	L. ZHANG
2 PLC ±	2 PLC ±	DATE:	13AUG2015
3 PLC ±	3 PLC ±	NAME:	
4 PLC ±	4 PLC ±	PRODUCT SPEC:	
ANGLES	ANGLES	APPLICATION SPEC:	
FINISH	FINISH	SIZE:	A1
		CAGE CODE:	00779
		DRAWING NO:	2150612
		RESTRICTED TO:	
		WEIGHT:	
		SCALE:	1:1
		SHEET:	3 OF 4
		REV:	A

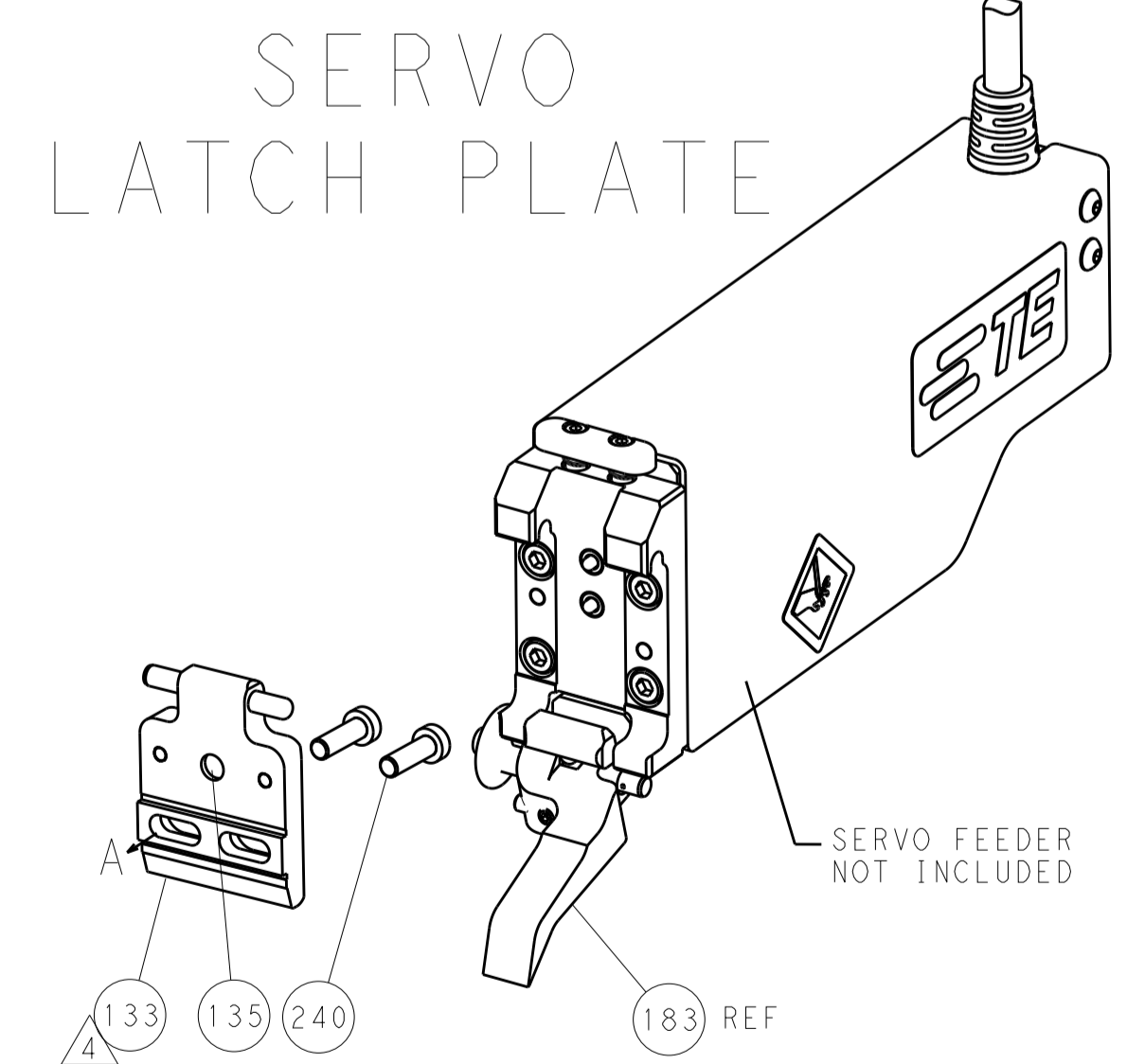
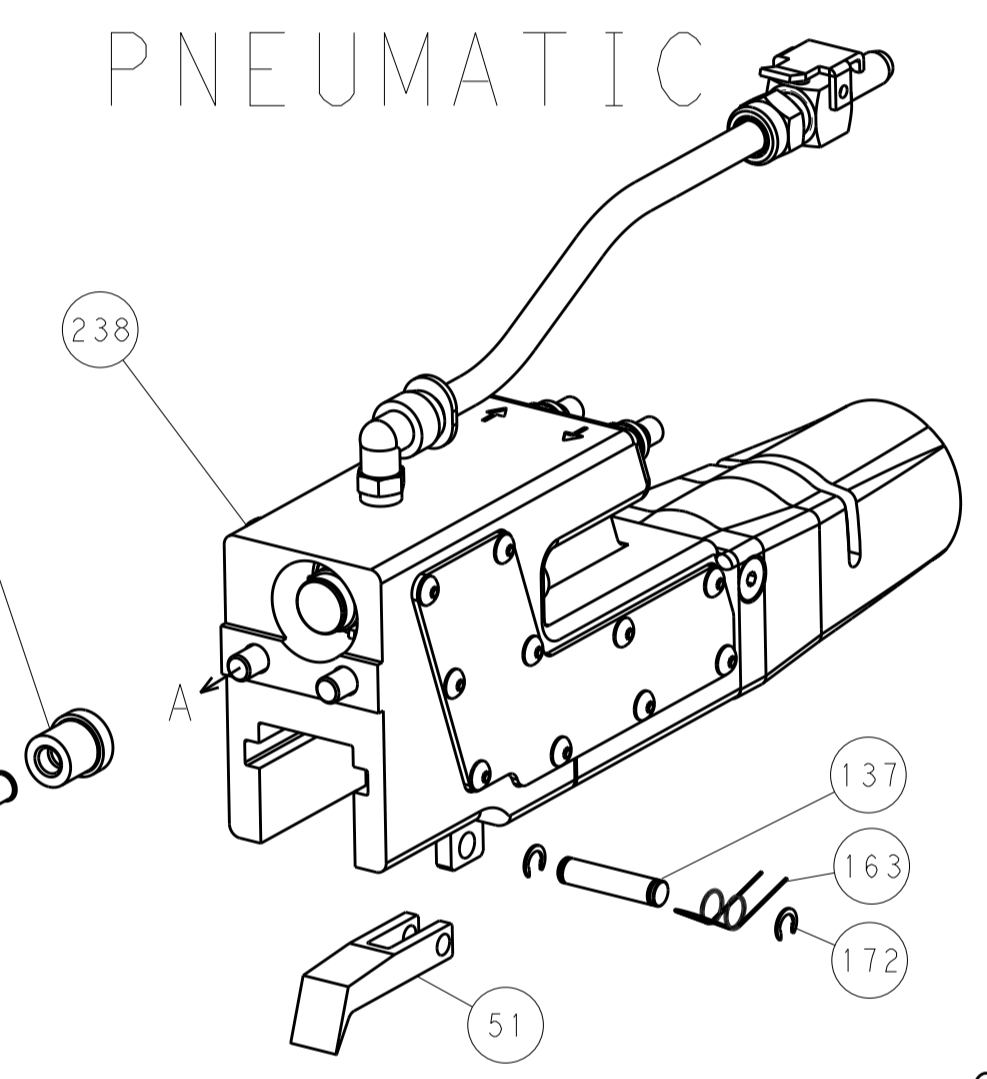
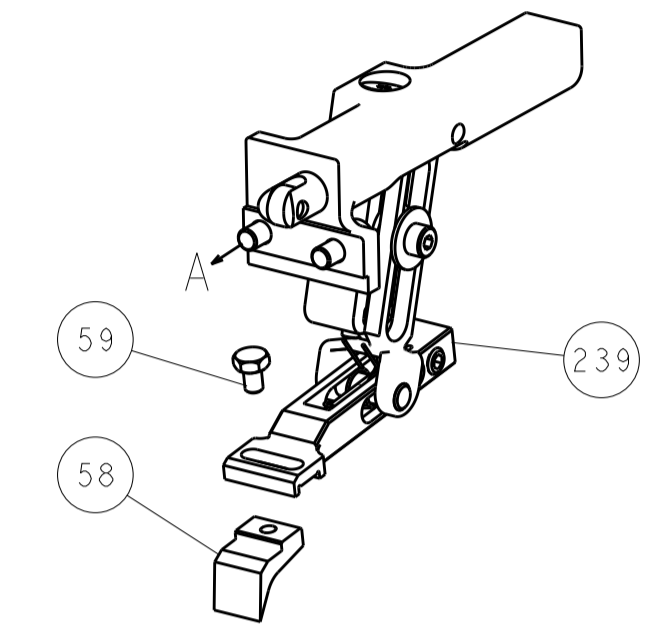
LOC		DIST		REVISIONS			
A	66	P	LTM	DESCRIPTION	DATE	DWN	APVD
		-		SEE SHEET 1			



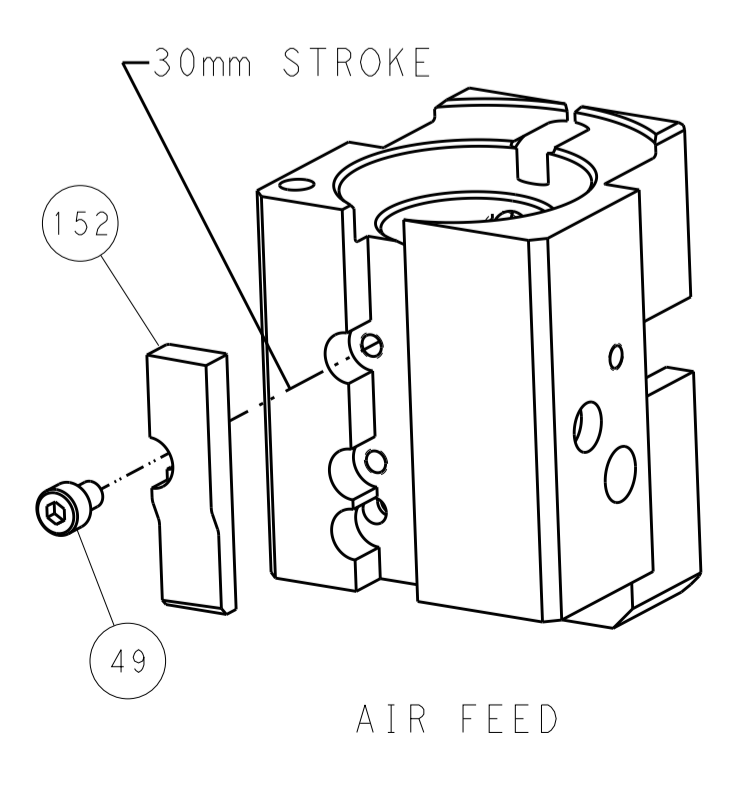
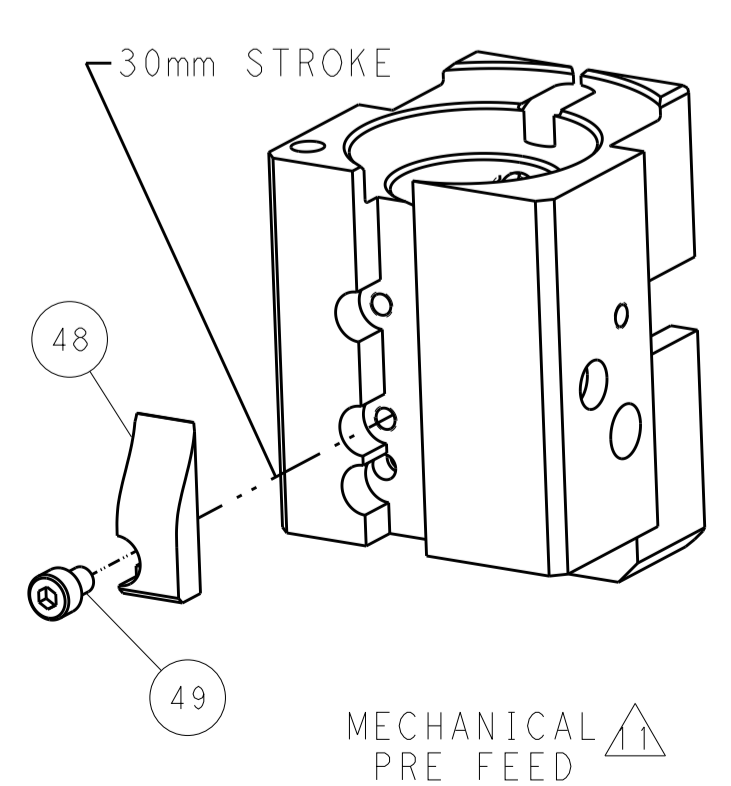
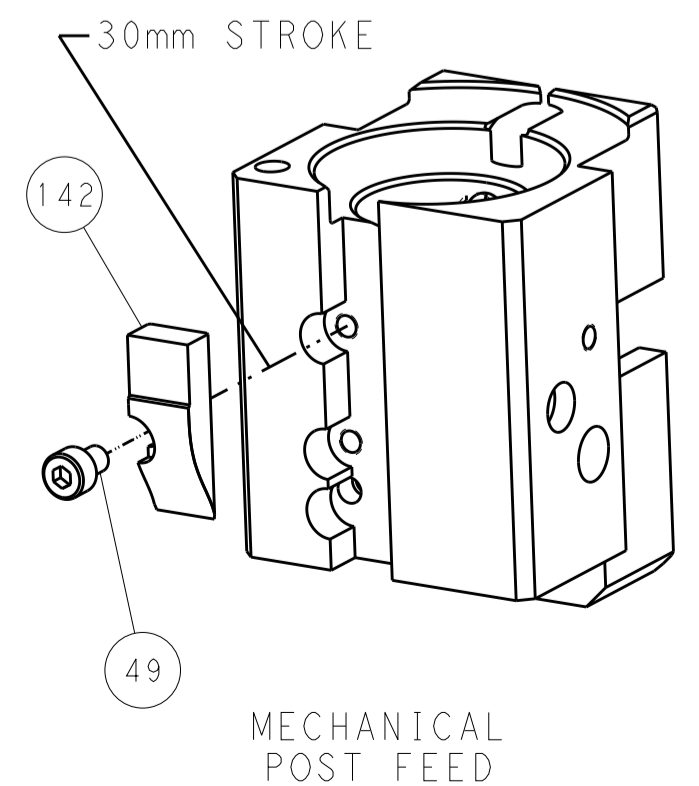
HOLDDOWN SET-UP



FEED TYPE  
MECHANICAL



CAM POSITIONS



PACIFIC VERSION  
 Shown on sheets 3 of 4 & 4 of 4  
 (Atlantic version shown on sheets 1 of 4 & 2 of 4)

DIMENSIONS:		TOLERANCES UNLESS OTHERWISE SPECIFIED:		DWN X. ZHAO 13AUG2015		STE TE Connectivity Harrisburg, PA 17105-3608	
mm	0 PLC ±	1 PLC ±	2 PLC ±	3 PLC ±	4 PLC ±	APVD L. ZHANG 13AUG2015	NAME Ocean End Feed Applicator
MATERIAL	FINISH	WEIGHT	SIZE	CAGE CODE	DRAWING NO	RESTRICTED TO	
			A1	00779	2150612	Customer Accessible Production Drawing	SCALE 1:1 SHEET 4 OF 4 REV A