

| ATLANTIC VERSION TERMINATOR INTERFACE ADAPTER | PART NUMBER | REVISION | DESCRIPTION | FEED TYPE | APPLICATOR STYLE CONVERSION CHART | | | | | |
|---|-------------|----------|--------------------------|-------------------|-----------------------------------|-----------------------|-------------|---|---|------------------------|
| | | | | | CONVERT TO | PART NUMBERS REQUIRED | | | | |
| | 2150601-2 | A | FINE CRIMP HEIGHT ADJUST | PNEUMATIC | - | - | - | - | - | - |
| | 2150601-5 | A | FINE CRIMP HEIGHT ADJUST | SERVO LATCH PLATE | 2119951-1 | 1901697-1 | 8-2150601-5 | - | - | 2168400-7 (QUANTITY 2) |
| | 2150601-6 | A | NON-CRIMP HEIGHT ADJUST | SERVO LATCH PLATE | 2161326-1 | - | 8-2150601-4 | - | - | - |
| | 2150601-7 | A | FINE CRIMP HEIGHT ADJUST | NONE | - | - | - | - | - | - |
| | 7-2150601-7 | A | CRIMP TOOLING KIT | - | - | - | - | - | - | - |

| APPLICATOR DATA | | |
|-----------------------------|------|--|
| CRIMP SIZE | TYPE | |
| WIRE 4.32 mm [.170] | F | |
| INSUL 5.33 mm [.210] | F | |
| APPL INSTRUCTIONS 408-10390 | | |

| TERMINAL DATA: KET TERMINAL TE CRIMP SPECIFICATION | | | |
|--|--------------------------------|-------------|--------------|
| TERMINAL NAME: KET TERMINAL | | | |
| WIRE STRIP LENGTH | INSULATION DIAMETER RANGE | | |
| 0.14-0.17 mm [.006-.007 IN] | Ø3.03-4.04 mm [.119-.159 IN] | | |
| TERMINAL APPLICATION SPECIFICATION | NONE | | |
| TERMINALS APPLIED | | | |
| TE TERMINAL | KET TERMINAL | TE TERMINAL | KET TERMINAL |
| 2113800-1 | ST710262-1 | 2113800-2 | ST710262-2 |

| WIRE SIZE | CRIMP HEIGHT mm [INCH] | CRIMP HEIGHT REFERENCE SETTING |
|---------------------|------------------------------|--------------------------------|
| 12 AWG | 2.83+/-0.05 [.111+/- .002] | 6.7 |
| 3.00mm ² | 2.78+/-0.05 [.109+/- .002] | 7.2 |
| 14 AWG | 2.60+/-0.05 [.102+/- .002] | 9.3 |
| 2.00mm ² | 2.59+/-0.05 [.102+/- .002] | 9.3 |

- RECOMMENDED SPARE PARTS
- GREASE BEARING SURFACES LIGHTLY
- LUBRICATE DAILY PER THE APPLICATOR INSTRUCTION SHEET SUPPLIED WITH THE APPLICATOR.
- APPLICATOR SPECIFIC DATA TO BE ENTERED INTO BLANK MEMORY CHIP AT ASSEMBLY. SEE BELOW FOR PART NUMBER:
 PNEUMATIC FEED WITH "SMART APPLICATOR" CONVERSION: 8-2150601-4
 SERVO FEED WITH "FINE CRIMP HEIGHT ADJUST": 8-2150601-5
 SERVO FEED WITH "NON-CRIMP HEIGHT ADJUST": 8-2150601-6
- ADJUSTMENT OF THE STRIPPER MAY BE REQUIRED WHEN MOVING THE APPLICATOR BETWEEN BENCH AND LEADMAKER APPLICATIONS.
- APPLY PART NUMBER 1-23419-5 LOCTITE TO THREADS OF ITEMS 62 & 180. APPLY PART NUMBER 2-23419-6 LOCTITE TO THREADS OF ITEM 242. FOR -6 ONLY APPLY PART NUMBER 1-23419-5 LOCTITE TO THREADS OF ITEMS 37 & 180.
- GREASE THREADS, GROOVE AND O-RING ON ITEMS 35 & 252.
- MAGNET, ITEM 166 MUST BE ORIENTED CORRECTLY IN ORDER TO PROPERLY ACTUATE THE COUNTER.
- CRIMP HEIGHT REFERENCE SETTING WAS THE SETTING USED WHEN THE APPLICATOR WAS QUALIFIED AT THE FACTORY. ADJUSTMENT MAY BE NECESSARY WHEN RUNNING APPLICATOR IN THE FIELD.
- TERMINAL PITCH NOT COMPATIBLE WITH MECHANICAL FEED.
- WHEN ASSEMBLING -6 NON-CRIMP HEIGHT ADJUST APPLICATOR USE SHIM PACK 2119957-2 TO ALIGN APPLICATOR'S MAXIMUM WIRE CRIMP HEIGHT AT NORMAL TERMINATOR SHUT HEIGHT

***WARNING**
 ON INSTALLATION, SET WIRE DISC, ITEM 40 TO LARGEST WIRE SIZE SETTING. USE OF SETTINGS BELOW MINIMUM REQUIRED CRIMP HEIGHT SETTING WILL CAUSE DAMAGE TO CRIMP TOOLING.

| -77 | -7 | -6 | -5 | -2 | PART NO | DESCRIPTION | ITEM NO |
|-----|----|----|----|----|-----------|---------------------------------|---------|
| - | - | 1 | - | - | 2119957-2 | APPLICATOR SHIM PACK | 260 |
| - | 1 | - | 1 | 1 | 8-21084-0 | O-RING, .676 ID, .070 DIA. MAT. | 252 |
| - | - | - | - | 1 | 2119640-1 | PUSH ROD, AIR FEED | 250 |
| - | - | - | - | 1 | 2079988-1 | BUSHING, LCH5-12, MISUMI | 249 |
| - | - | - | - | 1 | 2119641-1 | FEED CAM, AIR FEED | 248 |
| - | 1 | - | 1 | 1 | 2119798-1 | DETENT PIN | 247 |

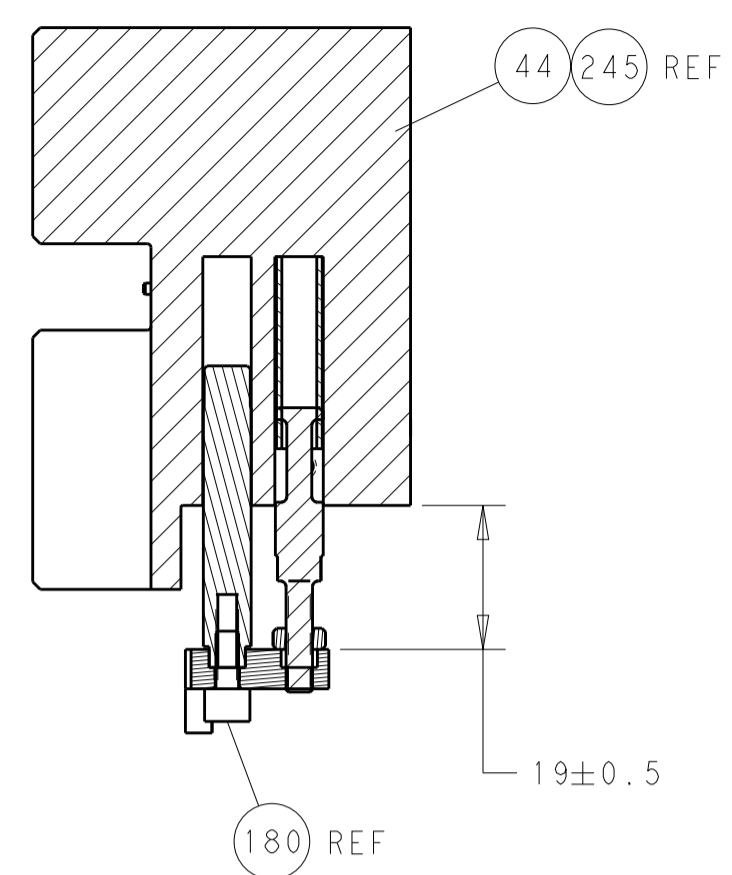
ATLANTIC VERSION
 Shown on sheets 1 of 4 & 2 of 4
 (Pacific version shown on sheets 3 of 4 & 4 of 4)

| SET UP GAUGE | LOC | DIST | REVISIONS | | | |
|--------------|-----|------|-----------|-------------|-----------|-------|
| 2119599-2 | A | 66 | REV | DATE | BY | APPD |
| | | | 1 | DEVELOPMENT | 31JUL2015 | JH UG |
| | | | A | RELEASED | 20OCT2015 | JH GB |

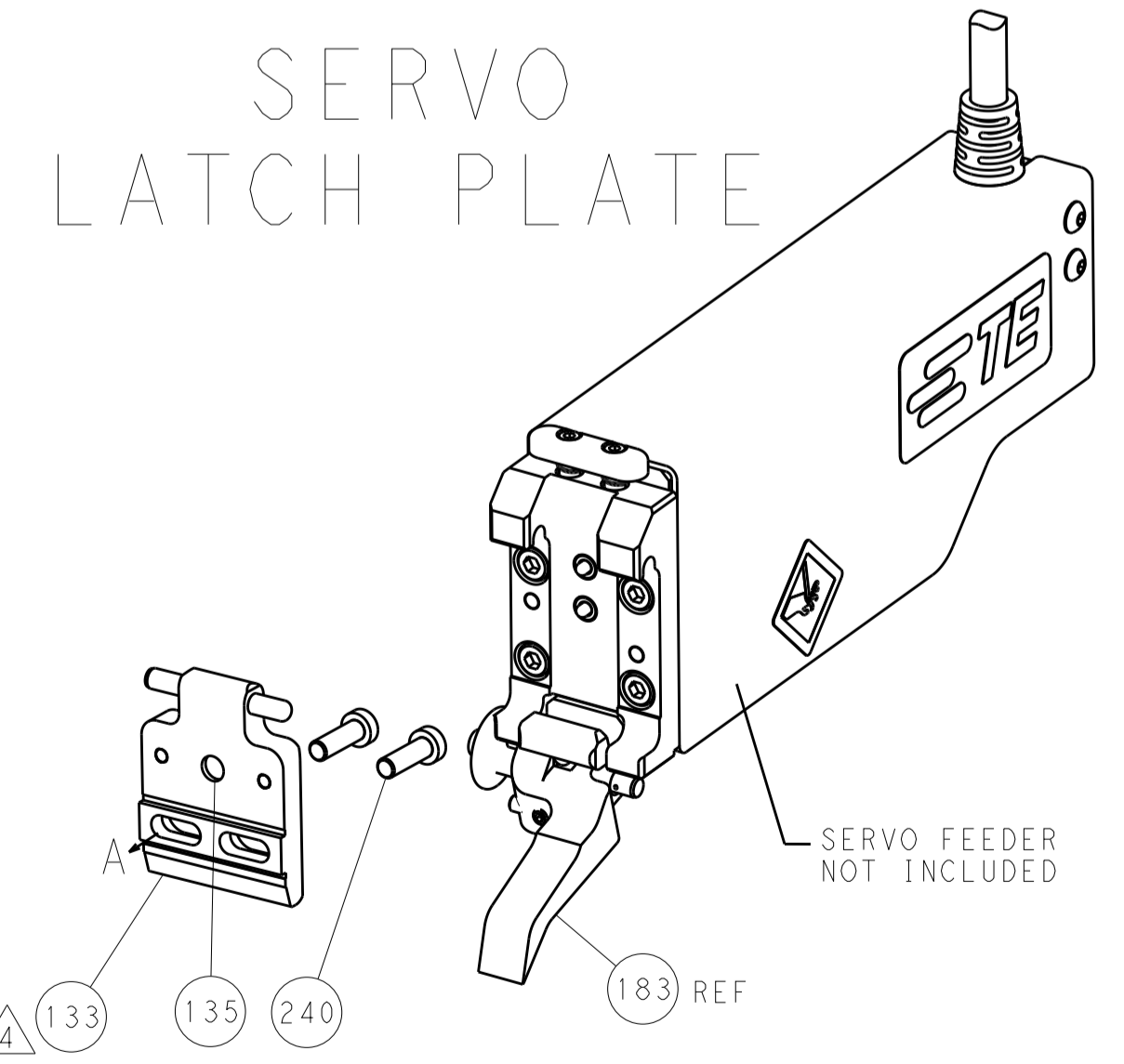
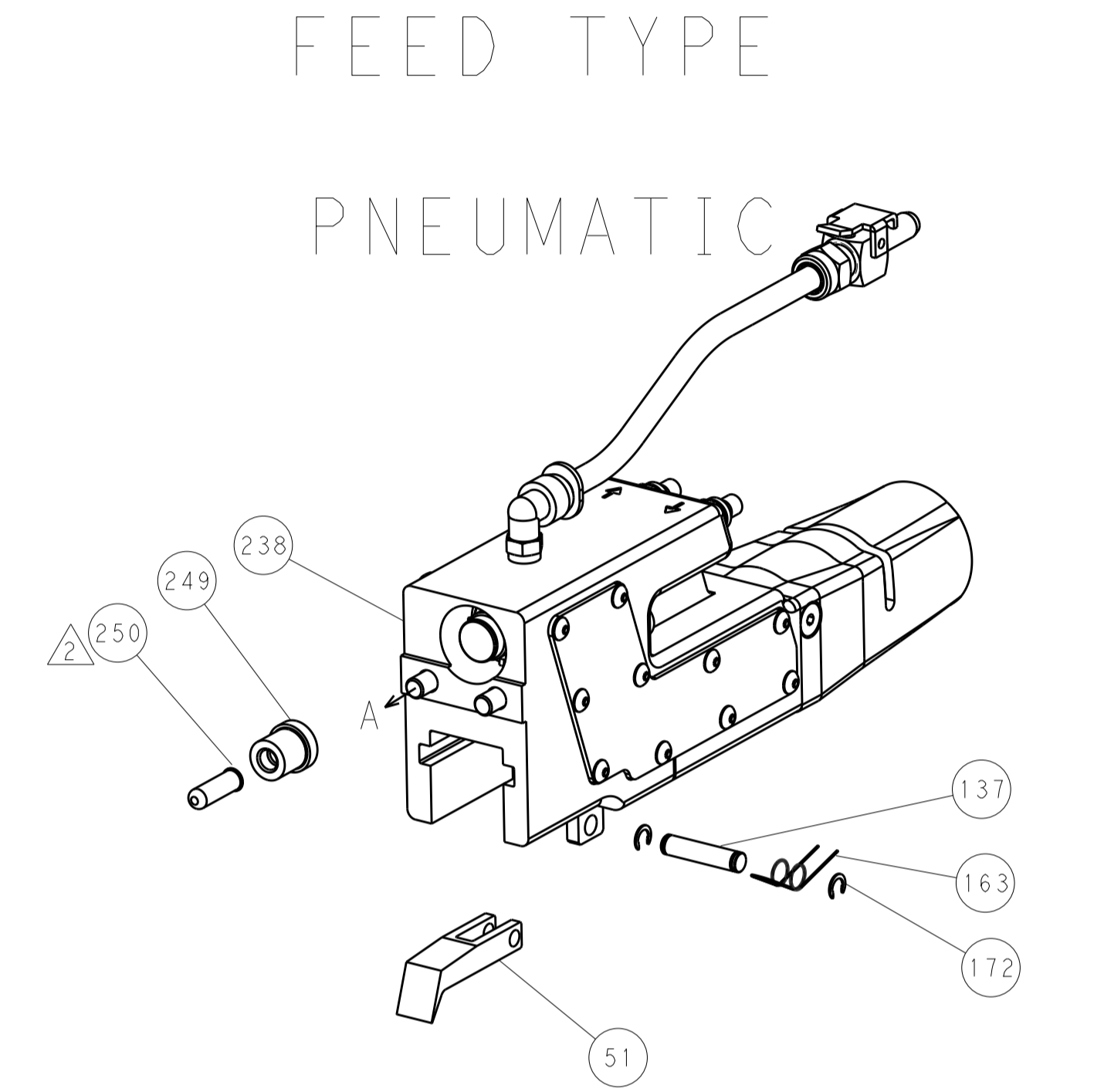
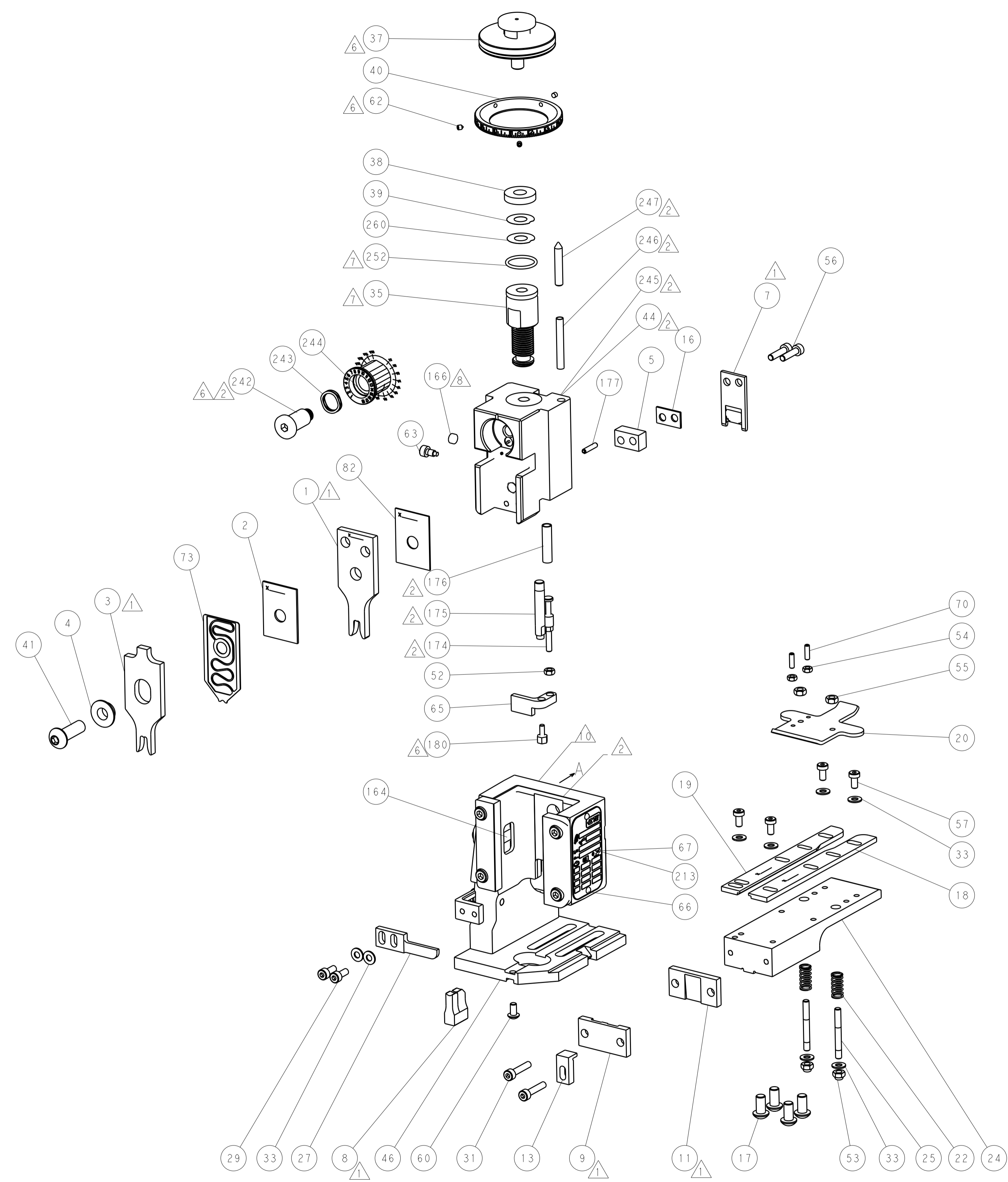
| REV | DATE | BY | APPD | DESCRIPTION | ITEM NO | | |
|-----|------|-----|------|-------------|-------------|--------------------------------------|-----|
| - | 1 | - | 1 | 1 | 1-22279-3 | SPRING, COMPRESSION | 246 |
| - | - | 1 | - | - | 2119759-1 | RAM, AMP STYLE, END FEED, NON-ADJUST | 245 |
| - | 1 | 1 | 1 | 1 | 2119082-3 | CAM, SNAIL, INSULATION ADJUSTMENT | 244 |
| - | 1 | 1 | 1 | 1 | 2079764-1 | WASHER, WAVE SPRING, CREST-TO-CREST | 243 |
| - | 1 | 1 | 1 | 1 | 2119083-1 | RETAINER, INSULATION DIAL | 242 |
| - | - | 2 | 2 | - | 2168400-7 | SHCS, LOW HEAD, RoHS, M5 X 10 | 240 |
| - | - | 1 | - | 1 | 2063440-2 | AIR FEED MODULE | 238 |
| - | - | 1 | 1 | - | 2119740-2 | TAG, IDENTIFICATION | 213 |
| - | 1 | 1 | 1 | 1 | 1901697-1 | FEED FINGER ASSEMBLY, EF | 183 |
| - | 1 | 1 | 1 | 1 | 1752354-2 | STANDOFF, HOLD-DOWN | 180 |
| - | 1 | 1 | 1 | 1 | 6-993111-6 | PIN, SLOTTED SPRING 3.0 X 14.0 | 177 |
| - | 1 | 1 | 1 | 1 | 8-22280-7 | SPRING, COMPRESSION | 176 |
| - | 1 | 1 | 1 | 1 | 1752353-2 | GUIDE PIN, HOLDDOWN | 175 |
| - | 1 | 1 | 1 | 1 | 1901680-2 | GUIDE PIN, HOLDDOWN | 174 |
| - | - | - | - | 2 | 21045-3 | RING, RETAIN, EXTERN, 3/16 CRESCENT | 172 |
| - | - | - | - | 1 | 994969-1 | MAGNET, RARE EARTH HIGH ENERGY | 166 |
| - | REF | REF | REF | REF | 994970-2 | COUNTER, MAGNETIC | 164 |
| - | - | - | - | 1 | 240638-1 | SPRING, FEED FINGER | 163 |
| - | - | - | - | 1 | 3-23627-7 | PIN, RETAIN, GRVD, 3/16 X .854 | 137 |
| - | - | REF | REF | - | SEE NOTE 4 | MEMORY CHIP, PROGRAMMED | 135 |
| - | - | 1 | 1 | - | 1633743-1 | SERVO FEED LATCH ASM | 133 |
| - | 1 | 1 | 1 | 1 | 455888-6 | SPACER, CRIMPER | 82 |
| - | 1 | 1 | 1 | 1 | 2119791-9 | DEPRESSOR, WIRE | 73 |
| - | 1 | 1 | 1 | 1 | 2119956-2 | DOCUMENTATION PACKAGE | 71 |
| - | 2 | 2 | 2 | 2 | 2-18032-2 | SCR, SET, FLT POINT M3 X 10.0 | 70 |
| - | 1 | - | - | 1 | 2119740-1 | TAG, IDENTIFICATION | 67 |
| - | 2 | 2 | 2 | 2 | 2168078-1 | SCREW, DRIVE, RH, RoHS, 2 x .188 | 66 |
| - | 1 | 1 | 1 | 1 | 1901681-1 | HOLDDOWN, TERMINAL | 65 |
| - | 1 | - | 1 | 1 | 2119793-1 | LIMITER, ADJUSTMENT BOLT | 63 |
| - | 3 | - | 3 | 3 | 992763-5 | SCR, SET, SOC, CONE POINT, M3 X 4.0 | 62 |
| - | 1 | 1 | 1 | 1 | 2079383-4 | SCR, BHSC, RoHS (M4 X 8) | 60 |
| - | - | - | - | - | 5-18022-5 | SCR, HEX HD CAP, M4 X 6.0 | 59 |
| - | - | - | - | - | 2063961-1 | FEED FINGER | 58 |
| - | 4 | 4 | 4 | 4 | 2168400-4 | SHCS, LOW HEAD, RoHS, M4 X 8 | 57 |
| - | 2 | 2 | 2 | 2 | 2168083-8 | SCR, SKT HD CAP, RoHS, M4 X 16 | 56 |
| - | 2 | 2 | 2 | 2 | 5018030-2 | NUT, HEX, REG, RoHS, M4 | 55 |
| - | 2 | 2 | 2 | 2 | 5018030-1 | NUT, HEX, REG, RoHS, M3 | 54 |
| - | 2 | 2 | 2 | 2 | 986965-8 | NUT, LOCK, HEX, TORQUE (M4) | 53 |
| - | 1 | 1 | 1 | 1 | 1-5018030-0 | NUT, HEX, REG, RoHS, M3.5 | 52 |
| - | - | - | - | 1 | 2119792-2 | PAWL, EF, AIR | 51 |
| - | - | - | - | 1 | 18023-9 | SCR, SKT HD CAP M4 X 6.0 | 49 |
| - | 1 | 1 | 1 | 1 | 2119655-5 | APPLICATOR BASIC ASSEMBLY, EF | 46 |
| - | 1 | - | 1 | 1 | 2119369-1 | RAM, AMP STYLE, END FEED | 44 |
| - | 1 | 1 | 1 | 1 | 2079383-7 | SCR, BHSC, RoHS (M8 X 25) | 41 |
| - | 1 | - | 1 | 1 | 2119645-1 | DISC, NUMBERED FA WIRE ADJUSTMENT | 40 |
| - | 1 | - | 1 | 1 | 2119957-1 | APPLICATOR SHIM PACK | 39 |
| - | 1 | 1 | 1 | 1 | 2119644-3 | RAM WASHER, PRECISION | 38 |
| - | 1 | 1 | 1 | 1 | 2119085-1 | FA HEAD, ATLANTIC STYLE | 37 |
| - | 1 | - | 1 | 1 | 2119092-1 | BOLT, ADJUSTMENT | 35 |
| - | 8 | 8 | 8 | 8 | 1-18028-2 | WASHER, FLAT, REG M4 | 33 |
| - | 2 | 2 | 2 | 2 | 2168083-9 | SCR, SKT HD CAP, RoHS, M4 X 20 | 31 |
| - | 2 | 2 | 2 | 2 | 1-2168083-0 | SCR, SKT HD CAP, RoHS, M4 X 10 | 29 |
| - | 1 | 1 | 1 | 1 | 240639-1 | STRIPPER (MACHINING) | 27 |
| - | 2 | 2 | 2 | 2 | 1320906-1 | STUD, THREADED | 25 |
| - | 1 | 1 | 1 | 1 | 1752371-5 | PLATE, STRIP GUIDE | 24 |
| - | 2 | 2 | 2 | 2 | 2-22281-3 | SPRING, COMPRESSION | 22 |
| - | 1 | 1 | 1 | 1 | 1752373-4 | DRAG | 20 |
| - | 1 | 1 | 1 | 1 | 1-1901696-0 | STRIP GUIDE, REAR | 19 |
| - | 1 | 1 | 1 | 1 | 1-1901695-0 | STRIP GUIDE, FRONT | 18 |
| - | 4 | 4 | 4 | 4 | 1-2079383-1 | SCR, BHSC, RoHS (M6 X 12) | 17 |
| - | 1 | 1 | 1 | 1 | 6-240641-7 | SPACER | 16 |
| - | 1 | 1 | 1 | 1 | 1752360-1 | SPACER, HOLD-DOWN | 13 |
| - | 1 | 1 | 1 | 1 | 240644-1 | PLATE, REAR SHEAR | 11 |
| - | - | - | - | - | - | - | 10 |
| - | 1 | 1 | 1 | 1 | 690482-4 | PLATE, FRONT SHEAR | 9 |
| - | 1 | 1 | 1 | 1 | 9-1803000-4 | ANVIL, COMBINATION, END FEED | 8 |
| - | 1 | 1 | 1 | 1 | 1-2217206-2 | BLADE, SLUG | 7 |
| - | - | - | - | - | - | - | 6 |
| - | 1 | 1 | 1 | 1 | 8-240641-5 | SPACER | 5 |
| - | 1 | 1 | 1 | 1 | 3-238009-8 | BLOCK, FL CRIMPER SPACER | 4 |
| - | 1 | 1 | 1 | 1 | 8-1803016-2 | CRIMPER, INSULATION F | 3 |
| - | 1 | 1 | 1 | 1 | 1-455888-0 | SPACER, CRIMPER | 2 |
| - | 1 | 1 | 1 | 1 | 1803241-4 | CRIMPER, WIRE F | 1 |

| DIMENSIONS: | | TOLERANCES UNLESS OTHERWISE SPECIFIED: | | DATE | | NAME | |
|--|---------|--|---------|-----------|---------|--------------|----------|
| mm | 0 PLC ± | 1 PLC ± | 2 PLC ± | 3 PLC ± | 4 PLC ± | 5 PLC ± | ANGLES ± |
| MATERIAL: | | | | FINISH: | | WEIGHT: | |
| Customer Accessible Production Drawing | | | | SCALE 1:1 | | SHEET 1 OF 4 | |

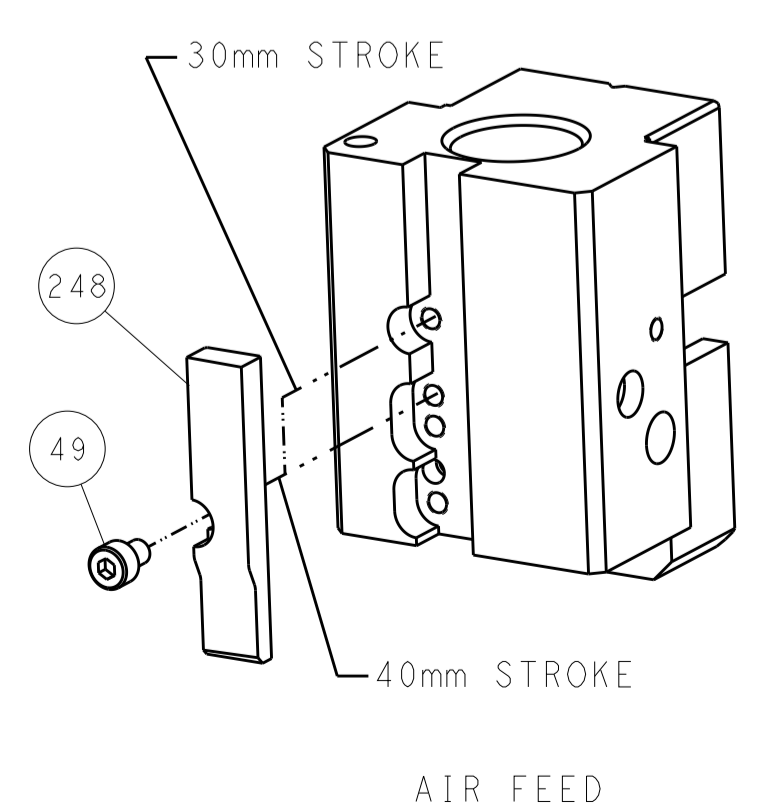
| LOC | | DIST | | REVISIONS | | | |
|-----|----|------|-----|-------------|------|-----|------|
| A | 66 | P | LTM | DESCRIPTION | DATE | OWN | APVD |
| | | - | - | SEE SHEET 1 | | | |



HOLDDOWN SET-UP



CAM POSITION



AIR FEED

ATLANTIC VERSION
 Shown on sheets 1 of 4 & 2 of 4
 (Pacific version shown on sheets 3 of 4 & 4 of 4)

| | | | | | | | |
|-------------|--|--|--|--|--|---------------------------------|--|
| DIMENSIONS: | | TOLERANCES UNLESS OTHERWISE SPECIFIED: | | DWG: J. HOU 31 JUL 2015 | | TE Connectivity | |
| mm | | 0 PLC ± | | CHK: L. ZHANG 31 JUL 2015 | | Harrisburg, PA 17105-3608 | |
| Ø | | 1 PLC ± | | APP'D: H. GUO 31 JUL 2015 | | NAME: Ocean End Feed Applicator | |
| H | | 2 PLC ± | | PRODUCT SPEC: | | SIZE: CAGE CODE: DRAWING NO: | |
| D | | 3 PLC ± | | APPLICATION SPEC: | | RESTRICTED TO: | |
| R | | 4 PLC ± | | WEIGHT: | | A1 00779 ©=2150601 | |
| ANGLES | | FINISH: | | Customer Accessible Production Drawing | | SCALE: 1:1 SHEET 2 OF 4 REV A | |

| PACIFIC VERSION TERMINATOR INTERFACE ADAPTER | PART NUMBER | REVISION | DESCRIPTION | FEED TYPE |
|--|-------------|----------|--------------------------|--------------------------------|
| | 2-2150601-2 | A | FINE CRIMP HEIGHT ADJUST | PNEUMATIC |
| | 2-2150601-5 | A | FINE CRIMP HEIGHT ADJUST | SERVO LATCH PLATE ⁴ |
| | 2-2150601-7 | A | FINE CRIMP HEIGHT ADJUST | NONE |
| | 7-2150601-7 | A | CRIMP TOOLING KIT | - |

| APPLICATOR DATA | | |
|--------------------------------|----------------|------|
| CRIMP | SIZE | TYPE |
| WIRE | 4.32 mm [1.70] | F |
| INSUL | 5.33 mm [2.10] | F |
| APPL INSTRUCTIONS 408-10390 | | |

| TERMINAL DATA: KET TERMINAL | | TE CRIMP SPECIFICATION | |
|------------------------------------|--------------|-----------------------------|--------------|
| TERMINAL NAME: KET TERMINAL | | | |
| WIRE STRIP LENGTH | | INSULATION DIAMETER RANGE | |
| 0.14-0.17 mm [0.006-.007 IN] | | 3.03-4.04 mm [1.19-.159 IN] | |
| TERMINAL APPLICATION SPECIFICATION | NONE | | |
| TERMINALS APPLIED ¹⁰ | | | |
| TE TERMINAL | KET TERMINAL | TE TERMINAL | KET TERMINAL |
| 2113800-1 | ST710262-1 | 2113800-2 | ST710262-2 |

| WIRE SIZE | CRIMP HEIGHT mm [INCH] | CRIMP HEIGHT REFERENCE SETTING ⁹ |
|-----------|-------------------------------|---|
| 12 AWG | 2.83 +/- 0.05 [1.11 +/- .002] | 6.7 |
| 3.00mm2 | 2.78 +/- 0.05 [1.09 +/- .002] | 7.2 |
| 14 AWG | 2.60 +/- 0.05 [1.02 +/- .002] | 9.3 |
| 2.00mm2 | 2.59 +/- 0.05 [1.02 +/- .002] | 9.3 |

- ¹ RECOMMENDED SPARE PARTS
- ² GREASE BEARING SURFACES LIGHTLY
- 3. LUBRICATE DAILY PER THE APPLICATOR INSTRUCTION SHEET SUPPLIED WITH THE APPLICATOR.
- ⁴ APPLICATOR SPECIFIC DATA TO BE ENTERED INTO BLANK MEMORY CHIP AT ASSEMBLY. SEE BELOW FOR PART NUMBER:
PNEUMATIC FEED WITH "SMART APPLICATOR" CONVERSION: 8-2150601-4
SERVO FEED WITH "FINE CRIMP HEIGHT ADJUST": 8-2150601-5
- 5. ADJUSTMENT OF THE STRIPPER MAY BE REQUIRED WHEN MOVING THE APPLICATOR BETWEEN BENCH AND LEADMAKER APPLICATIONS.
- ⁶ APPLY PART NUMBER 1-23419-5 LOCTITE TO THREADS OF ITEMS 62 & 180. APPLY PART NUMBER 2-23419-6 LOCTITE TO THREADS OF ITEM 242.
- ⁷ GREASE THREADS, GROOVE AND O-RING ON ITEMS 139 & 153.
- ⁸ MAGNET, ITEM 166 MUST BE ORIENTED CORRECTLY IN ORDER TO PROPERLY ACTUATE THE COUNTER.
- ⁹ CRIMP HEIGHT REFERENCE SETTING WAS THE SETTING USED WHEN THE APPLICATOR WAS QUALIFIED AT THE FACTORY. ADJUSTMENT MAY BE NECESSARY WHEN RUNNING APPLICATOR IN THE FIELD.
- ¹⁰ TERMINAL PITCH NOT COMPATIBLE WITH MECHANICAL FEED.
- ¹¹ THE RECOMMENDED SET-UP FOR END FEED APPLICATORS IS POST-FEED WITH ITEM 2119653-1. THE APPLICATOR CAN BE CONFIGURED FOR PRE-FEED WITH ITEM 2119652-1 BUT MAY ENCOUNTER PROBLEMS WITH SOME APPLICATIONS. FEED ISSUES OR TERMINAL JAMMING MAY OCCUR IN THE PRE-FEED CONFIGURATION.

***WARNING**
ON INSTALLATION, SET WIRE DISC, ITEM 40 TO LARGEST WIRE SIZE SETTING. USE OF SETTINGS BELOW MINIMUM REQUIRED CRIMP HEIGHT SETTING WILL CAUSE DAMAGE TO CRIMP TOOLING.

| - | 1 | 1 | 1 | 2119782-1 | FINE ADJUST HEAD ASM, PACIFIC STYLE | 251 | |
|---|----|----|----|-----------|-------------------------------------|-------------|---------|
| - | - | - | 1 | 2119640-1 | PUSH ROD, AIR FEED | 250 | |
| - | - | - | 1 | 2079988-1 | BUSHING, LCH5-12, MISUMI | 249 | |
| - | 1 | 1 | 1 | 1-22279-3 | SPRING, COMPRESSION | 246 | |
| - | 77 | 27 | 25 | 22 | PART NO | DESCRIPTION | ITEM NO |

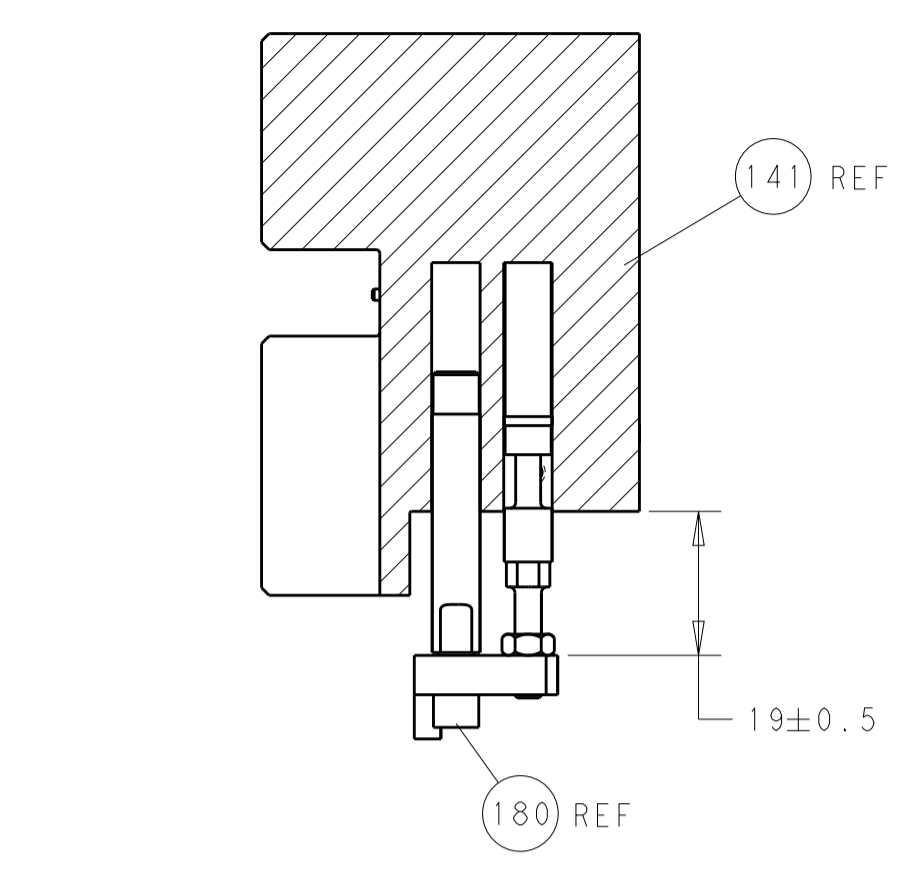
PACIFIC VERSION
Shown on sheets 3 of 4 & 4 of 4
(Atlantic version shown on sheets 1 of 4 & 2 of 4)

| SET UP GAUGE | LOC | DIST | REVISIONS | | | |
|--------------|-----|------|-----------|-------------|----|------|
| 2119599-2 | A | 66 | REV | DATE | BY | APPD |
| | | | - | SEE SHEET 1 | - | - |

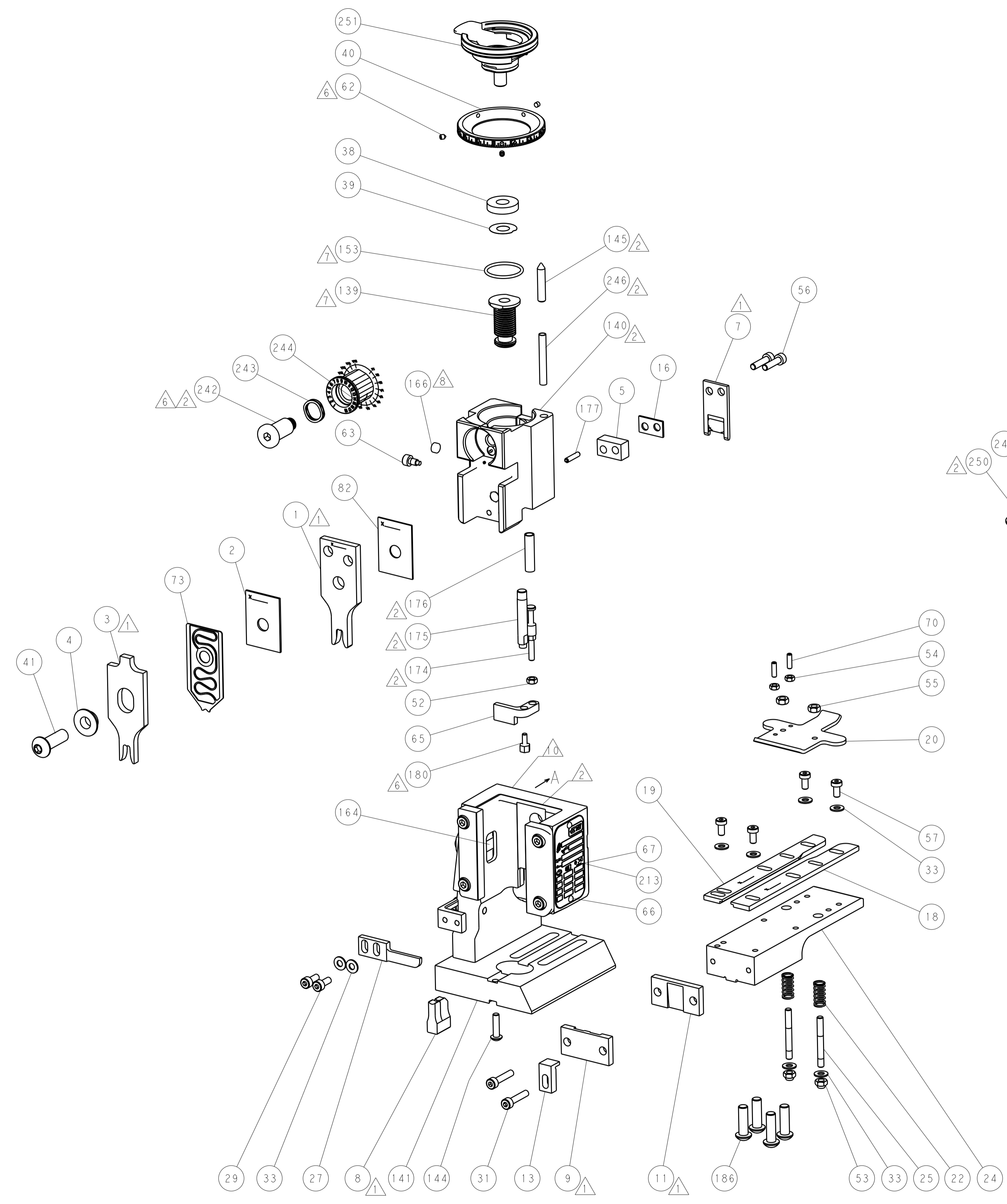
| | | | | | | | |
|---|-----|-----|-----|-------------|-------------------------------------|-------------|---------|
| - | 1 | 1 | 1 | 2119082-3 | CAM, SNAIL, INSULATION ADJUSTMENT | 244 | |
| - | 1 | 1 | 1 | 2079764-1 | WASHER, WAVE SPRING, CREST-TO-CREST | 243 | |
| - | 1 | 1 | 1 | 2119083-1 | RETAINER, INSULATION DIAL | 242 | |
| - | - | 2 | - | 2168400-7 | SHCS, LOW HEAD, RoHS, M5 X 10 | 240 | |
| - | - | - | 1 | 2063440-2 | AIR FEED MODULE | 238 | |
| - | - | 1 | - | 2119740-2 | TAG, IDENTIFICATION | 213 | |
| - | 4 | 4 | 4 | 2079383-9 | SCR, BHSC, RoHS (M6 X 20) | 186 | |
| - | - | REF | - | 1901697-1 | FEED FINGER ASSEMBLY, EF | 183 | |
| - | 1 | 1 | 1 | 1752354-2 | STANDOFF, HOLD-DOWN | 180 | |
| - | 1 | 1 | 1 | 6-993111-6 | PIN, SLOTTED SPRING 3.0 X 14.0 | 177 | |
| - | 1 | 1 | 1 | 8-22280-7 | SPRING, COMPRESSION | 176 | |
| - | 1 | 1 | 1 | 1752353-2 | GUIDE PIN, HOLDDOWN | 175 | |
| - | 1 | 1 | 1 | 1901680-2 | GUIDE PIN, HOLDDOWN | 174 | |
| - | - | - | 2 | 21045-3 | RING, RETAIN, EXTERN, 3/16 CRESCENT | 172 | |
| - | 1 | 1 | 1 | 994969-1 | MAGNET, RARE EARTH HIGH ENERGY | 166 | |
| - | REF | REF | REF | 994970-2 | COUNTER, MAGNETIC | 164 | |
| - | - | - | 1 | 240638-1 | SPRING, FEED FINGER | 163 | |
| - | 1 | 1 | 1 | 8-21084-1 | O-RING, .801 ID, .070 DIA. MAT. | 153 | |
| - | - | - | 1 | 2119641-2 | FEED CAM, AIR FEED | 152 | |
| - | 1 | 1 | 1 | 2119798-2 | DETENT PIN | 145 | |
| - | 1 | 1 | 1 | 2079383-8 | SCR, BHSC, RoHS (M4 X 16) | 144 | |
| - | 1 | 1 | 1 | 2119655-6 | APPLICATOR BASIC ASSEMBLY, EF | 141 | |
| - | 1 | 1 | 1 | 2119651-1 | RAM, ASIAN STYLE, END FEED | 140 | |
| - | 1 | 1 | 1 | 2119092-2 | BOLT, ADJUSTMENT | 139 | |
| - | - | - | 1 | 3-23627-7 | PIN, RETAIN, GRVD, 3/16 X .854 | 137 | |
| - | - | REF | - | SEE NOTE 4 | MEMORY CHIP, PROGRAMMED | 135 | |
| - | - | 1 | - | 1633743-1 | SERVO FEED LATCH ASM | 133 | |
| - | 1 | 1 | 1 | 455888-6 | SPACER, CRIMPER | 82 | |
| - | 1 | 1 | 1 | 2119791-9 | DEPRESSOR, WIRE | 73 | |
| - | 1 | 1 | 1 | 2119956-2 | DOCUMENTATION PACKAGE | 71 | |
| - | 2 | 2 | 2 | 2-18032-2 | SCR, SET, FLT POINT M3 X 10.0 | 70 | |
| - | 1 | - | 1 | 2119740-1 | TAG, IDENTIFICATION | 67 | |
| - | 2 | 2 | 2 | 2168078-1 | SCREW, DRIVE, RH, RoHS, 2 x .188 | 66 | |
| - | 1 | 1 | 1 | 1901681-1 | HOLDDOWN, TERMINAL | 65 | |
| - | 1 | 1 | 1 | 2119793-1 | LIMITER, ADJUSTMENT BOLT | 63 | |
| - | 3 | 3 | 3 | 992763-5 | SCR, SET, SOC, CONE POINT, M3 x 4.0 | 62 | |
| - | - | - | - | 5-18022-5 | SCR, HEX HD CAP, M4 X 6.0 | 59 | |
| - | - | - | - | 2063961-1 | FEED FINGER | 58 | |
| - | 4 | 4 | 4 | 2168400-4 | SHCS, LOW HEAD, RoHS, M4 X 8 | 57 | |
| - | 2 | 2 | 2 | 2168083-8 | SCR, SKT HD CAP, RoHS, M4 X 16 | 56 | |
| - | 2 | 2 | 2 | 5018030-2 | NUT, HEX, REG, RoHS, M4 | 55 | |
| - | 2 | 2 | 2 | 5018030-1 | NUT, HEX, REG, RoHS, M3 | 54 | |
| - | 2 | 2 | 2 | 986965-8 | NUT, LOCK, HEX, TORQUE (M4) | 53 | |
| - | 1 | 1 | 1 | 1-5018030-0 | NUT, HEX, REG, RoHS, M3.5 | 52 | |
| - | - | - | 1 | 2119792-2 | PAWL, EF, AIR | 51 | |
| - | - | - | 1 | 18023-9 | SCR, SKT HD CAP M4 X 6.0 | 49 | |
| - | 1 | 1 | 1 | 2079383-7 | SCR, BHSC, RoHS (M8 X 25) | 41 | |
| - | 1 | 1 | 1 | 2119645-1 | DISC, NUMBERED FA WIRE ADJUSTMENT | 40 | |
| - | 1 | 1 | 1 | 2119957-1 | APPLICATOR SHIM PACK | 39 | |
| - | 1 | 1 | 1 | 2119644-3 | RAM WASHER, PRECISION | 38 | |
| - | 8 | 8 | 8 | 1-18028-2 | WASHER, FLAT, REG M4 | 33 | |
| - | 2 | 2 | 2 | 2168083-9 | SCR, SKT HD CAP, RoHS, M4 X 20 | 31 | |
| - | 2 | 2 | 2 | 1-2168083-0 | SCR, SKT HD CAP, RoHS, M4 X 10 | 29 | |
| - | 1 | 1 | 1 | 240639-1 | STRIPPER (MACHINING) | 27 | |
| - | 2 | 2 | 2 | 1320906-1 | STUD, THREADED | 25 | |
| - | 1 | 1 | 1 | 1752371-5 | PLATE, STRIP GUIDE | 24 | |
| - | 2 | 2 | 2 | 2-22281-3 | SPRING, COMPRESSION | 22 | |
| - | 1 | 1 | 1 | 1752373-4 | DRAG | 20 | |
| - | 1 | 1 | 1 | 1-1901696-0 | STRIP GUIDE, REAR | 19 | |
| - | 1 | 1 | 1 | 1-1901695-0 | STRIP GUIDE, FRONT | 18 | |
| - | 1 | 1 | 1 | 6-240641-7 | SPACER | 16 | |
| - | 1 | 1 | 1 | 1752360-1 | SPACER, HOLD-DOWN | 13 | |
| - | 1 | 1 | 1 | 240644-1 | PLATE, REAR SHEAR | 11 | |
| - | - | - | - | - | - | 10 | |
| - | 1 | 1 | 1 | 690482-4 | PLATE, FRONT SHEAR | 9 | |
| - | 1 | 1 | 1 | 9-1803000-4 | ANVIL, COMBINATION, END FEED | 8 | |
| - | 1 | 1 | 1 | 1-2217206-2 | BLADE, SLUG | 7 | |
| - | - | - | - | - | - | 6 | |
| - | 1 | 1 | 1 | 8-240641-5 | SPACER | 5 | |
| - | 1 | 1 | 1 | 3-238009-8 | BLOCK, FL CRIMPER SPACER | 4 | |
| - | 1 | 1 | 1 | 8-1803016-2 | CRIMPER, INSULATION F | 3 | |
| - | 1 | 1 | 1 | 1-455888-0 | SPACER, CRIMPER | 2 | |
| - | 1 | 1 | 1 | 1803241-4 | CRIMPER, WIRE F | 1 | |
| - | 77 | 27 | 25 | 22 | PART NO | DESCRIPTION | ITEM NO |

| | | | | | |
|----------------|--|---|--|--|--|
| DIMENSIONS: mm | | TOLERANCES UNLESS OTHERWISE SPECIFIED: | | OWN: J. HOU 31 JUL 2015 | TE Connectivity Harrisburg, PA 17105-3608 |
| | | 0 PLC ± 1 PLC ± 2 PLC ± 3 PLC ± 4 PLC ± ANGLES ± | | CHK: L. ZHANG 31 JUL 2015 | |
| MATERIAL: | | FINISH: | | APPD: H. GUO 31 JUL 2015 | NAME: Ocean End Feed Applicator |
| | | | | PRODUCT SPEC: | SIZE: A |
| | | | | APPLICATION SPEC: | CAGE CODE: 00779 |
| | | | | WEIGHT: | DRAWING NO: 2150601 |
| | | | | RESTRICTED TO: | SCALE: 1:1 |
| | | | | Customer Accessible Production Drawing | SHEET 3 OF 4 |

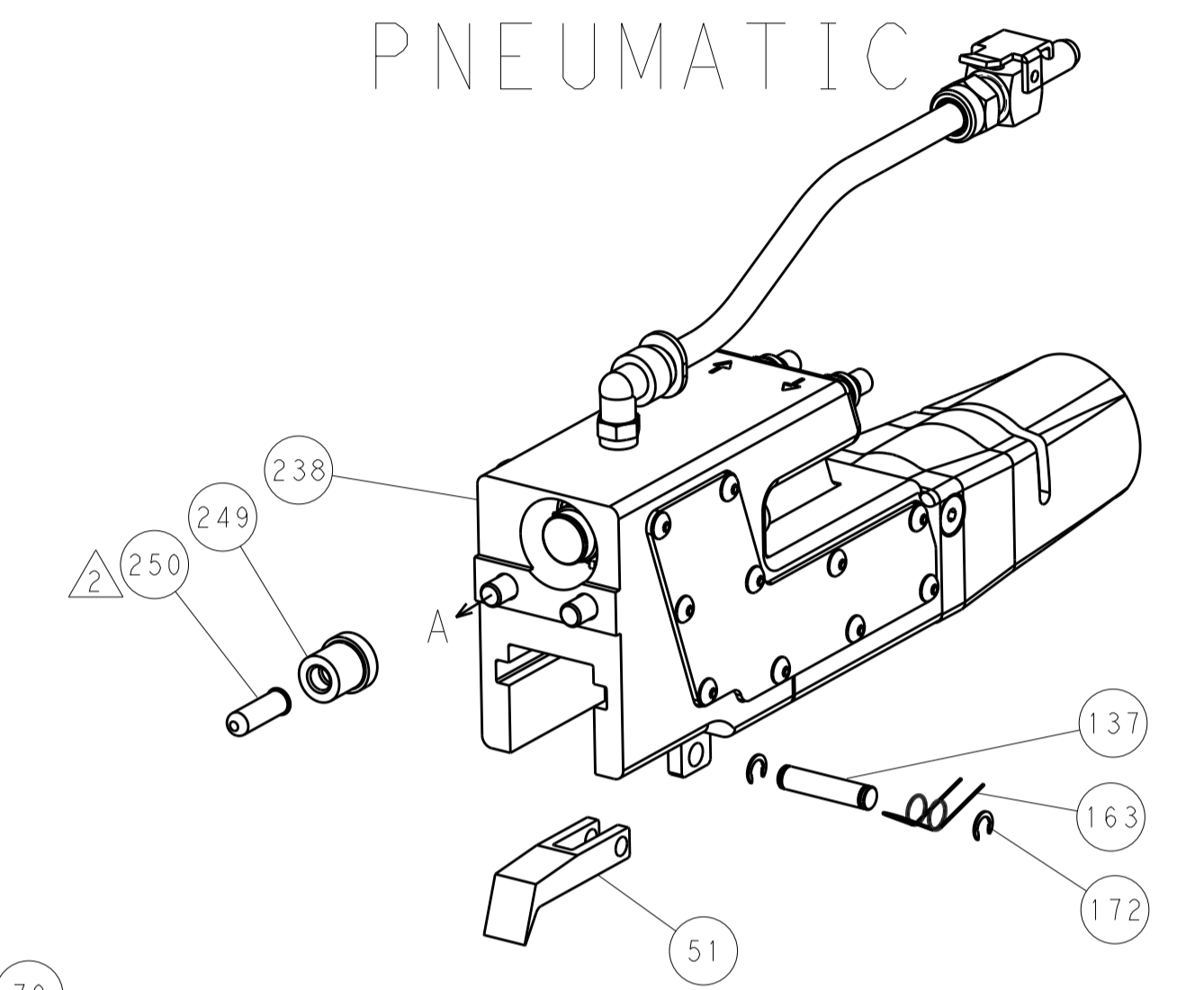
| LOC | | DIST | | REVISIONS | | | |
|-----|----|------|-----|-------------|------|-----|------|
| A | 66 | P | LTH | DESCRIPTION | DATE | DWN | APVD |
| | | - | | SEE SHEET 1 | | | |



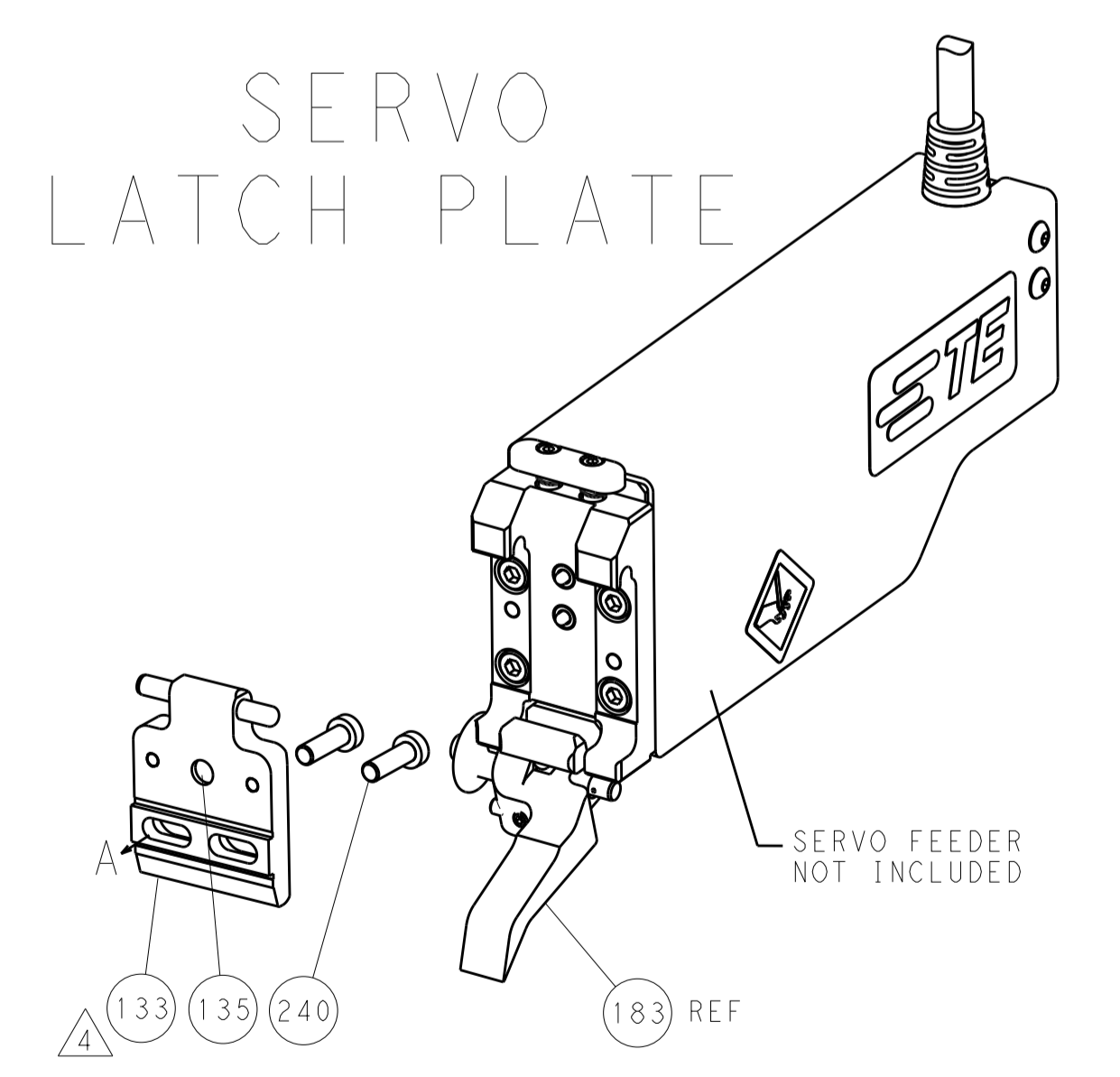
HOLDDOWN SET-UP



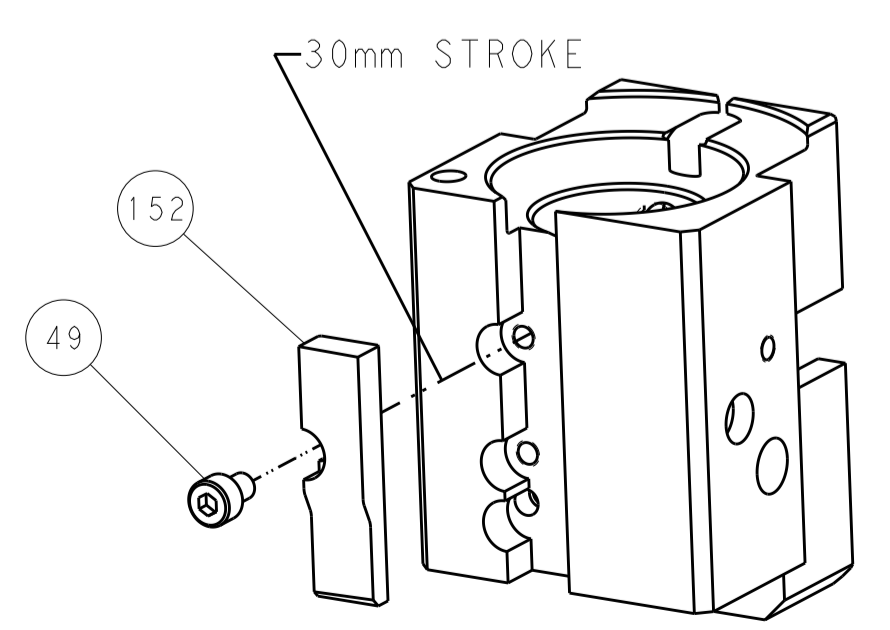
FEED TYPE
PNEUMATIC



SERVO
LATCH PLATE



CAM POSITION



AIR FEED

PACIFIC VERSION
Shown on sheets 3 of 4 & 4 of 4
(Atlantic version shown on sheets 1 of 4 & 2 of 4)

| | | | | | | | | | | | |
|--|---------|--|---------|-------------------------|---------|---------------------------|----------|--------------------------|--------|------------------------------|--------------|
| DIMENSIONS: | | TOLERANCES UNLESS OTHERWISE SPECIFIED: | | DWN: J. HOU 31 JUL 2015 | | CHK: L. ZHANG 31 JUL 2015 | | APVD: H. GUO 31 JUL 2015 | | NAME: Ocean End Feed Applier | |
| mm | 0 PLC ± | 1 PLC ± | 2 PLC ± | 3 PLC ± | 4 PLC ± | ANGLES ± | MATERIAL | FINISH | WEIGHT | SCALE: 1:1 | SHEET 4 OF 4 |
| Customer Accessible Production Drawing | | | | | | | | | | RESTRICTED TO: A | |