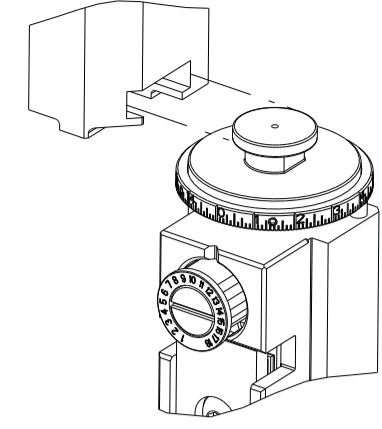


| PART NUMBER | REVISION | DESCRIPTION | FEED TYPE |
|-------------|----------|----------------------------------|------------|
| 2150569-1 | B | FINE CRIMP HEIGHT ADJUST | MECHANICAL |
| 2150569-2 | B | FINE CRIMP HEIGHT ADJUST | PNEUMATIC |
| 7-2150569-1 | B | MECHANICAL AND CRIMP TOOLING KIT | MECHANICAL |
| 7-2150569-2 | B | PNEUMATIC AND CRIMP TOOLING KIT | PNEUMATIC |
| 7-2150569-7 | A | CRIMP TOOLING KIT | - |

ATLANTIC VERSION TERMINATOR INTERFACE ADAPTER



| APPLICATOR DATA | | |
|--------------------------------|----------------|------|
| CRIMP | SIZE | TYPE |
| WIRE | 1.78 mm [.070] | F |
| INSUL | - | - |
| APPL INSTRUCTIONS 408-35043 | | |

| TERMINAL DATA: GH/LEAR TERMINAL TE CRIMP SPECIFICATION | | | |
|--------------------------------------------------------|------------------|---------------------------|------------------|
| TERMINAL NAME: RECEPTACLE | | | |
| WIRE STRIP LENGTH | | INSULATION DIAMETER RANGE | |
| 2.95-3.33 mm [.116-.131 IN] | | ∅ - | |
| TERMINAL APPLICATION SPECIFICATION | NONE | - | - |
| TERMINALS APPLIED | | | |
| TE TERMINAL | GH/LEAR TERMINAL | TE TERMINAL | GH/LEAR TERMINAL |
| 2113695-1 | 25474.123.211 | | |
| 2113695-2 | 25157.213.011 | | |

| WIRE SIZE | CRIMP HEIGHT mm [INCH] | CRIMP HEIGHT REFERENCE SETTING |
|-----------|-------------------------------|--------------------------------|
| 1.00mm2 | 1.38 +/- 0.05 [.054 +/- .002] | 7.1 |
| 0.75mm2 | 1.26 +/- 0.05 [.050 +/- .002] | 8.3 |
| 0.50mm2 | 1.10 +/- 0.05 [.043 +/- .002] | 9.9 |

- RECOMMENDED SPARE PARTS
- REFER TO SUPPLIED INSTRUCTION SHEET FOR CLEANING, LUBRICATION AND STORAGE OF APPLICATOR.
- CRIMP HEIGHT REFERENCE SETTING WAS THE SETTING USED WHEN THE APPLICATOR WAS QUALIFIED AT THE FACTORY. ADJUSTMENT MAY BE NECESSARY WHEN RUNNING APPLICATOR IN THE FIELD.
- UNLESS SPECIFIED OTHERWISE TORQUE VALUES SHALL BE USED PER DOCUMENT, 101-35000.

***WARNING**
ON INSTALLATION, SET WIRE DISC TO CRIMP HEIGHT REFERENCE SETTING FOR LARGEST WIRE SIZE. CRIMP HEIGHT REFERENCE SETTINGS GREATER THAN THE VALUE SHOWN MAY CAUSE DAMAGE TO THE CRIMP TOOLING. REFER TO THE INSTRUCTION SHEET FOR PROPER SETUP AND ADJUSTMENTS.

ATLANTIC VERSION
Shown on sheets 1 of 4 & 2 of 4
(Pacific version shown on sheets 3 of 4 & 4 of 4)

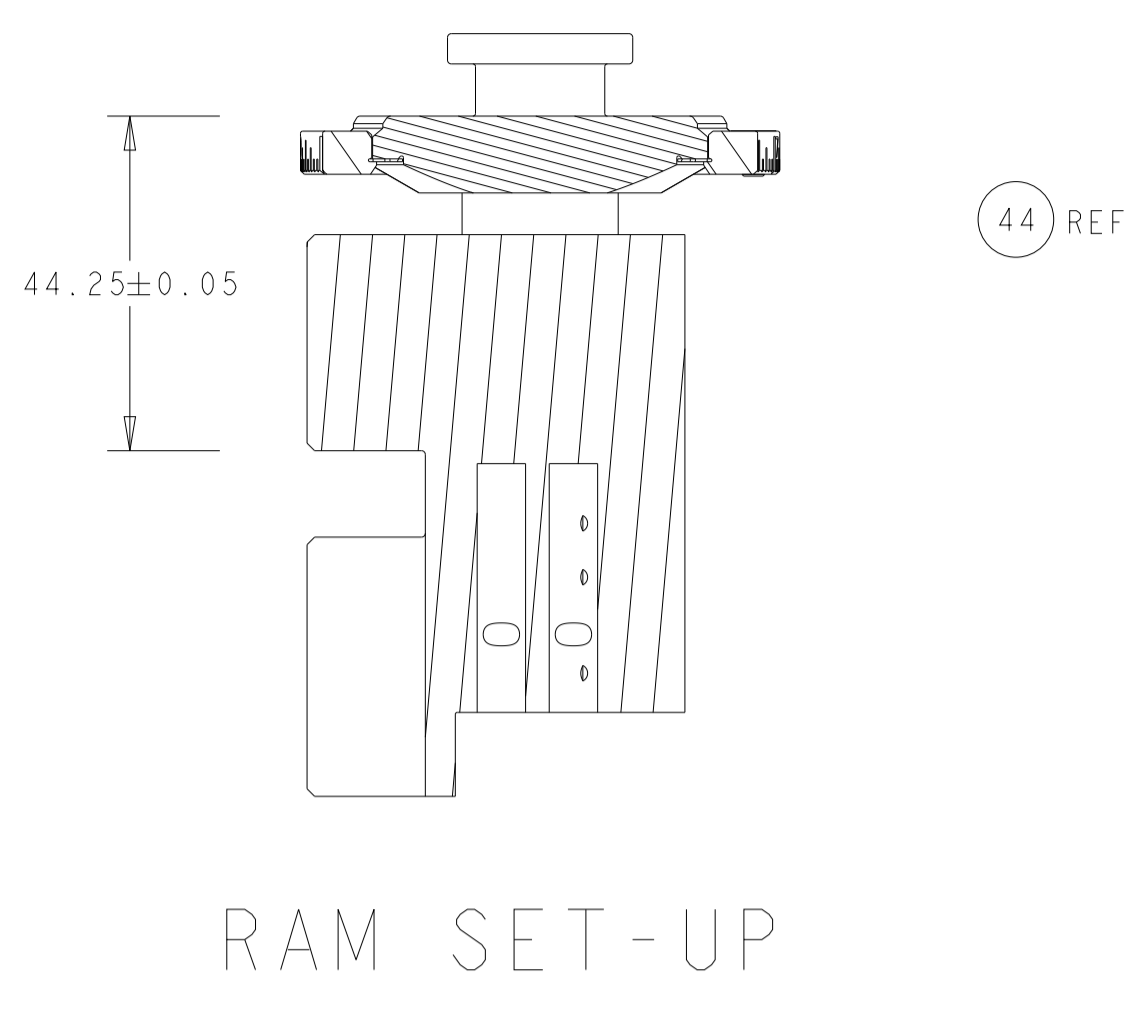
| LOC | DIST | REVISIONS | | | | | |
|-----|------|-----------|-----|---------------|-----------|-----|------|
| A | 66 | P | LTM | DESCRIPTION | DATE | DWN | APVD |
| | | A | | RELEASED | 29MAY2015 | MR | GB |
| | | A1 | | ECR-18-017400 | 07NOV2018 | FL | CT |
| | | B | | ECR-22-137263 | 28APR2022 | JWC | ROY |

| | | | | | | | | |
|---|-----|-----|-----|-----|-------------|----------------------------------|-----------------------|---|
| - | 1 | - | 1 | - | 2119641-1 | FEED CAM, AIR FEED | 248 | |
| - | - | 1 | - | 1 | 2119580-1 | MECHANICAL FEED ASSEMBLY | 239 | |
| - | 1 | - | 1 | - | 2844940-3 | AIR FEED MODULE | 238 | |
| - | 1 | 1 | 1 | 1 | 1-18028-0 | WASHER, FLAT, REG M8 | 192 | |
| - | 2 | 2 | 2 | 2 | 1-2168083-1 | SCR, SKT HD CAP, RoHS, M3 X 6 | 191 | |
| - | REF | REF | REF | REF | 994970-2 | COUNTER, MAGNETIC | 164 | |
| - | 1 | 1 | 1 | 1 | 455888-5 | SPACER, CRIMPER | 82 | |
| - | 1 | 1 | 1 | 1 | 1803607-4 | DOCUMENTATION PACKAGE | 71 | |
| - | 2 | 2 | 2 | 2 | 2-18032-2 | SCR, SET, FLT PNT, M3 X 10.0 | 70 | |
| - | 1 | 1 | 1 | 1 | 2119740-1 | TAG, IDENTIFICATION | 67 | |
| - | 2 | 2 | 2 | 2 | 2168078-1 | SCREW, DRIVE, RH, RoHS, 2 x .188 | 66 | |
| - | 1 | 1 | 1 | 1 | 2168083-2 | SCR, SKT HD CAP, RoHS, M4 X 8.0 | 60 | |
| - | 1 | 1 | 1 | 1 | 5-18022-5 | SCR, HEX HD CAP, M4 X 6.0 | 59 | |
| - | - | 1 | - | 1 | 2063961-6 | FEED FINGER | 58 | |
| - | 4 | 4 | 4 | 4 | 2168400-4 | SHCS, LOW HEAD, RoHS, M4 X 8 | 57 | |
| - | 2 | 2 | 2 | 2 | 2168083-3 | SCR, SKT HD CAP, RoHS, M4 X 12.0 | 56 | |
| - | 2 | 2 | 2 | 2 | 5018030-1 | NUT, HEX, REG, RoHS, M3 | 54 | |
| - | 2 | 2 | 2 | 2 | 986965-8 | NUT, LOCK, HEX, TORQUE (M4) | 53 | |
| - | 1 | - | 1 | - | 1-2063961-2 | FEED FINGER | 51 | |
| - | 1 | 2 | 1 | 2 | 18023-9 | SCR, SKT HD CAP M4 X 6.0 | 49 | |
| - | - | 1 | - | 1 | 2119652-1 | FEED CAM, PRE FEED | 48 | |
| - | - | 1 | - | 1 | 2119653-1 | FEED CAM, POST FEED | 47 | |
| - | 1 | 1 | 1 | 1 | 2119655-5 | APPLICATOR BASIC ASSEMBLY, EF | 46 | |
| - | 1 | 1 | 1 | 1 | 1803517-1 | RAM ASSEMBLY, EF ATLANTIC | 44 | |
| - | 1 | 1 | 1 | 1 | 1803602-1 | SCR, BHSC, RoHS (M8 X 25) | 41 | |
| - | 8 | 8 | 8 | 8 | 1-18028-2 | WASHER, FLAT, REG M4 | 33 | |
| - | 2 | 2 | 2 | 2 | 2168083-9 | SCR, SKT HD CAP, RoHS, M4 X 20 | 31 | |
| - | 2 | 2 | 2 | 2 | 1-2168083-0 | SCR, SKT HD CAP, RoHS, M4 X 10 | 29 | |
| - | 1 | 1 | 1 | 1 | 240639-1 | STRIPPER (MACHINING) | 27 | |
| - | 2 | 2 | 2 | 2 | 1-2168083-6 | SCR, SKT HD CAP, RoHS, M4 X 35 | 25 | |
| - | 1 | 1 | 1 | 1 | 1752371-5 | PLATE, STRIP GUIDE | 24 | |
| - | 2 | 2 | 2 | 2 | 22281-8 | SPRING, COMPRESSION | 22 | |
| - | 1 | 1 | 1 | 1 | 1633168-1 | ARM, STOCK DRAG | 21 | |
| - | 1 | 1 | 1 | 1 | 464452-2 | DRAG, STOCK | 20 | |
| - | 1 | 1 | 1 | 1 | 1-1901696-5 | STRIP GUIDE, REAR | 19 | |
| - | 1 | 1 | 1 | 1 | 1901259-6 | GUIDE, LOWER STRIP | 18 | |
| - | 4 | 4 | 4 | 4 | 1-2079383-1 | SCR, BHSC, RoHS (M6 X 12) | 17 | |
| - | 1 | 1 | 1 | 1 | 240644-5 | PLATE, REAR SHEAR | 11 | |
| - | 2 | 2 | 2 | 2 | 2-240645-6 | SPACER, SHEAR PLATE | 10 | |
| - | 1 | 1 | 1 | 1 | 240642-2 | PLATE, FRONT SHEAR | 9 | |
| - | 1 | 2 | 2 | 1 | 1-1803002-1 | ANVIL, COMBINATION, END FEED | 8 | |
| - | 1 | 1 | 1 | 1 | 1633797-3 | BLADE, SLUG | 7 | |
| - | - | - | - | - | - | - | 6 | |
| - | 1 | 1 | 1 | 1 | 4-240641-2 | SPACER | 5 | |
| - | - | - | - | - | - | - | 4 | |
| - | - | - | - | - | - | - | 3 | |
| - | - | - | - | - | - | - | 2 | |
| - | 1 | 2 | 2 | 1 | 1 | 2-456404-5 | CRIMPER, WIRE PREMIUM | 1 |

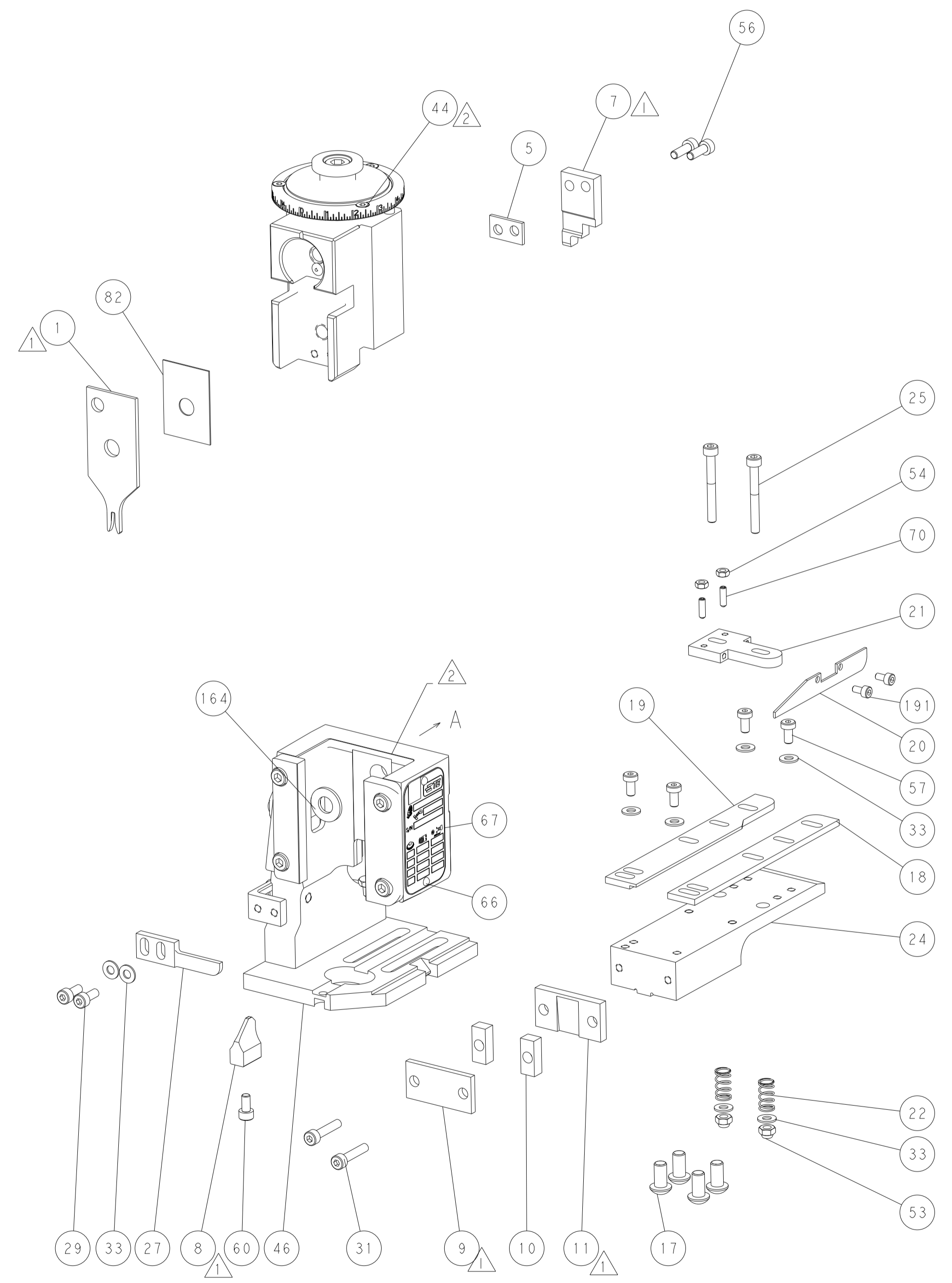
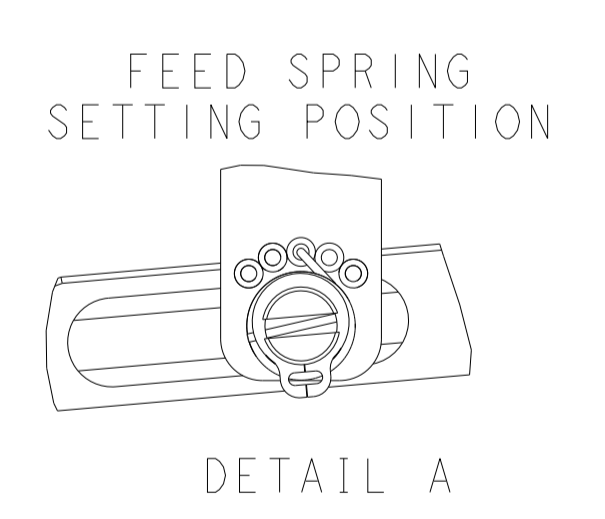
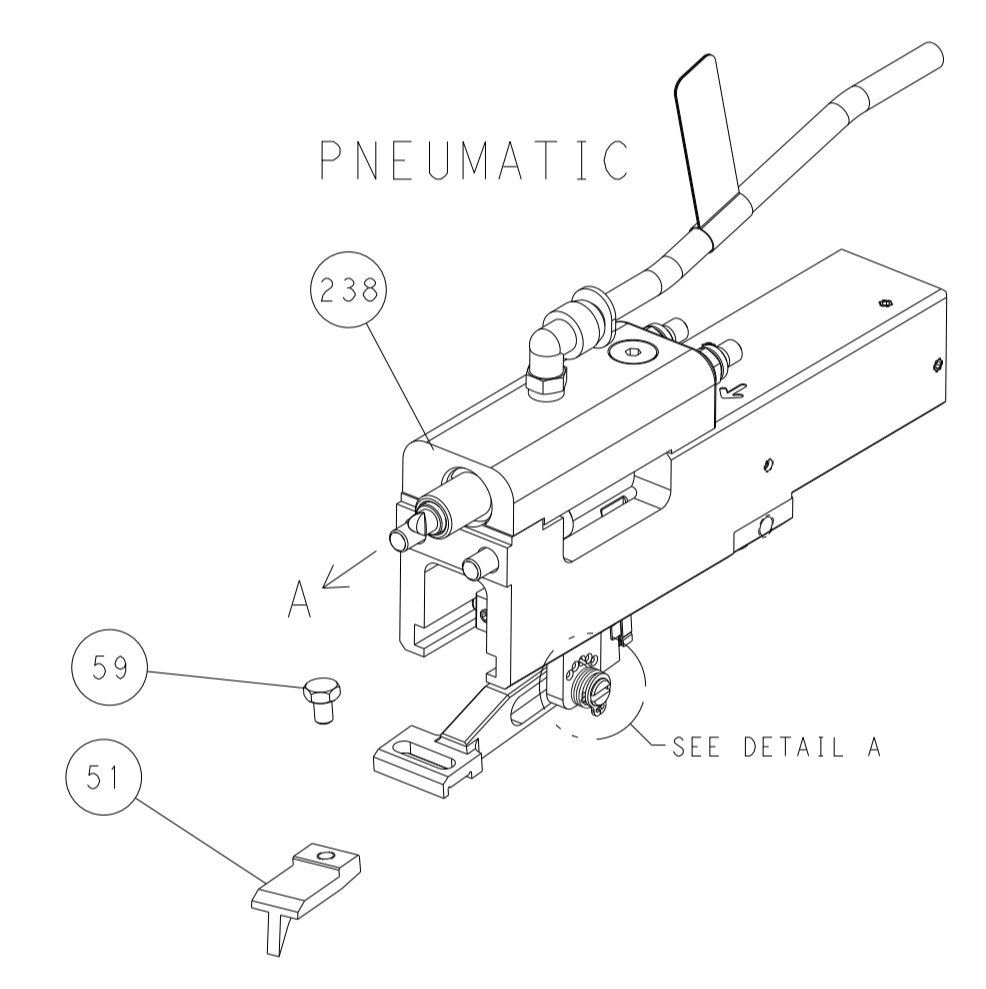
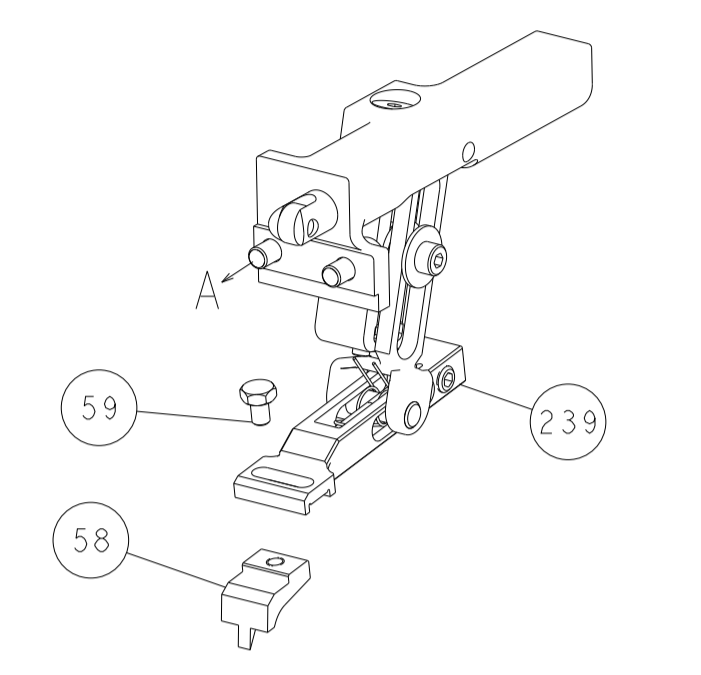
- 1
- 1
- 1
- 1

| DIMENSIONS: | | TOLERANCES UNLESS OTHERWISE SPECIFIED: | | MATERIAL: | |
|-------------------|----------------|----------------------------------------|-----------|-------------------|-----------|
| mm | 0 PLC ± | 1 PLC ± | 2 PLC ± | 3 PLC ± | 4 PLC ± |
| | ANGLES ± | FINISH ± | | | |
| APPLICATOR DATA | | APPLICATOR DATA | | APPLICATOR DATA | |
| WIRE SIZE | 1.78 mm [.070] | CRIMP TYPE | F | INSULATION | - |
| APPL INSTRUCTIONS | 408-35043 | APPL INSTRUCTIONS | 408-35043 | APPL INSTRUCTIONS | 408-35043 |
| SCALE | 1:1 | SHEET | 1 OF 4 | REV | B |

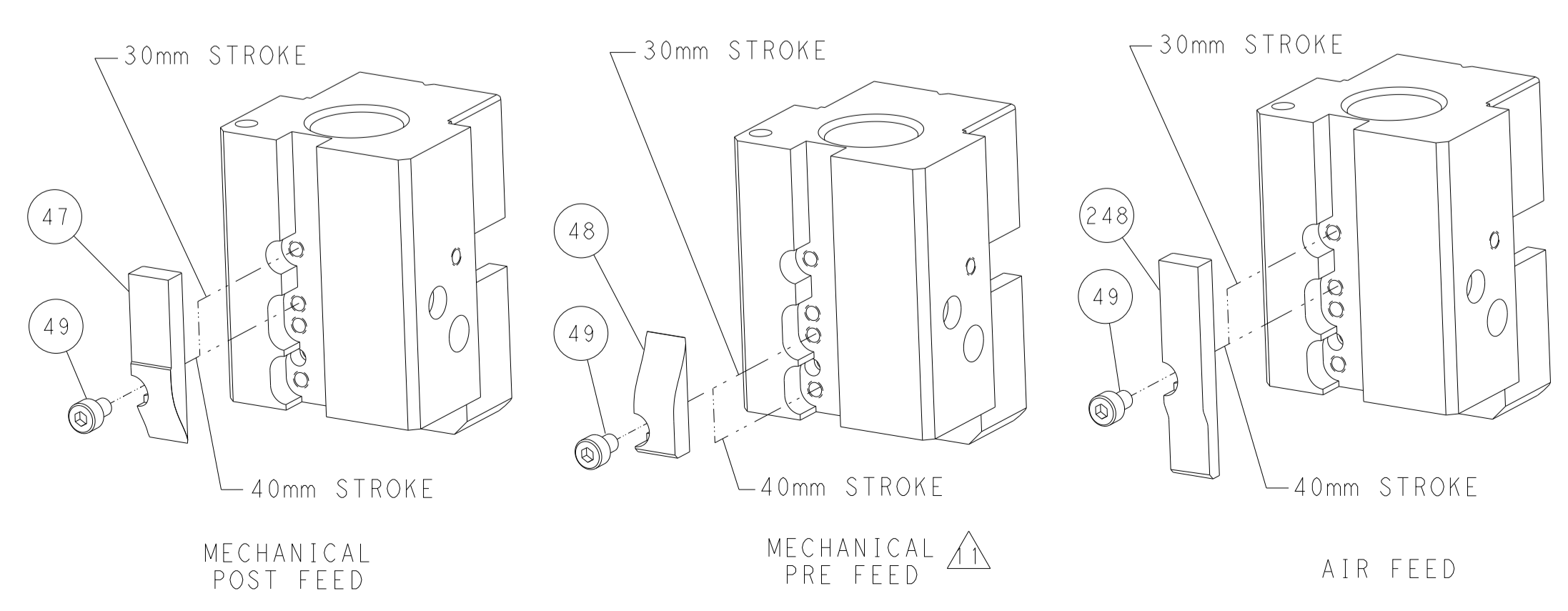
| LOC | DIST | REVISIONS | | | | | |
|-----|------|-----------|-----|-------------|------|-----|------|
| | | P | LTN | DESCRIPTION | DATE | DNW | APVD |
| A | 66 | - | - | SEE SHEET 1 | - | - | - |



FEED TYPE MECHANICAL



CAM POSITIONS



ATLANTIC VERSION
Shown on sheets 1 of 4 & 2 of 4
(Pacific version shown on sheets 3 of 4 & 4 of 4)

| DIMENSIONS: | | TOLERANCES UNLESS OTHERWISE SPECIFIED: | | MATERIAL: | | FINISH: | | WEIGHT: | | SCALE: | | SHEET: | | REV: | |
|-------------|--------|----------------------------------------|--|-----------|--|---------|--|---------|--|--------|---|--------|---|------|--|
| mm | 0 PLC | ± | | | | | | | | 1:1 | 2 | of | 4 | B | |
| | 1 PLC | ± | | | | | | | | | | | | | |
| | 2 PLC | ± | | | | | | | | | | | | | |
| | 3 PLC | ± | | | | | | | | | | | | | |
| | 4 PLC | ± | | | | | | | | | | | | | |
| | ANGLES | ± | | | | | | | | | | | | | |
| | FINISH | ± | | | | | | | | | | | | | |



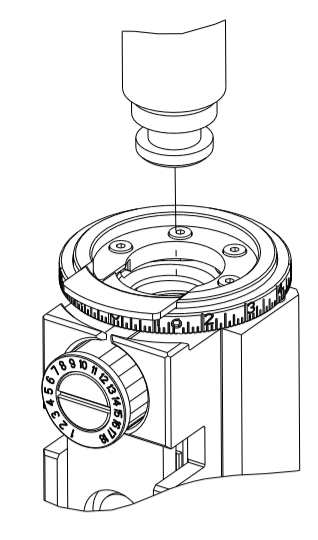
NAME: Ocean End Feed Applicator

SIZE: A1 CAGE CODE: 00779 DRAWING NO: 2150569

Customer Accessible Production Drawing

| PART NUMBER | REVISION | DESCRIPTION | FEED TYPE |
|-------------|----------|--------------------------|------------|
| 2-2150569-1 | B | FINE CRIMP HEIGHT ADJUST | MECHANICAL |
| 2-2150569-2 | B | FINE CRIMP HEIGHT ADJUST | PNEUMATIC |
| 7-2150569-7 | A | CRIMP TOOLING KIT | - |

PACIFIC VERSION TERMINATOR
 INTERFACE ADAPTER



APPLICATOR DATA

| CRIMP | SIZE | TYPE |
|-------|----------------|------|
| WIRE | 1.78 mm [.070] | F |
| INSUL | - | F |

APPL INSTRUCTIONS
 408-35043

TERMINAL DATA: GH/LEAR TERMINAL TE CRIMP SPECIFICATION

| TERMINAL NAME | RECEPTACLE |
|-----------------------------|---------------------------|
| WIRE STRIP LENGTH | INSULATION DIAMETER RANGE |
| 2.95-3.33 mm [.116-.131 IN] | ∅ - |

TERMINAL APPLICATION SPECIFICATION

| TERMINALS APPLIED | | | |
|-------------------|------------------|-------------|------------------|
| TE TERMINAL | GH/LEAR TERMINAL | TE TERMINAL | GH/LEAR TERMINAL |
| 2113695-1 | 25474.123.211 | | |
| 2113695-2 | 25157.213.011 | | |

| WIRE SIZE | CRIMP HEIGHT mm [INCH] | CRIMP HEIGHT REFERENCE SETTING |
|-----------|----------------------------|--------------------------------|
| 1.00mm2 | 1.38+/-0.05 [.054+/-0.002] | 7.1 |
| 0.75mm2 | 1.26+/-0.05 [.050+/-0.002] | 8.3 |
| 0.50mm2 | 1.10+/-0.05 [.043+/-0.002] | 9.9 |



- RECOMMENDED SPARE PARTS
- REFER TO SUPPLIED INSTRUCTION SHEET FOR CLEANING, LUBRICATION AND STORAGE OF APPLICATOR.
- CRIMP HEIGHT REFERENCE SETTING WAS THE SETTING USED WHEN THE APPLICATOR WAS QUALIFIED AT THE FACTORY. ADJUSTMENT MAY BE NECESSARY WHEN RUNNING APPLICATOR IN THE FIELD.
- UNLESS SPECIFIED OTHERWISE TORQUE VALUES SHALL BE USED PER DOCUMENT, 101-35000.

***WARNING**
 ON INSTALLATION, SET WIRE DISC TO CRIMP HEIGHT REFERENCE SETTING FOR LARGEST WIRE SIZE.
 CRIMP HEIGHT REFERENCE SETTINGS GREATER THAN THE VALUE SHOWN MAY CAUSE DAMAGE TO
 THE CRIMP TOOLING. REFER TO THE INSTRUCTION SHEET FOR PROPER SETUP AND ADJUSTMENTS.

PACIFIC VERSION
 Shown on sheets 3 of 4 & 4 of 4
 (Atlantic version shown on sheets 1 of 4 & 2 of 4)

| LOC | DIST | REV | DATE | BY | CHKD | APPVD |
|-----|------|-----|------|----|------|-------|
| A | 66 | - | - | - | - | - |

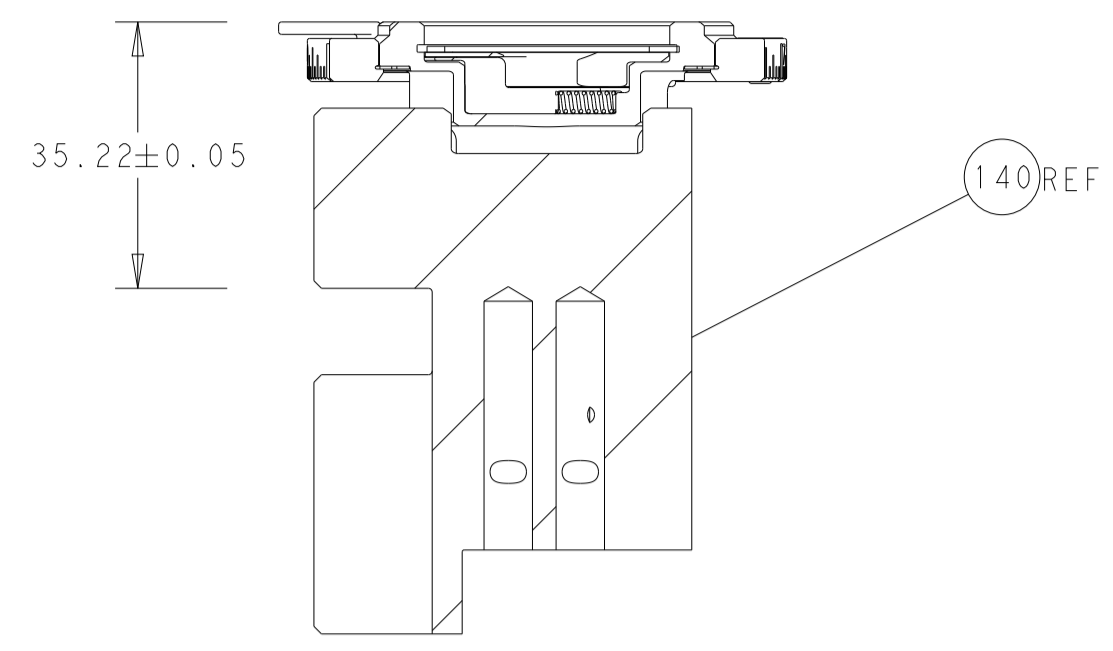
REVISIONS

| REV | DATE | BY | CHKD | APPVD | DESCRIPTION |
|-----|------|----|------|-------|-------------|
| - | - | - | - | - | SEE SHEET 1 |

| | | | | | | |
|---|-----|-----|-------------|----------------------------------|-----------------------|---|
| - | - | 1 | 2119580-1 | MECHANICAL FEED ASSEMBLY | 239 | |
| - | 1 | - | 2844940-3 | AIR FEED MODULE | 238 | |
| - | 1 | 1 | 1-18028-0 | WASHER, FLAT, REG M8 | 192 | |
| - | 2 | 2 | 1-2168083-1 | SCR, SKT HD CAP, RoHS, M3 X 6 | 191 | |
| - | 4 | 4 | 2079383-9 | SCR, BHSC, RoHS (M6 X 20) | 186 | |
| - | REF | REF | 994970-2 | COUNTER, MAGNETIC | 164 | |
| - | 1 | - | 2119641-2 | FEED CAM, AIR FEED | 152 | |
| - | 1 | 1 | 2168083-8 | SCR, SKT HD CAP, RoHS, M4 X 16 | 144 | |
| - | - | 1 | 2119653-2 | FEED CAM, POST FEED | 142 | |
| - | 1 | 1 | 2119655-6 | APPLICATOR BASIC ASSEMBLY, EF | 141 | |
| - | 1 | 1 | 1803518-1 | RAM ASSEMBLY, EF PACIFIC | 140 | |
| - | 1 | 1 | 455888-5 | SPACER, CRIMPER | 82 | |
| - | 1 | 1 | 1803607-4 | DOCUMENTATION PACKAGE | 71 | |
| - | 2 | 2 | 2-18032-2 | SCR, SET, FLT PNT, M3 X 10.0 | 70 | |
| - | 1 | 1 | 2119740-1 | TAG, IDENTIFICATION | 67 | |
| - | 2 | 2 | 2168078-1 | SCREW, DRIVE, RH, RoHS, 2 x .188 | 66 | |
| - | 1 | 1 | 5-18022-5 | SCR, HEX HD CAP, M4 X 6.0 | 59 | |
| - | - | 1 | 2063961-6 | FEED FINGER | 58 | |
| - | 4 | 4 | 2168400-4 | SHCS, LOW HEAD, RoHS, M4 X 8 | 57 | |
| - | 2 | 2 | 2168083-3 | SCR, SKT HD CAP, RoHS, M4 X 12.0 | 56 | |
| - | 2 | 2 | 5018030-1 | NUT, HEX, REG, RoHS, M3 | 54 | |
| - | 2 | 2 | 986965-8 | NUT, LOCK, HEX, TORQUE (M4) | 53 | |
| - | 1 | - | 1-2063961-2 | FEED FINGER | 51 | |
| - | 1 | 2 | 18023-9 | SCR, SKT HD CAP M4 X 6.0 | 49 | |
| - | - | 1 | 2119652-1 | FEED CAM, PRE FEED | 48 | |
| - | 1 | 1 | 1803602-1 | SCR, BHSC, RoHS (M8 X 25) | 41 | |
| - | 8 | 8 | 1-18028-2 | WASHER, FLAT, REG M4 | 33 | |
| - | 2 | 2 | 2168083-9 | SCR, SKT HD CAP, RoHS, M4 X 20 | 31 | |
| - | 2 | 2 | 1-2168083-0 | SCR, SKT HD CAP, RoHS, M4 X 10 | 29 | |
| - | 1 | 1 | 240639-1 | STRIPPER (MACHINING) | 27 | |
| - | 2 | 2 | 1-2168083-6 | SCR, SKT HD CAP, RoHS, M4 X 35 | 25 | |
| - | 1 | 1 | 1752371-5 | PLATE, STRIP GUIDE | 24 | |
| - | 2 | 2 | 22281-8 | SPRING, COMPRESSION | 22 | |
| - | 1 | 1 | 1633168-1 | ARM, STOCK DRAG | 21 | |
| - | 1 | 1 | 464452-2 | DRAG, STOCK | 20 | |
| - | 1 | 1 | 1-1901696-5 | STRIP GUIDE, REAR | 19 | |
| - | 1 | 1 | 1901259-6 | GUIDE, LOWER STRIP | 18 | |
| - | 1 | 1 | 240644-5 | PLATE, REAR SHEAR | 11 | |
| - | 2 | 2 | 2-240645-6 | SPACER, SHEAR PLATE | 10 | |
| - | 1 | 1 | 240642-2 | PLATE, FRONT SHEAR | 9 | |
| - | 1 | 1 | 1-1803002-1 | ANVIL, COMBINATION, END FEED | 8 | |
| - | 1 | 1 | 1633797-3 | BLADE, SLUG | 7 | |
| - | - | - | - | - | 6 | |
| - | 1 | 1 | 4-240641-2 | SPACER | 5 | |
| - | - | - | - | - | 4 | |
| - | - | - | - | - | 3 | |
| - | - | - | - | - | 2 | |
| - | 1 | 1 | 1 | 2-456404-5 | CRIMPER, WIRE PREMIUM | 1 |

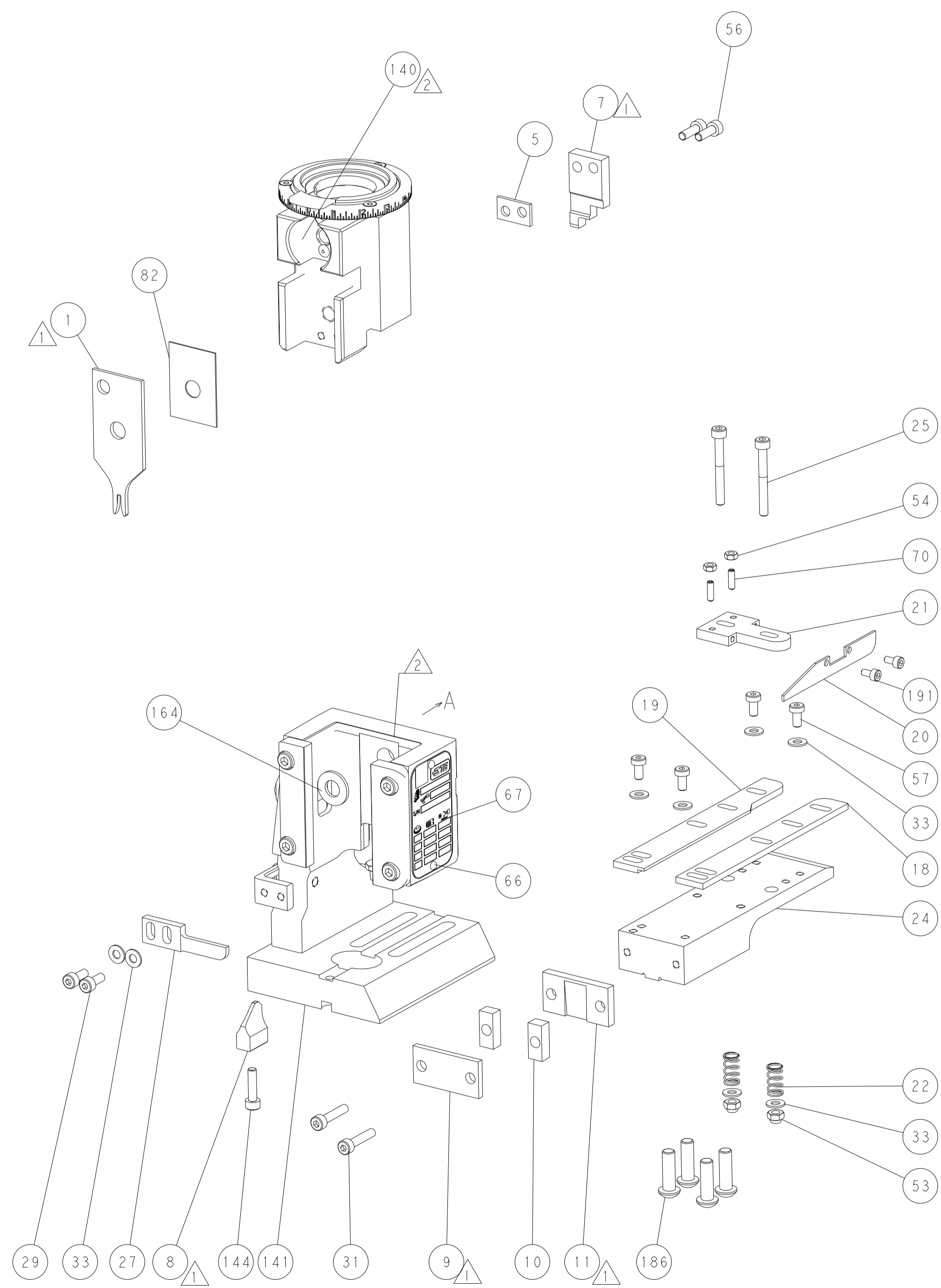
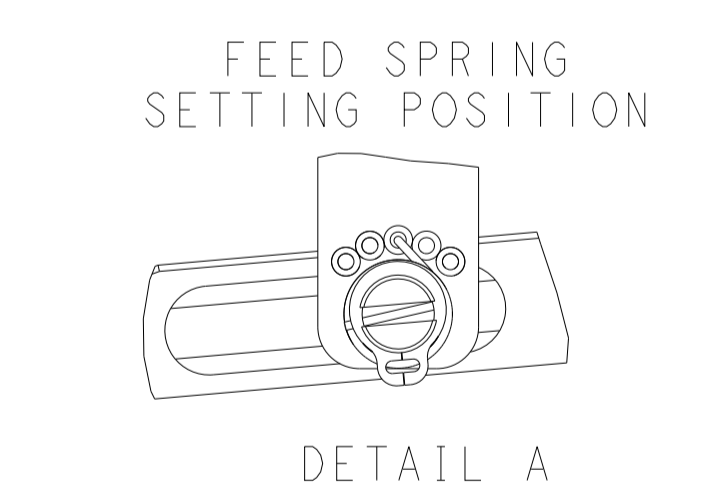
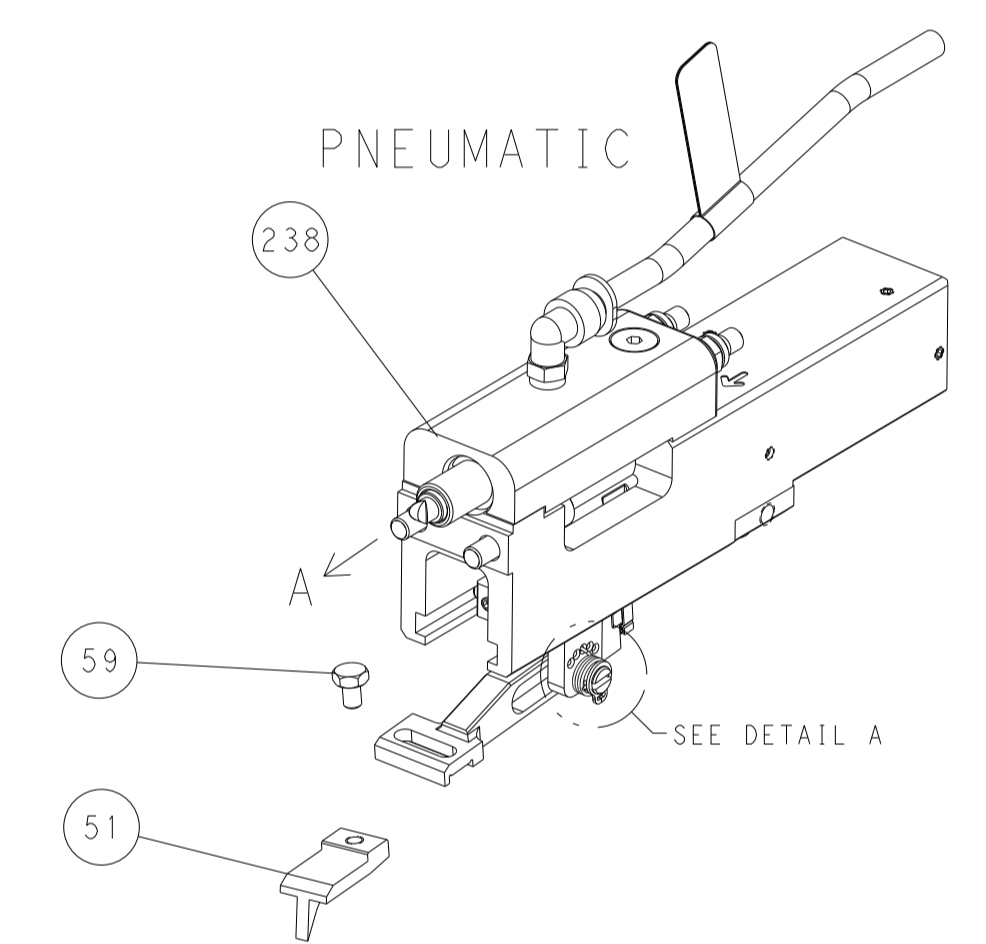
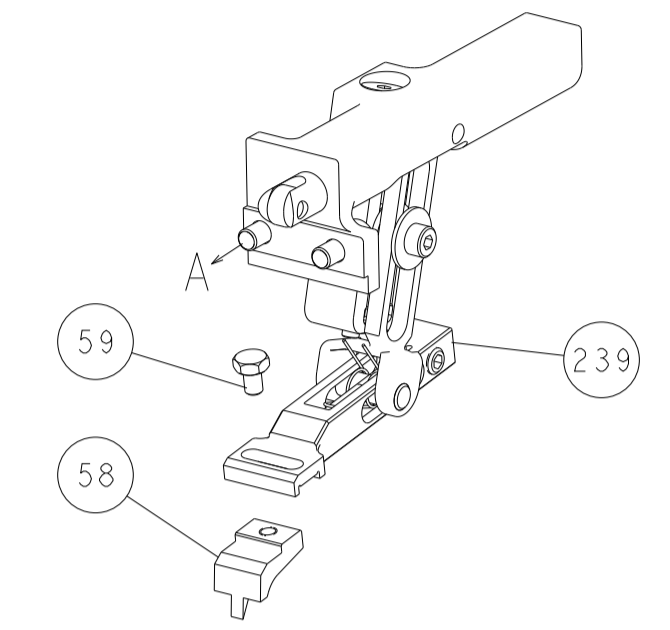
| DIMENSIONS: | TOLERANCES UNLESS OTHERWISE SPECIFIED: | DATE | DESCRIPTION | ITEM NO |
|-------------|---------------------------------------------------------------------------|------------|----------------------------------------------|--------------|
| mm | 0 PLC ± 1 PLC ± 2 PLC ± 3 PLC ± 4 PLC ± ANGLES ± FINISH | APRIL 2015 | TE Connectivity Harrisburg, PA 17105-3608 | |
| | | APRIL 2015 | Ocean End Feed Applicator | |
| | | APRIL 2015 | Customer Accessible Production Drawing | |
| | | | SCALE 1:1 | SHEET 3 OF 4 |

| LOC | | DIST | | REVISIONS | | | |
|-----|----|------|-----|-------------|------|-----|------|
| A | 66 | P | LTM | DESCRIPTION | DATE | OWN | APVD |
| | | - | | SEE SHEET 1 | | | |
| | | | | | | | |
| | | | | | | | |

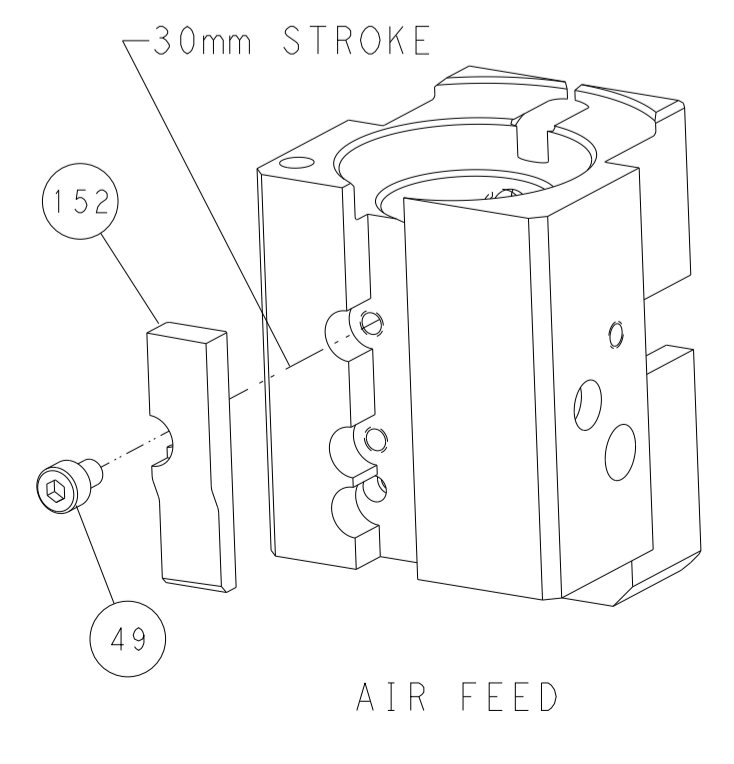
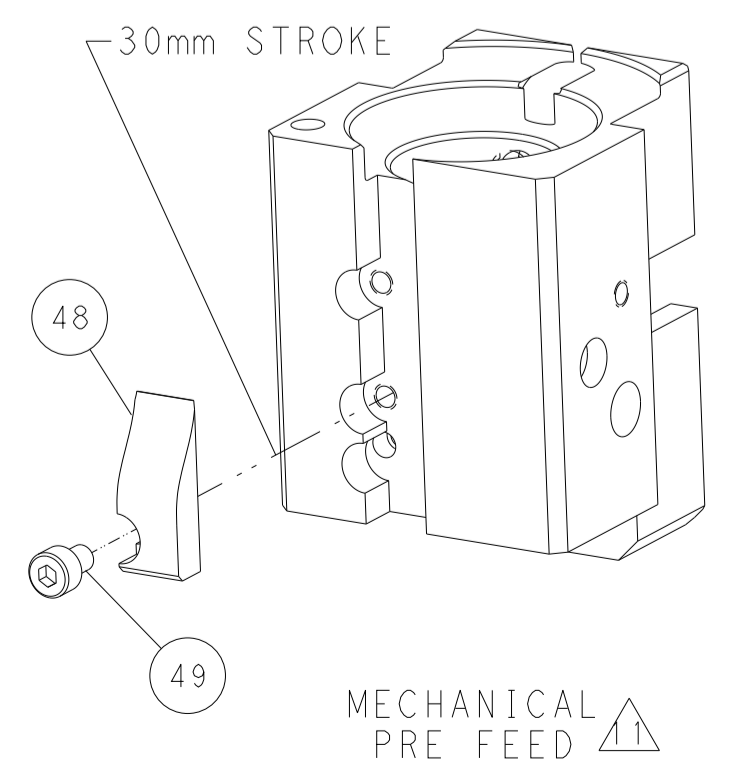
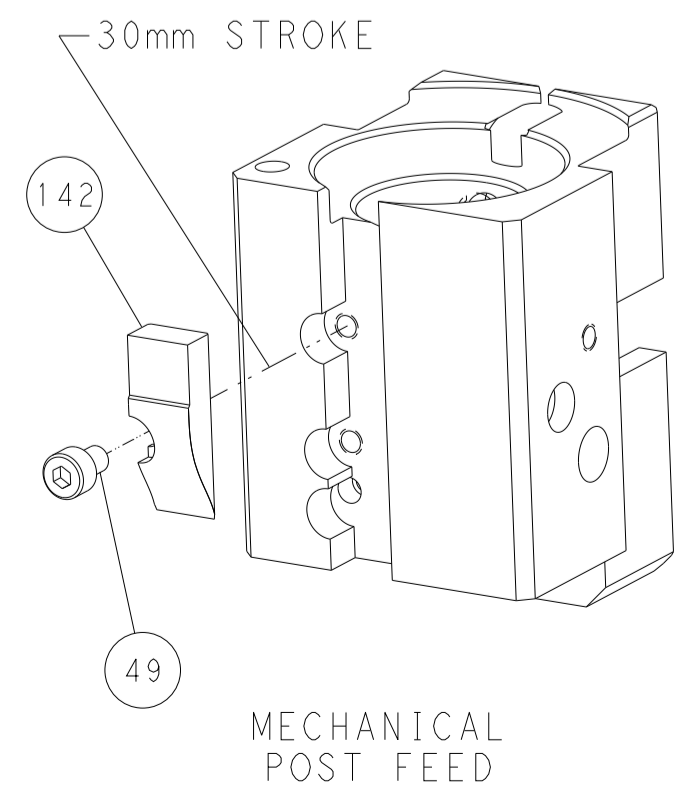


RAM SET-UP

FEED TYPE
MECHANICAL



CAM POSITIONS



PACIFIC VERSION
 Shown on sheets 3 of 4 & 4 of 4
 (Atlantic version shown on sheets 1 of 4 & 2 of 4)

| | | | | | | | |
|-------------|----------|----------------------------------------|---------|----------------------------|----------------------------------------|------------------|---------------------------|
| DIMENSIONS: | | TOLERANCES UNLESS OTHERWISE SPECIFIED: | | OWN: K. STARK 27APRIL2015 | | TE Connectivity | |
| mm | 0 PLC ± | 1 PLC ± | 2 PLC ± | 3 PLC ± | 4 PLC ± | 5 PLC ± | Harrisburg, PA 17105-3608 |
| | ANGLES ± | FINISH ± | | APVD: T. EBLIN 27APRIL2015 | NAME: Ocean End Feed Applicator | | |
| MATERIAL: | | | | PRODUCT SPEC: | SIZE: A1 | CAGE CODE: 00779 | DRAWING NO: C-2150569 |
| | | | | APPLICATION SPEC: | WEIGHT: | SCALE: 1:1 | SHEET 4 OF 4 REV B |
| | | | | RESTRICTED TO: | Customer Accessible Production Drawing | | |