

| PART NUMBER | REVISION | DESCRIPTION | FEED TYPE |
|-------------|----------|----------------------------------|------------|
| 2150067-1 | D | FINE CRIMP HEIGHT ADJUST | MECHANICAL |
| 2150067-2 | D | FINE CRIMP HEIGHT ADJUST | PNEUMATIC |
| 7-2150067-1 | D | MECHANICAL AND CRIMP TOOLING KIT | MECHANICAL |
| 7-2150067-2 | D | PNEUMATIC AND CRIMP TOOLING KIT | PNEUMATIC |
| 7-2150067-7 | A | CRIMP TOOLING KIT | - |

ATLANTIC VERSION TERMINATOR INTERFACE ADAPTER



| APPLICATOR DATA | | |
|-----------------------------------|----------------|------|
| CRIMP | SIZE | TYPE |
| WIRE | 1.78 mm [.070] | F |
| INSUL | 3.05 mm [.120] | Ø |
| APPLICATOR INSTRUCTIONS 408-35043 | | |

| TERMINAL DATA: TE TERMINAL | | TE CRIMP SPECIFICATION | |
|---|-------------|------------------------------|-------------|
| TERMINAL NAME: .250 SERIES AUTOMOTIVE POSITIVE LOCK RECEP | | | |
| WIRE STRIP LENGTH | | INSULATION DIAMETER RANGE | |
| 4.20-5.20 mm [.165-.205 IN] | | Ø1.50-2.40 mm [.059-.094 IN] | |
| TERMINAL APPLICATION SPECIFICATION | 114-5060 | | |
| TERMINALS APPLIED | | | |
| TE TERMINAL | TE TERMINAL | TE TERMINAL | TE TERMINAL |
| 170452-1 | 170452-2 | 368037-2 | |

| WIRE SIZE | CRIMP HEIGHT mm [INCH] | CRIMP HEIGHT REFERENCE SETTING |
|-----------|-------------------------------|--------------------------------|
| 0.50mm2 | 1.36 +/- 0.05 [.054 +/- .002] | 5.4 |
| 0.30mm2 | 1.27 +/- 0.05 [.050 +/- .002] | 6.4 |

- 1 RECOMMENDED SPARE PARTS
- 2 REFER TO SUPPLIED INSTRUCTION SHEET FOR CLEANING, LUBRICATION AND STORAGE OF APPLICATOR.
- 3 APPLY PART NUMBER 2-23419-6 LOCTITE TO THREADS OF ITEM 242. APPLY PART NUMBER 1-23419-5 LOCTITE TO THREADS OF ITEM 50.
- 4 CRIMP HEIGHT REFERENCE SETTING WAS THE SETTING USED WHEN THE APPLICATOR WAS QUALIFIED AT THE FACTORY. ADJUSTMENT MAY BE NECESSARY WHEN RUNNING APPLICATOR IN THE FIELD.
- 5. UNLESS SPECIFIED OTHERWISE TORQUE VALUES SHALL BE USED PER DOCUMENT, 101-35000.

***WARNING**
ON INSTALLATION, SET WIRE DISC TO CRIMP HEIGHT REFERENCE SETTING FOR LARGEST WIRE SIZE. CRIMP HEIGHT REFERENCE SETTINGS GREATER THAN THE VALUE SHOWN MAY CAUSE DAMAGE TO THE CRIMP TOOLING. REFER TO THE INSTRUCTION SHEET FOR PROPER SETUP AND ADJUSTMENTS.

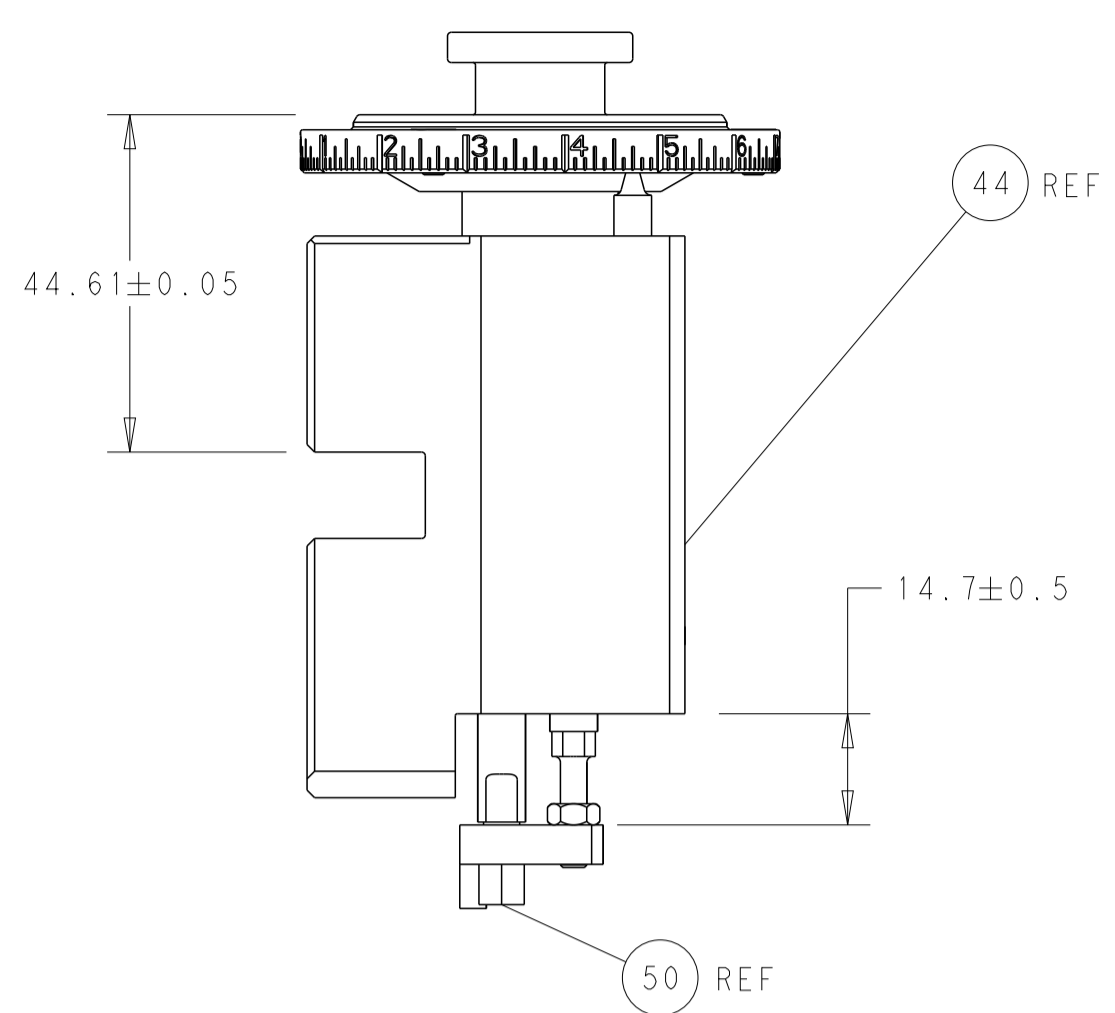
ATLANTIC VERSION
Shown on sheets 1 of 4 & 2 of 4
(Pacific version shown on sheets 3 of 4 & 4 of 4)

| LOC | DIST | REVISIONS | | | | | |
|-----|------|-----------|-----|---------------|-----------|-----|------|
| A | 66 | P | LTM | DESCRIPTION | DATE | OWN | APVD |
| | | B | | ECR-15-004305 | 18MAR2015 | YY | JT |
| | | B1 | | ECR-17-00027 | 04JAN2017 | YY | JDG |
| | | C | | ECR-18-001800 | 06FEB2018 | YY | TE |
| | | D | | ECR-19-011792 | 25JUL2019 | TB | TE |

| | | | | | | | | | | | | |
|---|-----|-----|-----|-----|-------------|-------------------------------------|-----|---|---|---------|-------------|---------|
| - | 1 | - | 1 | - | 2119641-1 | FEED CAM, AIR FEED | 248 | | | | | |
| - | 1 | 1 | 1 | 1 | 2119082-9 | CAM, SNAIL, INSULATION ADJUSTMENT | 244 | | | | | |
| - | 1 | 1 | 1 | 1 | 2079764-1 | WASHER, WAVE SPRING, CREST-TO-CREST | 243 | | | | | |
| - | 1 | 1 | 1 | 1 | 2119083-1 | RETAINER, INSULATION DIAL | 242 | | | | | |
| - | - | 1 | - | 1 | 2119580-1 | MECHANICAL FEED ASSEMBLY | 239 | | | | | |
| - | 1 | - | 1 | - | 2844940-4 | AIR FEED MODULE | 238 | | | | | |
| - | 1 | 1 | 1 | 1 | 1-18028-0 | WASHER, FLAT, REG M8 | 192 | | | | | |
| - | 1 | 1 | 1 | 1 | 6-993111-6 | PIN, SLOTTED SPRING 3.0 X 14.0 | 177 | | | | | |
| - | 1 | 1 | 1 | 1 | 8-22280-7 | SPRING, COMPRESSION | 176 | | | | | |
| - | 1 | 1 | 1 | 1 | 1752353-2 | GUIDE PIN,HOLDDOWN | 175 | | | | | |
| - | 1 | 1 | 1 | 1 | 1901680-2 | GUIDE PIN,HOLDDOWN | 174 | | | | | |
| - | REF | REF | REF | REF | 994970-2 | COUNTER, MAGNETIC | 164 | | | | | |
| - | 1 | 1 | 1 | 1 | 455888-6 | SPACER, CRIMPER | 82 | | | | | |
| - | 1 | 1 | 1 | 1 | 1803607-4 | DOCUMENTATION PACKAGE | 71 | | | | | |
| - | 2 | 2 | 2 | 2 | 2-18032-2 | SCR, SET, FLT PNT, M3 X 10.0 | 70 | | | | | |
| - | 1 | 1 | 1 | 1 | 2119740-1 | TAG, IDENTIFICATION | 67 | | | | | |
| - | 2 | 2 | 2 | 2 | 2168078-1 | SCREW, DRIVE, RH, RoHS, 2 x .188 | 66 | | | | | |
| - | 1 | 1 | 1 | 1 | 1901681-1 | HOLDDOWN, TERMINAL | 65 | | | | | |
| - | 1 | 1 | 1 | 1 | 2168083-2 | SCR, SKT HD CAP, RoHS, M4 X 8.0 | 60 | | | | | |
| - | 1 | 1 | 1 | 1 | 5-18022-5 | SCR, HEX HD CAP, M4 X 6.0 | 59 | | | | | |
| - | - | 1 | - | 1 | 2063961-1 | FEED FINGER | 58 | | | | | |
| - | 4 | 4 | 4 | 4 | 2168400-4 | SHCS, LOW HEAD, RoHS, M4 X 8 | 57 | | | | | |
| - | 2 | 2 | 2 | 2 | 2168083-8 | SCR, SKT HD CAP, RoHS, M4 X 16 | 56 | | | | | |
| - | 2 | 2 | 2 | 2 | 5018030-1 | NUT, HEX, REG, RoHS, M3 | 54 | | | | | |
| - | 2 | 2 | 2 | 2 | 986965-8 | NUT, LOCK, HEX, TORQUE (M4) | 53 | | | | | |
| - | 1 | 1 | 1 | 1 | 1-5018030-0 | NUT, HEX, REG, RoHS, M3.5 | 52 | | | | | |
| - | 1 | - | 1 | - | 2063961-9 | FEED FINGER | 51 | | | | | |
| - | 1 | 1 | 1 | 1 | 1752354-6 | STANDOFF,HOLD-DOWN | 50 | | | | | |
| - | 1 | 2 | 1 | 2 | 18023-9 | SCR, SKT HD CAP M4 X 6.0 | 49 | | | | | |
| - | - | 1 | - | 1 | 2119652-1 | FEED CAM, PRE FEED | 48 | | | | | |
| - | - | 1 | - | 1 | 2119653-1 | FEED CAM, POST FEED | 47 | | | | | |
| - | 1 | 1 | 1 | 1 | 2119655-5 | APPLICATOR BASIC ASSEMBLY, EF | 46 | | | | | |
| - | 1 | 1 | 1 | 1 | 1803517-1 | RAM ASSEMBLY, EF ATLANTIC | 44 | | | | | |
| - | 1 | 1 | 1 | 1 | 1803602-1 | SCR, BHSC, RoHS (M8 X 25) | 41 | | | | | |
| - | 8 | 8 | 8 | 8 | 1-18028-2 | WASHER, FLAT, REG M4 | 33 | | | | | |
| - | 2 | 2 | 2 | 2 | 2168083-9 | SCR, SKT HD CAP, RoHS, M4 X 20 | 31 | | | | | |
| - | 2 | 2 | 2 | 2 | 2168083-2 | SCR, SKT HD CAP, RoHS, M4 X 8.0 | 29 | | | | | |
| - | 1 | 1 | 1 | 1 | 240639-1 | STRIPPER (MACHINING) | 27 | | | | | |
| - | 2 | 2 | 2 | 2 | 1-2168083-5 | SCR, SKT HD CAP, RoHS, M4 X 30 | 25 | | | | | |
| - | 1 | 1 | 1 | 1 | 1752371-5 | PLATE, STRIP GUIDE | 24 | | | | | |
| - | 2 | 2 | 2 | 2 | 2-22281-3 | SPRING, COMPRESSION | 22 | | | | | |
| - | 1 | 1 | 1 | 1 | 1803292-4 | DRAG | 20 | | | | | |
| - | 2 | 2 | 2 | 2 | 1901259-3 | GUIDE, LOWER STRIP | 18 | | | | | |
| - | 4 | 4 | 4 | 4 | 1-2079383-1 | SCR, BHSC, RoHS (M6 X 12) | 17 | | | | | |
| - | 1 | 1 | 1 | 1 | 5-240641-2 | SPACER | 16 | | | | | |
| - | 1 | 1 | 1 | 1 | 1752360-1 | SPACER,HOLD-DOWN | 13 | | | | | |
| - | 1 | 1 | 1 | 1 | 240644-1 | PLATE, REAR SHEAR | 11 | | | | | |
| - | - | - | - | - | - | - | 10 | | | | | |
| - | 1 | 1 | 1 | 1 | 690482-4 | PLATE, FRONT SHEAR | 9 | | | | | |
| - | 1 | 2 | 2 | 1 | 1803000-8 | ANVIL, COMBINATION, END FEED | 8 | | | | | |
| - | 1 | 1 | 1 | 1 | 1-2217206-0 | BLADE, SLUG | 7 | | | | | |
| - | 1 | 1 | 1 | 1 | 2-240641-5 | SPACER | 5 | | | | | |
| - | 1 | 1 | 1 | 1 | 238011-4 | BLOCK, CRIMPER SPACER | 4 | | | | | |
| - | 1 | 2 | 2 | 1 | 1633965-2 | CRIMPER, INSULATION O PREMIUM | 3 | | | | | |
| - | 1 | 1 | 1 | 1 | 455888-8 | SPACER, CRIMPER | 2 | | | | | |
| - | 1 | 2 | 2 | 1 | 1-456404-8 | CRIMPER, WIRE PREMIUM | 1 | | | | | |
| - | 77 | - | 72 | - | 71 | - | 2 | - | 1 | PART NO | DESCRIPTION | ITEM NO |

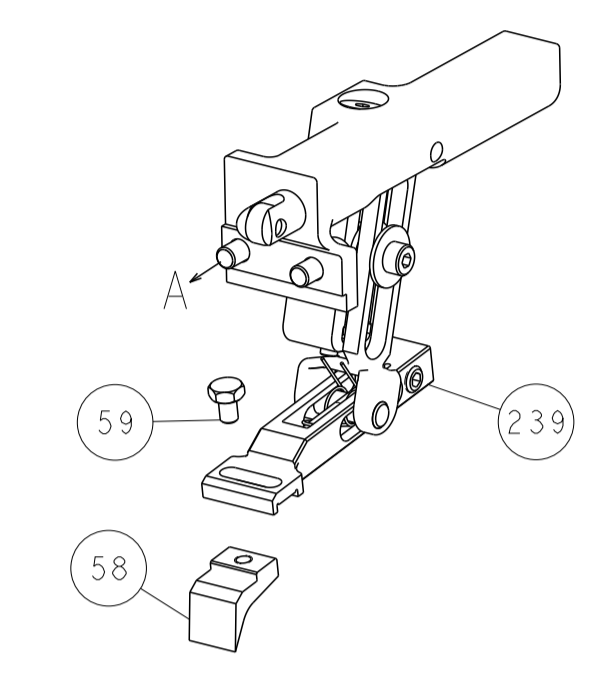
| | | | | | |
|--|--|--|--|--|--|
| <small>THIS DRAWING IS UNPUBLISHED. RELEASED FOR PUBLICATION. BY TYCO ELECTRONICS CORPORATION. ALL RIGHTS RESERVED. COPYRIGHT 20</small> | | <small>THIS IS A PRELIMINARY DRAWING. IT IS SUBJECT TO CHANGE WITHOUT NOTICE. ANY DIMENSIONS SHOWN ARE FOR INFORMATION ONLY. DIMENSIONS SHOULD BE CONFIRMED FOR THE LATEST REVISION.</small> | | DWN T.YIN 21FEB2012 CHK G.BAILEY 21FEB2012 APVD S.XI 21FEB2012 | TE Connectivity Harrisburg, PA 17105-3608 |
| DIMENSIONS: mm | | TOLERANCES UNLESS OTHERWISE SPECIFIED: 0 PLC ± 1 PLC ± 2 PLC ± 3 PLC ± 4 PLC ± ANGLES ± FINISH | | NAME Ocean End Feed Applicator SIZE A1 CAGE CODE 00779 DRAWING NO C=2150067 RESTRICTED TO - | |
| MATERIAL | | WEIGHT | | Customer Accessible Production Drawing | |
| | | | | SCALE 1:1 SHEET 1 OF 4 REV D | |

| LOC | DIST | REV | DESCRIPTION | DATE | OWN | APVD |
|-----|------|-----|-------------|------|-----|------|
| A | 66 | | SEE SHEET 1 | | | |

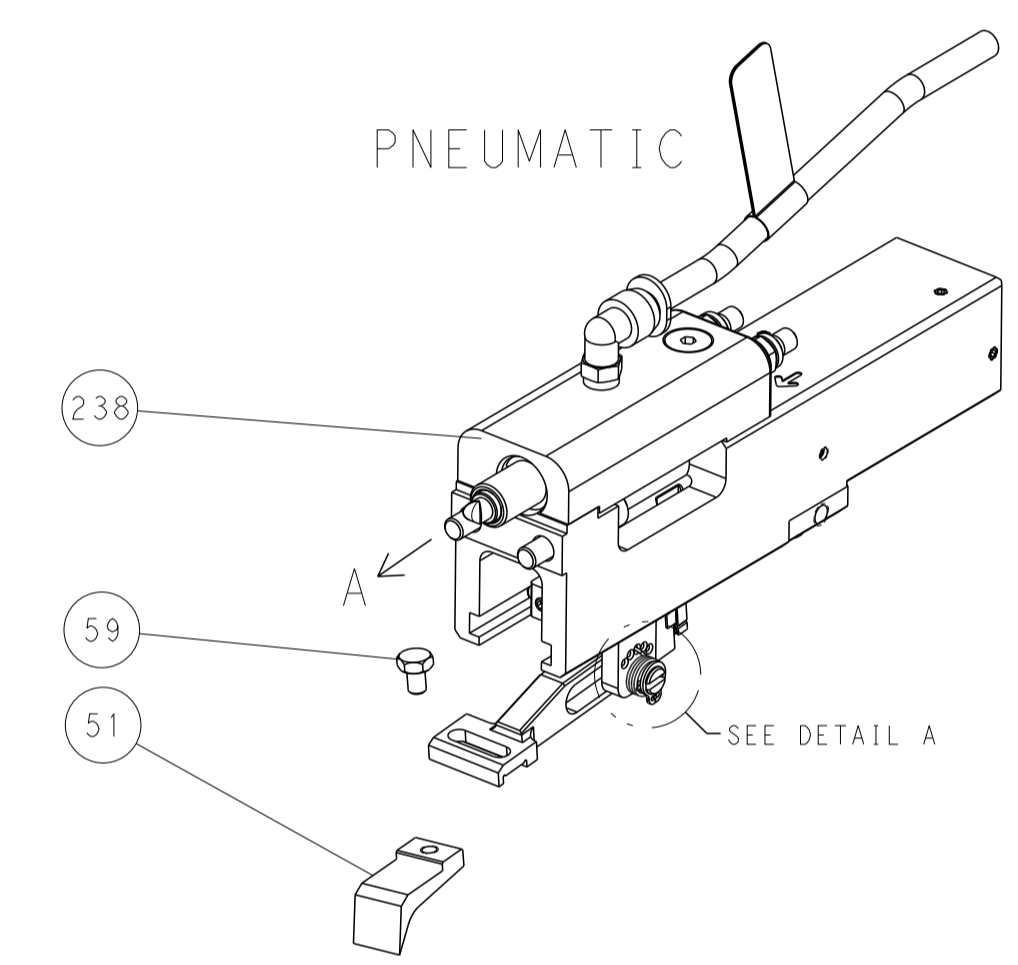


RAM AND HOLDDOWN SET-UP

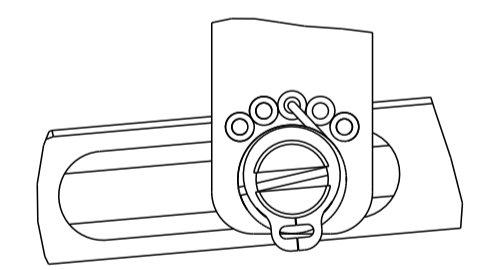
FEED TYPE
MECHANICAL



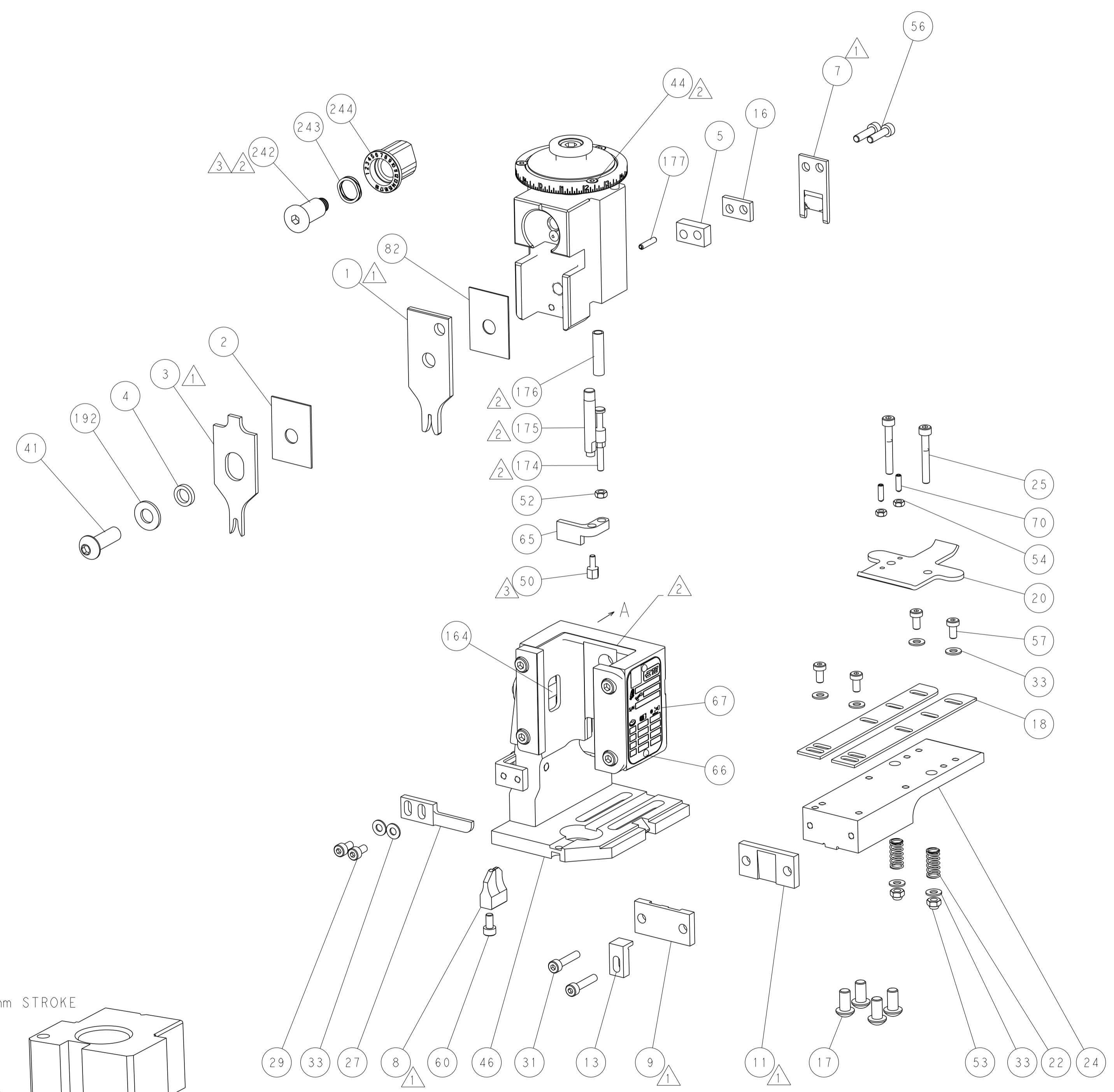
PNEUMATIC



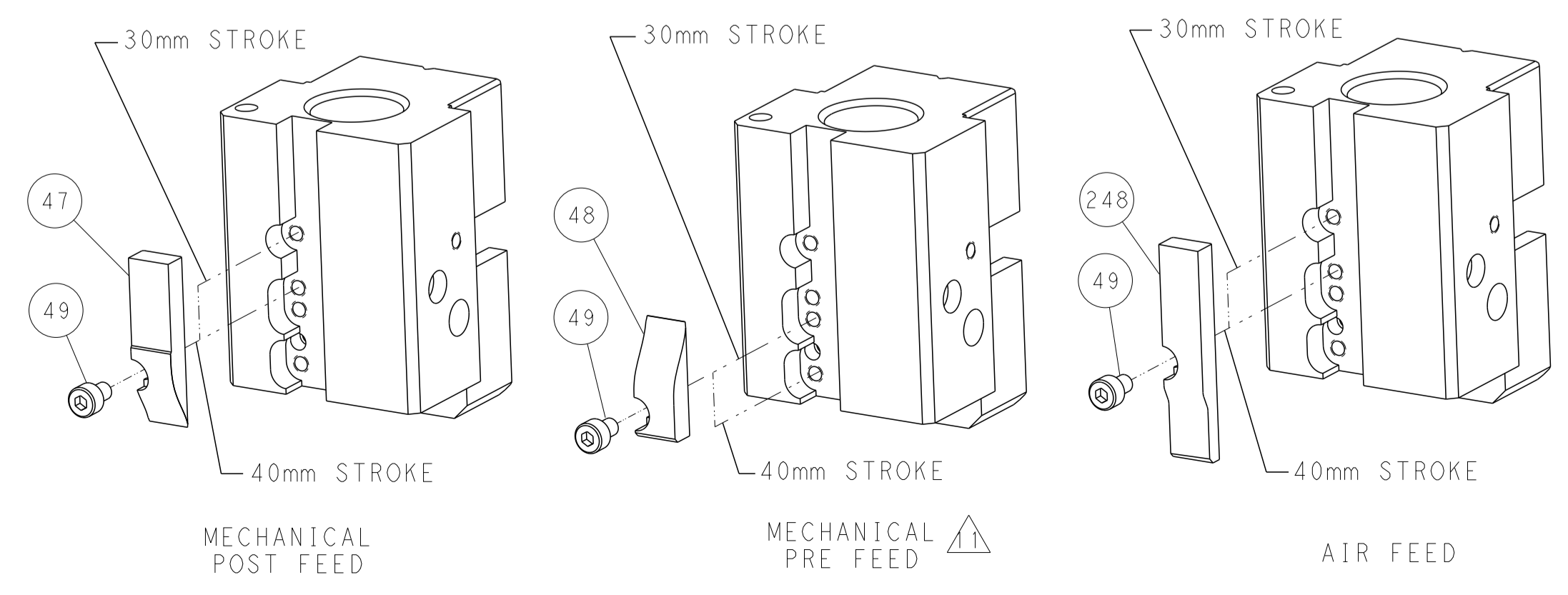
FEED SPRING
SETTING POSITION



DETAIL A



CAM POSITIONS



ATLANTIC VERSION
 Shown on sheets 1 of 4 & 2 of 4
 (Pacific version shown on sheets 3 of 4 & 4 of 4)

| | | | | | | | |
|-----------------------|--|---|--|---|--|--|--|
| DIMENSIONS: mm | | TOLERANCES UNLESS OTHERWISE SPECIFIED: 0 PLC ± 1 PLC ± 2 PLC ± 3 PLC ± 4 PLC ± ANGLES ± FINISH | | DWN Y. YIN 21FEB2012 CHK G. BAILEY 21FEB2012 APVD S. XI 21FEB2012 PRODUCT SPEC APPLICATION SPEC WEIGHT Customer Accessible Production Drawing | | NAME Ocean End Feed Applicator SIZE CAGE CODE DRAWING NO. RESTRICTED TO A1 00779 C=2150067 | |
| MATERIAL | | SCALE 1:1 | | SHEET 2 of 4 | | REV D | |

| THIS DRAWING IS UNPUBLISHED. | RELEASED FOR PUBLICATION | | |
|--|--------------------------|--------------------------|------------|
| COPYRIGHT 20 BY TYCO ELECTRONICS CORPORATION. ALL RIGHTS RESERVED. | | | |
| PART NUMBER | REVISION | DESCRIPTION | FEED TYPE |
| 2-2150067-1 | D | FINE CRIMP HEIGHT ADJUST | MECHANICAL |
| 2-2150067-2 | D | FINE CRIMP HEIGHT ADJUST | PNEUMATIC |
| 7-2150067-7 | A | CRIMP TOOLING KIT | - |

PACIFIC VERSION TERMINATOR
INTERFACE ADAPTER



| APPLICATOR DATA | | |
|--------------------------------------|----------------|------|
| CRIMP | SIZE | TYPE |
| WIRE | 1.78 mm (.070) | F |
| INSUL | 3.05 mm (.120) | O |
| APPLICATOR INSTRUCTIONS 408-35043 | | |

| | | | |
|---|-------------|---|-------------|
| TERMINAL DATA: TE TERMINAL | | TE CRIMP SPECIFICATION | |
| TERMINAL NAME: .250 SERIES AUTOMOTIVE POSITIVE LOCK RECEP | | | |
| WIRE STRIP LENGTH 4.20-5.20 mm (.165-.205 IN) | | INSULATION DIAMETER RANGE Ø1.50-2.40 mm (.059-.094 IN) | |
| TERMINAL APPLICATION SPECIFICATION 114-5060 | | | |
| TERMINALS APPLIED | | | |
| TE TERMINAL | TE TERMINAL | TE TERMINAL | TE TERMINAL |
| 170452-1 | 170452-2 | 368037-2 | |

| WIRE SIZE | CRIMP HEIGHT mm [INCH] | CRIMP HEIGHT REFERENCE SETTING |
|---------------------|----------------------------|--------------------------------|
| 0.50mm ² | 1.36+/-0.05 [.054+/-0.002] | 5.4 |
| 0.30mm ² | 1.27+/-0.05 [.050+/-0.002] | 6.4 |

- RECOMMENDED SPARE PARTS
- REFER TO SUPPLIED INSTRUCTION SHEET FOR CLEANING, LUBRICATION AND STORAGE OF APPLICATOR.
- APPLY PART NUMBER 2-23419-6 LOCTITE TO THREADS OF ITEM 242. APPLY PART NUMBER 1-23419-5 LOCTITE TO THREADS OF ITEM 50.
- CRIMP HEIGHT REFERENCE SETTING WAS THE SETTING USED WHEN THE APPLICATOR WAS QUALIFIED AT THE FACTORY. ADJUSTMENT MAY BE NECESSARY WHEN RUNNING APPLICATOR IN THE FIELD.
- UNLESS SPECIFIED OTHERWISE TORQUE VALUES SHALL BE USED PER DOCUMENT, 101-35000.

***WARNING**
ON INSTALLATION, SET WIRE DISC TO CRIMP HEIGHT REFERENCE SETTING FOR LARGEST WIRE SIZE. CRIMP HEIGHT REFERENCE SETTINGS GREATER THAN THE VALUE SHOWN MAY CAUSE DAMAGE TO THE CRIMP TOOLING. REFER TO THE INSTRUCTION SHEET FOR PROPER SETUP AND ADJUSTMENTS.

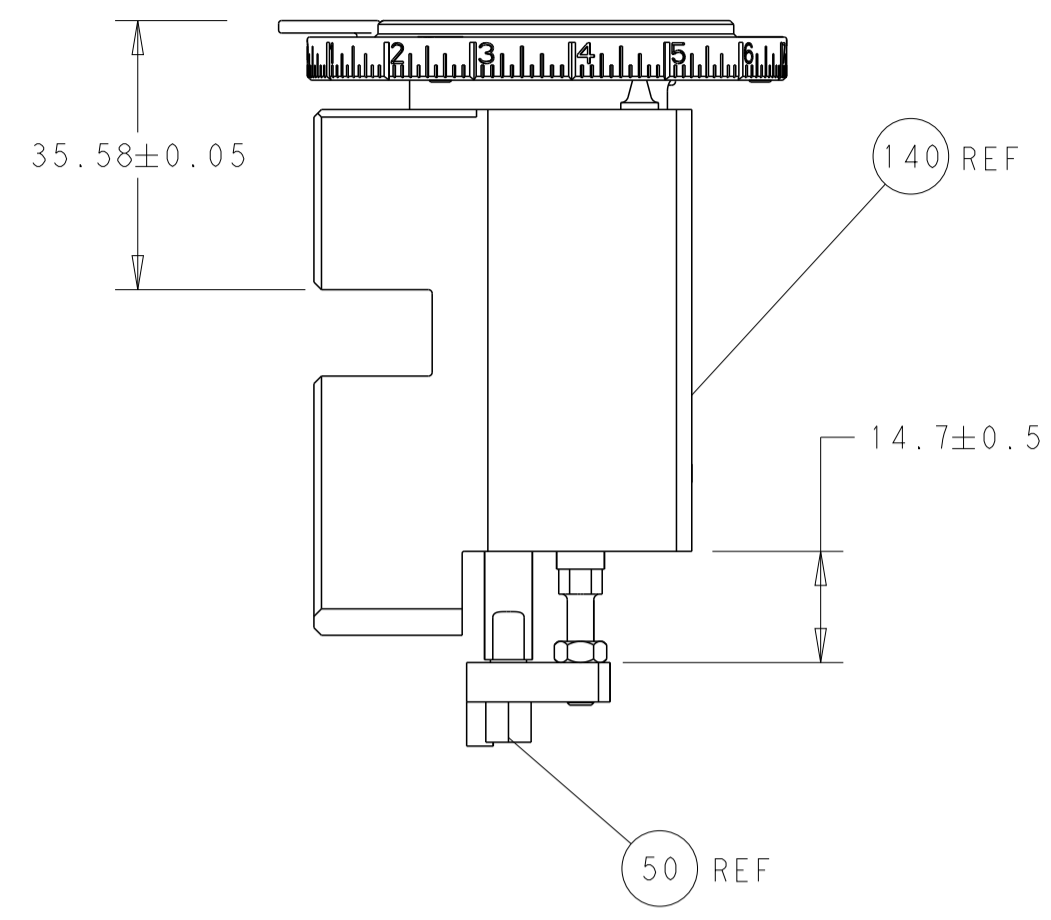
| LOC | DIST | REVISIONS | | | | | |
|-----|------|-----------|-----|-------------|------|-----|------|
| A | 66 | P | LTN | DESCRIPTION | DATE | OWN | APVD |
| | | - | | SEE SHEET 1 | | | |

| | | | | | | |
|---|-----|-----|-------------|-------------------------------------|-------------|---------|
| - | 1 | 1 | 2119082-9 | CAM, SNAIL, INSULATION ADJUSTMENT | 244 | |
| - | 1 | 1 | 2079764-1 | WASHER, WAVE SPRING, CREST-TO-CREST | 243 | |
| - | 1 | 1 | 2119083-1 | RETAINER, INSULATION DIAL | 242 | |
| - | - | 1 | 2119580-1 | MECHANICAL FEED ASSEMBLY | 239 | |
| - | 1 | - | 2844940-4 | AIR FEED MODULE | 238 | |
| - | 1 | 1 | 1-18028-0 | WASHER, FLAT, REG M8 | 192 | |
| - | 4 | 4 | 2079383-9 | SCR, BHSC, RoHS (M6 X 20) | 186 | |
| - | 1 | 1 | 6-993111-6 | PIN, SLOTTED SPRING 3.0 X 14.0 | 177 | |
| - | 1 | 1 | 8-22280-7 | SPRING, COMPRESSION | 176 | |
| - | 1 | 1 | 1752353-2 | GUIDE PIN,HOLDDOWN | 175 | |
| - | 1 | 1 | 1901680-2 | GUIDE PIN,HOLDDOWN | 174 | |
| - | REF | REF | 994970-2 | COUNTER, MAGNETIC | 164 | |
| - | 1 | - | 2119641-2 | FEED CAM, AIR FEED | 152 | |
| - | 1 | 1 | 2168083-8 | SCR, SKT HD CAP, RoHS, M4 X 16 | 144 | |
| - | - | 1 | 2119653-2 | FEED CAM, POST FEED | 142 | |
| - | 1 | 1 | 2119655-6 | APPLICATOR BASIC ASSEMBLY, EF | 141 | |
| - | 1 | 1 | 1803518-1 | RAM ASSEMBLY, EF PACIFIC | 140 | |
| - | 1 | 1 | 455888-6 | SPACER, CRIMPER | 82 | |
| - | 1 | 1 | 1803607-4 | DOCUMENTATION PACKAGE | 71 | |
| - | 2 | 2 | 2-18032-2 | SCR, SET, FLT PNT, M3 X 10.0 | 70 | |
| - | 1 | 1 | 2119943-1 | WASHER, SPACER | 69 | |
| - | 1 | 1 | 2119740-1 | TAG,IDENTIFICATION | 67 | |
| - | 2 | 2 | 2168078-1 | SCREW, DRIVE, RH, RoHS, 2 x .188 | 66 | |
| - | 1 | 1 | 1901681-1 | HOLDDOWN, TERMINAL | 65 | |
| - | 1 | 1 | 5-18022-5 | SCR, HEX HD CAP, M4 X 6.0 | 59 | |
| - | - | 1 | 2063961-1 | FEED FINGER | 58 | |
| - | 4 | 4 | 2168400-4 | SHCS, LOW HEAD, RoHS, M4 X 8 | 57 | |
| - | 2 | 2 | 2168083-8 | SCR, SKT HD CAP, RoHS, M4 X 16 | 56 | |
| - | 2 | 2 | 5018030-1 | NUT, HEX, REG, RoHS, M3 | 54 | |
| - | 2 | 2 | 986965-8 | NUT, LOCK, HEX, TORQUE (M4) | 53 | |
| - | 1 | 1 | 1-5018030-0 | NUT, HEX, REG, RoHS, M3.5 | 52 | |
| - | 1 | - | 2063961-9 | FEED FINGER | 51 | |
| - | 1 | 1 | 1752354-6 | STANDOFF,HOLD-DOWN | 50 | |
| - | 1 | 2 | 18023-9 | SCR, SKT HD CAP M4 X 6.0 | 49 | |
| - | - | 1 | 2119652-1 | FEED CAM, PRE FEED | 48 | |
| - | 1 | 1 | 1803602-1 | SCR, BHSC, RoHS (M8 X 25) | 41 | |
| - | 8 | 8 | 1-18028-2 | WASHER, FLAT, REG M4 | 33 | |
| - | 2 | 2 | 2168083-9 | SCR, SKT HD CAP, RoHS, M4 X 20 | 31 | |
| - | 2 | 2 | 2168083-2 | SCR, SKT HD CAP, RoHS, M4 X 8.0 | 29 | |
| - | 1 | 1 | 240639-1 | STRIPPER (MACHINING) | 27 | |
| - | 2 | 2 | 1-2168083-5 | SCR, SKT HD CAP, RoHS, M4 X 30 | 25 | |
| - | 1 | 1 | 1752371-5 | PLATE, STRIP GUIDE | 24 | |
| - | 2 | 2 | 2-22281-3 | SPRING, COMPRESSION | 22 | |
| - | 1 | 1 | 1803292-4 | DRAG | 20 | |
| - | 2 | 2 | 1901259-3 | GUIDE, LOWER STRIP | 18 | |
| - | 1 | 1 | 5-240641-2 | SPACER | 16 | |
| - | 1 | 1 | 1752360-1 | SPACER,HOLD-DOWN | 13 | |
| - | 1 | 1 | 240644-1 | PLATE, REAR SHEAR | 11 | |
| - | - | - | - | - | 10 | |
| - | 1 | 1 | 690482-4 | PLATE, FRONT SHEAR | 9 | |
| - | 1 | 1 | 1803000-8 | ANVIL, COMBINATION, END FEED | 8 | |
| - | 1 | 1 | 1-2217206-0 | BLADE, SLUG | 7 | |
| - | 1 | 1 | 2-240641-5 | SPACER | 5 | |
| - | 1 | 1 | 238011-4 | BLOCK, CRIMPER SPACER | 4 | |
| - | 1 | 1 | 1633965-2 | CRIMPER, INSULATION O PREMIUM | 3 | |
| - | 1 | 1 | 455888-8 | SPACER, CRIMPER | 2 | |
| - | 1 | 1 | 1-456404-8 | CRIMPER, WIRE PREMIUM | 1 | |
| - | 77 | 22 | 21 | PART NO | DESCRIPTION | ITEM NO |

PACIFIC VERSION
Shown on sheets 3 of 4 & 4 of 4
(Atlantic version shown on sheets 1 of 4 & 2 of 4)

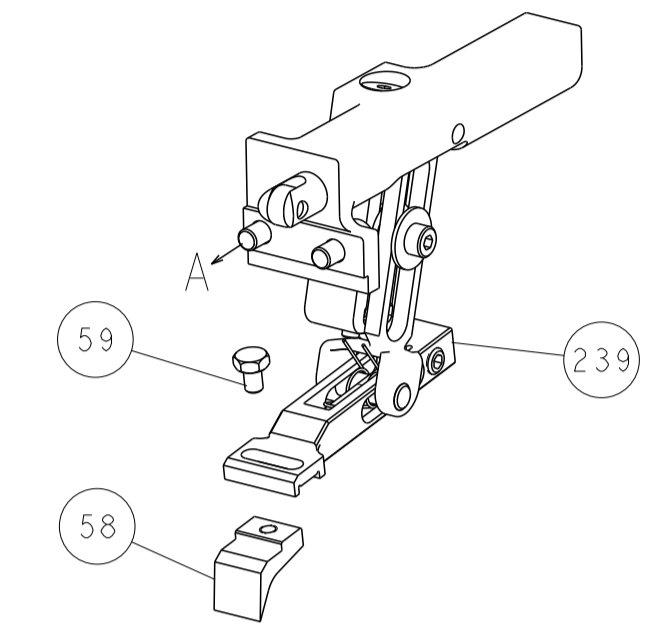
| | | | | | | | |
|-------------|--|---|--|--|--|--|--|
| DIMENSIONS: | | TOLERANCES UNLESS OTHERWISE SPECIFIED: | | DWG Y. YIN 21FEB2012 | | TE Connectivity Harrisburg, PA 17105-3608 | |
| mm | | 0 PLC ± 1 PLC ± 2 PLC ± 3 PLC ± 4 PLC ± ANGLES ± FINISH | | CHK G. BAILEY 21FEB2012 | | NAME Ocean End Feed Applicator | |
| MATERIAL | | FINISH | | APVD S. XI 21FEB2012 | | SIZE A1 | |
| | | | | PRODUCT SPEC | | CAGE CODE 00779 | |
| | | | | APPLICATION SPEC | | DRAWING NO 2150067 | |
| | | | | WEIGHT | | SCALE 1:1 | |
| | | | | RESTRICTED TO | | SHEET 3 OF 4 | |
| | | | | Customer Accessible Production Drawing | | REV D | |

| LOC | DIST | REVISIONS | | | | | |
|-----|------|-----------|-----|-------------|------|-----|------|
| A | 66 | P | LTM | DESCRIPTION | DATE | OWN | APVD |
| | | - | | SEE SHEET 1 | | | |

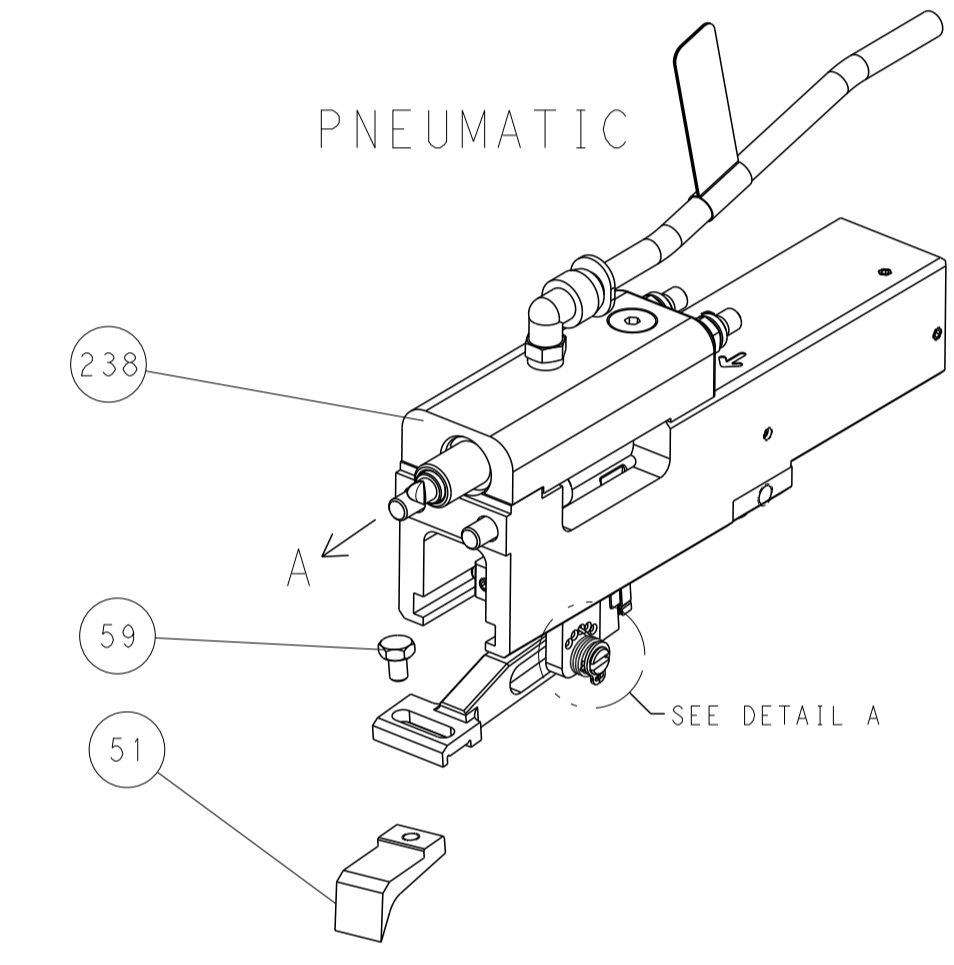


RAM AND HOLDDOWN SET-UP

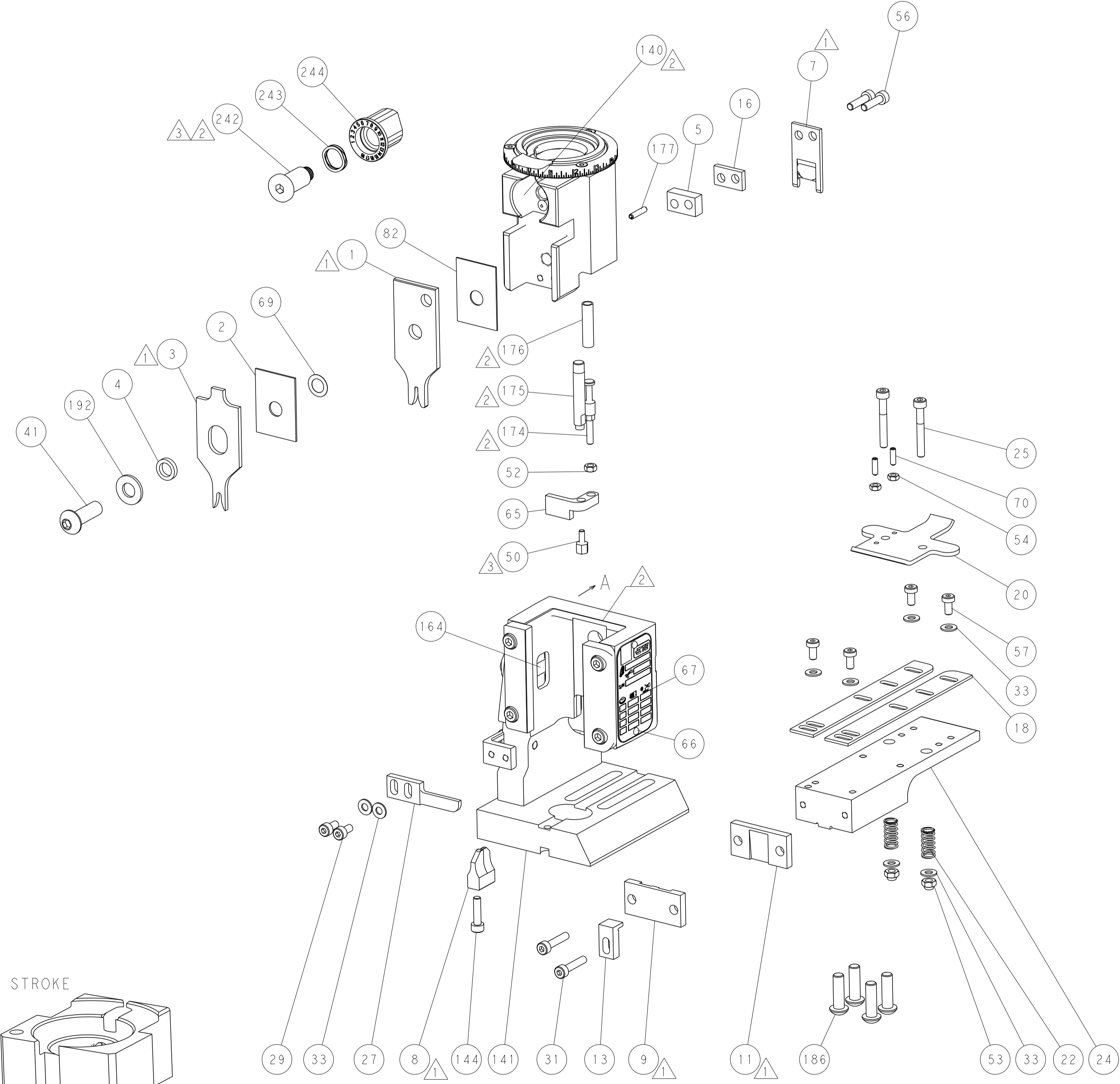
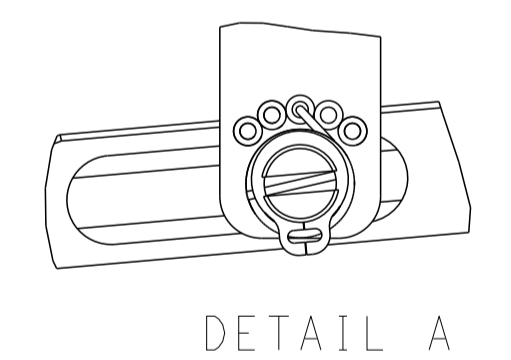
FEED TYPE
MECHANICAL



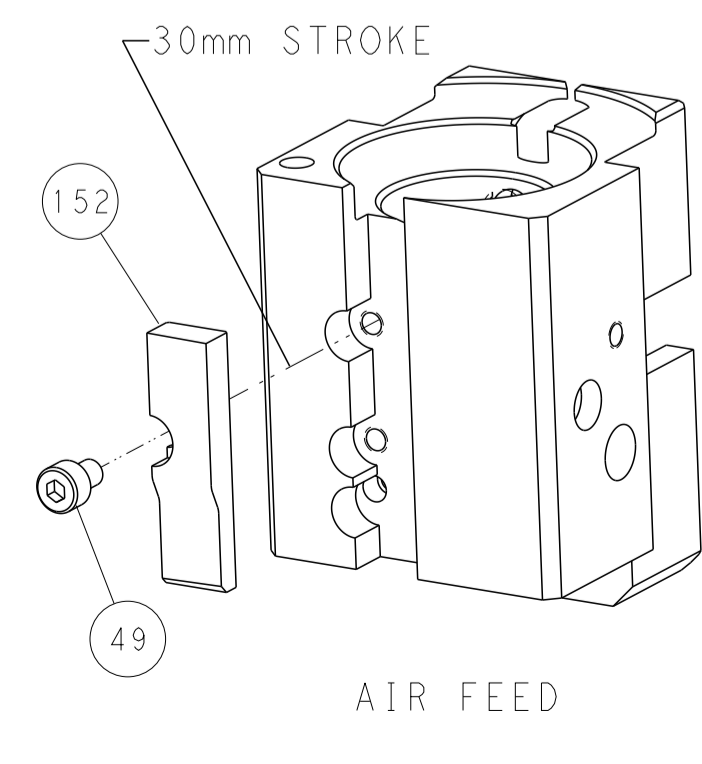
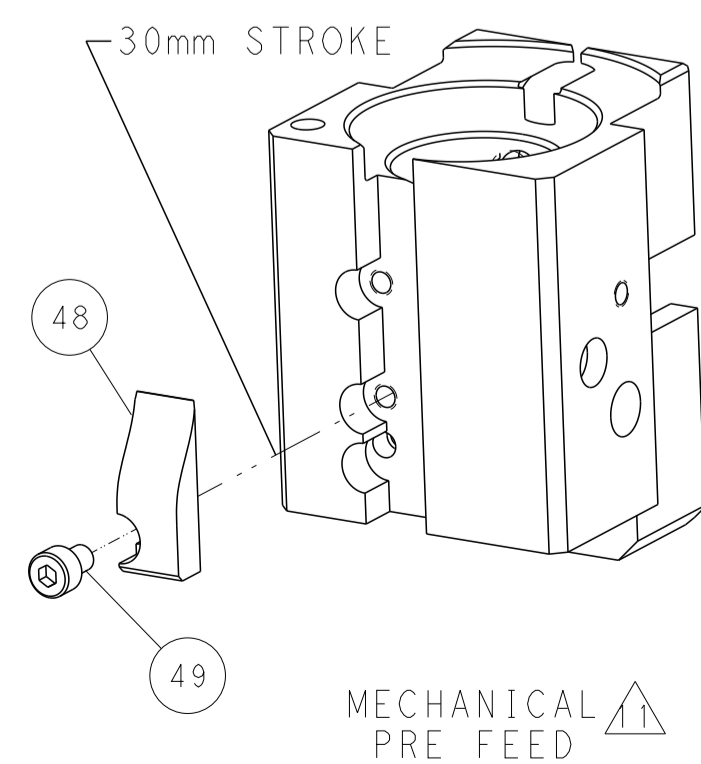
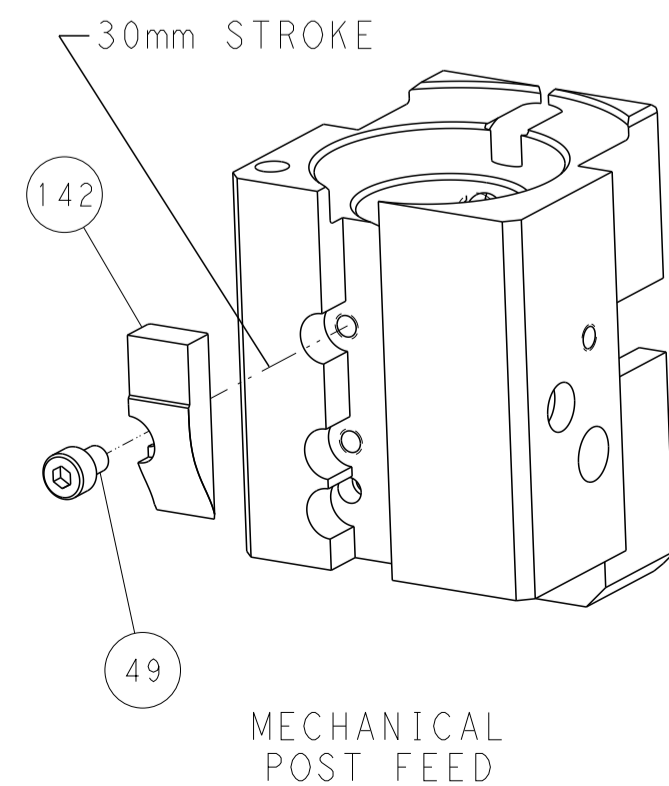
PNEUMATIC



FEED SPRING
SETTING POSITION



CAM POSITIONS



PACIFIC VERSION
 Shown on sheets 3 of 4 & 4 of 4
 (Atlantic version shown on sheets 1 of 4 & 2 of 4)

| | | | | | | | | | |
|-----------------------|--|---|--|---|--|--|--|---|--|
| DIMENSIONS: mm | | TOLERANCES UNLESS OTHERWISE SPECIFIED: 0 PLC ± 1 PLC ± 2 PLC ± 3 PLC ± 4 PLC ± ANGLES ± FINISH | | DWN Y. YIN 21FEB2012 CHK G. BAILEY 21FEB2012 APVD S. XI 21FEB2012 PRODUCT SPEC APPLICATION SPEC WEIGHT Customer Accessible Production Drawing | | NAME Ocean End Feed Applicator SIZE CAGE CODE DRAWING NO A1 00779 C=2150067 SCALE 1:1 SHEET 4 OF 4 REV D | | STE TE Connectivity Harrisburg, PA 17105-3608 RESTRICTED TO | |
|-----------------------|--|---|--|---|--|--|--|---|--|