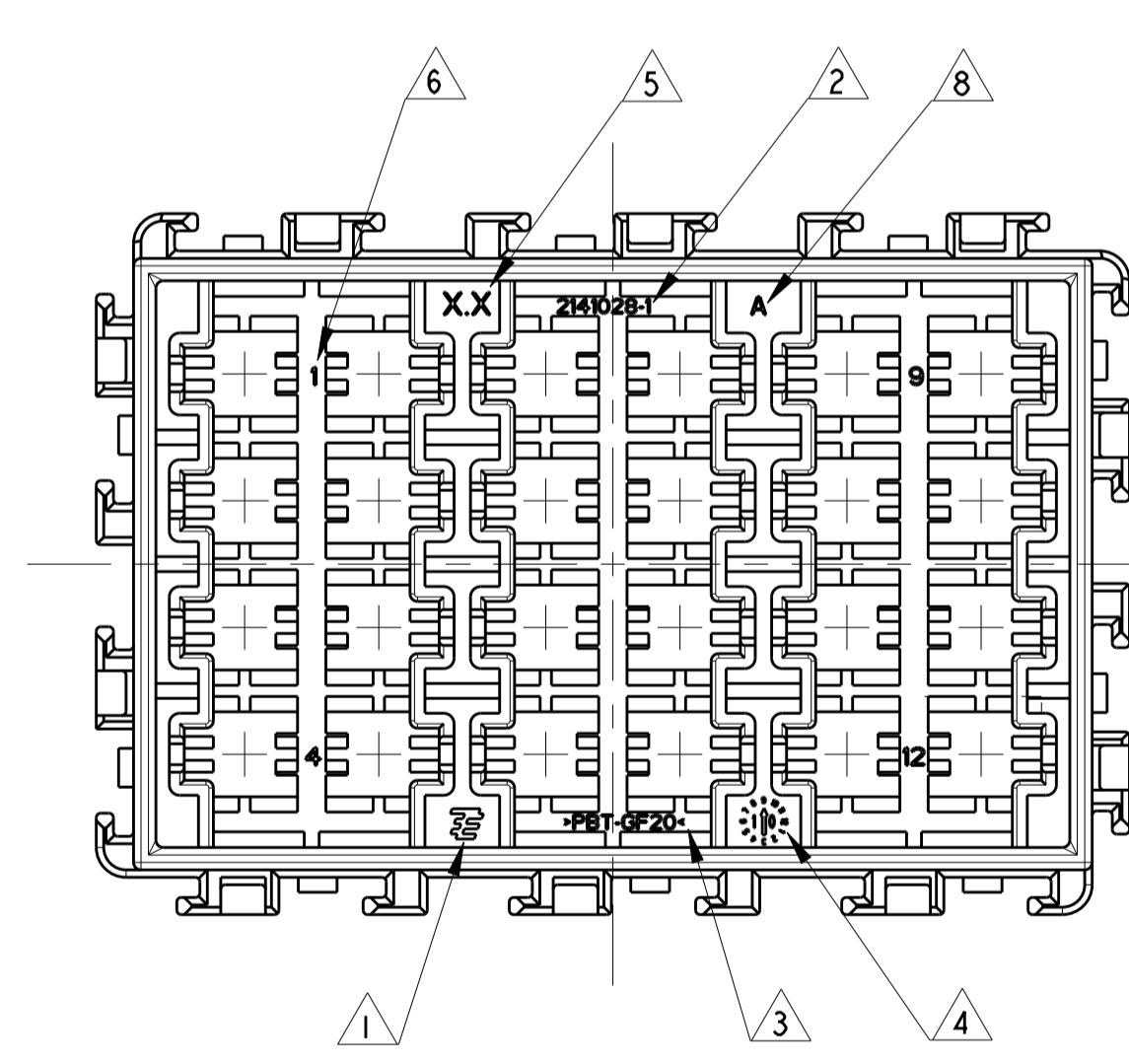
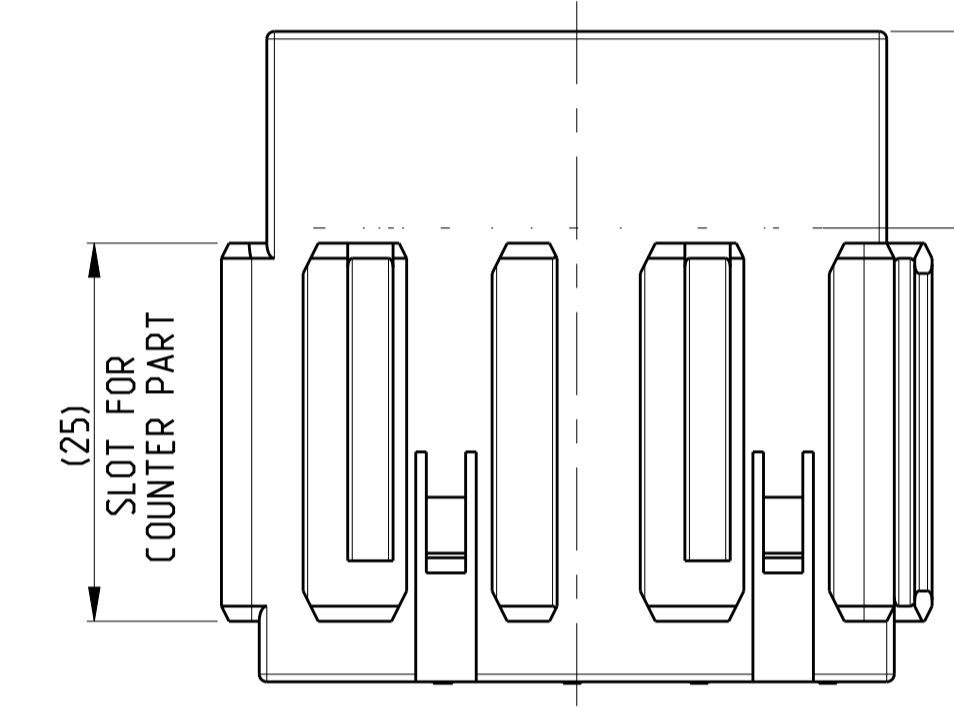
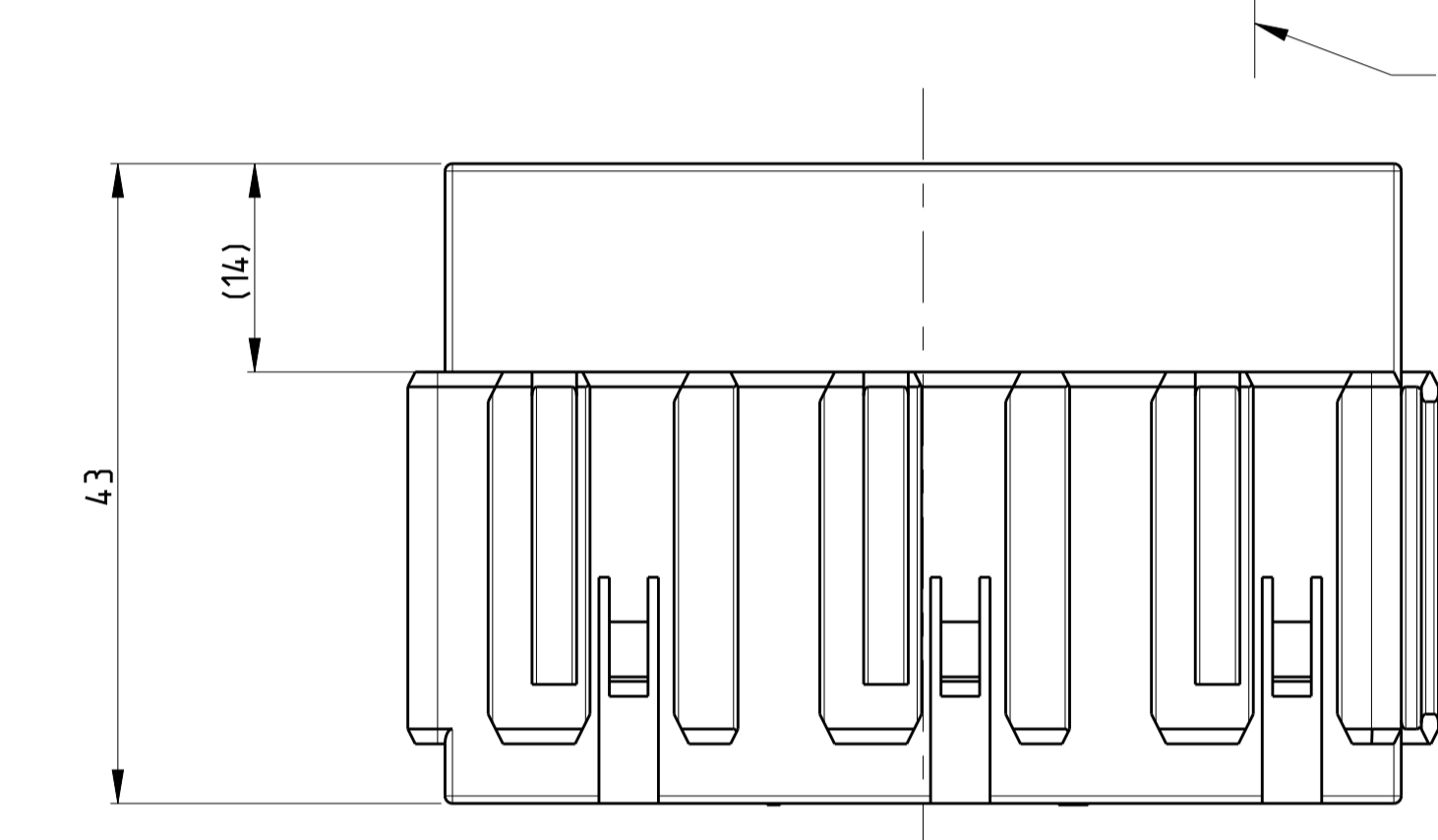
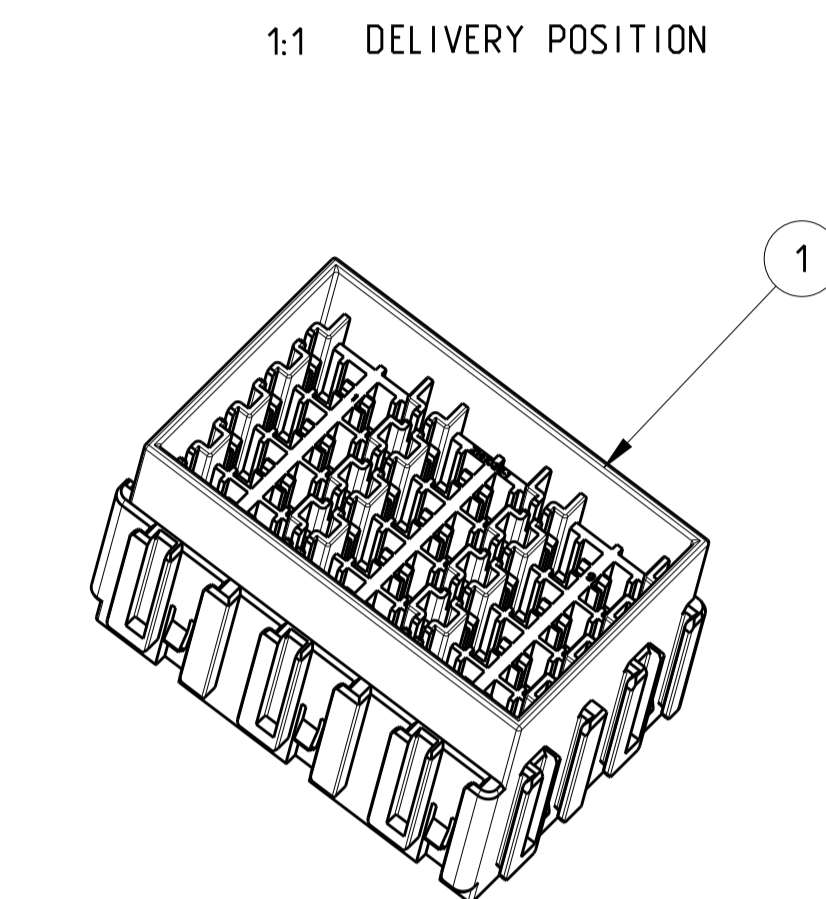
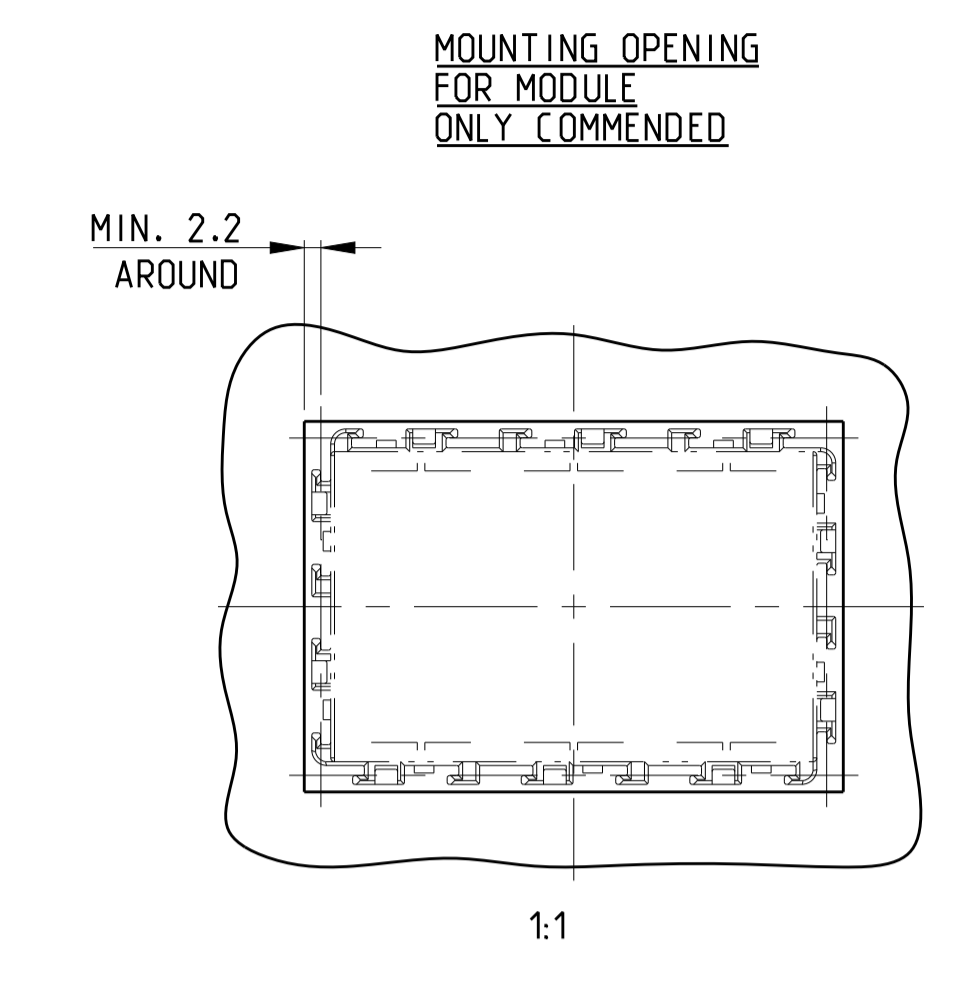
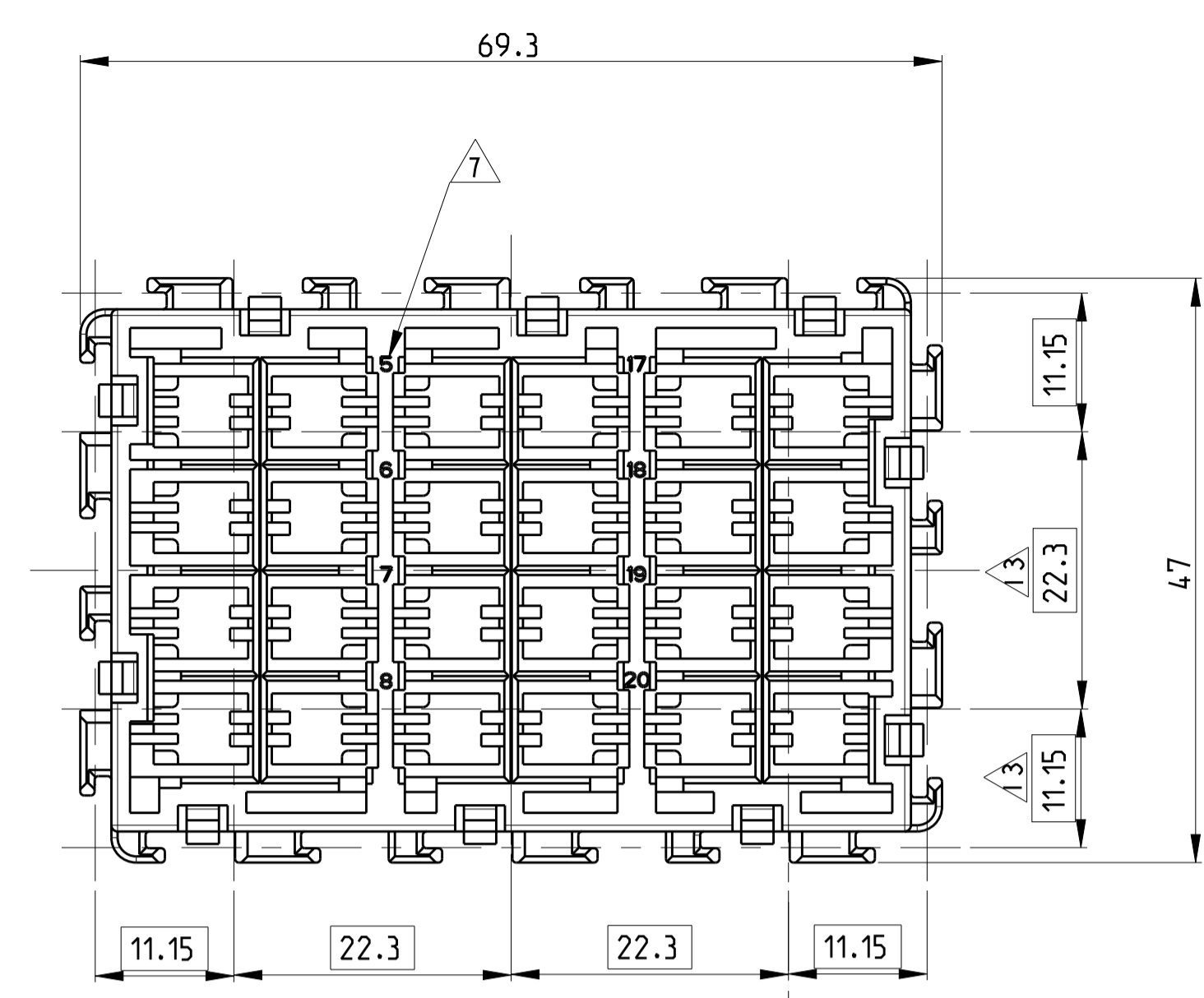
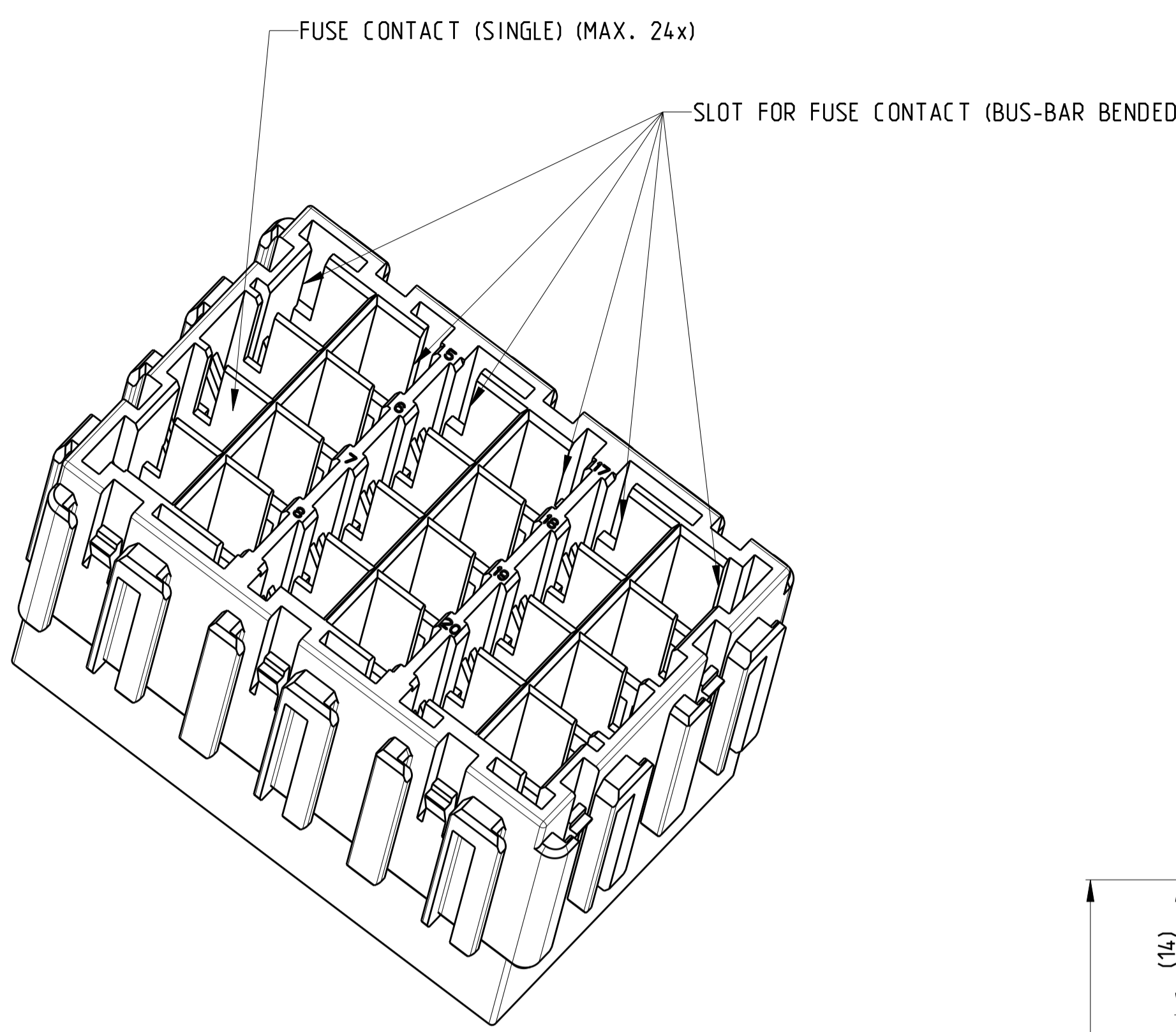


| LOC | DIST | REVISIONS | | | | | |
|-----|------|-----------|-----|---------------|-----------|------|------|
| | | P | LTR | DESCRIPTION | DATE | DWN | APVD |
| A1 | - | A | | NEW DRAWING | 13SEP2010 | Neu. | - |
| | | A1 | | ECR-19-015112 | 30SEP2019 | SRN | PT |



- NOTES
- 1 TE LOGO
 - 2 TE ORDER NUMBER
 - 3 MATERIAL MARKING
 - 4 PRODUCTION DATE
 - 5 TOOL CAVITY MARKING
 - 6 SLOT MARKING
 - 7 CAVITY MARKING
 - 8 REVISION NUMBER
 - 9 PACKAGING: BULK MATERIAL IN CARD BOARD BOX
 - 10 PARTS ARE TO BE FREE OF SCRATCHES DISCOLORATION, SALT RESIDUE OR OTHER IMPERFECTIONS THAT MAY AFFECT FUNCTION OR FIT OF PART
 - 11
 - 12 OVER VIEW PRODUCT GROUP SEE : 114-94092
 - 13 SYSTEM PITCH DIMENSION'S FOR MULTIPLE PLUG IN SYSTEM
 - 14 PLEASE NOTE: MAX. CURRENT CARRYING CAPACITY OF MODULE SEE: 108-94263

| | | | | | |
|--------------------|-------------|----------|-------------------------|-------------|----------------|
| 881572-3 (4-WAY) | | | 4.0-6.0 MM ² | BRASS | PRE TIN PLATED |
| 881572-2 (3-WAY) | | | 4.0-6.0 MM ² | BRASS | PRE TIN PLATED |
| 881572-1 (2-WAY) | | | 4.0-6.0 MM ² | BRASS | PRE TIN PLATED |
| 4-880492-3 (4-WAY) | | | 2.5-4.0 MM ² | COPPER IRON | TIN PLATED |
| 4-880492-2 (4-WAY) | | | 2.5-4.0 MM ² | BRASS | PRE TIN PLATED |
| 4-880492-1 (4-WAY) | | | 2.5-4.0 MM ² | BRASS | BLANC |
| 3-880492-3 (3-WAY) | | | 2.5-4.0 MM ² | COPPER IRON | TIN PLATED |
| 3-880492-2 (3-WAY) | | | 2.5-4.0 MM ² | BRASS | PRE TIN PLATED |
| 3-880492-1 (3-WAY) | | | 2.5-4.0 MM ² | BRASS | BLANC |
| 2-880492-3 (2-WAY) | | | 2.5-4.0 MM ² | COPPER IRON | TIN PLATED |
| 2-880492-2 (2-WAY) | | | 2.5-4.0 MM ² | BRASS | PRE TIN PLATED |
| 2-880492-1 (2-WAY) | | | 2.5-4.0 MM ² | BRASS | BLANC |
| 4-880490-2 (4-WAY) | | | 1.0-2.5 MM ² | BRASS | PRE TIN PLATED |
| 4-880490-1 (4-WAY) | | | 1.0-2.5 MM ² | BRASS | BLANC |
| 3-880490-2 (3-WAY) | | | 1.0-2.5 MM ² | BRASS | PRE TIN PLATED |
| 3-880490-1 (3-WAY) | | | 1.0-2.5 MM ² | BRASS | BLANC |
| 2-880490-2 (2-WAY) | | | 1.0-2.5 MM ² | BRASS | PRE TIN PLATED |
| 2-880490-1 (2-WAY) | | | 1.0-2.5 MM ² | BRASS | BLANC |
| TE ORDER NO | TE ORDER NO | SUPPLIER | WIRE RANGE | MATERIAL | FINISH |
| FORM | LOSE PIECE | - | MM ² | | |

RECOMMENDED TERMINAL SYSTEM: FUSE CONTACT (BUS-BAR BENT)

| | | | | | |
|-------------|-------------|----------|-------------------------|----------|----------------|
| 880399-5 | | | 2.5-5.0 MM ² | BRASS | PRE TIN PLATED |
| 880399-2 | | | 2.5-5.0 MM ² | BRASS | PRE TIN PLATED |
| 880399-1 | | | 2.5-5.0 MM ² | BRASS | BLANC |
| 880398-2 | | | 1.0-2.5 MM ² | BRASS | PRE TIN PLATED |
| 880398-1 | | | 1.0-2.5 MM ² | BRASS | BLANC |
| 880397-2 | | | 0.5-1.5 MM ² | BRASS | PRE TIN PLATED |
| 880397-1 | | | 0.5-1.5 MM ² | BRASS | BLANC |
| TE ORDER NO | TE ORDER NO | SUPPLIER | WIRE RANGE | MATERIAL | FINISH |
| FORM | LOSE PIECE | - | MM ² | | |

RECOMMENDED TERMINAL SYSTEM: FUSE CONTACT (SINGLE)

USED WITH: 12

ALLOCATED FOR: MEDIUM FUSE 30A MAX. 14

NOMINAL VOLTAGE SYSTEM: 12V

TEMPERATURE CLASS: -40 TO 85 °C

VIBRATION CLASS: 1. ON BODY OR CHASSIS

SEALED CLASS: 0

ONLY BASIC DATA FOR DETAIL SEE PRODUCT SPEC

| | | | | | | | | |
|-------------|-----|------------|------|------|-------------|----------|---------------|---------|
| 2141028-1 | A | 62 | 1 | 1x | HOUSING | PBT-GF20 | BLACK | 1 |
| TE PART NO. | REV | WEIGHT [g] | POS. | QTY. | DESCRIPTION | MATERIAL | COLOR SURFACE | ITEM NO |

THIS DRAWING IS A CONTROLLED DOCUMENT.

| | |
|-------------|--|
| DIMENSIONS: | TOLERANCES UNLESS OTHERWISE SPECIFIED: |
| mm | 0 PLC ±0.5 |
| | 1 PLC ±0.5 |
| | 2 PLC ±0.5 |
| | 4 PLC ± |
| ANGLES | ±0.2° |
| FINISH | SEE TABLE |

| | | |
|------------------|-------------|-----------|
| OWN | H. NEUMEUER | 09APR2010 |
| CHK | R. HECKER | 01SEP2010 |
| APVD | G. MUMMER | 01SEP2010 |
| PRODUCT SPEC | 108-94263 | |
| APPLICATION SPEC | 114-94090 | |
| WEIGHT | SEE TABLE | |
| CUSTOMER DRAWING | A1 00779 | C=2141028 |

NAME: MEDIUM FUSE MODULE
 12POS PART

SIZE: CAGE CODE DRAWING NO
 RESTRICTED TO

SCALE: 5:1 SHEET 1 OF 1 REV A1