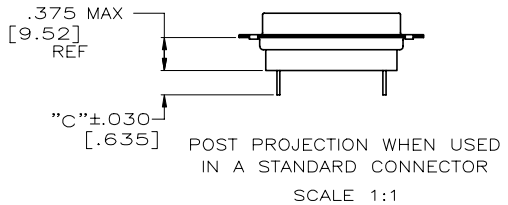
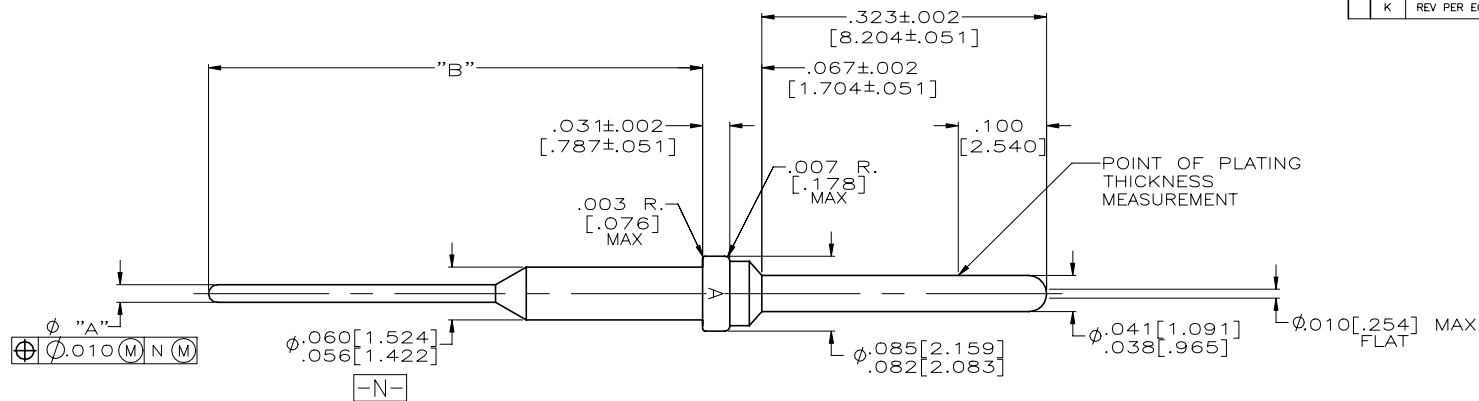


REVISIONS					
REV	DATE	BY	CHK	APPV	DESCRIPTION
K	2-2-21	CT	RL		REV PER ECO 20-017652



PRELIMINARY- NOT RELEASED FOR PRODUCTION

PRELIMINARY- NOT RELEASED FOR PRODUCTION

PRELIMINARY- NOT RELEASED FOR PRODUCTION

	DIM C	DIM B	DIM A	PART NUMBER
	.170 [4.32]	.400 [10.16]	.032/.028 [813/.7112]	2-212565-5
	.330 [8.38]	.560 [14.224]	.020/.016 [508/.406]	2-212565-3
	.330 [8.38]	.560 [14.224]	.0192/.0155 [4877/.3937]	2-212565-2
	.470 [11.94]	.700 [17.78]	.020/.016 [508/.406]	2-212565-1
	.330 [8.38]	.560 [14.224]	.020/.016 [508/.406]	1-212565-0
<b>OBSOLETE</b>	.161 [4.089]	.446 [11.328]	.042/.038 [1067/.965]	212565-9
<b>OBSOLETE</b>	.161 [4.089]	.446 [11.328]	.032/.028 [813/.7112]	212565-8
<b>OBSOLETE</b>	.161 [4.089]	.446 [11.328]	.026/.022 [660/.559]	212565-7
<b>OBSOLETE</b>	.130 [3.302]	.415 [10.541]	.042/.038 [1067/.965]	212565-6
<b>OBSOLETE</b>	.130 [3.302]	.415 [10.541]	.032/.028 [813/.7112]	212565-5
<b>OBSOLETE</b>	.130 [3.302]	.415 [10.541]	.026/.022 [660/.559]	212565-4
<b>OBSOLETE</b>	.098 [2.489]	.383 [9.728]	.042/.038 [1067/.965]	212565-3
<b>OBSOLETE</b>	.098 [2.489]	.383 [9.728]	.032/.028 [813/.7112]	212565-2
<b>OBSOLETE</b>	.098 [2.489]	.383 [9.728]	.026/.022 [660/.559]	212565-1
	DIM C	DIM B	DIM A	PART NUMBER

- 1. CONTACT BODY MAT'L: LEADED NICKEL COPPER (PROPRIETARY) EQUIVALENT ALTERNATE MAT'L: COPPER ALLOY PER ASTM-B-197
- 2. FINISH: PLATED GOLD PER MIL-G-45204 TYPE II, GRADE C CLASS 1 OVER COPPER PER MIL-C-14550, CLASS IV.
- 3. FOR USE IN P.C. BOARD.
- 4. CONTACT CAN BE USED IN ANY STANDARD HD-20 PLUG CONNECTOR.
- 5. INSERTION/EXTRACTION TOOL AMP P/N 91067-2.
- 6. CONTACTS MEET ALL APPLICABLE PERFORMANCE REQUIREMENTS OF MIL-C-39029.

THIS DRAWING IS A CONTROLLED DOCUMENT.

OWN: T. ALEXANDER 11-12-91	CHK: F. KINSEY 11-18-91	APPV: F. KINSEY 11-18-91	NAME: F. KINSEY																		
DIMENSIONS: INCHES		TOLERANCES UNLESS OTHERWISE SPECIFIED:																			
<table border="1"> <tr><td>0 PLC</td><td>±</td><td>-</td></tr> <tr><td>1 PLC</td><td>±</td><td>-</td></tr> <tr><td>2 PLC</td><td>±</td><td>-</td></tr> <tr><td>3 PLC</td><td>±</td><td>.005 [0.13]</td></tr> <tr><td>4 PLC</td><td>±</td><td>-</td></tr> <tr><td>ANGLES</td><td>±</td><td>-</td></tr> </table>		0 PLC	±	-	1 PLC	±	-	2 PLC	±	-	3 PLC	±	.005 [0.13]	4 PLC	±	-	ANGLES	±	-	PRODUCT SPEC: - APPLICATION SPEC: - WEIGHT: 0.000000 CUSTOMER DRAWING	
0 PLC	±	-																			
1 PLC	±	-																			
2 PLC	±	-																			
3 PLC	±	.005 [0.13]																			
4 PLC	±	-																			
ANGLES	±	-																			
MATERIAL: - 1		FINISH: - 2																			

TE Connectivity  
 POSTED PIN, AMPLIMITE, SIZE 20  
 SIZE: A2 CAGE CODE: 00779 DRAWING NO: 212565  
 SCALE: 10:1 SHEET: 1 of 1 REV: K