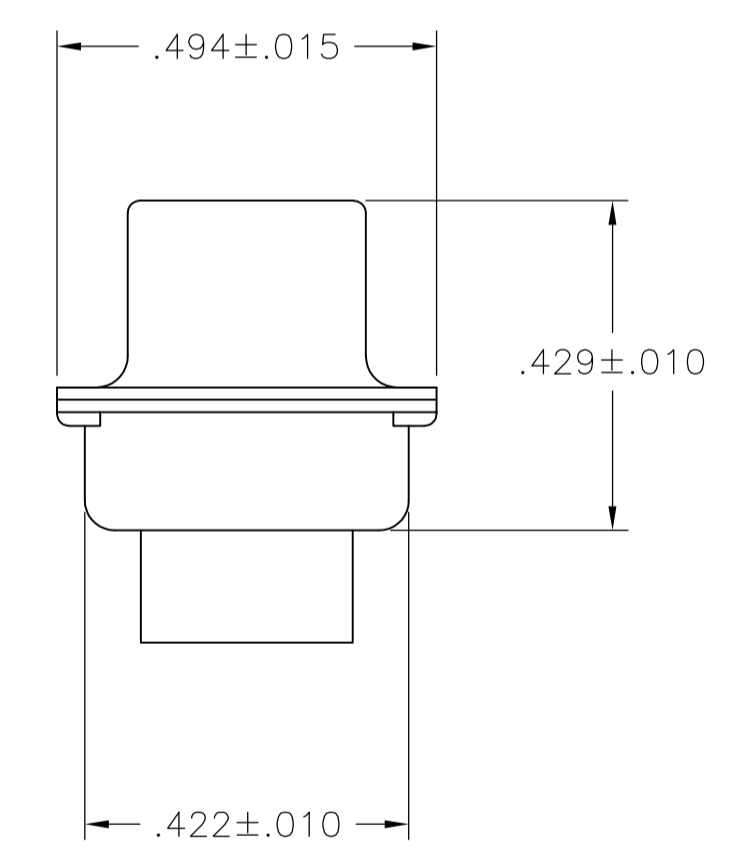
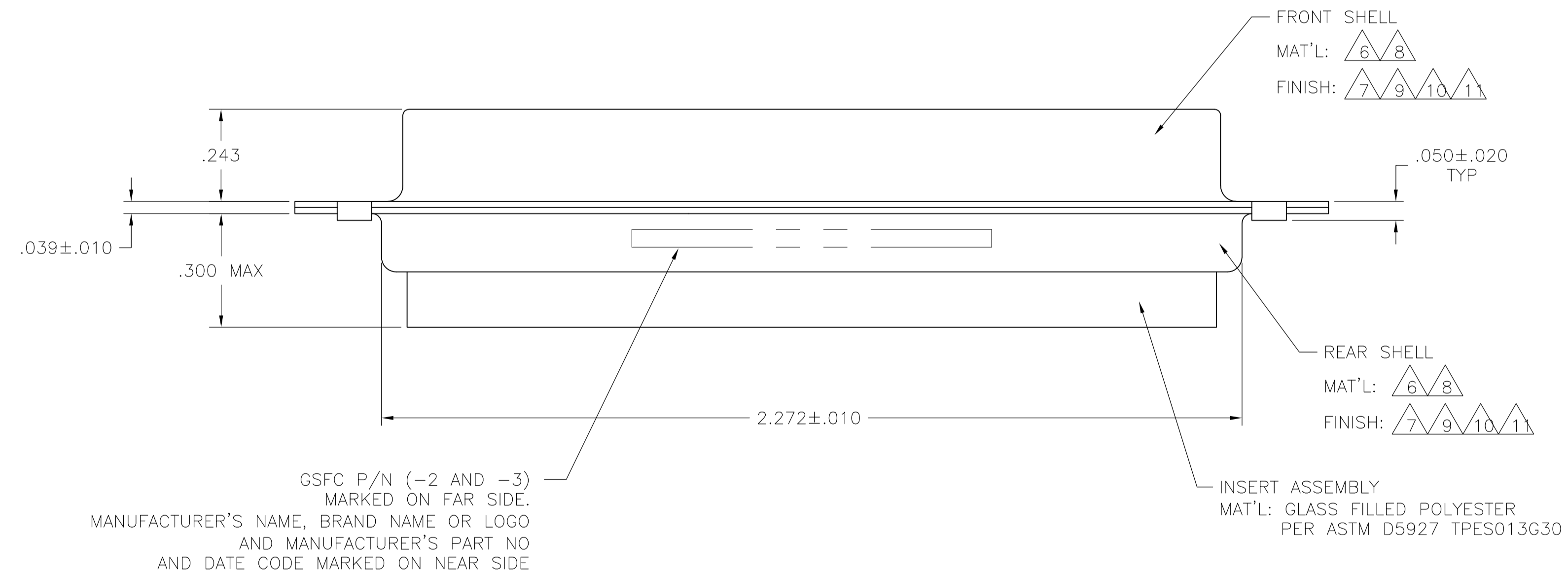
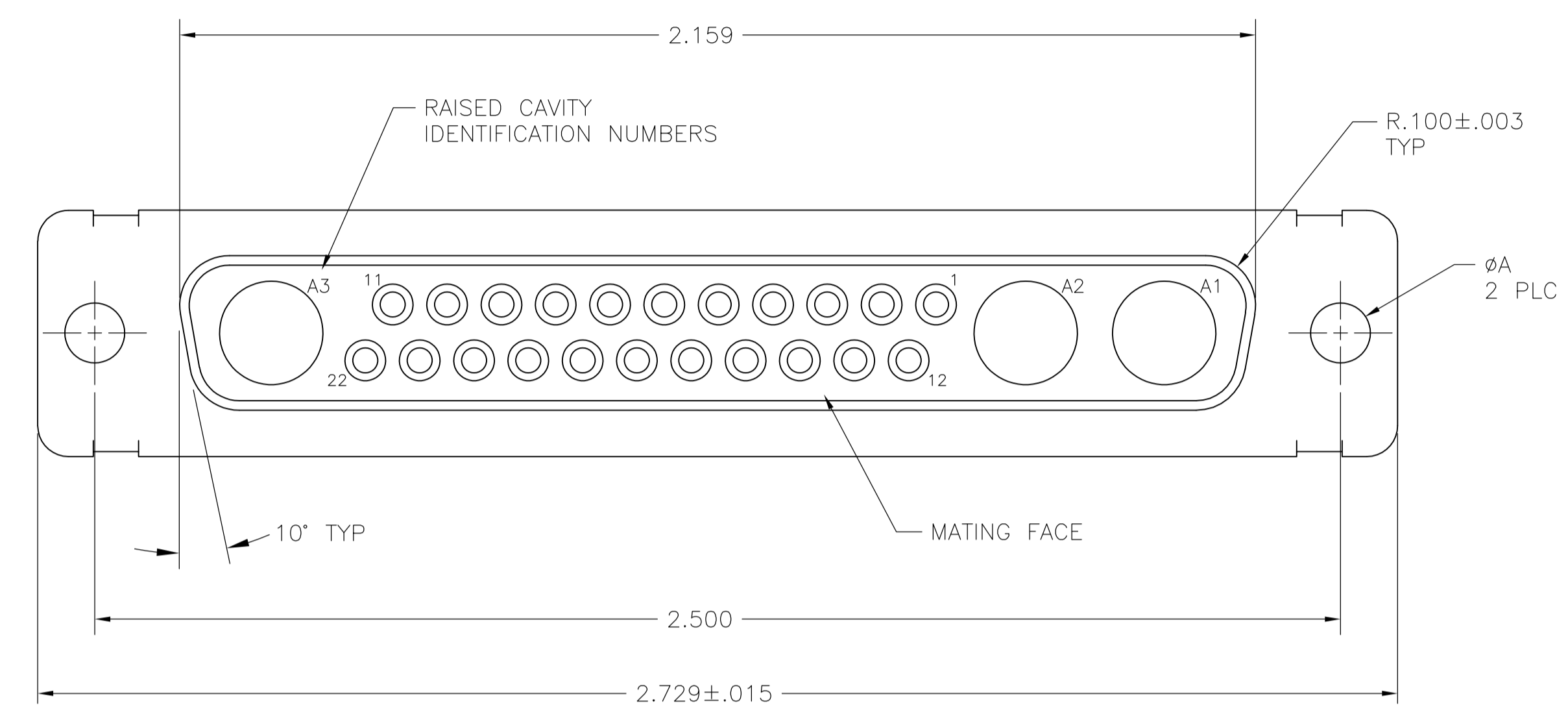


LOC		DIST		REVISIONS			
P	LTR	DESCRIPTION	DATE	DN	APVD		
U		REV PER ECO 15-016251	11-12-15	CT	CD		

1. THIS RECEPTACLE WILL MATE WITH ANY 25C3, SIZE 4 PLUG IN AMPLIMITE SERIES.
2. MAXIMUM WIRE INSULATION TO BE USED WITH THIS RECEPTACLE IS $\phi.072$.
3. RETENTION CLIPS (22) ARE INCLUDED IN INSERT ASSEMBLY.
4. THIS CONNECTOR ACCEPTS SIZE 20 SOCKET CONTACTS, NOT PROVIDED, IN CAVITIES 1 THRU 22.
5. CAVITIES A1 THRU A3 ACCEPTS SIZE 8 POWER, OR COAX SOCKET CONTACTS, NOT PROVIDED. RIGHT ANGLE COAX CONTACTS WILL NOT SEAT IN THIS CONNECTOR.

- 6 MATERIAL: STEEL PER ASTM-A-109.
- 7 FINISH: CADMIUM PLATED PER QQ-P-416, TYPE II, CLASS 2.
- 8 MATERIAL: BRASS PER ASTM-B-36.
- 9 FINISH: GOLD PER MIL-G-45204 TYPE II, GRADE C, CLASS 1 OVER COPPER PER MIL-C-14550, CLASS IV.
- 10 FINISH: TIN PER ASTM-B-545 .000400 MIN THK OVER COPPER PER AMS2418 .000050 MIN THK.
- 11 FINISH: ZINC PLATE PER ASTM-B-633 .000200-.000400 THK WITH SUPPLEMENTARY CHROMATE (Cr3+).



REMARKS	ØA	GSFC P/N	PART NO.
6, 10	.120	-	5-208551-4
6, 11	.120	-	5-208551-1
6, 10	.120	-	208551-4
8, 9	.154	311P405-20S-B-15	208551-3
8, 9	.120	311P405-20S-B-12	208551-2
6, 7	.120	-	208551-1

THIS DRAWING IS A CONTROLLED DOCUMENT. **STE** TE Connectivity

APPROVED: T. SHUEY 07JAN88
 CHK: A. EMADI 27JAN88
 NAME: RECEPTACLE ASSEMBLY AMPLIMITE 25C3 SIZE 4, SERIES 109, COAX MIX

DIMENSIONS: INCHES. TOLERANCES UNLESS OTHERWISE SPECIFIED:
 0 PLC ± -
 1 PLC ± -
 2 PLC ± -
 3 PLC ± .005(0.13)
 4 PLC ± ± 0', 30'

MATERIAL: SEE TABLE. FINISH: SEE TABLE. WEIGHT: -. SIZE: A1. CUSTOMER DRAWING. SCALE: 4:1. SHEET: 1 OF 1. REV: U.