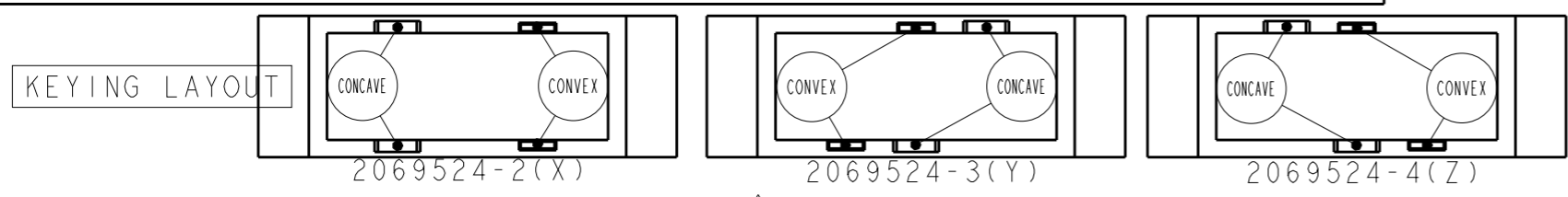
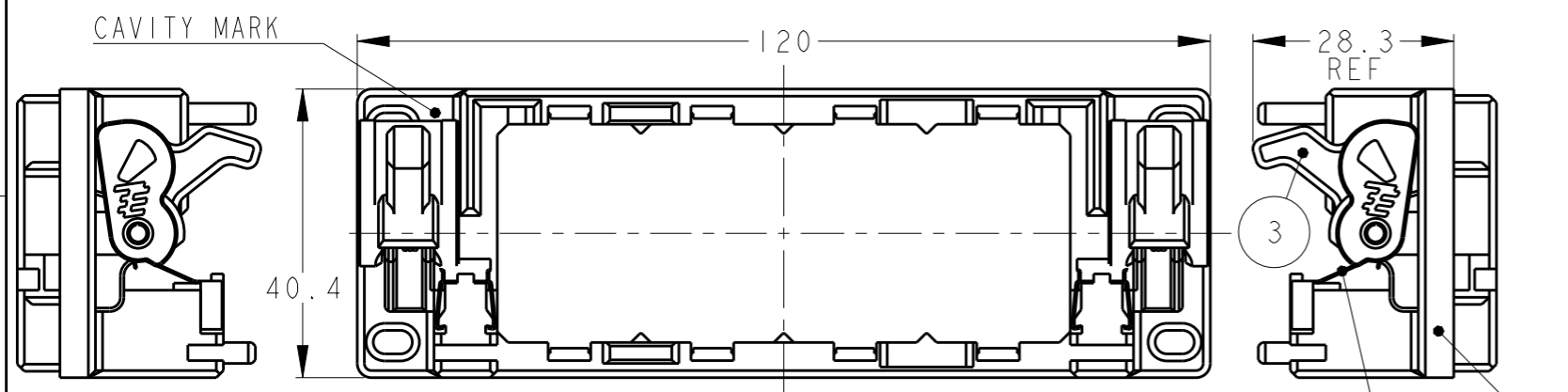
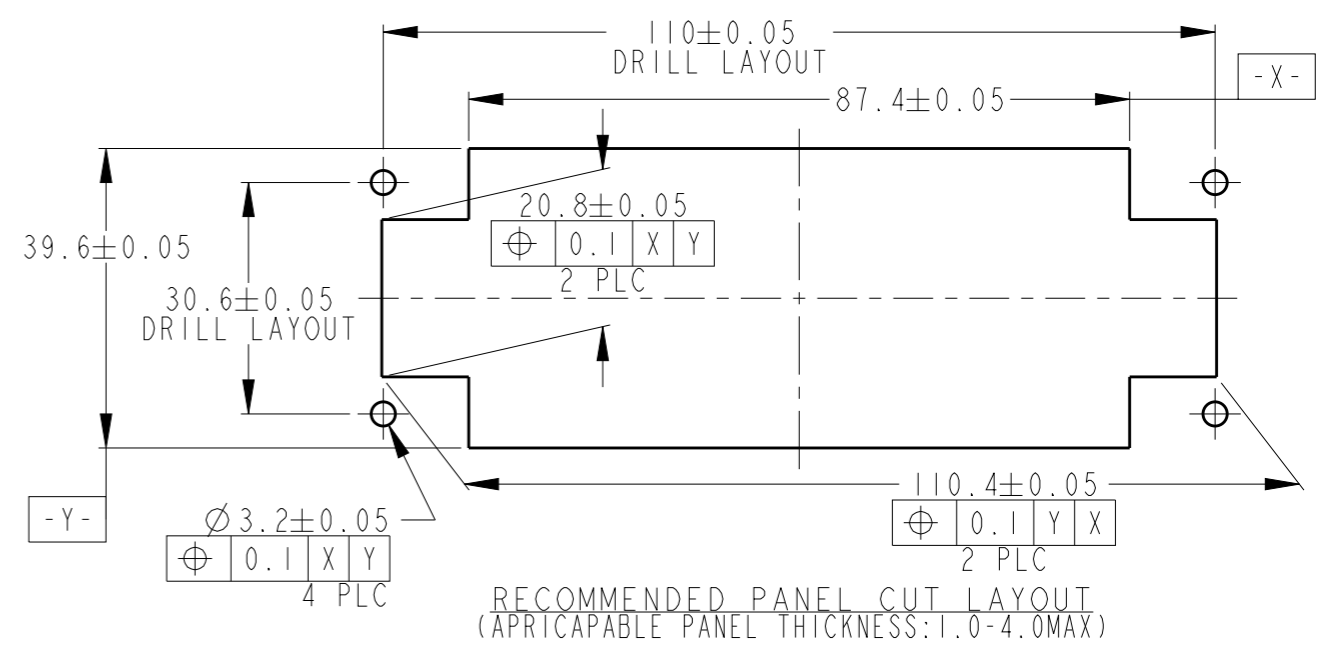
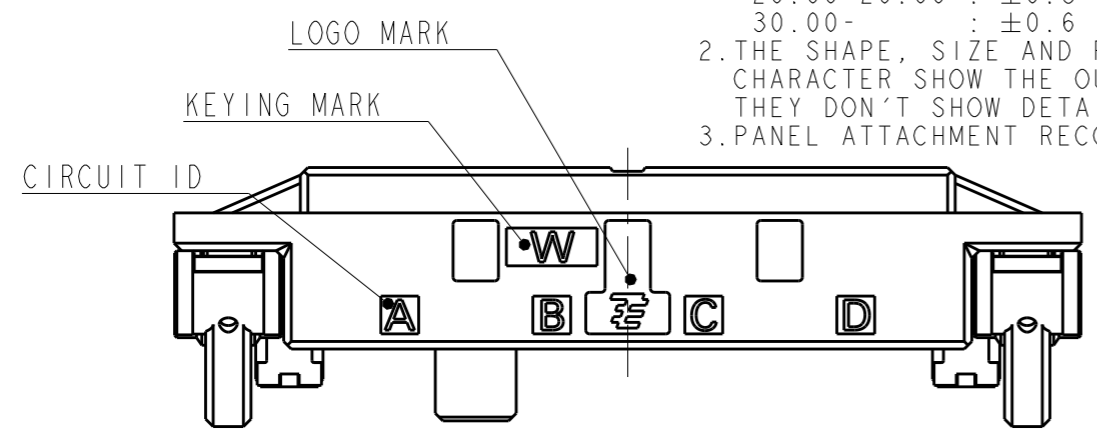


THIS DRAWING IS UNPUBLISHED. RELEASED FOR PUBLICATION 20
COPYRIGHT 20 BY - ALL RIGHTS RESERVED.

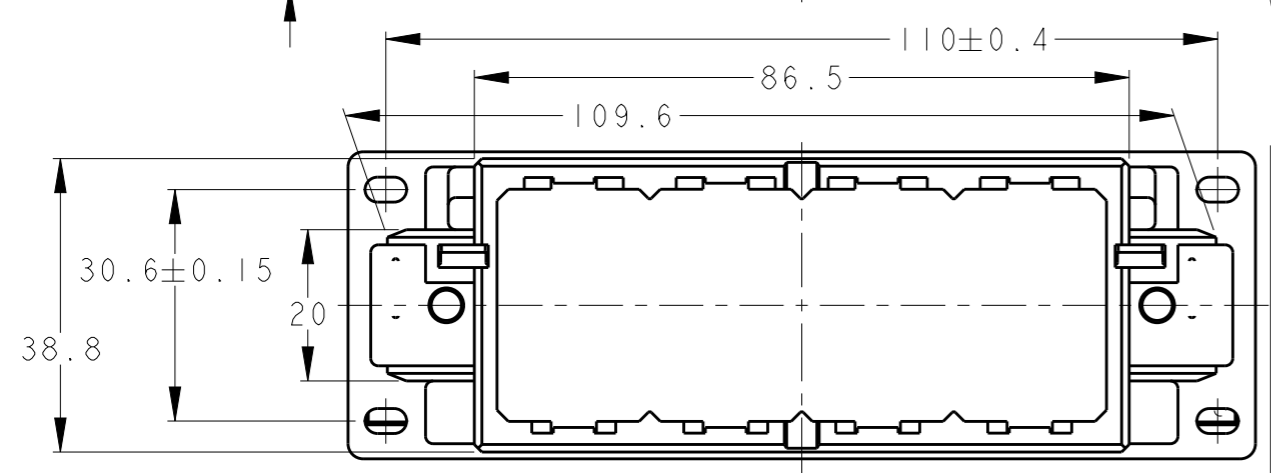
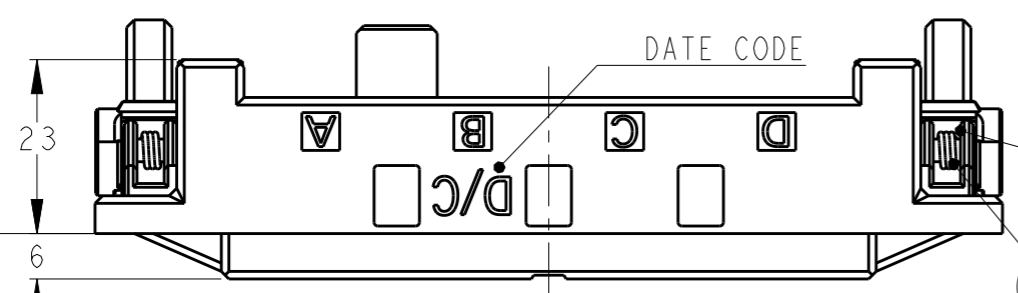
| REVISIONS 変更 | | | | | |
|-----------------|-----|-----------------------|-----------|-----|------|
| P | LTR | DESCRIPTION | DATE | DWN | APVD |
| | B | REVISED ECR-15-008620 | 25JUN2015 | K.K | E.T |



1. GENERAL TOLERANCES: SEE FOLLOWS
 0.00- 9.00 : ±0.3
 10.00-19.00 : ±0.4
 20.00-29.00 : ±0.5
 30.00- : ±0.6
2. THE SHAPE, SIZE AND POSITION OF THE CHARACTER SHOW THE OUTLINE. THEY DON'T SHOW DETAILS.
3. PANEL ATTACHMENT RECOMMENDATION SCREW: M3



| KEY | Z | I | X | Y | MATERIAL | DESCRIPTION | ITEM |
|-----|-----------|-----------|-----------|-----------|--|---------------------|------|
| | | | | | GLASS FILED THERMO PLASTIC POLYESTER(94V-0), COLOR:BLACK | PANEL FRAME HSG (Z) | 5 |
| | | | | | | PANEL FRAME HSG (Y) | 5 |
| | | | | | | PANEL FRAME HSG (X) | 5 |
| | | | | | | PANEL FRAME HSG (W) | 5 |
| | 2 | 2 | 2 | 2 | STEEL | FRAME LOCK PLATE | 4 |
| | 2 | 2 | 2 | 2 | GLASS FILED THERMO PLASTIC POLYESTER(94V-0), COLOR:BLACK | SHIFT LEVER | 3 |
| | 2 | 2 | 2 | 2 | STEEL | SPRING PIN | 2 |
| | 2 | 2 | 2 | 2 | STEEL | TWIST SPRING | 1 |
| | 2069526-4 | 2069526-3 | 2069526-2 | 2069526-1 | | | |



THIS DRAWING IS A CONTROLLED DOCUMENT.

DWN M. MAEBASHI 07OCT2009
 CHK N. YAMASAKI 07OCT2009
 APVD T. KIMURA 07OCT2009

DIMENSIONS: 単位: 概 mm
 TOLERANCES UNLESS OTHERWISE SPECIFIED
 一般公差 ± -
 0 PLC ±
 1 PLC ±0.1
 2 PLC ±0.02
 3 PLC ±0.005
 4 PLC ±0.0005
 ANGLES ±
 FINISH 仕上 -

MATERIAL 材料 SEE TABLE

PRODUCT SPEC 108-78644
 APPLICATION SPEC 取付適用規格 -
 WEIGHT 40.0 g

STE TE Connectivity

NAME 名称 DYNAMIC HIGH DENSITY FRAME PANEL FRAME ASSEMBLY 4 MODULES

SIZE A3 CAGE CODE 00779 DRAWING NO. 番号 C-2069526 RESTRICTED TO -

CUSTOMER DRAWING SCALE 尺度 1:1 SHEET 1 OF 1 REV B