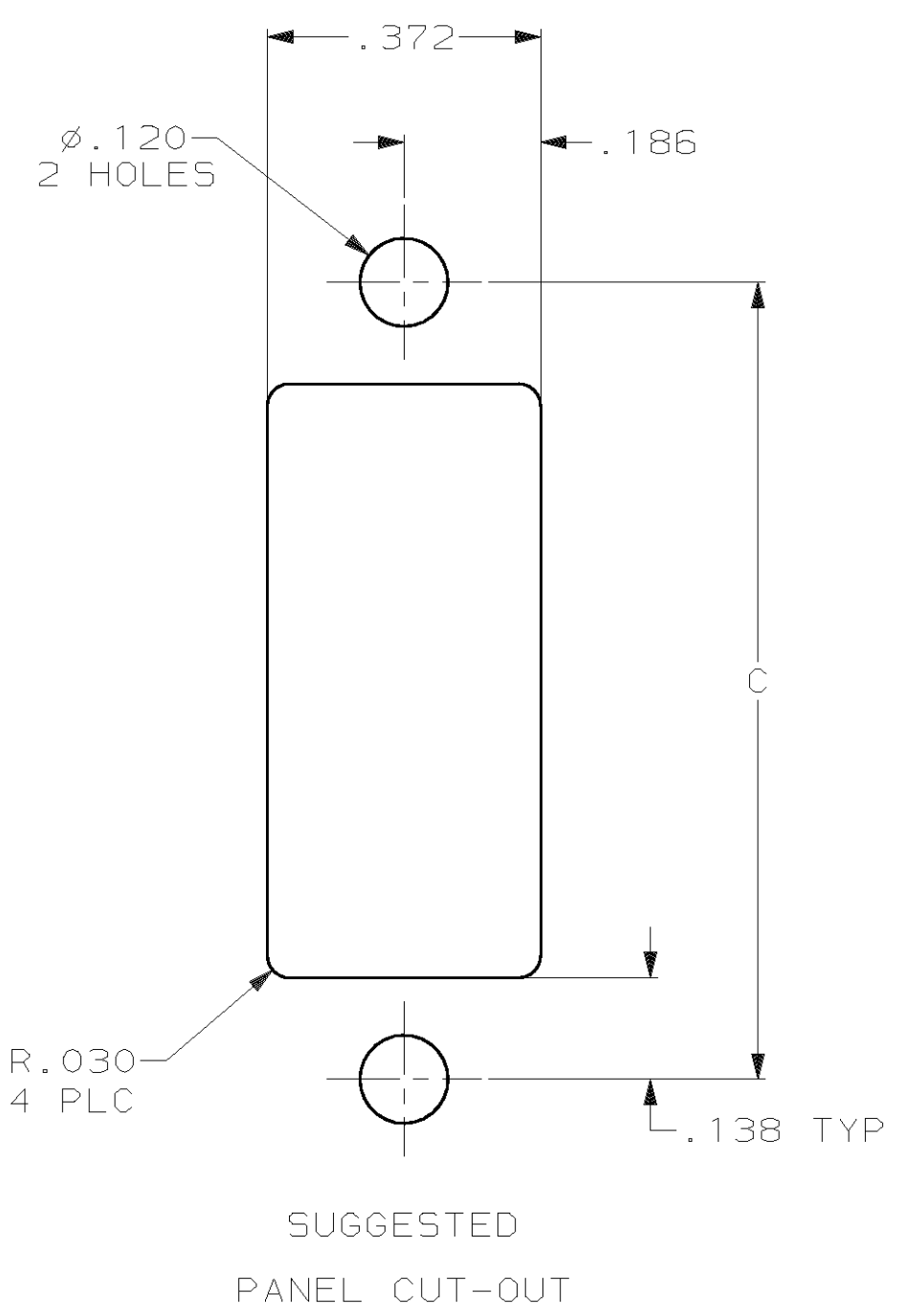
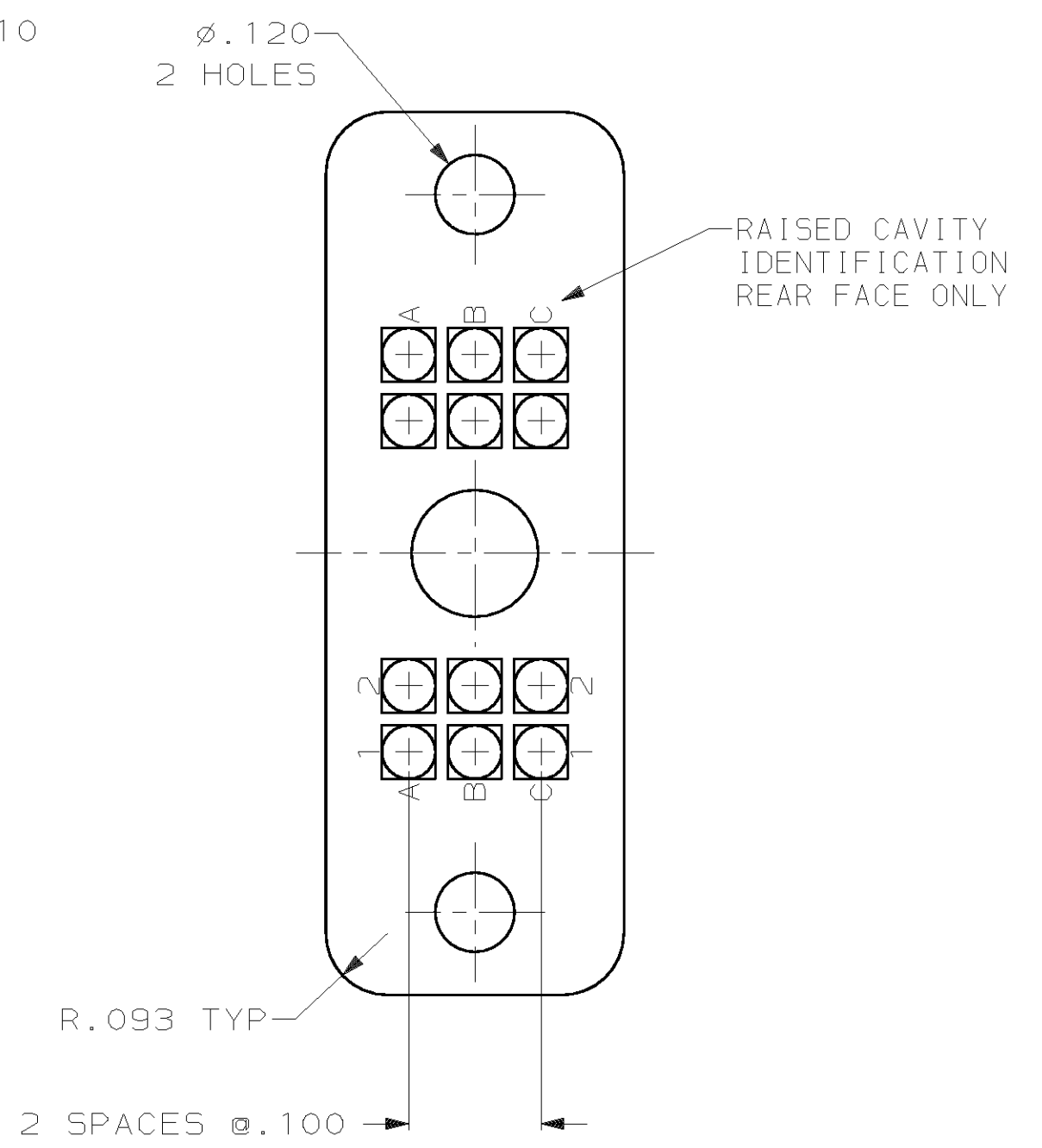
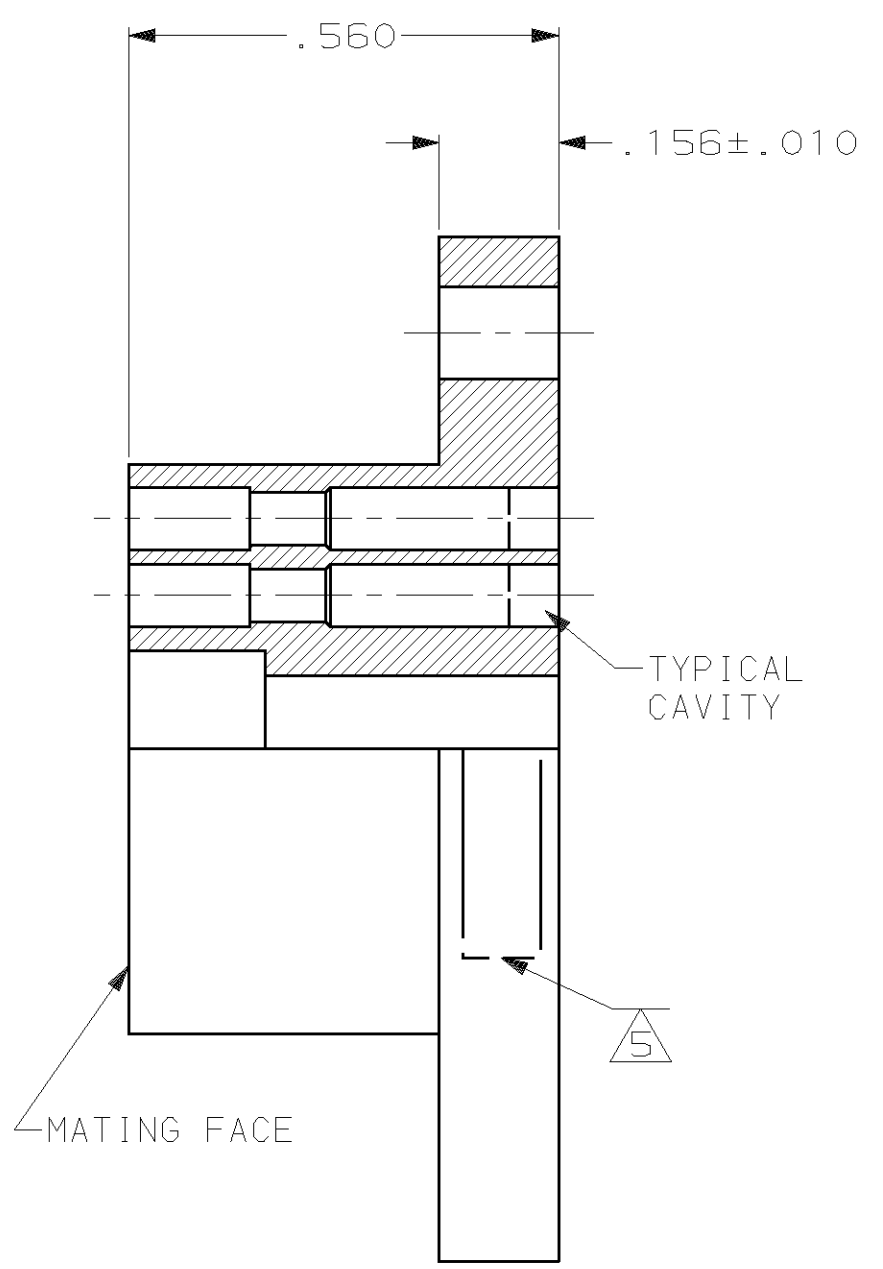
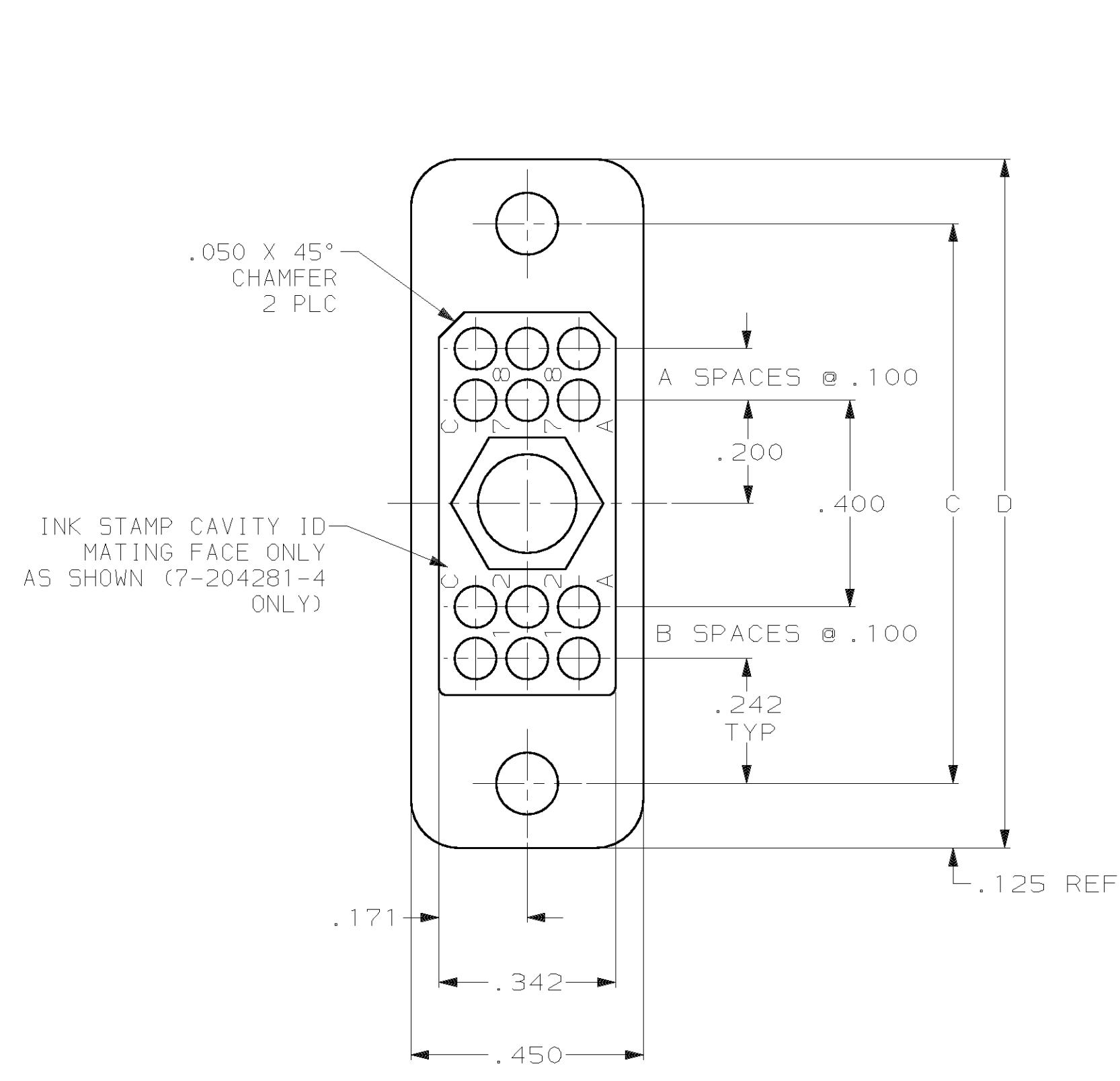


LOC		DIST		P		F		ZONE		LTR		REVISIONS				
DF	CO											DESCRIPTION	DATE	APPD		
												J	REV PER 063D-0276-01	CT	7-02	JM

- CONTACT CAVITY WILL ACCEPT TYPE XI PIN OR SOCKET & TYPE XI AUTOWIRING PIN OR SOCKET.
- MATL: BLACK PHENOLIC.
- MATES WITH 204282.
- MATL: BLUE DIALLYL PHTHALATE.
- "AMP", DATE CODE & PART NUMBER MARKED ON EITHER SIDE (SEE DASH NO).



	1.734	1.484	7	7	4	24	7-204281-4
	2.534	2.284	7	7	4	48	2-204281-8
OBS	2.334	2.084	6	6	4	42	2-204281-7
	2.134	1.884	5	5	4	36	2-204281-6
OBS	1.934	1.684	4	4	4	30	2-204281-5
	1.734	1.484	3	3	4	24	2-204281-4
OBS	1.534	1.284	2	2	4	18	2-204281-3
	1.334	1.084	1	1	4	12	2-204281-2
OBS	1.134	.884	-	-	4	6	2-204281-1
	2.534	2.284	7	7	2	48	204281-8
OBS	2.334	2.084	6	6	2	42	204281-7
	2.134	1.884	5	5	2	36	204281-6
OBS	1.934	1.684	4	4	2	30	204281-5
	1.734	1.484	3	3	2	24	204281-4
OBS	1.534	1.284	2	2	2	18	204281-3
	1.334	1.084	1	1	2	12	204281-2
OBS	1.134	.884	-	-	2	6	204281-1

D	C	B SPACES	A SPACES	MATERIAL	NO. OF POSITIONS	PART NO.
SEE DASH NO						

DO NOT SCALE PRINT. UNLESS SPECIFIED DIMENSIONS IN mm (INCHES) TOLERANCES ON:		DR 06-17-94 T. THOMPSON		AMP Incorporated Harrisburg, PA 17105-3608
2 PLC DEC ±		CHK 06-21-94 D. MUMMEY		
3 PLC DEC ± .005		APPD 06-21-94 D. MUMMEY		
ANGLES ±		APPD 06-21-94 D. MUMMEY		
MATERIAL	SEE DASH NO	PRODUCT SPEC		NAME
FINISH		APPLICATION SPEC		PLUG, HDR SERIES
WEIGHT				FOR JACKSCREW, AUTOMATIC WIRING & TYPE XI
SIZE	D	CAGE CODE	00779	DRAWING NO
SCALE	4:1			C-204281
				SHEET
				1 OF 1

THIS DRAWING IS A CONTROLLED DOCUMENT FOR AMP INCORPORATED. IT IS SUBJECT TO CHANGE AND THE CONTROLLING ENGINEERING ORGANIZATION SHOULD BE CONTACTED FOR THE LATEST REVISION.