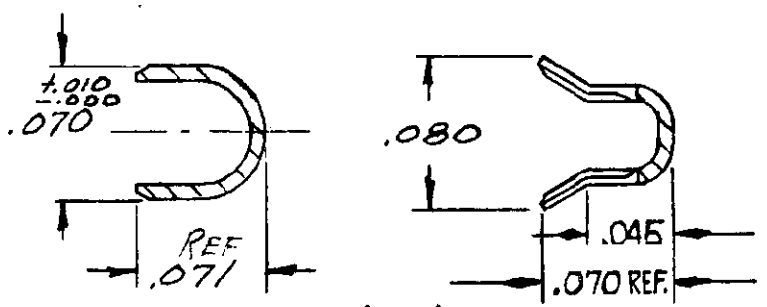
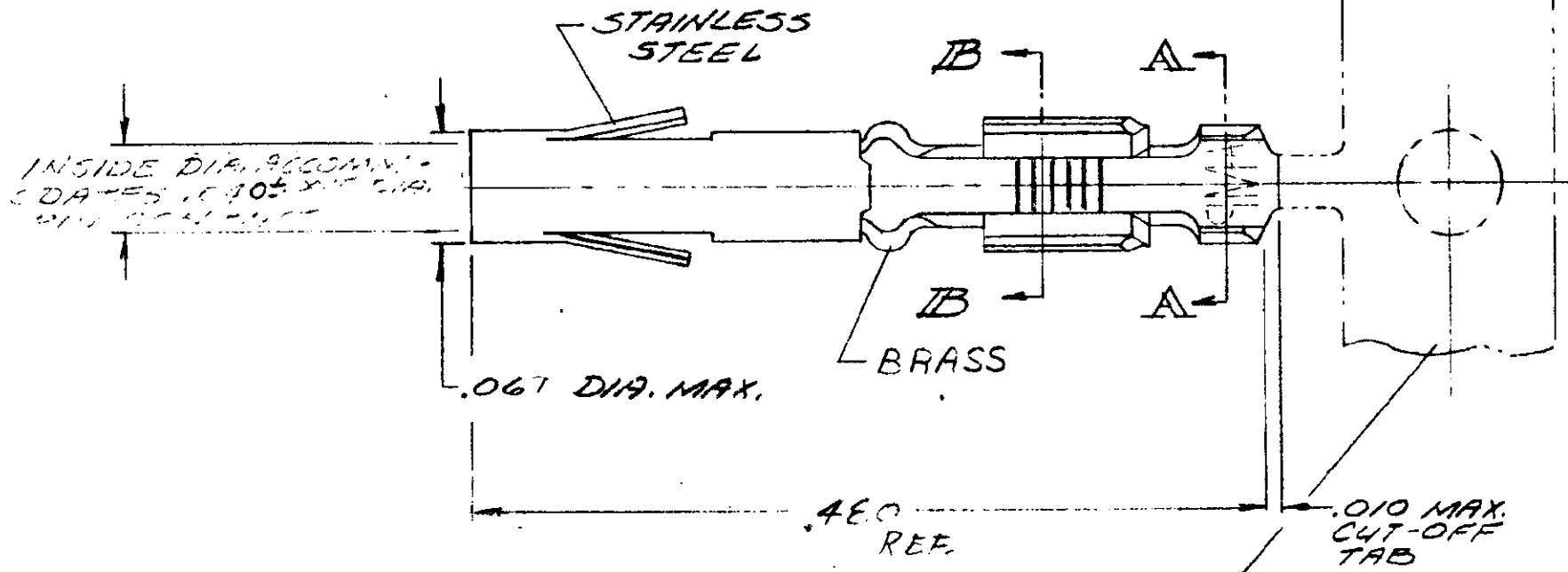


NUMBER 203875

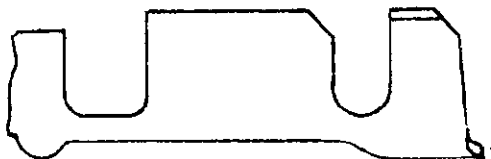
©1948 BY AMP INCORPORATED. ALL RIGHTS RESERVED. AMP PRODUCTS COVERED BY PATENTS AND/OR PATENTS PENDING.

REVISIONS				DATE	APPROVED
ZONE	LTR	DESCRIPTION			
M		REVISED	2-25-68		AMP



- 203875-1 1. AS SHOWN
2. STRIP PART
3. BODY-BRASS; .000030 AU. / .000050 NI. SLEEVE, STAINLESS STEEL.
- 203875-2 1. SAME AS -1, EXCEPT: ①
2. BODY, SELECTIVE .000030 AU. / .000050 NI.
- 203875-3 1. SAME AS -1, EXCEPT:
2. LOOSE PIECE PART
- 203875-4 1. SAME AS -2, EXCEPT:
2. LOOSE PIECE PART
- 203875-5 1. SAME AS -1, EXCEPT:
2. BODY, TIN PLATED ① ②
- 203875-6 1. SAME AS -5, EXCEPT:
2. LOOSE PIECE PART ① ②
- 203875-7 1. SAME AS -1 EXCEPT:
2. BODY SELECTIVELY PLATED .000015 GOLD / .000050 NI. ①
- 203875-8 1. SAME AS -7 EXCEPT:
2. LOOSE PIECE PART.
- ② 203875-9 1. SAME AS -2 EXCEPT:
2. REVERSE FEEL FOR TAIL LAMP APPLICATOR.

CARRIER STRIP FOR -1, -2 & -5 PARTS



- ① OBSOLETE 1. SAME AS -3 EXCEPT:
2. CUSTOMER PART NO. TO BE ON INNERMOST PACKAGE.
- ② OBSOLETE 1. SAME AS -1 EXCEPT:
2. CUSTOMER PART NO. TO BE ON INNERMOST PACKAGE.

① WIRE RANGE: 24, 26, 28 & 30 AWG
INSULATION RANGE: .048 MAX.
HAND TOOL: AMP #90223-5
EXTRACTION TOOL: AMP #91038-3
INSERTION TOOL: AMP #91042-1

⚠ CAUTION: USE OF TIN PLATED TERMINALS IN CERTAIN ENVIRONMENTS MAY CAUSE NON-CONFORMANCE TO AMP PRODUCT SPECIFICATION 108-10015.

UNLESS OTHERWISE SPECIFIED DIM. ARE IN INCHES. TOLERANCES ON: DECIMALS ± .005 ANGLES ± °		CONTRACT NO.		AMP INCORPORATED HARRISBURG, PENNSYLVANIA	
MATERIAL		DR WYCHECK 1-26-68		NAME CONTACT ASSY - SOCKET ①	
SEE DASH NO.		CHK QJM 2-5-68		SIZE B	
HEAT TREAT		APPD M. Hagan 2-5-68		CODE IDENT NO. 00779	
FINISH SEE DASH NO.		DSGN APPD V		NUMBER 203875	
OTHER APPD R. H. Hight 2/4/68		SCALE 10-1		WT CALC ACTUAL	
LOC		PRINT DIST		SHEET 1 OF 1	

CUSTOMER DRAWING