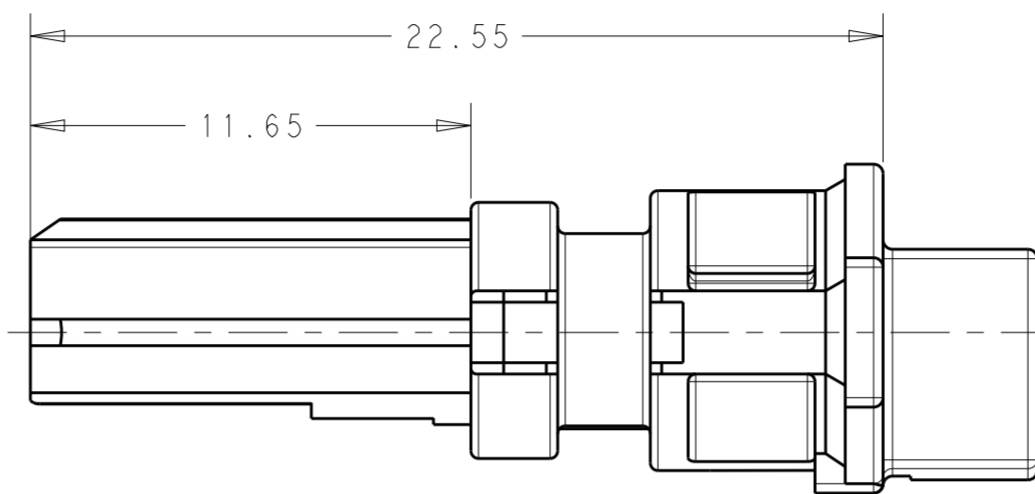
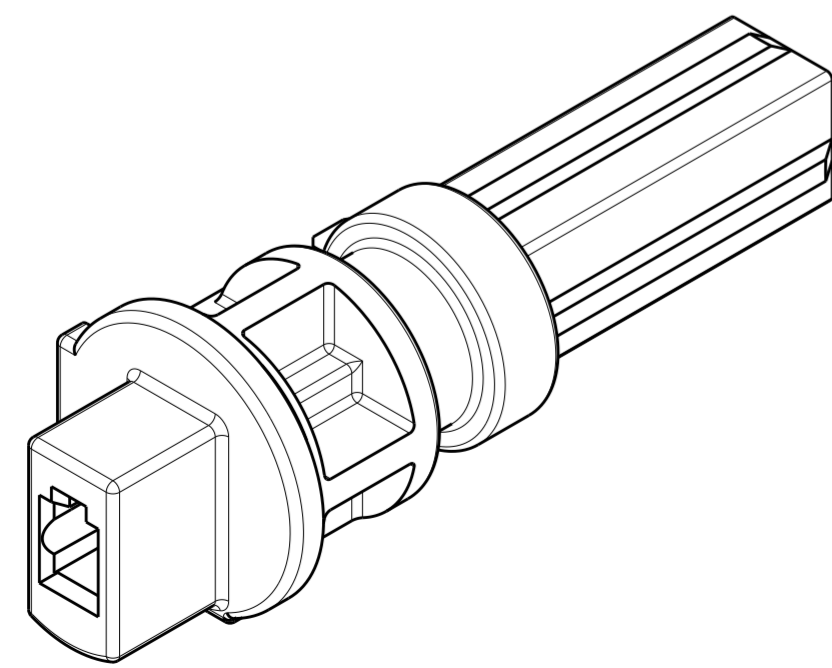
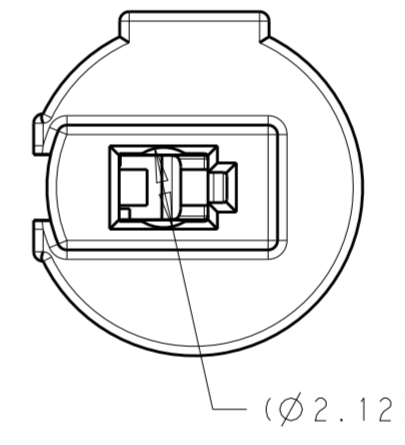
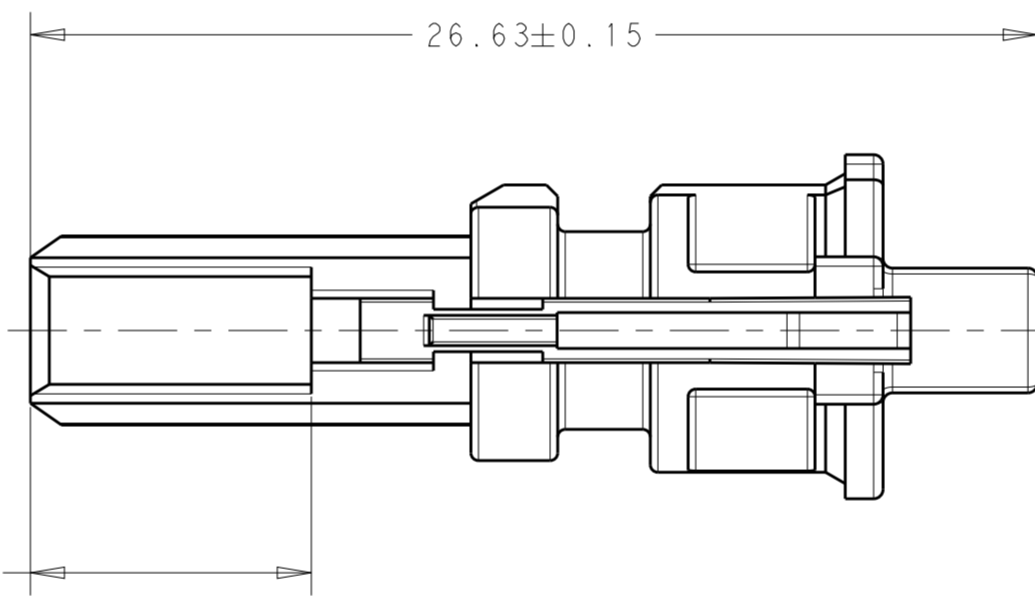
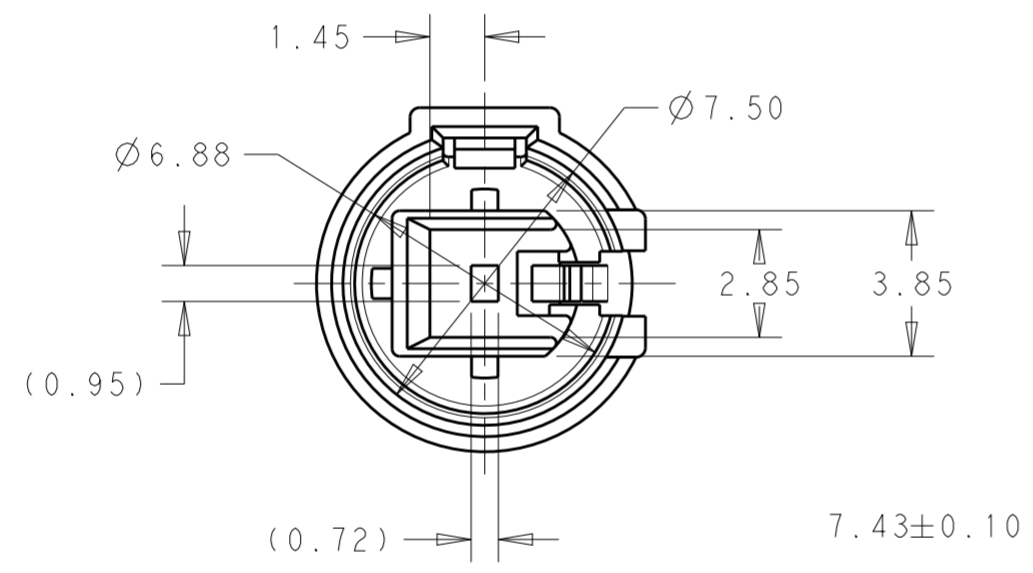


THIS DRAWING IS UNPUBLISHED. RELEASED FOR PUBLICATION 20
 © COPYRIGHT 20 BY - ALL RIGHTS RESERVED.

LOC	DIST	REVISIONS					
GE	00	P	LTR	DESCRIPTION	DATE	DWN	APVD
		A		RELEASED	25SEP2009	KP	LV
		B		ECO-13-002492	12FEB2013	KP	LV
		C		ECO-13-009982	17JUN2013	KP	LV



1 MATERIAL: NYLON 6/6, GRAY, ULTRAMID A3EG7, 35% GLASS FILLED. BLENDED WITH 25% MAX REGRIND.
 2. HOUSING IS DESIGNED FOR MALE TERMINAL 1924275 WITH MAX WIRE INSULATION O.D. OF 2.0mm.



ISOMETRIC VIEW
SCALE 5:1

2035306-1
PART NUMBER

THIS DRAWING IS A CONTROLLED DOCUMENT.		DWN K. PETERSON 25SEP2009	TE Connectivity	
DIMENSIONS: mm		CHK L. VARSIK		
		APVD L. VARSIK	PRODUCT SPEC	INSERT, JACK, GENERATION Y HYBRID, FAKRA IV FOR MALE TERMINAL 1924275
TOLERANCES UNLESS OTHERWISE SPECIFIED:		APPLICATION SPEC	SIZE	CAGE CODE
0 PLC ±-	1 PLC ±0.1	WEIGHT	A200779	DRAWING NO
2 PLC ±0.05	3 PLC ±-	Customer Drawing	C-2035306	RESTRICTED TO
4 PLC ±-	ANGLES ±1	SCALE	5:1	SHEET
FINISH			1	OF
			1	REV
				C