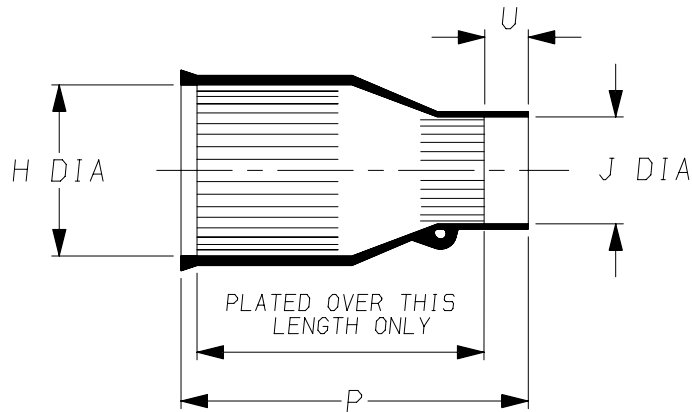


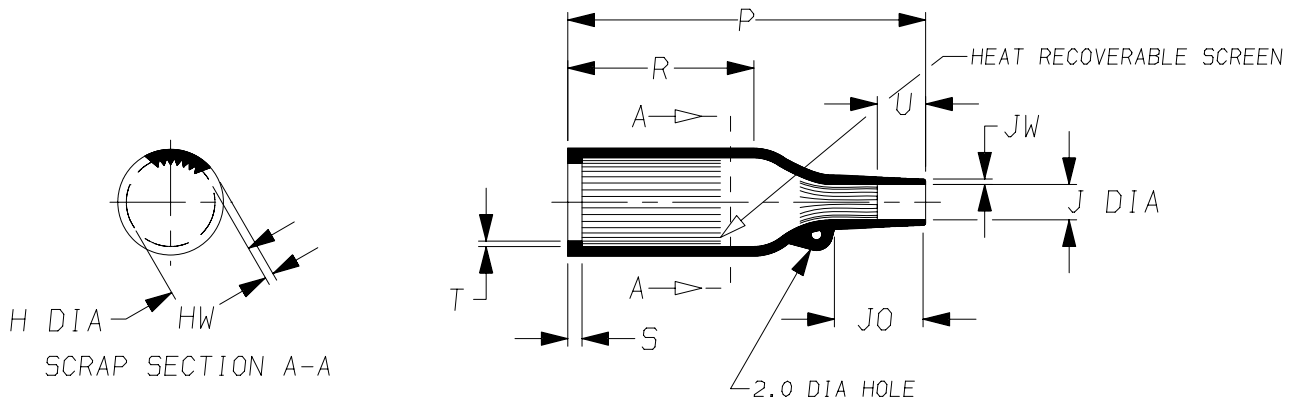
a) Part as supplied.

202K1\*\*-25S

Screened Moulded Parts



b) Part after unrestricted recovery.



DIMENSIONS in millimetres  
(in inches, for reference)

Part No.	H		J		P		R	S	T	U		JO	HW	JW
	Min a	Max b	Min a	Max b	±5% a	±10% b	REF b	REF b	REF b	MIN a	±20% b	REF b	±30% b	±30% b
202K132-25S	24 {0.94}	14.2 {0.56}	15 {0.59}	6.0 {0.24}	50 {1.97}	55 {2.17}	32 {1.26}	3.0 {0.12}	1.0 {0.04}	3.5 {0.14}	6.5 {0.26}	10 {0.39}	1.8 {0.07}	1.0 {0.04}
202K142-25S	31 {1.22}	18.0 {0.71}	18 {0.71}	8.0 {0.31}	65 {2.56}	67 {2.64}	35 {1.38}	3.0 {0.12}	1.0 {0.04}	5.0 {0.20}	9.0 {0.35}	15 {0.59}	1.8 {0.07}	1.0 {0.04}
202K153-25S	36 {1.42}	22.4 {0.88}	22 {0.87}	9.0 {0.35}	76 {2.99}	80 {3.15}	42 {1.65}	3.0 {0.12}	1.0 {0.04}	5.0 {0.20}	10.0 {0.39}	20 {0.79}	2.0 {0.08}	1.0 {0.04}
202K163-25S	43 {1.69}	28.2 {1.11}	26 {1.02}	10.5 {0.41}	96 {3.78}	99 {3.90}	61 {2.40}	3.0 {0.12}	1.7 {0.07}	6.0 {0.24}	10.0 {0.39}	20 {0.79}	2.2 {0.09}	1.2 {0.05}
202K174-25S	47 {1.85}	35.1 {1.38}	36 {1.42}	16.0 {0.63}	118 {4.65}	130 {5.12}	68 {2.68}	3.0 {0.12}	1.7 {0.07}	11.0 {0.43}	18.0 {0.71}	38 {1.50}	3.2 {0.13}	1.5 {0.06}
202K185-25S	56 {2.20}	44.5 {1.75}	42 {1.65}	16.8 {0.66}	164 {6.46}	170 {6.69}	90 {3.54}	3.0 {0.12}	2.0 {0.08}	13.5 {0.53}	20.0 {0.79}	50 {1.97}	3.2 {0.13}	2.0 {0.08}

Copyright (!)

The copyright in this drawing is the property of Tyco Electronics UK Ltd. The drawing is issued on the condition that it is not copied, reproduced or disclosed to a third party, either in whole or in part without the prior written consent of Tyco Electronics UK Ltd.

Drawn A.LILLEY. Checked

Issue 6

Date March 2008

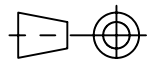
Conforms to ISO Recommendations

Approval  
Design

MKTG.

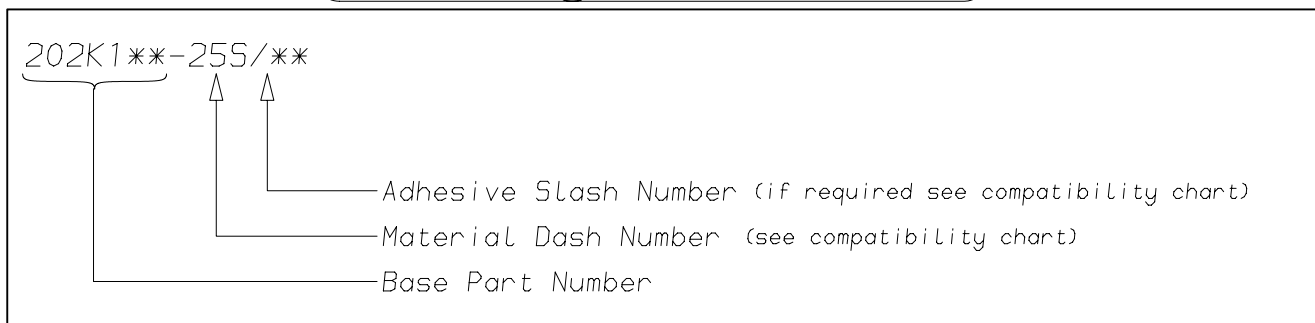
Tech.

3rd Angle Projection  
Not to Scale



<b>Raychem</b>		<b>Specification</b>	Part Number
		<b>Control Drawing</b>	202K1**-25S Issue 6
Iss.	Date	E.C.R. No.	Details of Change
4	March 1986	4648	202K185, Pb was $\pm 5\%$ , Ua was $14.0 \pm 20\%$
4	March 1986	4649	202K174, Pb was $\pm 5\%$ , Ua was $16.0 \pm 20\%$
4	March 1986	4650	202K163, Pb was $\pm 5\%$ , Ua was $7.5 \pm 20\%$
4	March 1986	4651	202K153, Pb was $\pm 5\%$ , Ua was $7.0 \pm 20\%$
4	March 1986	4652	202K142, Pb was $\pm 5\%$ , Ua was $6.0 \pm 20\%$
4	March 1986	4653	202K132, Pb was $\pm 5\%$ , Ua was $4.5 \pm 20\%$
5	June 2007	CR06-HM-012	Imperial dimensions added
6	March 2008	CR08-HM-005	Note 2 (RW spec) added

## (Ordering Information)



## (COMPATIBILITY CHART)

Material Dash Number	Material Description	SPEC Number	Coating Slash Number
-25S	ELASTOMER, FLUID RESISTANT COPPER COMPOSITE	RW-2077	/86

### NOTES

- ① As supplied dimensions are for uncoated parts, when coating is added entry diameters will reduce by 1.5mm Max.
- ② For method of measuring recovered diameter, see appropriate RW specification (SPEC Number), section 2.2,

Tyco Electronics UK Ltd. Faraday Road, Swindon, Wiltshire, SN3 5HH England Telephone: (01793) 528171 Fax: 572516	Tyco Electronics Corporation 300, Constitution Drive, Menlo Park, CA 94025 USA Telephone (650) 361-3860 Fax: (650) 361-5579
Cage Code K1010	Cage Code 06090