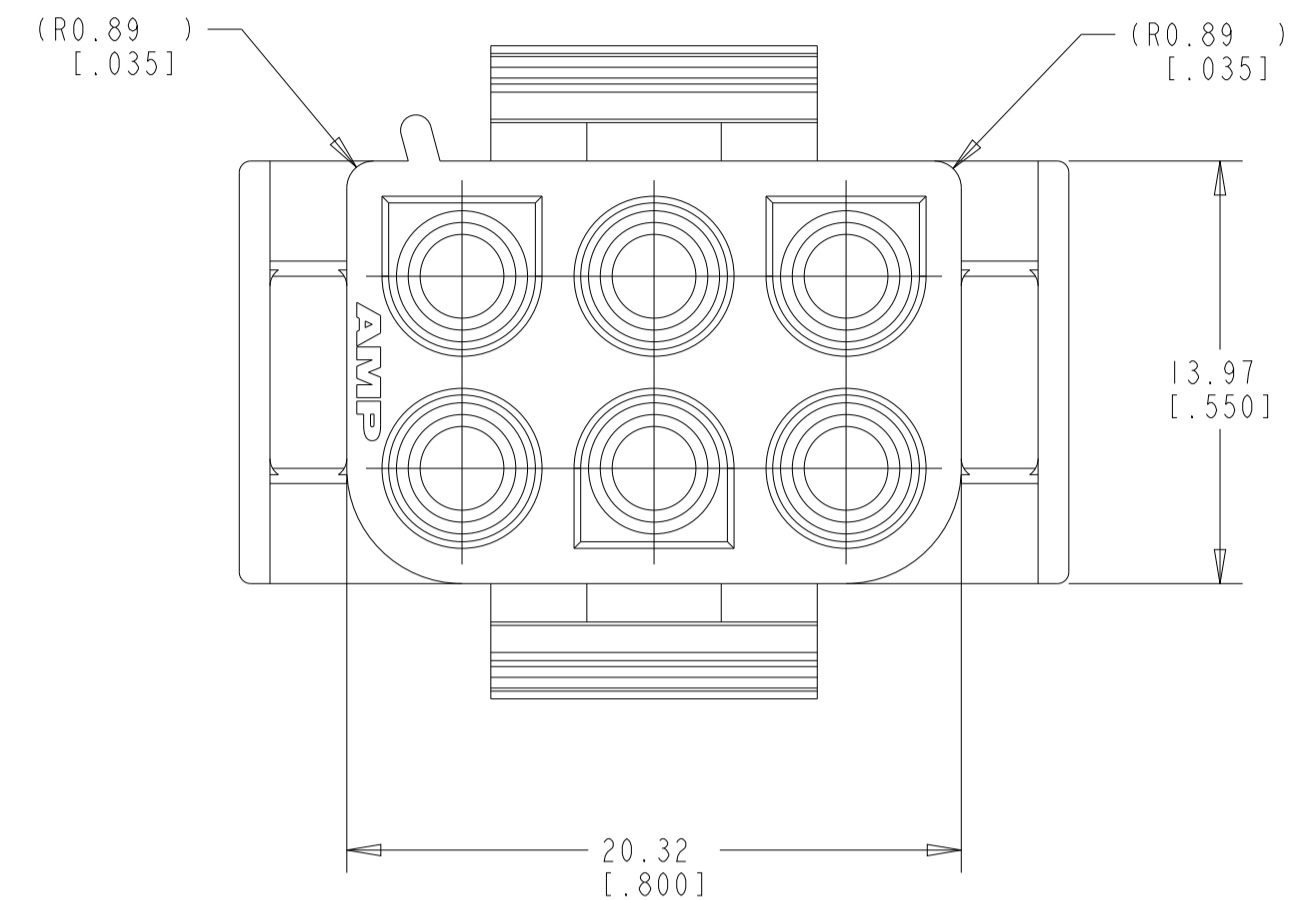
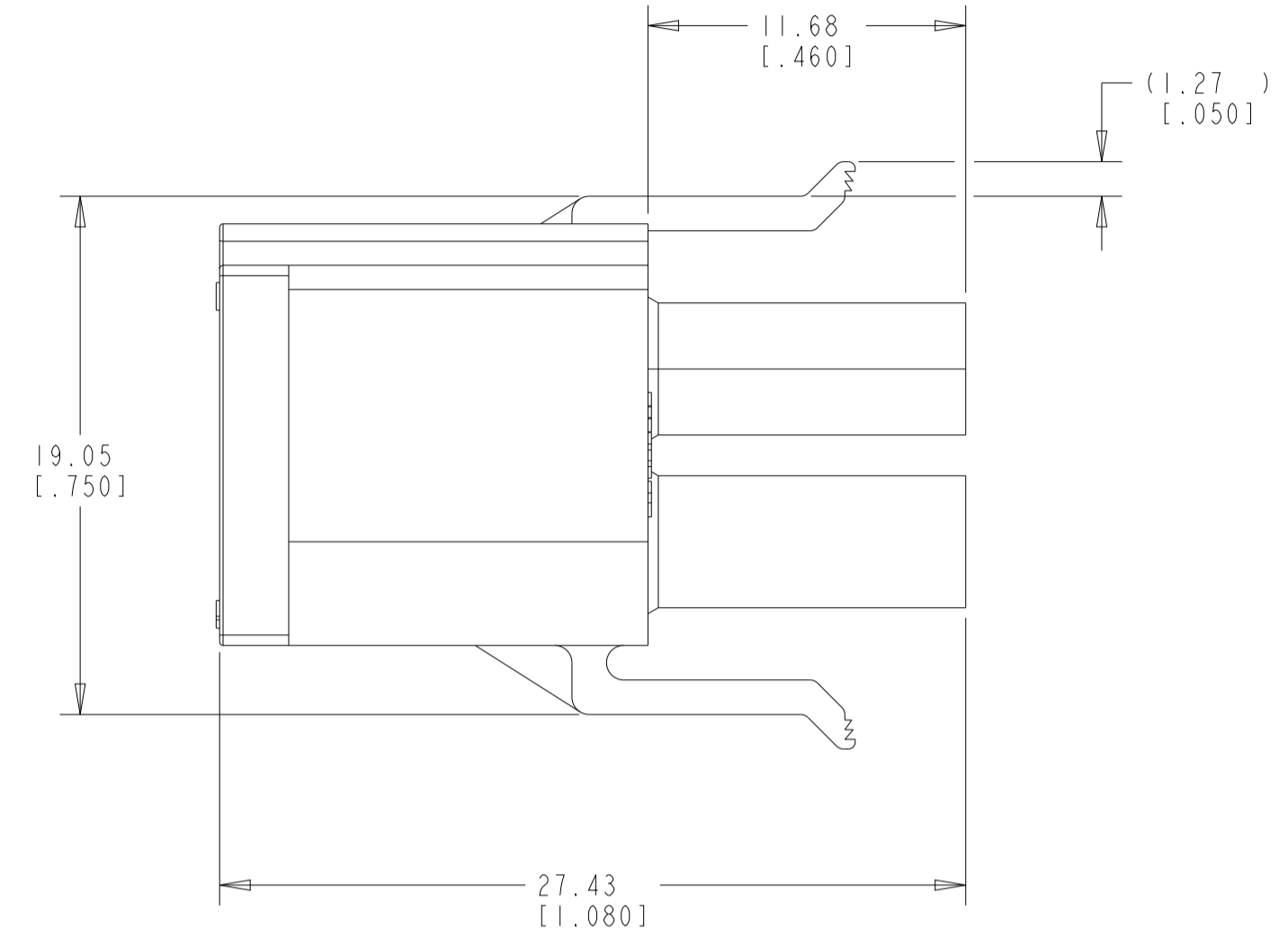
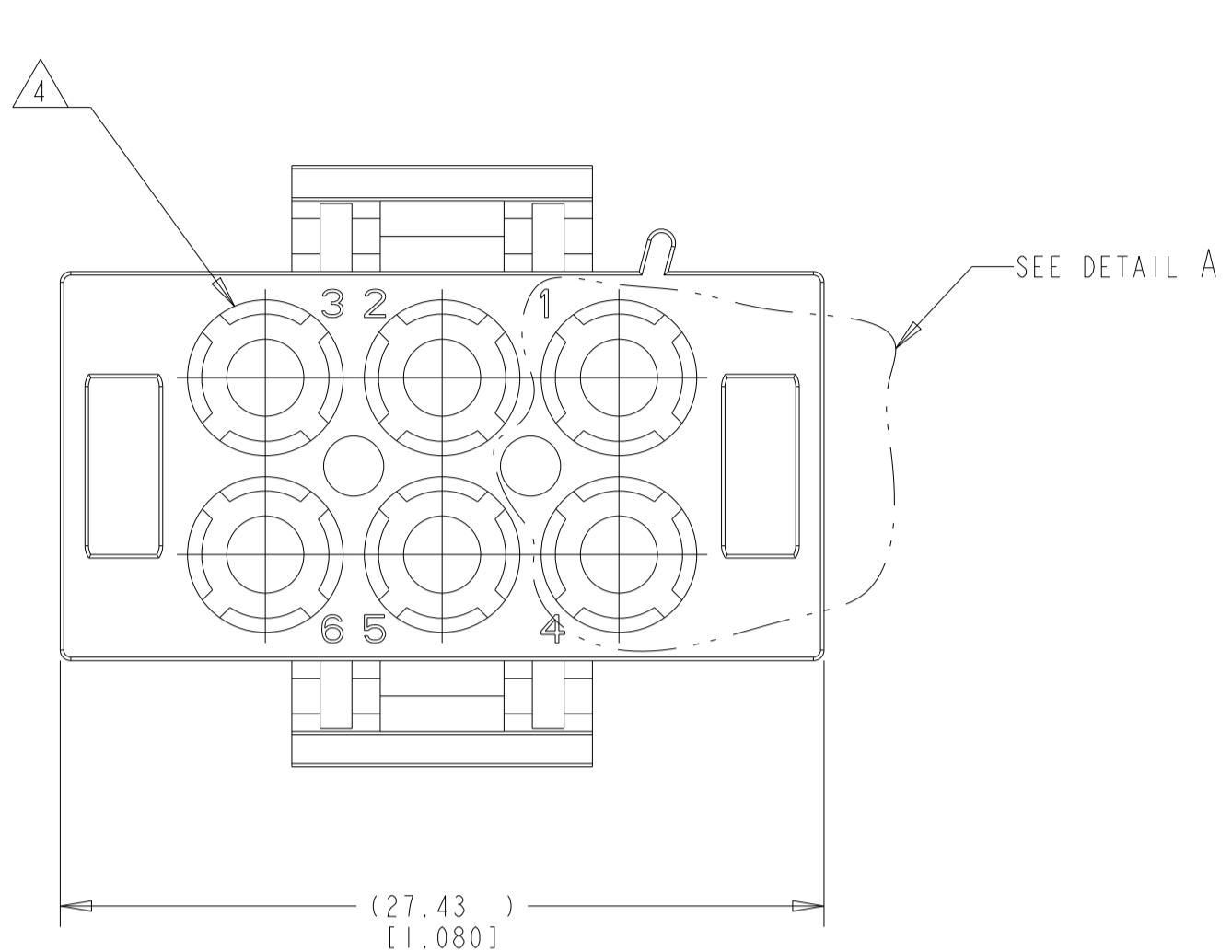
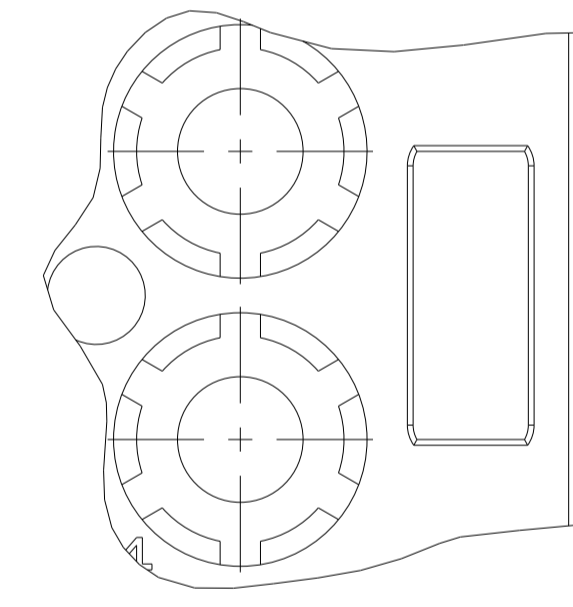
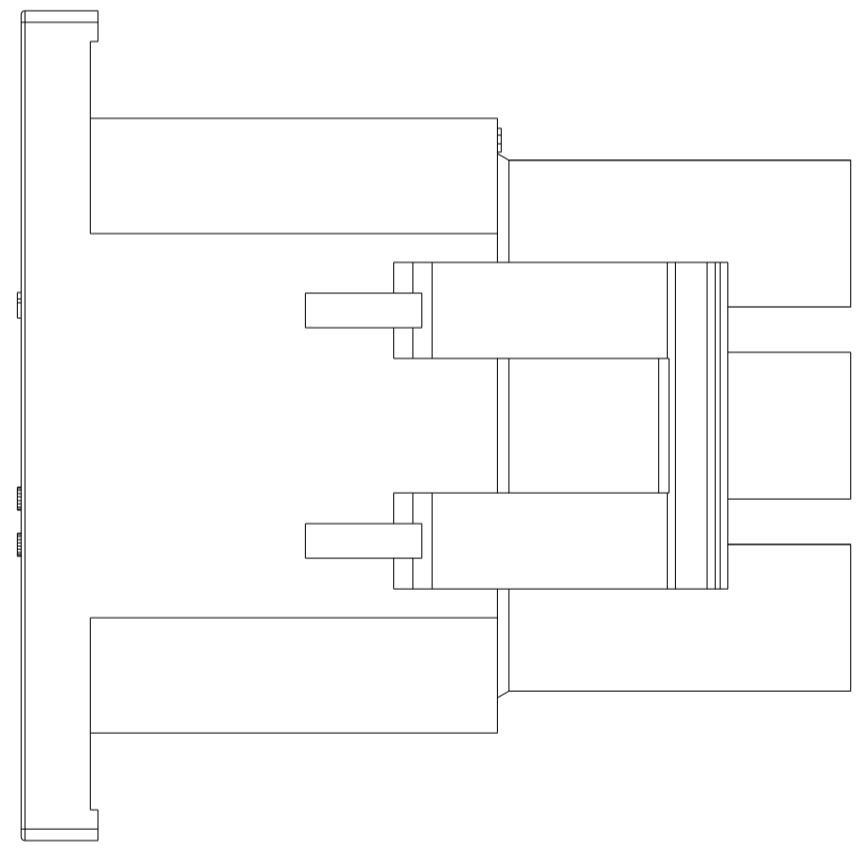


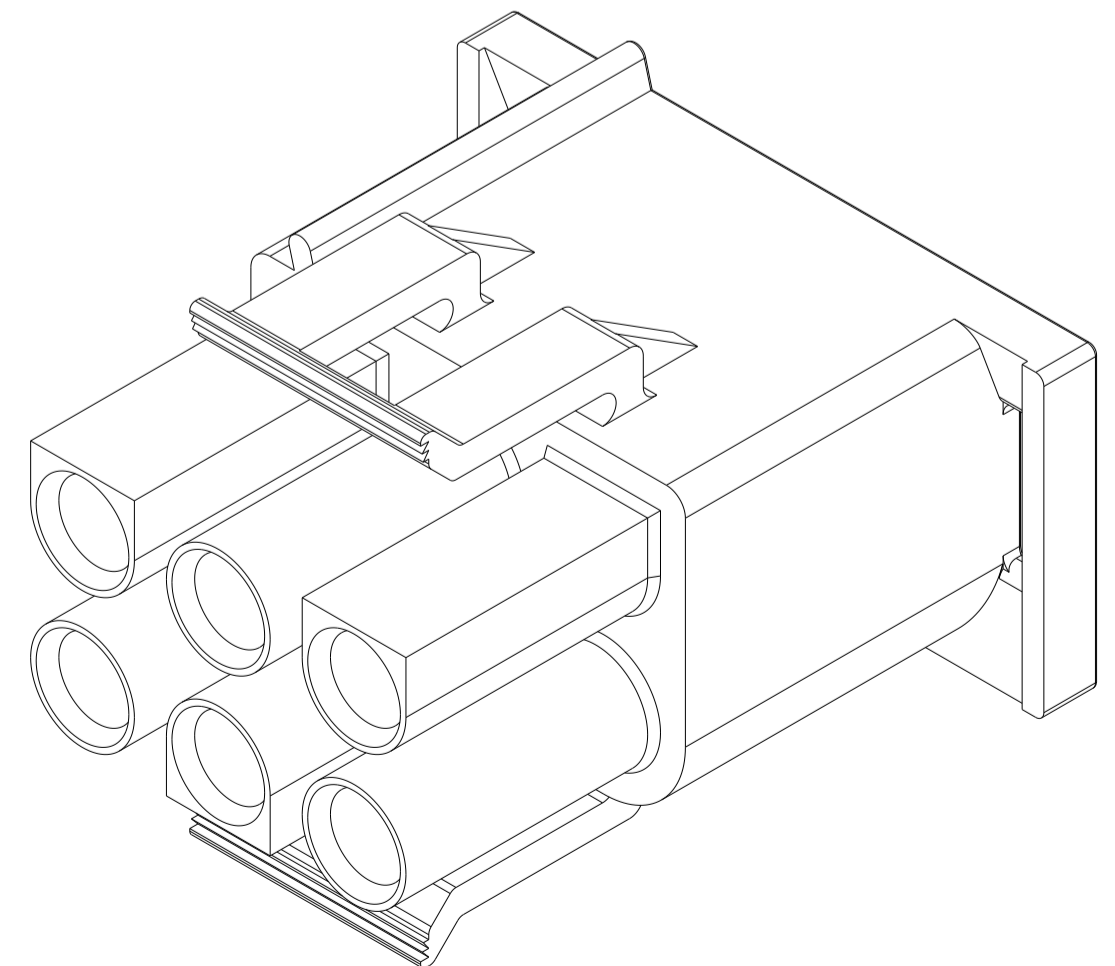
REVISIONS				
P	LTN	DESCRIPTION	DATE	APVD
A1		RELEASED PER ECR-17-015922	07NOV2017	BDA KR
B		REVISED PER ECR-24-218682	09SEP2024	AK BR



- 1 MATES WITH APPROPRIATE UNIVERSAL MATE-N-LOK™ CAP OR HEADER.
  - 2 SMALL NICKS ARE PERMITTED ON THE CIRCUIT TOWERS WHICH COULD INCREASE THE INITIAL HOUSING MATING FORCE BY UP TO 4.4 NEWTONS [1.0 LBS]. NO INDIVIDUAL NICKED TOWER SHALL INCREASE THIS FORCE BY OVER 2.2 NEWTONS [0.5 LBS].
  - 3 DIMENSIONS SHOWN REPRESENT PRODUCT IN DRY, AS MOLDED, CONDITION. ADDITIONAL 2% GROWTH DUE TO SUBSEQUENT MOISTURE ABSORPTION MAY OCCUR AND SHOULD BE ACCOUNTED FOR.
- 4 FOUR RIBS EQUALLY SPACED, NO SPECIFIC ORIENTATION, OR SIX RIBS EQUALLY SPACED, NO SPECIFIC ORIENTATION, OPTIONAL
- 5 MOLDING COMPOUND: 3-703939-8, ( 66/6 NYLON, RED, V0) NO OTHER RESIN MAY BE USED OR SUBSTITUTED.



DETAIL A  
SCALE 6:1  
OPTIONAL CONSTRUCTION



5	2029457-1
MATERIAL	PART NUMBER

THIS DRAWING IS A CONTROLLED DOCUMENT.		DWN: JR_RUTH 13DEC2013	TE Connectivity	
DIMENSIONS: mm [INCHES]		CHK: TOM MICHELLETTI 13DEC2013	NAME: PLUG, 6 CIRCUIT, UNIVERSAL MATE-N-LOK SHORT LATCH	
TOLERANCES UNLESS OTHERWISE SPECIFIED:		APVD: TOM MICHELLETTI 13DEC2013	PRODUCT SPEC: -	
0 PLC	±	APPLICATION SPEC: -	SIZE: CAGE CODE: DRAWING NO: 00779 C=2029457	
1 PLC	±	RESTRICTED TO: -	SCALE: 4:1 SHEET 1 OF 1 REV B	
2 PLC	±0.51 [0.020]	CUSTOMER DRAWING		
3 PLC	±			
4 PLC	±			
ANGLES	±			
FINISH	±0°30'			