

C. Westby 12-6-91
 APPROVED/DATE
 REV 2

SAFETY ORGANIZATION(S)

THIS FILTER HAS BEEN FORMALLY RECOGNIZED, CERTIFIED OR APPROVED BY THE LISTED AGENCY. THEREFORE, ALL TEST/REQUIREMENTS SPECIFIED IN THE LATEST REVISION OF THE FOLLOWING AGENCY STANDARDS HAVE BEEN MET.

UL RECOGNIZED
 CSA CERTIFIED
 VDE APPROVED
 SEMKO APPROVED

OPERATING SPECIFICATIONS

LINE VOLTAGE/CURRENT,
 LINE FREQUENCY,
 MAX. LEAKAGE CURRENT, EACH
 LINE TO GROUND
 OPERATING AMBIENT TEMP. RANGE,
 IN AN AMBIENT, T_0 , HIGHER THAN 40°C, THE MAXIMUM OPERATING CURRENT, I_0 , IS AS FOLLOWS:

RELIABILITY SPECIFICATIONS

STORAGE TEMPERATURE,
 HUMIDITY,
 CURRENT OVERLOAD TEST,
 TEST SPECIFICATIONS,
 INDUCTANCE,
 CAPACITANCE, (MEASURED @ 1 KHZ, 0.25 VAC MAX., 25°C ±1°C)
 LINE TO GROUND,
 LINE TO LINE,
 DISCHARGE RESISTOR,
 LINE/GROUND AND LINE/LINE
 INSULATION RESISTANCE
 (H/O DISCHARGE RESISTOR)

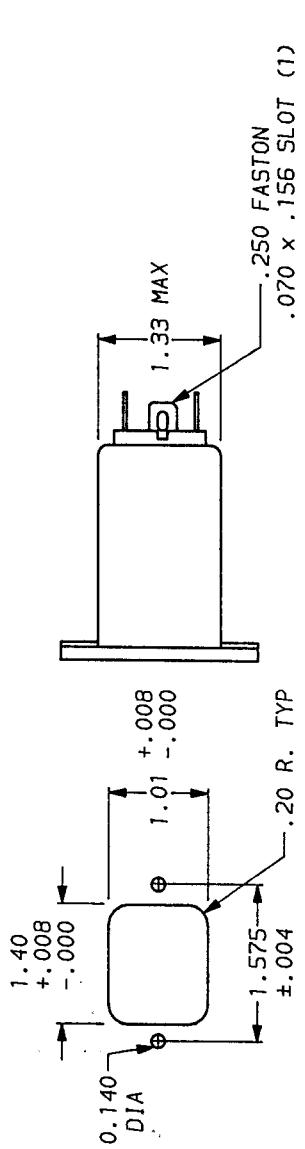
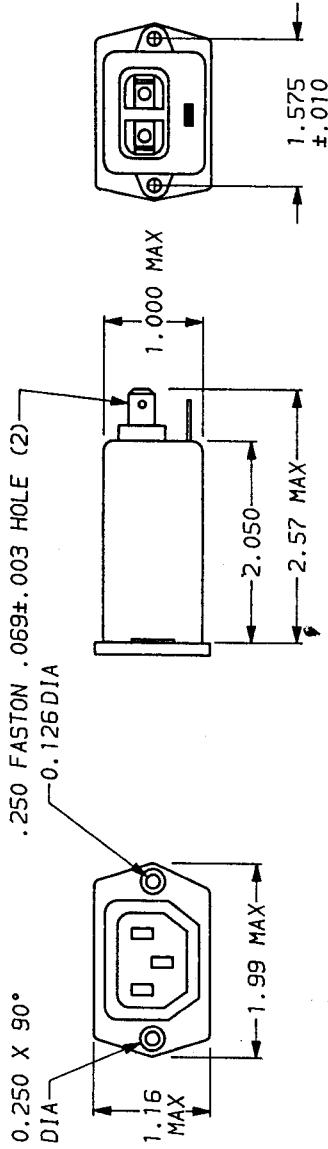
RECOMMENDED RECEIVING INSPECTION HIPOIT,
 LINES TO GROUND,
 LINE TO LINE,
 FILTER APPROVAL,
 THE BEST WAY TO SELECT AND QUALIFY A FILTER IS FOR YOUR ENGINEERING TO TEST THE UNIT IN YOUR EQUIPMENT.

TOLERANCE EXCEPT AS NOTED
 DECIMAL: .XXX .XX .X ANGLES
 ENGLISH: ±.020 .X
 METRIC: ±

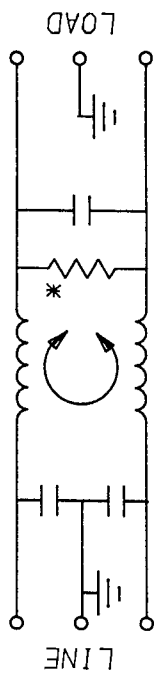
MATERIAL:
 AS SUPPLIED
 FINISH:
 AS SUPPLIED

SCALE NTS 11-5-90
 DATE
 ORIGINATOR CFW
 REV. 1EBF1.02

DRG. NO.
 1EBF1.02



THIS FILTER LINE AND LOAD ARE REVERSED; THE SOCKET IS LOAD.



FREQUENCY	50Ω - 50Ω (MINIMUM) INSERTION LOSS									
Hz	.01	.05	.1	.15	.5	1	3	5	10	30
COMMON	12	23	29	32	41	47	47	47	47	40
DIFF. dB	—	—	—	1	3	14	23	41	47	50

This document is proprietary to CORCOM INC. and is not to be reproduced nor used for manufacturing purposes except on CORCOM's order or prior written consent.

*RESISTOR ADDED TO PRODUCT BUILT AFTER 3-30-92 (9212)



ACCESSORY OUTLET FILTER