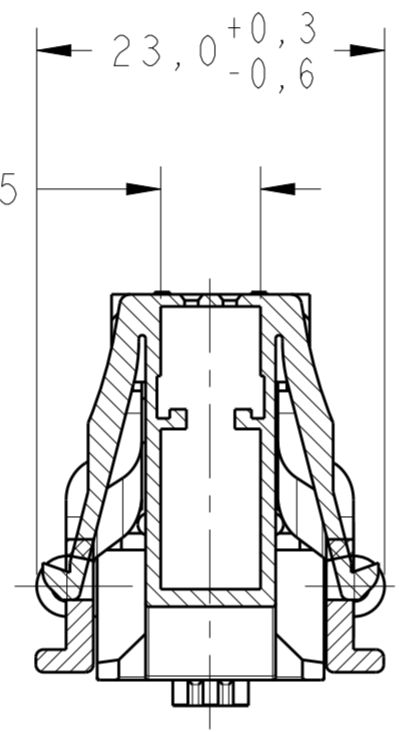
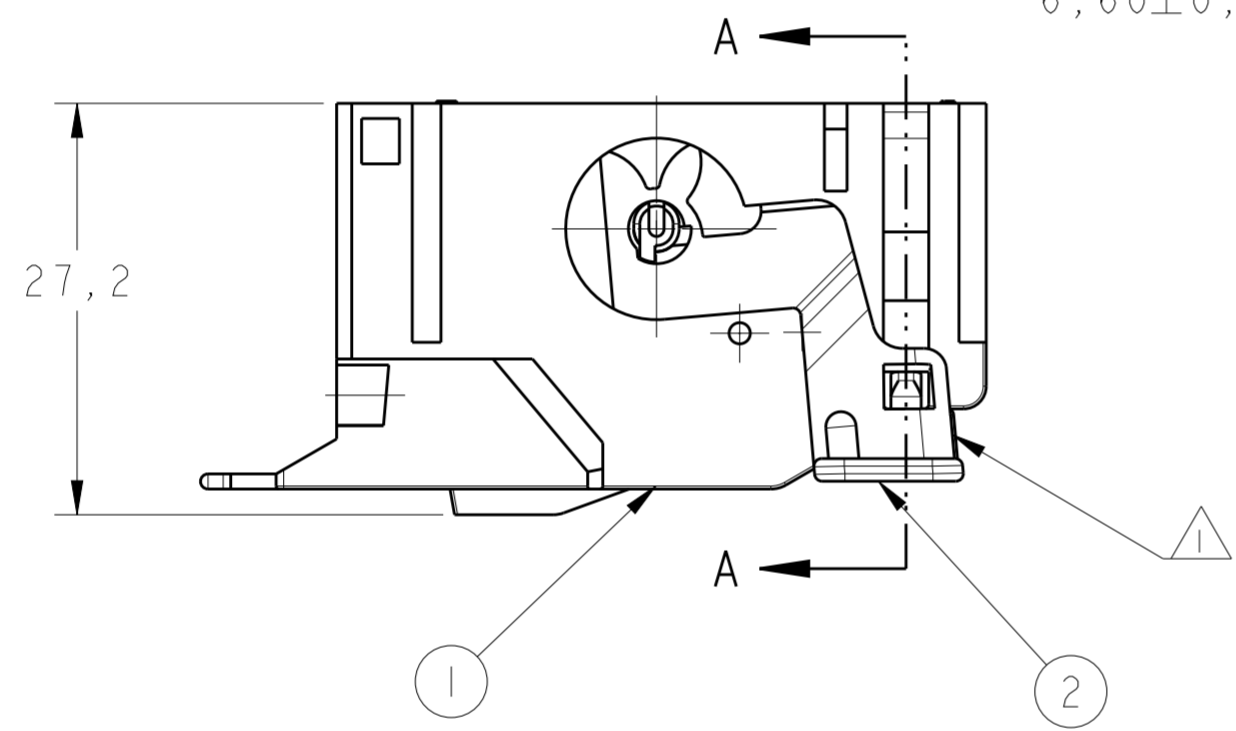
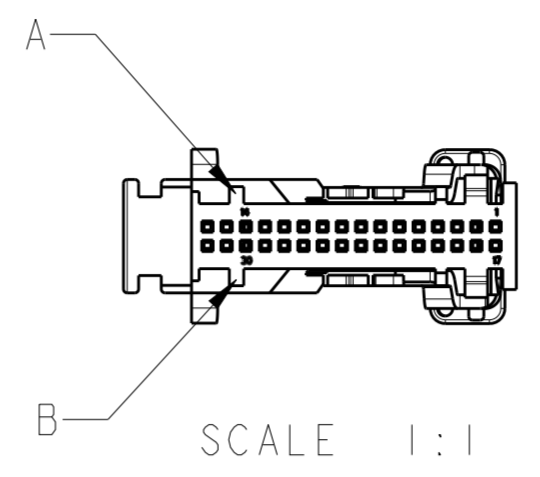
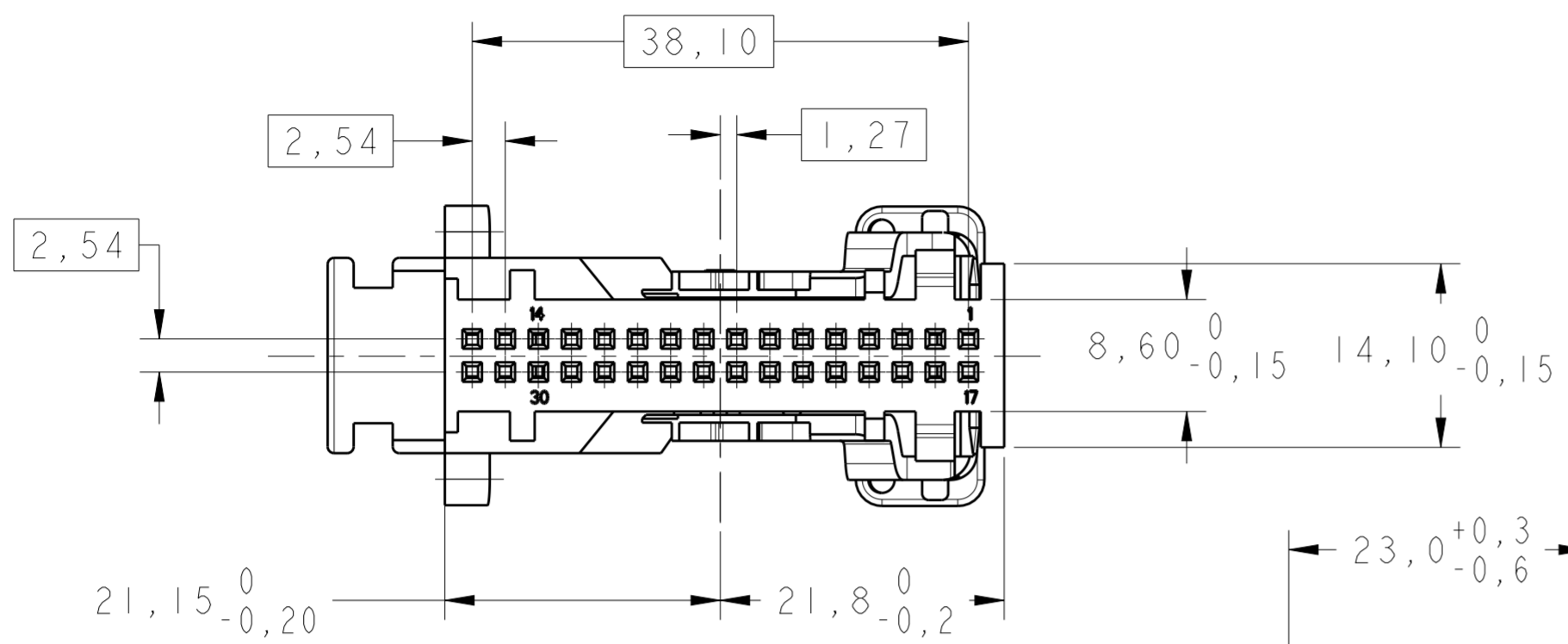
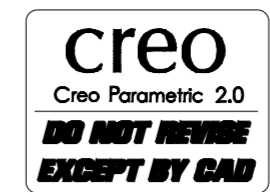


REVISIONS					
P	LTR	DESCRIPTION	DATE	DWN	APVD
A		RELEASED BY ECO-09-027249	17DEC2009	RKTL	CM
B		REVISED BY ECO-14-010912	17JUL2014	RKL	NMS

ALL CODINGS SHOWN

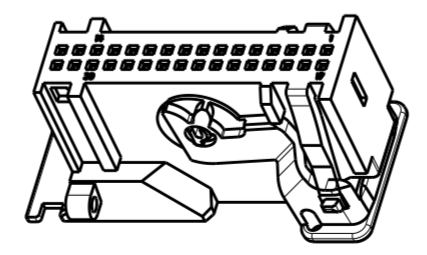
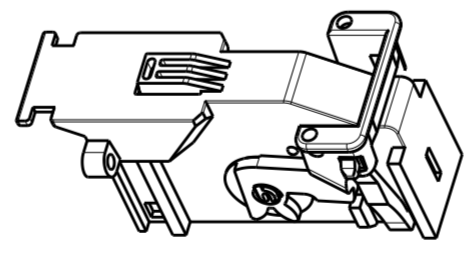
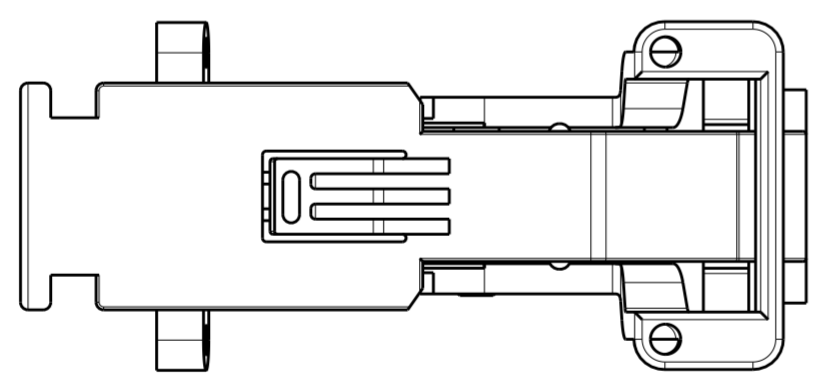


SECTION A-A

GRAVAÇÕES MARKINGS
LOGOTIPO TE TE LOGO
CÓDIGO PAÍS PRODUTOR MANUFACTURER COUNTRY CODE
NOMENCLATURA MATERIAL MATERIAL NOMENCLATURE
NÚMERO COMPONENTE TE TE COMPONENT NUMBER
NÚMERO CAVIDADE CAVITY NUMBER
IDENTIFICAÇÃO CIRCUITO CIRCUIT IDENTIFICATION
DATADOR DATE CODE

- 1 - LEVER MONTADO NA POSIÇÃO DE PRÉ-TRAVA
LEVER DEVE ESTAR TRAVADO POR TRAZ DO DIMPLE
- 2 - EMBALAGEM: PEÇAS SOLTA
- 3 - USADO COM 968265
CONTRA PEÇA APROPRIADA 967598
- 4 - ATRIBUIÇÃO DAS CAVIDADES: MÁXIMO DE 25% DAS CAVIDADES COM TERMINAIS APLICADOS COM CABOS DE 0,5mm², UNIFORMEMENTE DISTRIBUIDOS SOBRE O HOUSING. CABOS DE MAIORES SEÇÕES DEVRÁ TER PRÉVIA APROVAÇÃO DA ENGENHARIA DE PRODUTO.

- 1 - LEVER ASSEMBLED IN PRE-LOCK POSITION
LEVER MUST BE LOCKED BEHIND THE DIMPLE
- 2 - PACKAGING: LOOSE PIECE
- 3 - USED WITH 968265
SUITABLE MAITING PART 967598
- 4 - ASSIGNMENT OF CAVITIES: MAXIMUM 25% OF CONTACT CAVITIES ASSIGNED WITH CONTACTS WITH A CABLES CROSS SECTION OF 0,5mm², UNIFORMLY DISTRIBUTED OVER THE HOUSING. LARGER CROSS SECTION MUST HAVE PRODUCT ENGINEERING PREVIOUS APPROVE.



PERSPECTIVE VIEW
SCALE 1:1

	1	2	LEVER - HSG., 2x16POSN. MQS	PC	-	PRETO - BLACK
	1	1	COVER - HSG., 2x16POSN. MQS	PBT- 20%GF	B	AZUL - BLUE
	-	1	COVER - HSG., 2x16POSN. MQS	PBT- 20%GF	A	CINZA - GREY
REQ. PER ASSY						
	-	2	ITEM	DESCRIPTION	MATERIAL	CODE
			1989719			FINISH

THIS DRAWING IS A CONTROLLED DOCUMENT.		DWN P.L.FARIA 26FEB2009	TE Connectivity			
DIMENSIONS: mm		CHK -				
TOLERANCES UNLESS OTHERWISE SPECIFIED:		APVD C.MARTINS 20MAR2009	NAME COVER ASSY MQS - HSG 2x16POSN			
0 PLC ±		PRODUCT SPEC	-			
1 PLC ±0,3		APPLICATION SPEC	NA			
2 PLC ±		WEIGHT	-			
3 PLC ±		Customer Drawing	SIZE A2	CAGE CODE 00779	DRAWING NO C-1989719	RESTRICTED TO
4 PLC ±			SCALE 2:1	SHEET 1	OF 1	REV B
ANGLES ±1						
FINISH						
MATERIAL SEETABLE		SEE TABLE				