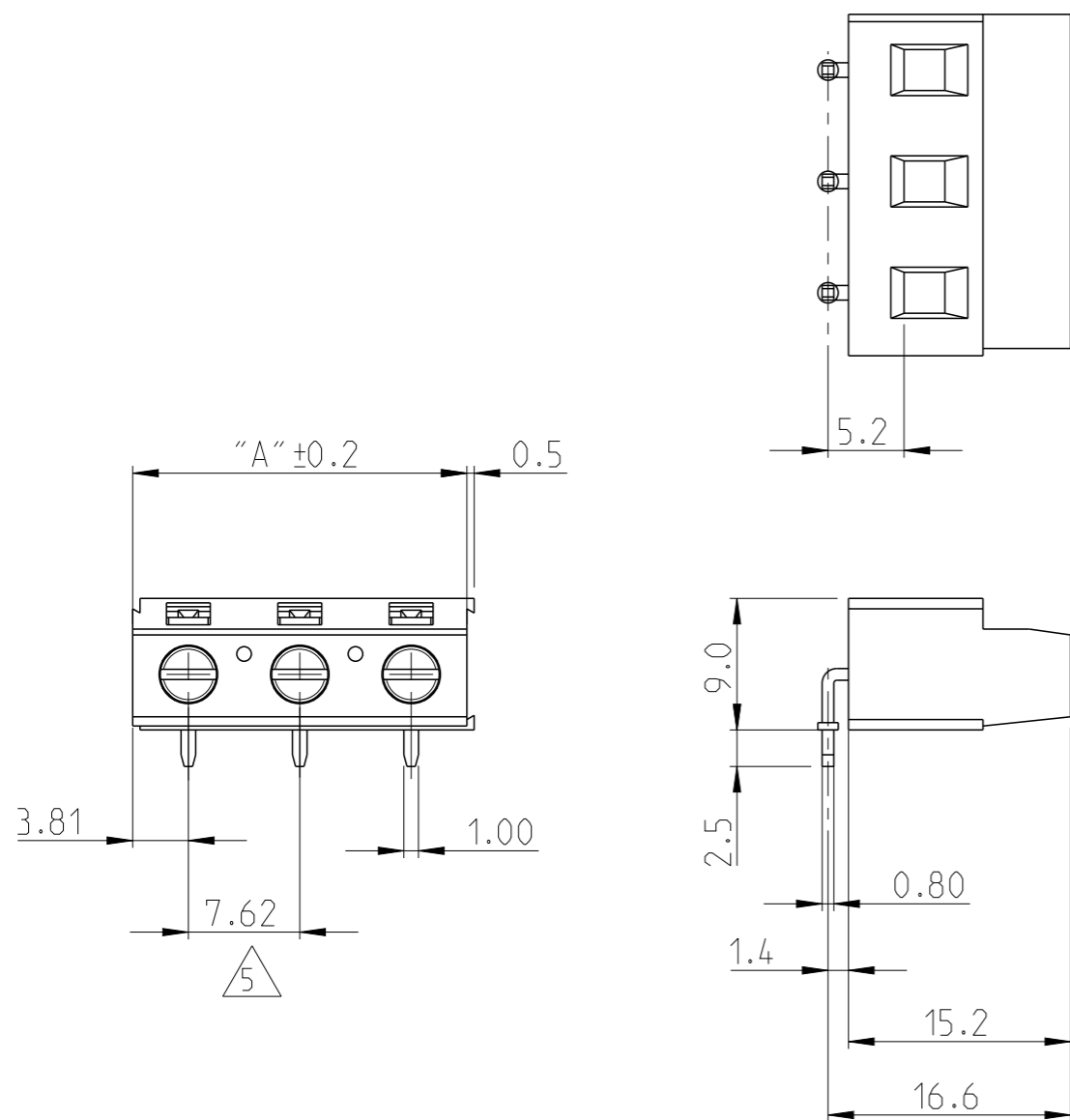


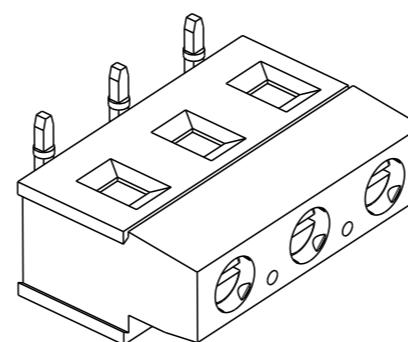
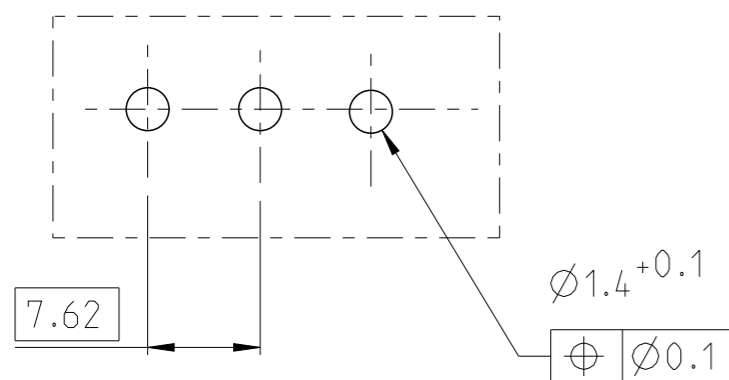
P	LTR	DESCRIPTION	DATE	DWN	APVD
	A	NEW RELEASE	01JAN2015	PS	JK

NOTES:


- MATERIALS & FINISH**
 HOUSING : PA6.6, UL94 V0, COLOR - GREEN
 SCREW M3 : BRASS, NICKEL PLATED
 CLAMP : BRASS, NICKEL PLATED
 CONTACT : BRASS, TIN PLATED
 - MECHANICAL**
 RECOMMENDED/HIGHEST TIGHTENING TORQUE 0.5/0.6 Nm
 PCB THICKNESS: MAX. 1.6 mm
 STRIPPING LENGTH 5.5 TO 6.5 mm
 - ELECTRICAL**
 WIRE RANGE: 30 - 12 AWG
 MAX. VOLTAGE : 300 V
 MAX CURRENT : 17.5 A (FACTORY WIRING); 15A (FIELD WIRING)
 CONTACT RESISTANCE <15 mΩ
 INSULATION RESISTANCE : > 1000 MΩ (500V DC)
 - OPERATING TEMPERATURE RANGE : -40 °C TO +110 °C**
- ⚠ TOLERANCE NOT CUMULATIVE.



RECOMMENDED PCB HOLE LAYOUT



22.86	03	1986901-3
15.24	02	1986901-2
DIM 'A'	NO. OF POS.	PART NO

THIS DRAWING IS A CONTROLLED DOCUMENT.		DWN	17DEC2014	 TE Connectivity												
DIMENSIONS: mm		CHK	30DEC2014													
TOLERANCES UNLESS OTHERWISE SPECIFIED:		APVD	30DEC2014													
<table border="1"> <tr><td>0 PLC</td><td>±</td></tr> <tr><td>1 PLC</td><td>±0.2</td></tr> <tr><td>2 PLC</td><td>±0.15</td></tr> <tr><td>3 PLC</td><td>±</td></tr> <tr><td>4 PLC</td><td>±</td></tr> <tr><td>ANGLES</td><td>±2°</td></tr> </table>		0 PLC	±			1 PLC	±0.2	2 PLC	±0.15	3 PLC	±	4 PLC	±	ANGLES	±2°	NAME
0 PLC	±															
1 PLC	±0.2															
2 PLC	±0.15															
3 PLC	±															
4 PLC	±															
ANGLES	±2°															
MATERIAL SEE NOTES		PRODUCT SPEC	-	SIZE	A3											
FINISH		APPLICATION SPEC	-	CAGE CODE	00779											
-		WEIGHT	-	DRAWING NO	1986901											
-		Customer Drawing		RESTRICTED TO	-											
		SCALE	2:1	SHEET	1 OF 1											
				REV	A											