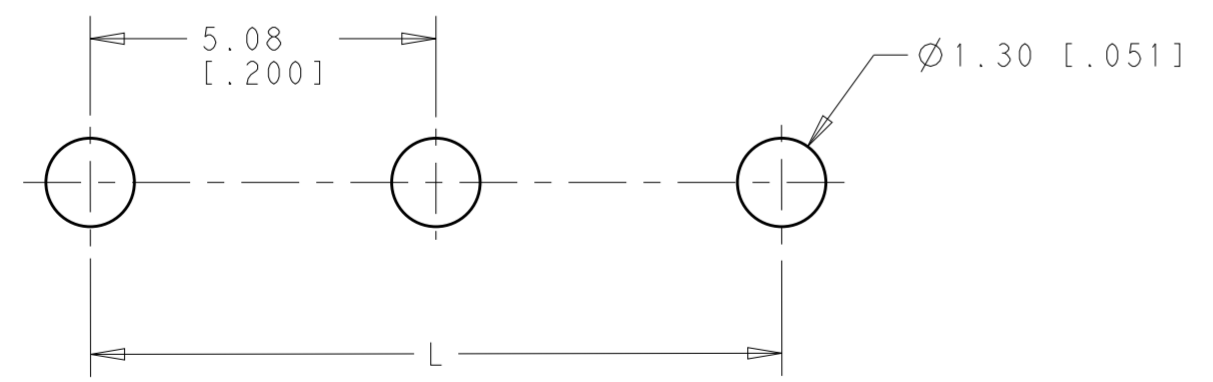
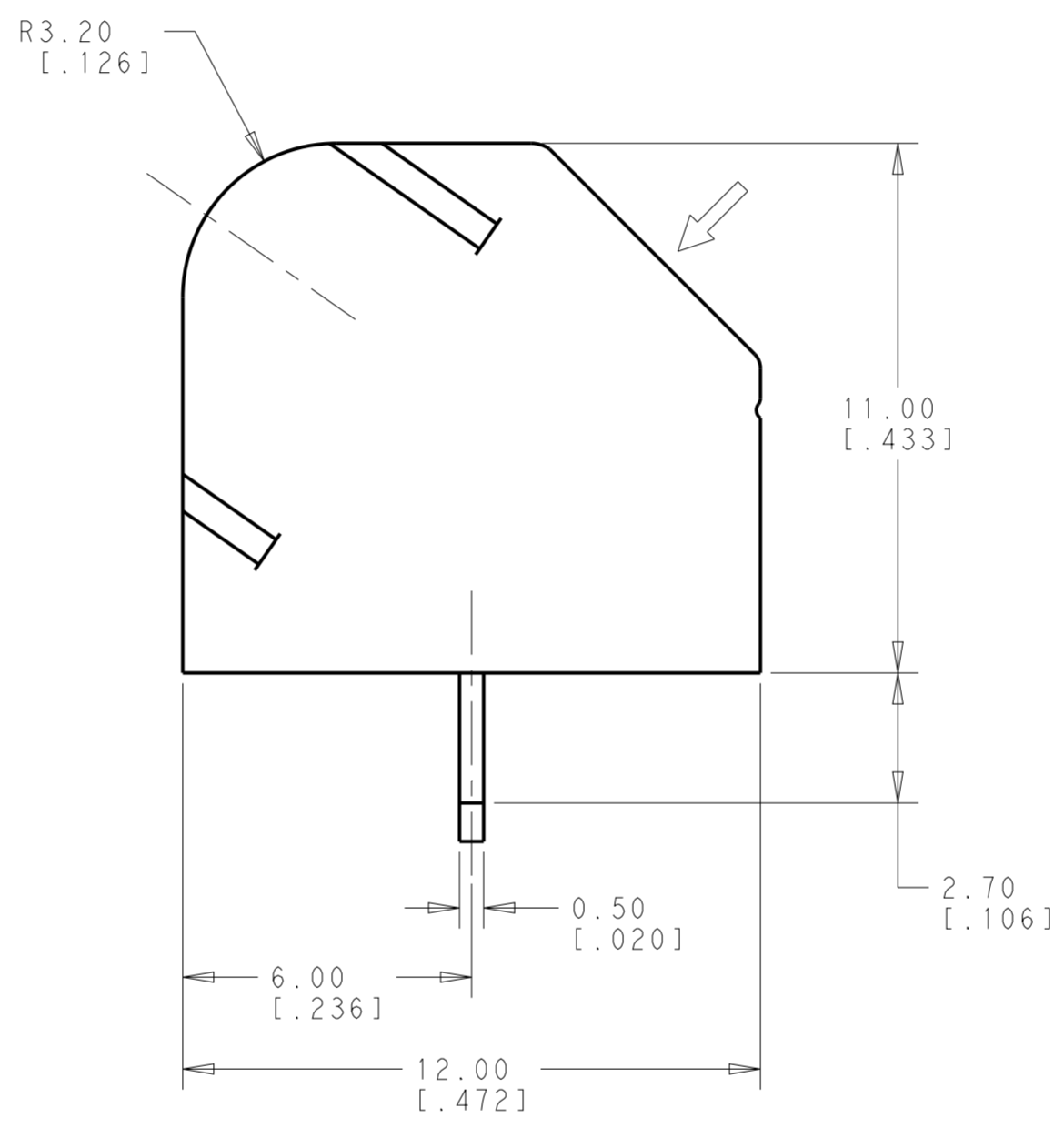
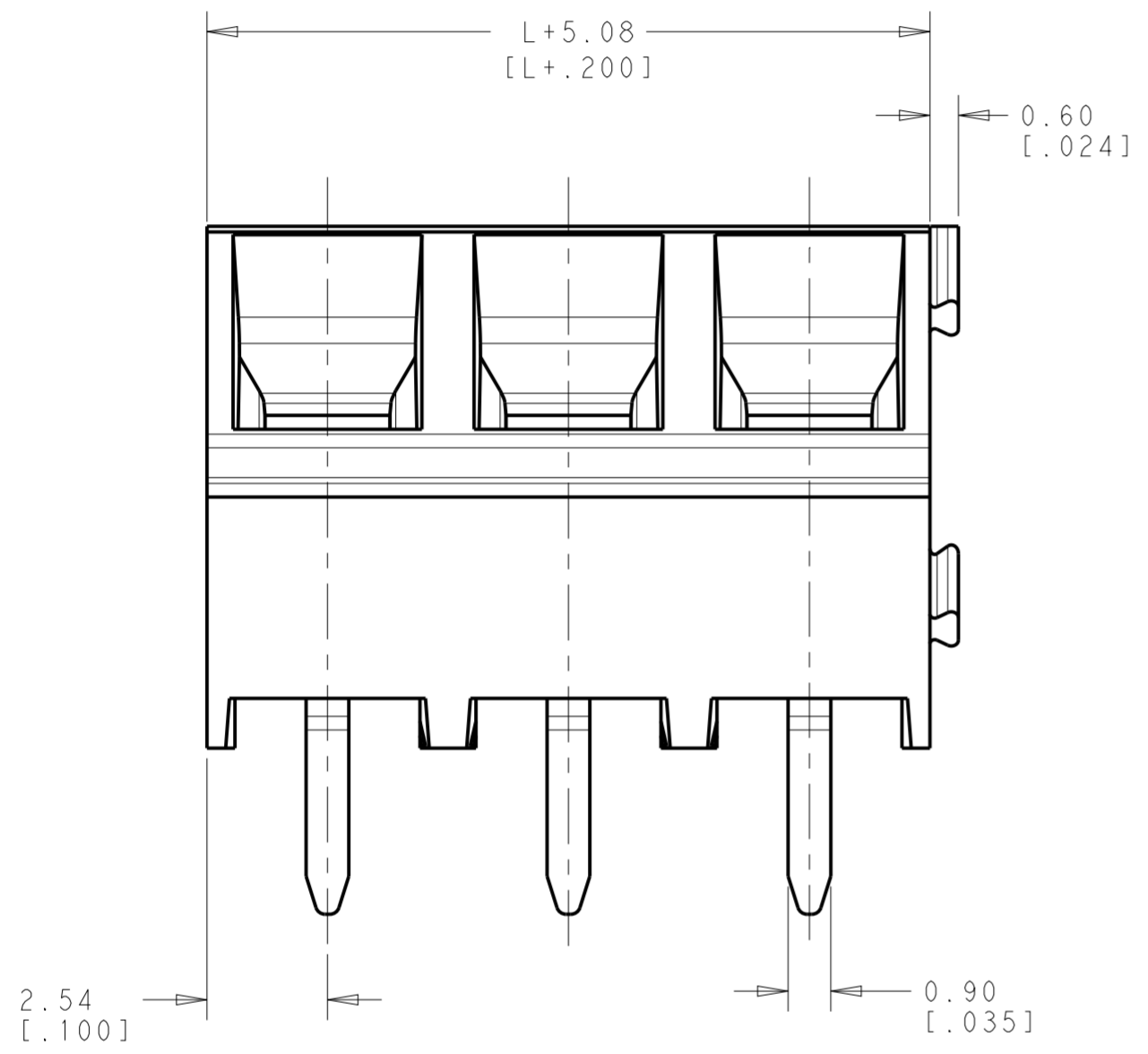


THIS DRAWING IS UNPUBLISHED. RELEASED FOR PUBLICATION 20
 © COPYRIGHT 20 BY - ALL RIGHTS RESERVED.

REVISIONS				
P	LTR	DESCRIPTION	DATE	APVD
2		REVISED PER ECO-14-016225	30OCT2014	NK MM

- 1 MATERIAL AND FINISH
 HOUSING: PA 6-6, U: 94V-0 RATED, COLOR: GREEN.
 CLAMP: BRASS, NICKEL PLATED.
 TERMINAL: BRASS, TIN PLATED.
 CLAMPING SCREW: M3, BRASS, NICKEL PLATED.
- 2 SUITABLE FOR 1.6-2.4mm PC BOARD THICKNESS.
- 3 CURRENT RATING: 13.5A (FACTORY WIRING) 10A (FIELD WIRING)
 VOLTAGE RATING: 300V
- 4 WIRE SIZE RANGE: 16-30 AWG
- 5 RECOGNIZED UNDER THE COMPONENT PROGRAM OF
 UNDERWRITERS LABORATORIES INC. FILE NO. E60677.
- 6 INQ CERTIFICATE WITH SURVEILLANCE IN COMFORMITY
 WITH IEC 998-1/998-1-1.
- 7 NOT CUMULATIVE TOLERANCE.



← WIRE ENTRY
 L= PITCH X (POLES=1)

PRELIMINARY-NOT RELEASED FOR PRODUCTION

35.56	8	1986806-8
30.48	7	1986806-7
25.40	6	1986806-6
20.32	5	1986806-5
15.24	4	1986806-4
10.16	3	1986806-3
5.08	2	1986806-2
L (mm)	NO. OF POSITION	PART NUMBER

THIS DRAWING IS A CONTROLLED DOCUMENT.		DWN NAGALAKSHMI, K	18FEB2014	TE Connectivity NAME TERMINAL BLOCK, PCB MOUNT, SIDE ENTRY, 55 DEG, 5.08mm PITCH
DIMENSIONS: mm		CHK MERCURIO, MAURIZIO	18FEB2014	
TOLERANCES UNLESS OTHERWISE SPECIFIED:		APVD MERCURIO, MAURIZIO	18FEB2014	
0 PLC ± 1 PLC ±0.2 2 PLC ±0.15 3 PLC ±0.000 4 PLC ±0.0000 ANGLES ±2° FINISH		PRODUCT SPEC -	APPLICATION SPEC -	
MATERIAL		WEIGHT	-	SIZE A2 CAGE CODE - DRAWING NO. C-1986806 RESTRICTED TO - SCALE 1:1 SHEET 1 OF 1 REV 2
Customer Drawing				