

4

3

2

1

THIS DRAWING IS UNPUBLISHED.

RELEASED FOR PUBLICATION

ALL RIGHTS RESERVED.

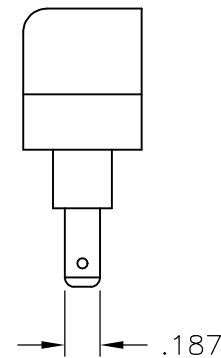
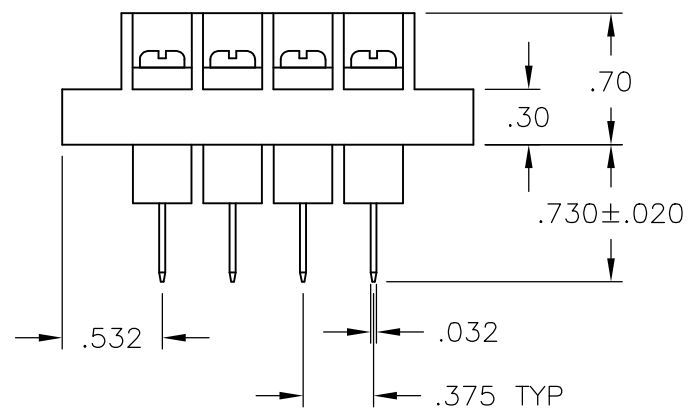
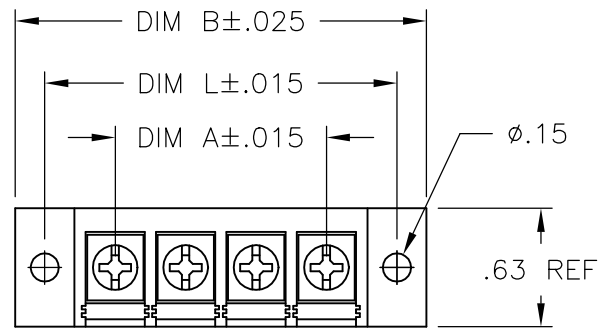
© COPYRIGHT - By -

REVISIONS

P	LTR	DESCRIPTION	DATE	DWN	APVD
	B1	IN PN TABLE DIM DESIGNATED LETTER CORRECTED	02AUG2018	RK	PS

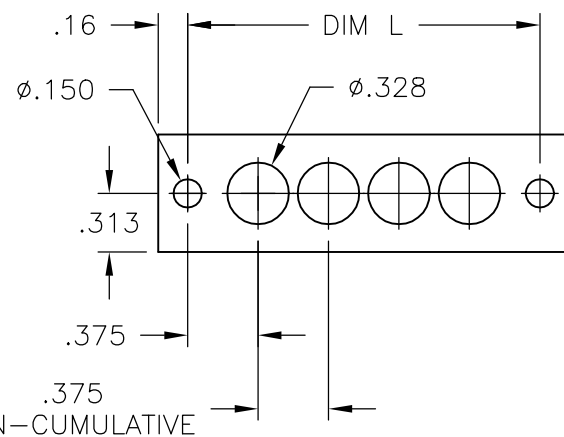
PHYSICAL PROPERTIES:  
 HOUSING: THERMOPLASTIC, UL94V-0, BLACK.  
 TERMINALS: BRIGHT TIN OVER COPPER ALLOY.  
 SCREWS: 6-32 STEEL, ZINC PLATING W/ CLEAR CHROMATE.  
 PITCH: .375"  
 MAX OPERATING TEMP.: +105°C  
 RECOMMENDED TIGHTENING TORQUE: 7 IN-LBS.

ELECTRICAL PROPERTIES:  
 CURRENT RATING: 20A  
 OPERATING VOLTAGE: 300V  
 WIRE RANGE: 12-22 AWG



7.439	7.125	6.375	18	BC6-F308-18	1-1986800-8
7.064	6.750	6.000	17	BC6-F308-17	1-1986800-7
6.689	6.375	5.625	16	BC6-F308-16	1-1986800-6
6.314	6.000	5.250	15	BC6-F308-15	1-1986800-5
5.939	5.625	4.875	14	BC6-F308-14	1-1986800-4
5.564	5.250	4.500	13	BC6-F308-13	1-1986800-3
5.189	4.875	4.125	12	BC6-F308-12	1-1986800-2
4.814	4.500	3.750	11	BC6-F308-11	1-1986800-1
4.439	4.125	3.375	10	BC6-F308-10	1-1986800-0
4.064	3.750	3.000	9	BC6-F308-09	1986800-9
3.689	3.375	2.625	8	BC6-F308-08	1986800-8
3.314	3.000	2.250	7	BC6-F308-07	1986800-7
2.939	2.625	1.875	6	BC6-F308-06	1986800-6
2.564	2.250	1.500	5	BC6-F308-05	1986800-5
2.189	1.875	1.125	4	BC6-F308-04	1986800-4
1.814	1.500	.750	3	BC6-F308-03	1986800-3
1.439	1.125	.375	2	BC6-F308-02	1986800-2

DIM B	DIM L	DIM A	NO OF POS	CATALOG NUMBER	TE PART NO.
-------	-------	-------	-----------	----------------	-------------



MOUNTING PANEL LAYOUT

THIS DRAWING IS A CONTROLLED DOCUMENT.		DWN 15OCT2013 KIRAN HOLAL	TE Connectivity				
DIMENSIONS: INCHES		CHK 15OCT2013 MERCURIO MAURIZIO					
TOLERANCES UNLESS OTHERWISE SPECIFIED:		APVD 15OCT2013 MERCURIO MAURIZIO	NAME				
0 PLC ± - 1 PLC ± - 2 PLC ± .01 3 PLC ± .005 4 PLC ± - ANGLES ± -		PRODUCT SPEC	BC6-F308-XX ASSEMBLY				
MATERIAL		FINISH	APPLICATION SPEC	SIZE	CAGE CODE	DRAWING NO	RESTRICTED TO
-		-	-	A3	00779	1986800	-
CUSTOMER DRAWING			SCALE	SHEET	REV		
			1:1	1 of 1	B1		