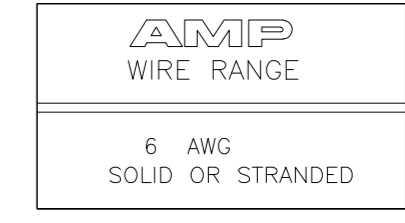
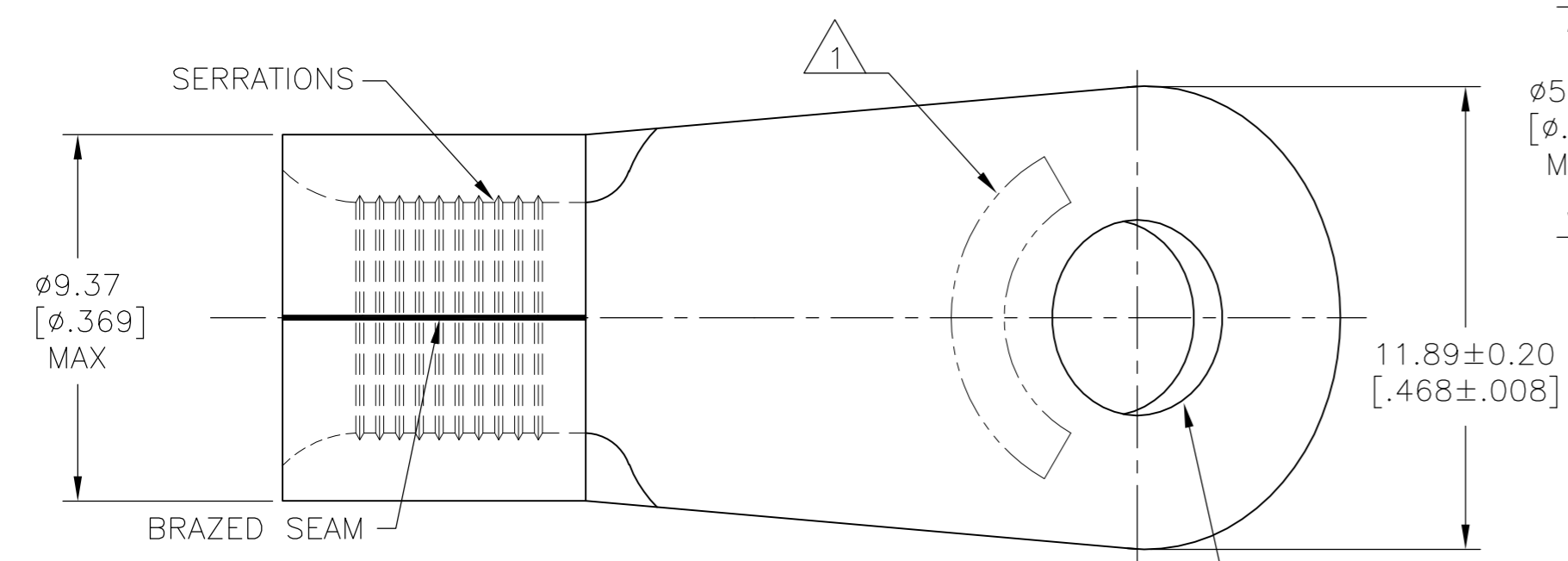
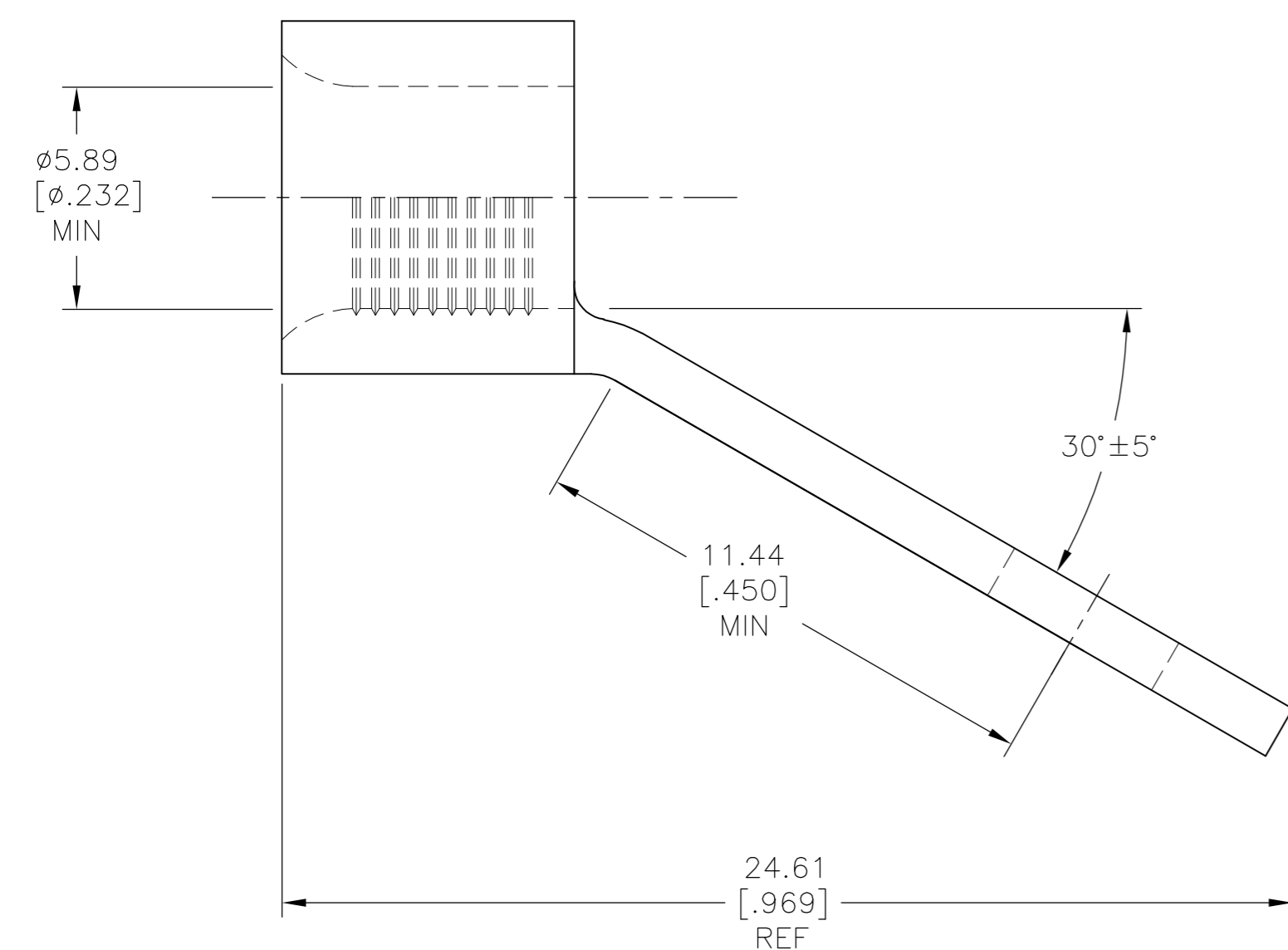


THIS DRAWING IS UNPUBLISHED. RELEASED FOR PUBLICATION
 © COPYRIGHT - By - ALL RIGHTS RESERVED.

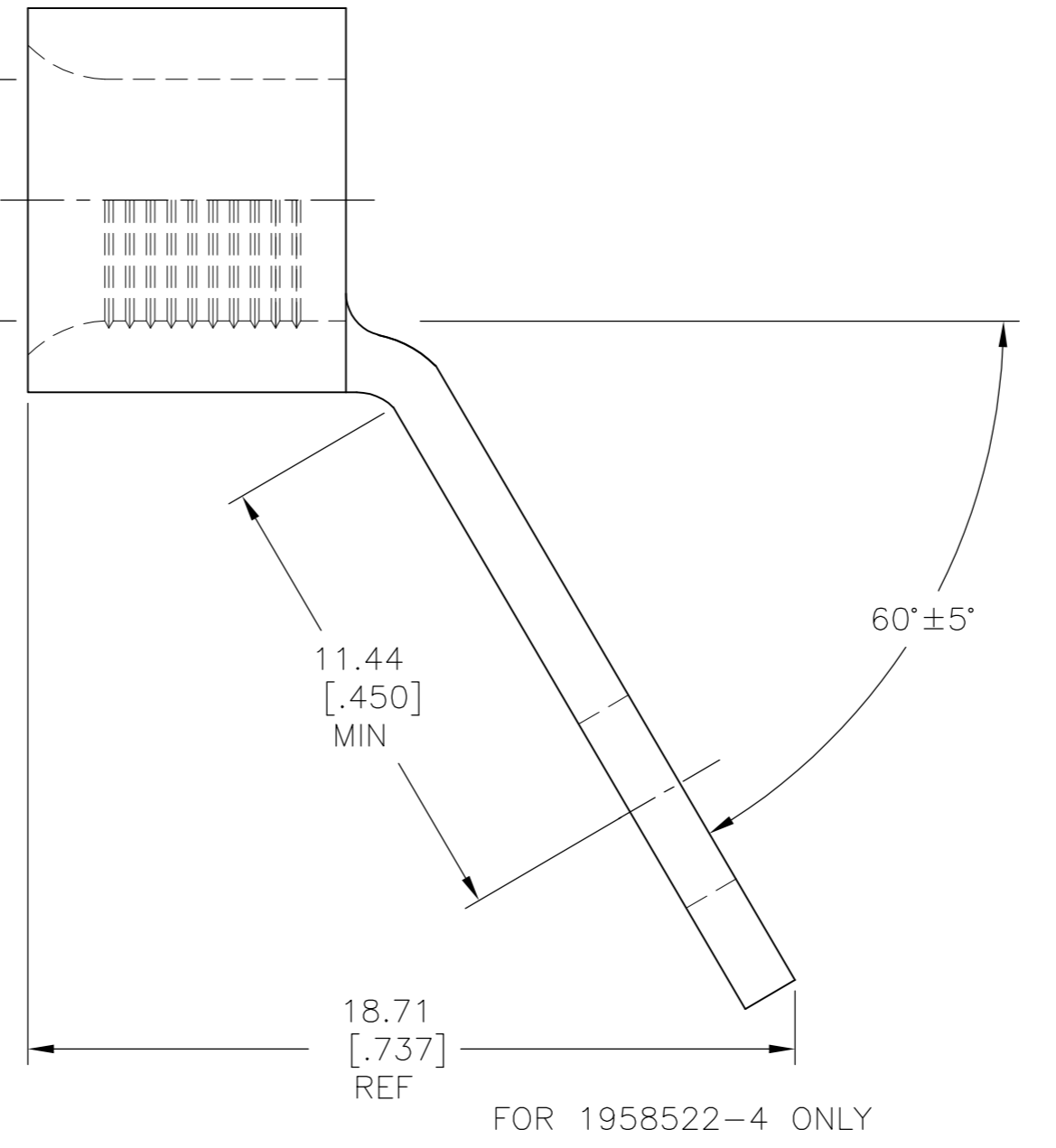
REVISIONS					
P	LTR	DESCRIPTION	DATE	DWN	APVD
2		REVISED PER ECO-16-014628	14OCT2016	RS	DR



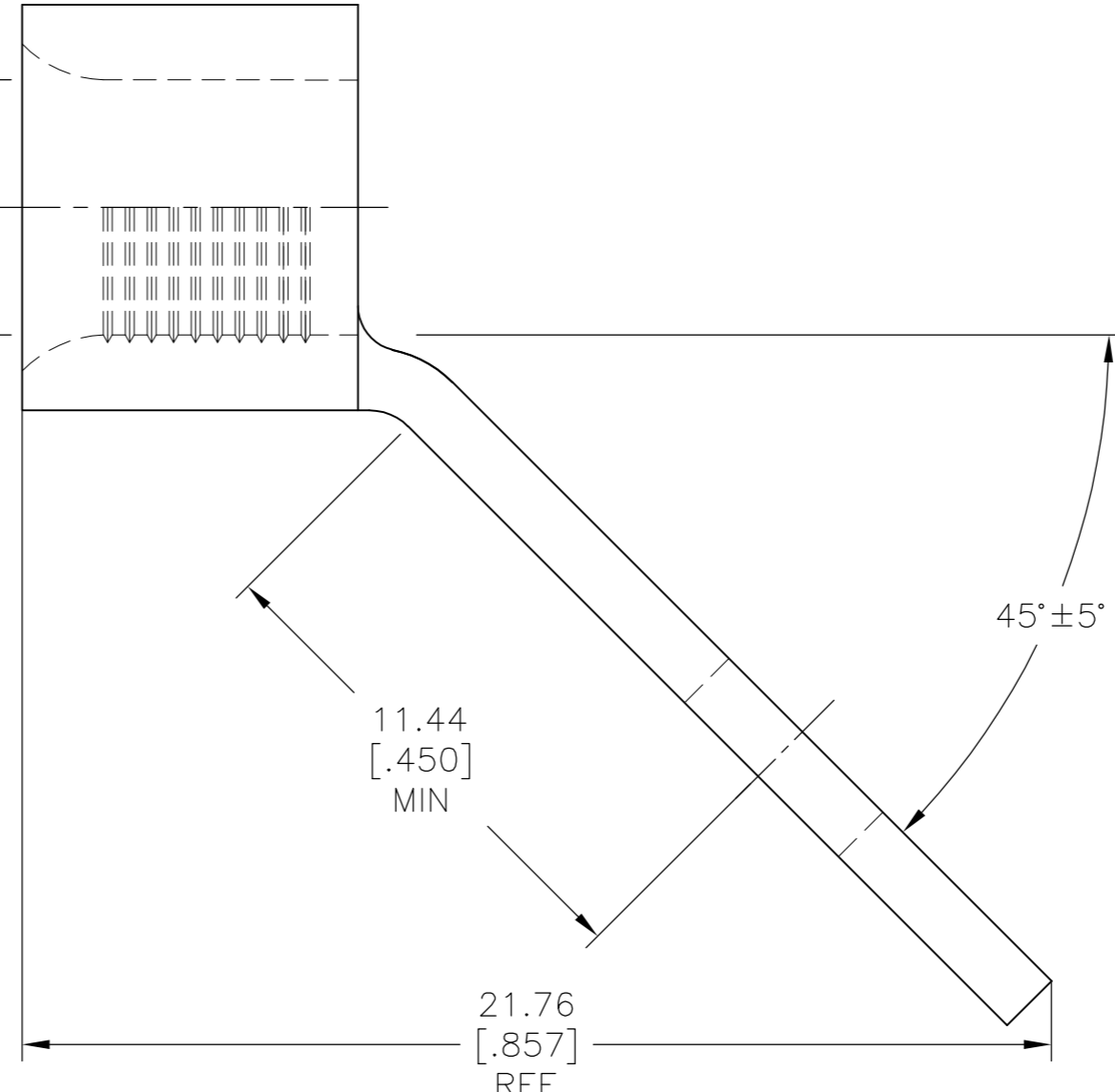
- 1 STAMP AMP 6* APPROX AS SHOWN.
- 2 MATERIAL THICKNESS: 1.44±0.08[.057±.003].



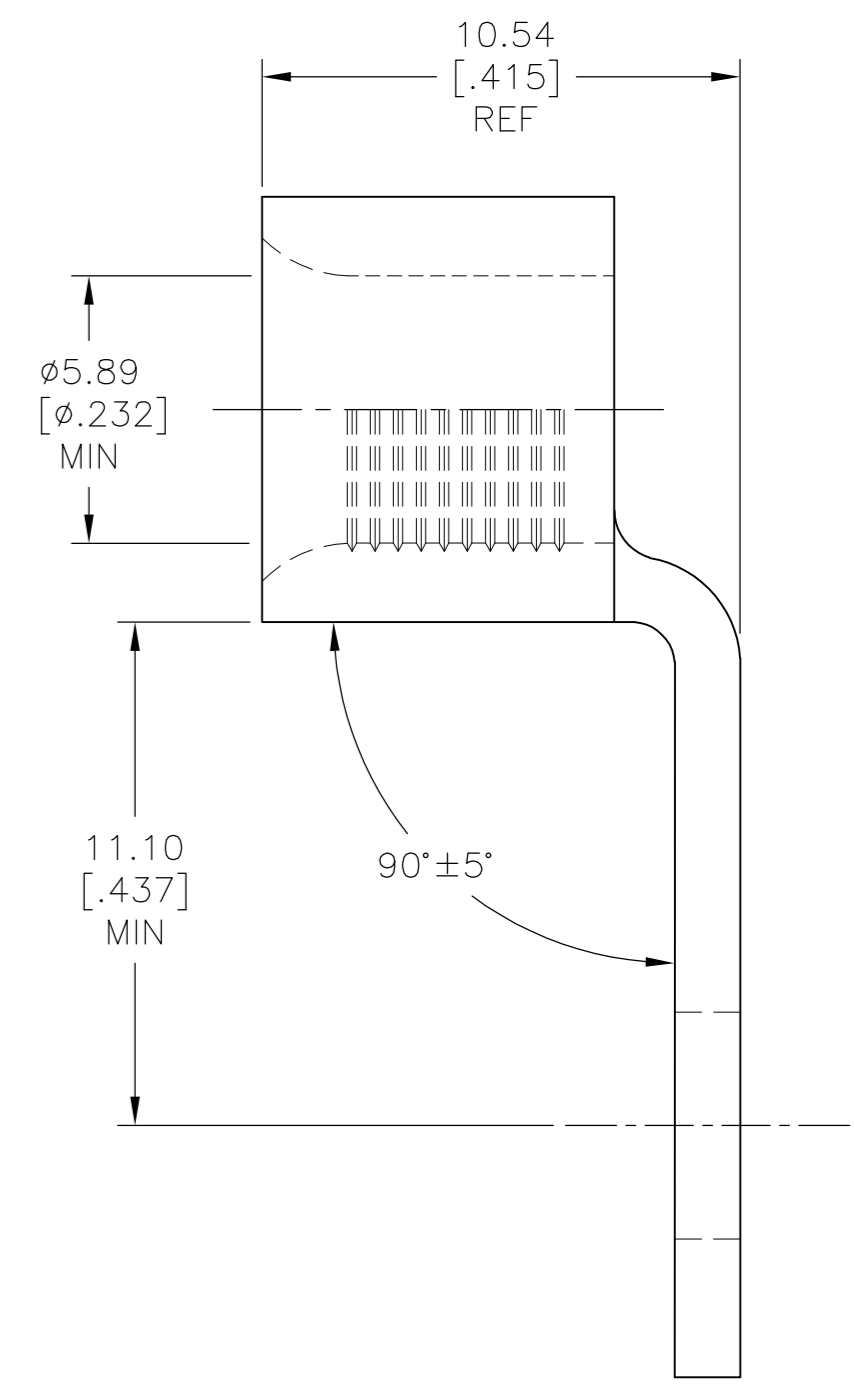
FOR 1958522-1 ONLY



FOR 1958522-4 ONLY



FOR 1958522-2 ONLY



FOR 1958522-3 ONLY

**PRELIMINARY - NOT RELEASED
FOR PRODUCTION**

QTY.	PACKAGE TYPE	BEND ANGLE	PART NUMBER
100	LOOSE PIECE	60°	1958522-4
		90°	1958522-3
		45°	1958522-2
		30°	1958522-1

AMP INCORPORATED CUSTOMER SERVICE SYSTEMS		MAX RECOMMENDED OPERATING TEMPERATURE: 343°C[649°F] MAX
FOR ADDITIONAL PRODUCT INFORMATION OR COPIES OF DRAWINGS AND TECHNICAL DOCUMENTS	PRODUCT INFORMATION CENTER 1-800-522-6752	VOLTAGE RATING: N/A
FOR APPLICATION TOOLING INFORMATION	TOOLING ASSISTANCE CENTER 1-800-722-1111	WIRE CROSS SECTIONAL AREA RANGE: 10.5-16.8mm²[20,800-33,100] CIR MILS SOLID OR STRANDED
FOR ORDER ENTRY	1-800-526-5142	

THIS DRAWING IS A CONTROLLED DOCUMENT.

DIMENSIONS: mm [INCHES]	TOLERANCES UNLESS OTHERWISE SPECIFIED:	DWN NAGALAKSHMI K 27AUG2016	
	0 PLC ± -	CHK ROHDE DANIEL F 27AUG2016	
	1 PLC ± -	APVD ROHDE DANIEL F 27AUG2016	
	2 PLC ± -	PRODUCT SPEC	
MATERIAL COPPER PER ASTM B-152 ANNEALED	FINISH NICKEL PLATE 0.00762[.000300]MIN. THK PER SAE AMS Q0-N-290	APVD ROHDE DANIEL F 27AUG2016	NAME TERMINAL, RING TONGUE, HEAT RESISTANT, STRATO-THERM™
		WEIGHT	SIZE A2
		CUSTOMER DRAWING	CAGE CODE 00779
			DRAWING NO C=1958522
			RESTRICTED TO
			SCALE 6:1
			SHEET 1 OF 1
			REV 2