

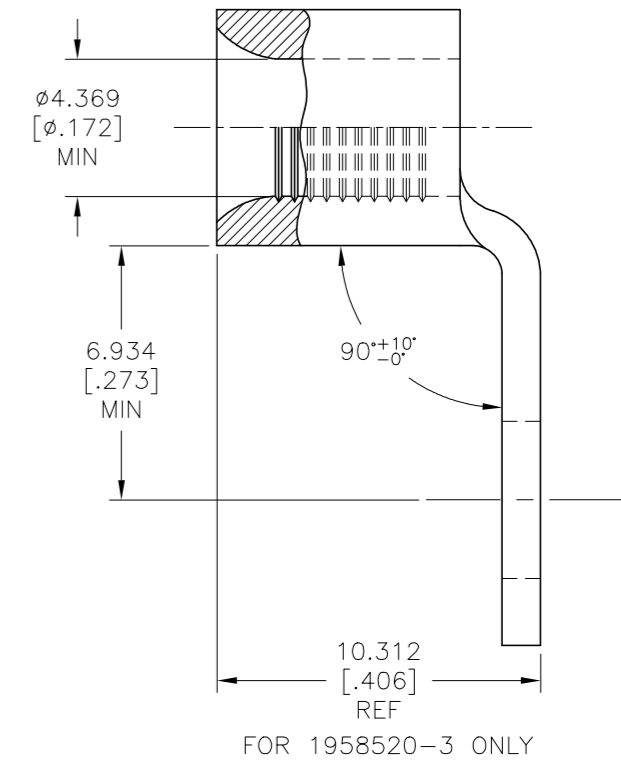
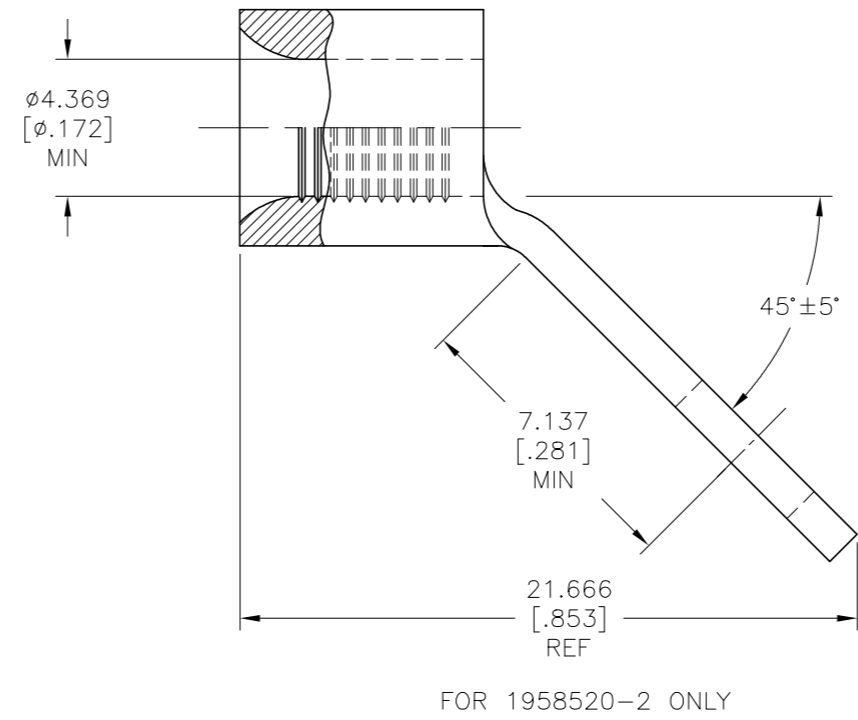
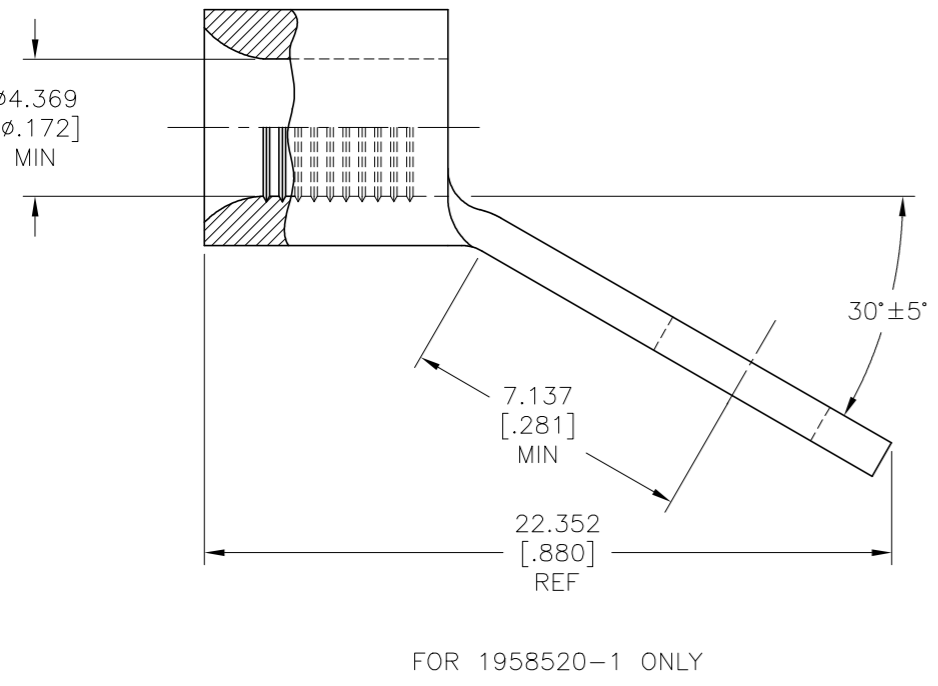
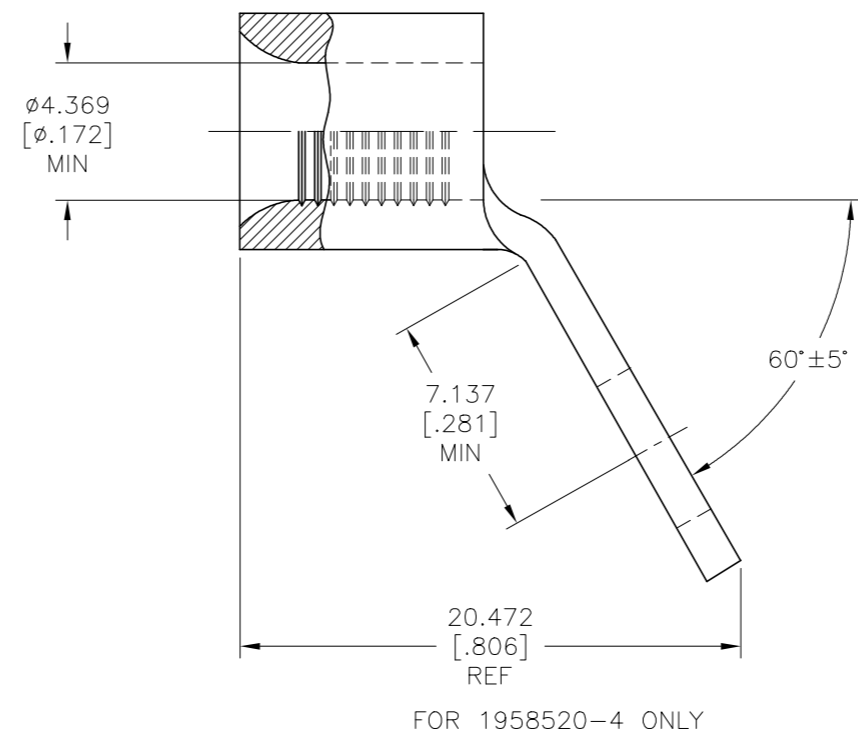
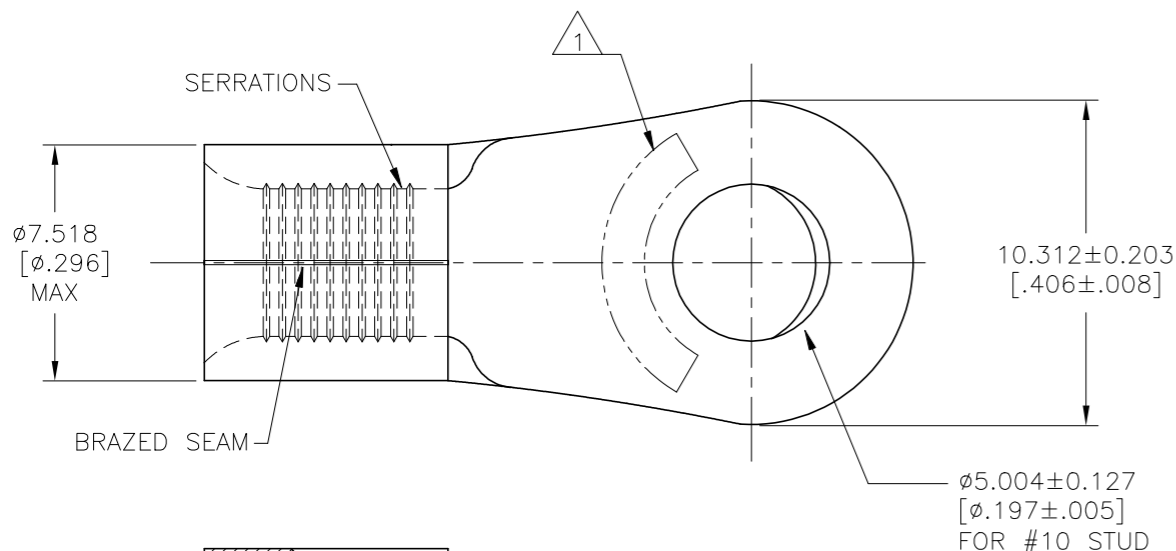
THIS DRAWING IS UNPUBLISHED. RELEASED FOR PUBLICATION
 © COPYRIGHT - By - ALL RIGHTS RESERVED.

REVISIONS					
P	LTR	DESCRIPTION	DATE	DWN	APVD
2		REVISED PER ECO-16-014628	14OCT2016	RS	DR
A		REVISED PER ECO-18-007844	21MAY2018	RS	DR
A1		REVISED PER ECO-19-006700	30APR2019	RS	DR

AMP
WIRE RANGE

8 AWG
SOLID OR STRANDED

- 1 STAMP AMP 8* APPROX AS SHOWN.
- 2 COPPER PER ASTM B-152, ANNEALED, MATERIAL THK: 1.219±0.076[.048±.003].
- 3 NICKEL PLATE 0.00762[.000300]MIN. THK PER SAE AMS QQ-N-290.



QTY.	PACKAGE TYPE	BEND ANGLE	PART NUMBER
100	LOOSE PIECE	60°	1958520-4
		90°	1958520-3
		45°	1958520-2
		30°	1958520-1

AMP INCORPORATED CUSTOMER SERVICE SYSTEMS		MAX RECOMMENDED OPERATING TEMPERATURE: 343°C[649°F] MAX
FOR ADDITIONAL PRODUCT INFORMATION OR COPIES OF DRAWINGS AND TECHNICAL DOCUMENTS	PRODUCT INFORMATION CENTER 1-800-522-6752	VOLTAGE RATING: NOT APPLICABLE
FOR APPLICATION TOOLING INFORMATION	TOOLING ASSISTANCE CENTER 1-800-722-1111	WIRE CROSS SECTIONAL AREA RANGE: 6.64-10.50mm ² [13,100-20,800] CIR MILS
FOR ORDER ENTRY	1-800-526-5142	SOLID OR STRANDED

THIS DRAWING IS A CONTROLLED DOCUMENT.		DWN RAVI S 21MAY2018	TE Connectivity Ltd.	
DIMENSIONS: mm [INCHES]		CHK ROHDE DANIEL F 21MAY2018	NAME ROHDE DANIEL F	
TOLERANCES UNLESS OTHERWISE SPECIFIED:		APVD ROHDE DANIEL F 21MAY2018	PRODUCT SPEC 108-32046	
0 PLC ± -		APPLICATION SPEC 114-2162		
1 PLC ± -		SIZE A2		
2 PLC ± -		CAGE CODE 00779		
3 PLC ± 0.127[.005]		DRAWING NO C-1958520		
4 PLC ± -		RESTRICTED TO -		
ANGLES ± -		WEIGHT -		
MATERIAL 2		FINISH 3		
CUSTOMER DRAWING		SCALE 6:1 SHEET 1 of 1 REV A1		