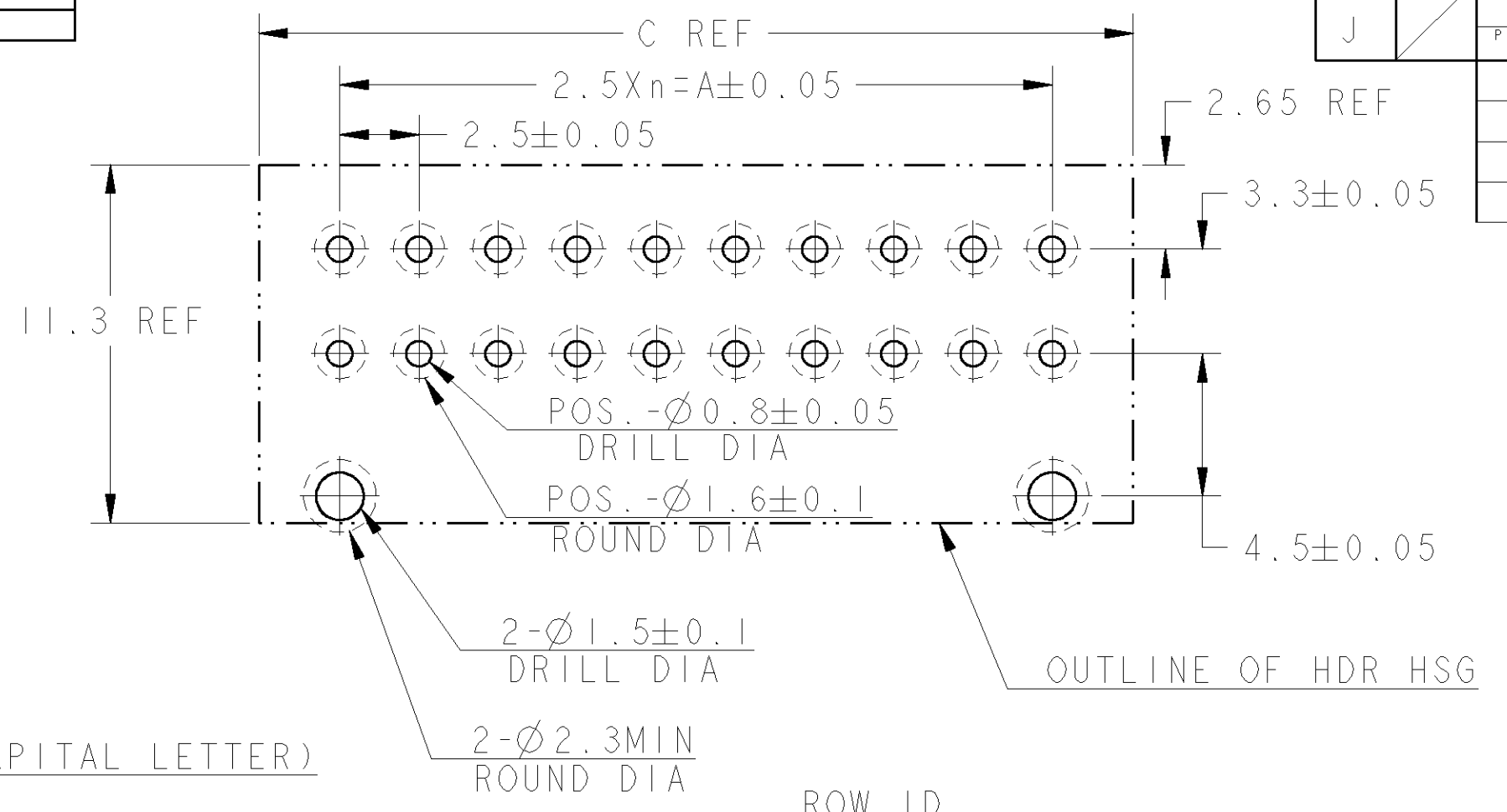
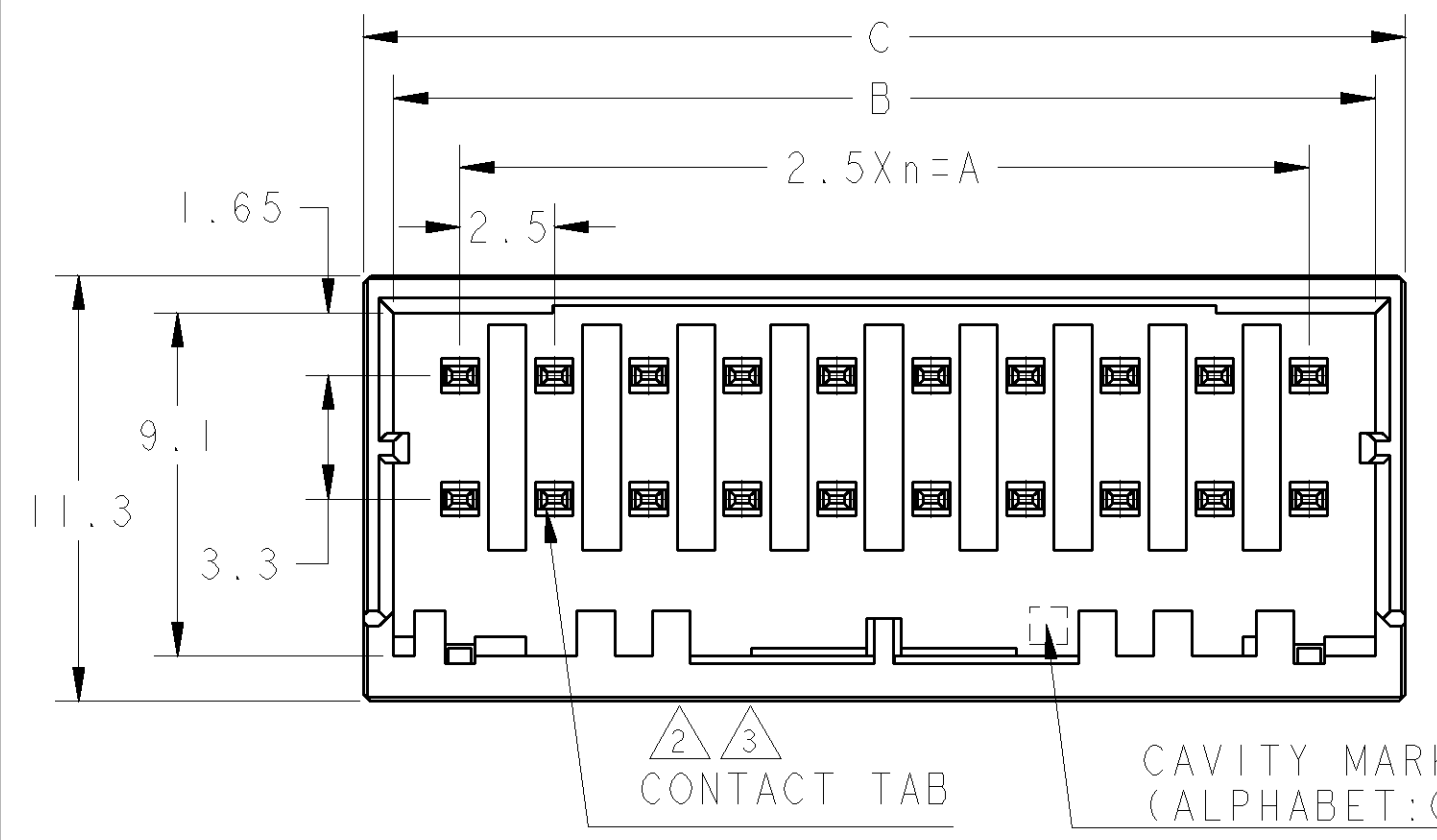


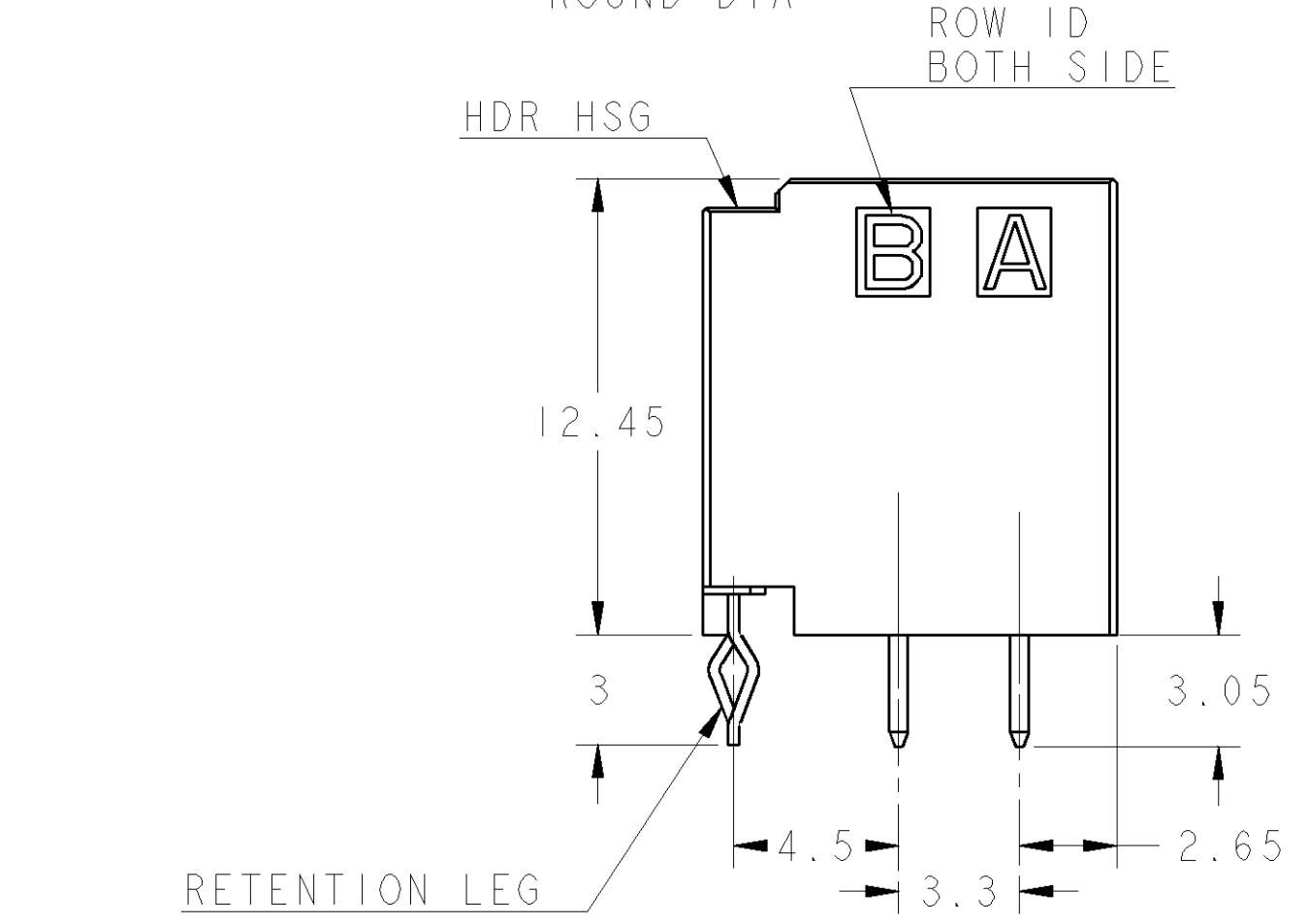
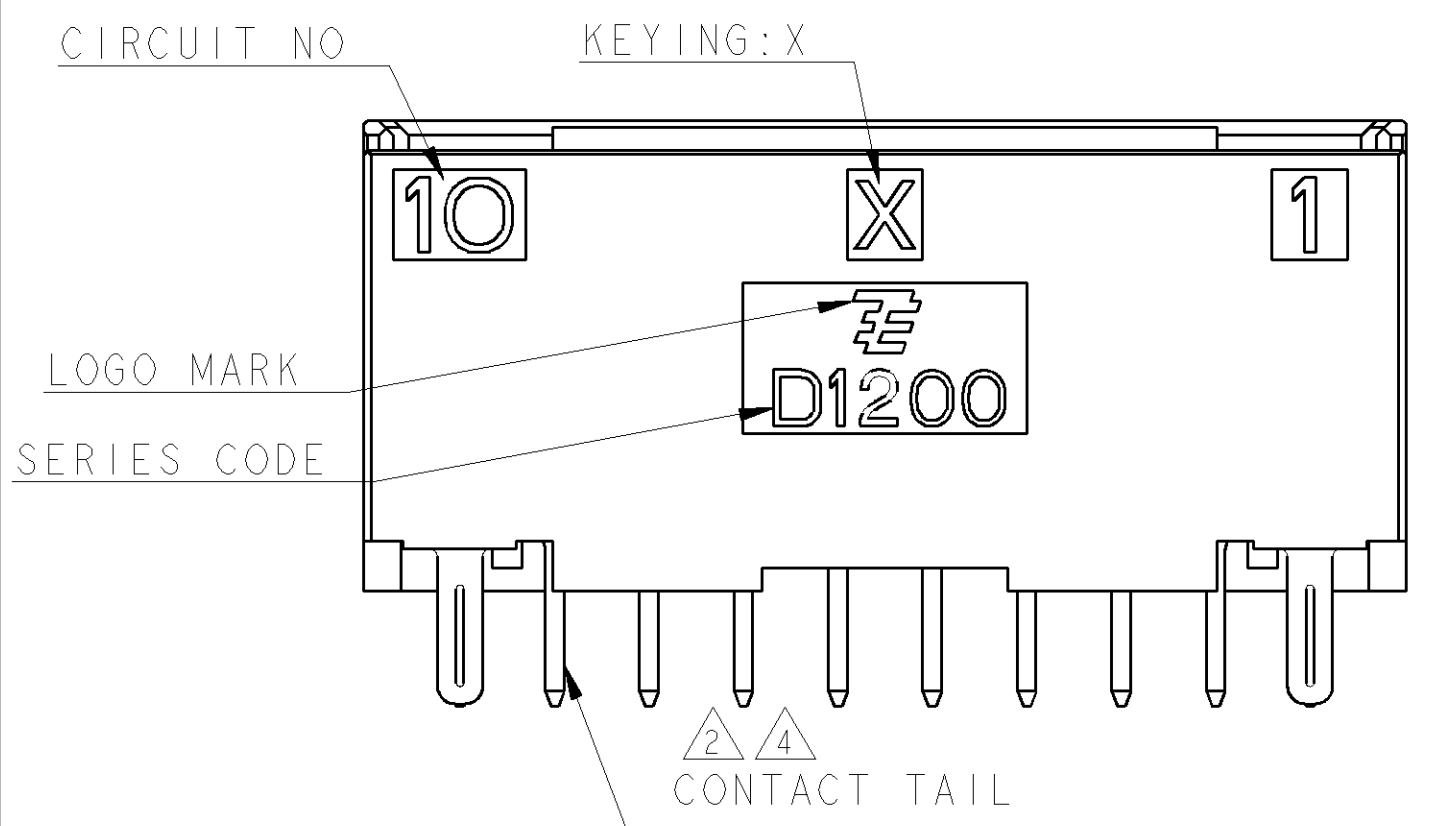
THIS DRAWING IS UNPUBLISHED. RELEASED FOR PUBLICATION 2006
 © COPYRIGHT 2006 BY TYCO ELECTRONICS CORPORATION. ALL INTERNATIONAL RIGHTS RESERVED.

REVISONS		DATE	DWN	APVD
P	LTR	DESCRIPTION		
B		REVISED PER ECR-10-007266	21APR2010	HMR T.M



RECOMMEND PC BOARD HOLE PATTERN : CONNECTOR MOUNT SIDE (NOT ACCUMULATE TOLERANCE)
 PC BOARD THICKNESS : 1.0~1.6±0.1
 推奨基板取付寸法: コネクタ搭載面 (非累積公差)
 PC基板厚: 1.0~1.6±0.1

- 4-1939261-□ : YELLOW (Y-KEY)
- 3-1939261-□ : YELLOW (X-KEY)
- 2-1939261-□ : NATURAL (Y-KEY)
- 1-1939261-□ : NATURAL (X-KEY)



POS	n	KEY	A	B	C	PART NO	(COLOR)
20	9	Y	22.5	26.0	27.6	4-1939261-0	(YELLOW)
20	9	X	22.5	26.0	27.6	3-1939261-0	(YELLOW)
20	9	Y	22.5	26.0	27.6	2-1939261-0	(NATURAL)
20	9	X	22.5	26.0	27.6	1-1939261-0	(NATURAL)
12	5	Y	12.5	16.0	17.6	4-1939261-6	(YELLOW)
12	5	X	12.5	16.0	17.6	3-1939261-6	(YELLOW)
12	5	Y	12.5	16.0	17.6	2-1939261-6	(NATURAL)
12	5	X	12.5	16.0	17.6	1-1939261-6	(NATURAL)
10	4	Y	10.0	13.5	15.1	4-1939261-5	(YELLOW)
10	4	X	10.0	13.5	15.1	3-1939261-5	(YELLOW)
10	4	Y	10.0	13.5	15.1	2-1939261-5	(NATURAL)
10	4	X	10.0	13.5	15.1	1-1939261-5	(NATURAL)
8	3	Y	7.5	11.0	12.6	4-1939261-4	(YELLOW)
8	3	X	7.5	11.0	12.6	3-1939261-4	(YELLOW)
8	3	Y	7.5	11.0	12.6	2-1939261-4	(NATURAL)
8	3	X	7.5	11.0	12.6	1-1939261-4	(NATURAL)
6	2	Y	5.0	8.5	10.1	4-1939261-3	(YELLOW)
6	2	X	5.0	8.5	10.1	3-1939261-3	(YELLOW)
6	2	Y	5.0	8.5	10.1	2-1939261-3	(NATURAL)
6	2	X	5.0	8.5	10.1	1-1939261-3	(NATURAL)
4	1	Y	2.5	6.0	7.6	4-1939261-2	(YELLOW)
4	1	X	2.5	6.0	7.6	3-1939261-2	(YELLOW)
4	1	Y	2.5	6.0	7.6	2-1939261-2	(NATURAL)
4	1	X	2.5	6.0	7.6	1-1939261-2	(NATURAL)

20POS(X-KEY):
 1-1939261-0(NATURAL)
 3-1939261-0(YELLOW)

1. MATERIAL
 HOUSING: GLASS FILED THERMO PLASTIC POLYESTER(94V-0)
 COLOR: EXCLUDING BLACK
 CONTACT: COPPER ALLOY
 RETENTION LEG: PRE-TIN COPPER ALLOY

1. 材料
 ハウジング: ガラス入り熱可塑性ポリエステル樹脂(94V-0)
 色: 黒以外
 コンタクト: 銅合金
 リテンションレグ: 錫めっき済銅合金

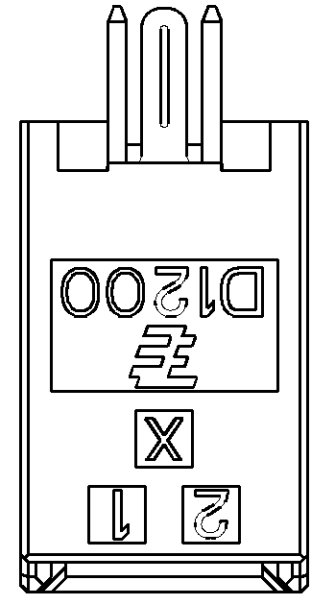
- ②. FINISH(ALL OVER): NICKEL PL. 1.27μmMIN
- ③. FINISH(CONTACT AREA): GOLD PL. 0.38μmMIN AFTER ②
- ④. FINISH(CONTACT TAIL): TIN PL. 2μmMIN AFTER ②
- 5. THE SHAPE, SIZE AND POSITION OF THE CHARACTER SHOW THE OUTLINE. THEY DON'T SHOW DETAILS.
- 6. THE KEYING ARRANGEMENT OF "Y" IS SYMMETRIC WITH "X".

- ②. めっき-全面: ニッケル下地めっき1.27μm以上
- ③. めっき-接触部: ②の上に金めっき0.38μm以上
- ④. めっき-コンタクト半田付部: ②の上に錫めっき2μm以上
- 5. 文字の形状、大きさ、および位置については、大略を示すものであり、詳細を示すものではありません。
- 6. Y KEY形状は、X KEY形状と左右対称

DIMENSIONS: 単位: 稀		TOLERANCES UNLESS OTHERWISE SPECIFIED:		DWN M. MAEBASHI 19APR2006		Tyco Electronics Corporation	
0-PLC ±		一般公差 ±0.3, ±3°		CHK T. KUDO 19APR2006		Kawasaki, Japan	
1-PLC ±		2-PLC ±		APVD D. MITSUGI 19APR2006		NAME 名義	
2-PLC ±		3-PLC ±		PRODUCT SPEC 108-78268		DYNAMIC D1200D 2.5mmPITCH	
3-PLC ±		4-PLC ±		APPLICATION SPEC 取付適用規格 114-5377		HDR ASSY, V-TYPE, COLOR	
4-PLC ±		ANGLES ±		WEIGHT		4-20POS	
FINISH 仕上		MATERIAL 材料		CUSTOMER DRAWING		RESTRICTED TO	
				SCALE 5:1		SHEET 1 OF 3	
				REV B			

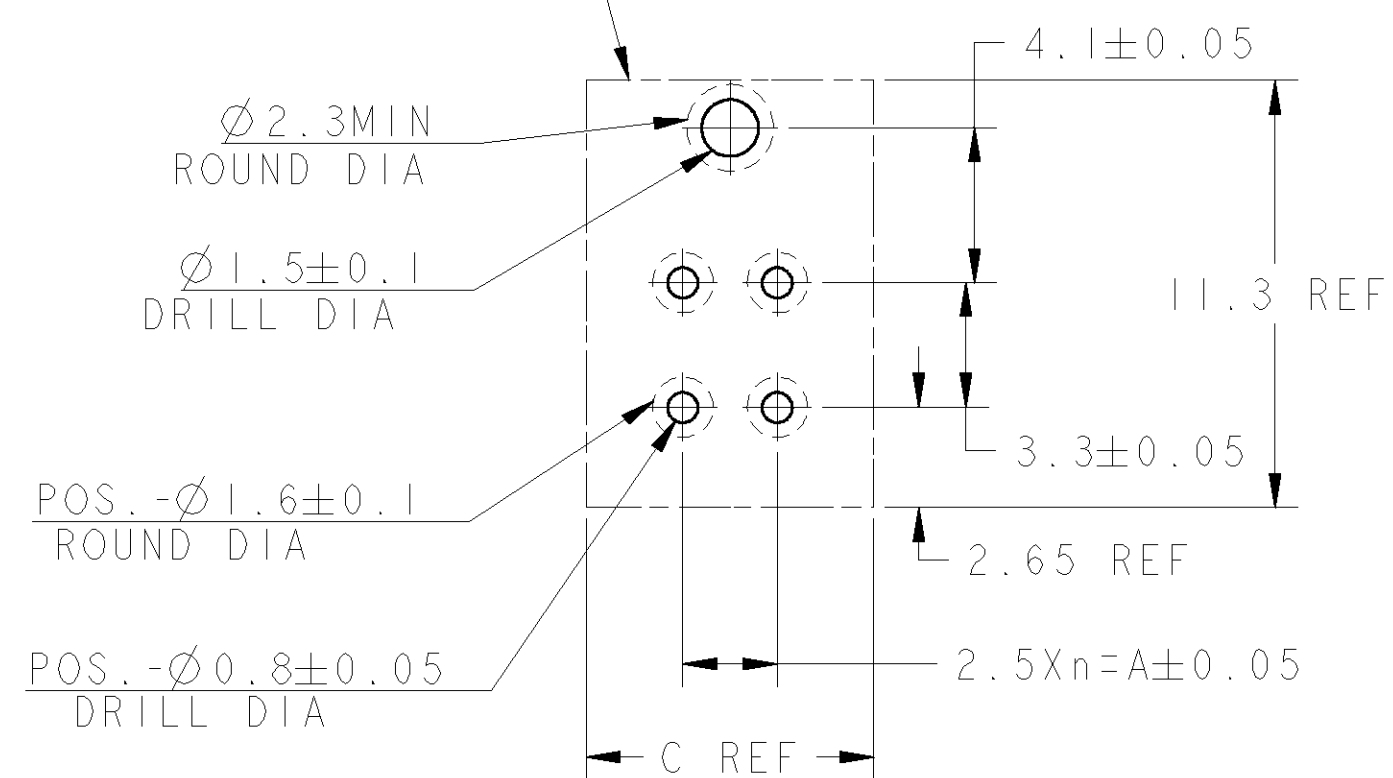
THIS DRAWING IS UNPUBLISHED. RELEASED FOR PUBLICATION 2006
 © COPYRIGHT 2006 BY TYCO ELECTRONICS CORPORATION. ALL INTERNATIONAL RIGHTS RESERVED.

LOC	DIST	REVISIONS			
P	LTR	DESCRIPTION	DATE	DWN	APVD
J		SEE SHEET 1 OF 3			



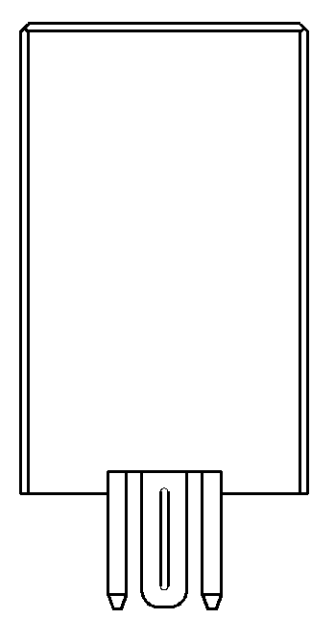
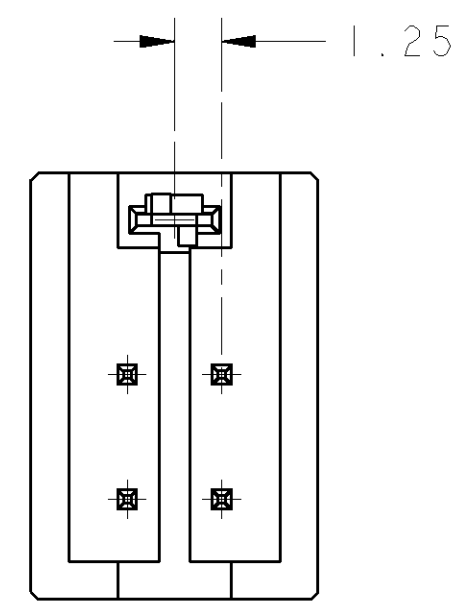
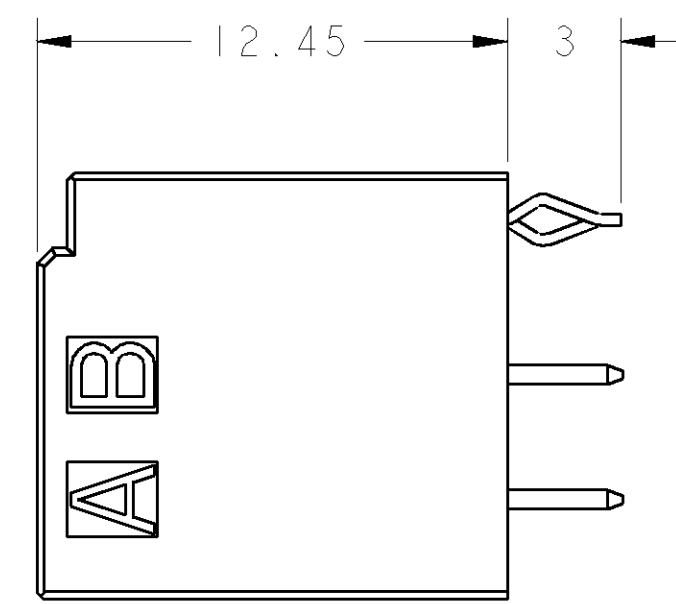
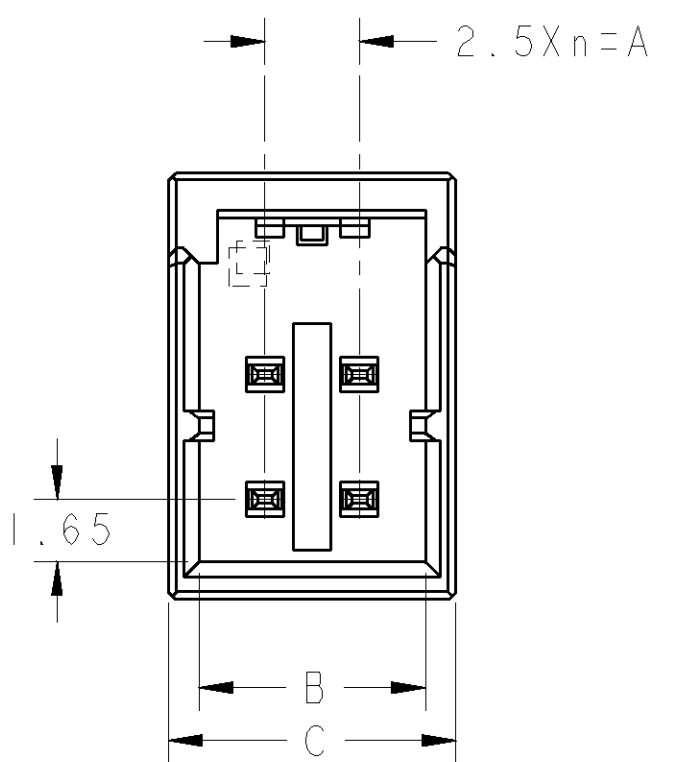
4POS(X-KEY):
 1-1939261-2(NATURAL)
 3-1939261-2(YELLOW)

OUTLINE OF HDR HSG



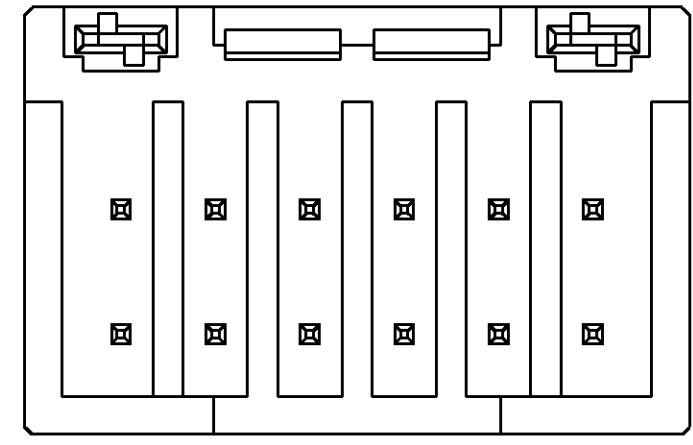
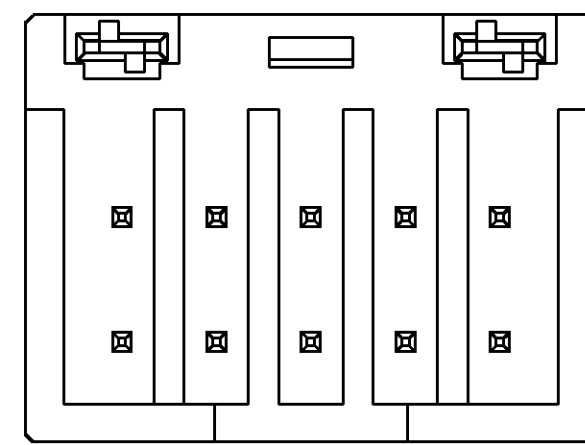
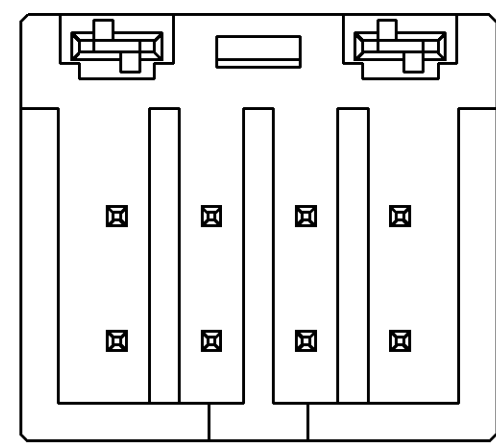
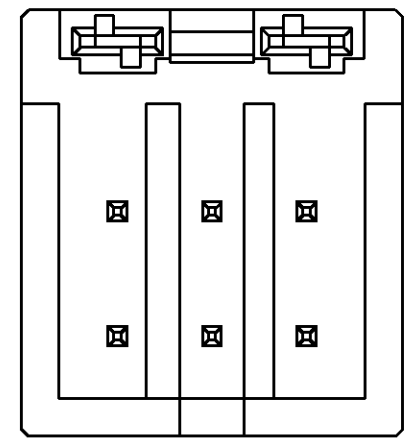
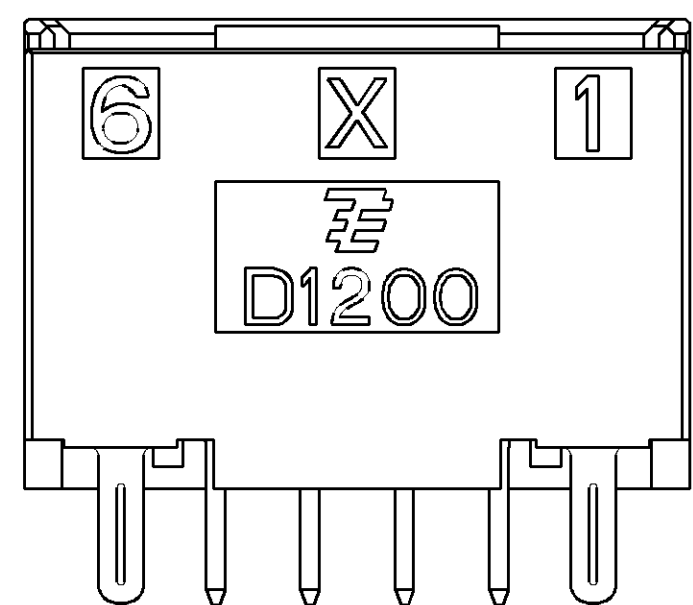
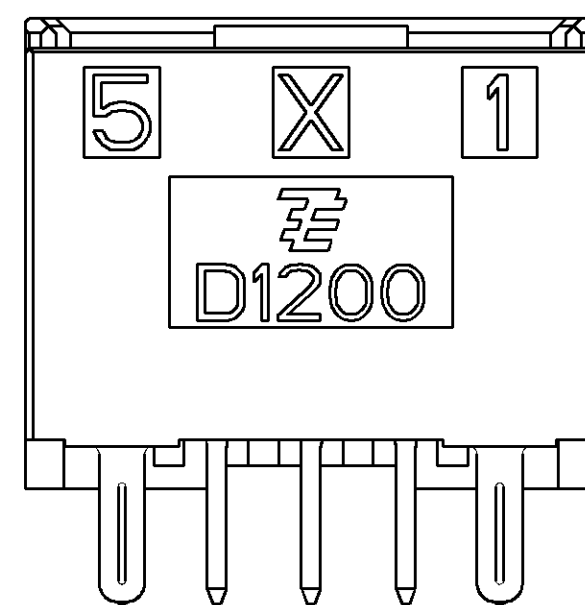
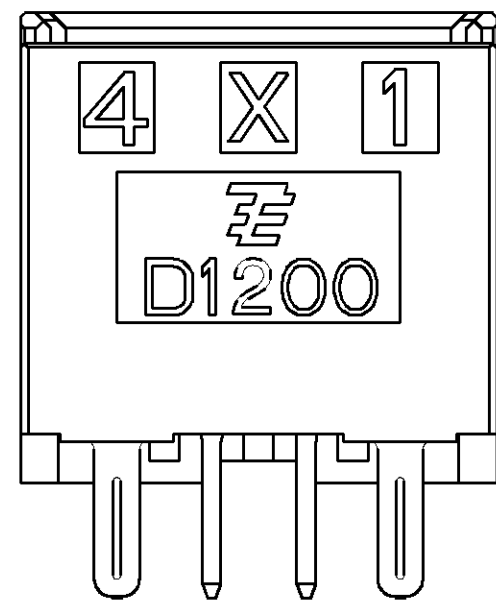
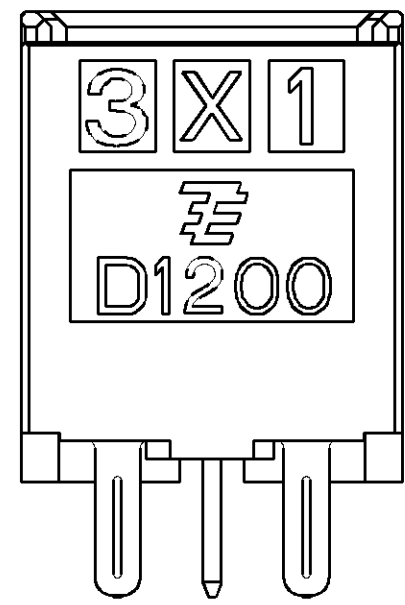
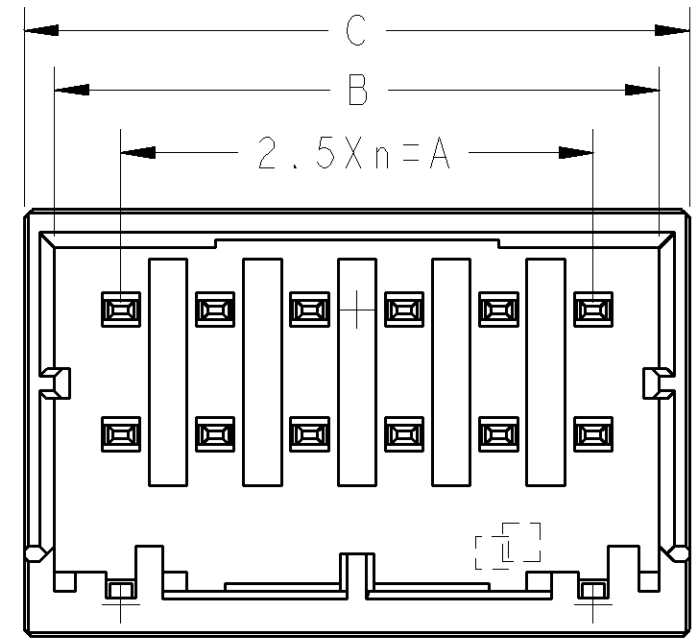
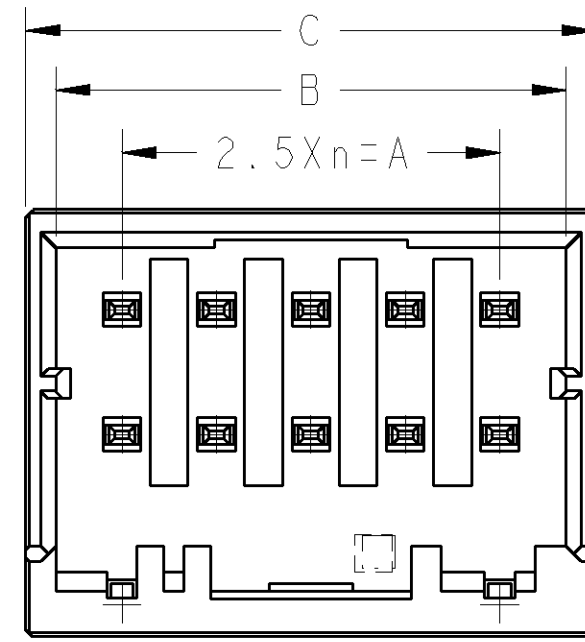
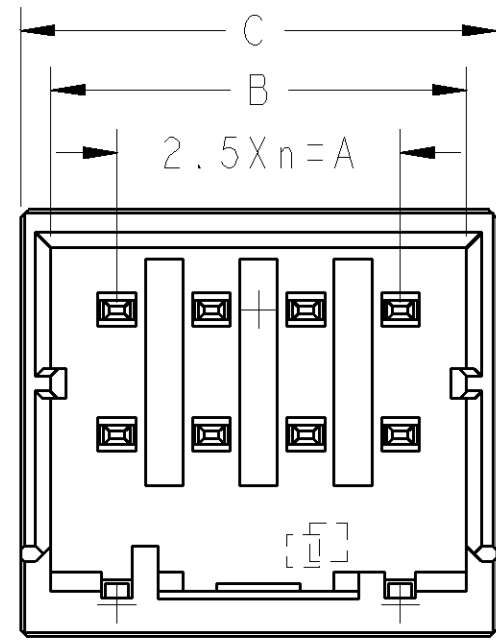
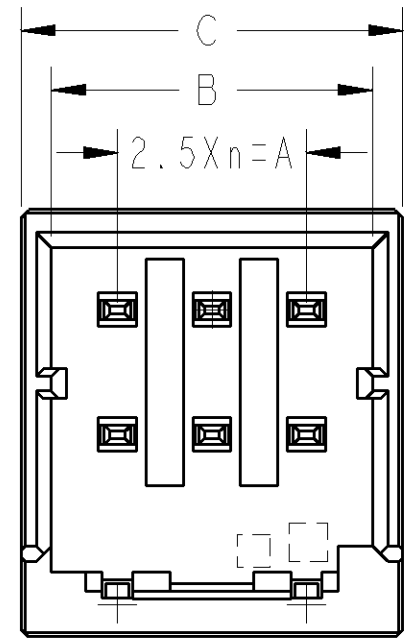
RECOMMEND PC BOARD HOLE PATTERN
 : CONNECTOR MOUNT SIDE
 (NOT ACCUMULATE TOLERANCE)
 PC BOARD THICKNESS : 1.0~1.6±0.1
 推奨基板取付穴寸法: コネクタ搭載面 (非累積公差)
 PC基板厚: 1.0~1.6±0.1

ONLY 4POS



THIS DRAWING IS A CONTROLLED DOCUMENT FOR TYCO ELECTRONICS CORPORATION. IT IS SUBJECT TO CHANGE AND THE CONTROLLING ENGINEERING ORGANIZATION SHOULD BE CONTACTED FOR THE LATEST REVISION.		DWN M. MAEBASHI 19APR2006	Tyco Electronics Corporation Kawasaki, Japan	
DIMENSIONS: mm		CHK T. KUDO 19APR2006	NAME DYNAMIC D1200D 2.5mmPITCH HDR ASSY, V-TYPE, COLOR 4-20POS	
TOLERANCES UNLESS OTHERWISE SPECIFIED:		APVD D. MITSUGI 19APR2006	SIZE A200779	CAGE CODE C-1939261
0 PLC ±		PRODUCT SPEC 108-78268	SCALE 5:1	SHEET 2 OF 3
1 PLC ±		APPLICATION SPEC 114-5377	RESTRICTED TO	REV B
2 PLC ±		WEIGHT		
3 PLC ±		CUSTOMER DRAWING		
4 PLC ±				
ANGLES ±				
FINISH ±				

LOC		DIST		REVISIONS		
P	LTR	DESCRIPTION	DATE	DWN	APVD	
J		SEE SHEET 1 OF 3				



6POS(X-KEY):
 1-1939261-3(NATURAL)
 3-1939261-3(YELLOW)

8POS(X-KEY):
 1-1939261-4(NATURAL)
 3-1939261-4(YELLOW)

10POS(X-KEY):
 1-1939261-5(NATURAL)
 3-1939261-5(YELLOW)

12POS(X-KEY):
 1-1939261-6(NATURAL)
 3-1939261-6(YELLOW)

<small>THIS DRAWING IS A CONTROLLED DOCUMENT FOR TYCO ELECTRONICS CORPORATION. IT IS SUBJECT TO CHANGE AND THE CONTROLLING ENGINEERING ORGANIZATION SHOULD BE CONTACTED FOR THE LATEST REVISION.</small>		DWN M. MAEBASHI 19APR2006 CHK T. KUDO 19APR2006 APVD D. MITSUGI 19APR2006	Tyco Electronics Corporation Kawasaki, Japan
DIMENSIONS: mm	TOLERANCES UNLESS OTHERWISE SPECIFIED: 0 PLC ± 1 PLC ± 2 PLC ± 3 PLC ± 4 PLC ± ANGLES ± FINISH	PRODUCT SPEC 108-78268 APPLICATION SPEC 114-5377 WEIGHT	NAME DYNAMIC D1200D 2.5mmPITCH HDR ASSY, V-TYPE, COLOR 4-20POS SIZE CAGE CODE DRAWING NO RESTRICTED TO A200779 C-1939261
MATERIAL		CUSTOMER DRAWING	SCALE 5:1 SHEET 3 OF 3 REV B