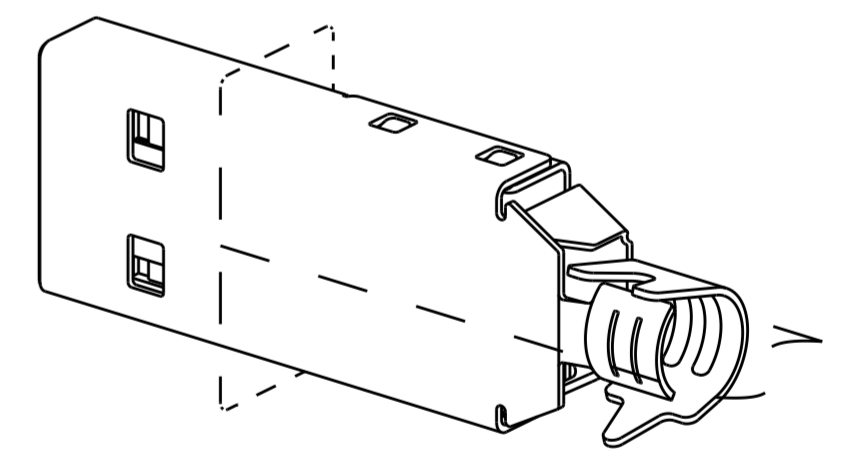
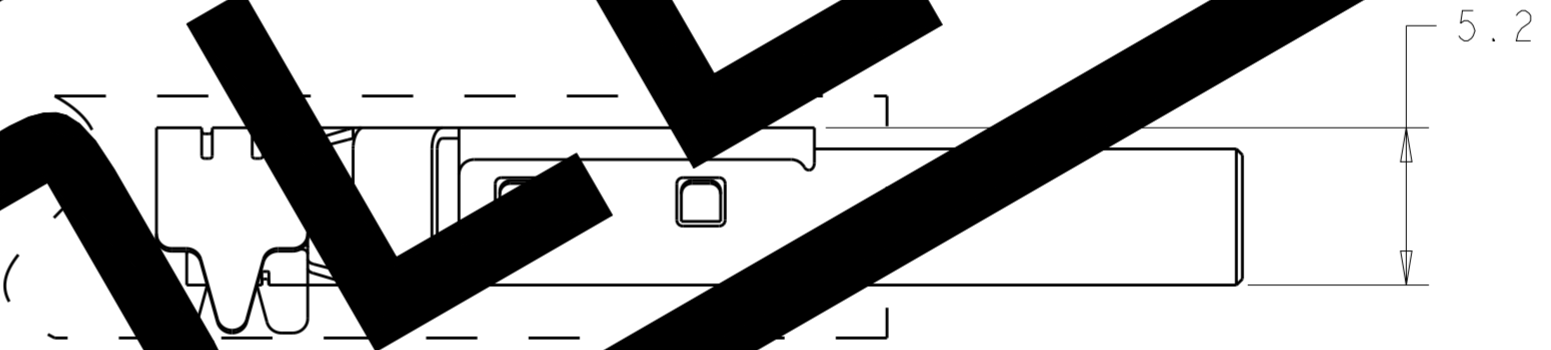
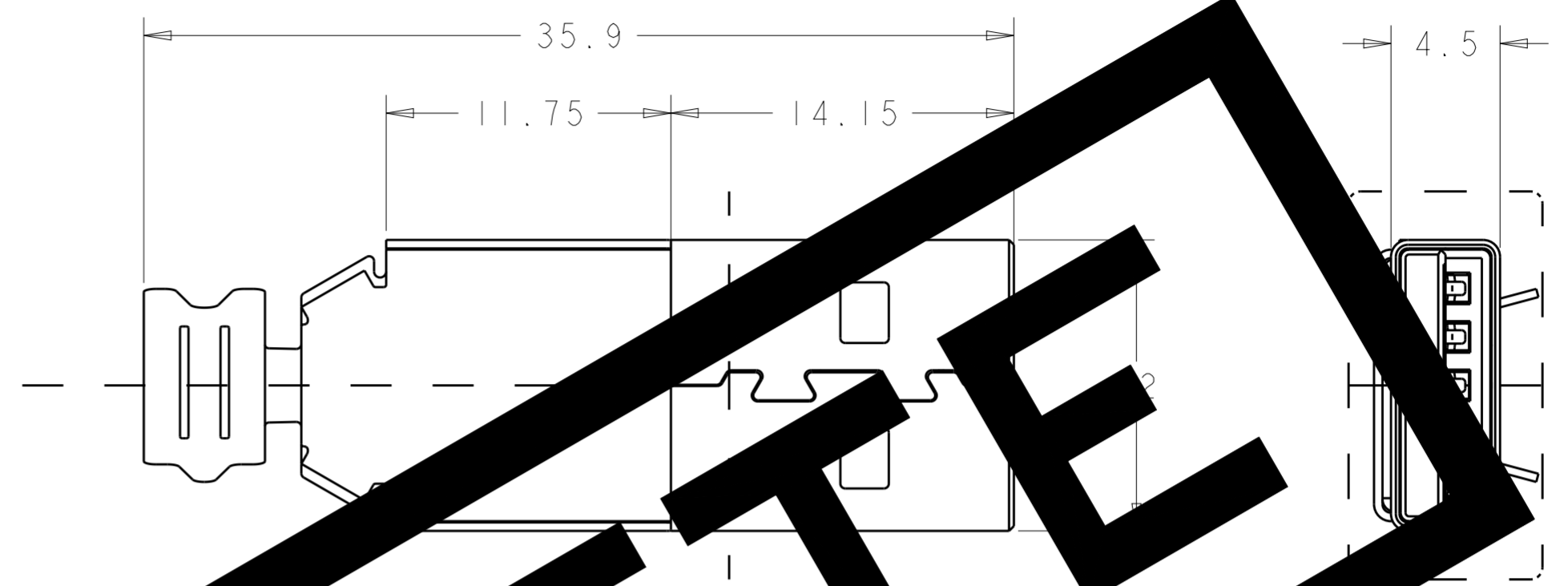
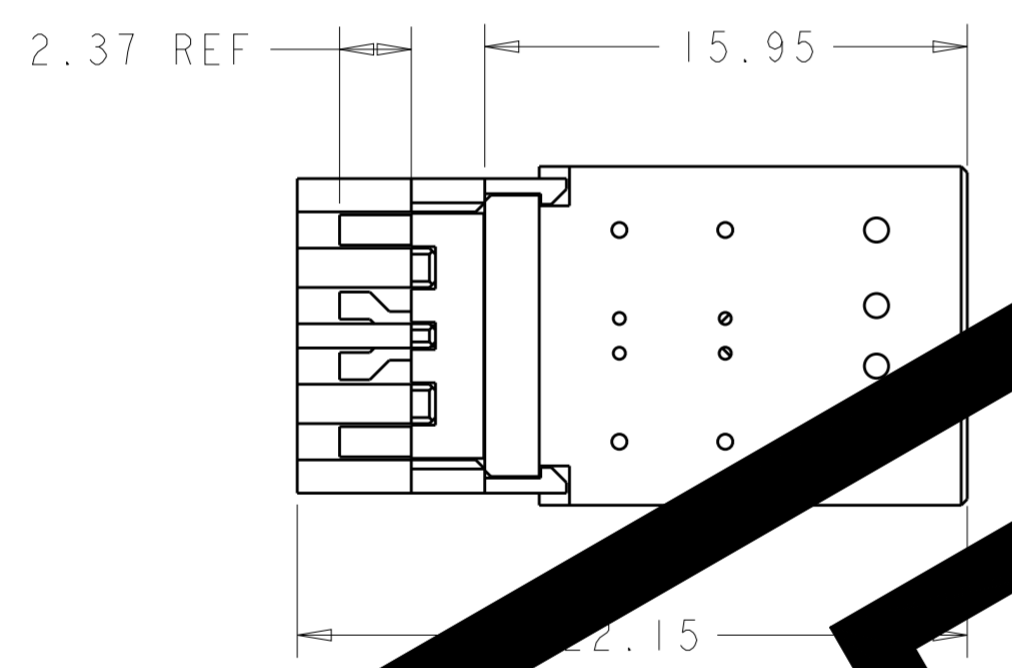
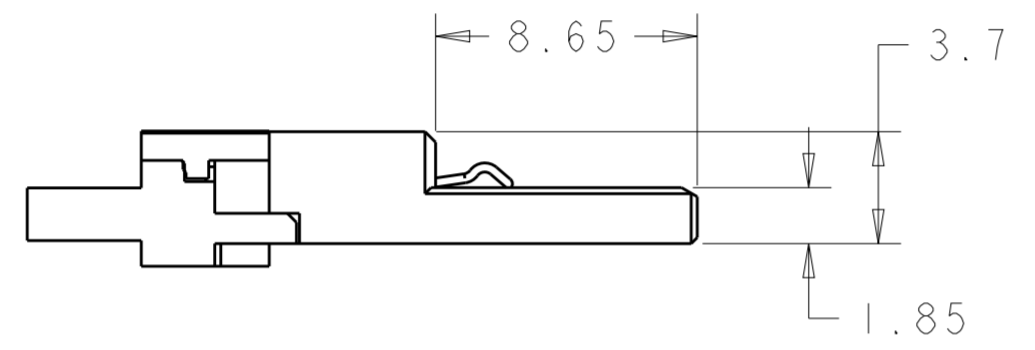
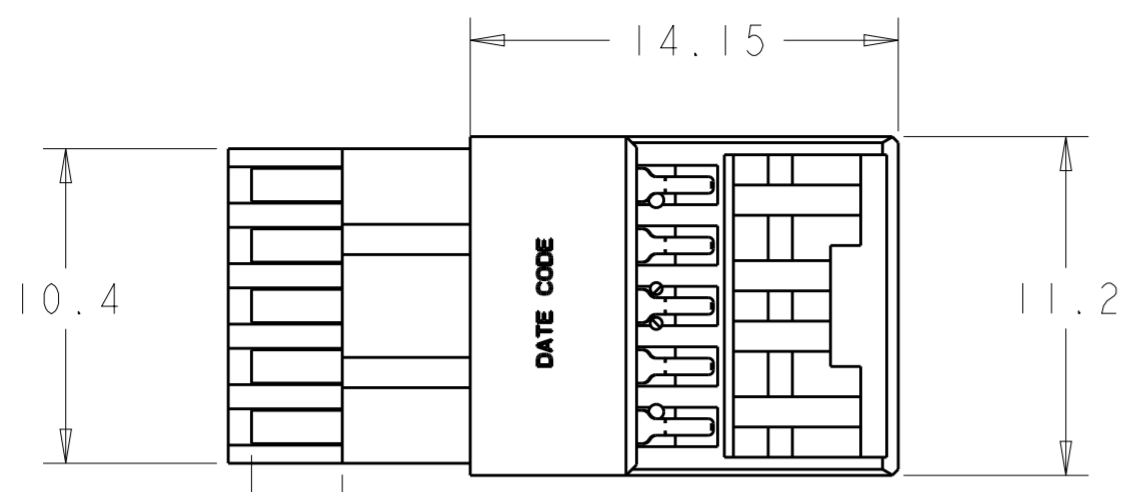


THIS DRAWING IS UNPUBLISHED. RELEASED FOR PUBLICATION 20
 © COPYRIGHT 20 BY TYCO ELECTRONICS CORPORATION. ALL RIGHTS RESERVED.

LOC	DIST	REVISIONS					
ES	00	P	LTR	DESCRIPTION	DATE	DWN	APVD
		A		INITIAL RELEASED PER ECR-11-002073	9FEB2011	A.L	S.Y
		B		OBSOLETE PER ECR-18-009100	15JUN2018	T.Z	S.L



OBSOLETE

BEFORE SHELL ASSEMBLY

AFTER ORGANIZER AND SHELL ASSEMBLY

CABLE ASSEMBLY SOLDER POINT

CONTACT

CABLE ASSEMBLY SOLDER REQUIREMENT TO AVOID SHORT ISSUE

1. MATERIAL:
 SHELL : CARBON STEEL
 CONTACTS: COPPER ALLOY
 HOUSING: THERMOPLASTIC, BLUE
2. PLATING:
 CONTACT: 0.76um MIN GOLD OR GOLD FLASHED OVER 0.76um MIN Pd-Ni ON MATING AREA, 2.54um MIN MATTE TIN ON SOLDER TAILS, 1.27um MIN NICKEL UNDER PLATING
 SHELL: NICKEL PLATING OVER COPPER PLATING
3. RECOMMENDED CABLE ASSEMBLY PROCESS:
 WIRE SOLDERING----->ENVELOPING GLUE AROUND SOLDER POINT
 ----->OVERMOLDING INNER PLASTIC----->OVER MOLDING OUTER PLASTIC

P/N: 1932266-1

THIS DRAWING IS A CONTROLLED DOCUMENT FOR TYCO ELECTRONICS CORPORATION. IT IS SUBJECT TO CHANGE AND THE CONTROLLING ENGINEERING ORGANIZATION SHOULD BE CONTACTED FOR THE LATEST REVISION.		DWN ALAN LIU 18AUG2009	Tyco Electronics Shanghai P.R.China 200233	
DIMENSIONS: mm		CHK MARTIN LI 18AUG2009	NAME -	
TOLERANCES UNLESS OTHERWISE SPECIFIED: 0 PLC ±0.25 1 PLC ±0.25 2 PLC ±0.25 3 PLC ± 4 PLC ± ANGLES ±		APVD STEVEN YAO 18AUG2009	PRODUCT SPEC -	
MATERIAL		APPLICATION SPEC -	SIZE A200779	
		FINISH	DRAWING NO C-1932266	
			RESTRICTED TO	
		CUSTOMER DRAWING	SCALE 2:1 SHEET 1 OF 1 REV B	