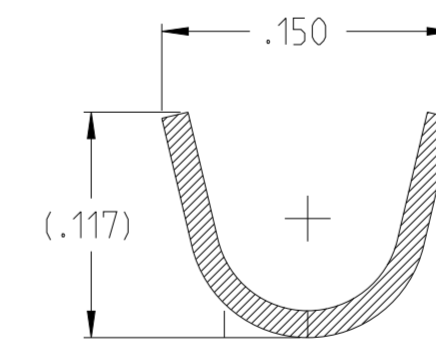
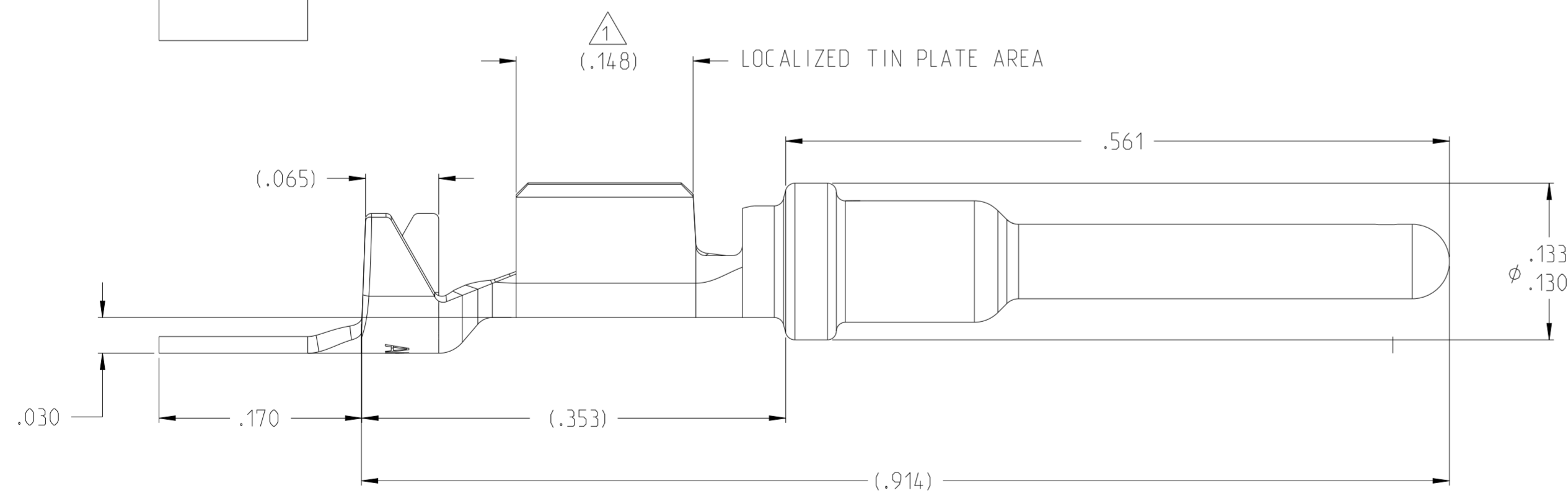
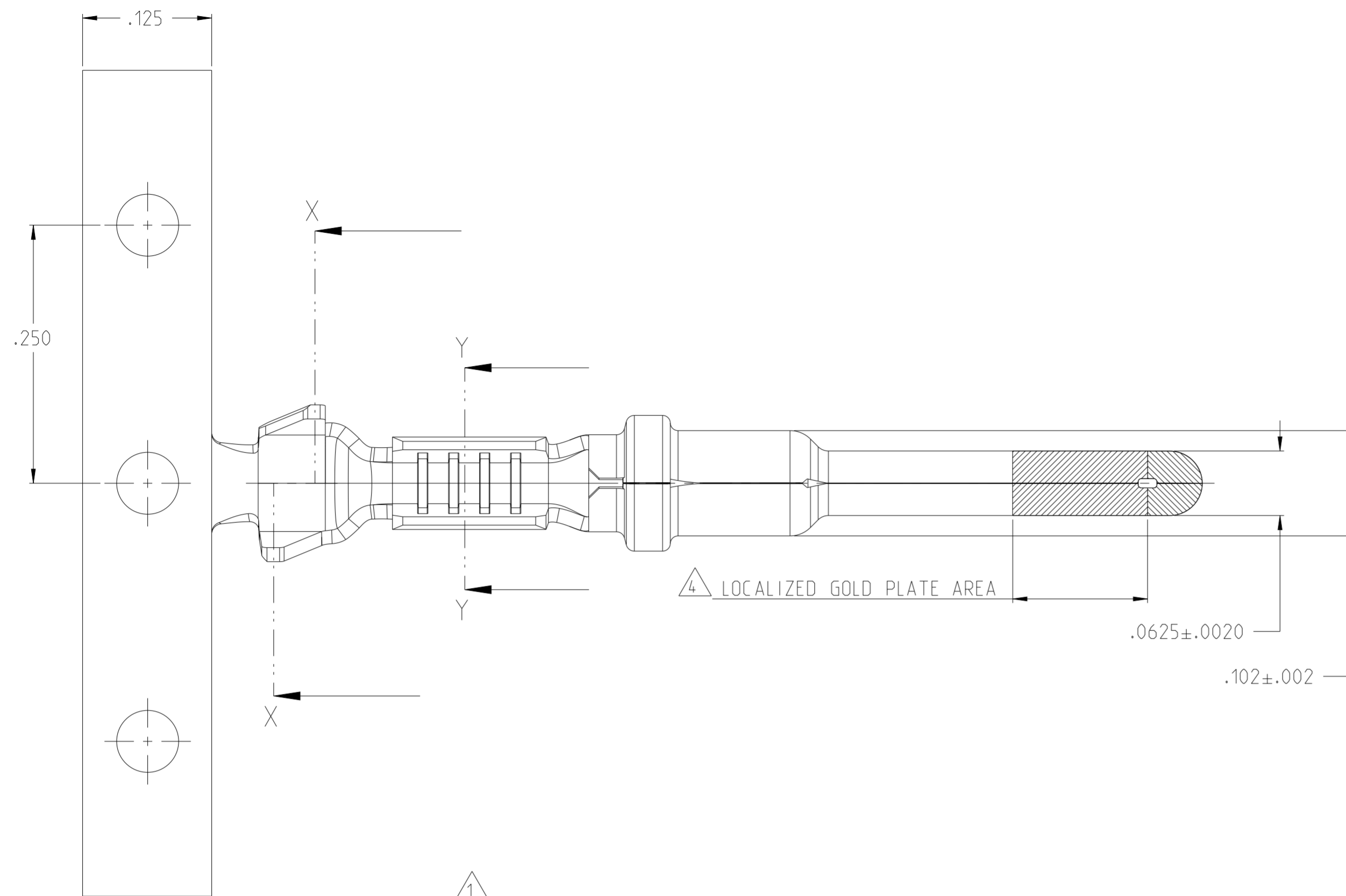


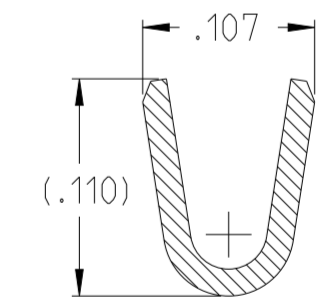
P	LTR	DESCRIPTION	DATE	DWN	APVD
B2		REVISED PER ECN-21-129868	23NOV2021	DRK	NRS
B3		REVISED PER ECR-21-124520	06JAN2022	NS	CB
B4		REVISED PER ECR-22-132933	18MAR2022	FC	CB

NOTES:

1. FINISH: PLATE 0.000100-0.000200 THK TIN IN LOCALIZED TIN PLATE AREA, ALL OVER 0.000040-0.000080 THK NICKEL.
2. CONTACT WILL BE LUBED WITH LUBRICANT PER TE CONNECTIVITY P/N 22014-4.
3. WIRE RANGE: 20-18 AWG WITH ISLUATION DIAMETERS OF 0.050-0.107 INCHES.
4. PLATE 0.000030 MIN THK SELECT GOLD IN LOCALIZED PLATE AREA. TIP PLATING AREA PLATE TO 0.000015 MIN THK.



SECTION X-X



SECTION Y-Y

1	1924463-3
1 4	1924463-1
FINISH	PART NUMBER

THIS DRAWING IS A CONTROLLED DOCUMENT.

DWN: DL DRUMMOND 27AUG2007  
 CHK: MP TRULL 27AUG2007  
 APVD: MP TRULL 27AUG2007

TE Connectivity

**PIN CONTACT**

MATERIAL: 0.014THK CU ALLOY

PRODUCT SPEC: -  
 APPLICATION SPEC: -  
 WEIGHT: -

SIZE: A2 | CAGE CODE: 00779 | DRAWING NO: 1924463 | RESTRICTED TO: -

CUSTOMER DRAWING | SCALE: 10:1 | SHEET: 1 OF 1 | REV: B4