

LOC	DIST	REVISIONS					
CE	00	P	LTR	DESCRIPTION	DATE	DWN	APVD
			D	REV PER ECO-12-019824	13NOV2012	JM	TE

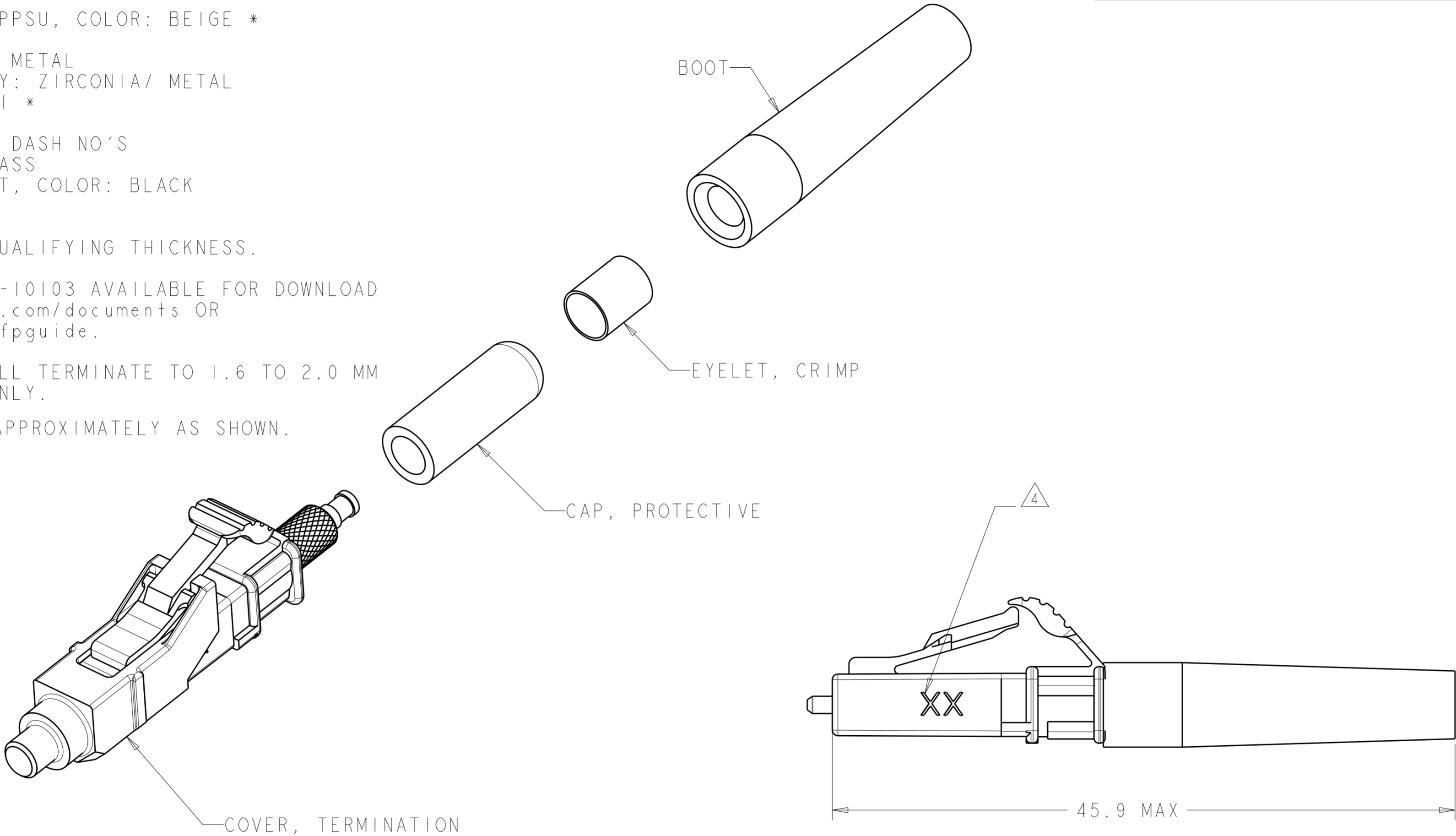
⚠ MATERIAL:
CONNECTOR ASSEMBLY:
CONNECTOR HOUSING: PPSU, COLOR: BEIGE *
REAR BODY: METAL
COMPRESSION SPRING: METAL
FERRULE SUB ASSEMBLY: ZIRCONIA/ METAL
INTERNAL SPLICE: PEI *
PLUNGER: METAL
BOOT: TPE, COLOR: SEE DASH NO'S
EYELET: TIN PLATED BRASS
TERMINATION COVER: PBT, COLOR: BLACK
PROTECTIVE CAP: VINYL

* UL94 V-0 RATED AT QUALIFYING THICKNESS.

2. INSTRUCTION SHEET: 408-10103 AVAILABLE FOR DOWNLOAD
AT www.tycoelectronics.com/documents OR
www.ampnetconnect.com/fpguide.

3. IMPORTANT: THIS KIT WILL TERMINATE TO 1.6 TO 2.0 MM
LOOSE JACKETED CABLE ONLY.

⚠ MARK WITH MM LOCATED APPROXIMATELY AS SHOWN.



AQUA	XG 50/125um	1918627-3
BLACK	50/125um	1918627-2
BEIGE	62.5/125um	1918627-1
BOOT COLOR	DESCRIPTION	PART NO.

THIS DRAWING IS A CONTROLLED DOCUMENT.		DWN D ERDMAN 19JUN2006	TE Connectivity			
DIMENSIONS:		CHK M GURRERI 19JUN2006				
TOLERANCES UNLESS OTHERWISE SPECIFIED:		APVD D BAECHELE 19JUN2006	NAME KIT, CONNECTOR, LightCrimp Plus LC SIMPLEX, MM, 1.6 - 2.0MM JACKET			
mm		PRODUCT SPEC	SIZE		CAGE CODE	DRAWING NO
0 PLC ±0.5		APPLICATION SPEC	A200779		C-1918627	
1 PLC ±0.13		WEIGHT	SCALE		SHEET	OF
2 PLC ±0.013		CUSTOMER DRAWING	4:1		1	1
3 PLC ±0.001					REV	D
4 PLC ±0.0001						
ANGLES ±						
FINISH						