

4

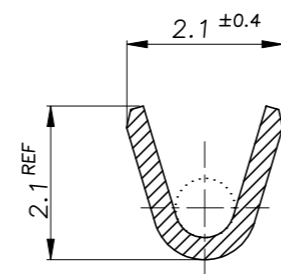
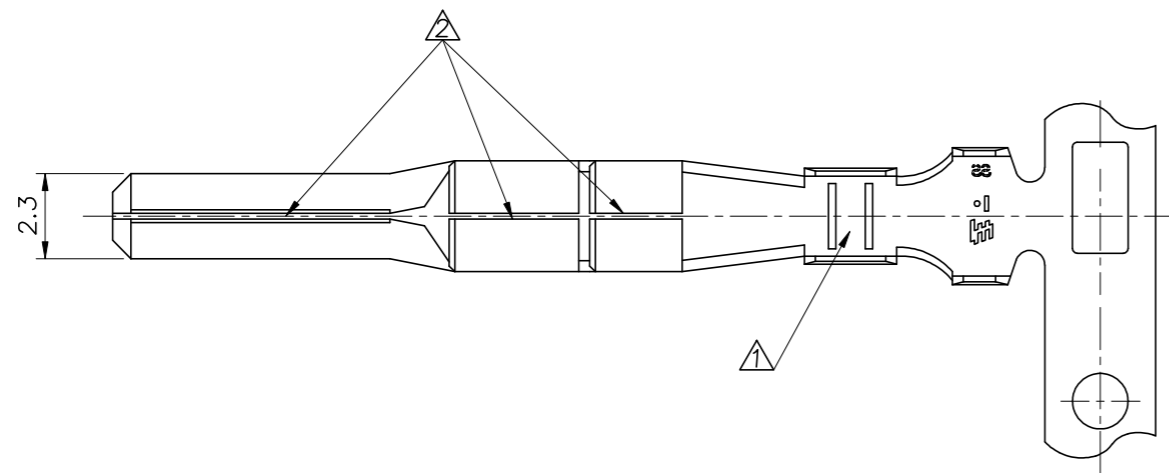
3

2

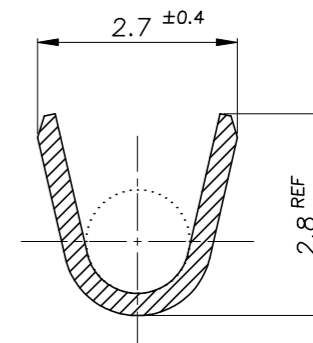
1

THIS DRAWING IS UNPUBLISHED. RELEASED FOR PUBLICATION
© COPYRIGHT BY TYCO ELECTRONICS CORPORATION. ALL RIGHTS RESERVED.

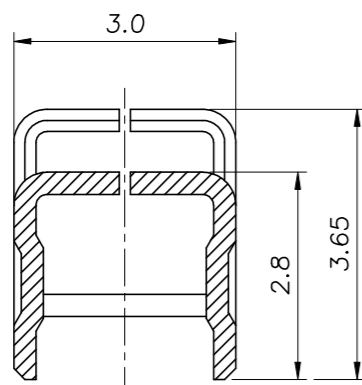
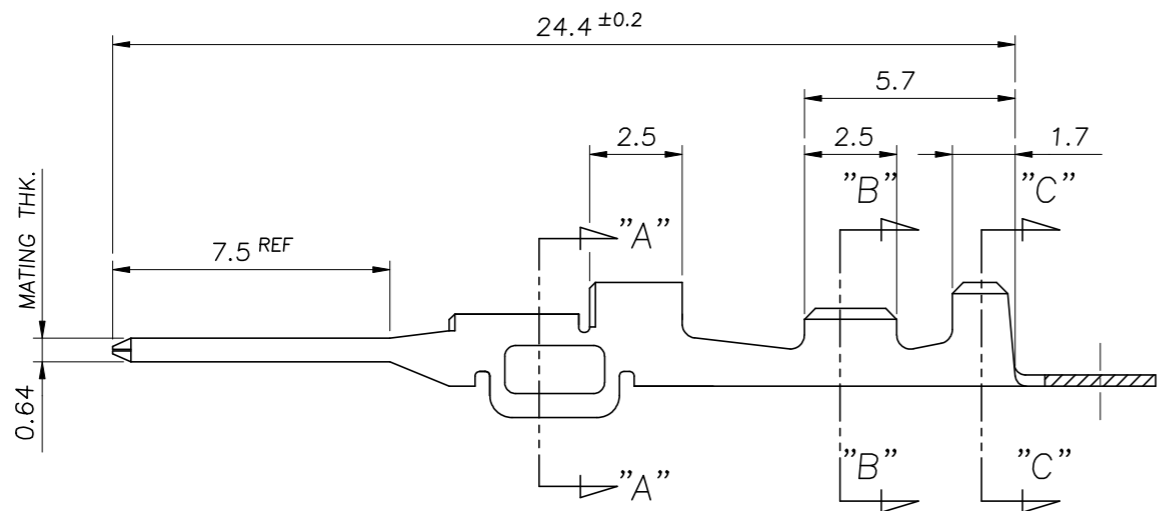
LOC	DIST	REVISIONS					
		P	LTR	DESCRIPTION	DATE	DWN	APVD
DS			B1	REVISED (ECR-23-170051)	22.MAR'23	JW	KT



SECTION "B-B"
SCALE=10/1



SECTION "C-C"
SCALE=10/1



SECTION "A-A"
SCALE=10/1

* NOTES

- △ TWO SERRATIONS CENTERED IN WIRE BARREL.
- △ 0.15 MAX GAP PERMISSIBLE.
- 3 WIRE SIZE EQUIV CHFUS 0.22 SQ

PRE-TINNED	BRASS STRIP 0.30THK.	1897752 -1
FINISH	MATERIAL	PART NUMBER

THIS DRAWING IS A CONTROLLED DOCUMENT FOR TYCO ELECTRONICS CORPORATION. IT IS SUBJECT TO CHANGE AND THE CONTROLLING ENGINEERING ORGANIZATION SHOULD BE CONTACTED FOR THE LATEST REVISION.		DWN SG OH	AMP KOREA. Kyungsan, Korea	
DIMENSIONS: mm		CHK YD LEE		
TOLERANCES UNLESS OTHERWISE SPECIFIED: 0 <XX<10 ± 0.2 10 ≤ XX <30 ± 0.25 ANGLES ± 3°		APVD HG CHO	NAME .090 II MLC TAB CONTACT (SS)	
3rd ANGLE PROJECTION		PRODUCT SPEC 108-61021	RESTRICTED TO	
MATERIAL		APPLICATION SPEC 114-61004	SIZE A3	CAGE CODE 00779
FINISH		WEIGHT	DRAWING NO 1897752	REV B1
		CUSTOMER DRAWING	SCALE 5/1	SHEET 1 OF 1