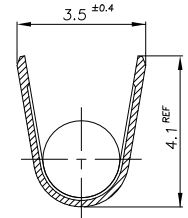
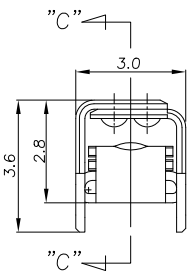
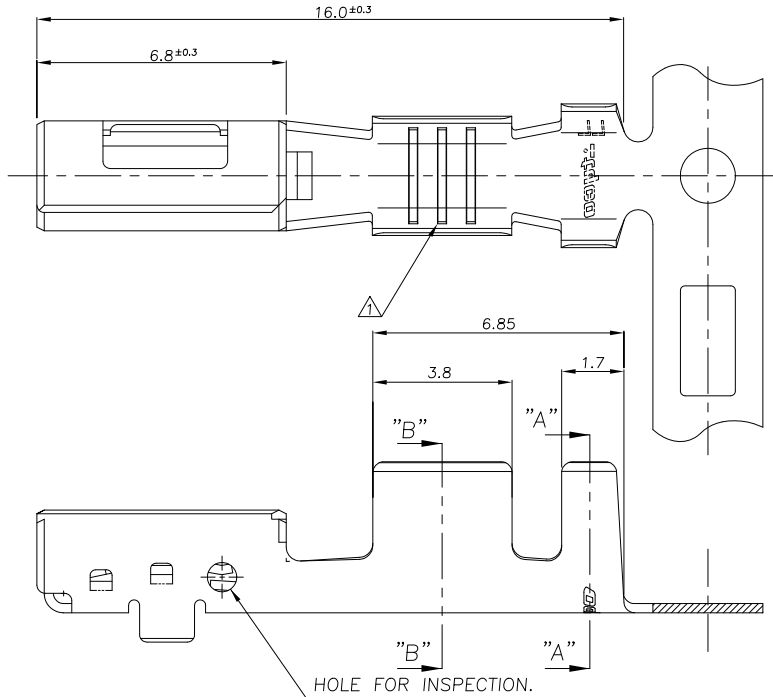
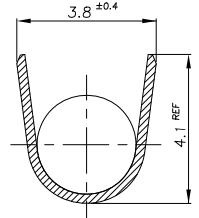


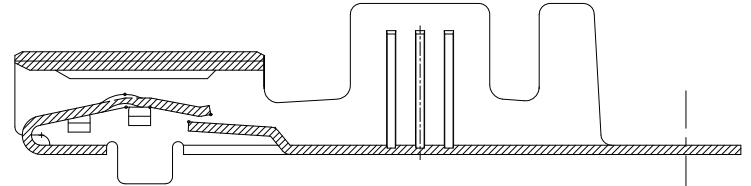
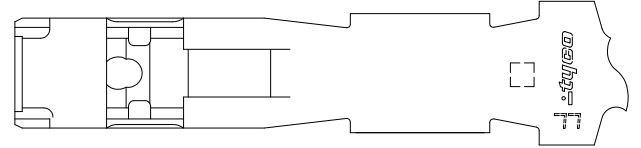
| REVISIONS | | | | | |
|-----------|-----|-------------|----------|-----|------|
| P | LTR | DESCRIPTION | DATE | DVN | APVD |
| A | | RELEASED | 13MAY'09 | SG | HG |



SECTION "B-B"



SECTION "A-A"



SECTION "C-C"

* NOTES


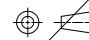
- 1 THREE SERRATIONS CENTERED IN WIRE BARREL
- 2 WIRE SIZE EQUIV AESSXF 2.5 sqmm.
- 3 APPLIED HSG P/N : SEE 2/2 SHEET

| | | | | | |
|----------------|--|---|--|---|--|
| PRE-TINNED | | CuNiSi Alloy 0.25THK | | 1897598-1 | |
| FINISH | | MATERIAL | | PART NUMBER | |
| DIMENSIONS: MM | | TOLERANCES UNLESS OTHERWISE SPECIFIED: | | DWN SG OH CHK YD LEE APVD HG CHO PRODUCT SPEC | |
| | | 0 <XX<10 ± 0.2 10<XX<30 ± 0.25 30<XX ± 0.3 ANGLES ± 3° | | NAME Tyco Electronics AMP KOREA, Kyungsan, Korea | |
| MATERIAL: - | | FINISH: - | | APPLICATION SPEC 114-61014 | |
| | | WEIGHT | | SIZE CAGE CODE DRAWING NO A2 00779 C= 1 8 9 7 5 9 8 | |
| | | CUSTOMER DRAWING | | RESTRICTED TO SCALE 10/1 SHEET 1 OF 2 REV A | |

THIS DRAWING IS UNPUBLISHED. RELEASED FOR PUBLICATION
 BY TYCO ELECTRONICS CORPORATION, ALL RIGHTS RESERVED.

| LOC | DIST | REVISIONS | | | | | |
|-----|------|-----------|-----|------------------|------|-----|------|
| DS | - | P | LTR | DESCRIPTION | DATE | DVN | APVD |
| | | | | SEE SHEET 1 OF 2 | | | |

| NO | DESCRIPTION | POS | P/N |
|----|---|-----|---------|
| 1 | 090 III 2P PLUG ASS'Y | 2P | 936224 |
| 2 | 090 III 4P PLUG ASS'Y | 4P | 936227 |
| 3 | 090 III 6P PLUG ASS'Y(1ROW) | 6P | 936230 |
| 4 | 090 III 6P PLUG ASS'Y(2ROW) | 6P | 936268 |
| 5 | 090 III 6P PLUG ASS'Y(FOG S/W) | 6P | 1743184 |
| 6 | 090 III 8P PLUG ASS'Y | 8P | 936233 |
| 7 | 090 III 10P PLUG ASS'Y | 10P | 936092 |
| 8 | 090 III 12P PLUG ASS'Y | 12P | 936196 |
| 9 | 090 III 14P PLUG ASS'Y | 14P | 936199 |
| 10 | 090 III 16P PLUG ASS'Y | 16P | 936201 |
| 11 | 090 III 18P PLUG ASS'Y | 18P | 936204 |
| 12 | 090 III 20P PLUG ASS'Y | 20P | 936095 |
| 13 | 090 III 22P PLUG ASS'Y | 22P | 936151 |
| 14 | 090 III 26P PLUG ASS'Y | 26P | 936098 |
| 15 | 090/SPT HYB 2P PLUG ASS'Y | 2P | 936568 |
| 16 | 090/SPT HYB 4P PLUG ASS'Y | 4P | 936444 |
| 17 | 090/SPT HYB 10P PLUG ASS'Y | 10P | 936363 |
| 18 | 090/SPT HYB 12P PLUG ASS'Y | 12P | 936372 |
| 19 | 090/SPT HYB 14P PLUG ASS'Y | 14P | 368451 |
| 20 | 090/SPT HYB 16P PLUG ASS'Y | 16P | 368454 |
| 21 | 090/SPT HYB 18P PLUG ASS'Y | 18P | 368497 |
| 22 | 090/SPT HYB 20P PLUG ASS'Y | 20P | 368457 |
| 23 | 090/SPT HYB 32P PLUG ASS'Y | 32P | 936321 |
| 24 | 090/SPT HYB 40P PLUG ASS'Y | 40P | 936352 |
| 25 | 090/SPT HYB 76P PLUG ASS'Y | 76P | 936195 |
| 26 | 040/090/JPT HYBRID CONNECTOR 39P PLUG ASS'Y | 39P | 936405 |
| 27 | 040/090/JPT HYBRID CONNECTOR PLUG 20P | 20P | 936517 |
| 28 | 090 25P PLUG FOR DOOR TO BODY | 25P | 936369 |
| 29 | 090 30P PLUG FOR DOOR TO BODY | 30P | 368488 |
| 30 | 090 33P PLUG FOR DOOR TO BODY | 33P | 936283 |
| 31 | 040/090 III HYBRID 14P PLUG | 14P | 1743247 |
| 32 | 090 III PLUG ASS'Y FOR 62P CONN | 62P | 1743346 |
| 33 | 090/250 HYB 40P PLUG HSG ASS'Y | 40P | 936063 |
| 34 | 090/250/MCP 9.5 HYBRID 82P PLUG ASS'Y | 82P | 1743033 |
| 35 | 090/250 HYBRID 92P PLUG ASS'Y | 92P | 1743037 |
| 36 | 090/250 HYBRID 56P PLUG ASS'Y | 56P | 1743029 |
| 37 | PLUG ASSEMBLY CONNECTOR FOR HYB 42P(.040/.090) | 42P | 1743098 |
| 38 | PLUG ASSEMBLY CONNECTOR FOR HYB 39P(.040/.090/.250) | 39P | 1743089 |
| 39 | 040/090 HYBRID 39P PLUG ASSY FOR LIF CONNECTOR(LHD) | 39P | 1743531 |
| 40 | 040/090/MCP HYB 42P PLUG FOR ASSY DOOR BODY | 42P | 1743680 |

| | | | | | |
|--|--|------------------|--|-------------|---------------|
| FINISH | | MATERIAL | | PART NUMBER | |
| <small>THIS DRAWING IS A CONTROLLED DOCUMENT FOR TYCO ELECTRONICS CORPORATION. IT IS SUBJECT TO CHANGE AND THE CONTROLLING ENGINEERING ORGANIZATION SHOULD BE CONTACTED FOR THE LATEST REVISION.</small> | | DVN |  AMP KOREA, Kyungsan, Korea | | |
| DIMENSIONS: MM | | CHK | NAME | | |
|  | | APVD | 090 III MLC RECEPTACLE(LL) | | |
| TOLERANCES UNLESS OTHERWISE SPECIFIED: 0 <XX<10 ± 0.2 10<XX<30 ± 0.25 30<XX ± 0.3 ANGLES ± 3° | | PRODUCT SPEC | SIZE CAGE CODE DRAWING NO | | |
| MATERIAL | | APPLICATION SPEC | A2 00779 C= 1 8 9 7 5 9 8 | | RESTRICTED TO |
| FINISH | | WEIGHT | SCALE 10/1 SHEET 2 OF 2 REV A | | |
| | | CUSTOMER DRAWING | | | |