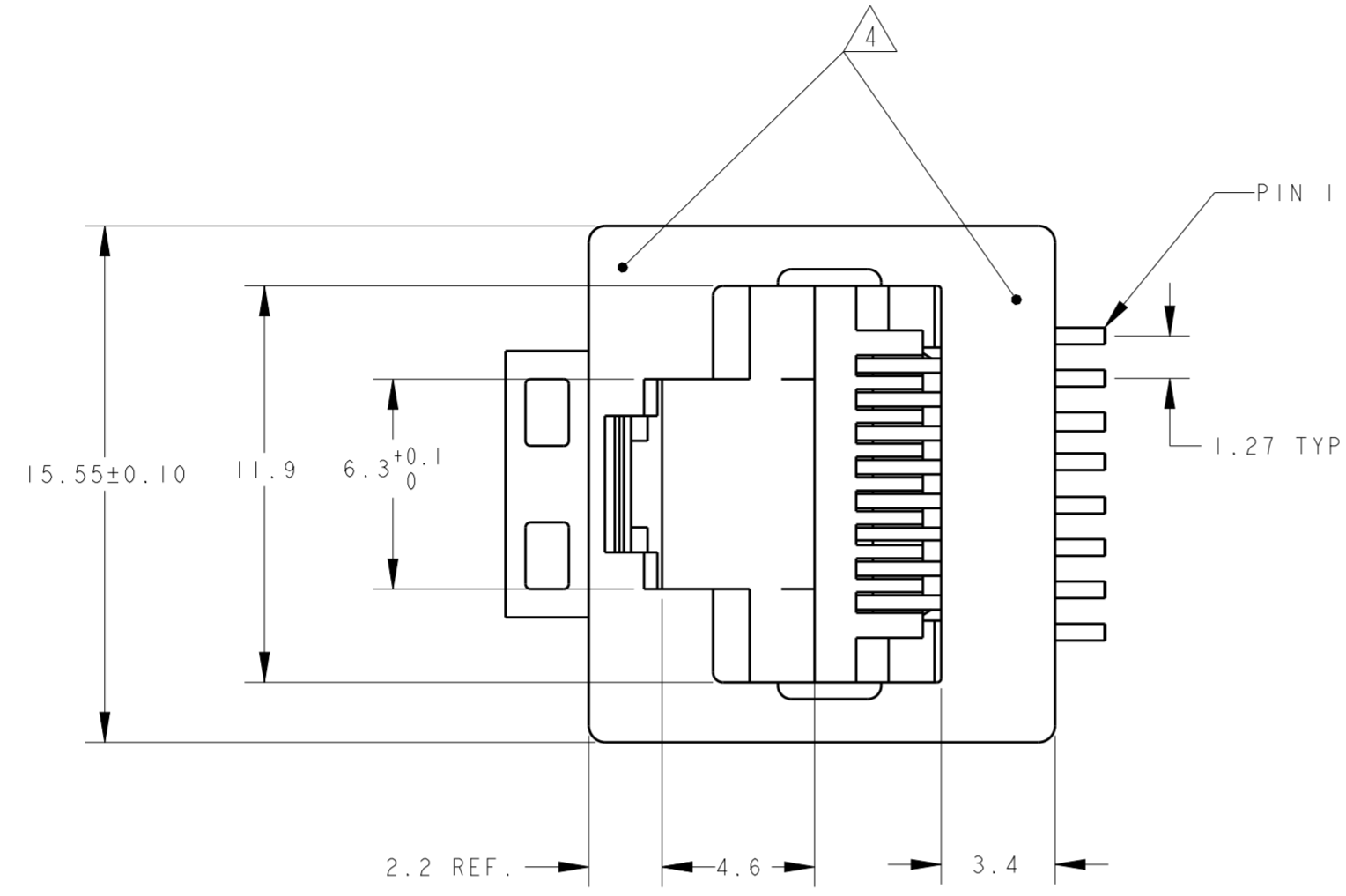
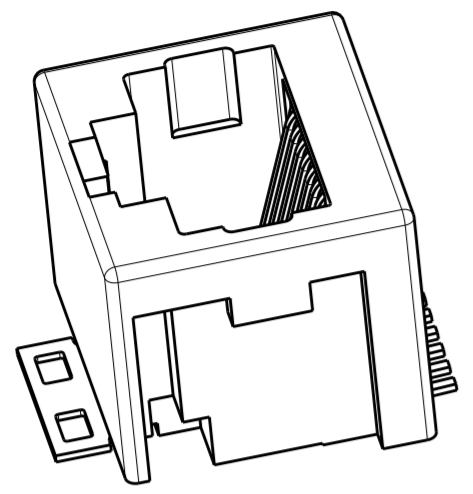


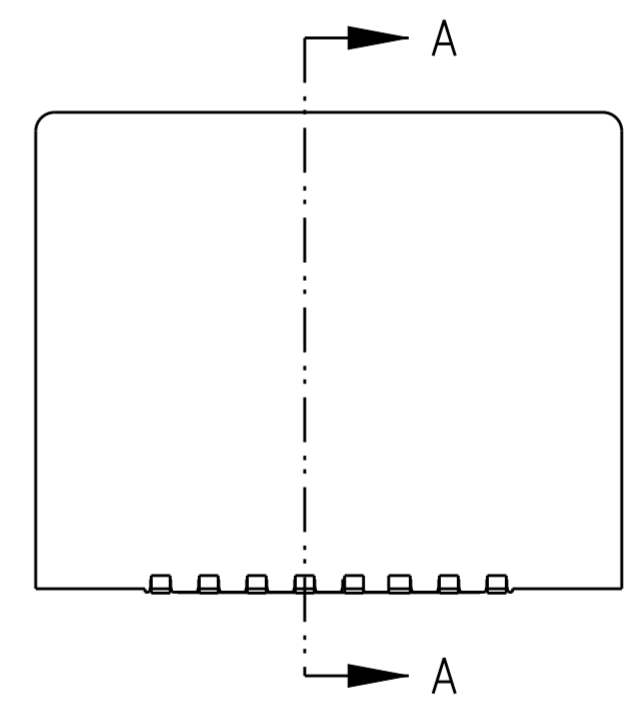
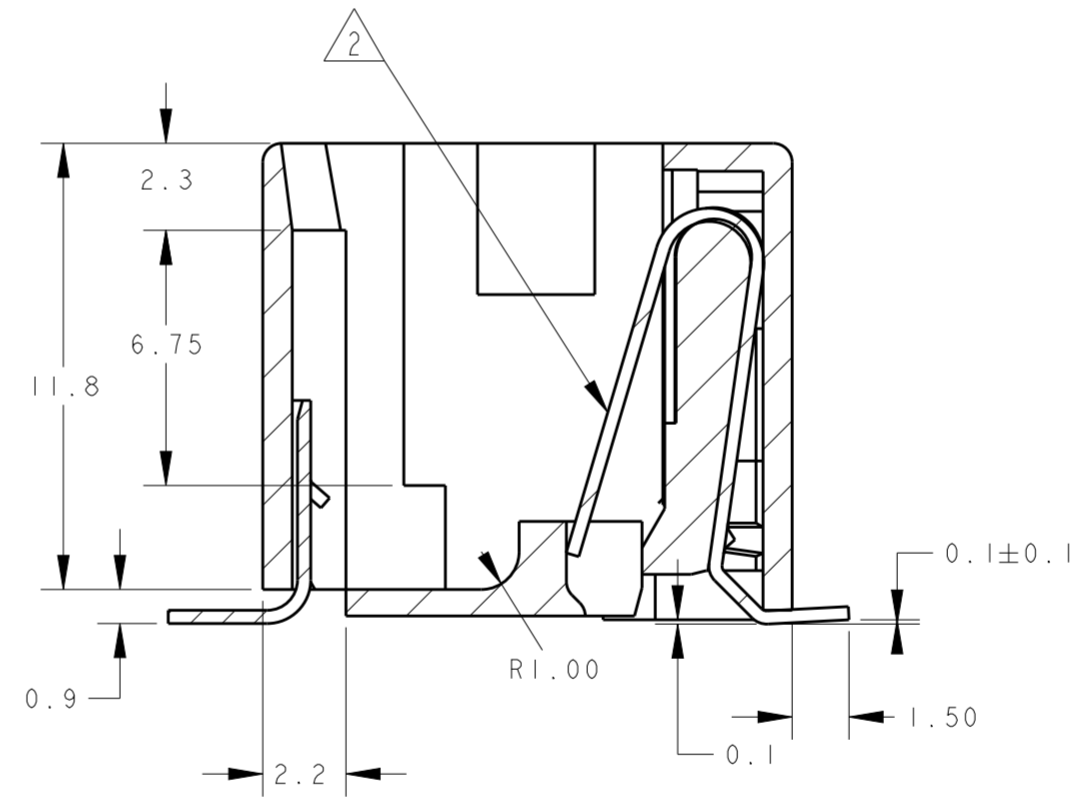
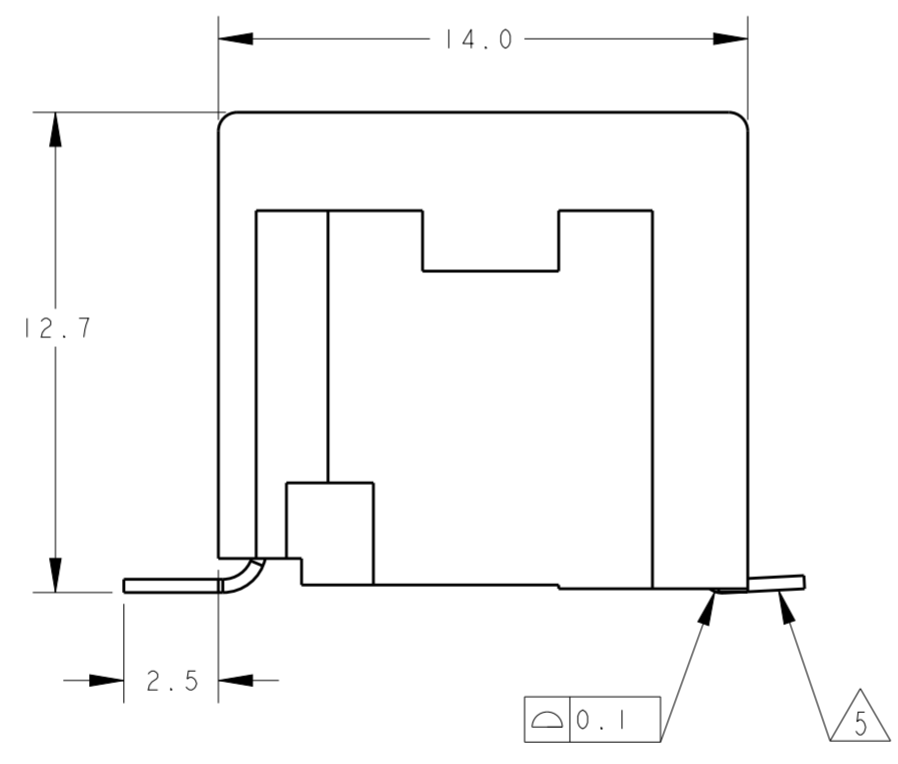
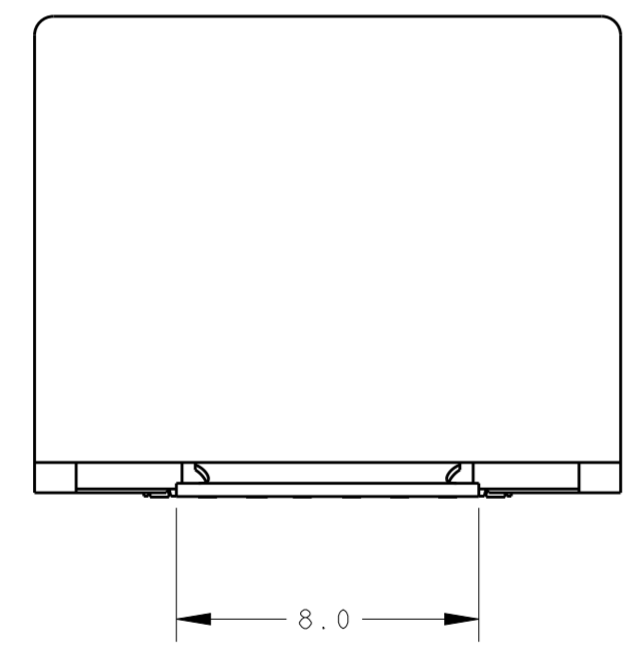
THIS DRAWING IS UNPUBLISHED. RELEASED FOR PUBLICATION
 © COPYRIGHT ALL RIGHTS RESERVED.

LOC		DIST		REVISIONS			
P	LTR	DESCRIPTION	DATE	DWN	APVD		
	D	HOUSING RIB STRENGTHENED AND RAWMATERIAL CHANGED TO PA4T	06JAN2012	PS	RRP		
	E	ECO-16-001320	13JUN2016	AD	SH		



NOTES:

- 1 TOLERANCES UNLESS OTHERWISE SPECIFIED: ±0.15.
- 2 CONTACT PLATING:
 OVERALL: Ni 1.27µm MIN. ALL OVER THE CONTACTS
 SOLDER ZONE: Sn 3.5-5.0µm ON THE SOLDER ZONE OF THE CONTACT
 MATING ZONE: PLATING CONFIRMS TO PRODUCT REQUIREMENTS AS PER SPECIFICATION 108-19117
- 3 MATERIAL:
 HOUSING: 30% G.F. LCP, COLOR BLACK, UL 94V-0.
 CONTACTS: PHOSPHOR BRONZE
 SOLDER BRACKET: TINPLATED BRASS WITH NICKEL UNDERLAYER.
- 4 SURFACE CAN BE USED FOR PICKING THE MODULAR JACK WITH, TYPE II SMD MACHINE.
- 5 MEASURED AT HEEL OF CONTACTS, COPLANARITY AT TIPS MAX. 0.18mm.
- 6 TAPE AND REEL PACKAGING ACCORDING TO EIA 481-3 SPECIFICATIONS.

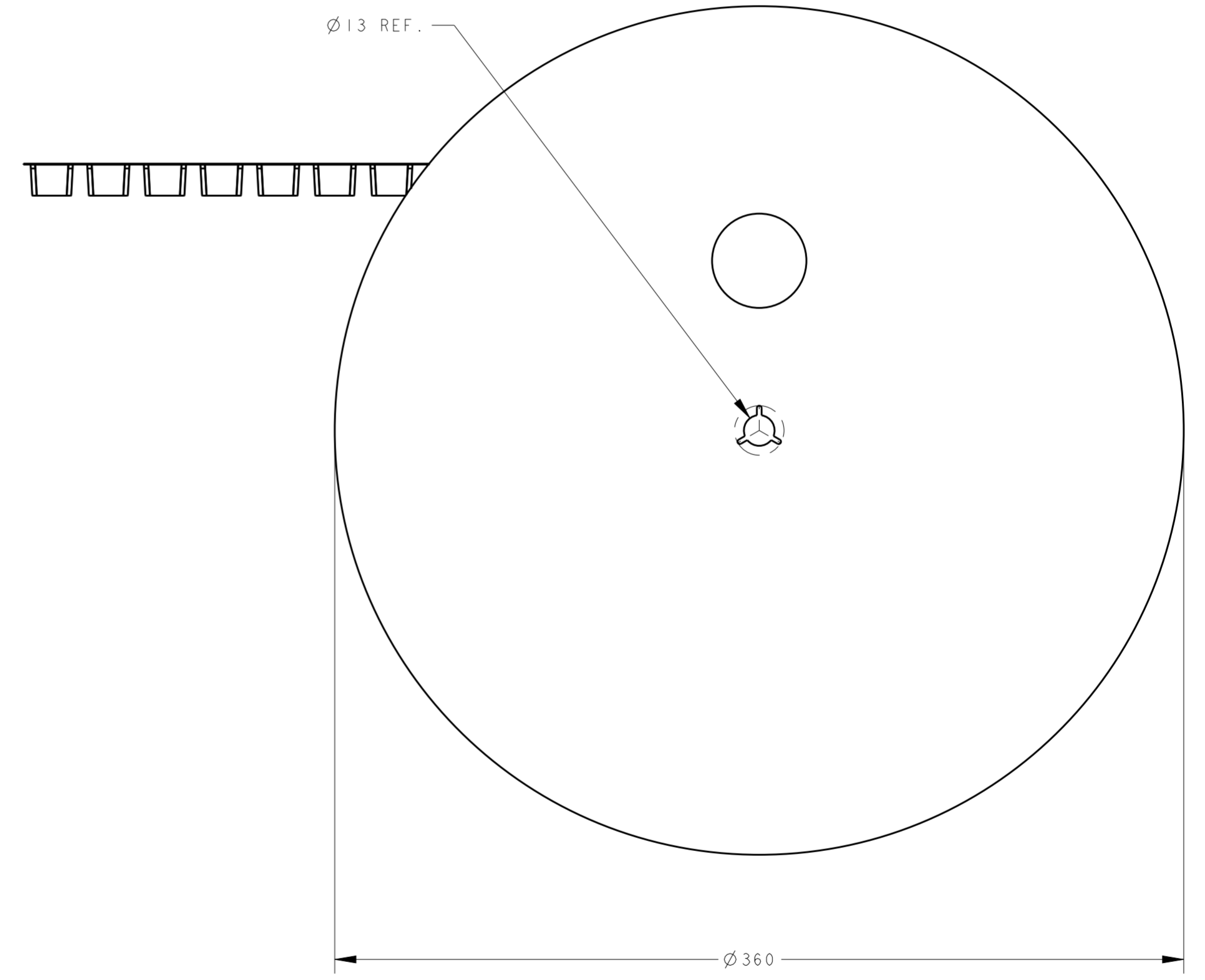
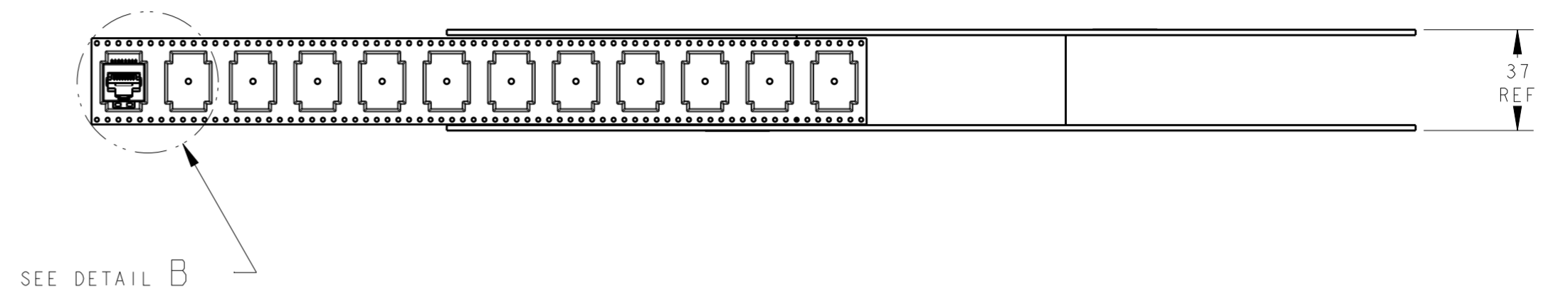
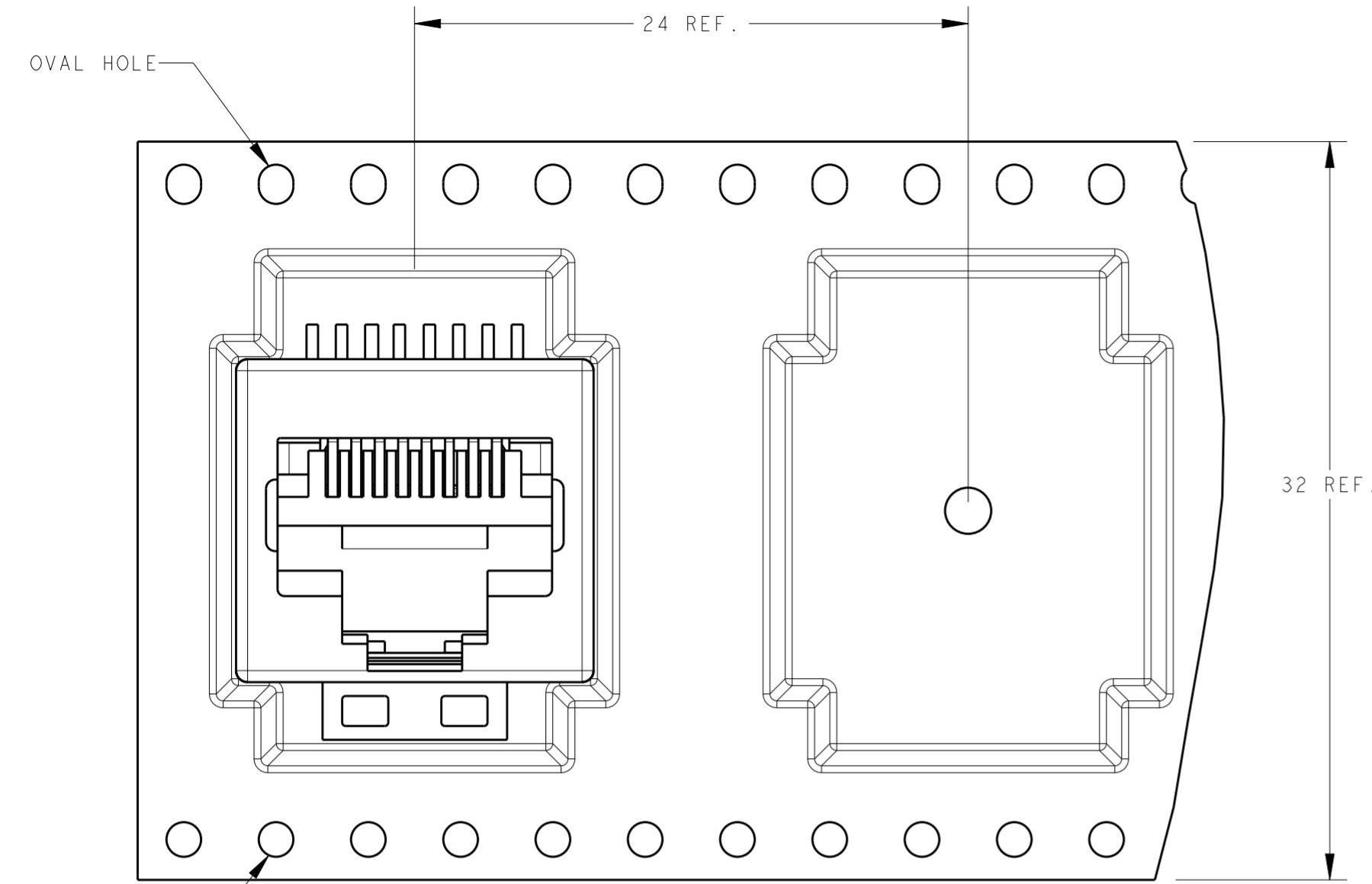


SECTION A-A

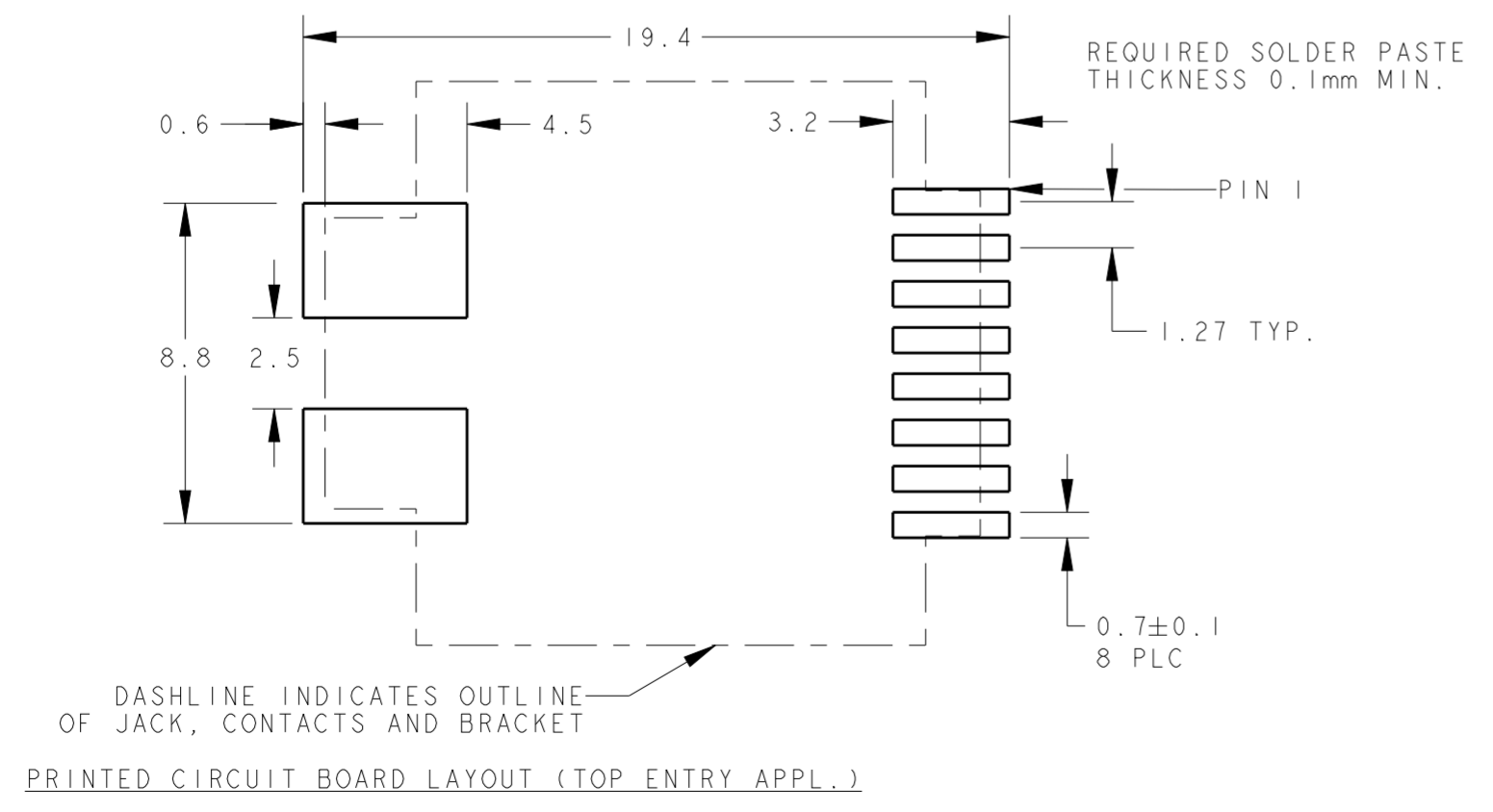
8 POSN./8 CONTACT		250 PCS ON Ø360mm OD REEL TOP ENTRY ORIENTATION PER DETAIL B		1857885-1	
REMARKS		PACKAGING		PART NUMBER	
THIS DRAWING IS A CONTROLLED DOCUMENT.		DWN Shrivathsa CHK Premjith APVD M. Oppers	14 JUL 06 14 JUL 06	TE Connectivity INVERTIBLE MODULAR JACK, 8 POSITION, SURFACE MOUNT APPLICATION	
DIMENSIONS: mm		TOLERANCES UNLESS OTHERWISE SPECIFIED: 0 PLC ± 1 PLC ± 2 PLC ± 3 PLC ± 4 PLC ± ANGLES ± FINISH			
MATERIAL SEE NOTE 3		SEE NOTE 2		SIZE A2	RESTRICTED TO -
CUSTOMER DRAWING		SCALE 5:1		SHEET 1 OF 2	REV E

THIS DRAWING IS UNPUBLISHED. RELEASED FOR PUBLICATION
 © COPYRIGHT ALL RIGHTS RESERVED.

LOC		DIST		REVISIONS			
P	LTR	DESCRIPTION	DATE	DWN	APVD		
-	-	SEE SHEET 1	-	-	-		



DETAIL B
 SCALE 4:1



THIS DRAWING IS A CONTROLLED DOCUMENT.		DWN Shrivathsa CHK Premjith APVD M. Oppers	14 JUL 06 14 JUL 06	TE Connectivity INVERTIBLE MODULAR JACK, 8 POSITION, SURFACE MOUNT APPLICATION	
DIMENSIONS: mm		TOLERANCES UNLESS OTHERWISE SPECIFIED: 0 PLC ± 1 PLC ± 2 PLC ± 3 PLC ± 4 PLC ± ANGLES ± FINISH -			
MATERIAL		APPLICATION SPEC		SIZE	RESTRICTED TO
		WEIGHT		A2	
		CUSTOMER DRAWING		SCALE 1:2	SHEET 2 OF 2
				DRAWING NO. C-1857885	REV E